

the Record

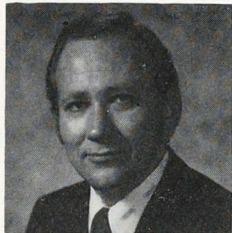
OF SIGMA ALPHA EPSILON ■ AUGUST 1977 ■ VOLUME 97 ■ NUMBER 3



**SIGMA ALPHA EPSILON IN THE
HALLS OF CONGRESS
TODAY AND YESTERYEAR**

Your Supreme Council and National Office Staff

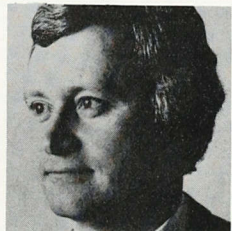
The new Supreme Council for the 1977-79 biennium was installed at the final banquet of the Philadelphia Convention. Active in fraternity affairs for many years, all six volunteer members serve without stipend. Much of their free time is spent conducting fraternity work and during each year they can be found visiting chapters, attending Founders' Day celebrations and Leadership School, and conducting the quarterly meetings of the Council. Thus, we introduce to you, your Supreme Council and National Office Staff.



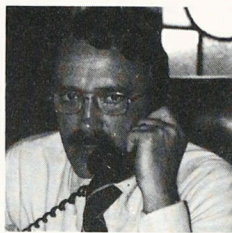
ESA Louis E. Smith, Drake '51, is registrar and Associate Dean at Simpson College in Indianola, Iowa. He received his doctorate in educational psychology and school administration from the University of Northern Colorado. At the 1971 Richmond Convention he was elected Eminent Supreme Herald, after serving as Archon of Province Tau. He presently serves as advisor to the Greek organizations at Simpson.



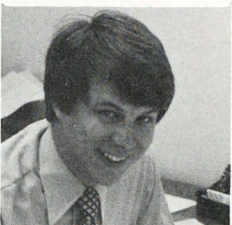
ESDA Richard F. Generelly, George Washington '47, served in several fraternity positions prior to his election to the Council. He was elected at the New Orleans Convention in 1973 and previously had served as Archon of Province Gamma. He was also president of the Washington, D.C. Alumni Association and currently serves as president of the Washington City Rho House Corporation. At the 1973 Convention he proposed the formation of a Permanent Committee on Chapter Housing and has been chairman since its inception. The new ESDA is a partner in the law firm of Shannon and Morley, practicing in Washington, D.C.



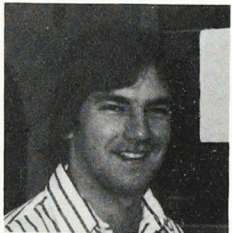
ESW James D. Peterson, Minnesota '57, is serving his second two-year term on the Council. Elected Eminent Supreme Chronicler at the 1975 Denver Convention, he served as an officer of Province Rho for 10 years. He also is chapter advisor and president of the house corporation at Minnesota Alpha. In addition he has held the position of president of the Twin Cities Alumni Association. For two years he was a member of the Leadership School Planning Committee and a faculty member for several years.



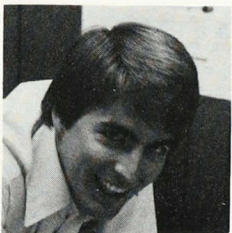
Jack R. Hotaling, Syracuse '53, is a twenty-year veteran of the National Office Staff. Elected ESR in 1969, he also serves as Secretary of The Levere Memorial Foundation, Secretary of the SAE Leadership Foundation and Assistant Secretary of the Board of Trustees. Responsible for all services of ΣAE, he also is involved in the Evanston Rotary Club, Skokie Valley Family Counseling Service, the Glenview United Fund, and the Glenview United Methodist Church.



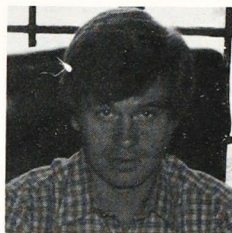
Geoffrey C. Woie, Minnesota '75, is beginning his second year as Director of Finance and Development. Besides assisting chapters with their finances and fund-raising efforts, he is responsible for all National Office finances and the annual giving program. This year he will begin researching and planning a deferred giving program for The Levere Memorial Foundation.



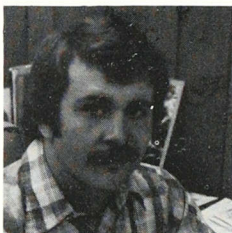
Michael E. Garrold, Allegheny '76, is also serving his second year as an Educational and Leadership Consultant. Region IV, which includes all states west of Colorado, has been his area of concern for the past year. Along with the Director of Extension, he has worked to revitalize Province Xi, Utah Phi, and Colorado Chi.



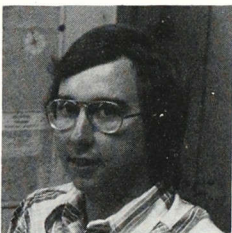
R. Clint Smith, Oklahoma '77, served his chapter as E.A. and E.D.A. before joining the staff as an Educational and Leadership Consultant. He was awarded the Leadership Action Award by the University and was the recipient of the David W. Sloan Award for the Outstanding ΣAE. In addition, Clint was a member of the interfraternity council and the interfaith council.



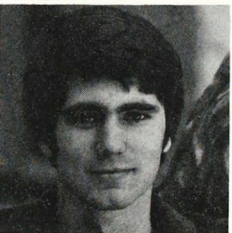
Kenneth D. Tracey, Eastern New Mexico '70, serves as Director of Chapter Services/Programming. He also has served as an Educational and Leadership Consultant for the East Coast and as the Director of Extension. He supervises the Library Program, National Service Project, career planning and fraternity awards. In addition, he works closely with the Educational and Leadership Consultants.



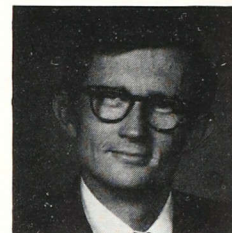
Ray J. Artigue, Arizona State '76, has been named the new Director of Extension. A recent graduate, Ray was a member of Blue Key honorary, Sigma Delta Chi, National Order of Omega and was selected for Who's Who in American Colleges and Universities. In addition, he served his chapter as EA and was both Collegiate Council Representative and Deputy Archon of Province Upsilon.



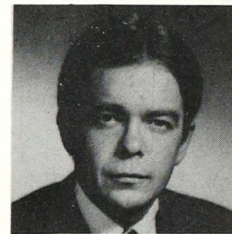
James P. Hamlin, Northern Arizona '75, will once again serve Region III as the Educational and Leadership Consultant. Responsible for all chapter and alumni activities in the region, Jim has spent considerable time canvassing alumni associations and revitalizing them. Prior to his work on the staff, he worked as an intern with the Arizona Probations Office.



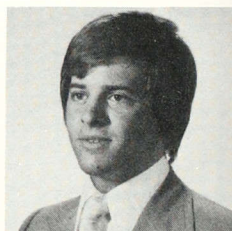
Clifford B. Tracy, Jr., Northwestern '77, is beginning his first year on the staff as an Educational and Leadership Consultant. He served his chapter as Eminent Treasurer and was also coordinator of the "big brother" program with the Kingsley Elementary School, a school for emotionally disturbed children. Having completed his B.A. in economics, he hopes, in the future, to pursue a graduate degree in business administration.



ESH John B. Warren, Emory '59, was elected at the 1977 Philadelphia Convention. He served as president of the Atlanta Alumni Association, is advisor to both Georgia Epsilon and Georgia Eta, and is president of the Georgia Epsilon House Corporation. He served 10 years as an officer of Province Epsilon and is a member of the Permanent Committee on Chapter Housing, the Development Committee and chairman of a special finance committee. He is a tax partner with Arthur Anderson & Co. in Atlanta.



ESCh Thomas R. Kessler, Kent State '61, is the other newly elected member of the Council. He has served both Province Pi and Nu-Epsilon as an officer and has been a member of Leadership School faculty for 16 years and Director for the past four years. In addition, he has attended many Founders' Day celebrations as the keynote speaker and also attends many regional leadership schools throughout the year. Presently, head of the European division of the New York Bank, he currently resides in New York City.



Collegiate Council Chairman Richard Kelley, Western Kentucky '77 is completing his one year term on the Council. As the undergraduate voice on the Council, he has been very active in the "Fight Against Dystrophy" (FAD) program sponsored by the college for the dergraduates of the fraternity. Previously, he served as vice chairman and secretary of the Collegiate Council. A recent graduate, he served his chapter as EA, EDA, Pledge Trainer and Rush Chairman.

From the Editor

There's no telling when our readers will receive this issue of *The Record*. We hope it will not be more delayed than was the May issue. The trouble is that our printer has been virtually shut down because of a strike, and as this current issue of our journal goes to press, the strike is still on. The George Banta Company of Menasha, Wis., is one of the nation's largest printing firms, and it has had an enviable record of doing first-class work. Sigma Alpha Epsilon has had a long association with Banta, going back to 1911 when Billy Levere first contracted with them to print *The Record*. The Bantas were all good $\Phi\Delta\Theta$ s and published a large number of fraternity journals. Few other printers could do fraternity journals properly.

In any case, we're hanging in there with Banta, and we hope our readers will be patient with the long delay in the appearance of this issue of *The Record* which had to be put together and printed by supervisory personnel at Menasha.

Our main feature in this issue spotlights the members of ΣAE in the Ninety-Fifth Congress, an impressive aggregation of Minerva's sons in the nation's capital. And we have never seen a complete list of all those ΣAE s who have been Congressmen in the past. Our researches turned up a lot of them. We hope the list is complete and accurate. If it is not, we suspect we'll hear about it soon enough from our eagle-eyed brothers.

Jack Rushing has provided us a review of spring sports, which indicates that undergraduate ΣAE s are as involved as ever in collegiate athletics.

We include another chapter in the fascinating memoirs of Harry Bunting. If our mail is any indication, the Bunting memoirs are as attractive a feature as we've had in *The Record* in some years.

Just a final word to our alumni brothers. Make a promise to yourself that you will sit down *this week* and write a recommendation on at least one prospective rushee for your old chapter or for any chapter. They can all use good men, and they depend on you for help. It'll cost only 13 cents and a few minutes of your time.

PUBLISHED CONTINUOUSLY SINCE 1880

Joseph W. Walt, Editor

Barbara D. Searle, Editorial Assistant

CIRCULATION 65,000

Second class postage paid at Evanston, Ill., and at additional mailing offices.

Send address changes to P.O. Box 1856, Evanston, Ill. 60204.

Published quarterly by Sigma Alpha Epsilon, 1856 Sheridan Road, Evanston, Ill.

Notice of Change of address (Form 3579) should be sent to Sigma Alpha Epsilon, P.O. Box 1856, Evanston, Ill. 60204.

Printed by the George Banta Company, Menasha, Wis. 54952.

theRecord

OF SIGMA ALPHA EPSILON

AUGUST 1977 ■ VOLUME 97 ■ NUMBER 3

Contents

Sigma Alpha Epsilon in the Halls of Congress — Today and Yesteryear. Two Senators and Eleven Congressmen in the Ninety-Fifth Congress of the United States.	58
Spring Sports Review	64
1977 Founders Day — As Big as Ever	72
How Solid is the Base?	79
When We Came Up From Dixieland: The ΣAE Memoirs of Harry Bunting, X	82
Convention Update	84

Departments

ΣAE -GRAM: Last-minute flash news about ΣAE , the Greek World, and the campuses of the nation	63
Chapter News	66
Alumni Notes	68
Mini-Directory	75
Chapter Eternal	77
Lost Alumni File	80



ΣΑΕ

IN CONGRESS

ΣΑΕ Represented in 95th Congress by Two Senators and Eleven Congressmen

Since 1856 an All-Time Total of 26 Sons of Minerva Have Served in the U.S. Senate and 98 in the House of Representatives in Washington.

SIGMA ALPHA EPSILON is well represented in the present 95th Congress in Washington. Two senators and eleven members of the House of Representatives give ΣΑΕ one of the larger delegations among Greek-letter fraternities. In the Senate are two brothers, both serving their first term in that august body.

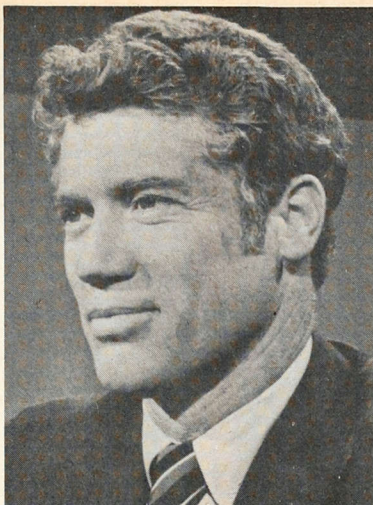
TWO FIRST-TERM SENATORS

Wendell R. Anderson, Minnesota '56, Senator from Minnesota, was appointed on December 30, 1976, to complete the term of Vice-President Walter Mondale. He was governor of Minnesota at the time of his appointment to the U.S. Senate. Elected governor in 1970 at the age of 37, he was the youngest governor in the nation. Re-elected in 1974 by a record margin of 420,000 votes, he led the resurgence of the Democratic-Farmer-Labor party in Minnesota state government. A former Olympic hockey player, Anderson believes strongly that physical fitness is vitally important to his performance as an elected official. He jogs regularly and, at 43, still plays hockey frequently during the winter. An active ΣΑΕ, he has been a guest speaker at the Leadership School and recently flew to Minneapolis to join the festivities celebrating the 75th anniversary of the founding of Minnesota Alpha.

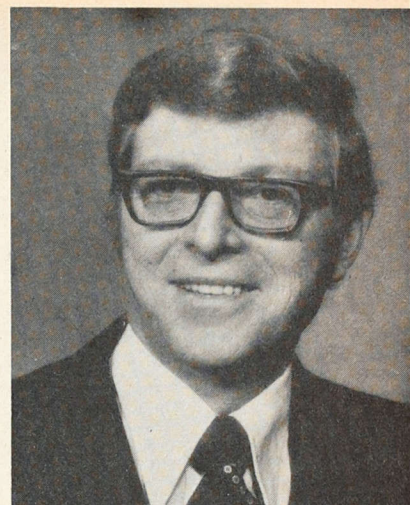
Pete V. Domenici, New Mexico '55, Senator from New Mexico, was elected to the Senate in 1972 at the age of 40. He was formerly chairman of the Albuquerque city council. A Republican, Domenici has served as assistant minority whip in the Senate since 1975. He is a member of the Senate budget committee, the environment and public works committee, the energy and natural resources committee, and he is ranking minority member of the Senate special committee on aging.

ELEVEN CONGRESSMEN

Bill Archer, Texas '50, Representative from Texas, 7th district, was elected to the House as a Republican in 1970 and is now serving in his fourth Congressional



Wendell R. Anderson, Minnesota '56
Senator, Minnesota



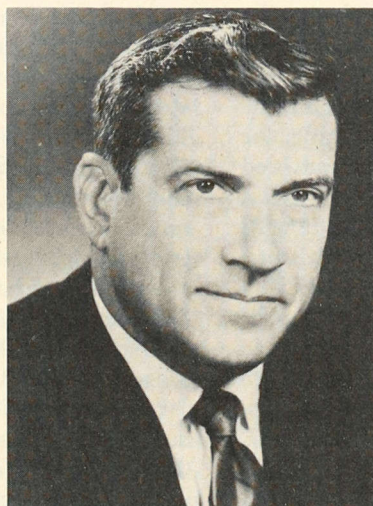
Pete V. Domenici, New Mexico '55
Senator, New Mexico



Bill Archer, Texas '50
Texas, 7th District



Max Baucus, Stanford '64
Montana, 1st District



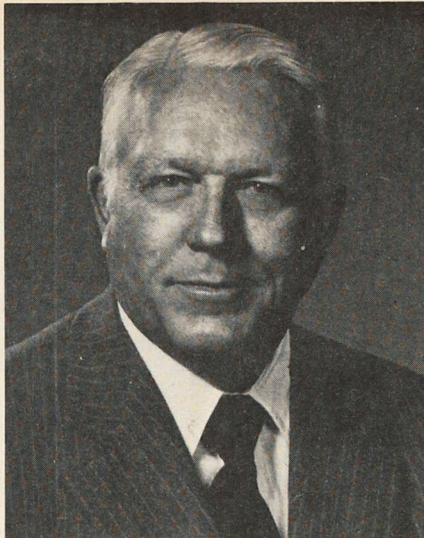
Bill Dickinson, Alabama '50
Alabama, 2nd District



Daniel J. Flood, Dickinson '29
Pennsylvania, 11th District



Walter Flowers, Alabama '55
Alabama, 7th District



John J. Flynt, Jr., Georgia '36
Georgia, 6th District



James P. Johnson, Northwestern '52
Colorado, 4th District



Ralph S. Regula, Mt. Union '48
Ohio, 16th District

term. After graduation from the University of Texas, where he was a varsity tennis player and outstanding intramural athlete, he served in the Air Force during the Korean War. In 1953 he entered business; then fifteen years later, he entered the practice of law in Houston, where he resided until his election to Congress. He is a recipient of the Houston ΣAE "Man of the Year" award.

Max Baucus, Stanford '64, Representative from Montana, 1st district, is at 35 one of two ΣAE "youngsters" in the House. After earning a law degree at Stanford in 1967, the handsome Baucus headed straight for Washington

where he gained good experience with the CAB and the SEC and learned a lot about Washington ways. In 1971 he returned to his native Montana and entered law practice in Missoula. He was elected to Congress as a Democrat in 1974 and is now serving his second term.

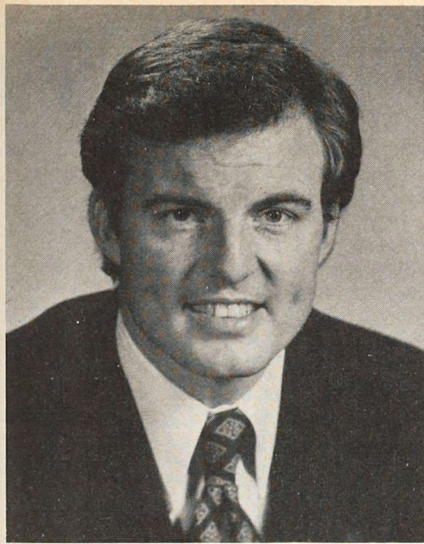
Bill Dickinson, Alabama '50, Representative from Alabama, 2nd district, is one of the new South's successful new Republicans, elected originally in 1964 and now serving his seventh term in the House. He is a self-proclaimed conservative, insisting on fiscal responsibility and speaking out against the perfidies of the communists. The Americans for Constitutional Action has awarded him its distinguished service award every year since he entered Congress.

Daniel J. Flood, Dickinson '29, Representative from Pennsylvania, 11th district, is the quintessential Congressman. From Wilkes-Barre, this remarkable veteran Democrat, now 73, has represented his district for fifteen sessions in Congress, a record for any member of ΣAE in the House, his tenure exceeded only by Richard Russell's 38 years in the Senate. Everyone agrees that he is the most colorful member of Congress. His flare for the dramatic (he was once a professional actor) and eloquence have won him a reputation as being the most irrepressible, if not the very

best, orator in the House. He is so popular with his constituents that in 1970 he was nominated by both parties for re-election. Years ago he grew a handle-bar mustache for a part in a play. The sartorial addition was never removed, and his mustache, now waxed to perfection, has become a sort of trademark over the years. A powerful member of the House, he is the leading advocate of continuing U.S. sovereignty over the Panama Canal, a militant position that saw him declared in 1959 to be "Public Enemy Number One" by the Panamanian government. Quite apart from his flamboyance in dress and speech, he has served his district—and his nation—remarkably well.

Walter Flowers, Alabama '55, Representative from Alabama, 7th district. It is somehow appropriate that the Congressman from Tuscaloosa should be a ΣAE. Walter Flowers, 44, is a long-time resident of Tuscaloosa, a ΦBK graduate of the University of Alabama law school. A former Rotary Foundation Fellow in England and army officer, Democrat Flowers was elected to Congress in 1968 and has been re-elected for each term since then with widening margins. In Congress, says Flowers, "my arch conservative friends think I am too liberal. My liberal friends think I'm too conservative."

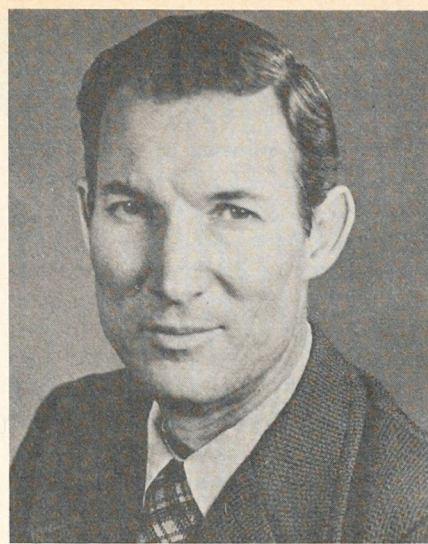
John J. Flynt, Jr., Georgia '36, Representative from Georgia, 6th



Jim Guy Tucker, Harvard '64
Arkansas, 2nd District



Lionel Van Deerlin, Southern California '37
California, 42nd District



Richard C. White, Texas-El Paso '46
Texas, 16th District

district. A native of Griffin, Ga., Flynt, now 62, is serving in his 13th term as a Congressman for his district. After law school and a stint as assistant U.S. district attorney, he served in the army during the Second World War and earned a Bronze Star. A Democrat, he was elected to Congress in 1954 and has been re-elected ever since that time. An important figure in Congress, Flynt is a member of the powerful Appropriations committee.

James P. Johnson, Northwestern '52, Representative from Colorado, 4th district. Johnson, a Republican, was first elected to Congress in 1972 and has served there ever since that time. After his graduation from Northwestern in 1952, he served as a jet pilot in the Marines for four years. He then studied law at the University of Colorado, where he earned his LL.B. in 1959. He settled down in Fort Collins as an attorney and later municipal judge. In the House his chief assignments are agriculture and interior and insular affairs.

Ralph S. Regula, Mt. Union '48, Representative from Ohio, 16th district, was elected as a Republican to the 93rd Congress in 1972 and was re-elected in 1974 and 1976. After graduation from law school in 1952, he entered practice at Navarre, Ohio. After four years as a member of the Ohio State

Board of Education, he served in the Ohio House of Representatives (1965-66) and Ohio Senate (1967-72) prior to his election to Congress.

Jim Guy Tucker, Harvard '64, Representative from Arkansas, 2nd district. Tucker is the other good-looking youngster at the Capital, where he is a freshman Congressman. He is 34. In 1976 he ran in a 6-man free-for-all race for the Democratic nomination and got more votes than the other five together. He won easily in the general election to take Wilbur Mills' old seat. Prior to his election to Congress Tucker was Attorney General of Arkansas for two terms. Earlier, after his graduation from Harvard in 1964, he went to Viet Nam as a civilian war correspondent, and he has written a book on the Vietnam War. He earned his law degree at the University of Arkansas in 1968.

Lionel Van Deerlin, Southern California '37, Representative from California, 42nd district, was re-elected in 1976 to an eighth House term by a 3-to-1 margin. Van Deerlin, an old *Daily Trojan* editor at U.S.C. and a print and broadcast journalist in San Diego before his first election to Congress in 1962, brings much expertise to his position as head of a House Communications subcommittee, concerned with all the media. Around Congress Van Deerlin is known as a

strong liberal (he refers to himself as "progressive"), and is immensely popular with his constituents back in the southwest corner of California.

Richard C. White, Texas-El Paso '46, Representative from Texas, 16th district (comprising the ten westernmost counties of Texas including El Paso), has represented his district continuously since his first election in 1964. Initiated into ΣΑΕ at Texas-El Paso, he went on to study at the University of Texas, where he received his BA (1946) and law degree (1949). During World War II he served in the U.S. Marines as a Japanese interpreter and was a rifleman in the bloody conquests of Bougainville, Guam, and Iwo Jima. In the House, White is a prominent member of the Armed Services committee, Post Office and Civil Service committee, and of other significant subcommittees.

THE ELECTION of thirteen ΣΑΕs to the 95th Congress followed a long and honored tradition. Members of the fraternity have served in every Congress since William P. Price of the old Georgia Delta chapter at North Georgia was elected to the 41st Congress in 1870. In the '70s and '80s there were only a few ΣΑΕs in Congress, never more than five in any one session. Later their numbers grew.

The 65th Congress (1917-19) counted three ΣΑΕs in the Senate and eight in the House. During the 1920s the average number of ΣΑΕs in Congress was between nine and ten. Then the great Roosevelt landslide of 1933 brought an all-time record 21 ΣΑΕs to Congress—seven in the Senate and fourteen in the House. Since that time the average total ΣΑΕ Congressional delegation has been just over 15. Since 1933 the number of ΣΑΕs in the House has remained fairly constant, while the average senatorial delegation has declined from seven to two.

Through all these years 26 ΣΑΕs have served in the Senate and 98 in the House. It is doubtful that ΣΑΕ can begin to match the incredible record of ΔΚΕ or the concentration of representation of ΦΔΘ which had five congressmen from Georgia alone in 1909-11. But the record of Minerva's sons is an enviable one indeed.

In our researches a few interesting items emerged. Of ΣΑΕ's 26 senators, 21 have been Democrats and only 5 Republicans. In the House 67 have been Democrats, 29 Republicans, and two—William A. Harris, George Washington 1859, from Kansas (1893-95), and the redoubtable Thomas E. Watson, Mercer 1876, from Georgia (1891-93)—were Populists. Watson ran for vice-president on the Populist ticket with William Jennings Bryan in 1896. For many years, of course, ΣΑΕ's great strength was in the South, where Republicans were hard to find.

What is most remarkable is the number of ΣΑΕ Congressmen from ΣΑΕ's earliest days. Of a total of only about 350 men initiated by the fifteen tiny ante-bellum chapters between 1856 and 1861, ten of them subsequently were elected to Congress. The fraternity's first pledge, Newton Nash Clements, Alabama 1858, was a Representative from Alabama in 1880-81. The great John G. Carlisle, Kentucky Military 1858, was elected to the House in 1876, was Speaker of the House from 1883 to 1890, and served in the Senate (1890-93) before joining Cleveland's cabinet as

Secretary of the Treasury. William A. Harris, George Washington 1859, served in the House from Kansas in 1893-95 and—now a Democrat—was elected to the Senate in 1896. Gen'l. George W. Gordon, Nashville 1859, was a Tennessee representative in the House from 1907 to 1911. Other ante-bellum initiates who served in the House included William Lyne Wilson, George Washington 1860, for West Virginia (1883-95); Dr. John William Lawson, Virginia 1861, for Virginia (1891-93); Gen'l. George P. Harrison, Georgia Military 1861, for Alabama (1894-7); Patrick Henry, Nashville 1862, for Mississippi (1897-1901); Joseph C. Hutcheson, Virginia 1861, for Texas (1893-7); and Thomas H. B. Browne, Virginia 1867, for Virginia (1887-91).

Regionally, 72 out of a total of 124 ΣΑΕ senators and Congressmen have come from the South. Only 9 have come from the Northeast, while 23 have come from the Middle West and 20 from the West.

Three chapters of ΣΑΕ share honors for producing the most Congressmen: Alabama, Georgia, and the old Cumberland chapter at Lebanon, Tenn. Each saw five alumni members elected to the House.

Altogether ΣΑΕs have been elected to the Senate from 17 states, to the House from 35 states. Georgia and Kentucky have elected three ΣΑΕ senators each, five other states two each, and ten others one each. Alabama, Georgia and Tennessee have each elected nine ΣΑΕ Representatives. The nearest to that figure is California with five.

The following list is as complete as we can make it for the 41st through the 94th Congress:

SENATE

- Nathan L. Bachman, *Southwestern* '95; D., Tennessee (1933-7).
 John H. Bankhead, *Alabama* '91; D., Alabama (1931-46).
 John C. W. Beckham, *Centre* '88, D., Kentucky (1915-21).
 William E. Brock III, *Washington & Lee* '53; R., Tennessee (1971-77).
 John G. Carlisle, *Kentucky Military* 1858; D., Kentucky (1890-93).
 Dennis Chavez, *New Mexico* '20; D., New Mexico (1935-62).

- Zales N. Ecton, *Montana State* '20; R., Montana (1947-53).
 David H. Gambrell, *Davidson* '49; D., Georgia (1971-73).
 William A. Harris, *George Washington* 1860; D., Kansas (1897-1903).
 Byron P. "Pat" Harrison, *L.S.U.* '02; D., Mississippi (1919-41).
 John N. Heiskell, *Tennessee* '93; D., Arkansas (1913).
 Richard C. Hunter, *Nebraska* '09; D., Nebraska (1934-35).
 William M. Kavanaugh, *Kentucky Military* '85; D., Arkansas (1913).
 Philander C. Knox, *Mt. Union* 1872; R., Pennsylvania (1904-09; 1917-21).
 L. Q. C. Lamar, *Mississippi* 1866; D., Mississippi (1877-85).
 Alva M. Lumpkin, *South Carolina* '08; D., South Carolina (1941).
 George W. Malone, *Nevada* '17; R., Nevada (1947-59).
 Key Pittman, *Southwestern* '88; D., Nevada (1913-40).
 Alfred E. Reames, *Washington & Lee* '93; D., Oregon (1938).
 Richard B. Russell, *Georgia* '18; D., Georgia (1933-71).
 George A. Smathers, *Florida* '36; D., Florida (1951-69).
 Augustus O. Stanley, *South Kentucky* '88; D., Kentucky (1919-25).
 Millard E. Tydings, *Maryland* '10; D., Maryland (1927-51).
 Thomas E. Watson, *Mercer* 1876; D., Georgia (1921-22).

REPRESENTATIVES

- Fred G. Aandahl, *North Dakota* '21; R., North Dakota At Large, 82 Congress (1951-53).
 Sherman Adams, *Dartmouth* '20; R., New Hampshire 2nd District, 79 (1945-47).
 William W. Arnold, *Illinois* '01, D., Illinois 2nd, 68-74 (1923-35).
 Walter W. Bankhead, *Alabama* '18; D., Alabama 7th, 77 (1941).
 George W. Blanchard, *Wisconsin* '06; R., Wisconsin 1st, 73 (1933-35).
 Charles H. Brand, *Georgia* '81; D., Georgia 10th, 65-73 (1917-33).
 William E. "Bill" Brock, *Washington & Lee* '53; R., Tennessee 3rd, 88-91 (1963-71).
 Joseph E. Brown, *Cumberland* '03; R., Tennessee 3rd, 67 (1921-23).
 Thomas H. B. Browne, *Virginia* 1867; R., Virginia 1st, 50-51 (1887-91).
 Hamer H. Budge, *Stanford* '32; R., Idaho 2nd, 82-86 (1951-61).
 Robert R. Butler, *Cumberland* '03; R., Oregon 2nd, 70-72 (1928-33).
 John G. Carlisle, *Kentucky Military* 1858; D., Kentucky 6th, 45-51 (1877-90).
 Walter C. Chandler, *Tennessee* '09; D., Tennessee 9th, 73-74 (1935-40).
 Dennis Chavez, *New Mexico* '20; D., New Mexico At Large, 72-73 (1931-35).
 James R. Claiborne, *Missouri* '06; D., Missouri 2nd, 73-74 (1933-37).
 Newton Nash Clements, *Alabama* 1858; D., Alabama 6th, 46 (1880-81).
 George H. Combs, Jr., *Missouri* '21; D., Missouri 5th, 70 (1927-29).
 Robert L. Condon, *California at Berkeley* '34; D., California 16th, 83 (1953-55).

Continued on page 81

ΣAE-GRAM

1856 Sheridan Rd.
Evanston, Ill. 60204

Watch for blockbuster movie, "Fraternity Row," scheduled to be released soon by Paramount. The story is based on a true experience, the tragic death of a pledge in about 1954 who choked on a piece of raw liver and died. The film was written and produced by grad students in cinematography at U.S.C., with aid of donated labor by cameramen and a few professional actors. Film's budget was less than \$100. Filming was on campus, much of it at Calif. Gamma SAE house at U.S.C. The film's producer, Gary Allison, was a member of the chapter of the fraternity where the real-life tragedy occurred.

Professional actors in "Fraternity Row" include Peter Fox, Gregory Harrison, Scott Newman (son of actor Paul), Nancy Morgan, Wendy Phillips and Robert Emhardt. Promotional posters hype the sensational: "They didn't smoke grass. They didn't take the pill. They didn't do their own thing They went to college in the fifties. They pledged fraternities. They celebrated hell week They were the buttoned-down, bottled up generation. And sometimes they exploded."

Film will probably have double impact—bad and good. Bad will be almost certain very negative effect on fall rush this year. Long-term effect will probably be good as some of our recalcitrant chapters, those that persist in adolescent and highly dangerous hazing and hell week activities will be forced by weight of public (and private?) opinion to cut it out once and for all.

Watch further for more fraternity films, capitalizing on success of "Fraternity Row." Already in the mill are at least two, one called "The Pledgemasters" and another called "Animal House." They promise to be less restrained than "Fraternity Row" and could prove to be damaging to fraternities in eyes of the public.

Chapter deaths: C.W. Post College chapter bit the dust after a short and not-very-distinguished career. Does SAE not know how to run a chapter in the New York metro area? Post chapter joins Columbia and Adelphi in SAE's urban graveyard. None left in N.Y. area. Out West the Utah chapter has suspended operations. Attempt will be made to revive this fall. It makes about as much sense to run a non-Mormon chapter on this much-Mormon campus as it would to exclude Catholics at Creighton.

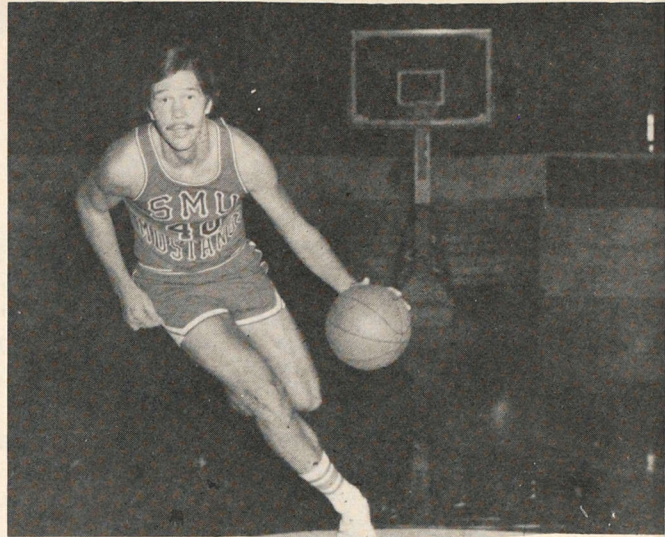
Annual giving to SAE continues very strong. Chapter initiations are slow, and it looks like total number of year's initiates will be down.

Directory rip-off: A number of chapters have been bilked by commercial outfits aggressively pushing alumni directory programs. Results are often shoddy directories, much profit to companies and little to chapters.

Minnesota Alpha celebrated its 75th anniversary in style Big court case in Cincinnati determines that private social groups have the right to expel members. Challenge by two Delta Zetas expelled by their Cincinnati chapter failed.



Bob Black



Joe Swedlund

Spring Sports Selections

After the completion of another year of sports activity, the ΣAE All-American selection committee met to discuss their choices for soccer, wrestling, tennis and basketball. Those selected as All-American have shown excellence in their respective sports, several of whom have captured regional awards.

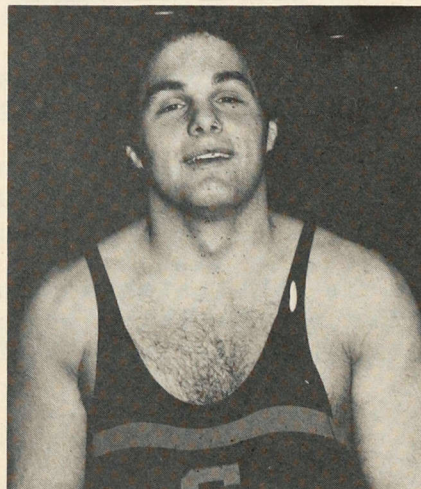
Wrestling—Five men have been chosen as ΣAE wrestling All-Americans. Ranging from freshman to senior and from 126 lbs. to 190 lbs., the men have exhibited expertise in their weight classes. An example is Clark Braun, Evansville '77. Assisting in Evansville's close race for the Indiana Collegiate Conference crown, Braun defeated his rival from Indiana Central in the championship round, but it wasn't enough. Indiana Central captured the crown by 1¼ points.

The other All-Americans include: Jim Means, Kentucky '79; Kent Swinehart, Franklin '78; Mark Evenhus, Oregon State '78; and George Maier, Gettysburg '79. *Tennis*—Two doubles teams and eight singles players are All-Americans. They include: Chap Brown, Florida '78; Scott Smith, Kentucky '77; Jeff Schmahl, Nebraska '78; Andy White, Davidson '79; Kenneth Scott Voelker, Washington &

Lee '77; Tony Chiricosta, Illinois '79, John Gillespie, Tennessee '79; and Jack Bushman, Auburn '78. All the above have participated in singles competition. The doubles teams are from Willamette and Case Western Reserve respectively. They are Dan McClung '77 and Kirk Mosher '77; and Steve Story '79 and Chuck Story '77.

Soccer—A full team of All-Americans has been garnered by the selection committee. They include two goalies, four fullbacks, three halfbacks and four forwards. Two of the members of the team have captured outstanding honors during the last year. Bob Black, New Hampshire '76, was an NCAA Division I All-American, All New England and All Yankee Conference player and was co-captain of the New Hampshire team during his junior year. In addition, Rich Badmington, New Hampshire '77, was on the first team of the All Yankee conference and was co-captain of the New Hampshire team during his senior year. These men lead the team which includes: Jeff Hoch, Ohio Wesleyan '77; Mike Lee, Mt. Union '77; Bob Ashenburg, St. Lawrence '77; David Nelson, Allegheny '79; Dave Easton, Miami

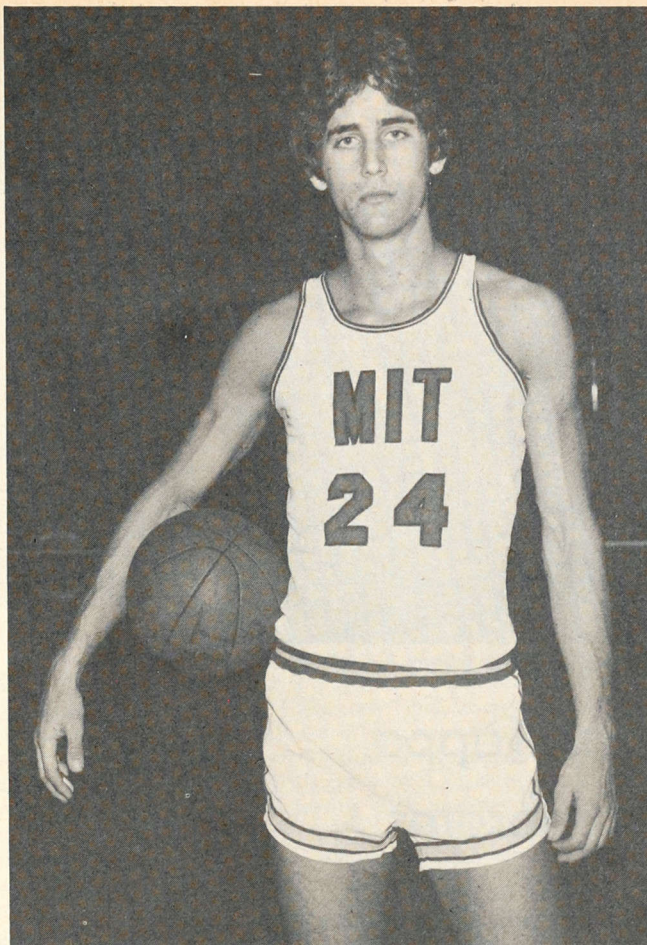
George Maier



'77; Doug Hunter, Washington & Lee '77; Mark Herlyn, St. Lawrence '79; Dan Boettcher, Willamette '79; Marty Rolnick, Bowling Green '78; Dale Miller, Allegheny '77; and Kevin Bove, Bowling Green '78.

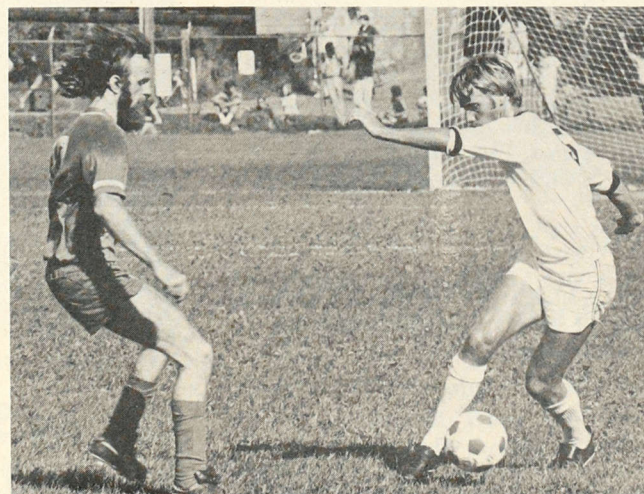
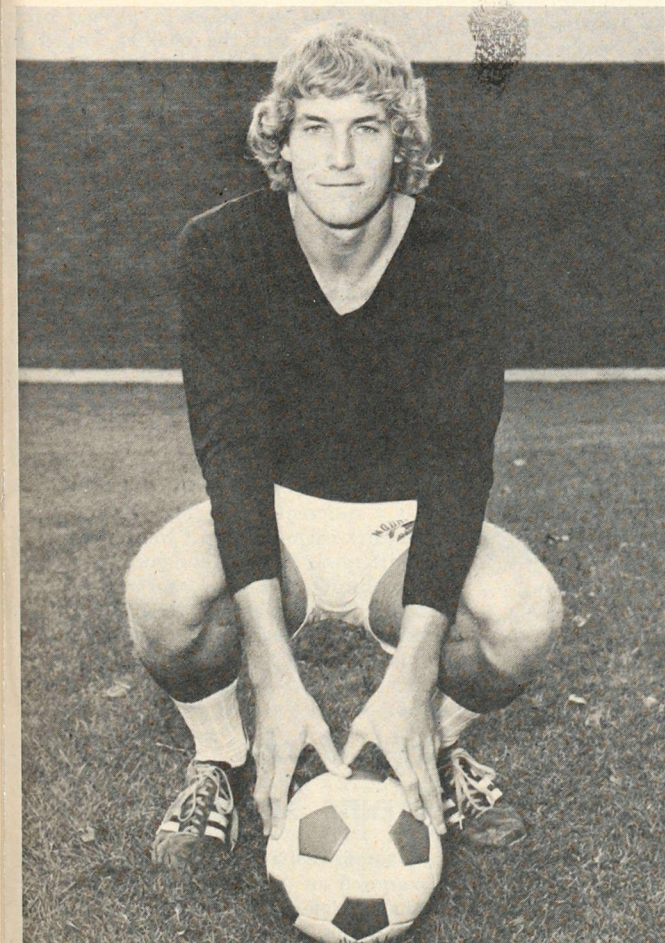
Basketball—Ten men have been chosen as members of the ΣΑΕ All-American basketball team. One member of the team, Mike Gminski, Duke '80, has had an outstanding freshman year. Named as the Atlantic Coast Conference Rookie of the Year, Gminski leads the fine group of All-Americans. Included on the team are Joe Swedlund, SMU '78; Bob Smythe, Florida '77; Bill Carey, Harvard '76; Kevin Wood, Randolph-Macon '78; Curtis Williams, Adrian '79; Joey Allen, Randolph-Macon '77, Rick Van Etten, MIT '78; Scott Goetsch, Duke '79 and David Austin, Westminster '77.

The selections made were compiled by the selection committee which consists of: Donn R. Bernstein, Clemson '58, ABC Collegiate Sports, New York City; Richard Harp, Kansas '40, Fellowship of Christian Athletes, Kansas City; Bruce King, Oregon '58, Sports Director for KOMO-TV, Seattle; Chuck Peterson, North Dakota '68, Sports Director of WDAZ-TV, Grand Forks, North Dakota; Ross Porter, Oklahoma '60, Los Angeles Dodger Announcer, Los Angeles; Jack Rushing, New Mexico '65, New York City; and Ed Storin, Miami '51, Executive Sports Editor, Miami Herald, Miami.



Rick Van Etten

Mike Lee



Rich Badmington

chapter news



Podva presents award

Cal Kappa Celebrates

California Kappa at California-Davis celebrated their 25th anniversary on February 26. The day began with a marathon volleyball contest and after four hours, the alumni had depleted all their substitutes, insuring a victory for the actives.

Later a cocktail hour and dinner was hosted at the faculty club. The Order of the Phoenix was presented to Wes Reiff '56 and Ray Spore '60 for their efforts on the house corporation. In addition, chapter advisor Monty Podva '70 presented the Brother Heroes Award to the Spring pledge class of 1968 for their "per capita contribution towards increasing fraternity communication through the publication of 'Cal Kappa Today'". Of the 16 pledge class members, 11 donated a total of \$186.99.

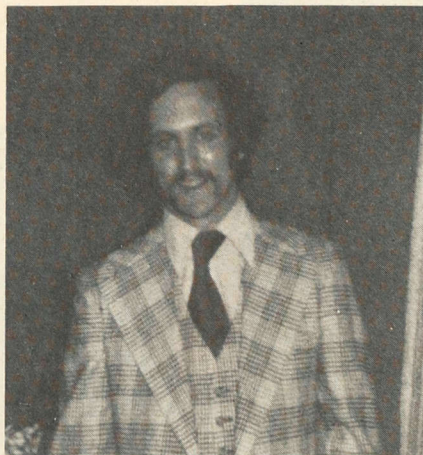
The evening was ended with the singing of "Violets" and the reading of the city of Davis mayor's proclamation of Sigma Alpha Epsilon Day in recognition of the 25 years of service to the community.

Florida Beta at Florida State recently initiated 17 new members and 23 Little Sisters into the realm of ΣΑΕ. Plans are being made by the University for a fraternity house to be built in the next four to five years. With this in mind, the chapter is in the process of setting up their building fund so they will be in good financial shape to move when the time comes.

Winter Rush was recently completed and proved moderately successful for Florida Sigma at West Florida. They netted six excellent pledges. Plans are being made for chapter house improvements and expansion for the annual summer house party.

Scott McVay, Wyoming '77 (Alpha) is the top sprinter at the University. On February 19 at an indoor meet, he captured the 50 and 300 yard dashes while placing second in the 600. Earlier in the season, McVay finished third in the 300 at the Air Force Invitational.

Dave Anthony, Hampden-Sydney '77, EA of his chapter, has been selected as a Division III All-American golfer the past two years. In 1975, he helped lead his team to the N.C.A.A.'s where they finished second. In 1976, the team ranked in the top eight nationally. He stands a good chance of being selected as an All-American for the third straight year and is considering competing on the Pro-Am tour.



Leading vote getter

Elected Student President

Ray Redlingshafer, Creighton '78, was elected Student Board of Governors president on March 9 defeating his nearest opponent by 100 votes. There was a turnout of 1,670 students, the largest turnout for a presidential election.

Indiana Epsilon at the University of Evansville pledged 22 men this year, 19 of whom were pledged during fall rush. This was the second largest pledge class on campus.

In addition they captured first place in the Spirit Week contest for both basketball and football and this marks the third and fourth straight first place trophies for the chapter.

Also, Dennis Haire '77, Eminent Deputy Archon of the chapter, was runner-up for Homecoming King. The chapter pushed hard for his election, coming five votes short of victory.

Bicycling to Cincinnati

A 140 mile bicycle trip was executed by the men of Kentucky Delta at Eastern Kentucky University. Over the Easter weekend, twelve chapter members, ten in a van and two on bicycles, rode to Cincinnati to attend a Cincinnati Reds game and also to raise money for muscular dystrophy.

The two cyclists rode for five miles and then changed places with two men riding in the van. They left Richmond, Kentucky at 5 a.m. and met the Cincinnati Reds at 6 p.m. Other members of the chapter met the group at the game.

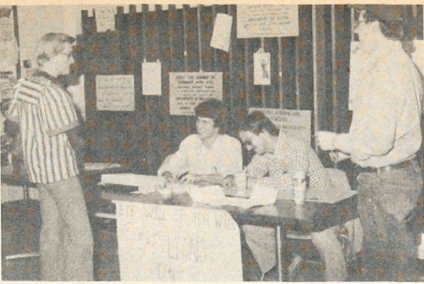
Over \$300 was raised in pledges prior to the ride and the chapter hoped to raise several thousand dollars for the charity.

Florida Alpha at the University of Miami was the overall champions of the 1976 homecoming. They placed first in house decoration, decorated car, 100% donors in blood drive, spirit all-campus, and spirit all-fraternity. In addition, a little sister, Janet Wallerich, was crowned Miss University of Miami. Their only second place finish was in the float competition.

They were runners-up in the intramural football competition and they also placed second in basketball. However, swimming was a different story. They won the all-campus championship and earned 10 points towards the President's Intramural Cup. In addition, they captured the softball title by beating P.E.K., a physical education fraternity, by a score of 12 to 7.

Eye Bank Gains Support

Georgia Sigma at Valdosta State recently sponsored an "Eye Will If You Will" eye bank on campus in conjunction with the local Lions Club. More than 150 people



Charity drive

willed their corneas to the Georgia Eye Bank during the project.

The chapter, once again, claimed the highest grade point average on campus for fraternities. They have won this award every quarter since their installation in 1973.

Mark Bailey '80 was elected Greek God during the recent Valdosta State Greek Week by the campus sororities. And Mark Retterbush '76, Mike Tomlinson '77 and Bill Wright '79 are all serving as SGA senators.

Finally, early in March, members of Iowa Chi at the University of Northern Iowa stopped in Valdosta on their way to spring vacations. This was planned during the Leadership School last August and appears to be developing into an annual event.

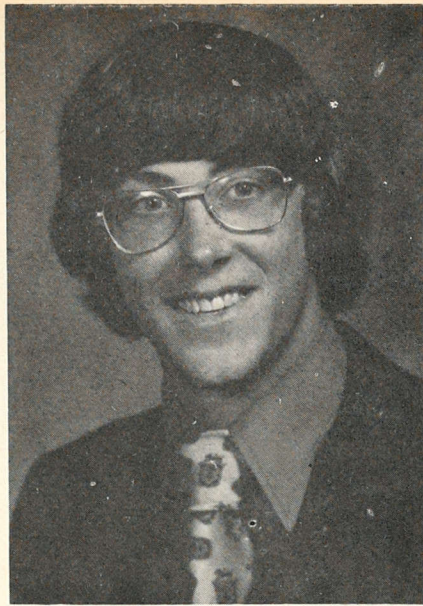
The chapter at **Davidson College** is becoming both politically and community service minded.

The new president of the Student Government Association is Thomas Young '78. He served as a student senator prior to his election. In addition, David Barnard '79 became Junior Class president. He won the post by garnering the most votes in a student senate race for his class.

The chapter as a whole has been active this spring. They held a bike-a-thon which raised approximately \$1,000 and they also are sponsoring a project at a local nursing home. They visit the home each Monday and talk with the various residents. The project has been successful for both the students and the home's residents.

Maryland Beta at the **University of Maryland** began spring with a weekend at the Wintergreen Resort in Virginia. Later, they participated in their annual spring philanthropy, the Easter party for Orphan Children. The event was co-sponsored by Delta Delta Delta.

In addition to philanthropy and weekends, the chapter has done well in intramurals. They took second place in the wrestling tournament and Mark Davids '76 took the title in the heavyweight division.



Drees receives award

Besser-Lindsey Winner

Jerry Drees, **South Dakota State '79**, has been named a recipient of the Besser-Lindsey Award for 1977.

Drees, a three-year letterman in track, has also maintained better than a 3.0 grade point average on a 4.0 scale and also served his chapter as Warden and Little Sister Coordinator.

He has been named captain of the South Dakota State track team, running the 120 high hurdles and the 440 intermediate hurdles.

Lucy Pattie Again Honored

The story of Lucy Pattie is well-known in the fraternity, but **Kentucky Epsilon** at the **University of Kentucky** has added another chapter.

The chapter decided the gravestone of Lucy Pattie was not appropriate for the significant role she played in Σ AE history. Thus, they decided to replace the stone with the approval of Ms. Pattie's family. After receiving approval, the chapter had a new stone designed and placed at her gravesite. The old headstone was presented to the National Fraternity at Kentucky Epsilon's 1977 Founders' Day celebration and ESDA Louis Smith accepted on behalf of the fraternity. During the summer months the stone will be transported to Evanston for permanent display in the Temple museum.

All funds for the project were obtained from the treasury of Kentucky Epsilon and from alumni contributions.

Ohio Lambda at **Kent State** saw a slight down-turn in both their size and academic standing during the winter quarter, but by spring quarter, things were looking up again.

The chapter had their house sided and they pledged ten new men. In addition, their successful spring formal was held at Punderson State Park on May 21.

Intramurals were not a strong point of the chapter this year, with the exception of track. The team placed first in five of twelve events and the pledges assisted in the decisive win over the other fraternities.

Additional work will be completed on the chapter house during the summer and the chapter is looking forward to another great year.

For the first time since 1972, **South Dakota Theta** at **South Dakota State** captured the All-Sports Trophy, defeating Alpha Gamma Rho, champions for the last four years.

Winning first place in fast pitch softball, flag football, volleyball, coed softball, the big bike race, and 3 on 3 BB, assured them of a first place finish. They also earned second in basketball and coed volleyball, and fourth place in water polo.

Defeating their nearest competition by 3,000 points, the chapter also had individual competitors who earned 260 of the 6,560 points captured by the chapter.

Captures All-Sports award

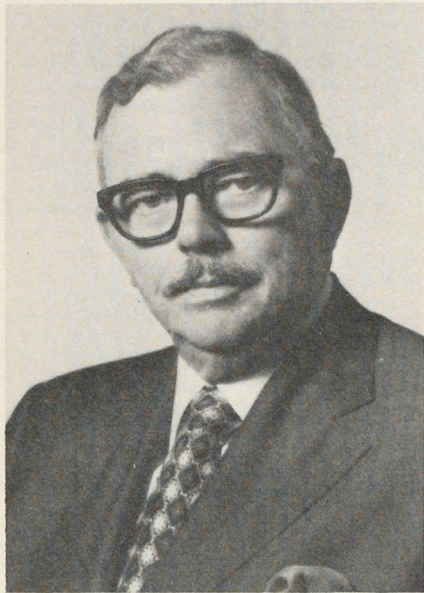


A new directory policy has been established. A full directory will be printed three times a year and is available upon request from the National Office.

Requests for directories should be addressed to:

**Directory Service
Sigma Alpha Epsilon
P.O. Box 1856
Evanston, IL 60204**

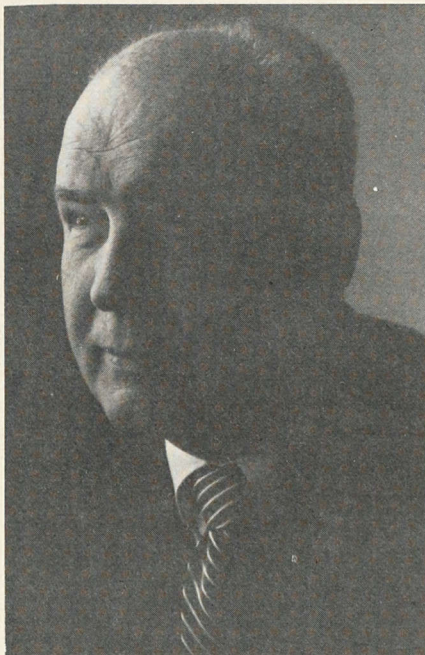
alumni notes



Founder Member 313

M. P. MacDougall

M. P. MacDougall, **Southwestern '34** of Hilton Head, South Carolina, became Founder Member 314 on December 10, 1976. During the 1930 dedication of the Levere Memorial Temple, MacDougall served as a model initiate.



Model initiate becomes Founder

Four More Founders

Cicero C. Sessions

Cicero C. Sessions, **Tulane '32**, has become Founder Member 313 of The Levere Memorial Foundation. He is the senior member of the law firm of Sessions, Fishman, Rosenson, Snellings & Boisfontaine in New Orleans and is still actively engaged in the full time practice of law.

Sessions' professional specialty is civil trials and appeals. He is admitted to practice in all courts of the State of Louisiana, the United States District Courts for the Eastern, Middle and Western Districts of Louisiana; the United States Courts of Appeals for the Fifth and Second Circuits; the United States Court of Military Appeals and the United States Supreme Court.

He is a member of the American Society of International Law, the Judge Advocates Association, the Federation of Insurance Counsel, the Maritime Law Association and the New Orleans and Louisiana Association of Defense Counsel. In addition he is a Fellow of the American College of Trial Lawyers and the International Society of Barristers.

MacDougall served as senior vice president of Hoerner Waldorf Corporation (now Champion International). Now retired, he has served as an elder of the Presbyterian Church for 30 years and a member of Rotary for 17 years. MacDougall won the Citation of Achievement from William Jewell College in 1952 and is listed in *Who's Who in American Industry*.

Frederick D. Leeds

Frederick D. Leeds, **Purdue '12** became Founder Member 315 posthumously on December 14, 1976. Mr. Leeds died March 21, 1975 in Macon, Georgia, his home since 1938.

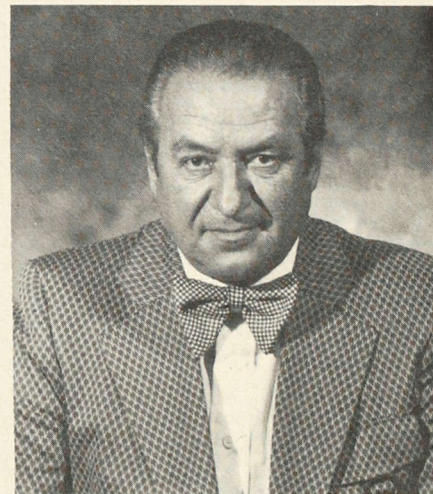
Mr. Leeds held various retailing positions with J. L. Hudson, Sears Roebuck & Co., National Cloak & Suit Co., and Montgomery Ward before assuming the vice presidency and merchandise manager position with Loveman's, Inc. in Chattanooga. And then in 1938 he joined Union Dry



Becomes Founder posthumously

Goods Co. also as vice president. The firm was later purchased by Davisons, Inc. and Mr. Leeds remained with the firm until his retirement in 1958.

Mr. Leeds was active in civic affairs in the Macon area. He was president of the Community Chest, Macon Retail Merchants Association and Grand Jurors Association. He also was a director of the Macon area development Commission and was instrumental in the founding of the local chapter of the American Association of Retired Persons.



Former Mayor is Founder 319

James O. Finks

James O. Finks, **Illinois '40**, of Shelbyville, Illinois, became Founder Member 319 on January 12, 1977. A local Shelbyville businessman, he has several farm, residential and commercial land holdings.

A former mayor and city council member, Finks is also a past commander of

the American Legion. He is treasurer of the board of directors of the East Central Illinois Health Systems Agency and a member of the board of directors of Shelby County Mental Health Association. President of the United Way, Finks is also a board member of MacMurray College and the United Methodist Church of Shelbyville.

◆
Val R. Marcy, **Dickinson '75**, has co-authored a paper entitled "Tissue Hypoxia Ischemia" which appeared in the *Advances of Experimental Medicine and Biology*. The article offers discussions on the mechanisms of oxygen sensing and possible oxygen sensors in various tissues. It also examines deleterious effects of the hypoxia and ischemia with particular reference to the brain. His findings will be read to a symposium of neurosurgeons in June of this year in Copenhagen, Denmark.

◆
Marcy is associated with the division of neurosurgery at the University of Pennsylvania.

◆
Lawrence W. DeMuth, Jr., **Colorado '51**, has been elected president of the Colorado Epilepsy Association. He currently is vice president and general counsel for Mountain Bell and is secretary-treasurer for the Colorado Association of Corporate Counsel.

◆
H. Merrill Plaisted III, **Washington & Lee '57**, of Richmond, Virginia was named Realtor of the Year by the Richmond Board of Realtors. The newly created award was given to Plaisted for his activity in civic and realtor affairs and for his business accomplishments.

◆
Plaisted is president of Morton G. Thalheimer, Inc. and is a former president of the Richmond Board of Realtors.

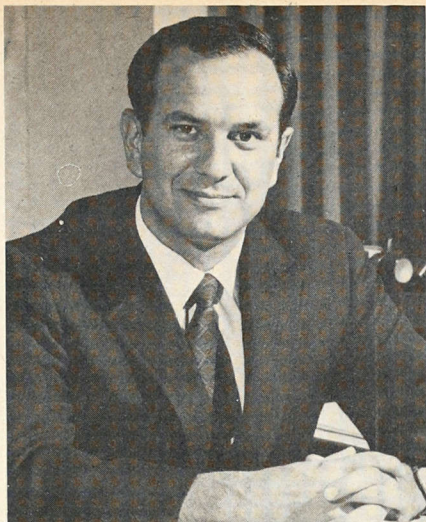
◆
Michaux Nash, Jr., **Southern Methodist '56**, has been appointed to the Texas Advisory Council of the Legal Services Corporation by Governor Dolph Briscoe.

◆
Nash will provide counsel to the corporation which appropriates funds for legal aid societies in the United States.

◆
Nash is senior vice president of United National Bank of Dallas. Prior to joining United National in 1976, Nash was executive vice president and advisory director of National Bank of Commerce, also of Dallas.

◆
Nash is also involved in several community activities including the Dallas Community Chest and he serves as a member of the executive committee of the Greater Dallas Crime Commission.

◆
Two ΣAE's were chosen for alumni posts at Davidson College. The new president of the Davidson Alumni Association is J. D. Ashmore '49 and one of the new Trustees is Robert Strickland '48.



◆
One of eleven inducted

Named to Hall of Fame

◆
George A. Conn, **Northwestern '55**, of Great Falls, Virginia, has been named to the National Wheelchair Basketball Association (NWBA) Hall of Fame. The presentation was made at the association's 29th annual tournament held in April. In the 29 year history of the NWBA, only eleven individuals have been inducted into the Hall of Fame.

◆
Conn is currently a Special Assistant to the Director of the White House Conference on Handicapped Individuals.

◆
Following an automobile accident in 1957 which resulted in paralysis of both legs, Conn began a lengthy rehabilitation period. Then he began swimming and wheelchair basketball. From 1961 to 1964, he held three national and four international records in swimming. He holds 17 gold medals for Paralympic competition in pentathlon, swimming and basketball.

◆
During his nine year tenure as president of the NWBA, the organization grew from five conferences, twenty-two teams and less than 300 players to 22 conferences, 108 teams and more than 1,300 players. The organization now has teams across the United States and Southern Canada.

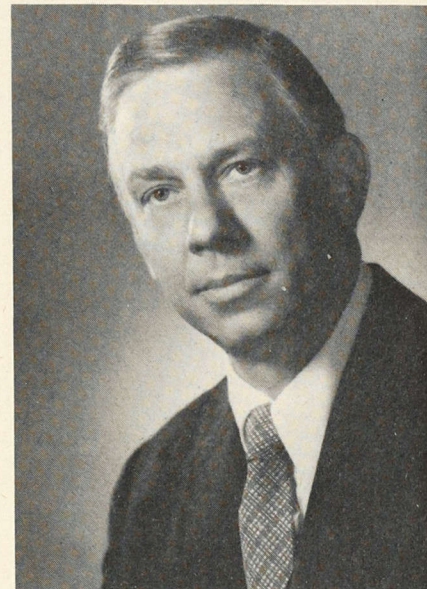
◆
Dr. Warren G. Walker, **Colorado State '45** and Dr. William A. Sumner, **Cornell '54**, have been elected officers of the American Animal Hospital Association.

◆
Walker served as president-elect during 1976 and has been a member of the association since 1955. He has served as treasurer, vice president and a regional director of the association.

◆
His present practice is with the La Canada Pet Clinic but he also established a small animal hospital in Sunland and La Crescenta, California.

◆
Sumner, a member of the association since 1958, has served as a regional director, corporate secretary, member of the board of directors and membership chairman for the association.

◆
He is associated with the Greensboro Veterinary Hospital, Inc. in Greensboro, North Carolina specializing in small animal practice. He is also a member of the North Carolina Association of Professions and is a past president of the North Carolina Veterinary Medical Association.



◆
Elected advertising governor

◆
David B. Keith, **Houston '56**, has been elected Governor of the 10th District of the American Advertising Federation. He is currently President-Corporate Communications of the Houston Natural Gas Corporation of Houston, Texas. The 10th District includes the advertising federations in Texas, Oklahoma, Arkansas and Louisiana.

◆
Keith is responsible for advertising, public relations and publications at Houston Natural Gas. He is past president of the Houston Advertising Federation and is also active in the Public Relations Society of America, Houston Chamber of Commerce, American Gas Association, Girl Scouts and American Red Cross.

Michigan Gamma's 50th

◆
February 19, 1977 marked the 50th anniversary celebration of **Michigan Gamma** at **Michigan State**. One hundred and five alumni, chapter members and local society members were in attendance. The celebration occurred almost to the hour of the original installation banquet held at the Olds Hotel and presided over by Past ESA Arthur Tuttle.



Celebrants with ESR Hotaling

Opening remarks were made by Ralph Recor, former Archon of Province Pi and Omega. He gave a brief history of the local society and the events leading to the granting of the Michigan Gamma charter. In addition, James Quello '35, Commissioner of the Federal Communications Commission, gave the main address. Six fifty-year certificates were presented and William Muer '37 and Bill Fiscus '50 became Founder Members of The Levere Memorial Foundation.

The chapter sponsored a buffet and reception on February 18 at the House.

According to Don Baxter '26, "Friends" was never sung with more feeling than at the conclusion of our 50th anniversary celebration. The 'lingering presence of the ghost of good fellowship rare' was dominant in Kellogg Center, East Lansing on the evening of February 19, 1977."

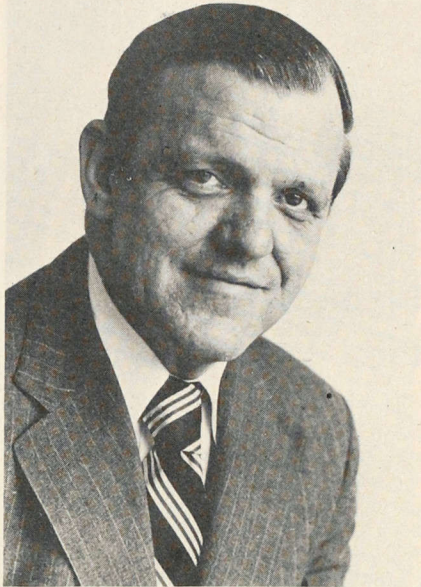
Chiran Thapa, Dickinson '63, who is Secretary to His Majesty the King of Nepal, accompanied him from Chengtu in Szechwan, China to Lhasa in Tibet. The king was the first head of state to visit Tibet since the Chinese occupation.

Thapa wrote, "It is strangely calm and peaceful here. The roads of Lhasa are practically all tarred, and we have already seen an agricultural implement factory, and a carpet weaving factory. To think that we could see all of this on the 'roof of the world.'"

Thapa, along with the King of Nepal, attended the Fifth Summit Conference of Non-Aligned Countries in Colombo, Sri Lanka, last fall.

Charles L. Larson, DePauw '57, has been appointed vice president-sales for Union Service Distributor, Inc., a general distributor for shares of the Union Service Group of Mutual Funds.

Larson has much experience in the mutual fund industry and most recently served as regional vice president of Dreyfus Sales Corporation. In addition, he is a director of the International Association of Financial Planners and a member of the Sales Marketing Club of New York.



Larson named v-p

Stearns Rogers Inc. of Denver, Colorado has thirteen ΣAE's in its employ. They include, Leonard H. Gemmill, Colorado '41; Robert L. Druva, Colorado State '48; Phil R. Asel, Colorado School of Mines '34; James M. Lane, Jr., Colorado '40; Aaron Green, Arkansas '47; Fred Ellis, Iowa State '41; James Baugh, Colorado School of Mines '50; Robert B. Massey, Colorado State '50; William Boyer Colorado State '51; Gordon G. Graham, Colorado State '44; and Norman Stout, Colorado State '54.

Stearns Rogers is a leading engineering and construction firm serving the process industries. Included in their design and construction are mining and metallurgical mills and smelters, power plants, oil refineries, and natural gas processing plants.

Gregory J. Gerendas, Northern Illinois '70, of Rolling Meadows, Illinois, has been named a career representative of the Chicago/Bitter general agency of National Life Insurance Company of Vermont. The suburban Chicago firm serves the seven counties of the metropolitan area.

Gerendas, prior to joining the Bitter firm, was a systems coordinator and programmer/analyst for Kemper Insurance Company.

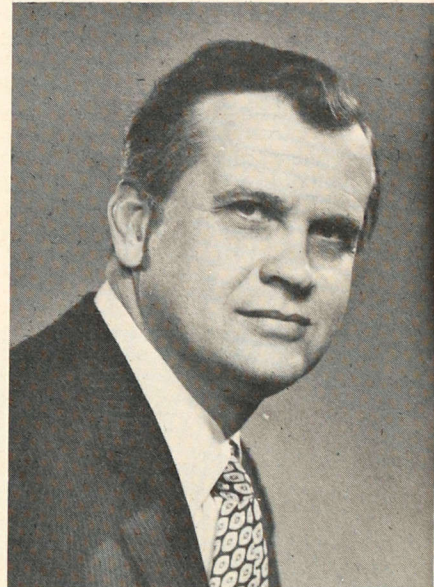
C. Robert Smith, Bowling Green '49, has been elected to receive the 33rd Degree by the Ancient Accepted Scottish Rite of Freemasonry, Northern Masonic Jurisdiction. He was elected to receive the highest honorary degree at the annual meeting held last October and the degree will be conferred next September in Pittsburgh.

Smith is employed by Champion Spark Plug Company in Toledo, Ohio. He is presently serving as Catalog Supervisor.

William C. Golz, Wisconsin '49, of Brookfield, Wisconsin, has been awarded the Hall of Fame Medal by the Equitable Life Assurance Society of the United States.

Golz qualified for the award by reaching the National Leaders Corps 10 times during his career. He has been with Equitable for 28 years and received the National Quality Award for 26 years.

He is a pension plan consultant and estate planner for Equitable.



Sally elected president

William D. Sally, Missouri '55, has been elected president of the Community Associations Institute, Washington, D.C. Sally is vice president of Baird & Warner, Inc., and general manager of the company's property management division.

The Community Associations Institute was established by the Urban Land Institute and the National Association of Home Builders in 1973. Its purpose is to carry out research and educational programs to assist community associations.

Sally is a licensed real estate and insurance broker. He is immediate past chairman of the Property Management Council of the Chicago Real Estate Board and a charter member of the Academy of Authors of The Institute of Real Estate Management.



Fine Arts Council appointee

James Y. Arnold, Jr., **Georgia Tech '45**, has been appointed to the Fine Arts Council of Florida. He is president of Norton Gallery and School of Art and Palm Beach Planning, Inc., a consultant firm.



A call has gone out for any ΣAE 's in the New Orleans area who want to get involved in alumni association activities. Dr. James Kiser is attempting to revitalize the association and any one interested in the revitalization should contact him at 3 Kinder Lane, River Ridge, Louisiana 70123.



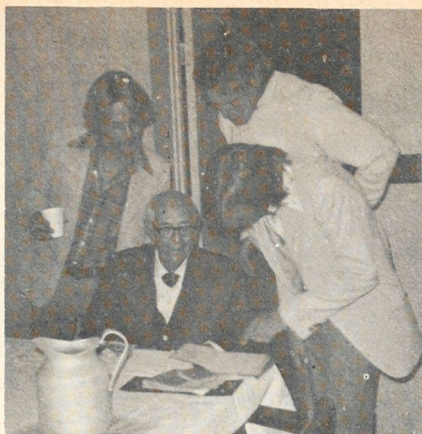
Keith Gunzenhauser, **Simpson '56**, has been elected vice-president, finance for Central Life Assurance Co. of Des Moines, Iowa.



John W. Schaefer, **Syracuse '55**, has been elected vice president of the Autodata Division of Acurex.

Schaefer joined Acurex in 1963 as a staff engineer and was later promoted to manager of engineering analysis and in 1970 to director of engineering systems of the Aerotherm Division. In 1976 he was appointed general manager of Autodata, prior to which he served as assistant general manager of the Aerotherm Division.

Autodata's products include micro-processor-based and specialty data acquisition systems for a wide range of process control and energy applications. A new product is the Autodata Nine Data Acquisition System which can be used for pollution emissions monitoring and reporting systems.



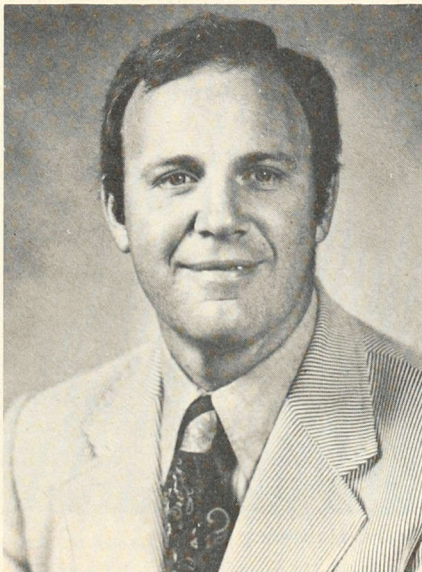
Brown honored by chapter

Dywyki Club Member

During the **Indiana** homecoming celebration last fall, the chapter honored William Brown '08, the last living member of the Dywyki Club.

Brown presented the chapter with a cast iron coat-of-arms, dating back to the founding of the chapter. The chapter, in turn, presented Brown with its only photograph of the founding local.

At an informal luncheon, Brown spoke of Levere, the installation of Indiana Gamma, and the chapter house, which burned in 1969.



General manager at GE

Robert E. Fowler, Jr., **Vanderbilt '57**, has been named general manager of the Manufacturing Division of General Electric's Major Appliance Group. In addition, James F. West, **Michigan State '52**, has been named general manager of the Room Air Conditioner Department, succeeding Fowler.

Fowler joined General Electric in 1957 and has held engineering assignments in

the refrigerator and range areas before his appointment as manager of range manufacturing in 1969. He headed the Room Air Conditioner Department from March 1976 to the present.

West has been associated with General Electric for 25 years. Most recently he was program manager for microwave products but has also been advertising manager and dealer sales manager in the Louisville area. He also was range retail marketing manager. His last position before he took over the microwave products program was as general manager of marketing for dishwasher and disposal products.

Both men are headquartered in the Louisville office of General Electric.



Curtis Shipley, **Arkansas '55** and H. L. Hembree, **Arkansas '53**, have been named chairman and vice chairman respectively of the Northwest Action Committee. Shipley is vice president and general manager of the Shipley Baking Company of Fayetteville and Hembree is chairman and chief executive officer of Arkansas Best Corporation.

The Committee was formed in 1975 and consists of members of the Chambers of Commerce of Bentonville, Rogers, Siloam Springs, Springdale, Fayetteville, Van Buren and Fort Smith, Arkansas. The group has been a principal backer of a four-lane highway in Northwest Arkansas.



Richard C. Calvin, **Cincinnati '64**, has been named Senior Product Specialist for Coated Products at Armco Steel in Middletown, Ohio.

Calvin joined Armco in 1965 and was most recently a district sales representative for the Detroit area.



Richard L. Holman, **Nebraska '69**, has accepted a post as a city reporter for the *Monterey Peninsula Herald* in Monterey, California. Since 1972, Holman has been a news reporter for the *Lincoln Star*, covering the capitol and state government.



David G. Curry, **Washington-St. Louis '60**, has been named corporate executive officer of Virginia National Bank. He formerly served as senior vice president and trust officer for the bank.

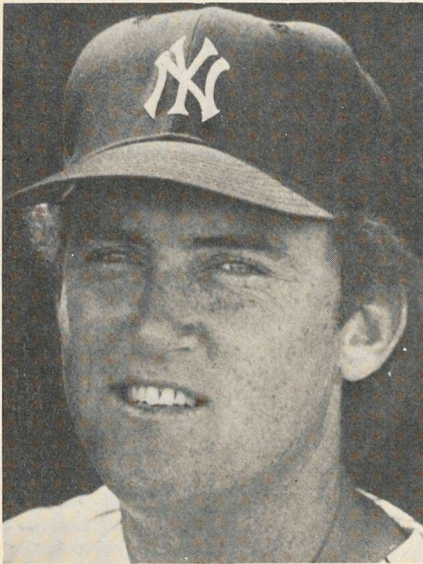
Curry joined the bank in 1969 as a vice president and trust officer for the Northern Region Trust Department. In 1972 he was promoted to senior vice president and trust officer. Later he was transferred to the bank's Norfolk headquarters to head Trust New Business on a statewide basis.

A member of the American, Maryland and District of Columbia Bar Associations, Curry also serves as the Virginia representative to the State Liaison Council of the American Bankers Association Trust Division.

founders' day '77

THE Award Presented

The New York City Alumni Association has, this year, instituted The Highest Effort (THE) Award. The award is presented to those alumni who have distinguished themselves in the fields of sports, business, finance, education, the arts, communication, government and law.



Graig Nettles

The eleven recipients were honored at the association's Founders' Day dinner on March 9. The recipients included Graig Nettles, **San Diego State '65**, #9 on the New York Yankees. Last year he led the American League in home runs and in 1975 was chosen for the All Star team.

The award for the arts was presented to Robert Goodloe, **Northwestern '58**, a baritone with the Metropolitan Opera. He has appeared in more than 30 roles and has sung with the Minneapolis, Kansas City and Des Moines operas.

Neal Gilliatt, **Indiana '39**, is executive vice president of Interpublic Management Co., the world's largest advertising group. He was presented the award for business. In addition, he is a director of Chemed Corporation and the American Institute of Religion and Health. He is also a trustee of Burlington Industries, Indiana University Foundation, and Millikin University.

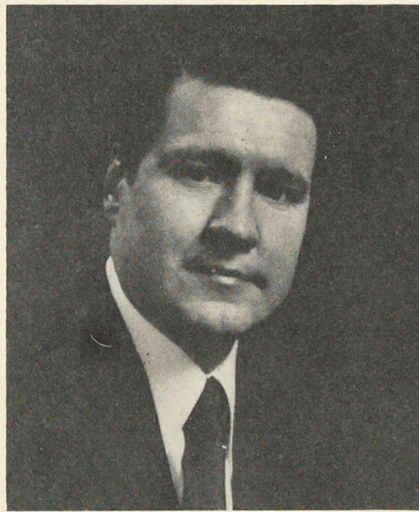
The recipient for communications was Hughes Rudd, **Missouri '43**. He is in his fourth season as anchorman of the CBS



Hughes Rudd

Morning News. Previously he served as a CBS news correspondent in Moscow, Bonn, Berlin, Africa, the Middle East, the Caribbean, and Vietnam.

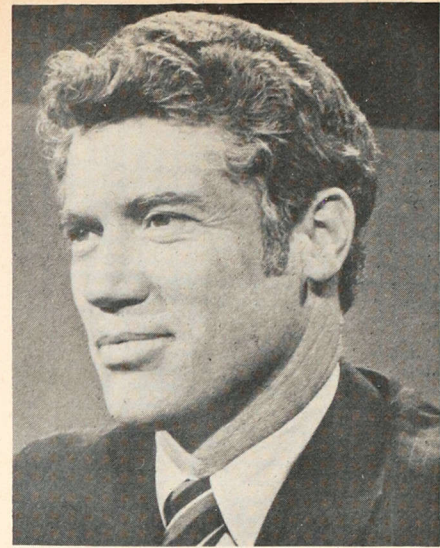
The finance winner was Frank McKinney, Jr., **Indiana '61**. He is presently chairman of the board and chief executive officer of American Fletcher Bank of In-



Frank McKinney

dianapolis. He is a director of the Allied International Bank, Indiana Bell Telephone, Indianapolis Power & Light, and Blue Shield of Indiana, to name a few. In addition, he won a bronze medal at the 1956 Olympics for the backstroke and a silver and gold medal at the 1960 Olympics. In 1975 he was inducted into the International Swimming Hall of Fame.

The newly appointed Senator from Minnesota, Wendell Anderson, **Minnesota '56**, received the award for government. Until his recent appointment, he served at the



Wendell Anderson

state government level and was governor for five years. He served as Chairman of the Democratic Governors Conference and was also a member of the U.S. Olympic Committee.

The recipient in law is John Hill, **Texas, '65** Attorney General for the State of Texas. He is their 45th Attorney General and recorded the highest number of votes for any candidate in the 1974 election. He was the first attorney general to institute an anti-corruption strike force and also to appoint a woman division chief. He was named the outstanding state attorney general by *Washington Monthly Magazine* and one of the foremost political leaders in the "Sun Belt" by the *New York Times* and *Time Magazine*.



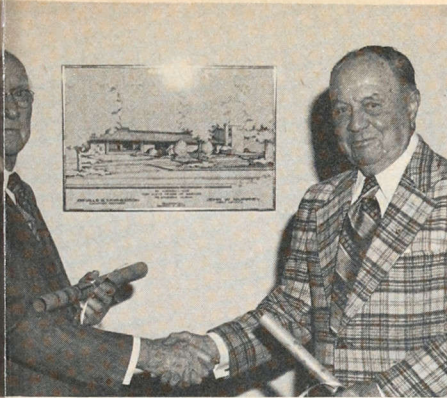
The **Abilene, Texas** Alumni Association held a luncheon to celebrate Founders' Day on March 9. The celebration, held at the Jamaica Inn in Abilene, saw nine in attendance including association president Dr. Alan L. Staley, **Colorado State '38**, and association secretary Dr. Charles Garraway, **Mississippi State '62**.



Three fifty-year certificates were presented at the **Dayton, Ohio** Founders' Day observance. The March 3 celebration was held at the Stockyards Inn in Dayton, and E & L Consultant Tim Tolan spoke to the group.

60th Anniversary Celebrated

The chapter house was the scene of the **Arizona Alpha** Alumni Association Founders' Day celebration. The dinner observance also marked the 60th anniversary of the chapter.



Charter Members McPherson and Murphey

Orville "Speedy" McPherson '17, a charter member of the **Arizona** chapter, was honored as well as John Murphey '20, the chapter's first initiate. Both were presented with lithographs of the chapter house.

Charles Hall '64, Clark Rorback '77, and Don Budinger '64 spoke to the 90 assembled.

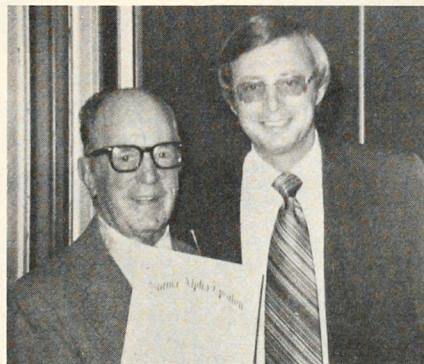
Province Omicron Archon Dave Covert spoke at the **South Carolina Delta** observance of Founders' Day. The evening celebration was held at Seawells Restaurant in Columbia and seven awards were presented to **South Carolina** chapter members and alumni. Among those presented were the Stringfellow Award for Alumni Service to Charles W. Jacocks III '58, the Scholarship Award to Bill Spears '79, the Intramural Award to Bob Courtet '79, and the Best Active Award to Bill Merkel '78.

With 108 in attendance, the joint **Atlanta and Marietta Alumni Association** Founders' Day was held at Aunt Fanny's Cabin in Smyrna, Georgia. Seven fifty year certificates were presented by Robert Cousins, **Mercer '23**, and each of the seven gave an impromptu speech upon receipt of the award. In addition, Bill Mason, **Vanderbilt '44**, was awarded the Order of the Phoenix for his continued activity in the Decatur Alumni Association rush program, Ben Witcher, **Emory '75**, was presented the Outstanding Young Alumni Award by the Emory chapter and the Robert L. Cousins award was presented to Georgia Beta for their successful fall rush.

Over 40 **Mountain States** alumni gathered on March 9 at the Cosmopolitan in Denver to celebrate Founders' Day. The cocktail hour was presided over by Steve Sheridan, **Colorado '66**, new president of the association. All members introduced themselves giving pertinent data. In addition, a fifty-year certificate was awarded to James E. Blue, **Colorado '30**.

El Paso Celebrates

The Coronado Country Club was the location of the **El Paso** celebration of Founders' Day. The dinner observance was highlighted by a run-down of alumni association activities for the year and also of chapter activities. Two fifty year certificates were presented to George C. Staten, **Stanford '30**, and David E. Price, **Arizona '28**. In addition, Earl Maxon, **Texas '70**, was cited for his four years of work with Texas Gamma at Texas-El Paso, by the presentation of the Outstanding Alumnus Award. The final event of the evening was the election of new association officers.



Kistenmacher presents award

The **Richmond Alumni Association** celebrated Founders' Day on March 12 at the Virginia Tau chapter house. ESW Richard Generelly spoke to the 70 gathered alumni, actives, and friends at the Richmond chapter.

March 4 marked the day the **Kansas City Alumni Association** held its Founders' Day observance. The dinner was held at the Homestead Country Club in Prairie Village and saw the presentation of several awards along with fifty year certificates.

The Joe H. Vaughan Scholarship Trophy was presented to Kansas Beta, the Hammerstein Civic Service Award was presented jointly to Kansas Gamma and Missouri Gamma, and the Leslie Leon Shaw award was presented to Kansas Gamma. In addition 10 fifty year certificates were awarded.

The alumni association had as their guest speaker Past ESA Roy Miller and the Honor Man for 1977 was Lawrence R. Wagner, **Kansas '44**.

169 in Attendance

The Porter Street Station was the scene of the **Detroit Alumni Association** Founders' Day celebration. The observance saw 169 men in attendance, nine of whom received fifty-year certificates.

Bo Schembechler, **Miami '51**, Michigan's



Michigan Delta receives award

head football coach, spoke to the group on "College Sports and Its Problems." In addition, the association presented the annual "Most Deserving Michigan Chapter Award" to Michigan Delta. The chapter will receive a \$150 donation from the association.

The Mississippi Power and Light Lodge in Jackson was the site of the 1977 Founders' Day celebration for the **Central Mississippi Alumni Association**. The dinner, held on March 9, saw the awarding of six fifty-year certificates and also the election of new association officers. The keynote speaker for the evening was Province Theta Archon Ronald Doleac.

In addition, a wall hanging of photographs from the reinstatement of Mississippi Gamma was presented to the chapter from the house corporation as was a photo of Past ESA Joseph Mancini pinning the permanent EA's badge on Bobby Grisham, **Mississippi '76**.

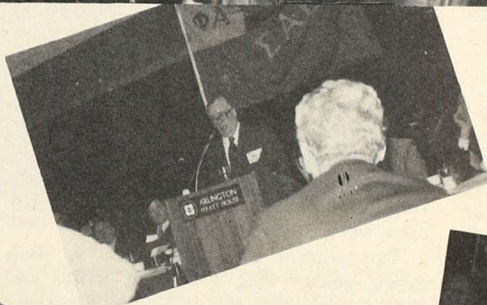
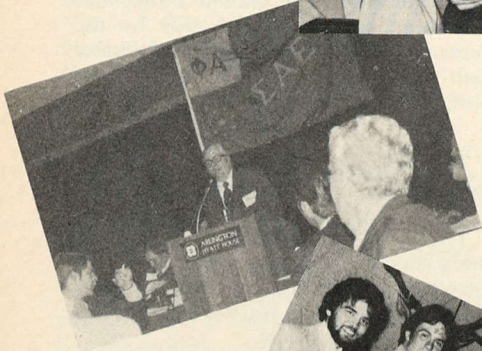
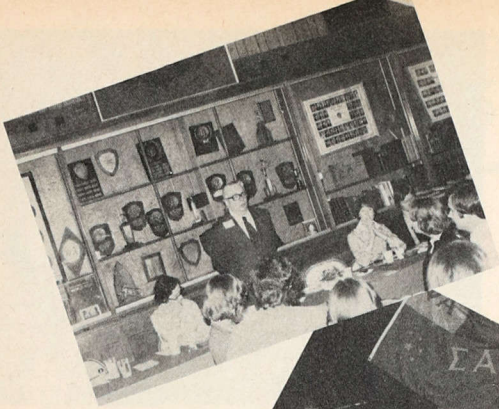
ESA Russell Heuer was the keynote speaker at the **Gettysburg Founders' Day** celebration on March 12, 1977. During his remarks, Heuer stated that ΣΑΕ was "friendship, a tie that binds all of us together at the local chapter level and elsewhere among the alumni throughout the land." This was evidenced by the presentation of seven fifty-year certificates and also the introduction of the new pledges of the chapter.

The **Syracuse Alumni Association** held its Founders' Day celebration on March 4 at the University Club in Syracuse.

The thirty-two members in attendance saw a slide presentation by Karl Wondrak, Director of Extension, and heard a progress report on the reactivation of New York Delta at Syracuse.

March 11 marked the day of the **Jacksonville Alumni Association** Founders' Day celebration. The dinner observance was preceded by a golf and tennis tournament beginning shortly after noon.

Six fifty year certificates were presented at the celebration as well as other business of the association and a discussion of local extension possibilities.



directory

The Supreme Council

Eminent Supreme Archon: DR. LOUIS E. SMITH, Drake '51 (Iowa Delta), 108 North J St., Indianola, IA 50125.

Eminent Supreme Deputy Archon: RICHARD F. GENERELLY, George Washington '47 (Wash. City Rho), 1700 K St. N.W., Washington, DC 20006.

Eminent Supreme Warden: JAMES D. PETERSON, Minnesota '57 (Alpha), 1750 Hennepin Ave., Minneapolis, MN 55403.

Eminent Supreme Herald: JOHN B. WARREN, JR., Emory '59 (Ga. Epsilon), 4760 Powers Ferry Rd., N.W., Atlanta, GA 30327.

Eminent Supreme Chronicler: THOMAS R. KESSLER, Kent State '61 (Ohio Lambda), 43 East 10th #2D, New York, NY 10003.

Collegiate Council Chairman: RICHARD H. KELLEY, Western Kentucky '76 (Beta), 713 McElroy, Bowling Green, KY 42101.

Honorary Eminent Supreme Archon

DUNCAN D. LOW, Stanford '30 (Calif. Alpha), 1020 Russ Bldg., San Francisco, CA 94104.

The National Office

1856 Sheridan Rd., P.O. Box 1856, Evanston, IL 60204, Telephone: Area Code 312-475-1856.

Eminent Supreme Recorder: JACK R. HOTALING, Syracuse '53 (N.Y. Delta).

Director of Finance and Development: GEOFFREY C. WOIE, Minnesota '75 (Alpha).

Director of Chapter Services/Programming: KENNETH D. TRACEY, Eastern N.M. '69 (N.M. Alpha).

Director of Extension: RAY J. ARTIGUE, Arizona State '76 (Beta).

Educational and Leadership Consultants: MICHAEL E. GARROLD, Allegheny '76 (Pa. Omega); JAMES P. HAMLIN, Northern Arizona '75 (Gamma); R. CLINTON SMITH, Oklahoma '77 (Kappa); CLIFFORD B. TRACY, JR., Northwestern '77 (Ill. Psi-Omega).

Publications and Office Coordinator: BARBARA D. SEARLE.

Editor of *The Record*: DR. JOSEPH W. WALT, Tennessee '47 (Kappa), Simpson College, Indianola, IA 50125.

Living Past Eminent Supreme Archons

EMMETT B. MOORE, Mont. State '24 (Mont. Alpha), 1949-1951, 296 Circle Dr., Panorama City, Olympia, WA 98503.

DR. ROBERT R. AURNER, Iowa '20 (Iowa Beta), 1951-1953, P.O. Box 3434, Carmel, CA 93921.

DR. CHESTER D. LEE, Iowa State '27 (Iowa Gamma), 1953-1955, 111 Lynn Ave. #904, Ames, IA 50010.

LEO S. CADE, Oklahoma '22 (Okla. Kappa), 1957-1959, 402 W. Oklahoma, Anadarko, OK 73005.

HOWARD P. FALLS, Richmond '33 (Va. Tau), 1959-1961, 815-817 West Broad St., Richmond, VA 23220.

DR. GLEN T. NYGREEN, U. of Wash. '39 (Wash. Alpha), 1963-1965, 97 Highland Road, Scarsdale, NY 10584.

GURNETT STEINHAUER, Denver '31 (Colo. Zeta), 1965-1967, 3264 S. Oneida Way, Denver, CO 80224.

ROY L. MILLER, Drake '27 (Iowa Delta), 1967-1969, 621 41st St., Des Moines, IA 50312.

PAUL B. JACOB, JR., Miss. State '44 (Miss. Theta), 1969-1971, Box 5252, Mississippi State, MS 39762.

ROBERT VAN BLARICOM, Ohio State '33 (Ohio Theta), 1971-1973, 527 Lodge Lane, Kalamazoo, MI 49009.

JOSEPH A. MANCINI, Cincinnati '35 (Ohio Epsilon), 1973-1975, 355 Valley Dr., Brisbane, CA 94005.

RUSSELL P. HEUER, JR., Pennsylvania '55 (Theta) 1975-1977, 226 W. Rittenhouse Sq., Philadelphia, PA 19103.

Board of Trustees

GEORGE T. ILSE, Syracuse '49 (N.Y. Delta), President (1979), 500 Fifth Ave., #1125, New York, NY 10036.

Extension Investigation Committee

ROY L. MILLER, Drake '27 (Iowa Delta), Chairman, 621-31st St., Des Moines, IA 50312.

Counsel for Fraternity

NORMAN H. PRITCHARD, Franklin '04 (Ind. Alpha), Vedder, Price, Kaufman & Kammholz, 115 S. LaSalle St., Chicago, IL 60603.

Committee on Chapter Housing

JOSEPH A. MANCINI, Cincinnati '35 (Ohio Epsilon), 355 Valley Dr., Brisbane, CA 94005.

Educational Advisor

GEORGE R. HAMRDLA, Stanford '60 (Calif. Alpha), Box 2683, Stanford, CA 94305.

Committee on National Laws

NORMAN H. PRITCHARD, Franklin '04 (Ind. Alpha), Chairman, Vedder, Price, Kaufman & Kammholz, 115 S. LaSalle St., Chicago, IL 60603.

Leadership School Planning Committee

THOMAS R. KESSLER, Kent State '61 (Ohio Lambda), Chairman, 43 East 10th #2D, New York, NY 10003.

Lever Memorial Temple Building

Committee

WARREN E. GRIMSLEY, Western Michigan '31 (Mich. Delta), Chairman, 2747 Hurd Ave., Evanston, IL 60201.

Advisory Council of The Lever Memorial Foundation

NORMAN H. PRITCHARD, Franklin '04 (Ind. Alpha), (1981), Chairman, Vedder, Price, Kaufman & Kammholz, 115 S. LaSalle St., Chicago, IL 60603.

Lever Memorial Temple Chaplain

DR. ERSKINE M. JEFFORDS, Syracuse '18 (N.Y. Delta), 9517 Lincolnwood Drive, Evanston, IL 60203.

Artist of The Lever Memorial Temple

ERALDO CARUGATI, Simpson '41 (Iowa Sigma), 1567 Ridge Ave., Evanston, IL 60201.

25 Provinces and 184 Chapters

In corresponding with Chapters address letters "Eminent Archon," "Eminent Correspondent," etc.

Province Archons

ALPHA—GERALD J. ALLEYNE, 273 Chestnut St., Lynn, MA 01902.

BETA—Q. TODD DICKINSON, 380 Jefferson Dr., Pittsburgh, PA 15228.

GAMMA—JAMES G. SAKERS, 4613 Calvert Rd., #10, College Park, MD 20740.

DELTA—RICHARD M. KIMBLER, 265 Emming St., Cincinnati, OH 45219.

EPSILON—W. CHARLES WITZLEBEN, 3064 Antler Trail, Marietta, GA 30062.

ZETA—JOHN F. MILLER, 6501 Highway 9, Parkville, MO 64152.

ETA—J. CLARKE HOUSTON, III, 715 Franklin St., Denver, CO 80218.

THETA—M. RONALD DOLEAC, 701 South 17th Ave., Hattiesburg, MS 39401.

IOTA—K. MARTIN HUFFMAN, 326 N. Wilson Ave., Morehead, KY 40351.

KAPPA—DANIEL CASTILLO, 2118 N. Garden, Fresno, CA 93703.

LAMBDA—PORTER P. UNDERWOOD, 10125 S.W. Old Orchard Ln., Portland, OR 97225.

MU—JOHN E. McCOY, 3387 MacArthur Rd., Decatur, IL 62526.

NU—WALTER B. BULL, JR., 750 Old Lancaster Rd. #409B, Berwyn, PA 19312.

NU-EPSILON—THOMAS M. L. GILLESPIE, 301 E. Heather Dr., Key Biscayne, FL 33149.

XI—(To be elected.)

OMICRON—DAVID A. COVERT, 2361 Camelia St., Cayce, SC 29033.

PI—RICHARD A. DANIELS, 4761 Dalebridge Rd., #E-4, Warrensville Hts., OH 44128.

RHO—RONALD F. EBNER, 506-18th Ave., So., Fargo, ND 58102.

SIGMA—JOHN K. MOTT, 2217 South W St., Ft. Smith, AR 72901.

TAU—LOREN J. BOONE, 502-8th Ave., Brookings, SD 57006.

UPSILON—CHARLES A. PINEDA, 2133 Calle de Sebastian, Santa Fe, NM 87501.

PHI—LARRY G. BREWER, 1120 Gerald, Missoula, MT 59801.

CHI—WALTER G. DeAGUERO, 626 N. Howard #15, Montebello, CA 90640.

PSI—DARELL W. GIBSON, 604 W. Charles, Muncie, IN 47305.

OMEGA—JAMES H. LEFLAR, 16524 Trinity, Detroit, MI 48219.

The Chapters

ALA. ALPHA-MU (Auburn), 550 West Magnolia Ave., Auburn, AL 36830.

ALA. IOTA (Birmingham-Southern), BSC Box A53, Birmingham, AL 35204.

ALA. MU (Alabama), Box 1856, University, AL 35486.

ALA. CHI (South Alabama), 275 Bayfront Dr., Mobile, AL 36605.

ARIZ. ALPHA (Arizona), 1509 E. 2nd St., Tucson, AZ 85719.

ARIZ. BETA (Ariz. State), 706 Alpha Dr., Tempe, AZ 85281.

ARIZ. GAMMA (Northern Ariz.), CU Box 7679, Flagstaff, AZ 86011.

ARK. ALPHA-UPSILON (Arkansas), 110 Stadium Dr., Fayetteville, AR 72701.

ARK. BETA (Arkansas-Little Rock), 3122 S. Taylor, Little Rock, AR 72204.

CALIF. ALPHA (Stanford), P.O. Box 6507, Stanford, CA 94305.

CALIF. BETA (Calif.-Berkeley), 2722 Bancroft Way, Berkeley, CA 94704.

CALIF. GAMMA (U.S.C.), 833 W. 28th St., Los Angeles, CA 90007.

CALIF. DELTA (U.C.L.A.), 655 Gayley, Los Angeles, CA 90024.

CALIF. EPSILON (Occidental), 4909 Rangeview Ave., Los Angeles, CA 90042.

CALIF. ZETA (San Jose State), 296 South 10th St., San Jose, CA 95112.

CALIF. ETA (Calif.-Santa Barbara), 6553 Cordoba, Goleta, CA 93017.

CALIF. THETA (San Diego State), 5076 College Pl., San Diego, CA 92115.

CALIF. IOTA (Calif. State-Fresno), 1469 E. Joyal Dr., Fresno, CA 93710.

CALIF. KAPPA (Calif.-Davis), 521 Russell Blvd., Davis, CA 95616.

CALIF. LAMBDA (Calif. State-Long Beach), 4041 E. 4th St., Long Beach, CA 90814.

CALIF. MU (Calif. State-Los Angeles), 2280 Cavanagh Circle, Los Angeles, CA 90032.

CALIF. NU (Calif. State-Northridge), 17806 Plummer St., Northridge, CA 91324.

CALIF. XI (Calif. State-Sacramento), 1081 La Sierra Dr., Sacramento, CA 95825.

CALIF. PI (Calif. State-Fullerton), 2101 Teri Pl., Fullerton, CA 92631.

CALIF. RHO (Univ. of Pacific), 819 Fraternity Cir., Stockton CA 95211.

CALIF. SIGMA (San Francisco), 2130 Fulton St., San Francisco, CA 94117.

COLO. ALPHA (Northern Colo.), 814 19th St., Greeley, CO 80631.

COLO. DELTA (Colo. State), 306 W. Laurel St., Fort Collins, CO 80521.

COLO. ZETA (Denver), 2050 S. Gaylord St., Denver, CO 80210.

COLO. I. LAMBDA (School of Mines), P.O. Box 472, Golden, CO 80401.

COLO. CHI (Colorado), c/o Richard Cunningham, 880 Orman Dr., Boulder, CO 80302.

FLA. ALPHA (Miami), 5850 San Amaro Dr., Coral Gables, FL 33146.

- FLA. BETA (Fla. State), FSU Box 6697, Tallahassee, FL 32306.
 FLA. GAMMA (Fla. Southern), FSC Box 4758, Lakeland, FL 33802.
 FLA. DELTA (South Fla.), Univ. Center Box 2366, Univ. of So. Fla., Tampa, FL 33620.
 FLA. EPSILON (Fla. Tech.), P.O. Box 26293, Orlando, FL 32816.
 FLA. SIGMA (West Fla.), 1775 E. 9 Mile Rd., Pensacola, FL 32504.
 FLA. UPSILON (Florida), 2 Fraternity Row, Gainesville, FL 32603.
 GA. BETA (Georgia), 247 Pulaski St., Athens, GA 30601.
 GA. EPSILON (Emory), Emory Drawer Z, Atlanta GA 30322.
 GA. ETA (Oglethorpe), 3683 Peachtree Rd., N.E., Atlanta, GA 30319.
 GA. SIGMA (Valdosta State), 1605 N. Patterson St., Valdosta, GA 31601.
 GA. PHI (Georgia Tech), 221 4th St., N.W., Atlanta, GA 30313.
 GA. PSI (Mercer), Mercer Box 94, Macon, GA 31207.
 IDAHO ALPHA (Idaho), 920 Deakin St., Moscow, ID 83843.
 ILL. ALPHA (Monmouth), 923 E. Euclid, Monmouth, IL 61462.
 ILL. BETA (Illinois), 211 E. Daniel St., Champaign, IL 61820.
 ILL. GAMMA (Northern Ill.), 917 Greenbrier Rd., DeKalb, IL 60115.
 ILL. DELTA (Millikin), 1165 W. Main St., Decatur, IL 62522.
 ILL. EPSILON (Bradley), 1311 W. Barker, Peoria, IL 61606.
 ILL. PSI-OMEGA (Northwestern), 2341 Sheridan Rd., Evanston, IL 60201.
 IND. ALPHA (Franklin), 800 E. Monroe St., Franklin, IN 46131.
 IND. BETA (Purdue), 406 Littleton St., W. Lafayette, IN 47906.
 IND. GAMMA (Indiana), 1115 N. Jordan, Bloomington, IN 47401.
 IND. DELTA (DePauw), 509 S. Locust St., Greencastle, IN 46135.
 IND. EPSILON (Evansville), 1723 Lincoln Ave., Evansville, IN 47714.
 IND. ZETA (Ball State), 525 Riverside Ave., Muncie, IN 47303.
 IND. SIGMA (Ind. State), 1320 S. Sixth St., Terre Haute, IN 47802.
 IOWA BETA (Iowa), 932 College, Iowa City, IA 52240.
 IOWA GAMMA (Iowa State), 140 Lynn Ave., Ames, IA 50010.
 IOWA DELTA (Drake), 1235 34th St., Des Moines, IA 50311.
 IOWA SIGMA (Simpson), 705 North E St., Indianola, IA 50125.
 IOWA CHI (Northern Iowa), 1113 W. 23rd St., Cedar Falls, IA 50613.
 KANS. ALPHA (Kansas), 1301 W. Campus Rd., Lawrence, KS 66044.
 KANS. BETA (Kansas State), 1015 N. Denison, Manhattan, KS 66502.
 KANS. GAMMA (Wichita State), 1714 N. Fairmont, Apt. 10, Wichita, KS 67208.
 KY. BETA (Western Ky.), 1410 College St., Bowling Green, KY 42101.
 KY. GAMMA (Morehead State), Morehead Box 1265, Morehead, KY 40351.
 KY. DELTA (Eastern Ky.), ECU Coates Bldg., Box 377, Richmond, KY 40475.
 KY. EPSILON (Kentucky), 410 Rose Ln., Lexington, KY 40508.
 KY. KAPPA (Centre College), Box 738X, Danville, KY 40422.
 LA. ALPHA (Southwestern La.), 1021 Johnston, Lafayette, LA 70501.
 LA. EPSILON (La. State), Box EP, Baton Rouge, LA 70803.
 LA. TAU-UPSILON (Tulane), 1200 Broadway, New Orleans, LA 70118.
 MAINE ALPHA (Maine), 117 College Ave., Orono, ME 04473.
 MD. BETA (Maryland), 4 Fraternity Row, College Park, MD 20742.
 MASS. BETA-UPSILON (Boston), 29 Pratt, Allston, MA 02134.
 MASS. GAMMA (Harvard), Quincy House 319 Cambridge, MA 02138.
 MASS. DELTA (Worcester Tech), 6 Humboldt Ave., Worcester, MA 01609.
 MASS. IOTA-TAU (M.I.T.), 484 Beacon St., Boston, MA 02115.
 MASS. KAPPA (Massachusetts), 118 Sunset Ave., Amherst, MA 01002.
 MICH. ALPHA (Adrian), 1108 Michigan Ave., Adrian, MI 49221.
 MICH. GAMMA (Mich. State), 4950 S. Hagadorn, E. Lansing, MI 48823.
 MICH. DELTA (Western Mich.), 919 Short Rd., Kalamazoo, MI 49008.
 MICH. EPSILON (General Motors Inst.), G-3206 Beecher Rd., Flint, MI 48504.
 MICH. ZETA (Ferris State), Rankin Center Box 26, Big Rapids, MI 49307.
 MICH. IOTA-BETA (Michigan), 1408 Wash-tenaw Ave., Ann Arbor, MI 48104.
 MINN. ALPHA (Minnesota), 1815 University Ave., S.E., Minneapolis, MN 55414.
 MISS. GAMMA (Mississippi), P.O. Box 8228 University, MS 38677.
 MISS. THETA (Miss. State), MSU P.O. Drawer AM, Mississippi State, MS 39762.
 MISS. SIGMA (Southern Miss.), Box 472 Southern Sta., Hattiesburg, MS 39401.
 MO. ALPHA (Missouri), 24 E. Stewart Rd., Columbia, MO 65201.
 MO. BETA (Washington U.), 9 Fraternity Row, Box 82, St. Louis, MO 63130.
 MO. GAMMA (Westminster), 315 W. Fifth St., Fulton, MO 65251.
 MO. DELTA (Rockhurst), 5304 Tracy, Kansas City, MO 64110.
 MONT. ALPHA (Mont. State), 811 S. Willson Ave., Bozeman, MT 59715.
 MONT. BETA (Montana), 1120 Gerald Ave., Missoula, MT 59801.
 NEB. IOTA (Creighton), 2500 Cass St., Omaha, NB 68131.
 NEB. LAMBDA-PI (Nebraska), 635 N. 16th St., Lincoln, NB 68508.
 NEV. ALPHA (Nevada), 835 Evans Ave., Reno, NV 89502.
 N.H. ALPHA (Dartmouth), 38 College St., Hanover, NH 03755.
 N.H. BETA (New Hampshire), 28 Madbury Rd., Durham, NH 03824.
 N.M. ALPHA (Eastern N.M.), 610 W. First, Portales, NM 88130.
 N.M. TAU (New Mexico), 1811 Mesa Vista, N.E. Albuquerque, NM 87106.
 N.M. PHI (N.M. State), NMSU Box 3550, University Park, NM 88001.
 N.Y. ALPHA (Cornell), Hillcrest, Ithaca, NY 14850.
 N.Y. DELTA (Syracuse), c/o Richard J. Hancock, 418 Elm St., Syracuse, NY 13203.
 N.Y. EPSILON (Rensselaer Tech), 12 Myrtle Ave., Troy, NY 12180.
 N.Y. RHO (St. Lawrence), 62 Park St., Canton, NY 13617.
 N.C. ALPHA (N.C. State), 2701 W. Fraternity Ct., Raleigh, NC 27606.
 N.C. THETA (Davidson), Box 33, Davidson, NC 28036.
 N.C. NU (Duke), Box 4713, Durham, NC 27706.
 N.C. XI (North Carolina), 112 Fraternity Ct., Chapel Hill, NC 27514.
 N.D. ALPHA (North Dakota), 306 Hamline St., Grand Forks, ND 58201.
 N.D. BETA (N.D. State), 1125 16th St., North Fargo, ND 58102.
 OHIO ALPHA (Youngstown), 850 Pennsylvania Ave., Youngstown, OH 44504.
 OHIO GAMMA (Ohio), 20 S. College St., Athens, OH 45701.
 OHIO DELTA (Ohio Wesleyan), 23 Williams Dr., Delaware, OH 43015.
 OHIO EPSILON (Cincinnati), 2707 Clifton Ave., Cincinnati, OH 45220.
 OHIO THETA (Ohio State), 1934 Indianola Ave., Columbus, OH 43201.
 OHIO KAPPA (Bowling Green State), Old Fraternity Row, Bowling Green, OH 43402.
 OHIO LAMBDA (Kent State), 222 University Dr., Kent, OH 44240.
 OHIO MU (Denison), SAE, Fraternity Row, Granville, OH 43023.
 OHIO NU (Toledo), 2007 Scottwood Ave., Toledo, OH 43620.
 OHIO RHO (Case Western Reserve), 11915 Carlton Rd., Cleveland, OH 44106.
 OHIO SIGMA (Mount Union), 1359 S. Union Ave., Alliance, OH 44601.
 OHIO TAU (Miami U.), 310 Tallawanda Rd., Oxford, OH 45056.
 OKLA. KAPPA (Oklahoma), 730 College, Norman, OK 73069.
 OKLA. MU (Okla. State), 1308 W. Third Ave., Stillwater, OK 74074.
 OKLA. TAU (Oklahoma City), 2418 N. Virginia Ave., Oklahoma City, OK 73106.
 ORE. ALPHA (Ore. State), 2929 Harrison St., Corvallis, OR 97330.
 ORE. BETA (Oregon), 812 E. 14th Ave., Eugene, OR 97401.
 ORE. GAMMA (Willamette), 900 State St., Salem, OR 97301.
 ORE. DELTA (Lewis & Clark), L&C Box 81, Portland, OR 97219.
 PA. ALPHA-ZETA (Pa. State), P.O. Box 949, State College, PA 16801.
 PA. GAMMA (Lafayette), College Sta. Box 4005, Easton, PA 18042.
 PA. DELTA (Gettysburg), 41 W. Lincoln Ave., Gettysburg, PA 17325.
 PA. EPSILON (Drexel), P.O. Box 7726, Philadelphia, PA 19101.
 PA. ZETA (Bucknell), Bucknell Box C2789, Lewisburg, PA 17837.
 PA. THETA (Pennsylvania), 3908 Spruce St., Philadelphia, PA 19104.
 PA. SIGMA-PHI (Dickinson), HUB 400, Carlisle, PA 17013.
 PA. PHI (Carnegie-Mellon), 1085 Morewood Ave., Pittsburgh, PA 15213.
 PA. CHI-OMICRON (Pittsburgh), 244 N. Bellefield Ave., Pittsburgh, PA 15213.
 PA. OMEGA (Allegheny), AC Box 50, Meadville, PA 16335.
 R.I. ALPHA (Rhode Island), 67 Upper College Rd., Kingston, RI 02881.
 S.C. GAMMA (Wofford), Box 161, Spartanburg, SC 29301.
 S.C. DELTA (South Carolina), Univ. Sta., Box 85112, Columbia, SC 29208.
 S.C. NU (Clemson), Box 2157, Univ. Station, Clemson, SC 29631.
 S.D. THETA (S.D. State), 705 11th Ave., Brookings, SD 57006.
 S.D. SIGMA (South Dakota), 1856 Madison Ave., Vermillion, SD 57069.
 TENN. ALPHA (East Tenn. State), 2810 W. Walnut, Johnson City, TN 37601.
 TENN. BETA (Middle Tenn. State), Box 549 MTSU, Murfreesboro, TN 37130.
 TENN. DELTA (Tenn. Tech), 328 N. Willow Ave., Cookeville, TN 38501.
 TENN. ZETA (Southwestern at Memphis), 2000 N. Parkway, Memphis, TN 38112.
 TENN. ETA (Union), Union Box 2073, Jackson, TN 38301.
 TENN. KAPPA (Tennessee), 1808 Fraternity Park Dr., Knoxville, TN 37916.
 TENN. NU (Vanderbilt), 2500 Kensington Pl., Nashville, TN 37212.
 TENN. SIGMA (Memphis State), 3601 Midland, Memphis, TN 38111.
 TENN. TAU (Tenn. at Martin), 528 Lee St., Martin, TN 38237.
 TENN. OMEGA (U. of the South), Box 1060, Sewanee, TN 37375.
 TEXAS ALPHA (Texas Tech), Box 4093 Tech Sta., Lubbock, TX 79409.
 TEXAS BETA (Texas Christian), TCU Box 29233, Ft. Worth, TX 76129.
 TEXAS GAMMA (Texas-El Paso), 444 E. Robinson, El Paso, TX 79902.
 TEXAS DELTA (Southern Methodist), 3105 Binkley, Dallas, TX 75205.
 TEXAS EPSILON (Houston), 3036 MacGregor, Houston, TX 77021.
 TEXAS RHO (Texas), 2414 Pearl St., Austin, TX 78705.
 UTAH UPSILON (Utah State), 809 N. 8th East, Logan, UT 84321.
 UTAH PHI (Utah), 1430 Federal Way, Salt Lake City, UT 84102.
 VT. BETA (Vermont), c/o Stephen J. Moreau, 184 S. Winsooki Ave., Burlington, VT 05401.
 VA. ALPHA (Randolph-Macon), Box 409, Ashland, VA 23005.
 VA. ZETA (Va. Polytech), 420 E. Roanoke St., Blacksburg, VA 24060.
 VA. OMICRON (Virginia), 1703 Grady Ave., Charlottesville, VA 22903.
 VA. SIGMA (Washington & Lee), 205 E. Washington St., Lexington, VA 24450.
 VA. TAU (Richmond), RC Box 68, Univ. of Richmond, VA 23173.
 VA. UPSILON (Hampden Sydney), Box 383, Hampden Sydney, VA 23943.
 WASH. ALPHA (Washington), 4506-17th St., N.E., Seattle, WA 98105.
 WASH. BETA (Wash. State), N.E. 865 B St., Pullman, WA 99163.
 WASH. GAMMA (Puget Sound), 3602 N. 14th St., Tacoma, WA 98406.
 WASH. CITY RHO (Geo. Washington), 2034 G St. N.W., Box 14, Washington, DC 20006.
 W.VA. ALPHA (Marshall), 1607-5th Ave., Huntington, WV 25703.
 W.VA. BETA (Bethany), Box 537, Bethany, WV 26032.
 WIS. ALPHA (Wisconsin), 627 N. Lake St., Madison, WI 53703.
 WIS. BETA (Ripon), c/o Ripon College, Ripon, WI 54971.
 WYO. ALPHA (Wyoming), Fraternity Park, Laramie, WY 82070.

Colonies

- Salisbury State Colony of SAE, Salisbury State College, Box 431 College Center, Salisbury, MD 21801.
 Davis and Elkins Colony of SAE, Box 454 Davis and Elkins College, Elkins, WV 26241.
 Indiana State-Evansville Colony of SAE, Indiana State University, U.C. Box 134, Evansville, IN 47712.
 Indiana of Pennsylvania Colony of SAE, 240 South 11th St., Indiana, PA 15701.
 Eastern Montana Colony of SAE, c/o Jim Eckenroad, Dir. of Residential Life, E.M.C., Billings, MT 59101.
 Baylor Colony of SAE, Box 135, Student Union Bldg., Waco, TX 76703.
 College of Charleston Colony of SAE, c/o SPO Box 2438 College of Charleston, Charleston, SC 29401.

chapter eternal

Stouffer V-P Dies

J. Fred Vollmer, Pennsylvania '23, former vice president of the Stouffer Restaurant Corporation, died recently.

Mr. Vollmer joined Stouffers in 1928 and retired in 1966. Since that time he had been active as a consultant and manager of the Philadelphia Phillies press club and executive dining room.

A past president of the Philadelphia Restaurant Association and National Restaurant Association, he also served on the Pennsylvania Minimum Wage Commission for restaurants.

J. Robert Covington, Davidson '29, of Charlotte, North Carolina, died October 5, 1977 in an automobile accident.

Following World War II, Mr. Covington joined WBT in Charlotte as promotion manager. Later he was promoted to assistant vice president and was named vice president in charge of sales in 1954. In 1956 he was elected vice president and managing director. Upon his retirement in 1973, he was vice president of the Jefferson-Pilot Broadcasting Company.

An active member of the Chamber of Commerce, he also served as a director of the Red Cross, Charlotte Advertising Club, Better Business Bureau, Family and Children's Service, N.C. Forestry Association, Charlotte Arts Fund, Charlotte Symphony Orchestra and the Merchants Association. In addition, he served as a member of the Davidson College Board of Visitors and as a class chairman of the Davidson Living Endowment.

John M. Mazola, MIT '66, died April 13, 1977 while participating in a racketball tournament. He was manager of the Architectural Development Department of the Computer Systems Group at Burroughs Corporation, Mission Viejo, California.

While at MIT, Mr. Mazola was captain of the basketball and baseball teams. He was the recipient of the Scott Paper Foundation Leadership Award as the outstanding junior engineering student and also received an NCAA Scholar-Athlete Award.

John M. McLaughlin, Jr., Pittsburgh '28, of Pittsburgh died May 9, 1977. A member of a large ΣAE family which included his father, brother and two nephews, he served as president of the Pittsburgh Alumni Association.

Mr. McLaughlin was the retired Principal of South High School in Pittsburgh and was a member of Phi Delta Kappa.

ARIZONA (Alpha)

Henry F. Wilky, '19, of Sun City, Arizona, on January 12, 1977.

ARKANSAS (Alpha-Upsilon)

Macomb Halpine, '26, of Largo, Florida, on May 19, 1977.

Roy Kuykendall, '24, of Minden, La., on March 7, 1977.

BARD (N.Y. Sigma-Phi)

Rev. Paul Hartzell, '15, of Lewisburg, Pa., on March 26, 1977.

BELOIT (Wis. Phi)

James O. Howe, '37, of Hammond, Indiana, on March 5, 1977.

Don W. Tracy, '16, of Minneapolis, Minn., on August 2, 1976.

BOSTON (Mass. Beta-Upsilon)

Fred F. McCann, '27, of Georges Mills, N.H., on February 13, 1977.

BOWLING GREEN STATE (Ohio Kappa)

Howard B. Rogge, '47, of Phoenix, Arizona, on April 14, 1977.

BUCKNELL (Pa. Zeta)

Lawrence M. Kimball, '23, of Vineland, N.J., on January 9, 1977.

CASE WESTERN RESERVE (Ohio Rho)

Robert R. Read, '35, of Akron, Ohio, on February 19, 1977.

CINCINNATI (Ohio Epsilon)

William F. Hopkins, '21, of Cincinnati, Ohio, on January 23, 1977.

COLORADO SCHOOL OF MINES (Lambda)

William B. Cramer, '38, of Stockton, Calif., on March 25, 1977.

Ramon F. Rhodes, '66, of Flatonia, Texas, on May 18, 1976.

COLORADO STATE (Delta)

John K. Bice, '34, of Arcadia, Calif., on January 20, 1977.

CUMBERLAND (Tenn. Lambda)

Willett M. Haight, '27, of Norman, Okla., on July 31, 1976.

DARTMOUTH (N.H. Alpha)

William Lies, Jr., '21, of Cuthbert, Georgia, on March 19, 1977.

DAVIDSON (N.C. Theta)

J. Robert Covington, '29, of Charlotte, N.C., on October 5, 1976.

Thomas M. Dunn, '40, of Laurinburg, N.C., on August 3, 1976.

DRAKE (Iowa Delta)

George H. Mart, '29, of Grinnell, Iowa, on February 16, 1977.

Fred G. Neu, '25, of Des Moines, Iowa, on March 28, 1977.

EMORY (Ga. Epsilon)

Frederick W. Lagerquist, Jr., '35, of Atlanta, Georgia, on February 13, 1977.

Edward B. Martin, '06, of Athens, Georgia, on January 15, 1977.

Ashton Therrel, '56, of Roswell, Georgia, on March 4, 1977.

GEORGIA (Beta)

Landon C. Dulaney, '19, of Atlanta, Georgia, on March 8, 1977.

James W. Woodruff, Jr., '38, of Columbus, Georgia, on October 17, 1976.

GETTYSBURG (Pa. Delta)

John U. Ehrhardt, '45, of Colt's Neck, N.J., on June 19, 1976.

Rev. Josaver W. Gentzler, '04, of York, Pa., on April 2, 1977.

James J. Roche, '30, at Raleigh, N.C., on November 6, 1976.

HARVARD (Mass. Gamma)

Judge Laval J. Leboeuf, '37, of Webster, Mass., on March 21, 1977.

INDIANA (Gamma)

Glenn A. Johnson, '22, of Memphis, Tenn., on March 25, 1977.

IOWA STATE (Gamma)

Wayne Dinsmore, Jr., '42, of Encino, Calif., on September 19, 1976.

Ed R. McChesney, '23, of Kenmore, N.Y., on March 30, 1977.

KANSAS (Alpha)

Frank E. Smith, '56, of Kansas City, Mo., on May 6, 1977.

KENTUCKY (Epsilon)

Howard L. Graham, '31, of Chicago Heights, Ill., on December 19, 1976.

James C. Lyne, '32, of Russellville, Ky., on November 4, 1976.

LAFAYETTE (Pa. Gamma)

Frederick E. Gerlock, '19, of Scranton, Pa., on August 9, 1976.

MARYLAND (Beta)

Mylo S. Downey, '27, of College Park, Md., in July, 1976.

M.I.T. (Iota-Tau)

John M. Mazola, '66, of Cambridge, Mass., on April 13, 1977.

MERCER (Ga. Psi)

J. Norwood Jones, Jr., '32, of Atlanta, Georgia, on March 31, 1977.

MILLIKIN (Ill. Delta)

J. Raymond Vertrees, '19, of St. Louis, Mo., on November 27, 1976.

Roger A. Yoder, '29, of Bloomfield Hills, Mich., on August 15, 1976.

MIAMI OF OHIO (Tau)

Gordon W. Pilot, '27, of Grosse Pointe, Mich., on January 6, 1977.

Dr. St. Clair A. Switzer, '28, of Sun City, Calif., on May 26, 1976.

MINNESOTA (Alpha)

Wilfred R. Knutson, '25, of Rochester, Minn., on January 6, 1977.

MONTANA (Beta)

Don R. Pay, '39, of Laguna Hills, Calif., on December 8, 1976.

MONTANA STATE (Alpha)

Warren G. Mowery, '27, of Seattle, Wash., on September 24, 1976.

MOUNT UNION (Ohio Sigma)

Willis W. Wells, '21, of St. Petersburg, Florida, on April 2, 1977.

NEW HAMPSHIRE (Beta)

Ernest W. Christensen, '20, of Bradenton, Florida, on May 7, 1977.

Rufus D. King, '29, of Manchester, N.H., on September 11, 1976.

John R. McCarthy, '52, of Lebanon, N.H., on February 11, 1977.

Cleveland Sleeper, Jr., '27, of Rockland, Maine, on August 19, 1976.

Charles W. Smith, '23, of Marion, Mass., on November 20, 1976.

NEW MEXICO STATE (Phi)

Charles W. Sanford, '54, of Santa Rosa, N.M., on September 10, 1976.

NORTH CAROLINA (Xi)

Clifford Davis, Jr., '46, of Garrett Park, Md., on February 25, 1977.

NORTH DAKOTA (Alpha)

Carl O. Lindquist, '27, of Scobey, Montana, on June 28, 1976.

NORTHWESTERN (III. Psi-Omega)

W. Bryant Currier, '20, of Springfield, Ohio, on January 3, 1977.

Earl W. Hupp, '20, of Boca Raton, Florida, on November 4, 1976.

OHIO (Gamma)

Donald R. Geaman, '53, of East Lyme, Conn., on January 18, 1977.

OHIO STATE (Theta)

Henry B. Lacey, '25, of Columbus, Ohio, on October 10, 1976.

OHIO WESLEYAN (Delta)

William E. McKee, '04, of Decatur, Illinois, on July 11, 1976.

OREGON (Beta)

Spencer R. Collins, '21, of Lake Oswego, Oregon, on March 16, 1977.

Paul L. Scott, '22, of San Francisco, Calif., on December 7, 1976.

OREGON STATE (Alpha)

Lorentz L. Allen, '26, of Nicasio, Calif., on February 26, 1977.

Larry D. McKennon, '59, of Albany, Oregon, on November 12, 1976.

John R. Peterson, '27, of Turlock, Calif., on July 6, 1976.

Paul M. Walker, '26, of Niguel, Calif., on January 28, 1977.

PENNSYLVANIA STATE (Alpha-Zeta)

Albert F. Mason, '15, of King of Prussia, Pa., on June 5, 1976.

PITTSBURGH (Pa. Chi-Omicron)

John M. McLaughlin, Jr., '28, of Pittsburgh, Pa., on May 9, 1977.

PURDUE (Ind. Beta)

John H. Todd, '34, of Burlington, Indiana, on March 19, 1977.

RHODE ISLAND (Alpha)

Angelo M. Gencarelli, '22, of Westerly, R.I., on February 23, 1977.

RICHMOND (Va. Tau)

Wayne C. Metcalf, '13, of Roanoke, Virginia, on August 14, 1976.

SAINT LAWRENCE (N.Y. Rho)

Stanford H. Waite, '31, of Watertown, N.Y., on March 25, 1977.

Lloyd D. Willcox, '29, of Johnstown, N.Y., on March 7, 1977.

SAN DIEGO STATE (Cal. Theta)

John R. Kelly, '52, of San Diego, Calif., on November 28, 1976.

SAN JOSE STATE (Cal. Zeta)

Boyd A. Bentrott, '52, of Seattle, Wash., on December 9, 1976.

SOUTH, UNIV. OF THE (Tenn. Omega)

Yetta G. Samford, III, '78, of Opelika, Alabama, on October 15, 1976.

SOUTH CAROLINA (Delta)

William L. Brigham, '32, of Greenville, S.C., on April 4, 1977.

SOUTHERN CALIFORNIA (Gamma)

Glen R. Baker, '37, of Laguna Hills, Calif., on August 23, 1976.

STANFORD (Cal. Alpha)

Frank M. Birbeck, '40, of Rio del Mar, Calif., on May 11, 1977.

SYRACUSE (N.Y. Delta)

Leonard A. Anderson, '27, of Hamburg, N.Y., on November 9, 1976.

Clifford C. Goes, '14, of Hackettstown, N.J., on April 11, 1977.

Leon B. Leggett, '21, of Bradenton, Florida, on April 16, 1977.

Frederick A. Ziegler, '61, of Flourtown, Pa., on July 28, 1976.

TEXAS (Rho)

Burt L. Brookshire, '77, of Lufkin, Texas, on August 15, 1976.

Bart Moore, '07, of San Antonio, Texas, on November 2, 1976.

M. Lawrence Parker, Jr., '37, of Bryan, Texas, on March 30, 1977.

TEXAS-EL PASO (Gamma)

Colin W. Flannigan, Jr., '67, of El Paso, Texas, on March 5, 1977.

TULANE (La. Tau-Upsilon)

Roby Spaar, '37, of New Orleans, La., on March 31, 1977.

UNION (Tenn. Eta)

Mervin B. Moore, '12, of El Paso, Texas, on March 27, 1977.

VANDERBILT (Tenn. Nu)

Graydon C. Sanders, Jr., of Needles, Calif., on April 17, 1977.

WASHINGTON AND LEE (Va. Sigma)

John P. Aylmer, '25, of San Antonio, Texas, on April 30, 1976.

Schuyler H. Floyd, '29, of Jacksonville, Florida, on August 21, 1976.

WASHINGTON STATE (Beta)

Larry J. McCabe, '55, of Portland, Oregon, on December 12, 1976.

Hans G. Nasburg, '14, of San Jose, Calif., on September 18, 1976.

Clarence V. Shriver, '20, of Spokane, Wash., on February 4, 1977.

WESTMINSTER (Mo. Gamma)

Jeffrey L. Genster, '78, of Denver, Colo., on December 4, 1976.

WILLIAM AND MARY (Va. Kappa)

Maurice R. Nance, '37, of Wynnwood, Pa., on December 24, 1976.

WISCONSIN (Alpha)

John A. Bancroft, Jr., '45, of San Diego, Calif., on January 30, 1977.

In Memoriam

Memorial gifts to The Levere Memorial Foundation are used to beautify and maintain The Levere Memorial Temple in Evanston, Ill., and to enlarge endowments for members' services such as student loans, tutorial assistance, libraries and others.

The Foundation and the Fraternity are grateful for the special contributions in remembrance of ΣAE Brothers and friends of ΣAE. Memorial contributions can be sent to Jack R. Hotaling, Secretary, The Levere Memorial Foundation, P.O. Box 1856, Evanston, Illinois 60204.

John Baugh by John Hilliard
John March
Willis Noland
L. K. Olmstead

Pierson Booth by Mrs. Pierson Booth (Wife)
Pierpont F. Brown by Jerald L. Watts
Harry D. Guthrie by Mrs. Harry D. Guthrie (Wife)
Mervin B. Moore by Mrs. Mervin B. Moore (Wife)
Rex A. Smith by Robert L. Cousins

John Hilliard
P. Bernard Jacob
William B. Jacob
Erskine M. Jeffords

Don W. Tracy by Don W. Tracy, Jr. (Son)

HOW SOLID IS THE BASE?

W. Charles Witzleben, Chairman, Development Committee

Since 1856, Sigma Alpha Epsilon has played an important role in shaping the lives of thousands of young men, and from time to time, has been presented with historic opportunities and challenges. These opportunities were often turning points in our illustrious history.

Sigma Alpha Epsilon is what it is today because men of vision and foresight met boldly and positively the opportunities of the past. Those responsible for the fraternity's beginnings and those who built—imaginatively and vigorously—on those foundations, have constructed for ΣAE a rich heritage.

What we are ten years hence will be determined by our response to today's challenges.

Sigma Alpha Epsilon is being challenged once again by demands both inside and outside the organization. The fraternity proposes to meet these demands without equivocation and respond to the pressures which are many and varied.

The fixed operating costs are considerable and rising every year. ΣAE is now and has in the past operated in the black, having realized in the last two years a modest surplus of income over expense. Based for the first time on a strict "zero base" or "program analysis" format, the Supreme Council presented to the 1977 National Convention a proposed budget for fiscal 1977-78 which calls for a surplus, though considerably smaller than that experienced in fiscal 1976-77 due to known increases in operating costs which are unavoidable.

To be sure, ΣAE is a strong and vibrant organization; however, there are signs on the horizon which indicate that the future might require some adjustments or extra effort in order to maintain our position of strength. Educational and demographic changes in this country will have some effect on the ability of ΣAE to recruit members, establish new chapters, and maintain our prominent position on campuses.

Population statistics in the United States indicate the success of the Zero Population Growth movement of several years ago. The population is reducing and the effect will be felt on college enrollments within the next five to seven years. In 1964 the 17 year old age group composed the largest portion of the population. The median age level is now increasing, however, and the age of the largest segment of the population is about 30 years old. It appears that there will be a steady decline in the "traditional" college age group of 17-21 years of age beginning around 1981. It is not necessary to point out that this "traditional" group is the primary group from which we draw our membership.

One other factor complicates the picture for the future. It has traditionally been true that about fifty percent of those young people in the college-age group attend college. This percentage has, however, been dropping at about one percent per year for the last five or six years. The combination of a declining percentage of students attending college in a numerically declining group will catch up with higher education soon—at least as far as "traditional" education goes. In fact, opening enrollments in 1976-77 declined .7%. Enrollment of men, more significantly, decreased 4%.

The point here is—there will be fewer college-aged young people in the population in the coming years and it appears that fewer of the group will attend college.

On most campuses the fraternity system comprises less than fifteen percent of the eligible male population. Unless the fraternity system increases its level of intrusion into the eligible population, then it is reasonable to assume our recognition level on the campus will decrease. On some campuses this will spell disaster for our chapter; on others we might find a strong but smaller group. At any rate, it will be difficult to increase the percentage level of fraternity membership on most campuses.

Another major concern about the future stems from the previ-

ous statements concerning potentially shrinking membership. This is the simple fact that seventy percent of the annual operating budget of the National Fraternity derives from pledging and initiation fees. Other sources of income must be sought to take the pressure off of the undergraduate income base or programs such as consultant advisement, leadership school, and others will be ended or reduced.

The Alumni Annual Giving Program has been the fraternity's salvation in generating unrestricted funds in support of the budget. Realizing the importance of a strong fund-raising program, the Supreme Council established a Development Committee in 1975 whose function continues to be that of an advisory committee for the fraternity's fund-raising activities. Five year comparative figures indicate continued growth for the annual giving program. Impressive as these figures are, there is the question of inflation, which causes the Supreme Council and National Staff so much anguish these days. We can all wonder and worry about whether annual giving is keeping pace with inflation. However, we should ponder the fate of ΣAE without this base of support. Devastation is too gentle a word to describe our future should these funds suddenly stop flowing.

The alumni movement and private philanthropy are truly unique to America, and annual giving is one of the most telling manifestations of this movement. Through annual giving, the fraternity has received an increasing flow of unrestricted dollars accompanied by a genuine spirit of concern on the part of alumni. It is largely through annual giving that ΣAE has been able to carry on many outstanding educational and leadership programs thereby maintaining her preeminence in the fraternity world.

Annual giving has had an important educational value for alumni. By now, the National Office and many of our chapters have seen the wisdom of keeping alumni informed about their mission and progress, because an informed alumnus is a more likely and thoughtful donor. The National Office attempts to coordinate its fund-raising activities with the chapters by keeping them informed of mailing dates. During the fiscal year 1977-78, alumni appeals will be mailed from Evanston on September 9, November 18, January 16, March 17, and May 15. The National Office does not wish to infringe on local chapter or alumni campaigns. There is enough evidence to show that an alumnus who has established a giving pattern with the National fraternity is likely to be more responsive to his collegiate chapter. If there exists a question of priority, it is suggested that the local chapter be the recipient of the alumni gift.

The future needs of Sigma Alpha Epsilon will not be met by annual giving alone, although an effective annual support program broadens the donor base necessary for the identification of estate, capital and planned giving prospects. Recommendations of the Development Committee and the recently adjourned National Convention call for a more aggressive fund-raising program to include regional telethons, planned, memorial, and capital gift programs. Increasing the percentage of alumni participation in the annual giving program is a top priority while the fraternity simultaneously intensifies its preparations to expand to other programs of support. This effort is equally essential to the long-term fiscal health and educational vitality of ΣAE.

As the number one national fraternity for the past 40 years, ΣAE is under an obligation to continue the leadership it has traditionally exercised in the fraternity world. It will continue in this role of leadership and, indeed flourish, as the base of alumni support grows in number.

** Dr. Richard L. Moore, Jr., Past Eminent Supreme Herald, contributed the information on declining college enrollments contained in this article.

PLEASE HELP US FIND THESE LOST MEMBERS

CALIFORNIA ETA— CALIF.—SANTA BARBARA

Redinger, Peter V., '74
Ames, George M., '53
Ballard, Robert D., '64
Bannon, John J., '62
Barnett Jr., Clyde L., '68
Beresford, Michael R., '65
Bowen, Edward H., '55
Brackeen, Patrick C., '63
Brownell, David A., '49
Callahan, Daniel W., '69
Canada, Richard A., '56
Chapman, John W., '61
Cobb, Charles M., '69
Crandall, Gary L., '60
Davis, James W., '60
Dennis, Walter E., '60
Gee, James S., '67
Hailey, John, '70
Hall, David N., '61
Hargis, Arnold, '49
Hembree, Rodger D., '64
Hollander, Rodney M., '66
Hon, Daniel, '57
Jansen, Boyce E., '64
Johanson, Noel E., '64
Kesson, Kenneth A., '53
Kluth Jr., Paul J., '51
Kraus, George W., '65
Lang, Franklin D., '55
Ludewig, William K., '63
Matraw Jr., Harold C., '63
McGee, Meredith D., '49
Miller, James W., '70
Mitchell, George T., '50
Morrow, Marcus J., '52
Newell, Kent H., '63
Ramey, Russell G., '66
Ritchie, Rodney F., '51
Robitaille, James H., '58
Scruggs, William P., '57
Sosa, Raul, '70
Starkey, Bill F., '51
Todd III, George, '68
Townsend, Chris B., '67
Vellekamp Jr., Henry, '57
Wages, Stephen E., '68
Warren, Michael O., '67
Warren, Tom, '60
Whitman, John W., '62
Wiebe, Karl H., '55
Wilcox, Richard K., '54
Williams, Joel J., '52
Williams, Joseph E., '55
Williams, Thomas M., '68
Woodruff, Jeffrey S., '65
Zolfaghari, Hedayat, '60

CALIFORNIA IOTA— CAL. ST.—FRESNO

Acker, Loren C., '55
Alvarez, John J., '73
Anderson, Frank W., '70
Armstrong, Frederic C., '56
Arthur, James F., '60
Baker, James R., '64
Banderas, Terry R., '62
Bartlett, Robert G., '66
Bartlett, Robert G., '66
Batten, Richard T., '73
Benefield, Raymond H., '61
Binger, Marlin E., '55
Bissett, Ralph I., '51
Blackburn, Dennis L., '56
Bledsoe, Stan R., '65
Blondeau, Jean M., '67
Boaz, Dennis L., '61
Bovetti, Kenn A., '66
Buckley, William R., '52
Burg, Fred A., '71
Campbell, Carl R., '64
Capriola, Peter T., '57
Cardinale, John J., '71
Cereghino, Raynold J., '66
Cooke, Jack L., '58
Cooper, Miles W., '61
Cunningham, Robert J., '60
Dahlinger, Fred C., '59
Davis, Robert W., '70
Dominici Jr., Julius C., '56
Dorman, Gerald L., '56
Douty, Douglas A., '68
Dowell, Bobby C., '62
Earle, Daniel C., '63

Earle, James H., '61
Emmert Jr., Wallace E., '69
Fisher, Douglass S., '69
Fletcher, Franklin D., '57
Flum, William H., '53
Frost, Robert A., '67
Gallaher, Myron L., '62
Ghormley, Peter B., '61
Golladay, Donald G., '57
Grauel, Richard L., '53
Greene, Stanton W., '52
Hanner, Delmar G., '50
Harkless, Richard M., '65
Harwood, Randall K., '69
Heffron, Glen M., '67
Hogrefe, Larry D., '57
Holt, Curtis R., '64
Horstmann, William F., '50
Hughes Jr., Julian Y., '62
Iida, Gary, '64
Jepsen, Kenneth M., '65
Johnson, Richard R., '51
Jones, Lance A., '57
Kelley, Michael J., '64
Kraft, Warren J., '50
Larson, Richard E., '61
Lindley Jr., Lester V., '58
Looper, Wade L., '59
MacDonald, David J., '67
MacKenzie, James D., '65
Mark, Lee J., '73
McCall, Monty W., '63
McFetridge Jr., Britton E., '63
McGee, Norman C., '62
Millard, William H., '71
Minugh, Hal R., '56
Mitchell, Russell, '56
Mosier, Fred A., '55
Myers, Richard L., '54
Nakamura, Gary H., '69
Niklaus, David C., '61
Nixon, Ralph E., '50
Noonan, Michael R., '70
Pallas, James R., '69
Palmer, James G., '56
Parr, Michael F., '65
Pelto, Wm. A., '50
Pereira, Melvin F., '64
Peters, Arnold W., '61
Pipal, Dennis R., '65
Pipkin, Vernon E., '70
Pollock, John H., '68
Pricola, Nick C., '65
Rathwick, Dirk L., '58
Reed, William J., '67
Robbins, Ronnie L., '66
Roberts, James G., '68
Schreiner, Richard A., '50
Slagle, Michael K., '62
Smith Jr., Frank L., '38
Sorensen, Harold R., '53
Sorrenti Jr., Fred H., '55
Spencer, William A., '58
Staley, Harold L., '67
Storey, Gary A., '57
Stubblefield, Dennis M., '59
Sullivan, James L., '55
Uriarte, Frank T., '63
Veinberg, John E., '70
Verutti, Charles D., '73
Waddell, Robert G., '69
Waller, Jeffrey J., '65
Wattenbarger Jr., William, '58
Weldon, H. Andrew, '75
Wiggins, William F., '63
Williams, Mark S., '72
Wilmot, Gerald A., '63
Wilson, Donald L., '59
Winter, Lester W., '58
Wood, Richard H., '64
Yanes, Arthur R., '53
Young, Jerald C., '65
Yruegui, Joe, '32
Zinkin, Dewayne, '65

CALIFORNIA LAMBDA— CAL. ST.—LONG BEACH

Anderson, Robert S., '71
Ashwill, Ellwin E., '57
Baker, Edward R., '56
Battaglia, Thomas J., '59
Beckett, Dudley A., '58
Beckwith, Jack, '59
Bellehumeur, Alexander R., '56
Bennett, John W., '75
Brown, Robert L., '65
Bryson, Richard W., '66
Burtle, James R., '64
Caldwell, John R., '58
Cameron, James E., '64
Childress, Gary A., '57
Clark, Michael K., '63
Clayton, Charles C., '61
Collin, Wilfred D., '60
Coombs, Philip H., '64
Corazza, Ronald B., '69
Cotter, Robert W., '56
Culbert, Daniel F., '65
Davis, Dennis C., '66
Davis, Donald L., '59
Davis, George W., '61
Davis, Richard M., '63
Dawson III, Harry V., '68
Dodd, Larry J., '59
Doornbos, Arthur D., '57
Empey, Harold C., '57
Freenor Jr., John M., '63
French Jr., John R., '62
Fuller, William S., '71
Gibbs, William E., '59
Giebler, Karl N., '62
Gill, Gregory C., '75
Gingher Jr., John R., '63
Graves, Marshall W., '69
Gritton, Roylin W., '70
Guthmann, Herbert J., '54
Handloser, Robert D., '65
Hansen, Rodney J., '64
Harrington, Gary A., '72
Hatfield, Robert L., '62
Haworth, Gary E., '67
Herrick, James G., '64
Hight, Richard C., '58
Hull, Larry V., '58
Jennings, Daniel C., '74
Jesse, Richard C., '74
Johnson, Frank C., '57
Johnson, Lee E., '60
Johnson, Rick M., '75
Johnson, Thomas E., '59
Johnson, Wallace M., '59
Joyce, Robert N., '69
Kiley, Patrick J., '53
Kirchner, Thomas L., '51
Lawson, Michael E., '66
Marsh, Dennis S., '67
Marshall, William J., '64
Martindale Jr., Lowell C., '63
Matthews, Ron D., '68
McAnern, David W., '58
McDonald, David L., '56

CALIFORNIA KAPPA— CALIF.—DAVIS

Bell, John A., '67
Blakey, Robert H., '70
Brown, Robert L., '65
Burnham, Robert E., '68
Edwards, Jack P., '67
Epler, Stephen M., '62
Frantz, Robert C., '63
Fry, Wesley M., '59
Ganzer, James E., '65

Greene, Duncan, '68
Harrison, Howard N., '55
Hoblit, David W., '72
Hosmer, Gordon J., '66
Houchin, Wallace H., '54
Johnson, Gene M., '56
Jones, Allan P., '65
Jones, Dixon D., '64
Kugler, Richard G., '71
Lamoureux, Donald M., '55
Manclark, William R., '54
McCampbell, William A., '68
McClish, Gale A., '53
Mets Jr., Richard K., '60
Murphy, Mark V., '68
Nissen, William R., '59
Northrop DDS, Ronald J., '69
Patterson, Timothy W., '64
Peterson, Dennis R., '71
Sirl, Michael W., '70
South, Richard G., '67
Stedman, Scott A., '66
Storz, Forrest E., '53
Swain, Donald G., '57
Tannahill Jr., James L., '76
Tortosa, Richard, '69
Vraciu, Robert A., '69
Webb, David M., '69
Wood, Terry N., '69

McDonald, Donald M., '62
Montgomery, Robt. D., '59
Neff Jr., Dennis S., '62
Neunuebel, Vincent T., '53
O'Brien, Robt. C., '60
Parker, William T., '66
Paulin, Donald E., '64
Penning, Don M., '58
Proctor, Henry G., '62
Raines, Richard W., '61
Reed, Richard L., '74
Russell, Robert L., '59
Schaefer, Terry A., '70
Sibaila, Gregory J., '59
Simmons, Randall C., '72
Smith, Swight T., '65
Strong, Edwin D., '56
Watkins Jr., Jack E., '56
Weismann, Paul M., '69
Williams, Donald R., '67
Wood, Howell D., '58
Woodridge, Brad G., '72

CALIFORNIA THETA— CAL. ST.—SAN DIEGO

Ackema, Dirk J., '76
Akridge Jr., Roy H., '57
Albini, John M., '75
Allen, Fred E., '54
Allen Jr., Harold J., '57
Allison, Gould, '54
Attebery, Jeffrey, '72
Azhderian, Alan, '70
Ballard, Thomas E., '62
Bane, Robert M., '62
Becker, Robert A., '62
Beldon, Ronald R., '61
Benbough Maj., Robert B., '58
Berry Jr., Benjamin H., '72
Bohan, Michael D., '71
Booster, Ralph J., '52
Brighton, Carleton C., '67
Brisbane, Dennis H., '63
Britton, Grant T., '63
Carlyle, James S., '58
Cash, Clarence D., '60
Chandler, Douglas H., '70
Chapman, Lewis M., '57
Christian, John H., '59
Clark, Darrell D., '58
Clark Jr., Eugene C., '49
Clavell, Jerry S., '55
Coble, Michael W., '72
Connor, Jack E., '58
Coziarz, Michael W., '67
Cringan, Gary A., '70
Crisci, Morris A., '66
Cunningham, Richard J., '71
Dale, Gordon A., '52
Deam Jr., Frank E., '52
De Beck, John E., '51
Douglas, Tommy L., '74
Edwards, Jerry K., '68
Elliott, David M., '31
Erwin, John D., '50
Evans, David N., '58
Evans, Stephen H., '60
Evarkiou, Stephen F., '63
Faris, Teran P., '62
Fleming II, Harvey C., '54
Fox, Thomas H., '49
Fuentes, John E., '57
Gable, William E., '71
Gale, Gary A., '69
Goltz, Gordy L., '72
Hanzal, Brian P., '52
Helsel, Ronald W., '64
Hemming, Gary H., '56
Hetzler, James R., '53
Hilton, James C., '59
Hoff Jr., Carl, '53
Hoole, Francis W., '60
Hysham, Charles J., '52
Kaiser, Frederick G., '71
Kemp, Scott P., '67
Kennedy, James W., '62
Kennedy, Roy T., '60
Kester, Frank L., '59
Ketchum, Edward N., '61
Knapp, Jack B., '57
Kostelecky, John R., '53
Kovacevich, Martin A., '64
Ladou, Joseph H., '60
Learned, David A., '61
Lee, Kenneth, '51

Long Jr., Robert L., '53
Mankins, Sam M., '58
Mann, Ralph O., '63
Manning Jr., Walter A., '67
Marsh, Ulad A., '52
Martin, Howard C., '54
Martin, John J., '60
Masterson, Alan B., '66
Matson Jr., Samuel I., '67
Mauro, Earnest P., '58
Maxted, Donald L., '64
McAnally, Donald B., '68
McCurdy, Gary R., '60
McDougal, Charles W., '53
McEnroe Jr., J. R., '64
McLeod, Roderick N., '56
McVey, Lee N., '63
Meek, Stephen H., '64
Mellison, Robert L., '52
Miley, Frederick L., '63
Montague, Jay L., '51
Morris, James E., '60
Mumby, Roger, '65
Myers, Arthur F., '57
Nason Jr., Frederick L., '42
Nelson, Darryl P., '64
Oldfield, Willard A., '57
Osburn, John E., '57
Owen, Bernard A., '64
Peacock Jr., Loney H., '58
Pearl, Frank O., '51
Perdomo, George, '56
Pisula Jr., John S., '70
Pittsford, Thomas L., '67
Place, Elon A., '63
Pompa Jr., Michael F., '69
Potter, Norman W., '64
Rader, Frederick A., '63
Reeder, Philip M., '59
Repaci, Louis E., '58
Riley, John B., '59
Riley, Robert L., '63
Ringsmuth, Don N., '67
Roberts, Glen R., '72
Robinson, Marshall P., '54
Rogers, John A., '55
Salvione, David M., '68
Sanders, Gerald R., '72
Saxton, James M., '65
Schuster Jr., John S., '58
Scoggins, Kim F., '69
Severance, Douglas S., '68
Sewell, Paul K., '49
Shipe, Stephen E., '71
Sivaco, Robert W., '71
Smith Jr., Frank M., '52
Smith, John H., '56
Smith, Richard F., '68
Stainaker, John H., '49
Steel, Charles R., '61
Stuard T. Ray, '52
Sullivan, John M., '71
Taylor, Barry C., '55
Taylor, Glenn D., '57
Tellep, Daniel M., '53
Tenney, Donald P., '62
Thomas, William E., '41
Thompson, Aubrey F., '37
Thompson, Claude L., '60
Townsend, Richard F., '68
Tucker, Gordon M., '65
Turner, Blake, '53
Turner, Joseph F., '58
Vance, Kenneth B., '43
Wakefield, Ronald R., '63
Walker III, Thomas J., '53
Walseth Jr., Harvey S., '66
Way Jr., Gerald J., '60
West, James T., '57
Wheeler, Donald D., '56
Williams, Charles A., '74
Willis, Andrew W., '62
Wilson, Donald E., '55
Wilson, Everett R., '52
Wilson, Jack W., '54
Winn, Richard E., '57
Winther, James I., '51
Wood, Carl R., '67
Wright, Gary S., '58
Young, Claude L., '65
Zane, Richard R., '63

**CALIFORNIA ZETA—
CAL. ST.—SAN JOSE**

Abascal, Ralph S., '56
Alford, Kenneth R., '54
Andersen, Barrett C., '53
Austin, James E., '53
Baer, Charles R., '51
Ball, Robert J., '69
Berggren, Loren D., '49
Bitterman, Ray T., '56
Botelho, Alvin J., '67
Boveri, Stephen J., '67
Brown, Leland G., '61
Buchser Jr., Herman R., '62
Bue, Marvin H., '57
Burnett, Robert T., '68
Burns, Kenneth D., '55
Carroll, Terry W., '56
Christiansen, Jeffery M., '64
Clifton, David R., '68
Cline, Patrick J., '66
Cowper, Lawrence T., '50
Crandall, Peter L., '58
Cryderman, Gary E., '71
Currier, Richard E., '64

Dawers, James B., '69
Didier, Urban J., '54
Donovan, Donald, '50
Dunbar, Charles E., '60
Dunn, James C., '56
Earl, Ronald F., '60
Eisenhower, Michael C., '64
Ellison, Edward T., '64
Ellsworth, John W., '48
Emmerling Jr., Frank C., '54
Everett Jr., Edward W., '50
Farias, Donald H., '53
Flamer, Stephen O., '66
Freeland, Philip H., '43
George, Richard E., '50
Goodman, Phillip, '67
Hamilton, Harlan L., '57
Hansen, Gary M., '65
Harlan, Robert W., '64
Harter, Steven P., '67
Hartman, Donald J., '43
Haut, Daniel H., '64
Hayes, Edward P., '55
Heidman, Richard L., '64
Helfrich Jr., William C., '63
Heskett, Bruce C., '65

Hill, James M., '64
Hinge, John E., '65
Hudson, Bill M., '55
Hughes, Emmett L., '61
Inveen, Daniel N., '52
Joyce, Michael E., '60
Judd, Frederick E., '50
Kahler, Richard M., '56
Kerr, James W., '52
Laster, Larry A., '63
Legras, Wallace D., '60
Little, Marvin L., '57
MacFadyen, Robert M., '49
MacQuarrie, Frank A., '68
McBain, John E., '51
McCray, Maynard W., '57
McCullough, Clayton M., '48
McGetchin, Robert E., '59
Milner, Calbert L., '55
Moorhead Jr., Earl A., '51
Morgan, Jack A., '58
Murray, Ian M., '58
Myers Jr., Harold W., '52
Newcomb, Bruce, '50
Norris, Jeffrey E., '74
Patterson, Jay R., '61

Perrone Jr., Leonard B., '62
Petrinovich, George P., '63
Pickard, Charles K., '69
Pierce, Robert C., '61
Pitsker, Cooper K., '47
Pitts, Frederick A., '55
Polifka, Karl L., '63
Rembert, Paul, '52
Ricci, Ronald R., '59
Rogers, Michael M., '65
Ross, Donald L., '46
Runyon, Robert R., '66
Rutherford, James M., '69
Saylor, Robert L., '49
Seal, Edward R., '50
Selby, Michael J., '67
Sheets, Kenneth W., '48
Sheldon, Robert M., '57
Short, Harry M., '59
Smith, Richard W., '57
Smith, William J., '50
Spalding, Robert S., '43
Springer, Larry D., '61
Stewart, James R., '51
Stinchfield, Donald J., '63
Tadlock, Terry G., '68

Thomas, Michael H., '50
Thompson, James B., '62
Threlfall, Donald R., '56
Timman, Paul D., '66
Timmons, Arthur L., '57
Turner, Dale A., '73
Van Cleave, Ira H., '52
Van Der Beets, James D., '56
Vogel Jr., Dale J., '66
Von Bergen, William A., '69
Walker, Douglas P., '55
Walston, Carl F., '61
Watkins, Wilbur L., '52
Watts Jr., George B., '56
Watts, Robert E., '68
Weiss, Robert P., '57
Westbrook Jr., James A., '67
Westman, Barry N., '60
Williams, James D., '60
Williamson, George H., '60
Wilson, Phillip O., '54
Wilson, Roger T., '65
Wright, Roderick M., '55

Continued from page 62

Sam H. Coon, Idaho '25; R., Oregon 2nd, 83-84 (1953-57).

Edward E. Cox, Mercer '02; D., Georgia 2nd, 69-82 (1925-52).

Clifford Davis, Mississippi '18; D., Tennessee 10th, 76-88 (1940-65).

James C. Davis, Emory '14; D., Georgia 5th, 80-87 (1947-63).

Cleveland Dear, L.S.U. '14; D., Louisiana 8th, 73-74 (1933-37).

Edward W. de Graffenried, Alabama '21; D., Alabama 6th, 81-82 (1949-53).

S. Hubert Dent, Jr., Birmingham-Southern '86; D., Alabama 2nd, 61-66 (1909-21).

George K. Denton, Ohio Wesleyan '91; D., Indiana 1st, 65 (1917-19).

Polite Elvins, Missouri '99; R., Missouri 13th, 61 (1909-11).

William Henry Fleming, Georgia 1875; D., Georgia 10th, 55-57 (1897-1903).

Henry D. Flood, Washington & Lee '86; D., Virginia 10th, 57-66 (1901-21).

James B. Frazier, Virginia '12; R., Tennessee 3rd, 81-87 (1949-63).

George W. Gordon, Nashville 1859; D., Tennessee 10th, 60-62 (1907-11).

Bill Gunter, Florida '56; D., Florida 5th, 93 (1973-75).

Oren Harris, Cumberland '30; D., Arkansas 7th, 77-89 (1941-66).

William A. Harris, George Washington 1859; Pop., Kansas At Large, 53 (1893-95).

Byron Patton "Pat" Harrison, L.S.U. '02; D., Mississippi 6th, 62-65 (1911-19).

George P. Harrison, Georgia Military 1861; D., Alabama 3rd, 53 (1894-97).

Arthur D. Healey, Dartmouth '12; D., Massachusetts 8th, 73-77 (1933-42).

Victor Heintz, Cincinnati '96; R., Ohio 2nd, 65 (1917-19).

Patrick Henry, Nashville 1862; D., Mississippi 7th, 55-56 (1897-1901).

Hugh Steel Hersman, Southwestern '90; D., California 8th, 66 (1919-21).

Joseph C. Hutcheson, Virginia 1866; D., Texas 1st, 53-54 (1893-97).

Hinton James, Davison '06; D., North Carolina 7th, 71 (1930-31).

Peterson B. "Pete" Jarman, Birmingham-Southern '12; D., Alabama 6th, 75-80 (1937-49).

Hamilton C. Jones, North Carolina '06; D., North Carolina 10th, 80-82 (1947-53).

Frank L. Kloeb, Ohio State '11; D., Ohio 4th, 73-75 (1933-37).

L. Q. C. Lamar, Mississippi 1866; D., Mississippi 1st, 35-36, 43-44 (1857-60, 1873-77).

John William Lawton, Virginia 1861; D., Virginia 2nd, 52 (1891-93).

Lawrence Lewis, Colorado '01; D., Colorado 1st, 73-78 (1933-43).

J. Carlton Loser, Cumberland '24; D., Tennessee 5th, 85-87 (1957-63).

John C. Mackie, Michigan State '42; D., Michigan 7th, 89 (1965-67).

William McKinley, Jr., Mount Union; R., Ohio 17th, 45-48, 49-51 (1877-84, 1885-91).

Clem R. McSpadden, Oklahoma State '48; D., Oklahoma 2nd, 93 (1973-75).

Harold B. McSween, L.S.U. '47; D., Louisiana 8th, 86-87 (1959-63).

Thomas B. Miller, Dickinson '12; R., Pennsylvania 12th, 77-78 (1942-45).

H. Erwin Mitchell, Georgia '45; D., Georgia 7th, 85-86 (1958-61).

James R. Mitchell, Cumberland '04; D., Tennessee 4th, 72-75 (1931-39).

Samuel J. Montgomery, Oklahoma '17; R., Oklahoma 1st, 69 (1925-27).

F. Bradford Morse, Boston '43; R., Massachusetts 5th, 87-92 (1961-73).

Thomas J. Murray, Union '14; D., Tennessee 8th, 78-89 (1943-67).

Gilbert B. Patterson, North Carolina '86; D., North Carolina 6th, 58-59 (1903-07).

Charles A. Plumley, Norwich '96; R., Vermont At Large, 73-81 (1934-51).

Norris Poulson, Oregon State '18; R., California 13th, 78, 80-83 (1943-45, 1947-53).

Robert D. Price, Oklahoma State '51; R., Texas 17th, 90-93 (1967-75).

William P. Price, North Georgia; D., Georgia 9th, 41-42 (1870-73).

David H. Pryor, Arkansas '56; D., Arkansas 4th, 89-92 (1966-73).

H. Heartsill Ragon, Washington & Lee '08; D., Arkansas 5th, 68-73 (1923-33).

Edward G. Rohrbough, Allegheny '00; R., West Virginia 3rd, 78, 80 (1943-45, 1947-49).

Jared Y. Sanders, Jr., L.S.U. '12; D., Louisiana 6th, 73-74, 77 (1934-37, 1941-43).

Byron N. Scott, Kansas '24; D., California 18th, 74-75 (1935-39).

Armistead Selden, Sewanee '42; D., Alabama 6th, 83-90 (1953-69).

George A. Shuford, North Carolina '17; D., North Carolina 12th, 83-85 (1953-59).

Albert G. Simms, Arkansas '03; R., New Mexico At Large, 71 (1929-31).

Hugo S. Sims, Jr., Wofford '42; D., South Carolina 2nd, 81 (1949-51).

Thomas U. Sisson, Southwestern '89; D., Mississippi 4th, 61-67 (1909-23).

George A. Smathers, Florida '36; D., Florida 4th, 80-81 (1947-51).

Augustus O. Stanley, South Kentucky '88; D., Kentucky 2nd, 58-63 (1903-15).

S. Walter Stauffer, Dickinson '12; R., Pennsylvania 19th, 83, 85 (1953-55, 1957-59).

William G. Stigler, Oklahoma '14; D., Oklahoma 2nd, 78-82 (1944-52).

J. William Stokes, Washington & Lee 1876; D., South Carolina 6th, 54, 55-57 (1895-96, 1896-1901).

Williamson S. Stuckey, Jr., Georgia '56; D., Georgia 8th, 90-94 (1967-77).

Oscar W. Swift, Michigan 1892; R., New York 9th, 64-65 (1915-19).

Millard E. Tydings, Maryland '10; D., Maryland 2nd, 68-69 (1923-27).

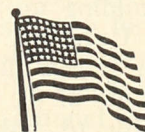
William N. Vaile, Colorado '01; R., Colorado 1st, 66-70 (1919-27).

Earl W. Vincent, Iowa '12; R., Iowa 9th, 70 (1928-29).

Thomas E. Watson, Mercer 1876; Pop., Georgia 10th, 52 (1891-93).

John A. Whitaker, Kentucky '25; D., Kentucky 2nd, 80-82 (1948-51).

William Lyne Wilson, George Washington 1860; D., West Virginia 2nd, 48-53 (1883-95).



WHEN WE CAME UP FROM DIXIE LAND

Edited by Joseph W. Walt

X

OUR WEDGE DRIVEN INTO COLORADO

NOW, IN MY senior year, I was to taste the joy of adding my first personal chapter to ΣAE's early northern galaxy and this in the far-off Rocky Mountains. A fine group of boys at the University of Colorado, leaders in all college activities and very popular socially, were organized entirely by correspondence from Clarksville in the midst of the school year 1891. George and I had gotten in touch with this opportunity through reading *The Rainbow*, the quarterly magazine of ΔΤΔ, in which the chapter correspondent from the University of Colorado bemoaned his chapter's fate at not having a second fraternity on the Boulder campus to keep them company. We knew how to fix that, all right, and I began correspondence with that Delta Tau man and offered a cure for their loneliness. He welcomed the suggestion and at my request recommended several prominent students who would be good leaders for organizing another chapter. He vouched for each of these boys as being good enough to be members of his own fraternity. I investigated this group by correspondence with the Chancellor of the University and found they stood high in every way. I began vigorous correspondence with Paul M. North as the leader of this coterie which included Harry L. McGinnis, Conrad Bluhm, Harry P. Layton and Alwyn C. Smith.

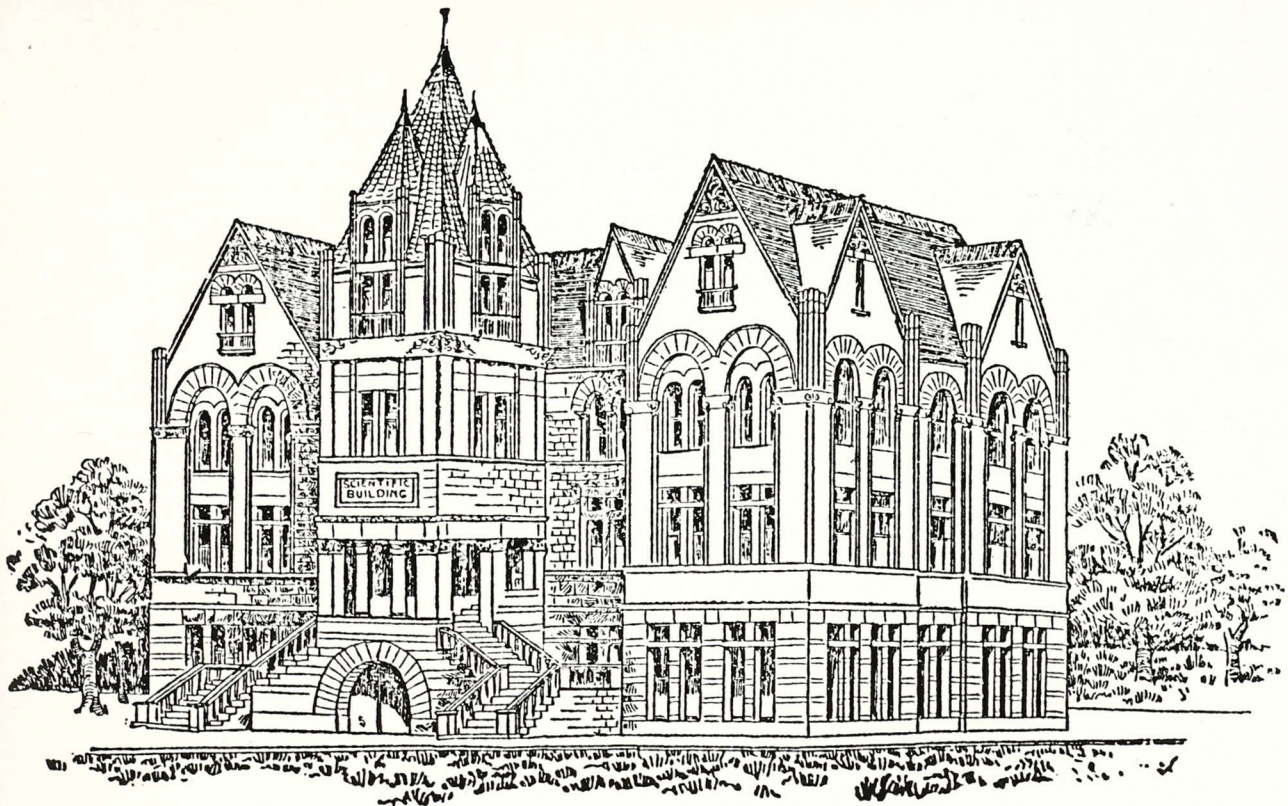
North and his friends responded enthusiastically to our proposals and promptly organized to become the first Rocky Mountain chapter of ΣAE. I had a very happy correspondence with these boys and in the course of a short time had them well instructed in the art of building up a chapter and taking front rank at their University.

With heavy college duties and extracurricular activities it was out of the question for me to get away from Clarksville to make the long journey to the Rocky Mountains to install this chapter. I got two Denver alumni, Frederick E. King and D. W. Spence, a Texas Rho initiate, who had been pals in Michigan Iota-Beta, to go over to Boulder about thirty miles

distant and conduct the initiatory ceremony. The chapter started off for immediate success and soon added enough new members to make it a strong, lusty organization. Additional members of that pioneer chapter were Charles A. Potter, E. A. Baldwin, Bethuel M. Webster, Edward C. Howe, Lewis Gaylord, Wellington Givins, James N. Hamill and George T. Sherman. Two years later, after I had left Atlanta, I visited this chapter for nearly a month as the guest of Paul North who lived in Boulder and was able to instruct the boys to my complete satisfaction in the art of chapter building. All the charter members were still in college. They initiated me into Colorado Chi to give me the dual status of "father-son" of the chapter, and I must say I learned some new things about initiations that night—particularly jumping on a board full of nails.¹

The members of Colorado Chi chapter were imbued with great ardor for the fraternity, Paul M. North developing early "fraternity consciousness" and becoming a national worker. This enthusiasm was helped on by a dray-load of fraternity Greek-letter "Exchange" magazines which I shipped to him from Clarksville, a heritage I had received from my editorial associations with Alexander Jefferson Smith and John G. Capers. These exchanges for several years had nourished the enthusiasm of Brother George Bunting and myself. The Colorado chapter was to derive equal benefit from them, although their news was now getting a little stale. Among these magazines was that very copy of ΔΤΔ's *Rainbow* which had invited us into Colorado.

The infant chapter at Boulder was set going from its inception on a quest of extension, and by November of that year we had installed our second far flung western chapter at the University of Denver, called Zeta in honor of my own chapter. Beta Theta Pi was already there. One of our charter members was George D. Kimball, destined to be a life-long worker for Minerva, Eminent Supreme Treasurer for many years, a successful Eminent Supreme Archon and a member of the Supreme Council for about thirty years, exceeding even Billy Levere in the length of his term



Science Building at the University of Colorado in 1891.

of continuous service of his fraternity in one capacity or another.² Sigma Alpha Epsilon went promptly to the front at both these Colorado institutions and has stayed there ever since. Paul M. North was to be taken by death early in life and Minerva was deprived of a most promising fraternity worker. He more than any other person put our fraternity on the map at Colorado.

I observe that our 1929 *General Catalogue* records Frederick E. King and Henry S. Murdock both as having been transfer members of Colorado Chi in its opening year. This is an error. Neither was ever matriculated at that institution. Murdock of Tennessee Eta was in attendance at Colorado College, Colorado Springs, and in the fall of 1891 he and I worked up a splendid group of boys which we proposed would form our third chapter in that state. This is an excellent Congregational institution with a socially high-class student body. Sigma Alpha Epsilon would have been the first to enter that college if the charter asked for had not been voted down by the slim margin of one or two votes at the Atlanta Convention of 1891.³

The reticence of some delegates of that convention over enrolling a third fine chapter in Colorado as part of our initial invasion of that state had no better foundation than that we had just granted several other charters—one to Stanford in California—and “enough was enough”! I knew that the decision was a sad mistake and as chairman of the Extension Committee at that convention had made an impassioned plea for this charter at our meeting which was held

in the Senate Chamber of Georgia. It was not to be. It was felt that we ought to make some gesture of self-restraint to show our innate “conservativeness”, so this sacrifice was ordered. Time has proven the un-wisdom of that decision. These fraternities went into that college in our stead and preempted the then open territory: ΚΣ, ΣΧ, ΦΓΔ, ΦΔΘ, ΒΘΠ, ΗΚΑ, and ΔΑΦ. Thus it came about that Colorado Springs failed to become a ΣΑΕ stronghold such as Denver was soon to be. We held the very first option on Colorado Springs and deliberately threw it away. It was a keen disappointment to me, for it means that Colorado today is only an 80 per cent stronghold for our fraternity, whereas it would have been fully 100 per cent ours for all time but for this singular lack of vision.

At times since I have seen charters granted that I questioned the wisdom of issuing. On other occasions when charters have been refused to excellent petitioning locals at such institutions as Brown University, Amherst, and University of West Virginia, I have deplored such acts as irremediable, stupid blunders. While reviewing both classes of questionable decisions I often indulged regret that we did not have a better way of issuing charters—such for example as trusting it to the wisdom of an expert Board of Strategy, instead of to the arbitrament of a largely uninformed popular vote at National Conventions.

Although this bright dream for the full conquest of Colorado in one whirlwind campaign was temporarily blocked, later workers were to add the two other state institutions in due season. The Colorado

School of Mines was entered twelve years later (1903) as the result of the work of George D. Kimball of the Denver Chapter and Walter E. White and William N. Vaile, of the Colorado Chapter, and the Lanagan brothers of Denver, James F. Lanagan, the elder brother, being an alumnus of our Stanford chapter, initiated in 1896, and famous as the Stanford football coach. William H. Lanagan was a student at the School of Mines. He helped organize the petitioners into a local, "The Lofters," who were chartered by the Washington Convention of 1902 when George Bunting served as chairman of the Extension Committee.

Colorado Agricultural College, a younger institution to develop, was chartered in 1917 as the result of the extension work of our Boulder and Denver chapters. Thus the original wedge driven into Colorado in 1891 found the job all but completed with the addition of the fourth lusty chapter, after twenty-six years.

But I continue to wish it were five chapters!

Notes:

¹ Roughhouse initiations were, alas, well rooted in fraternities by the time Bunting joined ΣΑΕ. Although he condemned barbarous "hell weeks" in later years, he seems not to have disapproved too much the relatively innocent horseplay in chapter initiations during his own day.

² George D. Kimball, Denver '95, did indeed serve longer in national office than any member of the fraternity in all time. His 36-year tenure of office included service as Eminent Supreme Deputy Archon, 1898-1900; Eminent Supreme Treasurer, 1901-1906 and 1911-1920; Eminent Supreme Archon, 1907-1910; and Eminent Supreme Warden, 1921-1934. He was more responsible than any other person for the founding of the National Interfraternity Conference in 1909. He died at Denver, Colo., July 8, 1936.

³ That Harry Bunting was dismayed by the refusal of the charter to Colorado College puts it mildly. According to opponents of the charter at the National Convention, ΣΑΕ did not need three chapters in Colorado and could easily forego chartering one in "such a remote small college which has little promise." An unfortunate prophecy that was dead wrong.

CONVENTION UP-DATE

The full National Convention story and photographs will appear in the November issue of *The Record*. There is not time, as this issue goes to press, to include much more than some of the significant highlights. We quote then just a few lines from "Round The Realm", a Friday official family newsletter from ESR Hotaling:

"This has been quite a dry spell for news but, of course, most of you were at the Convention and known first hand what happened there. However, a quick rundown would be that Lou Smith is our new ESA, Dick Generelly and Jim Peterson follow on the ladder, and Johnny Warren and Tom Kessler are our two new members. Duncan Low is Honorary ESA, charters were granted to the colonies at Salisbury State in Maryland and Baylor University in Texas, and the Rex A. Smith Efficiency Award was presented to California Alpha at Stanford.

"Russ Heuer conducted the meetings and the banquet magnificently and was assisted ably by Glen Nygreen as parliamentarian. We missed Leo and Virginia Cade; they had to cancel out at the last minute due to Virginia's illness, and Carl Simon was unable to give the opening invocation, also due to a sudden illness.

"There were too many changes to the National Laws to get into them all here except to indicate that the entire section on extension was rewritten and we are studying the way in which to bring about implementation. Very excellent reports were adopted from

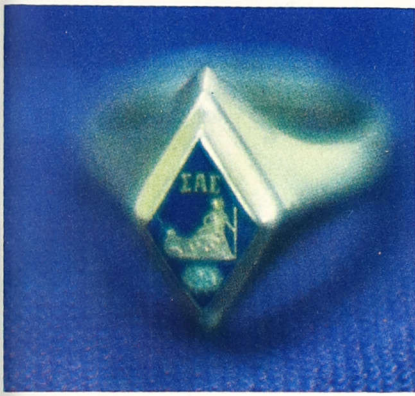
the Alumni Service/Annual Giving, the Chapter Services/Programming, and the National Publications committees; and all of their recommendations will also be implemented as quickly as practicable. The 1981 Convention will be in Kansas City.

"Lou Smith received a nice congratulatory letter from Iowa Governor Bob Ray and an Order of the Phoenix was presented to Skip Moore by Provincetown Upsilon."

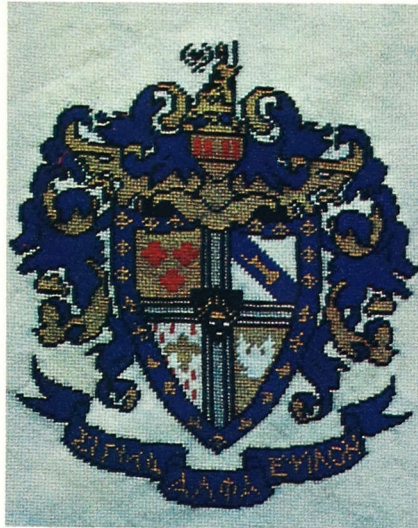
The Convention was opened on Sunday afternoon with an extraordinary well done slide and film presentation covering all areas of ΣΑΕ activity. It was prepared by Ken Tracey, Ray Artigue and Clint Smith of the National Office staff. During the introductions Russ introduced the three brothers in attendance who would receive the Distinguished Service Award at the Final Banquet. They were: David A. LaVine, Minnesota '48; William A. Unsworth, Indiana '30; and Robert P. van Blaricom, Ohio State '33. The Convention was welcomed by Fairbairn Gilkeson, Cornell '14 and the welcome was responded to by Russell P. Heuer, Sr., Pennsylvania '17.

Local Committee Chairman Fran Duffy, Pittsburgh '72, has sent along a special request that we include his thanks to everyone who worked so hard and so long to make this Convention a success. We are pleased to do so because it gives us an opportunity to express our appreciation to him and to his committee for making us all feel so welcome. All in all it was a truly productive and enjoyable Convention.

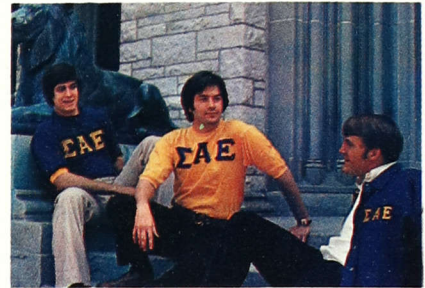
MERCHANDISE



SAE Ring \$60.00



Needlepoint Kit \$20.00



Jerseys \$7.00
Unlined Jackets \$11.00
Lined Jackets \$17.00



Matches \$4.00/100 boxes
Glasses \$1.50/50
Playing Cards \$2.50/deck
Nametags \$3.50/100

Merchandise Sales
Sigma Alpha Epsilon
P.O. Box 1856
Evanston, IL 60204

Unlined Jackets \$11.00
M L XL Navy Only

Matches \$4.00

Glasses \$1.50

Playing Cards \$2.50

Nametags \$3.50

SAE Ring \$60.00

Needlepoint Kit \$20.00

Jerseys — M L XL \$7.00
Navy Blue, Gold, Maroon

Lined Jackets \$17.00
M L XL Navy Only

Name

Address

Add 5% Sales Tax in Illinois

A great Chapter depends upon the involvement of its Brothers in the support of Chapter programs — whether it be community service or Founders' Day.

A great Fraternity depends upon the involvement of its Brothers in the support of Fraternity programs.

Sigma Alpha Epsilon Fraternity
Leadership Schools
Chapter Management
Alumni Programming
Chapter House Loans
Community Service

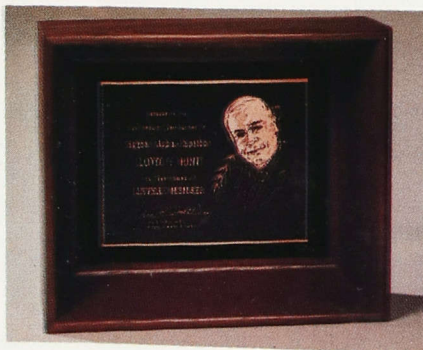
The Levere Memorial Foundation
Student Loans
Tutor-in-Residence
Chapter Library Program
Community Service Recognition
Scholarship and Career Planning

Every contribution furthers Fraternity and Foundation programs. With your gift, we will meet our goal. Support the Fraternity and the Foundation. Every one counts.



Founder Member

\$1000



Levere Member

\$500



Moseley Member

\$250

Your contribution accrues toward Founder, Levere, Moseley, and Century membership.

**EVERY
ONE
COUNTS**

Make checks payable to:
Sigma Alpha Epsilon
P.O. Box 1856
Evanston, IL 60204

The Record of Sigma Alpha Epsilon
P.O. Box 1856, Evanston, Ill. 60204
Postmaster: Please send notice of Undeliverable
copies on Form 3579 to above address.

Second class postage paid at Evanston, Ill.
and at additional mailing offices.