

the Record

OF SIGMA ALPHA EPSILON ■ FEBRUARY 1977 ■ VOLUME 97 ■ NUMBER 1



THE UNDERGRADUATE
EXPERIENCE



ESA Russell P. Heuer

a
message
from the
ESA

IN THE LAST issue of *The Record* our annual report was presented to you on the state of the fraternity. It included information on all aspects of Sigma Alpha Epsilon from the 42nd Leadership School, the joint Supreme Council/Province Archons meeting in August, our alumni organization, and most importantly, on the lifeblood of the fraternity: the chapters collegiate.

I call them the lifeblood of ΣAE for several reasons. They are where our alumni were first brought into the bonds. They are the groups who today actively seek to expose new brothers to the philosophy of our order. Lastly the chapters provide the focal point around which the activities of all of our other segments focus.

The alumni of Sigma Alpha Epsilon serve the chapter in many ways. They work through local alumni associations and house corporations, through the province officers and members of the Supreme Council. Many individuals with wide and varied talents have volunteered their time and efforts to help the 10,000 active undergraduate members of our fraternity. Those brothers donating their time as chapter advisors also play an important role in programming and activity at the chapter level.

The National Office is oriented to providing services, information and merchandise to alumni groups, but their primary aim is to advise the active chapters. The reorganization of the National Staff and the new position of Director of Programming are designed to this end.

Brothers of the chapter collegiate, all these people are here to help you, but they are not here to do your work. It is you who must take an active and intelligent role in order for the fraternity to survive. It is you who must take the initiative to further the aims of our brotherhood on your campus.

It can be done. Through the cooperation of alumni, advisors, the national and province officers and the collegiate members of Sigma Alpha Epsilon, we can improve. The marvelous work done at chapters such as California Zeta (San Jose State) and Oregon Delta (Lewis & Clark) need not be an end for the fraternity. Rather, they should be an example of what we have done, what we are doing and what must be done to keep Sigma Alpha Epsilon as the foremost collegiate fraternal organization in America today.

Russ Heuer

the Record

OF SIGMA ALPHA EPSILON ■ FEBRUARY 1977 ■ VOLUME 97 ■ NUMBER 1

From the Editor

Our readers will notice a slightly new format and type style in this first issue of *The Record* in a new volume. The new look is the work of indefatigable John March, Oklahoma '76, a first-rate graphic artist who has prodded your old, hide-bound traditionalist editor into accepting some of those new-fangled, modern ideas that young, bushy-tailed journalists keep coming up with. Mind you, we said *some* of those ideas, not *all* of them. We're still fairly conservative. And, you know, John March is kind of pushy.

Two new features are introduced with this issue. One is *The Record's* first Photoessay, a pleasant excursion into the life of a real, live Σ AE undergraduate in his native habitat. Our photographers for this project were able John Mitchell, Drake '78, and a talented Simpson $\text{AT}\Omega$ by the name of John Graber. The other new feature is the Σ AE-GRAM, a capsule summary of up-to-date news (good and bad) of the fraternity, the university world, and Greek-letter societies. We hope you will let us know if you like these new ideas.

Contents

The Undergraduate Experience: <i>The Record's</i> first photessay looks in on the life of Drake University junior David Arendt	2
The 1976 Σ AE All-American Football Team: A banner year for Minerva's sons on the gridiron	6
A program of Fulfillment: Summer interns helping others	9
On to Philadelphia in 1977: Σ AE's 121st Anniversary Convention to meet in the historic City of Brotherly Love	10
When We Came Up From Dixieland: The Σ AE memoirs of Harry Bunting, VII	26

Departments

Σ AE-GRAM: Last-minute flash news about Σ AE, the Greek world, and the campuses of the nation	11
Mini-Directory	12
Alumni Notes	14
Chapter News	19
Chapter Eternal	22
Lost Alumni File	24

PUBLISHED CONTINUOUSLY SINCE 1880

Joseph W. Walt, Editor

Barbara D. Searle, Editorial Assistant

CIRCULATION 75,000

Second class postage paid at Evanston, Ill., and at additional mailing offices.

Send address changes to P.O. Box 1856, Evanston, Ill. 60204.

Published quarterly by Sigma Alpha Epsilon, 1856 Sheridan Road, Evanston, Ill.

Notice of Change of address (Form 3579) should be sent to Sigma Alpha Epsilon, P.O. Box 1856, Evanston, Ill. 60204.

Printed by the George Banta Company, Menasha, Wis. 54952.



A RECORD PHOTOESSAY

The Undergraduate Experience

Meeet Dave Arendt. A junior at Drake University in Des Moines, he is a strapping 20-year old with an infectious smile and a strong predilection for partying, fraternity activity and girls, not necessarily in that order. He may not be the typical undergraduate ΣΑΕ member (if any one person *can* be "typical"), but he does possess many of the traits seen among college young people today.

Arendt enjoys people and gets on well with just about everybody. "I like to laugh and I enjoy seeing others laugh," he says of himself. On the Drake campus he is known as something of a "rah rah fraternity type," but he knows how to study, takes his academic work seriously, and has a cumulative gpa of 3.20 to show for it. He is majoring in management, with an eye toward banking or possibly law school.

The oldest of three brothers, he grew up in Montezuma, Ia., 70 miles east of Des Moines. In high school he played split end on the football team, ran cross country, played basketball, was a self-described "golf freak," beat a snare drum in the band, and went to the Methodist Church. His favorite high school subject was German. During his senior year he was president of the Iowa Federation of Students of German, made the National Honor Society with a 96 per cent

academic average, and won a freshman academic scholarship at Drake.

"Although I was a 'legacy' to another fraternity," recalls Arendt of his first days at Drake, "I pledged ΣΑΕ because of the guys. What impressed me in rush was their enthusiasm for the house."

At Iowa Delta he plunged into fraternity life with gusto. During his first two years he served as Community Projects chairman twice and ran a walk-athon that raised \$1,500 for Muscular Dystrophy. He was house manager for a semester and the chapter's social chairman while still a sophomore.

His ΣΑΕ brothers describe Arendt as "running around the place like a sort of unguided missile." Dave admits, "I don't like the sedentary life." He calls himself fairly conservative, straight—both senses of the term—lots of beer and no dope, and he likes girls. He hopes his future will see for him the fulfillment of the American dream: "I want to get married when I'm 24 or 25, go into banking or law, get rich, live in a fine house, drive a fine car, have kids and send them to college." He might even go back to Montezuma and take over the Peoples Savings Bank his grandfather founded and where he has worked the last seven summers and most vacations.



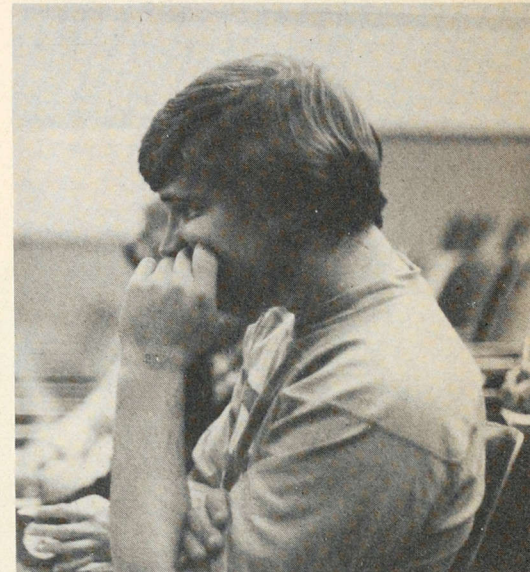
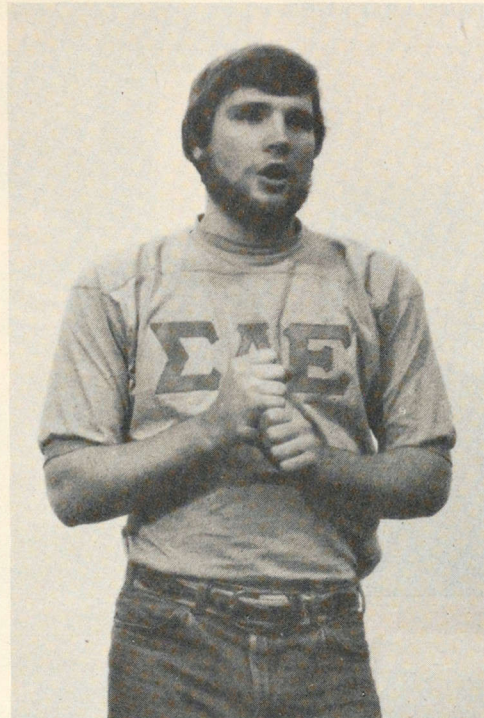
ARENDRT'S CLASSES ARE MOSTLY LECTURE . . .

BUT RAISE A HAND . . .

AND YOU CAN TALK BACK .

A CLASS IS A CLASS

Arendt likes his classes. Like an astonishing number of undergraduate ΣAEs, his major field of concentration is in the College of Business Administration. But unlike many of his brothers, he enrolls by choice in a number of tough humanities courses where a real premium is placed on verbal ability. This last fall he elected a course in philosophy (above) but probably most enjoyed his speech class (right). "I love to talk," he says, so the speech class is a real joy. "Talk, indeed!" laughs one of Dave's Iowa Delta brothers, "I daresay he's the biggest b.s.'er in the chapter!"



ABOVE: LISTENING TO ANOTHER STUDENT SPEAK IS NOT ALWAYS STIMULATING . . .

LEFT: BUT GIVING YOUR OWN SPEECH IS GREAT

PLEDGE SKIP

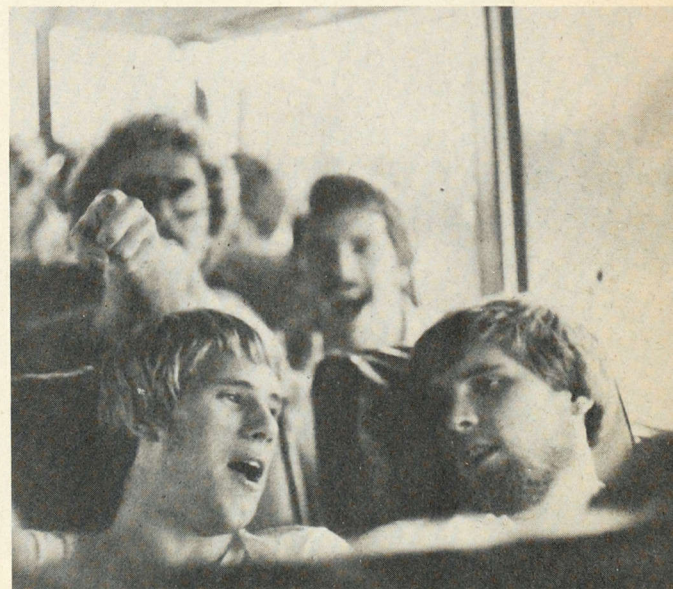
A hallowed tradition at Drake is the annual pledge skip. This year, after weeks of hush-hush prepara-

tion, the pledges took off by Greyhound for a weekend at Wisconsin Alpha at Madison, where they were handsomely received by ΣAEs. Custom dictates that an active member or two must be "kidnaped" and

taken along on the frolic. This year it was Arendt's turn (below). He put up a good struggle—that's part of the ritual—but his heart wasn't in it. He enjoyed the weekend as much as did the pledges.

PLEDGES JOHN RUNDQUIST AND ANDY SETTLER KIDNAP ARENDT

"LET'S SING THAT ONE AGAIN" ON PLEDGE BUS





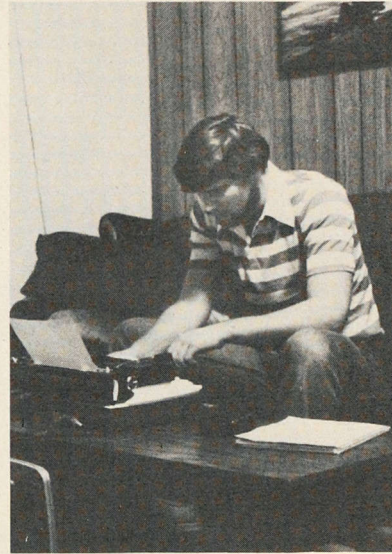
UP BEFORE 6 A.M. FIVE DAYS A WEEK



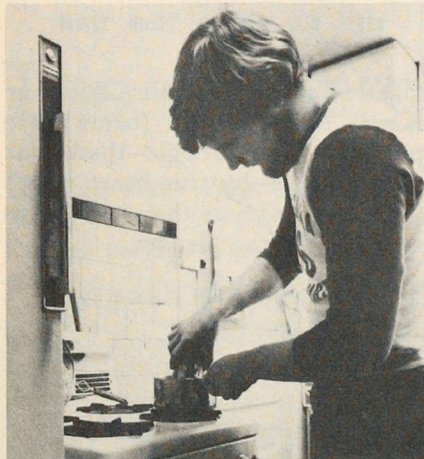
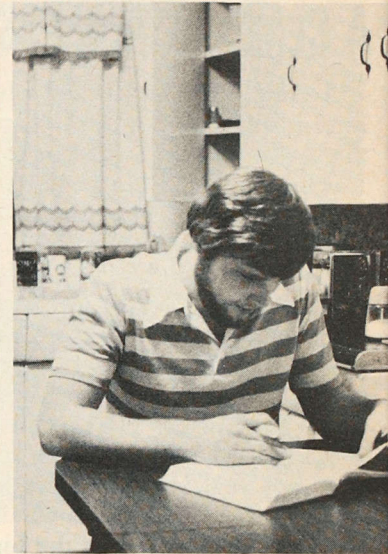
TWICE A DAY ARENDT DRIVES A SCHOOL BUS FULL OF SUPER-ACTIVE CHILDREN



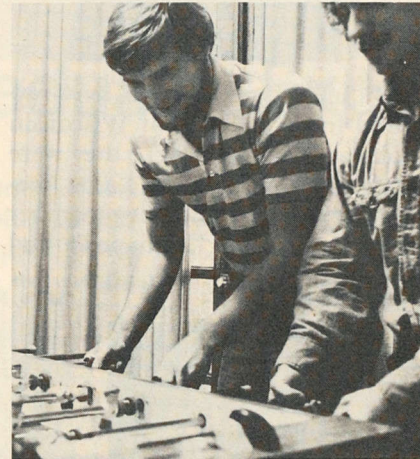
SOMETIMES HE EATS LUNCH AT THE HOUSE



AT THE APARTMENT YOU CAN STUDY ALL OVER THE PLACE



USUALLY LUNCH IS SOUP FROM A CAN



A LITTLE FOOSBALL WITH THE BROTHERS AT THE HOUSE

BELOW: NO DAY IS COMPLETE WITHOUT AT LEAST ONE BULL SESSION



NO DAY IS ROUTINE

It is almost impossible for a student to work his way through a private university like Drake where the total annual tab is nearly \$4,000. But Arendt helps by working at the bank at home during summers and vacations. In addition he, like seven other members of the Drake chapter, drives a school bus twice every day in near-by West Des Moines.

The ΣAE chapter house is an old converted residence, the pioneer Greek house on 34th Street, Drake's "fraternity row." Because the house is filled to overflowing, most of the chapter's more than 80 members live in dorms or apartments. Arendt shares a rambling first-floor apartment with two chapter members, Jim Noyce and Jeff Crawford. Living out of the house has not slowed Arendt's activity in the chapter, and he finds time to eat a meal or "recreate" at the house.



ST YOU MOVE IN . . .

AND TAKE FAST ACTION

PARTYING

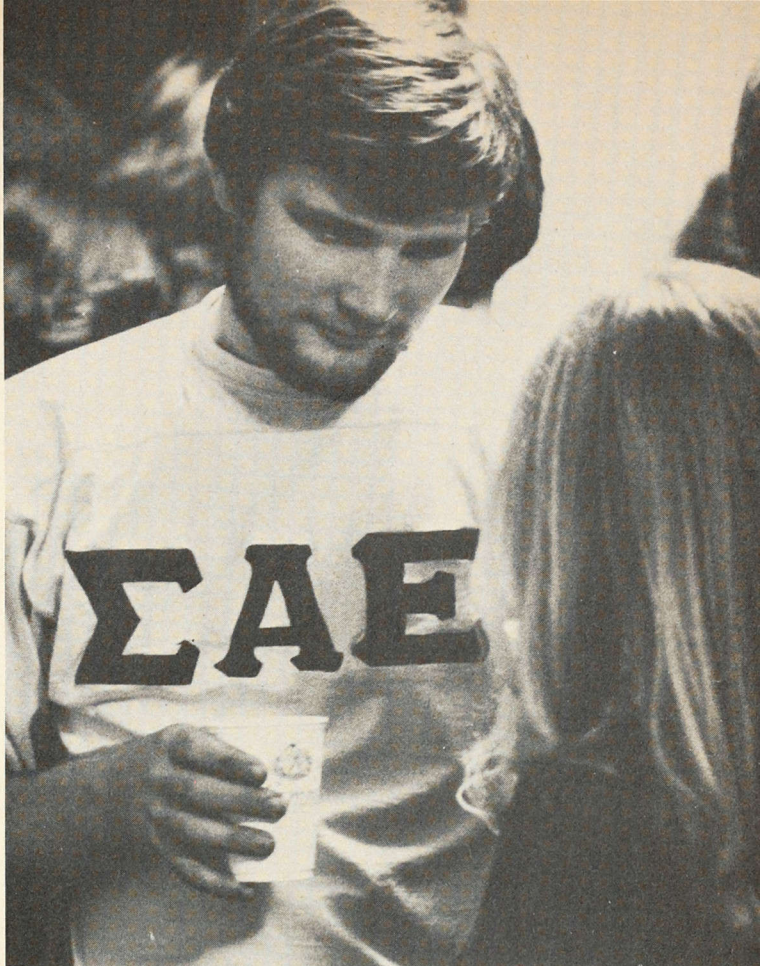
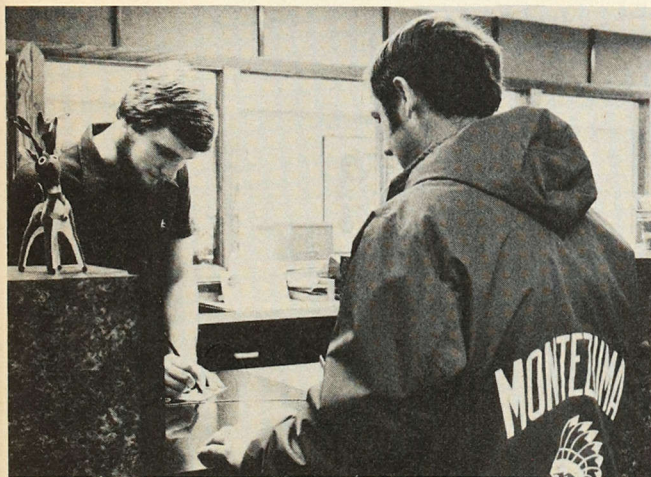
No one can keep Arendt away from a party, and no one tries. It is at informal house get-togethers—nearly everything is jeans-and-sweat-shirt informal nowadays—that Arendt's gregarious nature, quick wit, and incredibly rich store of bawdy songs mark him the quintessential 1977 ΣAE undergraduate.



AT HOME

At home Arendt puts in long hours at the bank (below). But home is not all work, for there are the joys of family life and a wet kiss from his big fuzzy pooch.

VACATIONS MEAN WORK IN DAD'S BANK AT HOME



BELOW: A GUY GETS A WEEKEND WELCOME FROM HIS DOG



ALL-AMERICAN

FOOTBALL

TEAM

Recently, the selection committee announced the members of the 1976 All-American football team. This year the selections were limited to major, rather than both major and small colleges. The team members were selected by: Donn R. Bernstein, Clemson '58 (S.C. Nu), ABC Collegiate Sports, New York City; Richard Harp, Kansas '40 (Alpha), Fellowship of Christian Athletes, Kansas City; Alden C. Hess, Lafayette '60 (Pa. Gamma), Mendham, N.J.; Bruce King, Oregon '58 (Beta), Sports Director for KOMO-TV, Seattle; Chuck Peterson, North Dakota '68 (Alpha), Sports Director of WDAZ-TV, Grand Forks, North Dakota; Ross Porter, Oklahoma '60 (Kappa), Los Angeles Dodger Announcer, Los Angeles; Jack Rushing, New Mexico '65 (Tau), New York City; and Ed Storin, Miami '51 (Florida Alpha), Executive Sports Editor, *Miami Herald*, Miami.

The second annual selections are dedicated to one of the finest college football coaches in the country. Glenn E. "Bo" Schembechler, Miami '51 (Ohio Tau) has been head coach of the Michigan Wolverines since 1969 and has entered several seasons with the finest regular season record of any active coach in college football.

Schembechler's teams have led the nation in scoring defense, and have placed high in defense against the

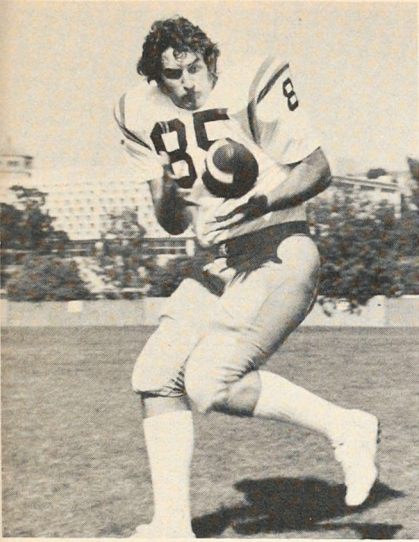
rush and overall defense. Also, over the last few seasons, Michigan teams have turned the ball over fewer times than any major college team.

After his graduation in 1951, Schembechler began his coaching career under Woody Hayes. Following receipt of his masters degree from Ohio State and a stint in the Army, he became line coach at Presbyterian College in 1954. He later served as coach at Bowling Green, line coach under Parseghian at Northwestern and in 1958, returned to Ohio State to serve as a line coach. Later he became coach at his alma mater, Miami, until he was tapped for the Michigan job in 1969.

Named as National Coach of the Year in 1969, Schembechler was later named Big Ten Coach of the Year in 1972. He had led his team to six Big Ten Championships and this year they won the chance to compete in the Rose Bowl on New Year's Day.

When the selections were made, photographs were not available for all players. The following are members of the team:

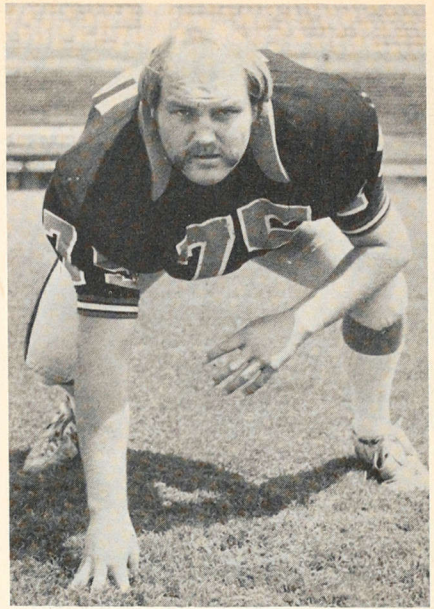
Defense: Joe Miller, Evansville '78 (Indiana Epsilon), tackle; Brad Marineau, Willamette '77 (Oregon Gamma), safety; Mike Leonard, Louisiana State '77 (Epsilon), safety; and Nick Mirkopoulous, Northwestern '79 (Illinois Psi-Omega), kicking specialist.



Don Pederson, UCLA '78 (Cal. Delta), End

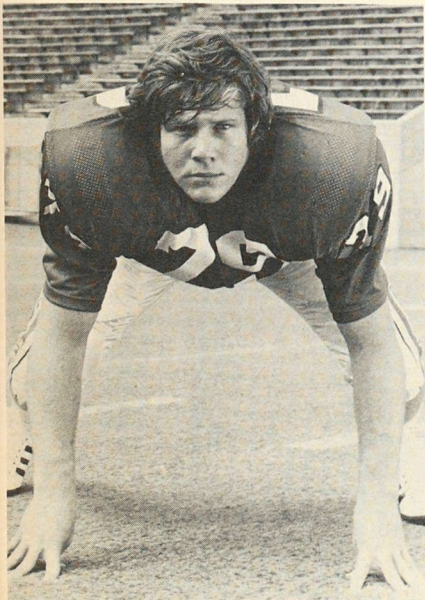


Tom Grant, Puget Sound '77 (Wash. Gamma), Tackle

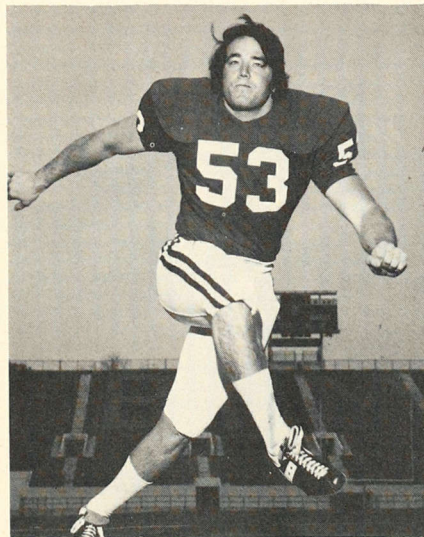


Fred Noe, Univ. of the Pacific '77 (Cal Rho), Tackle

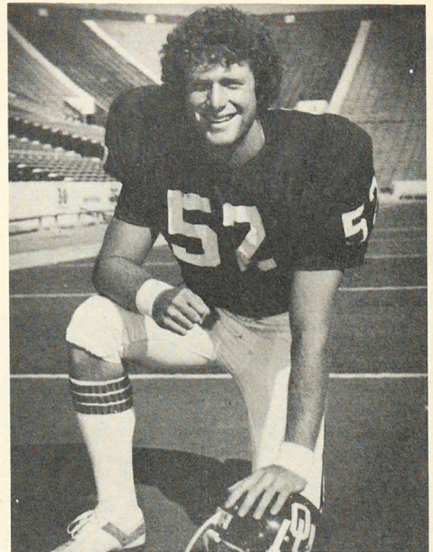
OFFENSE



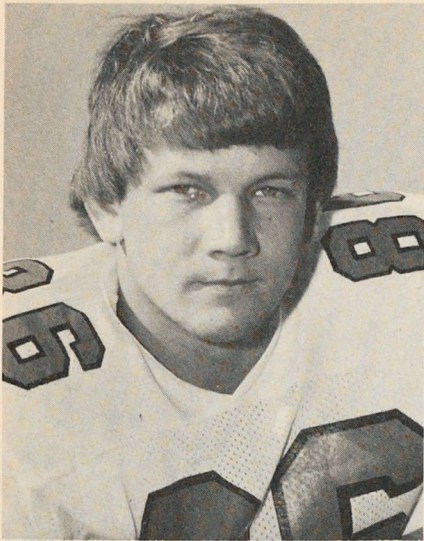
Joe Doggett, Indiana '77 (Gamma), Guard



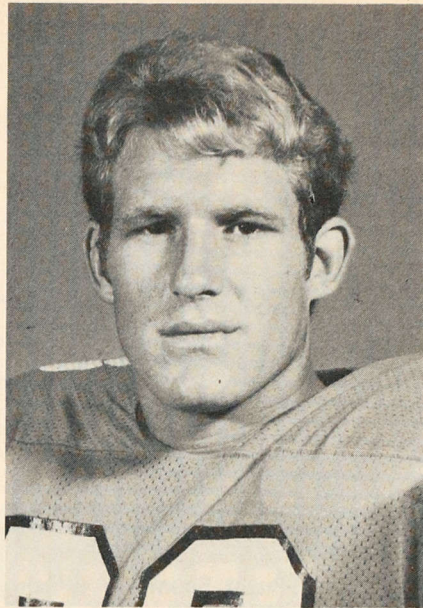
David McIntyre, Alabama '77 (Mu), Guard



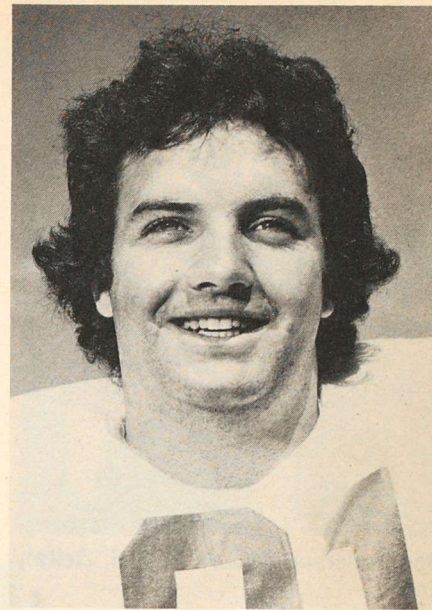
Kevin Craig, Oklahoma '75 (Kappa), Center



Ed Smith, Vanderbilt '79 (Tenn. Nu), End

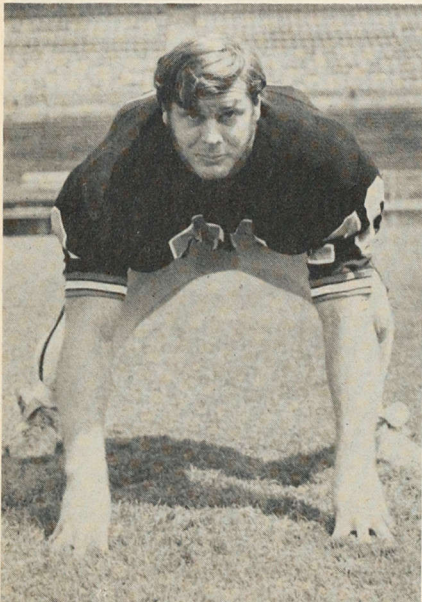


Mark Heniford, Clemson '78 (S.C. Gamma), End



George Stuart, Mississippi '75 (Gamma), Linebacker

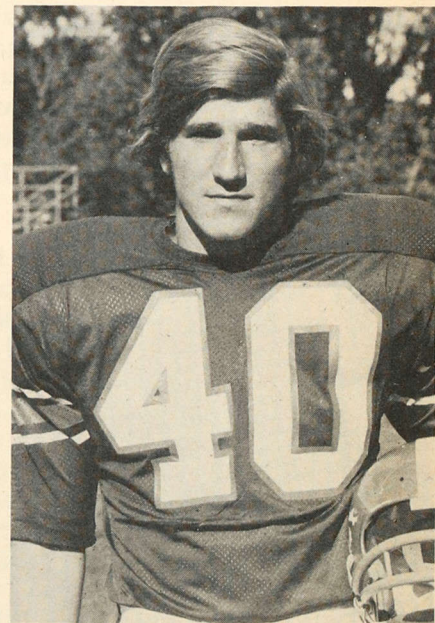
DEFENSE



Jim Whitehead, Univ. of the Pacific '77 (Cal Rho), Tackle

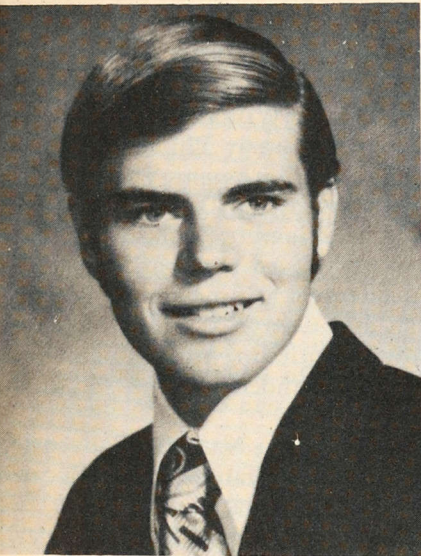


Greg Marshall, Oregon State '78 (Alpha), Linebacker



Paul Fuzak, St. Lawrence '77 (N.Y. Rho), Safety

A PROGRAM OF FULFILLMENT: Summer Interns Helping Others



Mark Prak

Mark Prak, a senior from Duke University, spent ten weeks last summer in Washington, D.C. doing research and writing for the *Boston Globe*. Prak, who lives in Glendora, California, says he found his Σ AE sponsored internship to be, "an invaluable experience. It was a great chance to get a peek at the press from the inside."

"My daily work load at *The Globe* varied greatly. I usually got my assignments by scanning the UPI daybook and choosing an event to cover. Events I covered included: press conferences, speeches, Senate Committee hearings, sessions of the Supreme Court, and reports of the Federal Elections Commission."

Prak would arrive each morning at the *Globe's* Washington desk to review other newspapers such as the *Washington Post*, *New York Times*, *Philadelphia Inquirer*, *Wall Street Journal*, *Baltimore Sun* and UPI wire reports. He would then decide on a story, cover it, and return to review his notes with his editor before writing the story.

From his central point in the Washington news flow, Prak gained

an understanding of the way the press operates from an inside perspective, and learned that "newspapers exist to make money first—inform the public second."

Two events acted as the highlights of Prak's summer, an unforgettable speech by his homestate Governor Jerry Brown at the National Press Club, and an exciting trip to the Democratic National Convention in New York.

Steve Wade

Steve Wade, a member of Tennessee Zeta from Southwestern at Memphis, participated in the Summer Intern Program as an intern law clerk with the Second Division Circuit Court of Pulaski County, Arkansas, in his hometown of Little Rock. He was supervised by the magistrate of the court, Judge Warren Wood.

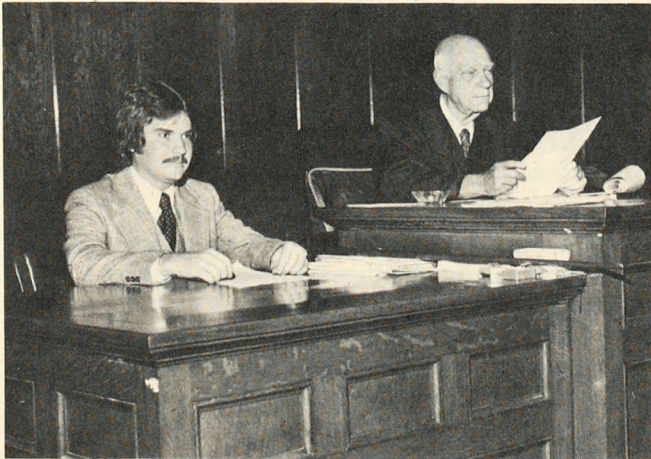
A senior hoping to attend law school, Wade did research in various legal documents and performed other duties with the court. He will incorporate his experience into a research paper for Southwestern's senior honors program in political science. During his internship, he learned from practical experience the various aspects of civil court procedures and says he acquired a degree of knowledge about them

that is completely unavailable to the undergraduate student through the traditional college class format.

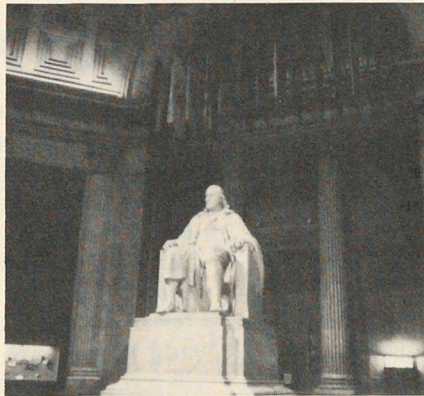
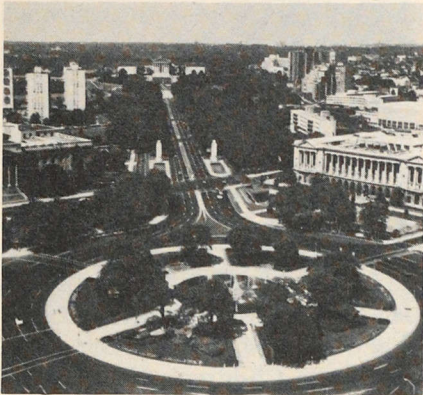
Five others served as interns in addition to Prak and Wade. Wayne Brinister (Miami) interned in Environmental Biology; Steve Ruggles (Massachusetts) in Commercial Banking Management; Joseph Earhart (Hampden-Sidney) in an Exploratory Analysis of Community Mental Health; and Michael Levinthal (Stanford) in Toy-Game Design for a Children's Hospital Administration.

1977 Goal

Funds have been secured to support ten interns this summer through the Σ AE Leadership Foundation. There is an attempt being made to raise enough additional funds to expand the program to 20 interns for the 1977 summer. Interns design their own programs and awards are made on the basis of creativity and academic value. The Σ AE Leadership Foundation provides the money needed for living expenses, cost of carrying out the project and other considerations. Write to Kenneth D. Tracey, Summer Intern Program Coordinator, P.O. Box 1856, Evanston, Illinois 60204 for further information and applications.



ON TO PHILADELPHIA IN 1977



When Sigma Alpha Epsilon meets in convention in Philadelphia June 18-22, 1977, the delegates will find a city quite different from William Penn's "Greene Countrie Towne." Today Philadelphia is a five county metropolis with over five million people.

Located ninety miles from New York City and one hundred and twenty miles from Washington, D.C., Philadelphia offers a sophisticated yet cosmopolitan atmosphere unequalled in the United States.

Modern day Philadelphia is a city of widely diverse commerce, industry and finance; and it is one of the known as a city of history. William Penn's "Grand Experiment" which granted early Philadelphians religious freedom and self-government was begun a century before the writing of the Declaration Of Independence in 1776. Benjamin Franklin, colonial America's foremost citizen, lived and worked here. In Philadelphia, independence was proclaimed, the Constitution was written and George Washington served as our first President. Twentieth century Philadelphia provides a vital and well rounded combination of the "olde" and the new.

The Bicentennial Celebration National Convention will be held at the Benjamin Franklin Hotel located in "America's most historic square mile." It is two blocks west of Independence National Historical Park. In the immediate vicinity are the Betsy Ross House, Elfreth's Alley, Old Christ Church and Head House Square. The Benjamin Franklin Hotel has 1,200 guest rooms, excellent dining facilities and an experienced and professional staff.

Visitors to the "City of Brotherly Love" will experience warm summer temperatures during the day and milder evenings. Summer weight clothing is suggested for the June convention.

Sigma Alpha Epsilon's Philadelphia Alumni Association has prepared an entertaining and educational program entitled "From Philadelphia to the Future."

We invite you to join the officers and delegates to the 121st Anniversary National Convention of Sigma Alpha Epsilon. We look forward with great pleasure to your visit to Philadelphia and the Benjamin Franklin Hotel this June.



ΣAE-GRAM

1856 Sheridan Rd.
Evanston, Ill. 60204

In this space we summarize and capsulize the latest, hottest news in SAE, the fraternity world, and on the campuses across the nation....

Fall pledging is up ten percent this year in SAE chapters. Reasons: fraternities are increasing in popularity in most parts of the country, and SAE chapters are working harder.... Less positive are reports of fall initiations, down nearly 200 from last year's. Are fewer being initiated? Probably not. Best guess is that chapters are delaying sending in initiation reports--and fees--past the required 30 day deadline. The \$5 fine for late reports doesn't deter many.

Best news at 1856 Sheridan Road is response to fall annual giving campaign. The response has been phenomenal. Only 6 weeks into the campaign the total collected exceeds 75% of last year's total giving. Campaign has already produced four new founder members of the LMF.

All SAE saddened by death of much-loved John Baugh, chapter visitation veteran whose time in service--1945 to 1973--set an SAE record, at his home in Meeker, Okla. Dec. 10. ESR Jack Hotaling and Past-ESA Leo Cade represented SAE at the funeral Dec. 11. Full details in next issue of The Record.

Dan McGowan, able Province Tau Archon, resigned Nov. 14 because of heavy business pressures. He is succeeded by Loren Boone, S.D. Theta '72, whose Province Tau Report is the best province newsletter ever published in history of SAE. ... Fire damaged Tenn. Nu house at Vanderbilt. No loss of life because of newly installed fire detection device. Such an alarm system is a good idea for all chapter houses.

In Evanston, chapter services director Ken Tracey announced his engagement to Pam Burkholder. Wedding is scheduled for April 30. Anything special here? Tracey makes four SAE national office staffers marrying Tri-Delts from little Simpson College in Iowa. What is it about those Tri-Delts??!!

Those who saw the Jerry Lewis Muscular Dystrophy telethon got to see SAE's Rick Kelley, Collegiate Council Chairman, present \$41,000 on behalf of those SAE chapters that had raised the funds.

Extension is on the upbeat. A new colony at Eastern Montana College brings colony total to three--the other two are at Salisbury State (Md.) and Davis & Elkins (W. Va.). Revivals are under way at Colorado and Syracuse, while Province Epsilon eyes Troy State (Ala.) for possible extension nod. SAE invited to colonize at American U. in nation's capital, and will investigate.

But no invitations out of Texas as result of huge Ft. Worth alumni bash raided by vice squad for gambling and prostitution. Big press coverage nationwide: "Fun Raisers Party is Over," etc. etc. Result: much embarrassment and humiliation for SAE everywhere. Reaction by fraternity dean at Baylor U. (where SAE much wants to revive its pre-Civil War Texas Theta chapter) was to fire off a letter to SAE Nat'l Hq. saying "in no way can SAE be brought to this campus." At press time the issue still simmers. Tough days for SAE in Texas.

Interfraternity scene: A bicentennial conclave at Williamsburg, Va., birthplace of Phi Beta Kappa in 1776, brought together representatives from all Greek-letter societies. Good productive sessions in a perfect setting. Many SAE's in attendance despite the fraternity's non-membership in NIC.

On campus: The big battle of the century is heating up between public and private colleges and universities as the publics go after more private money to beef up budgets, while the privates seek more \$\$ from state legislatures. At stake: the preservation of America's dual system of higher education.

directory

The Supreme Council

Eminent Supreme Archon: RUSSELL P. HEUER, JR., Pennsylvania '55 (Theta), 226 W. Rittenhouse Sq., Philadelphia, PA 19103.

Eminent Supreme Deputy Archon: DR. LOUIS E. SMITH, Drake '51 (Iowa Delta), 108 North J St., Indianola, IA 50125.

Eminent Supreme Warden: RICHARD F. GENERELLY, George Washington '47 (Wash. City Rho), 1700 K St. N.W., Washington, DC 20006.

Eminent Supreme Herald: DR. RICHARD L. MOORE, Texas-El Paso '66 (Gamma), 5613 South 111th St., Omaha, NE 68137.

Eminent Supreme Chronicler: JAMES D. PETERSON, Minnesota '57 (Alpha), 1750 Hennepin Ave., Minneapolis, MN 55403.

Collegiate Council Chairman: RICHARD H. KELLEY, Western Kentucky '76 (Beta), 713 McElroy, Bowling Green, KY 42101.

Honorary Eminent Supreme Archon

W. CRAWFORD McLAUGHLIN, Denver '19 (Colo. Zeta), 765 S. Clayton, Denver CO 80209.

The National Office

1856 Sheridan Rd., P.O. Box 1856, Evanston, IL 60204, Telephone: Area Code 312-475-1856.

Eminent Supreme Recorder: JACK R. HOTALING, Syracuse '53 (N.Y. Delta).

Director of Finance and Development: GEOFFREY C. WOIE, Minnesota '75 (Alpha).

Director of Programming: KENNETH D. TRACEY, Eastern N.M. '69 (N.M. Alpha).

Director of Extension: KARL E. WONDRAK, III, Northern Colorado '73 (Alpha).

Educational and Leadership Consultants: MICHAEL E. GARROLD, Allegheny '76 (Pa. Omega); JAMES P. HAMLIN, Northern Arizona '75 (Gamma); KEVIN M. NAGLE, Calif. State-Long Beach '76 (Lambda); TIM D. TOLAN, Oregon State '73 (Alpha).

Publications and Office Coordinator: BARBARA D. SEARLE.

Editor of *The Record*: DR. JOSEPH W. WALT, Tennessee '47 (Kappa), Simpson College, Indianola, IA 50125.

Living Past Eminent Supreme Archons

EMMETT B. MOORE, Mont. State '24 (Mont. Alpha), 1949-1951, 296 Circle Dr., Panorama City, Olympia, WA 98503.

DR. ROBERT R. AURNER, Iowa '20 (Iowa Beta), 1951-1953, P.O. Box 3434, Carmel, CA 93921.

DR. CHESTER D. LEE, Iowa State '27 (Iowa Gamma), 1953-1955, 111 Lynn Ave. #904, Ames, IA 50010.

LEO S. CADE, Oklahoma '22 (Okla. Kappa), 1957-1959, 402 W. Oklahoma, Anadarko, OK 73005.

HOWARD P. FALLS, Richmond '33 (Va. Tau), 1959-1961, 815-817 West Broad St., Richmond, VA 23220.

DR. GLEN T. NYGREEN, U. of Wash. '39 (Wash. Alpha), 1963-1965, 97 Highland Road, Scarsdale, NY 10584.

GURNETT STEINHAUER, Denver '31 (Colo. Zeta), 1965-1967, 3264 S. Oneida Way, Denver, CO 80224.

ROY L. MILLER, Drake '27 (Iowa Delta), 1967-1969, 621 41st St., Des Moines, IA 50312.

PAUL B. JACOB, JR., Miss. State '44 (Miss. Theta), 1969-71, Box 5252, Mississippi State, MS 39762.

ROBERT VAN BLARICOM, Ohio State '33 (Ohio Theta), 1971-1973, 527 Lodge Lane, Kalamazoo, MI 49009.

JOSEPH A. MANCINI, Cincinnati '35 (Ohio Epsilon), 1973-1975, 355 Valley Dr., Brisbane, CA 94005.

Board of Trustees

GEORGE T. ILSE, Syracuse '49 (N.Y. Delta), President (1979), 500 Fifth Ave., #1125, New York, NY 10036.

Extension Investigation Committee

ROY L. MILLER, Drake '27 (Iowa Delta), Chairman, 621-31st St., Des Moines, IA 50312.

Counsel for Fraternity

NORMAN H. PRITCHARD, Franklin '04 (Ind. Alpha), Vedder, Price, Kaufman & Kammholz, 115 S. LaSalle St., Chicago, IL 60603.

Committee on Chapter Housing

RICHARD F. GENERELLY, George Washington '47 (W.C. Rho), Chairman, 1700 K St., N.W., Washington, DC 20006.

Educational Advisor

GEORGE R. HAMRDLA, Stanford '60 (Calif. Alpha), Box 2683, Stanford, CA 94305.

Committee on National Laws

NORMAN H. PRITCHARD, Franklin '04 (Ind. Alpha), Chairman, Vedder, Price, Kaufman & Kammholz, 115 S. LaSalle St., Chicago, IL 60603.

Leadership School Planning Committee

THOMAS R. KESSLER, Kent State '61 (Ohio Lambda), Director, 43 East 10th #2D, New York, NY 10003.

Levere Memorial Temple Building Committee

WARREN E. GRIMSLEY, Western Michigan '31 (Mich. Delta), Chairman, 2747 Hurd Ave., Evanston, IL 60201.

Advisory Council of The Levere Memorial Foundation

NORMAN H. PRITCHARD, Franklin '04 (Ind. Alpha), (1981), Chairman, Vedder, Price, Kaufman & Kammholz, 115 S. LaSalle St., Chicago, IL 60603.

Levere Memorial Temple Chaplain

DR. ERSKINE M. JEFFORDS, Syracuse '18 (N.Y. Delta), 9517 Lincolnwood Drive, Evanston, IL 60203.

Artist of The Levere Memorial Temple

ERALDO CARUGATI, Simpson '41 (Iowa Sigma), 1567 Ridge Ave., Evanston, IL 60201.

25 Provinces and 186 Chapters

In corresponding with Chapters address letters "Eminent Archon," "Eminent Correspondent," etc.

Province Archons

ALPHA—GERALD J. ALLEYNE, 273 Chestnut St., Lynn, MA 01902.

BETA—O. TODD DICKINSON, 380 Jefferson Dr., Pittsburgh, PA 15228.

GAMMA—JAMES G. SAKERS, 4613 Calvert Rd., #10, College Park, MD 20740.

DELTA—RICHARD M. KIMBLER, 265 Empring St., Cincinnati, OH 45219.

EPSILON—W. CHARLES WITZLEBEN, 3064 Antler Trail, Marietta, GA 30062.

ZETA—JOHN F. MILLER, 6501 Highway 9, Parkville, MO 64152.

ETA—J. CLARKE HOUSTON, III, 715 Franklin St., Denver, CO 80218.

THETA—M. RONALD DOLEAC, 701 South 17th Ave., Hattiesburg, MS 39401.

IOTA—K. MARTIN HUFFMAN, 314 Tippet Ave., Morehead, KY 40351.

KAPPA—DANIEL CASTILLO, 2118 N. Garden, Fresno, CA 93703.

LAMBDA—PORTER P. UNDERWOOD, 10125 S.W. Old Orchard Ln., Portland, OR 97225.

MU—JOHN E. McCOY, 3387 MacArthur Rd., Decatur, IL 62526.

NU—WALTER B. BULL, JR., 750 Old Lancaster Rd., #409B, Berwyn, PA 19312.

NU-EPSILON—THOMAS M. L. GILLESPIE, 301 E. Heather Dr., Key Biscayne, FL 33149.

XI—(To be elected.)

OMICRON—DAVID A. COVERT, 2361 Camelia St., Cayce, SC 29033.

PI—RICHARD A. DANIELS, 4761 Dalebridge Rd., #E-4, Warrensville Hts., OH 44128.

RHO—RONALD F. EBNER, 506-18th Ave., So., Fargo, ND 58102.

SIGMA—JOHN K. MOTT, 2217 South W St., Ft. Smith, AR 72901.

TAU—LOREN J. BOONE, 502-8th Ave., Brookings, SD 57006.

UPSILON—CHARLES A. PINEDA, 2133 Calle de Sebastian, Santa Fe, NM 87501.

PHI—LARRY G. BREWER, 1120 Gerald, Missoula, MT 59801.

CHI—WALTER G. DEAGUERO, 626 N. Howard #15, Montebello, CA 90640.

PSI—DARRELL W. GIBSON, 604 W. Charles, Muncie, IN 47305.

OMEGA—JAMES H. LEFLAR, 16524 Trinity, Detroit, MI 48219.

The Chapters

ALA. ALPHA-MU (Auburn), 550 West Magnolia Ave., Auburn, AL 36830.

ALA. IOTA (Birmingham-Southern), BSC Box A53, Birmingham, AL 35204.

ALA. MU (Alabama), Box BF, University, AL 35486.

ALA. CHI (South Alabama), 275 Bayfront Dr., Mobile, AL 36605.

ARIZ. ALPHA (Arizona), 1509 E. 2nd St., Tucson, AZ 85719.

ARIZ. BETA (Ariz. State), 706 Alpha Dr., Tempe, AZ 85281.

ARIZ. GAMMA (Northern Ariz.), CU Box 7679, Flagstaff, AZ 86011.

ARK. ALPHA-UPSILON (Arkansas), 110 Stadium Dr., Fayetteville, AR 72701.

ARK. BETA (Arkansas-Little Rock), 3122 S. Taylor, Little Rock, AR 72204.

CALIF. ALPHA (Stanford), P.O. Box 6507, Stanford, CA 94305.

CALIF. BETA (Calif.-Berkeley), 2722 Bancroft Way, Berkeley, CA 94704.

CALIF. GAMMA (U.S.C.), 833 W. 28th St., Los Angeles, CA 90007.

CALIF. DELTA (U.C.L.A.), 655 Gayley, Los Angeles, CA 90024.

CALIF. EPSILON (Occidental), 4909 Rangeview Ave., Los Angeles, CA 90042.

CALIF. ZETA (San Jose State), 296 South 10th St., San Jose, CA 95112.

CALIF. ETA (Calif.-Santa Barbara), 6553 Cordoba, Goleta, CA 93017.

CALIF. THETA (San Diego State), 5076 College Pl., San Diego, CA 92115.

CALIF. IOTA (Calif. State-Fresno), 1469 E. Joyal Dr., Fresno, CA 93710.

CALIF. KAPPA (Calif.-Davis), 521 Russell Blvd., Davis, CA 95616.

CALIF. LAMBDA (Calif. State-Long Beach), 4041 E. 4th St., Long Beach, CA 90814.

CALIF. MU (Calif. State-Los Angeles), c/o Univ. Union, 5151 State Univ. Dr., Los Angeles, CA 90032.

CALIF. NU (Calif. State-Northridge), 17806 Plummer St., Northridge, CA 91324.

CALIF. XI (Calif. State-Sacramento), 790 Fulton Ave., Sacramento, CA 95825.

CALIF. PI (Calif. State-Fullerton), 2101 Teri Pl., Fullerton, CA 92631.

CALIF. RHO (Univ. of Pacific), 819 Fraternity Cir., Stockton, CA 95211.

CALIF. SIGMA (San Francisco), 2130 Fulton St., San Francisco, CA 94118.

COLO. ALPHA (Northern Colo.), 814 19th St., Greelev. CO 80631.

COLO. DELTA (Colo. State), 306 W. Laurel St., Fort Collins, CO 80521.

COLO. ZETA (Denver), 2050 S. Gaylord St., Denver, CO 80210.

COLO. LAMBDA (School of Mines), P.O. Box 472, Golden, CO 80401.

COLO. CHI (Colorado), c/o Richard Cunningham, 880 Orman Dr., Boulder, CO 80302.

FLA. ALPHA (Miami), 5850 San Amaro Dr., Coral Gables, FL 33146.

- FLA. BETA (Fla. State), FSU Box 6697, Tallahassee, FL 32306.
- FLA. GAMMA (Fla. Southern), FSC Box 4758, Lakeland, FL 33802.
- FLA. DELTA (South Fla.), Univ. Center Box 2366, Univ. of So. Fla., Tampa, FL 33620.
- FLA. EPSILON (Fla. Tech.), P.O. Box 26293, Orlando, FL 32816.
- FLA. SIGMA (West Fla.), 1775 E. 9 Mile Rd., Pensacola, FL 32504.
- FLA. UPSILON (Florida), 2 Fraternity Row, Gainesville, FL 32603.
- GA. BETA (Georgia), 247 Pulaski St., Athens, GA 30601.
- GA. EPSILON (Emory), Emory Drawer Z, Atlanta GA 30322.
- GA. ETA (Oglethorpe), 3683 Peachtree Rd., N.E., Atlanta, GA 30319.
- GA. SIGMA (Valdosta State), 1605 N. Patterson St., Valdosta, GA 31601.
- GA. PHI (Georgia Tech), 221 4th St., N.W., Atlanta, GA 30313.
- GA. PSI (Mercer), Mercer Box 94, Macon, GA 31207.
- IDAHO ALPHA (Idaho), 920 Deakin St., Moscow, ID 83843.
- ILL. ALPHA (Monmouth), 923 E. Euclid, Monmouth, IL 61462.
- ILL. BETA (Illinois), 211 E. Daniel St., Champaign, IL 61820.
- ILL. GAMMA (Northern Ill.), 917 Greenbrier Rd., DeKalb, IL 60115.
- ILL. DELTA (Millikin), 1165 W. Main St., Decatur, IL 62522.
- ILL. EPSILON (Bradley), 1311 W. Barker, Peoria, IL 61606.
- ILL. PSI-OMEGA (Northwestern), 2341 Sheridan Rd., Evanston, IL 60201.
- IND. ALPHA (Franklin), 800 E. Monroe St., Franklin, IN 46131.
- IND. BETA (Purdue), 406 Littleton St., W. Lafayette, IN 47906.
- IND. GAMMA (Indiana), 1115 N. Jordan, Bloomington, IN 47401.
- IND. DELTA (DePauw), 509 S. Locust St., Greencastle, IN 46135.
- IND. EPSILON (Evansville), 1723 Lincoln Ave., Evansville, IN 47701.
- IND. ZETA (Ball State), 525 Riverside Ave., Muncie, IN 47303.
- IND. SIGMA (Ind. State), 1320 S. Sixth St., Terre Haute, IN 47802.
- IOWA BETA (Iowa), 932 College, Iowa City, IA 52240.
- IOWA GAMMA (Iowa State), 140 Lynn Ave., Ames, IA 50010.
- IOWA DELTA (Drake), 1235 34th St., Des Moines, IA 50311.
- IOWA SIGMA (Simpson), 705 North E St., Indianola, IA 50125.
- IOWA CHI (Northern Iowa), 1113 W. 23rd St., Cedar Falls, IA 50613.
- KANS. ALPHA (Kansas), 1301 W. Campus Rd., Lawrence, KS 66044.
- KANS. BETA (Kansas State), 1015 N. Denison, Manhattan, KS 66502.
- KANS. GAMMA (Wichita State), 1714 N. Fairmont, Apt. 10, Wichita, KS 67208.
- KY. BETA (Western Ky.), 1351 College St., Bowling Green, KY 42101.
- KY. GAMMA (Morehead State), Morehead Box 1265, Morehead, KY 40351.
- KY. DELTA (Eastern Ky.), EKU Coates Bldg., Box 377, Richmond, KY 40475.
- KY. EPSILON (Kentucky), 410 Rose Ln., Lexington, KY 40508.
- KY. KAPPA (Centre College), Box 738X, Danville, KY 40422.
- LA. ALPHA (Southwestern La.), 1021 Johnston, Lafayette, LA 70501.
- LA. EPSILON (La. State), Box EP, Baton Rouge, LA 70803.
- LA. TAU-UPSILON (Tulane), 1200 Broadway, New Orleans, LA 70118.
- MAINE ALPHA (Maine), 117 College Ave., Orono, ME 04473.
- MD. BETA (Maryland), 4 Fraternity Row, College Park, MD 20742.
- MASS. BETA-UPSILON (Boston), 29 Pratt, Allston, MA 02134.
- MASS. GAMMA (Harvard), 85 Putnam Ave., Cambridge, MA 02138.
- MASS. DELTA (Worcester Tech), 6 Humboldt Ave., Worcester, MA 01609.
- MASS. IOTA-TAU (M.I.T.), 484 Beacon St., Boston, MA 02115.
- MASS. KAPPA (Massachusetts), 118 Sunset Ave., Amherst, MA 01002.
- MICH. ALPHA (Adrian), 1108 Michigan Ave., Adrian, MI 49221.
- MICH. GAMMA (Mich. State), 4950 S. Hagedorn, E. Lansing, MI 48823.
- MICH. DELTA (Western Mich.), 919 Short Rd., Kalamazoo, MI 49008.
- MICH. EPSILON (General Motors Inst.), G-3206 Beecher Rd., Flint, MI 48504.
- MICH. ZETA (Ferris State), Rankin Center Box 26, Big Rapids, MI 49307.
- MICH. IOTA-BETA (Michigan), 1408 Wash-tenaw Ave., Ann Arbor, MI 48104.
- MINN. ALPHA (Minnesota), 1815 University Ave., S.E., Minneapolis, MN 55414.
- MISS. GAMMA (Mississippi), P.O. Box 4476, University, MS 38677.
- MISS. THETA (Miss. State), MSU P.O. Drawer AM, Mississippi State, MS 39762.
- MISS. SIGMA (Southern Miss.), Box 472 Southern Sta., Hattiesburg, MS 39401.
- MO. ALPHA (Missouri), 24 E. Stewart Rd., Columbia, MO 65201.
- MO. BETA (Washington U.), 9 Fraternity Row, Box 82, St. Louis, MO 63130.
- MO. GAMMA (Westminster), 315 W. Fifth St., Fulton, MO 65251.
- MO. DELTA (Rockhurst), 5304 Tracy, Kansas City, MO 64110.
- MONT. ALPHA (Mont. State), 811 S. Willson Ave., Bozeman, MT 59715.
- MONT. BETA (Montana), 1120 Gerald Ave., Missoula, MT 59801.
- NEB. IOTA (Creighton), 2500 Cass St., Omaha, NB 68131.
- NEB. LAMBDA-PI (Nebraska), 635 N. 16th St., Lincoln, NB 68508.
- NEV. ALPHA (Nevada), 835 Evans Ave., Reno, NV 89502.
- N.H. ALPHA (Dartmouth), 38 College St., Hanover, NH 03755.
- N.H. BETA (New Hampshire), 28 Madbury Rd., Durham, NH 03824.
- N.M. ALPHA (Eastern N.M.), 610 W. First, Portales, NM 88130.
- N.M. TAU (New Mexico), 1811 Mesa Vista, N.E. Albuquerque, NM 87106.
- N.M. PHI (N.M. State), NMSU Box 3550, University Park, NM 88001.
- N.Y. ALPHA (Cornell), Hillcrest, Ithaca, NY 14850.
- N.Y. BETA (C. W. Post), C. W. Post College, Brookville Hall #27, Greenvale, NY 11548.
- N.Y. DELTA (Syracuse), c/o Richard J. Hancock, 418 Elm St., Syracuse, NY 13203.
- N.Y. EPSILON (Rensselaer Tech), 12 Myrtle Ave., Troy, NY 12180.
- N.Y. RHO (St. Lawrence), 62 Park St., Canton, NY 13617.
- N.C. ALPHA (N.C. State), 2701 W. Fraternity Ct., Raleigh, NC 27606.
- N.C. THETA (Davidson), Box 33, Davidson, NC 28036.
- N.C. NU (Duke), Box 4713, Durham, NC 27706.
- N.C. XI (North Carolina), 112 Fraternity Ct., Chapel Hill, NC 27514.
- N.D. ALPHA (North Dakota), 306 Hamline St., Grand Forks, ND 58201.
- N.D. BETA (N.D. State), 1125 16th St., North, Fargo, ND 58102.
- OHIO ALPHA (Youngstown), 850 Pennsylvania Ave., Youngstown, OH 44504.
- OHIO GAMMA (Ohio), 20 S. College St., Athens, OH 45701.
- OHIO DELTA (Ohio Wesleyan), 23 Williams Dr., Delaware, OH 43015.
- OHIO EPSILON (Cincinnati), 2707 Clifton Ave., Cincinnati, OH 45220.
- OHIO THETA (Ohio State), 1934 Indianola Ave., Columbus, OH 43201.
- OHIO KAPPA (Bowling Green State), Old Fraternity Row, Bowling Green, OH 43402.
- OHIO LAMBDA (Kent State), 222 University Dr., Kent, OH 44240.
- OHIO MU (Denison), SAE, Fraternity Row, Granville, OH 43023.
- OHIO NU (Toledo), 2007 Scottwood Ave., Toledo, OH 43620.
- OHIO RHO (Case Western Reserve), 11915 Carlton Rd., Cleveland, OH 44106.
- OHIO SIGMA (Mount Union), 1359 S. Union Ave., Alliance, OH 44601.
- OHIO TAU (Miami U.), 310 Tallawanda Rd., Oxford, OH 45056.
- OKLA. KAPPA (Oklahoma), 730 College, Norman, OK 73069.
- OKLA. MU (Okl. State), 1308 W. Third Ave., Stillwater, OK 74074.
- OKLA. TAU (Oklahoma City), 2418 N. Virginia Ave., Oklahoma City, OK 73106.
- ORE. ALPHA (Ore. State), 2929 Harrison St., Corvallis, OR 97330.
- ORE. BETA (Oregon), 812 E. 14th Ave., Eugene, OR 97401.
- ORE. GAMMA (Willamette), 900 State St., Salem, OR 97301.
- ORE. DELTA (Lewis & Clark), L&C Box 81, Portland, OR 97219.
- PA. ALPHA-ZETA (Pa. State), P.O. Box 949, State College, PA 16801.
- PA. GAMMA (Lafayette), College Sta. Box 4005, Easton, PA 18042.
- PA. DELTA (Gettysburg), 41 W. Lincoln Ave., Gettysburg, PA 17325.
- PA. EPSILON (Drexel), P.O. Box 7726, Philadelphia, PA 19101.
- PA. ZETA (Bucknell), 400 St. George St., Lewisburg, PA 17837.
- PA. THETA (Pennsylvania), 3908 Spruce St., Philadelphia, PA 19104.
- PA. SIGMA-PHI (Dickinson), HUB 400, Carlisle, PA 17013.
- PA. PHI (Carnegie-Mellon), 1085 Morewood Ave., Pittsburgh, PA 15213.
- PA. CHI-OMICRON (Pittsburgh), 244 N. Bellefield Ave., Pittsburgh, PA 15213.
- PA. OMEGA (Allegheny), AC Box 50, Meadville, PA 16335.
- R.I. ALPHA (Rhode Island), 67 Upper College Rd., Kingston, RI 02881.
- S.C. GAMMA (Wofford), Box 161, Spartanburg, SC 29301.
- S.C. DELTA (South Carolina), Univ. Sta., Box 85112, Columbia, SC 29208.
- S.C. NU (Clemson), Box 2157, Univ. Station, Clemson, SC 29631.
- S.D. THETA (S.D. State), 705 11th Ave., Brookings, SD 57006.
- S.D. SIGMA (South Dakota), 1856 Madison Ave., Vermillion, SD 57069.
- TENN. ALPHA (East Tenn. State), 2810 W. Walnut, Johnson City, TN 37601.
- TENN. BETA (Middle Tenn. State), Box 549 MTSU, Murfreesboro, TN 37130.
- TENN. DELTA (Tenn. Tech), 328 N. Willow Ave., Cookeville, TN 38501.
- TENN. ZETA (Southwestern), 2000 N. Parkway, Memphis, TN 38112.
- TENN. ETA (Union), Union Box 2073, Jackson, TN 38301.
- TENN. KAPPA (Tennessee), 1808 Fraternity Park Dr., Knoxville, TN 37916.
- TENN. NU (Vanderbilt), 2500 Kensington Pl., Nashville, TN 37212.
- TENN. SIGMA (Memphis State), 3601 Midland, Memphis, TN 38111.
- TENN. TAU (Tenn. at Martin), 528 Lee St., Martin, TN 38237.
- TENN. OMEGA (U. of the South), Box 1060, Sewanee, TN 37375.
- TEXAS ALPHA (Texas Tech), Box 4093 Tech Sta., Lubbock, TX 79409.
- TEXAS BETA (Texas Christian), TCU Box 29233, Ft. Worth, TX 76129.
- TEXAS GAMMA (Texas-El Paso), 444 E. Robinson, El Paso, TX 79902.
- TEXAS DELTA (Southern Methodist), 3105 Binkley, Dallas, TX 75205.
- TEXAS EPSILON (Houston), P.O. Box 14091, Houston, TX 77021.
- TEXAS RHO (Texas), 2414 Pearl St., Austin, TX 78705.
- UTAH UPSILON (Utah State), 809 N. 8th East, Logan, UT 84321.
- UTAH PHI (Utah), 1430 Federal Way, Salt Lake City, UT 84102.
- VT. BETA (Vermont), c/o Stephen J. Moreau, 184 S. Winsooki Ave., Burlington, VT 05401.
- VA. ALPHA (Randolph-Macon), Box 409, Ashland, VA 23005.
- VA. ZETA (Va. Polytech), 420 E. Roanoke St., Blacksburg, VA 24060.
- VA. KAPPA (William & Mary), Fraternity Complex, Williamsburg, VA 23185.
- VA. OMICRON (Virginia), 1703 Grady Ave., Charlottesville, VA 22903.
- VA. SIGMA (Washington & Lee), 205 E. Washington St., Lexington, VA 24450.
- VA. TAU (Richmond), RC Box 68, Univ. of Richmond, VA 23173.
- VA. UPSILON (Hamppden Sydney), Box 301, Hampden Sydney, VA 23943.
- WASH. ALPHA (Washington), 4506-17th St., N.E., Seattle, WA 98105.
- WASH. BETA (Wash. State), N.E. 865 B St., Pullman, WA 99163.
- WASH. GAMMA (Puget Sound), 3602 N. 14th St., Tacoma, WA 98406.
- WASH. CITY RHO (Geo. Washington), 2034 G St. N.W., Box 14, Washington, DC 20006.
- W.VA. ALPHA (Marshall), 1607-5th Ave., Huntington, WV 25703.
- W.VA. BETA (Bethany), Box 537, Bethany, WV 26032.
- WIS. ALPHA (Wisconsin), 627 N. Lake St., Madison, WI 53703.
- WIS. BETA (Ripon), c/o Ripon College, Ripon, WI 54971.
- WYO. ALPHA (Wyoming), Fraternity Park, Laramie, WY 82070.

Colonies

- Salisbury State Colony of SAE, Salisbury State College, Box 431 College Center, Salisbury, MD 21801.
- Davis and Elkins Colony of SAE, Box 454 Davis and Elkins College, Elkins, WV 26241.
- Indiana State-Evansville Colony of SAE, Indiana State University, U.C. Box 134, Evansville, IN 47712.
- Indiana of Pennsylvania Colony of SAE, 240 South 11th St., Indiana, PA 15701.
- Eastern Montana Colony of SAE, c/o Jim Eckenrood, Dir. of Residential Life, E.M.C., Billings, MT 59101.
- Baylor Colony of SAE, Box 135, Student Union Bldg., Waco, TX 76703.
- College of Charleston Colony of SAE, c/o SPO Box 1126, College of Charleston, Charleston, SC 29401.

alumni notes



Founder Member 309

Founder Members

Theodore K. Sterling

Theodore K. Sterling, **Denver '22 (Colorado Zeta)** has been designated as Founder Member 309 of The Levere Memorial Foundation.

Shortly after his initiation, Sterling transferred to Stanford University and affiliated with the California Alpha chapter there. He held various offices in the chapter. After receiving his J.D. from the Stanford Law School in 1925, Sterling worked for three years as an attorney for the Marland and Continental Oil Companies and then specialized in Texas oil land acquisitions for 23 years. In 1957, after resigning to engage in wildcat oil drilling, he located, drilled and completed the discovery well of the Castaic Hills Oil Field, now geologically designated the "Sterling Sand." Sterling remains active as an attorney and independent oil producer.

Sterling's two brothers, the late Charles W., Colorado Zeta '09 and the late Hawley W., Colorado Zeta '12, are also Founder Members 72 and 79 respectively of The Levere Memorial Foundation.

South Dakota Sigma at the University of South Dakota was named for Charles W. Sterling by Billy Levere, in honor of his invaluable aid in founding the chapter. The Number 1 Alaskan Highway down

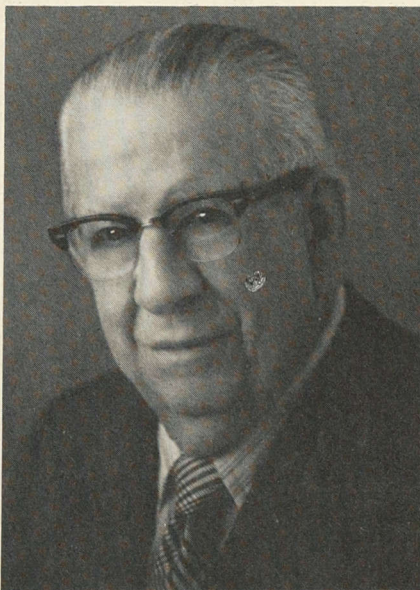
the Kenai Peninsula was named the "Sterling Highway" in honor of Howley W. Sterling, a pioneer engineer in Alaska.

Emmett B. Moore

Emmett B. Moore, **Montana State '24 (Alpha)** of Olympia, Washington became Founder Member #310. The Past ESA served on the Supreme Council from December, 1940 to 1951. He was elected as Eminent Supreme Chronicler in December 1940, the second man to hold the position. He served in the other Council offices until elected ESA in 1949. He served until 1951.

Moore has been active in Σ AE since his undergraduate years. He served as EA at Montana Alpha for three terms. Shortly after his graduation, he was elected to a Province Lambda office and in 1935 was elected Archon of the Province. He served 15 years as a province officer before his election to the Supreme Council.

In addition, Moore attended sixteen Leadership Schools and was assistant director for 10 of those years.



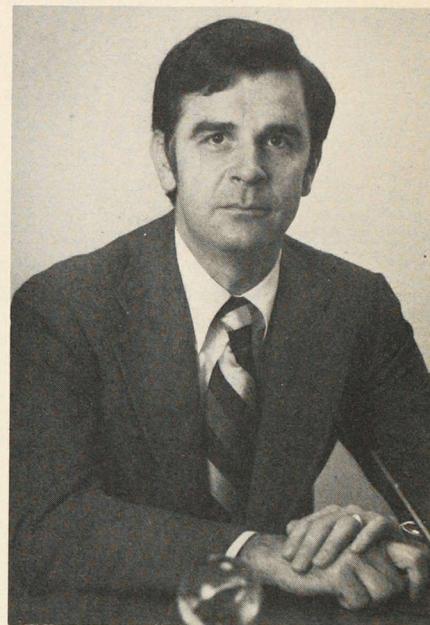
Past ESA becomes Founder

Since his retirement from the Supreme Council, he has actively continued his Σ AE involvement. His work at national conventions has included work on the ritual revisions and at the past two conventions he has administered the oath of office to the new Supreme Council members. He is presently the oldest living Past ESA of the Fraternity.

From 1929 to 1966, Moore was a member of the civil engineering faculty of

Washington State University. He was head of the department from 1945 until his retirement in 1966.

Moore's Founder Membership was finally achieved on November 1, 1976. He began his contributions in 1924 with a Life, now Century Membership and has now completed a plateau which he sought for many years.



V.P. for Bank of Montreal

Calvin R. Myers, **Miami '59 (Ohio Tau)** has been named regional vice president of the Bank of Montreal (California). He will be responsible for banking activities in Southern California, and corporate banking accounts in Arizona, Nevada, New Mexico and Hawaii.

Myers has been with the Bank of Montreal (California) since 1971 when he joined the bank as a vice president and their San Francisco manager. Prior to that time he served as assistant vice president of the Huntington National Bank of Columbus, Ohio.

Jay S. Beck, **Denison '56 (Ohio Mu)**, has received the Summit Award from the National Life Insurance Company of Vermont, a mutual life insurance firm. The award, the company's highest form of agent recognition, recognizes and honors the fact that Beck holds the Chartered Life Underwriters Designation and is a life member of the Million Dollar Round Table and the President's Club of National Life of Vermont.

Beck joined National Life of Vermont in 1957 and holds a variety of company and life industry honors.

Noel Engler, **Florida Southern '58 (Gamma)** has been appointed Director, On Air Promotion for NBC-TV.

Engler has been Manager of Production, On Air Advertising since 1969. He began his career in advertising as a Promotional Services Coordinator.



President Georgia Bar Association

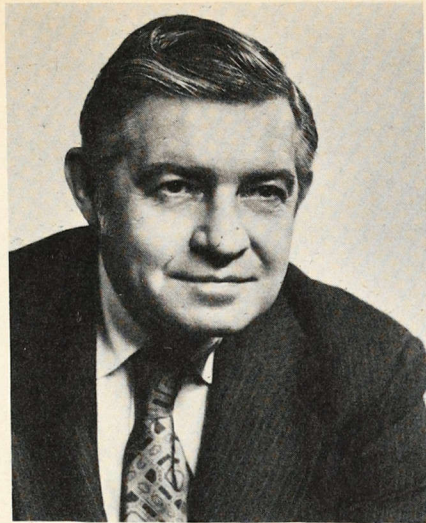
Harold G. Clarke, **Georgia '48 (Beta)** has been elected president of the Georgia Bar Association for 1976-77. Clarke is an attorney in Forsyth, Georgia and has served many years in the Georgia legislature.



Wins golf championship

James R. Gabrielson, **Georgia '63 (Beta)** of Atlanta, is the 1976 Georgia Amateur Golf Champion, a title he also won in 1970 and 1974.

Gabrielson, an insurance executive, was captain of the University of Georgia golf team in 1963, the year he was chosen for the NCAA All America Team. He also was the 1964 Atlanta Amateur Champion, a member of the U.S. Walker Cup team in 1971, and in 1974 was runner-up in the British Amateur Championship.



TWA chief executive

Elected Chairman TWA

L. Edwin Smart, **Harvard '45 (Massachusetts Gamma)** has been elected Chairman and Chief Executive of Trans World Airlines, Inc. effective January 1, 1977. Smart graduated Magna Cum Laude from both Harvard College and Harvard Law School in 1949, joined TWA in 1967 as Senior Vice President of External Affairs, and has served as a member of the Board of Directors of the Corporation since 1967. He was appointed Senior Vice President of Corporate Administration in 1975, and elected Vice Chairman in 1976. Prior to joining TWA, Smart was President of International Operations for the Bendix Corporation, before which he was a partner in the law firm of Hughes, Hubbard and Reed.

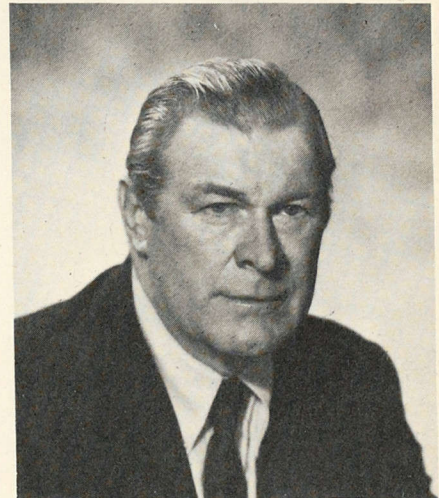
Powell Bales, **Missouri '60 (Alpha)** has been appointed merchandising manager of the Gulistan Carpet Division of J. P. Stevens, Inc. The announcement was made by the vice president-marketing of the division and became effective June 1.

Bales previously had been regional contract manager for Gulistan and was based in Los Angeles. In his new position he will be responsible for coordinating merchandising, advertising, sales promotion and publicity activities of the division.

Prior to his association with Gulistan, Bales was with William Volker & Co. in a sales capacity.

The Twin Cities Alumni Association is hosting the 75th anniversary banquet for Minnesota Alpha. The Banquet will be held in conjunction with the association's Founders' Day celebration, May 7, 1977. The event will be held at the Radisson South Hotel.

The Williams Club in New York City will be the site of the 1977 Founders' Day celebration for the New York Alumni Association. The March 9 event will feature Russell Heuer, ESA, as speaker. He will recognize outstanding ΣAE alumni from the fields of athletics, communication, arts, government, finance insurance, manufacturing and education. This award, The Highest Effort Award (THE) is presented for the first time by the association.



Head of N.Y. real estate appraisers

Henry C. Suominen, **Syracuse '44 (New York Delta)** has been elected to serve as Governor of the New York State Society of Real Estate Appraisers. The organization is a division of the New York State Board of Realtors and his three year term began January, 1977.

Jarret L. Davis, **Georgia Tech '50 (Phi)** of Atlanta, has been elected Treasurer and a member of the Executive Committee for the American Society of Chartered Life Underwriters. He is a general agent for Provident Life and Accident in the Atlanta area.

Davis was elected during the Society's Annual Meeting held at the Shoreham-Americana in Washington. The American Society is a 22,000 member national professional organization for insurance men and women who hold the Chartered Life Underwriter (CLU) designation.

Dr. Elmo W. Davis, **Idaho '44 (Alpha)**, was recently named Corporate Agricultural Scientist of McCormick & Company, Inc. He is a leading authority on the growing, breeding and seed production of onions and has been with McCormick's Gilroy Foods subsidiary in California since 1966.

Davis will be consulting advisor in the establishment of agricultural research and development programs. He will also monitor and coordinate the firm's external agricultural research activities.

Davis served as an associate professor of horticulture at Kansas State College prior to joining the Department of Agriculture in 1953. He served as a geneticist and horticulturist with the Department until 1965.



Awarded Honduran honor

Francis Doll, Jr., **SMU '46 (Texas Delta)** has been awarded the Order of Francisco Morazan, the highest decoration bestowed by the Honduran Government for meritorious service to that country. Doll serves as Consul-General of Honduras at St. Louis, Missouri.

Doll has represented that country in a Consular position for over 28 years. He has led relief campaigns which raised over \$1 million for that country after Hurricane Fifi ravaged the north coast in 1974. He also worked to raise funds and supplies for the victims of Guatemala's earthquakes.

Doll is one of the few, if not the only private U.S. citizen to receive the Order of Morazan.

James A. Haxton, **Minnesota '59 (Alpha)** of Glendale, California, was chosen salesman of the year at the Fifth Annual Applied Materials, Inc. Sales Conference in San Diego, California. He is regional sales manager for the Santa Clara, California based electronics firm. He was chosen for his outstanding sales record, his sales management capabilities and ability to build successful customer relationships.

Haxton represents the firm throughout the central United States.

Joseph J. Tavormina, **MIT '76 (Iota-Tau)** of Marietta, Georgia, has been selected a Hugh Hampton Young Fellow. Tavormina is a graduate student at MIT in mechanical engineering.

The fellowship was established in 1966 by an anonymous donor to honor Dr. Hugh Hampton Young, a distinguished surgeon at Johns Hopkins University. The award was given for the first time this year.

Tavormina was chosen on the basis of leadership qualities by the fellowship council.

James B. Rice, **Syracuse '51 (New York Delta)** has been renamed to the board of directors of Conklin, Labs & Bebee Advertising and Public Relations. He has served the agency for 12 years as secretary-treasurer of the board of directors.

In addition, Ronald S. Cameron, **Syracuse '51 (New York Delta)** has been named executive vice president of the firm. He has been associated with the agency for 14 years and has served as senior vice president. He is a specialist in sales management and marketing.



Chairman of advertising firm

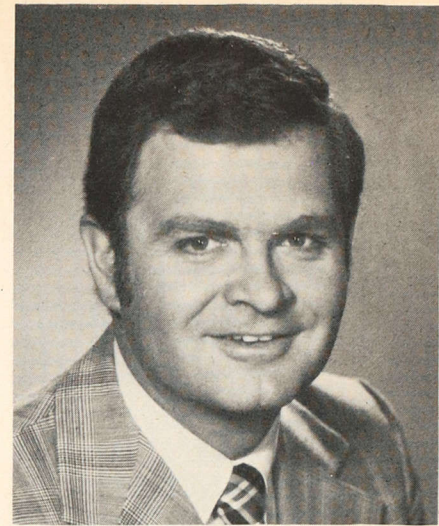
Edward J. Labs, **Syracuse '50 (New York Delta)** has been named chairman of the board and chief operating officer of Conklin, Labs & Bebee. He is a director of the American Advertising Agencies International and has been named a National Advertising Man of the year.

All founders, the treasurer and senior officers of the corporation were members of New York Delta at Syracuse.

Prime F. Osborn, **Alabama '36 (Mu)** was selected by the National Conference of Christians and Jews as the recipient of its National Bicentennial Brotherhood Award. He was honored "in recognition of the abundance of his contributions to humanitarian causes, his profound love of country and his devotion to the ideals of brotherhood."

Osborn is president and chief executive officer of Seaboard Coast Line and Louisville and Nashville railroads, a member of the board of directors for 33 corporations, was recipient of the 1962 Jacksonville, Florida Man of the Year award, the 1973 Religious Heritage of America award, the highest citations given by the Boy Scouts of America, and is listed in many **Who's Who** Publications.

Osborn is active in the Episcopal church and various charitable, social and fraternal organizations. He currently resides in Jacksonville, Florida.



Joins Dodger announcing team

Joins L.A. Dodgers

Ross Porter, **Oklahoma '60 (Kappa)**, has joined the radio-television announcing team of the Los Angeles Dodgers. He will join the play-by-play team of Vin Scully and Jerry Doggett.

Porter, an award-winning sportscaster for KNBC News for the past ten years, has been awarded the Golden Mike Award in 1969 and 1972 for the best television sports telecast in Los Angeles and has won the Greater Los Angeles Press Club Award four times.

He has captured a Los Angeles area Emmy and in 1970, 1972, and 1973 the Associated Press honored Porter with its award for the best television sports show in California.

Walter C. "Jack" Wood, **Massachusetts Institute of Technology '17 (Iota-Tau)**, was honored last October at the dedication ceremonies of MIT's newly expanded and renovated Wood Sailing Pavilion. Wood, the Institute's first sailing master, held the post for 27 years and was a pioneer in organized sailing.

The first collegiate sailing program in the United States was established at MIT in 1935. While the original Pavilion was still under construction in 1936, the wooden Tech dinghies arrived at MIT, setting the standard for collegiate sailing and racing in the United States. Under Wood's guidance, MIT rose to a position of prominence in North American racing, including representation at the U.S. Olympics. The MIT program also served as a model and training ground for other Boston area colleges. Wood also founded the Intercollegiate Yacht Racing Association's Hall of Fame at the U.S. Naval Academy and was among the first elected to membership in 1969.

Wood served as honorary chairman of the Sponsoring Committee for the renovation project.

Ind. Beta Honors Two

Portraits of two distinguished **Indiana Beta** alumni were presented to the chapter on October 2. The portraits of Etheridge Baugh '23 and Donald Fassler '32 were presented to the chapter house by Jack C. Smalley, **Purdue '41 (Ind. Beta)**, vice president for housing and food service at Purdue and William K. Creson, **Purdue '24 (Ind. Beta)** a director of the chapter house corporation.



Baugh and Fassler honored

A hundred or more alumni and guests were present to honor the two alumni of Indiana Beta. Baugh had served the chapter and Purdue from the time of his graduation until his death. He served as secretary of the Purdue Alumni Association and editor-in-chief of the **Purdue Alumnus**. He also served the chapter as vice president of their alumni association when it was formed in 1953 and served as its president from 1958 until his death.

Fassler was also active with the chapter and served as president of the chapter house corporation until his death.

The oil painting of Eth Baugh was a gift of A. H. Krom, uncle of Stewart W. Bolinger, **Purdue '57 (Ind. Beta)** and the portrait of Don Fassler was a gift of his widow.

The Greater Baltimore, Maryland, Board of Realtors has nominated Bayard H. Waterbury, **South Dakota '42 (Sigma)** as president of the Board, after he served as second vice-president for the past year. Waterbury, vice-president of W. C. Pinkard and Co., Inc., has been in the real estate business for 28 years. He was President of the Maryland-D.C. chapter of the Society of Industrial Realtors in 1971 and 1972, and has also served as Chairman of the Baltimore City Economic Development Committee in 1962-63.

Charles W. Lineberger, **California State-Long Beach '67 (Lambda)** was recently appointed manager of Blyth Eastman Dillon brokerage house, the firm's most productive office on the West Coast. Lineberger joined the New York based firm in 1971.

William B. Grismer, **Minnesota '44 (Alpha)** has joined the offices of Lord, Sullivan and Yoder, Inc., an advertising agency in Des Moines, Iowa, as a vice-president and account executive. Grismer, who has been in the advertising business in Des Moines for 22 years, was the owner and president of the Grismer Advertising Agency, (Des Moines), since 1966. Lord Sullivan and Yoder, Inc., headquartered in Marion, Ohio, had established its Des Moines office in 1973.

Included in the 1976 edition of **Who's Who** is William W. Kimbrough, III, M.D., **Michigan '49 (Iota-Beta)**. Kimbrough received his Doctor of Medicine Degree from the University of Michigan Medical School in 1952, and served the U.S. Public Health Service during the Korean War, achieving the rank of Lt. Commander. Until 1961 he was Associate Psychiatrist in the University of Michigan Health Center, and then entered into his full-time practice of psychoanalytic psychotherapy in Ann Arbor, Michigan.

Kimbrough, a member of various psychiatric associations, was the recipient of the Physician's Recognition Award given by the American Medical Association in each of the years 1972 through 1975. In addition, Kimbrough is an acknowledged expert in forensic (legal) psychiatry and has served as a consultant to the Attorney General of the United States and the Center for Forensic Psychiatry in the State of Michigan in that capacity.

Active in the Fayetteville, Arkansas Chamber of Commerce are three alumni from the **University of Arkansas (Alpha-Upsilon)**.

W. Curtis Shipley '55, President of the Chamber, named Alcuin P. Eason, Jr. '46 as President-elect of the Chamber, to take office on December 1. Eason is President of the First Federal Savings and Loan Association, and has been a member of the board of directors of the Chamber since 1975, serving as first vice-president this past year. Eason's new position was created as a result of changes in the Chamber's by-laws.

The revised by-laws also resulted in a new title for Hugh H. Brewer, Jr. '59, as Vice-President, economic development.

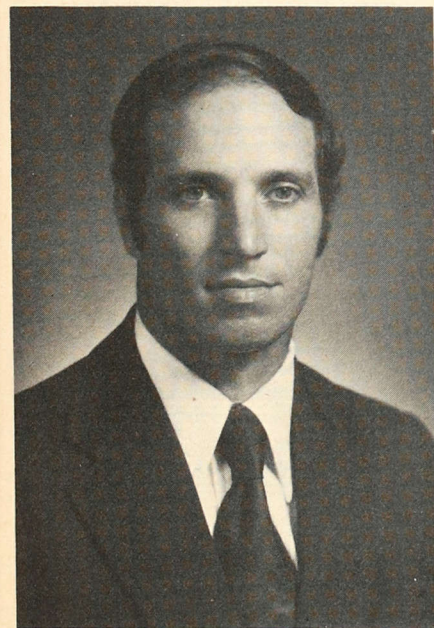
Robert E. Thompson, **Nebraska '60 (Lambda-Pi)**, has won a membership in the 1976 President's Club of the National Life Insurance Company of Vermont. Thompson, a Chartered Life Underwriter and affiliate of the Omaha/Tompsett general agency, received the membership in recognition of his outstanding client service and sales. Thompson gave the invocation at the opening of the general session of the Club's five-day educational conference in Colorado Springs last September.



Elected president of NEC

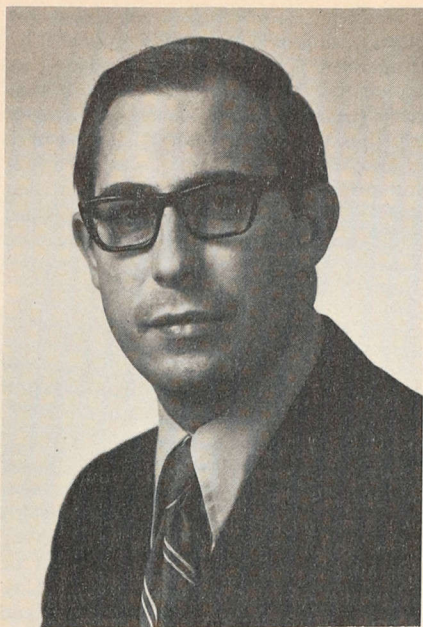
James P. Ince, **Drake '44 (Iowa Delta)** of Washington, D.C., has been elected president and chief executive officer of Natural Energy Corporation (NEC). He is a solar energy marketing consultant.

NEC offers design consultation, marketing and installation services for residential and industrial applications. The firm provides solar consulting and supplying of solar collectors and other system components.



Elected Optimist president

Roland Gomez, **Florida '60 (Upsilon)** was recently elected President of the Miami Lakes, Florida Optimist Club. Gomez is a partner in the law firm of Kates, Ress, Gomez and Rosenberg of North Miami, and has served as President of the North Miami Kiwanis Club.



Frederick M. Brubaker

Frederick M. Brubaker, **Michigan '62 (Iota-Beta)** has been promoted to vice-president, pharmaceutical products marketing, at Mead Johnson and Company from his position as director, pharmaceutical products marketing. Brubaker's responsibilities include directing the marketing activities of the Company's lines of pharmaceutical and over-the-counter products. Brubaker joined Mead Johnson in 1965 as a business intern following his graduation from the University of Michigan Graduate School of Business.

De Witt Buchanan, **Purdue '98 (Indiana Beta)** is one of the few remaining Americans who have seen both centennials of the United States. Although only 44 days old when our nation celebrated its 100th birthday, Buchanan has lived and seen much of the United States history unfold, and this past year celebrated both his 100th birthday and the country's 200th. Born in Chicago, Ill., Buchanan recalls hunting buffalo on the Great Plains, and traveling to Santa Barbara in search of his mother and two sisters after the great San Francisco earthquake.

About five years ago, Buchanan retired from the family coal business based in Southern Illinois, after the company merged with Standard Oil. He now spends his winters in Florida and the summer months in Wisconsin.

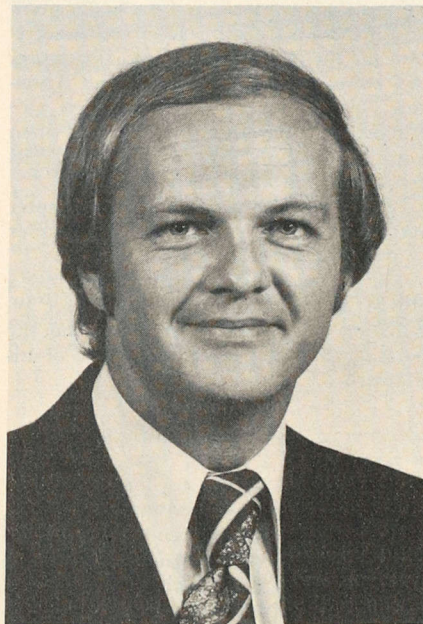
Clifton B. Leech, Jr., **Rhode Island '50 (Alpha)**, an assistant general agent of the Providence/Joslin general agency of the National Life Insurance Company of Vermont, has won a membership in the firm's 1976 President's Club. Membership in the club, which recognizes outstanding client services and sales, included the oppor-

tunity to attend a five-day educational conference in Colorado Springs. Approximately 270 members of the Club from throughout the country were eligible to attend.

V.P. for PACE*

Russell G. Barmmer, **Boston '63 (Massachusetts Beta-Upsilon)** has been promoted to Vice President, Marketing, for the PACE* Corporation, a communications firm. Barmmer joined PACE* in 1974 as director of communication and client services, prior to which he was public relations supervisor of the Southern Connecticut Gas Company. He previously held public relations management posts with Aetna Life and Casualty, Royal Typewriter, and General Electric Company.

Barmmer, a past president of the Connecticut Association of Professional Communicators, attended the Fairfield University Graduate School of Corporate and Political Communication and has taught public relations courses at the University of Connecticut and the University of Bridgeport.



Ronald E. Boose

Ronald E. Boose, **Bowling Green '69 (Ohio Kappa)** has been named a career representative of the Detroit/Kanter general agency of the National Life Insurance Co. of Vermont, a mutual life insurance firm. Boose received his bachelor of science degree in marketing, and in 1973 received a master's degree in business administration from Ohio State University. As an undergraduate, he served as Eminent Archon of his chapter and was a member of Omicron Delta Kappa honorary. Before joining National Life, Boose taught business educa-

tion in the Columbus, Ohio public schools, and later was the assistant vice-president of Citizens Mortgage Investment Trust in Southfield, Michigan.

Charles Godwin, **Pennsylvania '50 (Theta)**, a Chartered Life Underwriter and affiliate of the Jacksonville/Hazard agency, has won a membership in the 1976 President's Club of the National Life Insurance Company of Vermont. Recognizing outstanding client services and sales, membership in the Club also included the opportunity to attend the Club's five-day educational conference in Colorado Springs last September.

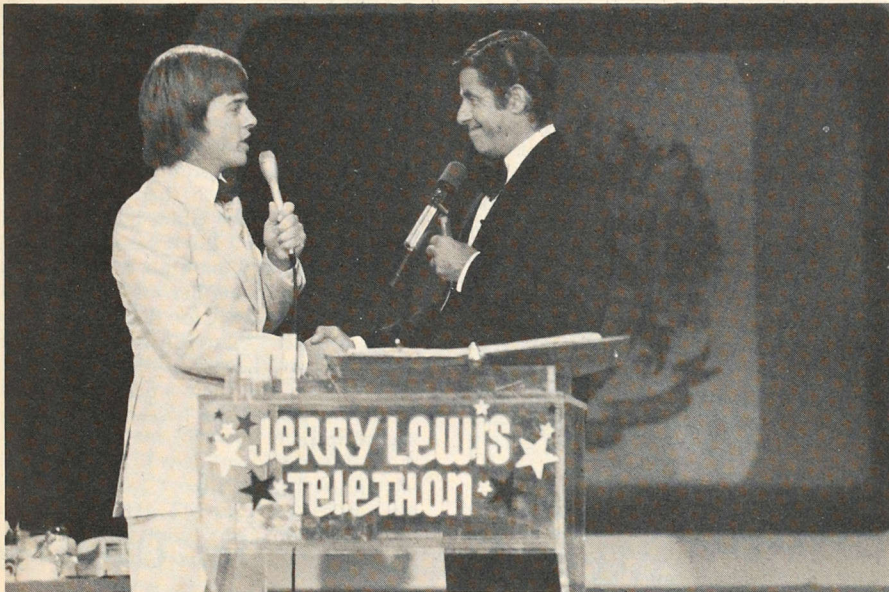
A \$5,000 endowed scholarship fund was granted to the University of Maine at Orono by RCA Corporation in the name of Dr. Harold H. Beverage, **Maine '15 (Alpha)**. The scholarship is to be used to assist an undergraduate student in electrical engineering.

A pioneer in radio communication, Beverage is a former vice president in charge of research and development for RCA and was employed by them until his retirement in 1958. He still acts as a part-time consultant to RCA Laboratories. In addition, Beverage was awarded the General Alumni Association's Career Award for his outstanding record in professional, business and public service activities.

Income from the Scholarship Fund will be used annually for a scholarship not based on financial need. The student receiving the scholarship must maintain a 2.5 grade point average and it may be awarded for a maximum of eight semesters.

STATEMENT OF OWNERSHIP, MANAGEMENT AND CIRCULATION		ISSUE DATE: 1977	
1. TITLE OF PUBLICATION		2. ISSUE DATE	
The Record of Sigma Alpha Epsilon		9-8-76	
3. NUMBER OF ISSUES PUBLISHED ANNUALLY		4. ANNUAL SUBSCRIPTION PRICE	
Quarterly		\$2.00	
5. LOCATION OF HEADQUARTERS OFFICE OF PUBLICATION (Street, R. F. D., County, State and ZIP Code) (Not printer)			
1856 Sheridan Road, Evanston, IL 60201			
6. LOCATION OF THE ASSOCIATION OR OTHER ORGANIZATION OF WHICH THE PUBLISHER IS THE OFFICE			
The Levere Memorial Temple, 1856 Sheridan Road, Evanston, IL 60201			
7. PUBLISHER (Name and Address)			
Sigma Alpha Epsilon, 1856 Sheridan Road, Evanston, IL 60201			
8. EDITOR (Name and Address)			
Jack R. Wotaling, 1856 Sheridan Road, Evanston, IL 60201			
9. MANAGER (Name and Address)			
Dr. Joseph N. Walt, Simpson College, Indianola, IA 50125			
10. CHECK IF CONTROL BY CORPORATION, SOCIETY OR OTHER ORGANIZATION. If not checked, the names and addresses of stockholders or members owning or holding 1 percent or more of total amount of stock, if not owned by a corporation, the names and addresses of the individual owners must be given. If owned by a partnership or other unincorporated firm, the name and address, as well as that of each individual must be given.			
11. NAME AND ADDRESS			
12. CHECK IF KNOWN BONDHOLDERS, MORTGAGEES, AND OTHER SECURITY HOLDERS OWNING OR HOLDING 1 PERCENT OR MORE OF TOTAL AMOUNT OF BONDS, MORTGAGES OR OTHER SECURITIES OF THIS OR ANY OTHER COMPANY.			
13. FOR COMPLETION BY NONPROFIT ORGANIZATIONS AUTHORIZED TO MAIL AT SPECIAL RATES (SECTION 3527, PSN): The purpose, function, and nonprofit status of this organization and the exempt status for Federal income tax purposes (Check one)			
<input type="checkbox"/> HAVE BEEN CHANGED DURING PRECEDING 12 MONTHS <input type="checkbox"/> HAVE CHANGED DURING PRECEDING 12 MONTHS <input type="checkbox"/> NO CHANGE DURING PRECEDING 12 MONTHS			
14. EXTENT AND NATURE OF CIRCULATION			
A. TOTAL NUMBER OF COPIES (Net of Postage)		B. AVERAGE NO. COPIES EACH ISSUE DURING PRECEDING 12 MONTHS	
1. PAID CIRCULATION (Sum of 1a and 1b)		77,475	
2. MAIL SUBSCRIPTIONS (Sum of 2a and 2b)		64,750	
3. SALES THROUGH DEALERS, CARRIERS, STREET VENDORS AND COUNTER SALES			
4. MAIL SUBSCRIPTIONS		74,301	
5. TOTAL PAID CIRCULATION (Sum of 1 and 2)		62,956	
6. FREE DISTRIBUTION BY MAIL, CARRIER OR OTHER MEANS (Sum of 6a, 6b, 6c, 6d, 6e, 6f, 6g, 6h, 6i, 6j, 6k, 6l, 6m, 6n, 6o, 6p, 6q, 6r, 6s, 6t, 6u, 6v, 6w, 6x, 6y, 6z)		74,301	
7. OFFICE USE, LEFT-OVER, UNACCOUNTED FOR, SPOILED, AFTER DEDUCTIONS		933	
8. TOTAL DISTRIBUTION (Sum of 6 and 7)		63,846	
9. COPIES NOT DISTRIBUTED		75,234	
10. RETURN FROM NEWS AGENTS		2,241	
11. TOTAL (Sum of 8, 9, 10 and 11 should equal net press run shown in 14)		904	
12. TOTAL (Sum of 11 and 12 should equal net press run shown in 14)		77,475	
13. TOTAL (Sum of 12 and 13 should equal net press run shown in 14)		64,750	
15. Verify that the statements made by me above are correct and complete.			
SIGNATURE AND TITLE OF EDITOR, PUBLISHER, BUSINESS MANAGER OR OWNER			
16. FOR COMPLETION BY PUBLISHERS MAILING AT THE REGULAR RATES (SECTION 3527, PSN):			
17. U. S. C. 3926 provides in pertinent part: "The amount which would otherwise be payable for postage shall be deemed to be paid if the publisher has deposited with the post office a statement of ownership in accordance with the provisions of this section. The printer (provided) shall not be liable for the postage if the publisher complies with the provisions of this section." I hereby certify that the information furnished on this form is true and complete and that I am the publisher, business manager, or owner of this publication.			
18. SIGNATURE AND TITLE OF EDITOR, PUBLISHER, BUSINESS MANAGER OR OWNER			

chapter news



Kelley presents check to Lewis

\$40,000 to M.D.

Rick Kelley, National Collegiate Council Chairman, presented Jerry Lewis with a check for \$40,000 on the annual Jerry Lewis Labor Day Telethon for muscular dystrophy. In addition, Mike Olson, **Minnesota '77 (Alpha)** gave a check for \$15,000 which represented funds raised by a dance marathon sponsored by Minnesota Alpha on the Minnesota campus last January.

Over the past two years, the "FAD," Fight Against Dystrophy, has raised more than \$60,000 for MDA's patient service and research programs.

Chapters this year have already completed some "FAD" projects. Texas Delta at Southern Methodist sponsored a dance marathon on October 1 and 2 which raised over \$16,000 and \$1,500 was raised in a bathtub marathon at Clemson.

Indiana Sigma at **Indiana State** has been active in both community service and campus activities this fall.

A Halloween party was given by the chapter for the children of Glenn Home, a home for unfortunate children of the Terre Haute area. With the assistance of the Little Sisters, the children enjoyed bobbing for apples and many singing games. At the end of the evening the children ran through the house knocking on all the bedroom doors trick or treating. The forty children received large amounts of candy from the chapter members and Little Sisters.

A big honor on the Indiana State campus is to be selected for the Campus Revue staff. Mike Mokrycki '77 and Pat Rooney '78 were selected by a five member selection committee to participate.

The Campus Revue is a production of Greek organizations with the goal of providing an entertaining show which will assist in the funding of the Panhellenic and Interfraternity Council scholarship programs.

Mike Cason '77, the number one golfer on the Indiana State team, won the Terre Haute annual invitational golf class. A field of over one hundred golfers participated in the two-day event which was easily won by Cason.

And lastly, the chapter worked many hours on their float for homecoming and placed third for their efforts. The theme of Homecoming was Saturday Morning Madness and the chapter made a float of Popeye and Brutus.

The men of **West Virginia Beta** at **Bethany** captured the intramural football crown for 1976. They scored 276 points to 70 for their opponents.

The chapter captured the title with a victory over defending champion Sigma Nu and an 18-6 win over top contender Beta Theta Pi.

The chapter is currently in contention for the intramural title. They finished second in the men's cross-country meet, placing four runners in the top ten.

Fred Haggerty, **DePauw '77 (Ind. Delta)** and Steve Shull, **DePauw '78 (Ind. Delta)** coached the league champions for Youth Football in Greencastle this past fall.

The two were cited at the awards dinner for the activity and the Public Relations Director for DePauw said, "I just wanted you both to know that the University also appreciates your initiative in the important work of lending a helping hand within the larger community."

Virginia Zeta at **Virginia Polytechnic Institute** has been awarded first place in academics for 1976 by the IFC. The chapter overall average was 2.82. This is the first award the chapter has received since obtaining their charter in 1975.

As part of their fall work project the men of **Indiana Delta** at **DePauw University** are working at Brookside Court, a part of Community Inter-Faith Housing in Indianapolis.



Cal Gamma and "Angels"

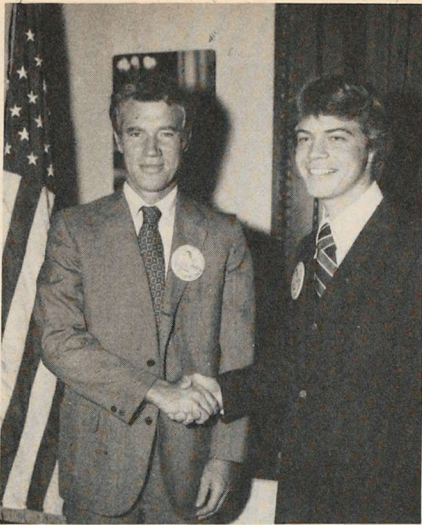
"Charlie's Angels" are Little Sisters of Minerva. **California Gamma** at **USC** initiated the three television stars into their Little Sister group.

The chapter also captured the intramural football championship this fall.

Tennessee Sigma is now the largest fraternity on the **Memphis State** campus. The chapter pledged 24 men this fall and are extremely proud of their standing on campus.

In addition to a successful rush, the chapter has placed first in Anchor Splash and second in the homecoming float competition. Also, two Little Sisters of the chapter were named to the homecoming court.

Three members of the chapter hold positions of influence on the MSU campus. Mark Murchison '78 is vice president of Delta Sigma Pi business fraternity, George Brannon '76 is president of the Pre-Medical Society and Larry Leon '76 is president of the Interfraternity Council.



Anderson proclaiming Homecoming Week

October 4-9, 1976 was declared University of Minnesota Homecoming Week by Governor Wendell Anderson, **Minnesota '56 (Alpha)**. The week's activities included a homecoming queen contest which was determined by athletic ability to a French fry eating contest. The theme of the homecoming, which was chaired by Scott Fuller '78 was "French Fri the Illini."



Generally presents award

Community Service Winner

ESH Richard Generally visited the **Morehead State** campus on October 23 to present the Community Service Award to **Kentucky Gamma**. The award was made during the half-time activities of the football game.

Kevin Barney '77, the Community Service chairman for the chapter, represented the chapter and Adron Doran, President of Morehead State accepted the \$1,000 check on behalf of the University.

In addition to their work in community service, the chapter was also a runner-up in the Zeal Award competition. And they are in the process of building a new house with the funds they have raised from their cane crop.

The men of **California Pi** at **California State-Fullerton** have rushed the largest pledge class on campus. The chapter netted 19 pledges as opposed to a campus average of 8.

They also are in contention for the intramural trophy this year. Their football teams placed third and fifth respectively and they won the volleyball championship. The chapter is favored to win in track, racketball and baseball.

In addition, an alumni association has been formed for the chapter with the help of Tom Meyers, '71. With their assistance, the chapter hopes to begin plans for the building of a chapter house.

Rush was successful for the brothers of **Wyoming Alpha** at the **University of Wyoming** this year, as they pledged 20 men and are expecting more. As participants in the Annual Muscular Dystrophy telethon, the chapter house was donated as a telephone center, and \$35,000 was collected in pledges. In addition to their campus activities, the brothers plan on helping "in any way to make our province (Eta) one of the top ones." They will be sending a group of brothers to assist in the revival of the chapter at the University of Colorado (Chi) in Boulder.

Brother Denny Gallegos '77 was selected as the mascot-yell leader, "Pistol Pete," for the Wyoming Cowboys. Gallegos, a senior majoring in business, sees the Pokes having a winning season this year and as part of his plan he is going to work on getting the people "more rowdy and involved at the games."

The Σ AE's are pulling bathtubs. From Blissfield, Michigan to Adrian, the members of **Michigan Alpha** are pulling bathtubs in a fund-raising drive for the American Cancer Society. The pull is a tradition for the chapter, some say dating back as far as 15 years.

The men hope to solicit \$1,000 for the charity. They begin on the street corners of Toledo, trying to solicit aid. Then they travel to Blissfield, where it all begins. The end is at the **Adrian** football game. Hopefully, with the help of people along the way and the student body at the game, they will reach their goal.

According to the editor-in-chief of College World, "... But any group that is willing to haul a bathtub from Blissfield to Adrian must either be psychotic or have a good reason for doing it. I know some of the Σ AE's. I'll vouch for their sanity. What they must have then, is a good reason for their work. The Σ AE's deserve a pat on the back for their charitable spirit."

Money for Diabetes

On Sunday, October 3, the men of **California Mu** at **Cal State, Los Angeles**, recruited donations and then rode their bikes 22 miles to raise \$1,050 for the American Diabetes Association.

The bikeathon was held throughout Southern California and was sponsored by MacDonalds restaurants. Donations were solicited from fraternities, sororities, personnel of Cal State Los Angeles and the business community in the surrounding area.

Last year the chapter received a special commendation for their efforts on behalf of the Diabetes Association. This year they may receive a 10 speed bicycle for soliciting the most donations at their checkpoint.

Diabetes bike riders



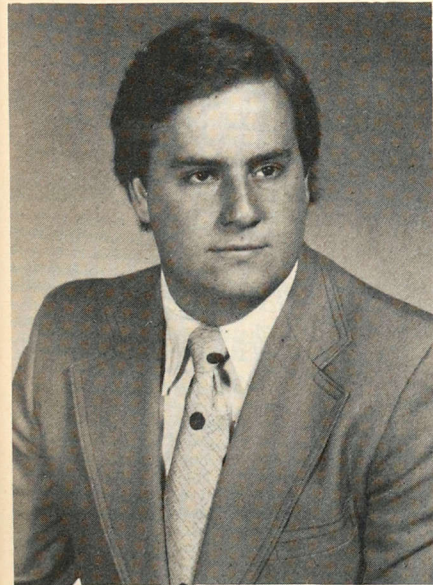


M.D. bathtub sitters

Bathtub Sitting

Over \$1,400 was raised by the members of **South Carolina Nu** at **Clemson** for Muscular Dystrophy. They raised the funds by sponsoring a Bathtub marathon. The marathon lasted 72 hours, beginning at 2:00 P.M. Wednesday, September 15 and ending at 2:00 P.M. Saturday, September 18.

Along with the chapter, the event was sponsored by the members of **Chi Omega**. One member of each sex occupied the tub simultaneously, accepting pledges and donations for MD. The president of the university and the head coach of the football team also participated.



Outstanding Greek Winner

Bruce Woner, Kansas '76 (Alpha) was selected by the Interfraternity Council on the campus as one of the two "Outstanding Greeks" last spring. Woner was selected for his contributions to the Greek and University communities. While at Kansas, Woner served as Eminent Archon and Rush Chairman of the chapter, and was also a 3-term student senator, Chairman of the Student Executive Committee, member of the Junior and Senior men's honoraries and a Summerfield Scholar his last two years.

Kentucky Kappa at **Centre College** is making an amazing comeback. The chapter has organized and participated in a successful rush and has planned homecoming and Founders' Day activities.

In addition, the men have surprised the campus in intramurals. During the regular football season, their team came in with a 6-2 record. However, they swept the playoffs and then captured the title with a 13-6 win over **Beta Theta Pi**. After this stunning victory, the chapter was made the favorites to win the intramural basketball tournament.

Academically, the chapter is also strong. They currently hold the highest GPA on campus and are the frontrunner for the Yerkes Cup, an award given each winter to the fraternity with the highest GPA on campus.

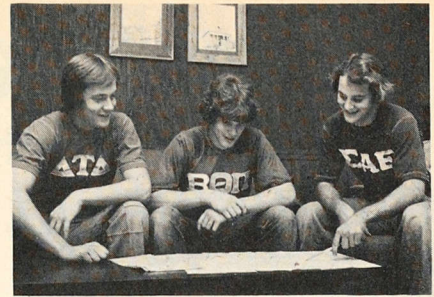
Individually, the chapter members are active in campus activities. Besides varsity sports, they also are members of **Omicron Delta Kappa**, the yearbook and newspaper staffs and **Daryll Martin '78** initiated the ROTC program on campus this year.

Posting a record of 17 wins and 2 losses guaranteed the capture of the Interfraternity and All-School intramural flag football championships for **Mississippi Theta** at **Mississippi State**.

The men of **Tennessee Alpha** at **East Tennessee State** have once again placed first in Tennessee's Miller Beer pickup contest. They ranked sixth in the nation in the contest.

In addition, the chapter also placed first in both tennis and softball for the second year and ranked third in the all-sports program.

Pick-up contest winners



United Way organizers

Idaho Alpha, along with the other fraternities and sororities at the **University of Idaho**, kicked off the United Way campaign in Moscow. Some 325 students began canvassing the Moscow area to distribute information and collect donations and pledges. This is the second year in which the campaign has begun in this fashion, with over \$4,000 being collected last year on opening day.

New York Alpha at **Cornell** was the host of the Province Nu fall meeting, held September 25 and 26. The chapter provided the facilities for the business sessions and organized a coffee house mixer, where they provided the entertainment.

T-shirts were given to all female guests. This is a unique rushing method which is designed to display the Σ A ϵ name throughout the campus.

One major item of business discussed was the plans for the 1977 National Convention which Province Nu will host this June in Philadelphia.

chapter eternal



John H. Baugh

Dean of Consultants Dies

Early Friday morning, December 10, 1976, John H. Baugh, Jr. passed quietly to the Chapter Eternal under the watchful eyes of his neighbors who had tended to his needs and made him comfortable around the clock during the preceding ten days. They were also there on Saturday afternoon to bid final farewell at services in the First Presbyterian Church and burial in the New Hope Cemetery. All of this in the small rural community of Meeker, Oklahoma.

It has been said that the two greatest legacies parents can give to their children are roots and wings. These gifts were given to John in large measure as he traveled the entire United States in services to Σ AE, without ever really leaving family and friends behind in his beloved community. His passing occurred in the home where he was born almost seventy-one years ago.

Following his graduation from Oklahoma State University, John taught school in a rural community near his home. Then it was back to Stillwater for more teaching, at the high school level, and a Masters Degree in history. It was at this point that World War II intervened. As an Army officer, he supervised tug boats and harbor craft at installations on the West Coast.

Initiated by Oklahoma Mu in 1931, as an alumnus of the successful petitioning Chi Beta local fraternity at Oklahoma State, his work began for that chapter

and never ceased. He was thus a logical candidate for the position of Assistant Chapter Consultant in the National Office when it became available at the conclusion of the War.

The truly remarkable record of service to Σ AE thus began in 1946 and officially ended with his retirement in June of 1971. But, in fact it continued with his election in 1971 as Honorary Eminent Supreme Archon, his receipt of the Distinguished Service Award in 1975 and his faithful attendance at Leadership Schools, missing only the 1976 session.

At the Leadership Schools over the years he was Pledge Trainer to hundreds. Visiting every chapter in the Fraternity, he knew their history, their character and personality, and their members; and they knew him. And throughout this time he maintained a truly amazing contact with brothers, friends he had made, and relatives of friends and brothers, in virtually every corner of our land. The constancy of travel can be lonely but it never was for John because his roots were firmly in Oklahoma but his out-reach was to all with whom he came in contact, and they responded to his embodiment of the ideals of friendship and Fraternity.

John is gone but his memory will live on in the minds and hearts of hundreds whose lives he has touched. His record of service would, for the normal person be sufficient, but for John Baugh, this uncommon man, his tribute will be the love, the care, and the deep personal concern that he freely gave for his fellow man. Σ AE was the vehicle that he used in his journey through life as teacher, counselor, and above all true friend.

ADRIAN (Mich. Alpha)

Wilbur F. Brittain, '08, of Steubenville, Ohio, on June 12, 1976.

ALABAMA (Mu)

Gail E. Goodloe, '31, of San Antonio, Texas, on December 28, 1975.

Wilmer S. Poynor, Jr., '32, of Birmingham Ala., on August 21, 1976.

John H. Williams Jr., '23, of Tuscaloosa, Ala., on October 4, 1976.

ALLEGHENY (Pa. Omega)

Dr. John F. Hartman, '29, of Erie, Pa., on October 10, 1976.

ARIZONA (Alpha)

George B. Houston, Jr., '34, of San Antonio, Texas, in July, 1976.

ARKANSAS (Alpha-Upsilon)

William E. Biggs, '40, of Proctor, Arkansas, on August 20, 1976.

Harry W. Bryan, '16, of Denver, Colo., on June 14, 1976.

Brice R. Smith, '24, of Kirkwood, Missouri, on October 12, 1976.

AUBURN (Ala. Alpha-Mu)

William J. Grant, Jr., '27, of Biloxi, Miss., on June 18, 1976.

BELOIT (Wis. Phi)

Stanley R. Sidie, '20, of Viroqua, Wisconsin, on October 29, 1976.

BIRMINGHAM-SOUTHERN (Ala. Iota)

Robert G. Kendal, Jr., '36, of Evergreen, Alabama, on July 17, 1976.

BOSTON (Mass. Beta-Upsilon)

Wallace R. Marden, '31, of Hingham, Mass., on September 14, 1976.

CALIFORNIA STATE-LONG BEACH (Lambda)

Richard A. Lang, '67, of Long Beach, Calif., on April 15, 1976.

CALIFORNIA STATE-LOS ANGELES (Mu)

Donald B. Farrow, '74, of South Pasadena, Calif., on August 22, 1976.

CASE WESTERN RESERVE (Ohio Rho)

Dario Domizi, '22, of Westlake, Ohio, on July 23, 1976.

Robert V. Emling, '56, of Erie, Pa., on October 2, 1976.

CENTRE (Ky. Kappa)

Charles A. Wade, '25, of Versailles, Kentucky, on November 14, 1976.

CINCINNATI (Ohio Epsilon)

Preston E. Garrison, '29, of Cincinnati, Ohio, on April 15, 1976.

T. J. Montgomery, '15, of Richardson, Texas, on November 11, 1975.

COLORADO (Chi)

William O. Garwood, '31, of Denver, Colorado, on November 8, 1976.

J. Harold Stout, '42, of Denver, Colorado, on October 21, 1976.

CORNELL (N.Y. Alpha)

Alfred J. Degreck, Jr., of Sarasota, Florida, on September 6, 1976.

CUMBERLAND (Tenn. Lambda)

D. Baxter Jackson, '36, of Corpus Christi, Texas, on October 3, 1976.

DARTMOUTH (N.H. Alpha)

J. Lee Bauscher, '21, of Reading, Pa., on March 18, 1976.

Erwin C. Miller, '20, of Worcester, Mass., in February, 1976.

Frank R. Senn, '27, of Pompano Beach, Florida, on March 16, 1976.

DAVIDSON (N.C. Theta)

Theodore D. Ravenel, '71, of Greensboro, N.C., on October 7, 1976.

DENVER (Colo. Zeta)

Dr. George P. Anderson, '18, of Denver, Colorado, on November 4, 1976.

C. Durand Smith, '73, of Grand Junction, Colorado, on July 30, 1976.

DICKINSON (Pa. Sigma-Phi)

Lewis V. Compton, '19, of Egg Harbor City, N.J., on July 16, 1976.

James M. Faulkner, '29, of Laurel Del., on September 23, 1976.

Thomas B. Miller, '13, of Wilkes Barre, Pa., on March 20, 1976.

Paul Rinaldi, '46, of Union, N.J., on January 27, 1976.

DRAKE (Iowa Delta)

Forrest E. Judd, '34, of Northridge, Calif., on April 19, 1976.

Edmund K. Koht, '17, of Laguna Hills, Calif., on June 6, 1976.

Clive G. Matthews, '32, of Corpus Christi, Texas, on September 27, 1976.

George W. Zender, '31, of Austin, Minn., on June 15, 1976.

DUKE (N.C. Nu)

George A. Smith, '35, of Gadsden, Alabama, on May 17, 1976.

FRANKLIN (Ind. Alpha)

Merle Walters, '25, of Indianapolis, Indiana, on February 9, 1976.

FURMAN (S.C. Phi)

Robert W. Hunter, Jr., '54, of Greenville, S.C., on June 8, 1976.

GEORGE WASHINGTON (W.C. Rho)

Frank C. Hale, '27, of Arlington, Virginia, on September 21, 1976.

Frank T. McGinnis, '41, of Idaho Falls, Idaho, on August 22, 1976.

GEORGIA TECH (Phi)

Royston Cabaniss, '10, of Pensacola, Florida, on February 7, 1976.

IDAHO (Alpha)

Alfred J. Eiguren, '66, of Boise, Idaho, on August 25, 1976.

ILLINOIS (Beta)

Fred L. McCune, '01, of Western Springs, Illinois, on July 1, 1976.

INDIANA (Gamma)

Charles M. Rottman, '13, of Alhambra, Calif., on June 11, 1976.

IOWA (Beta)

Dr. Dean M. Lierle, '18, of Iowa City, Iowa, on August 8, 1976.

Walter W. McKee, '22, of Pacific Palisades, Calif., on September 8, 1976.

IOWA STATE (Gamma)

Duane J. Chambers, '56, of Spencer, Iowa, on August 24, 1976.

G. M. Lambert, '09, of Homestead, Florida, on December 29, 1975.

Arnold W. Metz, '25, of Sioux City, Iowa, on June 30, 1976.

KANSAS STATE (Beta)

V. E. (Pete) Bates, '13, of Manhattan, Kansas, on October 5, 1976.

Edwin G. Cordts, '30, of Lake Jackson, Texas, on December 29, 1975.

Donald M. Diefendorf, '25, of Baton Rouge, La., on October 28, 1976.

Harold B. Keller, '38, of Upland Calif., on May 16, 1976.

KENTUCKY (Epsilon)

Newton W. Neel, '26, of Simpsonville, Kentucky, on November 4, 1976.

LOUISIANA STATE (Epsilon)

Paul J. Geddes, Jr., '35, of San Antonio, Texas, on April 27, 1976.

MASSACHUSETTS (Kappa)

Alan F. Flynn, '26, of Edgartown, Mass., on October 5, 1976.

MICHIGAN (Iota-Beta)

Col. Joseph R. Darnall (U.S. Army ret.), '16, of Austin, Texas, on August 24, 1976.

William K. Niemann, '17, of Sun City, Arizona, on October 4, 1976.

James W. Poling, '28, of Remsenburg, N.Y., on February 6, 1976.

MIAMI-OHIO (Tau)

Thomas K. Wenrick, '22, of Greenville, Ohio, on July 5, 1976.

MISSISSIPPI (Gamma)

William H. Montjoy, '28, of Greenwood, Miss., on October 14, 1976.

MONTANA STATE (Alpha)

V. Gage Lund, '24, of Oakland, Calif., on August 26, 1976.

Lawrence B. Lyall, '33, of Billings, Montana, in August, 1976.

NEBRASKA (Lambda-Pi)

Burton H. Sistek, '51, of Omaha, Nebraska, on October 9, 1976.

William A. Sizer, '05, of Tequesta, Florida, on April 5, 1976.

NEW HAMPSHIRE (Beta)

Edward C. Carrico, '38, of Port Washington, N.Y., on September 17, 1976.

NEW MEXICO STATE (Phi)

Stephen B. Curry, '77, of El Paso, Texas, on August 17, 1976.

Jerome D. Gay, Jr., '53, of Aztec, N.M., on July 3, 1976.

NORTH CAROLINA STATE (Alpha)

John M. Mallan, '71, of Hickory, N.C., on October 11, 1976.

NORTHWESTERN (Ill. Psi-Omega)

Robert J. Stewart, '45, of Chagrin Falls, Ohio, on May 15, 1976.

OHIO (Gamma)

Henry M. Burt, '57, of Southbridge, Mass., on May 29, 1976.

OHIO STATE (Theta)

Virgil N. Connor, '14, of Tampa, Florida, on September 17, 1976.

Leonard R. Growdon, '27, of Chillicothe, Ohio, on July 26, 1976.

John Pierce, '40, of Dallas, Texas, on November 8, 1976.

OHIO WESLEYAN (Delta)

William A. Briggs, '40, of Cleveland, Ohio, on April 5, 1976.

OKLAHOMA (Kappa)

Dr. J. Andrew Holley, '23, of Stillwater, Okla., on September 3, 1976.

OREGON (Beta)

Kenneth W. Moore, '23, of Los Gatos, Calif., on March 17, 1976.

OREGON STATE (Alpha)

Maynard E. Turner, '21, of San Gabriel, Calif., on June 14, 1976.

PENNSYLVANIA (Theta)

John D. Wright, Jr., '26, of Phoenix, Md., on September 2, 1976.

PITTSBURGH (Pa. Chi-Omicron)

Robert E. Grové, '14, of Pittsburgh, Pa., on March 30, 1976.

PURDUE (Ind. Beta)

Frederick J. Faust, '28, of Dallas, Texas, on March 4, 1976.

Col. Chester E. Lange, '32, of Indianapolis, Indiana, on September 25, 1976.

Howard H. Wikel, '18, of St. Petersburg, Florida, on June 27, 1976.

SOUTH, UNIVERSITY OF (Tenn. Omega)

Yetta G. Samford, III, '78, of Opelika, Alabama, on October 16, 1976.

Edward B. Schwing, Jr., of Plaquemine, La., on May 30, 1976.

SOUTH CAROLINA (Delta)

Purl B. Powell, '32, of Portsmouth, Virginia, on August 24, 1976.

James B. Urquhart, Jr., of Arlington, Virginia, on September 19, 1976.

SOUTHERN CALIFORNIA (Gamma)

Dr. Claude R. Weber, '27, of Laguna Hills, Calif., on June 1, 1976.

SAINT JOHNS (Md. Rho-Delta)

Bruce J. Edmonston, '41, of Baltimore, Md., on September 9, 1976.

SAINT LAWRENCE (N.Y. Rho)

Thomas Brescia, Jr., '65, of Mineola, New York, on February 9, 1976.

Francis E. Parker, '24, of Oxon Hill, Md., on August 26, 1976.

STANFORD (Calif. Alpha)

Noel E. Porter, '34, of Palo Alto, Calif., on October 1, 1976.

SYRACUSE (N.Y. Delta)

F. W. Abrams, '12, of Southold, New York, on July 17, 1976.

Harry B. Keegan, '12, of Skaneateles Falls, N.Y., on October 5, 1976.

Richard P. Mudge, '28, of Cortland, New York, on July 26, 1976.

Alton D. Platt, '22, of Brooklyn, New York, on October 5, 1976.

Gilbert E. Sandholzer, '32, of Lantana, Florida, on September 1, 1976.

TEXAS (Rho)

Henry J. Caulfield, II, '22, of Acton, Mass., on October 12, 1976.

Jesse F. McClendon, '03, of Norristown, Pa., on November 21, 1976.

TULANE (La. Tau-Upsilon)

John D. Henderson, '31, of Morristown, Tenn., on June 23, 1976.

UNION (Tenn. Eta)

William N. Porter, '28, of Sewanee, Tenn., on March 7, 1976.

UTAH STATE (Upsilon)

Fred B. Hodgson, '62, of Salt Lake City, Utah, on August 14, 1976.

VANDERBILT (Tenn. Nu)

George H. Tyne, '28, of Nashville, Tenn., on June 10, 1976.

Dr. John K. Walker, '27, of Pine Bluff, Arkansas, on October 24, 1976.

VIRGINIA (Omicron)

Macleon Marshall, '36, of Rome, Georgia, on October 21, 1976.

In Memoriam

Memorial gifts to The Levere Memorial Foundation are used to beautify and maintain The Levere Memorial Temple in Evanston, Ill., and to enlarge endowments for members' services such as student loans, tutorial assistance, libraries and others.

The Foundation and the Fraternity are grateful for the special contributions in remembrance of ΣAE Brothers and friends of ΣAE. Memorial contributions can be sent to Jack R. Hotaling, Secretary, The Levere Memorial Foundation, P.O. Box 1856, Evanston, Illinois 60204.

Contributions have recently been received in memory of:

John Baugh by Kenneth D. Tracey
 Talma W. Imlay by Richard C. Dinkelspiel
 Kenneth E. Oakley by Mrs. Kenneth E. Oakley
 Mr. & Mrs. Rex A. Smith
 Marie Ruhl by California Iota Alumni Association

PLEASE HELP US FIND THESE LOST MEMBERS

ALABAMA ALPHA-MU AUBURN

Adams Jr., Elton M., '29
Adams Jr., Richard J., '62
Allen, Harris M., '47
Allen, Theron S., '10
Allison Jr., Fred, '44
Ashmead Jr., Edward W., '45
Atkins, George H., '54
Avery, Roscoe T., '38
Baker, Ben F., '56
Barganier, James I., '69
Barker Jr., Frank M., '53
Barnes, Robert D., '68
Barnes Jr., William P., '30
Bigger, Richard M., '41
Blanton, Thomas R., '34
Boswell, Henry R., '35
Bowron, Jr., Harold A., '50
Brown Jr., John M., '64
Burford Jr., Jas L., '55
Burnett, Jerry I., '42
Burns, Sam '41
Camp, Warner H., '38
Campbell, Robert L., '60
Cargill, Thomas C., '43
Childress, Robert W., '39
Cloud Jr., Burt M., '66
Colmant Jr., George L., '48
Colvin Jr., George W., '55
Commander, Richard T., '45
Cooper, Arthur B., '52
Cotton Jr., James E., '59
Coykendall I., James B., '63
Crabtree Jr., Virgil F., '38
Craig, Aubrey W., '44
Crawford, Charles J. G., '72
Cullom, Shelby M., '07
Curtright Jr., William H., '58
Davenport, Richard M., '70
Davidson, John S., '68
De Bardelebe, Charles F., '20
DeBardeleben, Frank N., '51
Deming, John Winton '41
Derby, Evan A., '41
Dillard, Mason J., '21
Duncan, William P., '45
Dunn, Joseph E., '62
Egbert, Duane M., '24
Farrior, Alan S., '76
Findlay, John C., '35
Findlay, Wesley L., '36
Ford, Jones H., '47
Fountain, James A., '59
Frazer Jr., Stuart H., '48
Frizzle, William C., '63
Fuller Jr., Louis A., '49
Garrett Jr., Claude W., '30
Gay, Joseph F., '39
Gibson Jr., Sidney L., '36
Gillespy DD. Jr., John S., '13
Girardeau, Julian M., '44
Goodwin Jr., Robert E., '61
Gordon II., William W., '66
Graves, William E., '63
Green Jr., Alfred F., '43
Hagler, Robert E., '59
Hails, Robert E., '45
Hall, Donahue '58
Hall, Jernigan J., '61
Hamm Jr., James T., '57
Hans, John C., '44
Harbeson, Richard B., '38
Harris, Thomas K., '55
Hawkins, Andrew J., '41
Hayes, Carl D., '64
Hick, George E., '06
Hicks, George E., '06
Higdon, Thomas E., '61
Hix, Jerry C., '63
Hobson, Willis '46
Hotard, Gerard N., '68
Howard, Danny M., '73
Hubbard, Joseph W., '43
Hubbard, Mitchell T., '33
Hudnall, John B., '03
Hungerford Jr., Clark '49
Hyde Jr., Reuben L., '56
Ingram Jr., Thaddeus B., '32
Jackson Jr., Jesse M., '59
James, Donald R., '64
James, Louis W., '30
Johnson Jr., James G., '43

Johnston, E. Rhodes, '40
Johnston, William H., '37
Jones, Alexander S., '13
Jones Jr., Charles A., '44
Jones, Harold M., '51
Jones, Russell M., '72
Jones Jr., Stanley E., '51
Katona, Barry F., '64
Keene, Kurt L., '59
Kelley, Wilbur E., 1800
Kelly, Edward T., '65
Kendall, Henry A., '26
Kickliter Jr., James F., '22
Knight Jr., Harry E., '62
Kolb, Frazer W., '19
Kranzusch, James A., '67
Lancaster Jr., William L., '51
Larkin Jr., James S., '50
Lebron, Otto K., '24
Lee, William F., '37
Lewis, Harold, '13
Little, William L., '61
Long, T. H., '22
Lynch Jr., J. Arthur, '42
Madre Jr., Robert B., '54
Major, John P., '13
Major, S. M., '16
Mann, George P., '64
Mann, John P., '65
Marks, Charles P., '07
Matthews, Ralph M., '05
Maury, Lewis H., '34
McAuley, Hobart B., '14
McCaughey, George M., '53
McClary, Wallace F., '07
McCormick, Donald W., '50
McCrancy Jr., John W., '56
McCullohs, Hubert D., '48
McCullough, Donald L., '40
McDaniel, Danny K., '69
McGhee, Robert A., '31
McGough, Edward D., '42
McGowan Jr., William T., '26
McKey, Winston C., '10
McLaurine Jr., George M., '57
McLean, John C., '15
McNeill, Norman, '14
McRae, William B., '68
Meadows Jr., Robert T., '45
Meadows Jr., Walter L., '27
Means, Melvin H., '14
Meehan, Jeffery B., '69
Meredith, James C., '18
Miley, John D., '45
Moose, Jake B., '49
Morgan Jr., Charles, '40
Morgan, James C., '50
Morland, Alvin W., '37
Morris Jr., Leroy, '41
Morris, William N., '07
Morrison, Robert R., '61
Morrison, William F., '68
Motley III., Julien C., '46
Murrill, Dabney P., '46
Nail, Maison A., '26
Nelson, Fabez C., '03
Newman, Albert H., '04
Nichols Jr., De Owen, '36
Noble, Frank G., '33
Oakley, James B., '48
Owen, Robert H., '63
Parker, John W., '68
Parrish, James R., '55
Patton Jr., Beverly P., '47
Patton, Robert K., '69
Peacock, Robert D., '26
Pearce, David Y., '70
Peck Jr., Richard K., '43
Phillips, Louis C., '63
Phillips, W. P., '10
Pillans, Harry T., '07
Pool, Ben E., '68
Pope, William S., '34
Poundstone Jr., Robert E., '49
Powell, Dudley B., '53
Pruett, John C., '63
Putnam III., John G., '36
Reed Jr., Charles H., '05
Reese, Richard R., '34
Richardson, Jewett E., '22
Richmond Jr., William L., '63
Rizzo, Charles J., '67
Roberts, Harold R., '68
Robinson, Charles W., '57

Rollins, Joe, '48
Rosa Jr., Frank Y., '53
Roselle, Charles R., '70
Ross, John W., '64
Rush Jr., Rivers, '40
Rutledge Jr., Frank B., '39
Ryan Jr., William H., '43
Sayer, James L., '32
Scales, Myron B., '27
Scott Jr., John W., '43
Seawell III., Henry R., '74
Shannon Jr., Lester N., '42
Smith, Edward H., '07
Smith Jr., Henry G., '40
Stevens, William D., '56
Stewart, Albert G., '20
Street III., Oliver D., '46
Sullivan, John P., '19
Taylor, William G., '27
Tennent, John S., '18
Thomas, Truman A., '11
Thompson, John C., '68
Tranum Jr., Samuel E., '54
Tuttle, J. C., 0000
Ulrich, Raymond H., '56
Umbach, Richard E., '68
Vandiver, William R., '07
Vinson, Graham S., '21
Waddell, Charles B., '08
Wade, Donald C., '66
Walker, Herbert O., '55
Walker Jr., Lawrence W., '63
Walker, Richard I., '66
Waller III., Robert B., '35
Walter, William A., '59
Walton Jr., Ralph O., '51
Ward, Augustus A., '55
Warfield, Ralph H., '24
Warren Jr., Carl K., '36
Wasson, Rhodes T., '33
Watkins, Harold S., '18
Watson, Joseph M., '22
Watson, William E., '13
Weiss Jr., Henry J., '08
Whitaker, Van E., '27
White, Robert R., '37
Whitner, William C., '07
Williams, Alfred K., '46
Williams, Bruce J., '53
Williams, Guy W., '39
Williams, James S., '70
Williams, Jerald W., '66
Williams, Judkins B., '53
Williams, Nathaniel H., '27
Wilson Jr., Martin L., '47
Wingo, Thomas A., '41
Woodroff, Charles, '43
Word, Charles E., '45
Worthington, Joseph A., '19
Wright Jr., Edwin S., '34
Wynne, Andrew J., '17
Wynne, Eugene L., '21
Yarbrough, Oscar D., '22
Yarbrough, Richard D., '27
Yarbrough III., Rufus D., '63

ALABAMA IOTA BIRMINGHAM-SOUTHERN

Ainsworth, Malcolm D., '19
Arbery, William W., 1900
Ashlee, Robert M., '52
Baird, Philip W., '42
Basenberg, Joe E., '67
Best, Bertram B., '37
Brandon Jr., Frank W., '28
Brewton, Charles S., '36
Britt, Walter R., '28
Brown, Charles E., '57
Burchfield, Eugene N., '51
Burke, Patrick J., '56
Burns Jr., Harry A., '38
Captain Jr., Charles J., '57
Carter, George E., '19
Clark, Floyd W., '35
Coggin, John F., '59
Collier, Charles C., '69
Collier, William B., '75
Collins, Douglas, '43
Cox, Samuel C., '42
Crew, Raymond A., '24
Crim, John H., '27

Cromwell, Joe D., '32
Dobson, William K., '42
Dowda, Robert E., '63
Duncan Jr., William J., '26
Dunn Jr., Ernest M., '51
Dwiggins, Charles A., '38
Ellithorpe, Robert '52
Ferrell, John M., '64
Fowler, John L., '69
Gardner, Charles E., '59
George, William T., '63
Gillespy, Clarke H., '61
Graves, Harry J., '39
Green, Robert L., '24
Greene, Daniel R., '31
Grissom Jr., Wilburn L., '46
Hagan, Andrew H., '34
Hall, George M., '98
Hamilton Jr., John Wm., '32
Harris, Garrard, '37
Hayes, Gene O., '52
Howard, Donald M., '53
Howard, Nicolas L., '20
Hunter III., John A., '62
Jackson, Ervin, '23
Jennings, George O., '42
Jones, Emmett H., '57
Kelly, Charles M., '21
Kelly, James L., '18
Kibbey, Bill H., '47
King, Adger E., '18
Lahan, Joseph B., '26
Lasater Jr., Roy A., '40
Latimer Jr., William R., '39
Lawrence Jr., William O., '32
Leigh, Ted F., '33
Lide, Edward J., '44
Linden, Paul E., '58
Lofton, Todd K., '49
Lovelace, James H., '32
Luckey, Ronnie M., '65
Mabry, John B., '23
Malony, Henry N., '53
Maulden Jr., Freddie, '66
McClung, Richard K., '56
McDavid, Francis P., '49
McEniry Jr., William M., '36
McQuaig, Neil M., '21
Meade, Donald R., '49
Megill Jr., Henry C., '46
Mercer, James B., '56
Meyerord Jr., Edward B., '62
Mitchell, Herbert W., '57
Moody III., Dempsey W., '72
Moore, Robert E., '29
Mulvaney, Edgar J., '51
Nelson, Harry L., '66
Norton Jr., Ethelbert M., '45
O'Byrne, Donald F., '51
Palmer Jr., Gilbert S., '51
Parrow, James B., '32
Perry, Don A., '68
Phillips, Jack C., '60
Powers Jr., Philip E., '47
Prater, Jr., Harry W., '52
Preer Jr., Peter, '27
Ramsay Jr., Wayne K., '36
Ray, John H., '34
Reeves, Howard T., '51
Reynolds, Perrin C., '44
Richardson, Ellis C., '62
Riddle Jr., Samuel S., '38
Robinson, William A., '67
Russell, John H., '56
Ryan Jr., Thomas F., '42
Scokel III., Paul W., '49
Seay, Edward W., '11
Secor, Norman J., '69
Sellers, Calvin S., 1900
Sitz, Edwin M., '52
Skinner, George B., '04
Smaw, Morgan, '09
Stafford, Rufus E., '21
Stanford Jr., Shaffeur C., '62
Stead Jr., Eston H., '62
Stollenwerck, Amasa D., '03
Sullivan Jr., William J., '41
Swanburg, Fred A., '10
Taylor, John H., '98
Terry Jr., Vernon P., '38
Trawick, Ausburn K., '30
Tyler, Percy R., '29
Underwood II., Ferrel E., '71
Walton, Dan W., '55

Westenberger, John M., '62
Whittlesey, James T., '15
Williams, Frank L., '35
Williams, Kenneth C., '58
Womble, Hunter S., '57
Wood, Joseph B., 1890

ALABAMA MU ALABAMA

Allen, Bryant L., '50
Allen, Howard, '44
Allen III., Thomas W., '58
Anders, Joe D., '67
Anderson, Winston P., '42
Arrington, Harry B., '39
Ashurst IV., Robert T., '69
Austill, Evan, '57
Bagby, Charles P., '67
Beard, Robert B., '09
Bickley III., William G., '66
Birgin Jr., William B., '64
Black, Peter C., '15
Boyd, Robert B., '50
Brandon, William W., '54
Brantley, Joseph H., '48
Brantley Jr., William, '17
Brent, William T., '48
Brown, Joe A., '50
Brown Jr., Joseph A., '74
Burke, Edward C., '95
Campbell Jr., Stewart, '72
Cannon, Joe S., '68
Chiles III., James C., '66
Coleman, Brittin T., '64
Corley, Nolan B., '26
Crosby, George F., '42
Davis, Ronnie C., '63
Dorsey Jr., John T., '50
Dowling, Henry Z., '65
Emfinger, John H., '76
Eustis, George F., '20
Eustis, John G., '25
Ferguson, Forrest, '46
Flummer, John F., '39
Fowlkes III., Walter B., '50
Franks, Weldon H., '25
French, Herbert S., '58
Fulford, Robert C., '40
Garner, Thad B., '58
Giddens Jr., James F., '36
Gilder Jr., Herbert T., '54
Glass, John R., '36
Glenn, Joe H., '25
Gordon Jr., Jack A., '53
Greene, Charles H., '32
Griffin Jr., Raymond C., '70
Grimsley Jr., Alva M., '41
Groom Jr., Charles F., '54
Hale Jr., Ralph S., '39
Hall, James M., '40
Hamm, Kenneth Y., '66
Hanahan, Labruce M., '53
Harmon, Robert L., '26
Harrell, Charles A., '65
Hegenwald Jr., James F., '43
Henderson Jr., James D., '26
Herblin Jr., Leon B., '14
Herron, Clifford A., '51
Hicks Jr., Green W., '48
Hinson Jr., Evans, '60
Hobbie, Henry M., 1801
Hughes Jr., James F., '67
Hunter, Still, '61
Hutchison, Paul, '22
Hydinger, Richard J., '69
Janney Jr., George H., '23
Johnson, James G., '17
Johnston, David B., '74
Joyce Jr., William V., '33
Kagan, John C., '74
Key, John T., '22
Knight, James S., '50
La Bue Jr., John, '76
Lanier Jr., Clifford A., '58
Lastrapas Jr., J. Henry, '36
Lightfoot Jr., Philip M., '46
Lokey, Eugene S., '43
Maccartee, Allen G., '25
Mallory, William P., '50
May, Alexander J., 1897
McCants, John T., '03

- McCollum, Edgar P., '50
 McDowell, Harvey C., '29
 McDowell, Thomas F., '31
 Merrill, James W., '40
 Miller III, Hugh B., '57
 Miller, Jr., Hugh B., '32
 Miller, John S., '42
 Miller, Landon C., '67
 Minus, Edward N., '35
 Moss Jr., Clarence L., '50
 Moulton, William P., '25
 Newton, James C., '27
 Nicholls, William W., '35
 Nix, Robert H., '25
 Noble, James F., '03
 Noble, Mitelle F., '25
 Painter, William M., '44
 Parker Sr., Alexander M., '07
 Perry, William B., '23
 Pinson, William G., '22
 Plummer, John F., '39
 Porter, Charles T., '64
 Powell, Randolph P., '57
 Poyner, Dudley D., '11
 Price, Charles G., '48
 Price, Joseph H., '61
 Roberts, Thomas A., '68
 Rogers, Stephen C., '70
 Royer, Cecil W., '22
 Sellers, Charles E., '54
 Shamblin, William R., '58
 Shelton, Robert E., '50
 Sherer, Matson J., '46
 Sherlock, Eugene C., '54
 Simmons, Heber S., '29
 Smith, Pope B., '01
 Smith, Rittenhouse, '04
 Spottswood, Augustine D., '21
 Stacy Jr., Luther D., '61
 Steele, William C., '25
 Stephens Jr., Louie D., '37
 Stohart, James L., '50
 Sudbury Jr., John G., '29
 Tallichet, Julian C., '16
 Tallichet, Leo E., '1803
 Thagard Jr., Oliver L., '39
 Travis, Beale, '08
 Tyson, James J., '14
 Vann, Joseph W., '24
 West, Pleasant H., '52
 Wheelless, William E., '57
 White Jr., John M., '60
 White, Stanley S., '33
 Wilder, Richard B., '66
 Wilkinson III, Joseph E., '51
 Williams, Graybill E., '57
 Williams, John M., '55
 Wilson, Daniel C., '71
 Wright, John W., '22
- Drachman, Frank I., '29
 Drachman, Roger E., '55
 Draper, Michael R., '65
 Drolet, Wilfred C., '44
 Duffy, Joseph O., '54
 Dumelie, Lawrence G. H., '61
 Duncan, Michael F., '72
 Evans, Donald F., '58
 Fick, Daniel L., '70
 Fickas, William R., '47
 Fitzgerald, Michael J., '65
 Ford, Ralph J., '33
 Fowler Jr., Charles V., '35
 Franczy, William J., '53
 French Jr., George D., '39
 Fulton, John E., '57
 Gallagher, Dennis L., '63
 Gates Jr., Bernie D., '48
 Gentner, Brian H., '71
 Goodwin, Gordon A., '22
 Graham, Peter R., '62
 Gray, David '42
 Gray, Leon, '38
 Griffin, Fred, '48
 Grover, Gordon P., '59
 Hall, Robert L., '44
 Halstead, Gerald G., '63
 Hand, Richard G., '47
 Hargrave, Warren M., '35
 Harris, Leland B., '35
 Hess Jr., Lester C., '66
 Higgs, George B., '29
 Hlavac, John C., '74
 Hoag Jr., Hal W., '51
 Hock, Alan R., '75
 Hughes, Joseph H., '25
 Huss, Joseph V., '19
 Hussong, George W., '30
 Jacobsen, Jac J., '73
 Jennings Jr., J. Harry, 1900
 Joanou, George D., '56
 Johnson Jr., Donald E., '64
 Johnson, Gerald S., '52
 Johnson, James K., '39
 Johnson, John W., '48
 Johnson, Kenneth B., '51
 Jones, James M., '63
 Kaull, Jeffrey W., '68
 Kelly, James M., '66
 Kent, Tyler J., '69
 Kerr, Douglas M., '43
 Kerr Jr., Peyton A., '25
 Keyes, David T., '64
 Kimble, Stanley A., '30
 Kingsbury, William W., '23
 Kitchen, Bryson J., '54
 Lamothe, Charles J., '37
 Langston, Wiley J., '30
 Leahy, Clayton E., '48
 Leary, Paul E., '33
 Lewis, Ernest P., '55
 Loch, William Y., '37
 Low, John H., '70
 Mac Kinnon, Donald B., '52
 Macleod III, Murray, '62
 Madsen, James N., '52
 Mak, Dayton S., '39
 Marshall, Barton T., '58
 Mason, James K., '61
 Mathews, John H., '48
 McCain Jr., Murley M., '43
 McCormick, William P., '56
 McGowan, Charles R., '43
 Merritt Jr., Richard L., '58
 Mies, George M., '63
 Miller, Lowell W., '48
 Miller, Richard B., '46
 Morgan, Roger C., '58
 Morrison, Robert S., '50
 Moynihan, Gerard H., '68
 Mulvey, Edward R., '23
 Muncy, Alan N., '66
 Munns, Lamont H., '54
 Nelson, Frank O., '43
 Newberry, Frank M., '52
 Nielsen, Walter R., '39
 Osborn, James C., '36
 Paine, Wilson C., '67
 Pattee, Allan W., '37
 Peggs, Joseph G., '43
 Perkins, William E., '51
 Peterson, Gary K., '56
 Pollock, Michael L., 1958
 Procter Jr., Gilbert, '42
 Pullins, Perry L., '52
 Pyles, William B., '28
 Ray Jr., Thomas H., '67
 Redmond, Frank, '30
- Richmond, Dennis A., '61
 Robertson, Orrick C., '21
 Rogers, Andy, '36
 Rogge, Laurence E., '69
 Roodhouse, Lewis W., '37
 Ryder Jr., William E., '33
 Sanders, Richard E., '65
 Scofield, John Stephen, '67
 Sharp, Boyd F., '31
 Shehane, Barney A., '28
 Smith, Chad H., '59
 Smith, Faison H., '32
 Smith, Ned, '36
 Smith, Ray E., '24
 Smith Jr., Turner C., '51
 Smith, Wallace B., '37
 Soares, Lauro, '58
 Sporleder, Ernest B., '28
 Steen, William B., '69
 Taylor, Thomas Z., '56
 Tearney, Barney J., '70
 Temple, Robert A., '41
 Thomas, Alan B., '44
 Thompson, Stephen W., '69
 Thornton, E. Cole, '65
 Thornton, Victor C., '35
 Tollefson, Eric John, '68
 Toole, Kevin C., '69
 Townsend, Harold E., '62
 Trost, John Noel, '68
 Vance, Terry F., '65
 Vincent, Thomas B., '46
 Warnoch Jr., James F., '50
 Watson, William A., '34
 Weber, Ralf E., '19
 West, Kenneth D., '63
 Wetmore Jr., Charles B., '62
 Wheelwright, George W., '54
 Whittington, David B., '35
 Wilson Jr., Arthur H., '34
 Wright, Herbert F., '32
 Zepeda, R. Richard, '76
- Bowen, Louis M., '69
 Boyd, James S., '46
 Boydstone, James B., '56
 Brady Jr., Joseph G., '66
 Brewster Jr., Garland, '37
 Brians Jr., Roy E., '47
 Brodie, Philip H., '12
 Brown Jr., Joseph R., '13
 Brownfield, Jack D., '34
 Broyles Jr., John F., '70
 Buckley Jr., John O., '63
 Burkett, Jimmy, '60
 Burrow, Thomas E., '39
 Butler Jr., James H., '18
 Butler Jr., Norbert J., '59
 Carpenter, Warren L., '55
 Castleberry, Steven L., '61
 Chaffin Jr., Benjamin W., '49
 Chambers, Rodney K., '68
 Chaney, Donald P., '75
 Cherry, Claude W., '35
 Clement, William B., '65
 Clinton Jr., Roy A., '59
 Coan, John K., '62
 Coates, David B., '59
 Corbin, Donald L., '60
 Covey Jr., Robert E., '25
 Craigo, Richard W., '56
 Croom Jr., Cleveland W., '43
 Crow, King A., '71
 Darwin, James G., '55
 Davidson, William H., '38
 Davis, Jim C., '64
 Davis, Timothy E., '67
 Dew, Jim, '36
 Dickinson, John W., '25
 Dorsey, Joseph C., '52
 Dougherty, Phillip H., '47
 Dozier Jr., Edgar W., '58
 Dudley III, William C., '70
 Eadie, John W., '57
 Eason, William A., '69
 East, Jack, '22
 Eberle II, Walter G., '55
 Ellison, Luther F., '46
 Farrell, Joseph B., '47
 Few, Truman I., '30
 Fogg, Joseph E., '40
 Fuller III, Ira B., '62
 Furlong Jr., George M., '53
 Gammill, William R., '42
 Gause Jr., Joseph W., '49
 Gautney Jr., John F., '38
 Gentry, Harold L., '60
 Gilmore, George W., '38
 Glenn, Jack, '44
 Gorman, Lanny K., '63
 Green, Jerry D., '54
 Green, Johnny C., '66
 Greening, Orlando L., '37
 Greeson, Charles S., '64
 Griffith III, David L., '52
 Hackett, Shelby B., '57
 Harkey, James W., '45
 Harris, John C., '72
 Hawkins, Curtis W., '66
 Haynes, Robert M., '59
 Hendren, Michael C., '71
 Hitch, Carston, '51
 Holman, Freeman C., '31
 Hubbs, Robert B., '68
 Huff, William S., '57
 Hughey, John M., '64
 Illing, Leo M., '17
 Jeffers, Marshall A., '36
 Jett Jr., William A., '08
 Johnson, Raymond M., '51
 Jones, Jean, '46
 Jones, Kenneth G., '40
 Jones, Louis B., '42
 Jones, R. Earl, '27
 Jones, Ralph R., '06
 Kay, William M., '36
 Keisler, Ronnie S., '69
 Kelso, John M., 1897
 Kenney, James S., '16
 Kent, Septimus E., '23
 Kidd, Harland R., '22
 Kittrell Jr., Edwin N., '40
 Lacey Jr., Robert T., '25
 Lake, Howard, '36
 Lamkins Jr., Russell, '64
 Langston, Paul D., '58
 Lenker, Leslie E., '12
 Linebarier, Chester R., '50
 Linebarier, Orland T., '66
 Locke, William, '47
 Loflin, William A., '44
- Logsdon, Robert L., '51
 Long, Archie, '64
 Mac Luaghlin, James C., '54
 Mahle Jr., Jack D., '61
 Mann Jr., Albert H., '53
 Mardis, Paul L., '10
 Martin, Edward G., 1801
 Martin, Rufus A., '60
 Matlock, Bobby J., '62
 Matthews Jr., William A., '40
 Maxwell, Alfred J., '28
 Maxwell, James C., '22
 Mayer, Nicholas M., '57
 McAlester, Edward W., '03
 McBryde Jr., Edgar P., '41
 McClain, William C., '38
 McCullough, William G., '25
 McDougal Jr., James O., '39
 Chambers, Rodney K., '68
 Chaney, Donald P., '75
 Cherry, Claude W., '35
 Clement, William B., '65
 Clinton Jr., Roy A., '59
 Coan, John K., '62
 Coates, David B., '59
 Corbin, Donald L., '60
 Covey Jr., Robert E., '25
 Craigo, Richard W., '56
 Croom Jr., Cleveland W., '43
 Crow, King A., '71
 Darwin, James G., '55
 Davidson, William H., '38
 Davis, Jim C., '64
 Davis, Timothy E., '67
 Dew, Jim, '36
 Dickinson, John W., '25
 Dorsey, Joseph C., '52
 Dougherty, Phillip H., '47
 Dozier Jr., Edgar W., '58
 Dudley III, William C., '70
 Eadie, John W., '57
 Eason, William A., '69
 East, Jack, '22
 Eberle II, Walter G., '55
 Ellison, Luther F., '46
 Farrell, Joseph B., '47
 Few, Truman I., '30
 Fogg, Joseph E., '40
 Fuller III, Ira B., '62
 Furlong Jr., George M., '53
 Gammill, William R., '42
 Gause Jr., Joseph W., '49
 Gautney Jr., John F., '38
 Gentry, Harold L., '60
 Gilmore, George W., '38
 Glenn, Jack, '44
 Gorman, Lanny K., '63
 Green, Jerry D., '54
 Green, Johnny C., '66
 Greening, Orlando L., '37
 Greeson, Charles S., '64
 Griffith III, David L., '52
 Hackett, Shelby B., '57
 Harkey, James W., '45
 Harris, John C., '72
 Hawkins, Curtis W., '66
 Haynes, Robert M., '59
 Hendren, Michael C., '71
 Hitch, Carston, '51
 Holman, Freeman C., '31
 Hubbs, Robert B., '68
 Huff, William S., '57
 Hughey, John M., '64
 Illing, Leo M., '17
 Jeffers, Marshall A., '36
 Jett Jr., William A., '08
 Johnson, Raymond M., '51
 Jones, Jean, '46
 Jones, Kenneth G., '40
 Jones, Louis B., '42
 Jones, R. Earl, '27
 Jones, Ralph R., '06
 Kay, William M., '36
 Keisler, Ronnie S., '69
 Kelso, John M., 1897
 Kenney, James S., '16
 Kent, Septimus E., '23
 Kidd, Harland R., '22
 Kittrell Jr., Edwin N., '40
 Lacey Jr., Robert T., '25
 Lake, Howard, '36
 Lamkins Jr., Russell, '64
 Langston, Paul D., '58
 Lenker, Leslie E., '12
 Linebarier, Chester R., '50
 Linebarier, Orland T., '66
 Locke, William, '47
 Loflin, William A., '44
- Long, Archie, '64
 Mac Luaghlin, James C., '54
 Mahle Jr., Jack D., '61
 Mann Jr., Albert H., '53
 Mardis, Paul L., '10
 Martin, Edward G., 1801
 Martin, Rufus A., '60
 Matlock, Bobby J., '62
 Matthews Jr., William A., '40
 Maxwell, Alfred J., '28
 Maxwell, James C., '22
 Mayer, Nicholas M., '57
 McAlester, Edward W., '03
 McBryde Jr., Edgar P., '41
 McClain, William C., '38
 McCullough, William G., '25
 McDougal Jr., James O., '39
 Chambers, Rodney K., '68
 Chaney, Donald P., '75
 Cherry, Claude W., '35
 Clement, William B., '65
 Clinton Jr., Roy A., '59
 Coan, John K., '62
 Coates, David B., '59
 Corbin, Donald L., '60
 Covey Jr., Robert E., '25
 Craigo, Richard W., '56
 Croom Jr., Cleveland W., '43
 Crow, King A., '71
 Darwin, James G., '55
 Davidson, William H., '38
 Davis, Jim C., '64
 Davis, Timothy E., '67
 Dew, Jim, '36
 Dickinson, John W., '25
 Dorsey, Joseph C., '52
 Dougherty, Phillip H., '47
 Dozier Jr., Edgar W., '58
 Dudley III, William C., '70
 Eadie, John W., '57
 Eason, William A., '69
 East, Jack, '22
 Eberle II, Walter G., '55
 Ellison, Luther F., '46
 Farrell, Joseph B., '47
 Few, Truman I., '30
 Fogg, Joseph E., '40
 Fuller III, Ira B., '62
 Furlong Jr., George M., '53
 Gammill, William R., '42
 Gause Jr., Joseph W., '49
 Gautney Jr., John F., '38
 Gentry, Harold L., '60
 Gilmore, George W., '38
 Glenn, Jack, '44
 Gorman, Lanny K., '63
 Green, Jerry D., '54
 Green, Johnny C., '66
 Greening, Orlando L., '37
 Greeson, Charles S., '64
 Griffith III, David L., '52
 Hackett, Shelby B., '57
 Harkey, James W., '45
 Harris, John C., '72
 Hawkins, Curtis W., '66
 Haynes, Robert M., '59
 Hendren, Michael C., '71
 Hitch, Carston, '51
 Holman, Freeman C., '31
 Hubbs, Robert B., '68
 Huff, William S., '57
 Hughey, John M., '64
 Illing, Leo M., '17
 Jeffers, Marshall A., '36
 Jett Jr., William A., '08
 Johnson, Raymond M., '51
 Jones, Jean, '46
 Jones, Kenneth G., '40
 Jones, Louis B., '42
 Jones, R. Earl, '27
 Jones, Ralph R., '06
 Kay, William M., '36
 Keisler, Ronnie S., '69
 Kelso, John M., 1897
 Kenney, James S., '16
 Kent, Septimus E., '23
 Kidd, Harland R., '22
 Kittrell Jr., Edwin N., '40
 Lacey Jr., Robert T., '25
 Lake, Howard, '36
 Lamkins Jr., Russell, '64
 Langston, Paul D., '58
 Lenker, Leslie E., '12
 Linebarier, Chester R., '50
 Linebarier, Orland T., '66
 Locke, William, '47
 Loflin, William A., '44
- Miles Jr., Vincent M., '37
 Milford, Clinton G., '10
 Moon, Charles R., '23
 Moore, George W., '33
 Moore, Howard N., '42
 Moore, Robert H., '56
 Morrow, Donald B., '05
 Muller, James F., '03
 Murphy Jr., H. B., '53
 Nash, John D., 1895
 Neely, William S., 1800
 Nichols, Robert A., '71
 Norris, Douglas E., '58
 Northern Jr., Dalton L., '69
 Northington, Gene A., '44
 Norwood, William L., '63
 Nutt, Victor L., '57
 Osborne II, Thomas S., '46
 Palmer, Thomas S., '69
 Pape, F. D., '17
 Parker, Jerry G., '59
 Paslay, Robert C., '21
 Pattillo, John G., '47
 Patton Jr., Jim F., '62
 Payne, Herschel M., '50
 Percival Jr., James M., '11
 Perry, Stuart E., '58
 Peterson, Larry L., '57
 Phillips, David H., '58
 Pollard, Billy '50
 Porter Jr., William F., '37
 Raedels III, Fred S., '58
 Ray Jr., James M., '55
 Reeves, James A., '50
 Reeves, William L., '50
 Reid, Charles W., '05
 Riley, Ray A., '58
 Rowe, Robert J., '22
 Rye, John G., '55
 Sadler, Ashton G., '27
 Sanders, Ross W., '55
 Sanders, Thomas E., '01
 Secrest Jr., Robert Y., '28
 Shepherd, William T., '45
 Sheppard, Louis C., '56
 Shofner, Harvey D., '47
 Sims, Harry B., '26
 Singleton, Hamilton H., '71
 Skinner, Bernice J., '13
 Smith Jr., William L., '38
 Spence, Larry R., '64
 Spencer, George H., '25
 Spikes, William R., '62
 Stark, William H., '07
 Stockburger, Floyd H., '23
 Stockburger, Robert R., '14
 Stone, Fred W., '70
 Terry, Francis A., '09
 Thomas, Glenn E., '57
 Thompson, Thomas A., '69
 Tufts, Jack M., '31
 Van Sickle, Ernest S., '31
 Vick, Jr., Neil D., '64
 Waddy Jr., David S., '32
 Welch, Charles M., '26
 White, Frank B., '44
 White, John A., '51
 Whitthorne, Samuel N., '42
 Williamson, Walter E., '64
 Wilson, C. Penn, '38
 Winfree, Oscar M., '14
 Witty, Roy E., '23
 Womack, Harry E., '15

**ARIZONA BETA
 ARIZONA STATE**

- Abert, Dennis M., '67
 Andrews, Robert B., '67
 Bailey, Thomas D., '62
 Banks Jr., Wilson H., '66
 Bogert, Ross A., '68
 Brannen, Lindsay E., '74
 Buckles, Jerry C., '67
 Burke, Dennis M., '70
 Campbell, Bruce G., '73
 Canis Jr., Pye D., '66
 Churchill, Robert Lee, '70
 Coffin, James R., '67
 Cosgrove, Jack A., '67
 Dana, Mark K., '73
 De Ninno, Richard M., '70
 Elliot, Thomas C., '69
 Evans, Ronald A., '62
 Everett Jr., Carl N., '72
 Fitzmaurice, David J., '71
 Ford, Buck L., '75
 Freedman, David '67
 Gallagher, Michael L., '66
 Ghaster, Gregory R., '71
 Greer, Alan K., '68
 Hayman, Stephen L., '68
 Hode, William, '65

**ARKANSAS ALPHA-UPSILON
 ARKANSAS**

- Adkins, Robert C., '59
 Argo, Warren B., '61
 Arnold Jr., Hendrick J., '41
 Askew, Jess L., '30
 Askew Jr., John A., '30
 Baber, Gary P., '61
 Baber, Jerry W., '62
 Baber, Thomas D., '70
 Baker III, Johnson J., '59
 Barnhill, John G., '69
 Bayne, Loui G., '48
 Beard, William A., '48
 Beasley, Sidney M., '54
 Beith, Davis R., '66
 Bell, Randolph M., '67
 Bemis, Andrew H., '69
 Bentz, John L., 1899
 Berry, Paul C., '61
 Bond Jr., Sidney D., '39
 Booth, Donald L., '63

WHEN WE CAME UP FROM DIXIE LAND

Edited by Joseph W. Walt

VIII

FRATERNITY LEADERSHIP IN EMBRYO

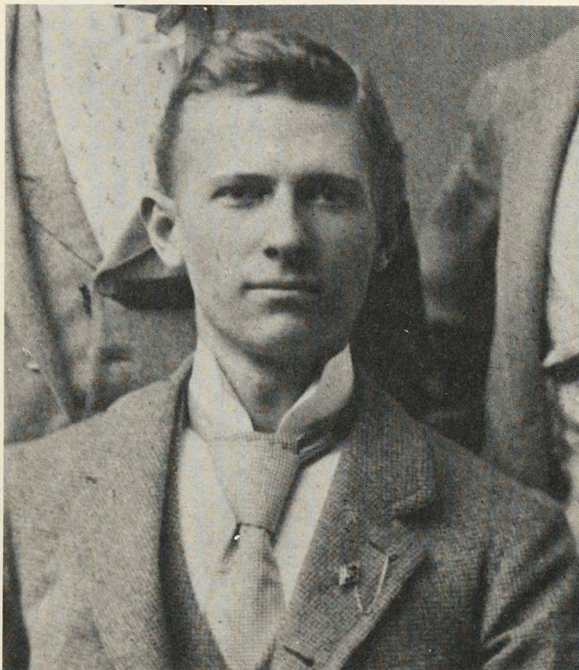
GEORGE BUNTING, fourth of the brothers, as a bright-eyed, snappy, imaginative youngster of fourteen, was everywhere and knew everybody in the college community. His visits were always welcome. He soon came to know the membership of each fraternity, to watch their maneuvers with an eagle-eye and seemed to know just the men each chapter was rushing. He would come home and give a tip like this: "ATQ is rushing Brown—I saw 'em set him up to soda water—if you fellows want him, you better go get him." In this way the kid brother sometimes brought intelligence or gave warnings quite helpful to our chapter.

While active in sports, Georgie would quit boys of his own age almost any time if he could hang around his brothers and listen to their talk about college matters or fraternity interests. Once in a while he would become so interested as to forget his youth and butt in with a wise-crack or offer sage counsel. We never

knew the time when George was too young to counsel his brothers seriously or give admonitions or cautions worthy of a father. He was especially good, even in that callow age, at cautioning his elders against "loose expenditures," yet he himself always was the soul of generosity; he would give his last shirt to a brother or to Minerva, and whenever he set out to do any worthwhile thing, cost was the last item he thought about.

As George was often to be called on to skate on thin ice for his fraternity, a quality in the lad early showed that he would know how to bluff on occasion. His first show of self-reliance that I recall was at Sunday School. He was supposed to recite a verse from Scripture which he had forgotten to provide. Not abashed he extemporized this one: "And Moses came out of the woods!" A better improvisation was when called on to give the commandment on chastity at the age of seven. His rendition was: "Thou shalt not—thou shalt not—thou shalt not committum philadelphium." George had a lot of humor, became an entertaining debater as a freshman, often interspersing seriousness with witticisms, at other times excelling in a sort of dry humor that seemed unconscious. One day in college he found himself unprepared for Latin and, expecting to be called on, prudently took a pony to class. He was called on to translate and the light was not good. He was rendering the interlinear with confidence but floored the class when he read feelingly: "Oh, Varus! Varus! Bring me back my leg-gins!" The Latin shark will know, of course, that the Roman Emperor was sighing for the return of his destroyed legions.¹

Since George heard so much fraternity talk as a growing lad it was quite natural that ΣAE interests became his second nature. Fraternity correspondence and editorial work rather took precedence over college studies in our home—at least, not infrequently they were attended to first. George naturally took to reading *The Record* as the very first print that engaged his attention outside of school books. He soon came to know ΣAE's roster of chapters by name. He



Left: George Bunting, youngest member of the quartet of brothers, ranked next to Harry in service to ΣAE.

learned the Greek alphabet without trying to—he simply absorbed it. He early formed the habit of reading the extensive correspondence that Brother Billy and I were having with other fraternity workers. Thus, in a very practical way, the boy at fourteen was already a fraternity worker in embryo.

By fifteen George became a devoted reader of all the Greek-letter "Exchanges" which I obtained through my editorial connection with *The Record*. He had studied over the new ΣAE General History which appeared two years earlier until he knew every chapter of the fraternity, living and dead, and the names of many of their members.² He read *Baird's Manual* continually, and it is scarcely an exaggeration to say that by the time he entered college at sixteen George knew Baird by heart. He certainly was a shark on Panhellenic history and information generally and retained this intimate grip on the college fraternity system all through life.

With this aptitude for and knowledge of fraternity matters, George stepped up naturally into the place vacated by Brother Billy as soon as he and Frank graduated and went to live at Florence, Alabama. As the twins had always been one unit, so George and I formed another. Our father put George into my arms to hold for a moment the day he was born—gave him to me, as he said—my earliest recollection—and we grew up together. I dropped back a step to wait for George and he stepped ahead precociously to equalize the four years' difference in our ages. We held everything in common—property, play, ambitions, enthusiasms. It was in the natural course of things, then, that George had become my understudy in fraternity work, as I had been Billy's; and when the older boys went out into life, he qualified as my under-secretary. So the hum of the fraternity mill went on unabated.

It must have been unique in fraternity annals that a boy so young and not yet in college should qualify himself in this way with knowledge of and interest in Panhellenic matters. Georgie certainly was—potentially, at least—a fraternity man to my liking, and his reciprocation of my ardor and visions was a real and continuing factor in my own fraternity development. We went on growing up together in ΣAE work, just as we had always pooled all our other interests and happiness.

Came my senior year with September, 1890, and George at sixteen entering college. With what impatience we had awaited that day. What anticipations we indulged of the moment, now imminent in our expectation, when George would be led across the mystic threshold of Tennessee Zeta. Alas, that was not to be! Betrayal was to bar the way and malice to strike its dagger deeply to the heart of both of us. While my brother was regarded by all fraternities as one of the prize catches of the year and everybody was expecting that he would be initiated by ΣAE as soon as college opened, two certain seniors of our chapter, who owed their introduction into the fraternity wholly to the efforts of the Bunting boys, filled with low envy at my primacy in the chapter and apparent usefulness to

the national fraternity, conceived that it would be a merry jest to block George from becoming an ΣAE: so they formed a cabal to blackball him. They had no doubt that George would be stung by humiliation and resentment into joining another fraternity. The

**SOUTHWESTERN
PRESBYTERIAN * UNIVERSITY.**

CLARKSVILLE, TENN., *April 4* 1891.

Report of the standing of Mr. *H. B. Bunting,*
for the month ending *March 4.*

DEPARTMENTS.	Absences		REMARKS.
	Excused.	Unexcused.	
Latin			
Greek			
Mathematics			
Higher Arithmetic			
<i>Book-keeping.</i> <i>See Nat. Phil.</i>			<i>Very Good</i>
<i>Jr.</i> Natural Philosophy			<i>Very Good</i>
Chemistry			<i>Very Good</i>
Geology, etc			
Mental Philosophy			
Logic			
Ethics			
Political Economy and Science of Gov't			<i>Very Good</i>
French			
German			<i>Excellent</i>
General History	<i>2</i>	<i>Good</i>	<i>Good</i>
English Literature	<i>2</i>	<i>Excellent</i>	<i>Excellent</i>
Rhetoric, Elocution and Composition	<i>1 twice late</i>		<i>Very Good</i>
Declamation			<i>Excellent</i>
Bible Course			
Hebrew			
New Testament Greek			
Homiletic Theology			
Systematic Theology			
Practical Theology			
Ecclesiastical History			
Church Polity			
Biblical History			
Attendance at Church			
Attendance at Chapel		<i>7</i>	<i>Unsatisfactory</i>
Attendance at Sunday Bible Class		<i>3</i>	
General Department			<i>Excellent</i>

C. C. Hensman, Chancellor.

Harry's "report card" from Southwestern Presbyterian University in the spring of 1891. Most of his work was marked "Very Good" or "Excellent" with the glaring exception of Chapel Attendance which was marked "Unsatisfactory."

feelings of George's father and three brothers, of the boy himself, as well as the ardent wishes of every other member of the chapter and the best interests of Minerva meant nothing to this pair. Fraternity law and polity were quite undeveloped in that day, the chapter had no precedents to guide her, and her leadership was unequal to cope with such an embarrassment. There were those in the chapter who wanted to put these two men on trial for expulsion. They appealed to me for advice. As these men would not be back in college next year and since George would return, as far as could be foreseen, I advised that a chapter scandal be averted and the matter be passed over in silence. George and I preferred disappointment and temporary sacrifice to jeopardizing the fine position that ΣAE had now won at Southwestern.

Gallatin, Tenn
Wed. afternoon

Dear Boys. No word yet of money
rec'd sent last week. That is a
bit tricky. Enclose Reports. It's
a shame & reproach you boys don't
get to prayers. It seems to me your
pride for yourselves & respect for me
would change this matter. What is
the trouble? Does not yr. Landis, y
get yr. brief in time or or you late
in getting up & orkpt? Whose fault is
it? If it's yr. Landis please ask her
to hurry up - its doing you a gr. injustice
in yr. standing in the University. If
course it acts down a boys general
share doing. Let me know if its late briefs
& I shall so inform Dr. H. If its your
own laziness & putting - then up as you
must drop the reproach - for it is a
reproach. Please let me know at
once. You will see Dr. H. will be
up next week. He will drop you a
postal when to look for him.
Nothing new here - all will

Harry's poor attendance at chapel earned him a scolding letter from his father, then serving as a Presbyterian minister at Gallatin, Tenn.

Realization that we were not to share the fun of being together in the meetings of old Zeta was a bitter cup; but then, had we not already drunk deeply of fraternal fellowship in a wonderful way that only the elect could know? I took comfort in the confidence that George would yet be a figure in Σ AE councils, after these ingrates were forgotten. When other fraternities realized that something was wrong, each made overtures to George, but he turned them aside diplomatically and the mystery went unexplained.

The episode passed and did not so much as spoil our partnership enthusiasms. I had been able to revive three neighboring dead chapters in previous school years, those at Union University, Bethel College and the University of Tennessee—and now George and I were to experience the pleasure of driving a wedge into the Rocky Mountain region by putting Σ AE into the University of Colorado—wholly by correspondence. With such thrills as this coming our way, we found happiness in Minerva's opportunities and wasted no time over temporary defeat.

Late one afternoon toward the last of April I was summoned hastily to a called meeting of the chapter. The brother who found me did not know what the trouble was. I rushed the steep stairs to the third floor hall in the castellated Norman tower of old South-

western and felt surprised to find the hall darkened and candles lit, on entering. I was hustled to a front seat and in the subdued light could see at once that all eyes were looking toward me. Before the mystery was dispelled, the voices of the Eminent Warden and Eminent Herald rang through the hall, and at the words "Let the candidate enter," Brother George walked through the door!

It was one of the emotional tests of my life. I broke down and cried—as I confess the impulse to do comes to me again now that I recall the memory of that happy moment of boyhood, more than forty years ago.

Only two or three perfunctory meetings of Tennessee Zeta took place after the initiation of George, as chapter life for that year was then practically over. Everybody was busy with reviews and examinations, drilling for oratorical contests or athletic training as field day then took place just before commencement. The year closed happily for the fraternity and we received our full share of honors. George won the mile race and Σ AE won 80 per cent of the events on Field Day. Frederick R. Graves, one of our boys, won the joint society oratorical medal. Robert B. McCallie won the Bible Medal. William T. Stokely won the disclaimer's medal. John M. Mecklin was elevated to the faculty. The benediction which closed commencement exercises was pronounced by our father, the Rev. Dr. R. F. Bunting. Life looked bright and full of hope for all of us. I went out from Alma Mater happy in the thought that Tennessee Zeta chapter would be in safe hands next fall with Brother George returning to steer things.

A week after Southwestern reopened that fall occurred the sudden death of our father.³ He was taken without previous illness. George's college life ended at the age of seventeen when his feet but touched the threshold of his sophomore year. He entered a commercial school in Nashville and gave ninety days to the rudiments of bookkeeping. He adopted a policy in Nashville that he was to follow all through life, that of working for Σ AE wherever he happened to be. You could trace the course of George's life by listing his accomplishments for Minerva. Wherever he went the fraternity has abiding cause to remember that George Bunting once passed that way. □

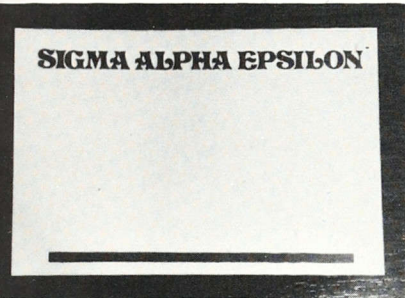
Notes:

¹ A "pony," to those uninitiated in the trials of schoolboy Latin study, was a published English translation of the Latin original. It was handy to have around when one was called upon in class to translate a passage of Latin. The ultimate pony, for the consummate college Latin scholar, was an inter-linear translation, a precious volume secreted by a boy (girls, more dutiful, seldom used ponies) in such a way as to be available for instant consultation while remaining unseen by the professor.

² This "ΣAE General History" was but a nine-page sketch written by W. A. Guerry, an alumnus of the Sewanee chapter. It appeared in the 1886 edition of the *Catalogue of Sigma Alpha Epsilon*, published at Atlanta, Ga., in 1887.

³ Dr. Bunting died September 19, 1891, at Lebanon, Tenn., at the age of 63.

MERCHANDISE FOR RUSH



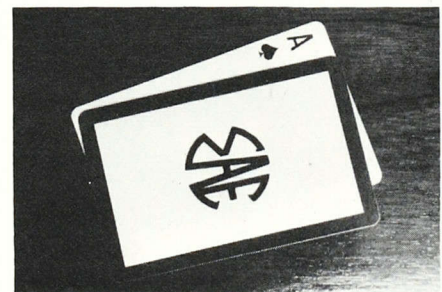
Nametags are essential during rush parties and other social events. A set of 100 can be obtained through the National Office for \$3.50.

Boxes of SAE monogrammed matches are available by the hundred for only \$4.00 per box.



Everyone uses glasses during rush, so instead of plain plastic tumblers, order your personalized SAE glasses today. \$1.50 per 50.

A game of bridge is a relaxing way to spend time with a rushee. Use SAE monogram cards during your game. \$2.50 per deck.



**ALL ORDERS SHOULD BE SENT TO:
MERCHANDISE SALES
SIGMA ALPHA EPSILON
P.O. BOX 1856
EVANSTON, ILL. 60204**

A great Chapter depends upon the involvement of its Brothers in the support of Chapter programs — whether it be community service or Founders' Day.

A great Fraternity depends upon the involvement of its Brothers in the support of Fraternity programs.

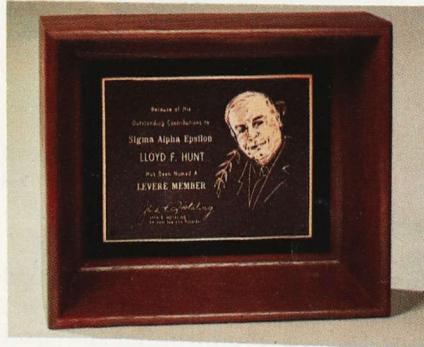
Sigma Alpha Epsilon Fraternity
Leadership Schools
Chapter Management
Alumni Programming
Chapter House Loans
Community Service

The Levere Memorial Foundation
Student Loans
Tutor-in-Residence
Chapter Library Program
Community Service Recognition
Scholarship and Career Planning

Every contribution furthers Fraternity and Foundation programs. With your gift, we will meet our goal. Support the Fraternity and the Foundation. Every one counts.



Founder Member \$1000



Levere Member \$500



Moseley Member \$250

Your contribution accrues toward Founder, Levere, Moseley, and Century membership.

EVERY
ONE
COUNTS

Make checks payable to:
Sigma Alpha Epsilon
P.O. Box 1856
Evanston, IL 60204

The Record of Sigma Alpha Epsilon
P.O. Box 1856, Evanston, Ill. 60204
Postmaster: Please send notice of Undeliverable
copies on Form 3579 to above address.

Second class postage paid at Evanston, Ill.
and at additional mailing offices.