

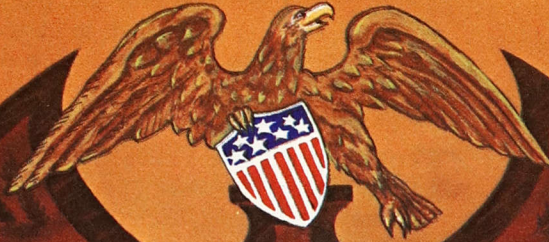
the Record

OF SIGMA ALPHA EPSILON

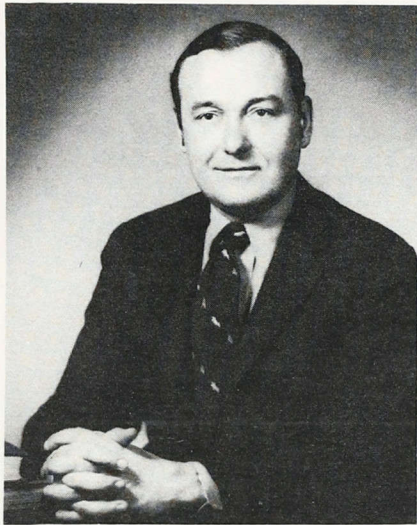
MAY 1977

VOLUME 97

NUMBER 2



SIGMA ALPHA EPSILON
CONVENES
IN PHILLY



ESA Russell P. Heuer

a
message
from the
ESA

TIME PASSES all too quickly. It is difficult to realize that I will have been a member of the Supreme Council for ten years when our Convention meets next month in Philadelphia. That realization—more of the creeping than the thunderbolt variety—causes me to pause and reflect on those years and an involvement in an activity that has enormous rewards. It makes me want to say to others that they too should give to Σ AE, be that time, money or the talent that they can bring to promoting the development of a sound experience for our undergraduate brothers. The rewards are worth the effort.

And now a word about the Convention. By now those of you planning to attend should have your arrangements made. For those of you on-the-fence, decide now; it will be a great Σ AE experience. The dates are June 19 to 21 and the headquarters hotel is the Benjamin Franklin in downtown Philadelphia. The theme of the Convention is "From Philadelphia to the Future" and this represents the introspection that always occurs at a gathering of this type; a careful look at where we have been, where we are now, and what can be expected in the future. Such a look is vital to the Fraternity and is quite enjoyable as well.

Σ AE takes some particular pride in the fact that the great majority of the delegates to a Convention are undergraduates. It is our feeling that the proper direction for the Fraternity can best be established by those who are most intimately involved. An acceptance of this responsibility by our student members has always been great and this tends to support the contention that we are truly a very democratic organization. The decisions that will be made in Philadelphia will be the right ones because they will be well thought out and will have a dynamic thrust from those who are on the front lines of Fraternity affairs.

It will be a good Convention and Σ AE will continue to prosper. I leave my position on your Supreme Council with comfort and with optimism, and naturally with some regret. However, that is the nature of things. Organizations need changes in leadership in order to constantly renew themselves. My confidence comes from an awareness of the capability of the new leadership to follow and from an abiding belief in the viability of Σ AE to rise to all circumstances. We are a Fraternity with enormous potential for greatness!

Russ Heuer

From the Editor

One of the real pleasures of getting out *The Record* is working with our many contributors. Among these one of our favorites is young Dwayne Foster, Southern California '76, who provides the cover for this issue. An able cartoonist, Dwayne is on his way to becoming a first-rate illustrator. Talent and hard work are an unbeatable combination.

In our main feature on the following pages we take a careful look at the province, the regional unit of ΣAE organization. Too often the step-child of the fraternity, the province bids fair to become a vital center of activity and accomplishment.

It is only appropriate that we allow many brothers who have written to us about Rex A. Smith and John H. Baugh to express their feelings about the passing of these two ΣAE greats. The few pages we devote to an "In Memoriam" can only begin to remind us of the debt we owe to these men.



Another debt we owe is one of thanks to the brothers of Calif. E at Occidental College. A photograph (above) which appeared in the May, 1976, Bicentennial Edition of *The Record* and on our November cover is probably the best ever published in our journal. It was made at 6 o'clock A.M., November, 1971, by a group of sleepy Calif. E undergraduates. The wooden " ΣAE " structure was constructed by A. Daniel Panella '73, Brent Whittlesey '73 and his sister, Ann. The photographer was Steve Spiller '72 and the brothers in the picture, l. to r., are Panella, John Newell '73, Peter Van Houten '73, and Billy Sparks '73.

PUBLISHED CONTINUOUSLY SINCE 1880

Joseph W. Walt, Editor

Barbara D. Searle, Editorial Assistant

CIRCULATION 65,000

Second class postage paid at Evanston, Ill., and at additional mailing offices.

Send address changes to P.O. Box 1856, Evanston, Ill. 60204.

Published quarterly by Sigma Alpha Epsilon, 1856 Sheridan Road, Evanston, Ill.

Notice of Change of address (Form 3579) should be sent to Sigma Alpha Epsilon, P.O. Box 1856, Evanston, Ill. 60204.

Printed by the George Banta Company, Menasha, Wis. 54952.

theRecord

OF SIGMA ALPHA EPSILON

MAY 1977 ■ VOLUME 97 ■ NUMBER 2

Contents

The Province: Vital Grass-Roots Government, Useless Fragmentation, or Obstructionist Regionalism?	30
Hail and Farewell: ΣAE Loses John Baugh and Rex Smith	34
The Leadership School: Leadership, New Ideas, and Brotherhood	37
Helping ΣAE s Find a Job: Career Weekends and the Lendman Associates	38
When We Came Up From Dixieland: The ΣAE Memoirs of Harry Bunting, VII and VIII	54

Departments

ΣAE -GRAM: Last-minute flash news about ΣAE , the Greek World, and the campuses of the nation	33
Alumni Notes	39
Chapter News	45
Chapter Eternal	47
Mini-Directory	50
Lost Alumni File	52

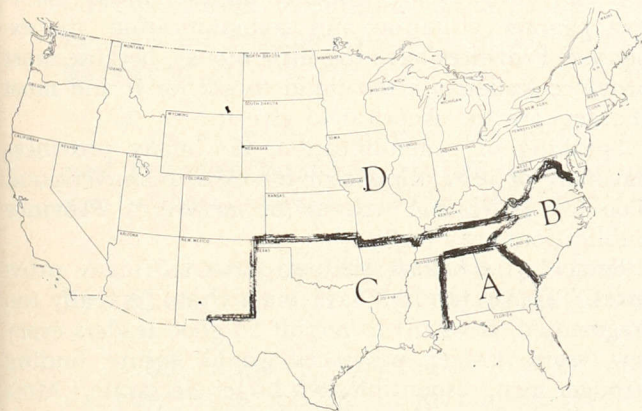
and fairly crackling with innovative ideas. All of them are in the midst of great change or are on the verge of it, whether they know it or not.

Our provinces are where the action is going to be during the next decade. This will happen because new life, new purpose, new functions, new reasons for existence are beginning to be felt by province leaders, alumni and undergraduates throughout the fraternity. It will happen, too, because we live in a day when decentralization—and with it greater democratization—is an idea whose time has come.

It has taken nearly a century for ΣAE to find out what provinces are good for. And in many parts of the country we are still in the midst of the process of discovery.

THE beginnings of our provinces were hardly auspicious. They were first created at the Nashville National Convention of 1885, when the fraternity adopted the Supreme Council system of government. Provinces were intended to serve as second-level, regional units of fraternity governance. Six provinces were created, named with English letters from "A" to "F" and containing about four chapters each. In 1885 the entire fraternity counted only 24 active chapters, and only one of these was in the North, Ohio Sigma at Mt. Union. In each province one chapter was designated Grand Chapter, and its archon served as the Eminent Grand Archon of the province.

All this did not work very well, because it was not at all clear what provinces were to do. Four years later the number of provinces was reduced to four, named with letters from "A" to "D." Still not much function.

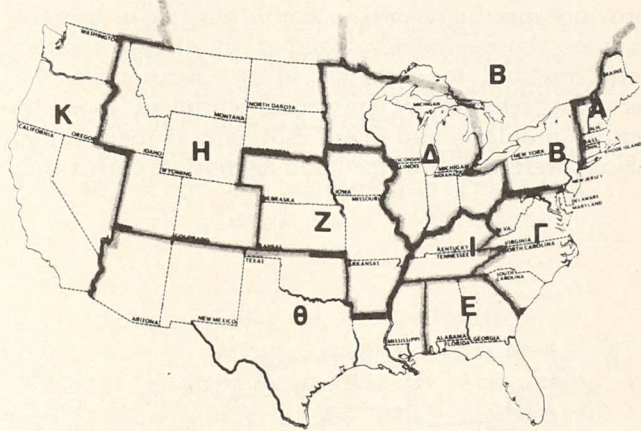


In 1889 the fraternity had only four provinces, named with English letters from "A" to "D."

These were, however, the years of the explosive Bunting-inspired growth of the fraternity, which saw the number of chapters double in eight years of frenzied extension. Although none of this growth was initiated in the provinces, fraternity leaders hoped that the existence of provinces might stimulate yet more growth. There is not much evidence that it did.

Yet ΣAE was committed to the idea of provinces. At Chattanooga in 1892 the national convention divided the 46 undergraduate chapters into seven provinces designated with Greek letters from Alpha to Eta.

With further expansion, two new provinces were created in the South, Theta in 1898 and Iota in 1902. In the far West Province Kappa was carved out of huge Province Eta in 1909, and Lambda in the Northwest was authorized by the 1914 Chicago convention.



By 1911 the number of provinces had grown to ten, each one named with a Greek letter.

A decade later Province Mu was created in the upper Midwest.

These twelve provinces served the fraternity adequately for many years, and leaders showed some reluctance to add new provinces, even as ΣAE expanded. But the post-World War II extension boom pushed the total number of chapters to 136, an average of 11.3 chapters per province. At the 1953 national convention in Chicago, ESR John O. Moseley presented a radical plan of province redistribution, calling for 20 provinces with an average of 6.1 chapters each.

The Moseley Plan was adopted, with modest revision, and since that time five more provinces have been added: Tau (Iowa, Nebr., S.D.) in 1959, Psi (Indiana) in 1965, Omega (Michigan) in 1969, Nu-Epsilon (Florida) in 1971, and Xi (Utah and Southern Idaho) in 1973. Thus today, 92 years after the first provinces were born, 25 of them serve 185 chapters, giving the provinces an average of 7.4 chapters each.

But what has been achieved in those 92 years?

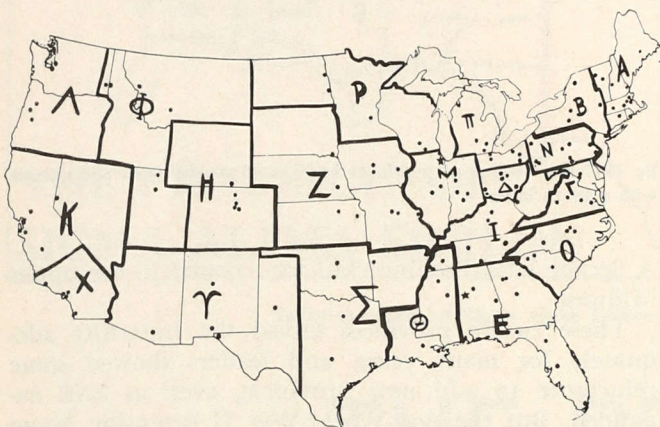
During the first years, very little at all was accomplished. Although it seemed then to be the sensible thing to do, dividing the fraternity into provinces meant little, because these units had virtually no function. Not one province met as a group of chapters until 1895. The first regional meeting of any kind in ΣAE had convened only three years earlier, when the Ohio State Association, with representatives from the four Ohio chapters, gathered at Columbus.

The impetus for the first province conventions in 1895 was provided by the abandonment in 1894 of

ΣAE's annual national convention for a biennial one, and the provision in the revised laws of the fraternity for province conventions.

And even after provinces began meeting, electing officers, conducting business, and, importantly, were being taken seriously by ΣAE national leadership, their purpose was vague, their direction uncertain.

As late as 1911, province conventions seemed unimportant. As we read in Walt's *Era of Levere*, "It must be said that the legislative accomplishments of these conventions were hardly monumental. At best the province meetings served a useful purpose in bringing chapter representatives together to discuss common problems and to exchange ideas. Occasionally they served as reflectors of grass-roots sentiment about fraternity problems and plans, especially if their alumni officers were well informed and aggressive. Only rarely,



A major redistricting of provinces was carried out in 1953, creating 20 provinces to serve the 136 undergraduate chapters of that day.

however, did the province convention constitute a really powerful element in policy-making or administration in the fraternity, even in their respective geographical areas."

That was, of course, 1911. The next year Billy Levere became ESR and things began to change in the provinces. It is paradoxical perhaps that precisely when ΣAE began to *centralize* its national organization, the regional units began to show signs of life. Levere went out into the field, recruited leadership, visited conventions, instructed chapters, coaxed the reluctant and inspired the willing; in short, he poured into the provinces a measure of vitality that had never been there before.

In 1977, fifty years after the death of Billy Levere, ΣAE's provinces are alive and mostly well.

THEY display some real strengths. For one thing, they are democratically governed. It may surprise many members to know that ΣAE is very nearly unique in the fraternity world in that it elects its regional

leaders at its province conventions. In most Greek-letter societies regional officers are either appointed or nominated by "national." Thus ΣAE province leaders are primarily responsible to the chapters that elect them and only secondarily accountable to the national fraternity.

Provinces provide the possibility of interchange of ideas among chapters in a relatively small geographical area. And undergraduate chapters, not to speak of alumni associations, sense through province involvement that they are a real part of a national organization.

Provinces are the nursery of national leadership. With few exceptions, every Supreme Council member during the past fifty years has come up through the ranks of province leadership.

On the whole, province conventions today are *much* better run, better informed, and better attended than ever before. And awards presented at conventions help to heighten awareness of the province among undergraduates.

For the most part, chapter visitation by province officers is more frequent and surely more productive than it has ever been before. To be sure, in a few provinces there is no visitation at all, but it is gratifying to note that such cases are increasingly rare.

Yet there are persistent weaknesses. In many provinces both leaders and chapters have no clear concept of what the province ought to do, or can do. In most provinces it is still difficult to find active, willing, informed, and dedicated leaders. Alumni associations don't seem to seek out leadership, and chapters seem not to care. As Roy Miller, past ESA and long-time province archon, put it succinctly when talking about leadership: "If you find it, there's nothing better; if you don't, nothing you can do is worth a damn."

Most provinces are woefully underfinanced. Effective chapter visitation and communication are expensive. Provinces have too little money, because most province leaders are too timid to ask for it and most chapters are too skeptical to give it.

Speaking of communication, not many provinces have any of it at all, except for calls to conventions. Too few letters are written (or answered). Province publications are a rarity.

Some ΣAEs believe that we have too many provinces. "The fraternity," says one archon, "is really too fragmented. It's hard to recruit 25 good leaders every few years. Larger provinces would ensure finding stronger men, responsible to a larger electorate." Most province archons disagree, however, arguing that one cannot expect province leaders, all of them volunteers, to attempt to work with too many chapters or to travel great distances on weekends, the only time most officers can make chapter visits. In one of our provinces the distance between two chapters on the extreme edges is nearly 400 highway miles, enough to discourage much visitation.

Provinces are deeply involved in the extension process, because of ΣAE's commitment to democracy and

—continued on page 56

ΣAE-GRAM

1856 Sheridan Rd.
Evanston, Ill. 60204

The upcoming National Convention at Philadelphia in June promises much excitement on the political scene. Because of ESH Skip Moore's decision not to continue on the Supreme Council, two seats will be open. Running unopposed for ESH is Johnny Warren, Emory '59, former Province Epsilon Archon. In the race for ESCh at press time are Pete Cullin, Indiana '60, former Province Psi Archon, Tom Kessler, Kent State '61, veteran Director of Leadership Training, and Chuck Larson, DePauw '57, President of New York alumni, and a possible fourth candidate yet to be announced.

The death of Rex A. Smith, Nebraska '24, former ESR, is subject of a memorial section in this issue of The Record Good news is the New York Alumni Association's "T.H.E." ("The Highest Effort") awards at its founders day banquet to 11 outstanding SAE alumni. The whole story will appear in the August Record.

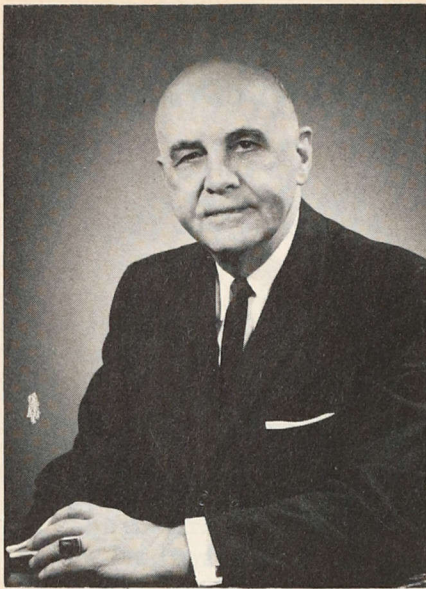
Sad to report is the demise of the William and Mary chapter (Va. Kappa), one of the fraternity's ante-bellum chapters. Charter is in the hands of an alumni commission awaiting eventual go-ahead to re-organize Va. Kappa on a sound basis In bad shape, too, is 28-year-old Utah Phi at University of Utah. It must make some serious decisions about its future, lest apathy kill it.

Baylor U. has relented and will welcome SAE in spite of the sorry Ft. Worth alumni brouhaha. The local Phi Kappa Alpha will present its petition to SAE at Philadelphia. Other petition comes from Salisbury State Colony in Maryland.

Initiation reports are still slow, but alumni giving is excellent. More new Founder Members of LMF than ever before. ESR Hotaling calls 1976-77 "a truly exceptional giving year."

Atlanta now boasts the greatest concentration of SAEs: 2,317, followed by Chicago with 2,226 and Memphis with 1,664.

On campus: Colleges are re-appraising undergraduate curricula. After a decade of dropping required courses (except for taking a major), schools are increasingly uneasy about the results and are reinstating general education requirements. President of Johns Hopkins, calling for change, put it bluntly: "We're turning out highly technical and highly skilled people who are literally barbarians." Stanford has instituted a "Western culture" requirement. Harvard is more ambitious and will probably introduce a whole range of courses. Other colleges and universities by the dozens — the best of them — are in the middle of wide-ranging studies which will undoubtedly see much tightening up of curricula nationwide.



In Memoriam

Rex A. Smith, 1902-1977

Since Rex Smith's passing, a large number of his friends have written to *The Record* to express their feelings about this great ΣAE. We are happy to publish excerpts from some of these letters, regretting only that limitations of space limit the number that can be printed.

The fraternity was saddened when members of ΣAE learned of the death of Rex A. Smith, Nebraska '24. He passed away at Evanston, Ill. on January 27, 1977, after an extended illness. A memorial service was conducted at the Levere Memorial Temple on February 1, with ESA Russell P. Heuer officially representing the fraternity.

Brother Smith's was a distinguished record of service to ΣAE. He served as ESR from 1956 to 1969, after which he continued as executive secretary of the Levere Memorial Foundation until his retirement in 1972.

Born in Morganton, N.C., August 20, 1902, Smith moved with his family to Lincoln, Nebr., in 1903. After graduation from Lincoln High School he entered the University of Nebraska and was pledged to Nebraska Lambda-Pi in the fall of 1920. After three years at the university he moved to Chicago for advanced work in advertising. While in Chicago he roomed at the Illinois Psi-Omega chapter house at Northwestern. There he met, and was captivated by, William C. Levere. "I really believe I got my complete ΣAE indoctrination from Billy," said Smith. "How many hours we spent together talking about the fraternity!"

After his Chicago training he returned to Lincoln and married Harriet Wilborn from Glasgow, Ky. He entered a career in the retail clothing business and was extremely successful in it. In 1942 he joined the Ben Simon and Sons firm and served in a number of capacities in that large clothing or-

You only had to meet him once and you knew him from then on—and he knew you forever. Who could ever forget Rex Smith? I somehow always felt he could have been an outstanding character actor with that distinctive pate, his oft times furtive bearing quickly broken by his always quick-to-appear smile and his bright greeting for all he ever met. That which stands out most in my mind about Rex is that he always made me feel that I was somebody he was really glad to see and that I was in some way special to him. I am certain that many others felt exactly the same. He had the unique ability to affect people this way. This was his trademark. I think I knew Rex for at least twenty-five years—that doesn't really matter—but he never grew older in my eyes. He always looked and acted the same way. His manner was distinctive. To me he was indeed an ageless gentleman. I have never heard anyone say anything less of him. Rex was a man who could just as easily rise above adversity as well as to enjoy a certain kind of humility with the same graceful style. I remember him first and foremost as a gentleman and as a friend.

Dr. Louis E. Smith, *ESDA*

REX SMITH—A man of integrity, honor, trust and sincerity. Having been his secretary for sixteen years I feel I really knew him well. He liked attention but became embarrassed when a fuss was made over him. He was intelligent, a good business man and had the qualities to run an office efficiently.

ganization, rising to the position of secretary and member of its executive council.

The next year he was elected treasurer of his province and attended his first ΣAE national convention. He continued as treasurer of Province Zeta for many years, refusing out of modesty to accept the archonship.

He was named Eminent Supreme Recorder in 1956 and took up his duties on July 19 of that year. As ESR Rex Smith brought the fra-

ternity sound fiscal management in an era of unprecedented growth. Then, when the difficult years came on college campuses all over the country in the 1960s, he continued to provide solid leadership in the National Office.

He was a Mason, a very active Rotarian, and a Presbyterian. He is survived by his wife Harriet and his daughter, Nancy. Their address is 2025 Sherman Avenue, #206, Evanston, Ill., 60201.

ernity sound fiscal management in an era of unprecedented growth.

Then, when the difficult years came on college campuses all over the country in the 1960s, he continued to provide solid leadership in the National Office.

He was a Mason, a very active Rotarian, and a Presbyterian. He is survived by his wife Harriet and his daughter, Nancy. Their address is 2025 Sherman Avenue, #206, Evanston, Ill., 60201.

It was always a pleasure to come to work when Rex was ESR. One of the things that I experienced was that he was so kind, especially if one were ill. Nothing was too much for him. I will miss Rex as he was a good friend and I have many happy memories of our association together.

Ruth O'Malley

Rex needs no eulogy from those who knew him,
For his radiant spirit can never be dispelled.
He took from life its multitudes of duties
And wove them into helpfulness.
In Rex, men found friendship, faith and cheer.

Sigma Alpha Epsilon was sacred to this brother and the one who affirms it spent many hours with him and knew the warmth and the dedication he felt. As Edna Ferber said in *Cimarron*: "Some people make the world; the rest just come along and live in it." Some men make ΣAE and surely Rex was one. He assayed the rich gold and followed the thread of deepest blue and evolved a tapestry of life in richer hue.

The depth of our friendship is revealed in the fact that I was present at Rex's request when he was honored with the Distinguished Service Award. It was a great night for a great ΣAE, and for this friend from Delta Upsilon!

Dr. James C. McLeod
Former Dean of Students
Northwestern University

ternity sound fiscal management in an era of unprecedented growth. Then, when the difficult years came on college campuses all over the country in the 1960s, he continued to provide solid leadership in the National Office.

He was a Mason, a very active Rotarian, and a Presbyterian. He is survived by his wife Harriet and his daughter, Nancy. Their address is 2025 Sherman Avenue, #206, Evanston, Ill., 60201.

In Memoriam

John H. Baugh, 1905-1976

Although we printed an account of the passing of John H. Baugh in the February issue of *The Record*, we believe it is fitting to print a few excerpts from the many letters we have received from many of the countless friends John made during his 70-plus years on earth.

John Baugh was, above all, an individual, and although he could be salty at times, he was willing to be a friend to all if they would only meet him half way. With his insight and experience, few in the fraternity succeeded in pulling the wool over his eyes, be it undergrad or national officer, and yet all respected him. I, for one, often sought his opinion, knowing that it was based on his many years of experience with people and with fraternity matters, and that it would be honestly given. One of the characteristics that I found so remarkable about John was his astounding ability to instantly recall the innumerable names, faces, and accompanying incidents that spanned his years in the fraternity, thereby making our history live for the listener. His love of and service to our brotherhood will be both missed and long remembered by those of us who knew him.

William C. Chapman
Oklahoma '57

I will always remember John Baugh as a friend, a leader, and a man who had greater influence on Chapter members than any other man I know.

His deep love for ΣAE, his quiet, warm and loving nature made John's efforts most successful. Any time I had a problem with regard to the fraternity, or needed advice or assistance, I knew I could count on John Baugh to help me. In those instances, I felt free to call on John Baugh and he was always willing and able to help.

I attribute much of the success of our great fraternity since World War II to the untiring work of John. I hope for the future of our fraternity that we will have involved many more men who possess the character, temperament and devotion to ΣAE and its members of John Baugh.

Lauch M. Magruder, Jr.
Mississippi '49

There are many who will remember John H. Baugh, Jr. as an Honorary Eminent Supreme Archon, a founder member, the Leadership School Pledge Trainer, the Dean of Consultants, the "Silver Fox," the Republican Party Committee-

man, the Presbyterian elder, the Province Alumni Secretary, the Permanent Extension Committeeman, or the advisor to his *alma mater* chapter, Oklahoma Mu. My own memories of John, however, stem from the many discussions we engaged in while sharing a meal or traveling together on behalf of the fraternity during my two years as an Educational and Leadership Consultant (1970-1972).

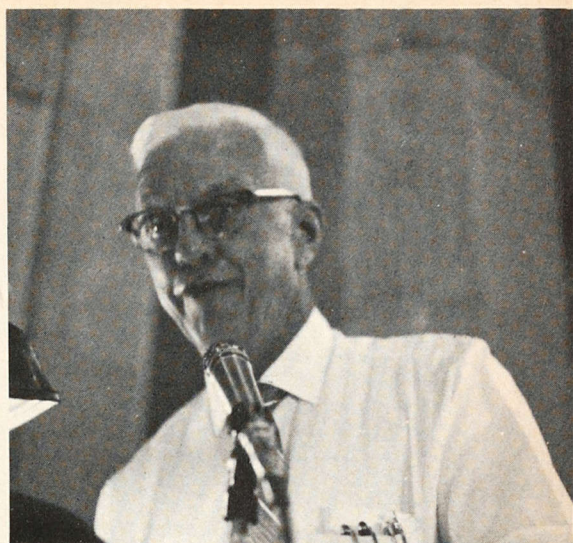
I can still see John leaning back in his chair sipping his beloved Henry McKenna or clasping his hands behind his head while puffing on an after dinner cigar. Whatever the topic of discussion—religion, politics, or college football—John would find it "most interesting." His enthusiasm for Sigma Alpha Epsilon was nurtured by his association with Dr. John O. Moseley, for whom Oklahoma Mu was named. John maintained and stimulated his fraternal zeal through his constant contacts with the chapters collegiate composed of those whom John would warmly refer to as "the impetuous youth of today."

Despite John's loyalty to *Moseley's Maxims*, perhaps the most lasting and fitting impression of the (Bachelor) Man from Meeker is conveyed in a Shakespearean quotation that John was quite fond of using and after which he patterned his life,

"This above all—To thine ownself be true, and it must follow, as the night the day, Thou can'st not then be false to any man."

Monty Podva
California at Davis '69

My friendship with John goes back forty-one years. We were both at Oklahoma A and M, now Oklahoma State University. John was working on a Masters Degree and I on requirements to enter dental college at Kansas City. My wife Ruth also knew John approximately the same length of time. She was a member of Kappa Alpha Theta which was about 100 feet from the ΣAE House. Ruth and I were always trying to line John up with one of her sorority sisters and almost made it. But ole good looking John, blushing, always managed to slip through the net. As you might know John never married.



Through his several years of teaching in junior high school, our four years in WWII, we corresponded. [After] John joined with the administrative offices of ΣAE at Evanston, our home then became a second home for John. When he was back in Meeker to visit and after his retirement, John would be with us to unload his mind, eat lunch or dinner, or just like when blood brothers and sisters get together. When I'm sitting on the couch in our den I expect to hear the doorbell ring and see John's grinning face at the door window.

Ruth and I lost a real friend.

Dr. Fred D. Riddle
Oklahoma State '38

Twenty-five years ago when John, my late husband, and I lived in the house next door to the Temple, John Baugh stayed in our home while Leadership School was in session. We enjoyed his company very much. I think John Baugh looked on us as home folks.

Today, many men are proud to show their skills and talent in preparing exotic dishes. John was an early forerunner of this trend. He carried with him on his travels a large iron skillet, for his specialty was old time fried chicken.

ΣAE has lost a dedicated member, and my family and I have lost a warm and true friend.

Marie Moseley

John Baugh's one and only love, outside of his immediate family, was Sigma Alpha Epsilon.

He was the defender of the active brothers and pledges on all occasions. He would be critical of them when he thought it was advisable, but he defended them from any "outside criticism."

John in his years of travel probably knew more ΣAE's and their families than anyone else and he corresponded and took gifts to many grandmothers where he visited.

John was set in his ways, but he prac-

✠ *Rex A. Smith, 1902-1977*

Rex Smith was different from all of his predecessors (as ESR). He was not the evangelistic type. . . . He had a good education but he was not marked by exceptional scholarship or fondness for things academic. He was essentially a most friendly person, and I think enjoyed the traveling that had become so essential by the time he became ESR.

He had had many years of business training, and from that standpoint was probably better equipped than any of his predecessors to handle promptly and efficiently his administrative duties. He was an honest, capable and very diligent worker. I always thought that the one word that fitted Rex best was "solid."

In short he was a most reliable, competent, diligent, and devoted ΣAE and ESR. He and I were close friends, both during his term of office and since, and I shall miss him greatly.

*Norman H. Pritchard
Franklin '04*

Rex A. Smith was one of the finest men one will ever meet along life's way, being genuinely interested and concerned for those who were fortunate enough to know him. It is difficult to know the countless number of lives that were touched by him during his lifetime, but it is certain that each was enriched by his counsel and friendship. Rex will be sorely missed.

Fond memories of Rex, especially, pre-

dominate—for the many good things he did for ΣAE. He came on deck as ESR when improvement in financial management was badly needed, and succeeded effectively in making a good turnaround. He contributed greatly to strengthening ΣAE nationally and to the support of his own chapter. While on the national Board of Trustees for over 20 years, Rex was most helpful. R.I.P., Rex, you merit praise for a job of life well done.

*Hal Pope, Harvard '25
Former Chm., Board of Trustees*

The business experience Rex had as well as the personal qualities which he exhibited were sorely needed . . . to assure ΣAE of having a firm, secure business and financial structure. His high ethical business principles, his personal integrity and his determination to get a job done were coupled with his kindness, his understanding and his personal warmth. It was all of these qualities together which made Rex most effective in accomplishing what was so essential to our progress as a national fraternity.

Yes, ΣAE truly has been blessed through its high principled and dedicated leaders. Rex Smith, among them, has left his indelible mark on our future. I shall always remember him as a person who was totally committed to the principles of our fraternity and its role in the lives of its members, both young and not so young. I am proud to have had the privilege of working closely with him. My life is

much richer for having done so. He was a true gentleman.

*Paul B. Jacob, Jr.
Past ESA*

In remembering Rex Smith, your editor begs for a few lines of personal privilege.

Many years ago, as a skinny 17-year-old sophomore I had a chance to represent my chapter at the Leadership School. Awed by the magnificence of the Levere Memorial Temple, I savored opportunity to get to sit at the feet of ΣAE's greatest teacher, John Moseley. But I shall never forget that I met there also another remarkable ΣAE, Rex Smith. Why did I remember the incident? Well, when we were introduced, Rex shook my hand and asked, "Are you related to Harold Walt?" I replied, "Yes, I am. He is my father." Smiling broadly, he said, "Well, Joe, I pledged your father to ΣAE standing on the front steps of the Nebraska chapter house back in 1922."

Rex was my dear friend from that day forward. And of course I was delighted when he was called to the post of ESR in 1956. His years at the helm in the National Office were by any measure highly successful, and I had many reasons to be thankful for his self-effacing service there.

Rex Smith was highly respected for *what* he was. He was deeply loved for *who* he was. I shall miss him.

The Editor

✠ *John H. Baugh, 1905-1976*

ticed what he preached. And he was always remembering some one else in some manner.

*Leo S. Cade
Oklahoma '22
Past ESA*

Trying to capture in a few brief words the essence of a man and of a twenty-eight-year friendship with him is a difficult task under normal circumstances. When the friend was John Baugh, it becomes even more difficult. John was a unique person—devoted to his family, his friends, his university, his state, and above all, his fraternity. He was equally at home in the company of undergraduate students, alumni, and college administrators and earned the respect and admiration of each of them. He was a living ΣAE alumni directory, keeping track of brothers from one end of the country to the other, long after they had departed the active chapters. He kept himself well-informed on academic developments, as well as fraternity affairs, enabling him to be accepted by both students and academicians on the hundreds of campuses he visited during his long tenure on the national office staff.

Surely the name of John Baugh will live forever in ΣAE's glorious history, along with those other stalwarts like

Billy Levere, John O. Moseley, and Lauren Foreman, whom he has now joined in the Chapter Eternal. I can hear him now, bringing them up to date on the activities of the fraternity and the whereabouts of many of their mutual friends.

*Jack Marshall
Westminster '53*

John Baugh thoroughly enjoyed being with people, especially those of college age or the older group. He, I'm sure, could count his friends by the hundreds.

I have known John to travel miles out of his way to contact a brother who was ill, or one with whom he had not been in touch for a time—he seemed, always, to have the time—because he cared.

Am sure not many of John's Okla. Mu brothers (the younger ones) knew John had a fine voice. During his college days at Oklahoma State University, and later during his teaching years in Stillwater High School, he was often in demand by college organizations, his church and high school musical groups.

Having known John since a lad of ten years, later his housemother at Okla. Mu, you may know how deeply proud I was that you chose John, my Okla. Mu son, to fill a national office in Sigma Alpha

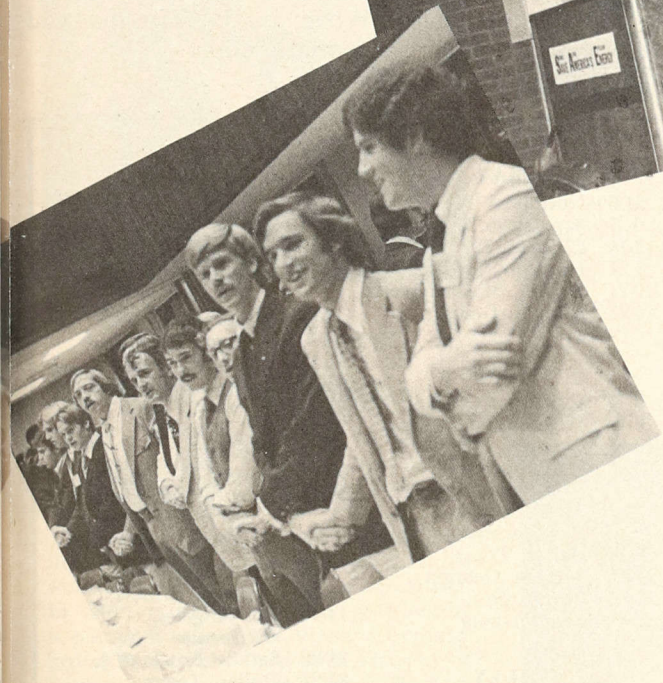
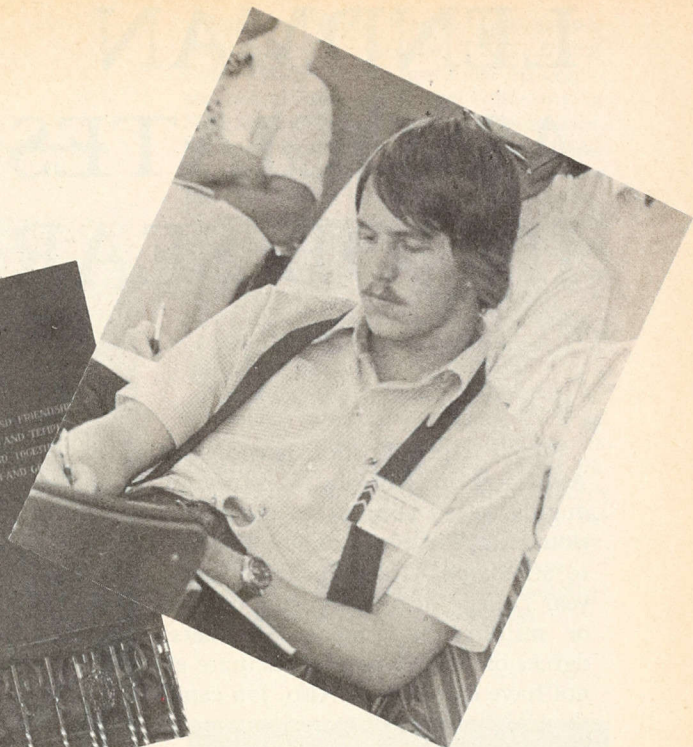
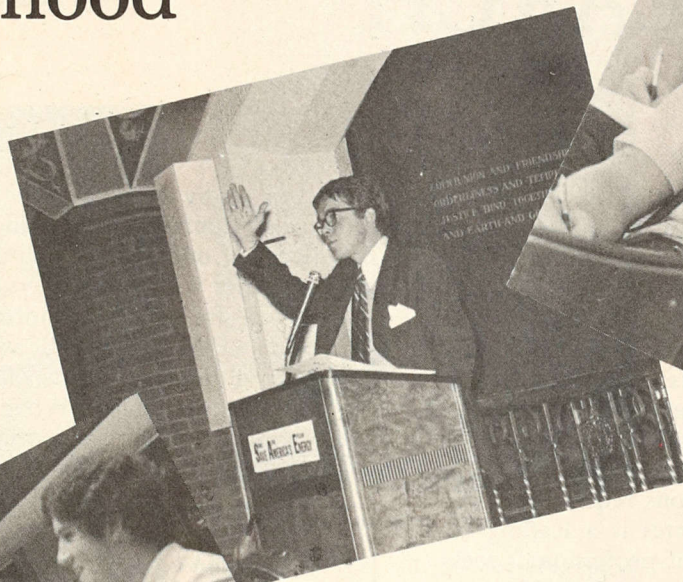
Epsilon. I thank you now for giving John this honor. We shall all miss John so very very much.

*Katherine C. Woods
Former Housemother, Okla. State*

I first met John at the 1972 Leadership School, but I felt I'd known him long before that. He had been the chapter advisor at Oklahoma Mu when my father was EA of the chapter in the '40's, and my parents and my father's mother spoke often of him. That first meeting was in the summer before my sophomore year in college, and during the next three years. I visited John at his home in Meeker many times, usually on Sunday nights. On those visits John and I would have dinner at one of the country cafes in the area, then return to his house and talk for hours. The biggest part of the conversation always centered on ΣAE. It was apparent to me that even after his retirement, the fraternity was still the most important thing to him. He delighted in talking about every aspect of the fraternity, particularly its politics, and was never hesitant in expressing his opinion of an issue or of a person.

*John March
Oklahoma '76*

Leadership New Ideas Brotherhood



The Leadership School

of Sigma Alpha Epsilon

August 14, 1977 • Evanston, Illinois

SPECIAL ACTIVITIES

Pledge Program

Newsletter Competition

Glee Club

The ΣAE Story

Model Initiation

Tours of the Temple

*... and a new program just
for Chapter Advisors*

Join over 400 brothers in this unique program centering around the basics of rushing and pledge education and branching out to every facet of chapter operation from alumni affairs to social programming. The Leadership School has something for everyone and an exceptionally qualified faculty is prepared to share ideas and make specific suggestions. Come and enjoy the fun, spirit and pride of ΣAE at the 43rd Leadership School.

Registration forms can be obtained from your Eminent Archon or by writing to the National Office, P.O. Box 1856, Evanston, IL 60204

LENDMAN ASSOCIATES TO AID IN JOB SEARCH

Sigma Alpha Epsilon is cooperating with Lendman Associates in Norfolk, Virginia in a new and thoroughly tested concept in career planning and professional employment assistance. This service is available to all Sigma Alpha Epsilon alumni, who have a four year college degree and one or more years of business or military experience. Members with engineering degrees or MBA's may participate even though they do not have experience. Also, job candidates having more than eight years of experience normally choose not to attend because of a lack of positions requiring extensive experience. Lendman Associates is a leading organization in the job placement of professionals seeking employment at moderately advanced positions in business and industry.

The firm has developed a revolutionary concept for bringing job candidates into contact with large and small business and industrial corporations. The Lendman Equal Opportunity Career Conference is a well-planned meeting, which permits approximately 250 college degreed job candidates to hear representatives of 30 or more participating firms describe their job opportunities. After listening to the jobs available, the prospective employees schedule interviews with those firms of greatest interest. Thirty minute interviews take place on Saturday in the company representatives' hotel rooms. Career Conferences host a variety of companies from large industrial giants like Ford, General Electric, and Westinghouse to smaller firms, whose names are not so familiar. In addition to the company exposure which applicants receive through a Career Conference, they also benefit from a variety of helpful seminars, panel discussions and direction from special Career Conference participants.

Between five and six Career Conferences are held monthly in luxury hotels located in principal cities nationwide. Since Lendman's services are paid for entirely by American industry, there is no cost to the job applicant. He or she pays only for transportation to the Career Conference, room and meals. Career Conference participants receive special reduced room rates at the hotel.

Several national fraternities and honor societies currently participating have reported that many alumni have located new careers through the program. No longer is it necessary for job candidates to

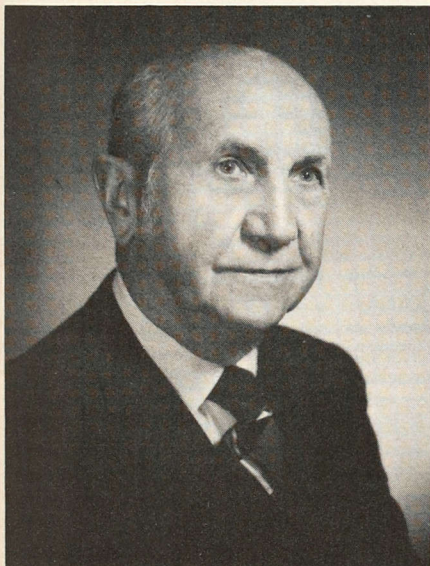
travel to many areas to see prospective employers. At Career Conferences, employers gather together in on place at one time to discuss their employment opportunities with job seekers in attendance.

If you desire additional information, you may contact Stephen M. Campbell at the Corporate Headquarters of Lendman Associates, P.O. Box 14027, Norfolk, Virginia 23518. When you do, state that you are a member of Sigma Alpha Epsilon.

MAY		26-27	Saddle Brook, New Jersey
5- 6	Norfolk, Virginia	26-27	Pittsburgh, Pennsylvania
6- 7	San Diego, California		
13-14	Chicago, Illinois		
20-21	Houston, Texas		
20-21	Boston, Massachusetts		
20-21	Atlanta, Georgia		
JUNE			
2- 3	Cincinnati, Ohio		
9-10	Washington, D.C.		
10-11	Chicago, Illinois		
10-11	Los Angeles California		
17-18	Saddle Brook, New Jersey		
17-18	Dallas, Texas		
24-25	Atlanta, Georgia		
24-25	Pittsburgh, Pennsylvania		
JULY			
8- 9	Chicago, Illinois		
8- 9	San Francisco, California		
8- 9	Houston, Texas		
15-16	Norfolk, Virginia		
15-16	Atlanta, Ga.		
15-16	Stamford, Connecticut		
22-23	Detroit, Michigan		
29-30	Dallas, Texas		
29-30	Cincinnati, Ohio		
AUGUST			
5- 6	Boston, Massachusetts		
5- 6	Chicago, Illinois		
5- 6	Los Angeles, California		
12-13	Washington, D.C.		
19-20	Atlanta, Georgia		
25-26	San Francisco, California		
25-26	Dallas, Texas		
		26-27	Saddle Brook, New Jersey
		26-27	Pittsburgh, Pennsylvania
SEPTEMBER			
		8- 9	Washington, D.C.
		9-10	Chicago, Illinois
		16-17	Cincinnati, Ohio
		23-24	Boston, Massachusetts
		23-24	Houston, Texas
		23-24	San Francisco, California
		30- 1	Detroit, Michigan
		30- 1	Atlanta, Georgia
OCTOBER			
		7- 8	Washington, D.C.
		14-15	Chicago, Illinois
		14-15	Los Angeles, California
		21-22	Saddle Brook, N.J.
		21-22	Dallas, Texas
		21-22	Cincinnati, Ohio
		27-28	San Francisco, California
NOVEMBER			
		3- 4	Norfolk, Virginia
		4- 5	Atlanta, Georgia
		11-12	Boston, Massachusetts
		11-12	Chicago, Illinois
		11-12	Houston, Texas
		18-19	Los Angeles, California
DECEMBER			
		2- 3	Washington, D.C.
		2- 3	Dallas, Texas
		2- 3	Atlanta, Georgia
		8- 9	Saddle Brook, N.J.
		8- 9	Chicago, Illinois
		9-10	San Francisco, California

alumni notes

Seven Become Founders



Founder 311

Charles A. Preuss

Charles A. Preuss, Idaho '24 (Alpha) of Santa Barbara, California has become Founder Member 311 of The Levere Memorial Foundation.

Preuss has been in the general practice of medicine since 1929. Most of his work now is in the field of geriatrics. In addition to his medical practice, he is past-president of the Western Gerontological Society, the California Academy of Family Practice and the Santa Barbara Medical Society.

Preuss has been very active in ΣΑΕ affairs and was instrumental in the chartering of California Eta at California-Santa Barbara.

H. Curtis Cassill

Founder Member 312 of The Levere Memorial Foundation is H. Curtis Cassill, Southern California '22 (Gamma), of Laguna Hills, California. Now retired, he was vice president and manager of the Wilshire Western Branch of the Bank of America. He was associated with the bank from 1923 until his retirement in 1965.



Californian becomes Founder

Cassill's civic activities included presidency of the Boys Club of Long Beach, membership in the Long Beach and Los Angeles Chambers of Commerce, presidency of the Wilshire Sertoma Club and a directorship of the Wightman Good Will Industries of Long Beach.



Ambrose is Founder 318

James A. Ambrose

Dr. James A. Ambrose, Occidental '39 (California Epsilon), of San Clemente, California, has been designated Founder Member 318 of The Levere Memorial Foundation.

Following World War II, Ambrose was commissioned a Regular USAF Dental Corps Officer and he continued his graduate dental training at the University of Michigan, department of periodontology. He then became the first Regular USAF member to achieve Diplomate status having been tested by the "specialty section" of the Michigan State Board of Dental Examiners. Diplomate status was also earned through examination by the American Board of Periodontology. He is a Fellow of both the American College of Dentists and the International College of Dentists.

Following his military retirement, he continued a specialty practice in Pasadena, California. He also maintains affiliation with the professional dental fraternity, Xi Psi Phi, the Retired Officer's Association and is a member of the President's Circle of Occidental College. In addition, he is a retired member of the American Academy of Periodontology and American Dental Association.



Founder 320

Arthur W. Hiner

Arthur W. Hiner, Jr., Denver '24 (Colorado Zeta), of Denver, Colorado has become Founder Member 320 of The Levere Memorial Foundation. He is chairman of the board of Capitol Federal Savings and Loan Association of Denver.

Hiner is a past president of the Denver Exchange Club, Denver Chapter of the Society of Residential Appraisers, Savings League of Colorado, Midwest Savings Conference and the Denver Chapter of the Institute of Financial Education. A past director of the Federal Home Loan Bank of Topeka, United States Savings and Loan League, and the Savings and Loan Foundation, Inc., he is

also a past district governor of the National Exchange Club.

Hiner is a member of Knight Templar, 32nd Degree Mason, Royal Order of Scotland, and Royal Order of Jesters.



Becomes Founder posthumously

William W. Whitehead

An in memoriam gift by his wife was made in the name of Col. William W. Whitehead, **Montana '36 (Beta)**, which made him Founder member 321 of The Levere Memorial Foundation. Col. Whitehead died May 22, 1976.

A graduate of the Army-Navy Military Academy and the University of Washington, he entered the armed forces at Ft. Lewis, Washington and retired 26 years later in 1968.

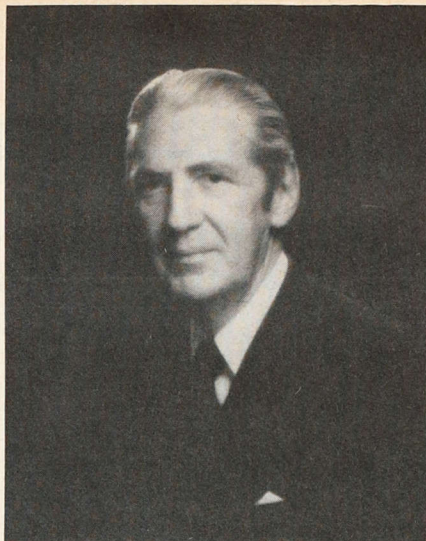
After World War II, he served overseas in England and France and his last overseas assignment was Athens, Greece as controller of U.S. Services.

Col. Whitehead was a graduate of the Command and Staff School, Maxwell AFB, Alabama; a charter member of the Retired Officers Association, Lexington, Kentucky; and a life member of the U.S. Air Force Association.

Harry Hall Trice

Harry Hall Trice, **Missouri '34 (Alpha)**, of Columbia, Missouri, became Founder Member 323 of The Levere Memorial Foundation.

Recently retired, Trice was president of Conley-Myers Insurance Agency, Inc., of Columbia. He served as president of the Missouri Association of Independent Insurance Agents in 1965 and is a member of the Columbia Rotary Club.



Trice achieves Founder status

Trice has been active in Σ AE affairs and served on the Board of Trustees for Missouri Alpha from 1936 to 1961. He also served as treasurer of Province Zeta.



Founder Lumbattis

J. Carson Lumbattis

Another recent Founder Member of The Levere Memorial Foundation is J. Carson Lumbattis, **Illinois '36 (Beta)**, of Toledo, Ohio. He is Executive Vice President of The Jennison-Wright Corporation, a firm he has been associated with since 1946. In addition, he is a Director of the corporation and also of People's Savings Association.

Lumbattis has been active in community affairs and is a past president of the Toledo Area Chamber of Commerce. He also is a member and past president of the Toledo Rotary Club and a past

director of the Community Chest, United Appeal and Northwestern Ohio Heart Association. Lumbattis has been an elder, deacon and trustee of the Collingwood Presbyterian Church.

S. Shepherd Tate, **Southwestern at Memphis '39 (Tennessee Zeta)**, of Memphis, has been nominated as president-elect of the American Bar Association. He will be formally endorsed as the president elect for 1977-78 during the ABA House of Delegates meeting in August.

A member of the law firm of Martin, Tate, Morrow & Marston, Tate has been long active in the bar associations. He is past president of the Tennessee Bar Association, Memphis and Shelby County Bar Association and National Conference of Bar Presidents.

Eugene Fredric, **Mississippi State '39 (Theta)** was crowned King of the Greenwood, Mississippi Junior Auxiliary Cotton Ball on February 19. He is currently associated in farming with his son and son-in-law. A director of Farmers Service, Fredric also is president of Midway Gin Co., director of Staple Cotton Service and a commissioner of the Mississippi-Yazoo Levee Board.

James C. McElree, **Allegheny '72 (Pennsylvania Omega)**, of Meadville, Pa., has been named assistant manager of Gelvin, Jackson and Starr Realty.

McElree, who received his real estate education through Pennsylvania State's Continuing Education Program, acquired his insurance broker's license in 1975 and his real estate license in 1976.

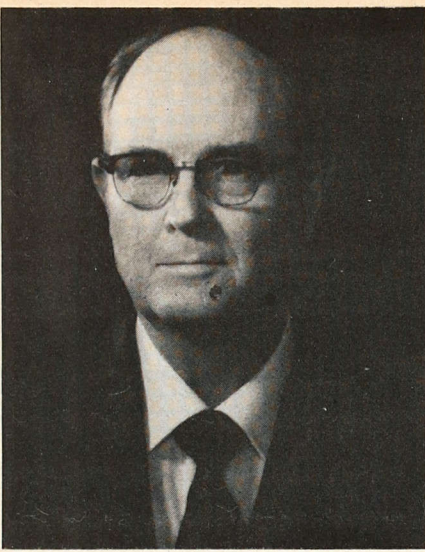
Previously, he was associated with McClure-Watson Real Estate and Insurance of Greenville, Pa.

Two 1943 graduates of the University of Richmond, Virginia Tau, have been appointed to government positions. Marvin F. Cole of Richmond has been appointed a Circuit Court Judge by the Governor of Virginia and was confirmed by the Virginia General Assembly in January, 1977.

Cecil F. Jones has been appointed Director of Finance for Henrico County, Virginia.

Both men are past Province Gamma Archons.

Richard J. Udouj, **Arkansas '58 (Alpha-Upsilon)**, of Fort Smith, Arkansas, has been named Chairman of the Dallas Market Center's Furniture Advisory Board of Governors. Udouj, president of Riverside Furniture Corporation, assumed the new position on January 16. During 1976, he served as vice-chairman of the Board.



Gantt Medal winner

Kenneth R. Daniel, **Alabama '36 (Mu)** of Birmingham, Alabama, has received the 1976 Henry Laurence Gantt Medal Award. Daniel is president of American Cast Iron Pipe Company (ACIPCO).

The award is given in recognition of "distinguished achievement in management as a service to the community." The award was given on March 10 at the American Management Association's 48th Annual Human Resources Conference and the medal was presented by both the American Management Association and the American Society of Mechanical Engineers.

Daniel began his career with ACIPCO in 1936. In 1941 he joined the U.S. Army and in 1946 returned to ACIPCO. He became Chief Engineer in 1948, Vice President Engineering in 1955, Vice President Engineering and Purchasing in 1959 and Executive Vice President in 1961. In 1963 he was named President.

Daniel was cited as the outstanding University of Alabama alumnus for Jefferson County and has received the Salvation Army William Booth Award. He also served, in 1969, as President of the Birmingham Area Chamber of Commerce.

E. Douglas Kenna, **Mississippi '45 (Gamma)** was named executive vice president of Carrier Corporation on March 14. A native of Jackson, Mississippi, Kenna served as president of the National Association of Manufacturers.

His new responsibilities will include the energy systems division, corporate development division and diversified products group for Carrier.

Kenna has been associated with Westinghouse Electric, Avco Corp., was president of Fuqua Industries, and was president and managing partner of Robert B. Anderson, Ltd., before joining the National Association of Manufacturers.

Lt. Col. Norman E. Clyde, **Allegheny '53 (Pennsylvania Omega)**, has retired from the Army after 22 years of service. He was executive officer of the Army Research Institute of Environmental Medicine in Massachusetts. Clyde is now employed by Harrington Manufacturing Co. of Lewiston, North Carolina.

Alan D. Antoine, **Wisconsin '62 (Alpha)**, has been appointed Associate Dean of the Graduate School of the combined New Brunswick and Camden campuses of Rutgers, The State University. He has been a member of the faculty since 1968 and was promoted to Associate Professor of Microbiology and Biochemistry in 1975.



Jaycee Award winner

Carl Utz, **Toledo '66 (Ohio Nu)**, of Portland, Oregon, has been presented the 1976 Portland Jaycees Distinguished Service Award. His work which led to the award included a homeowners property tax relief bill, vision screening clinic for pre-school age children and an environmental impact study.

Utz is a budget director for Pacific Northwest Bell and is chairman of the American Red Cross disaster action committee for the Oregon Trail chapter.

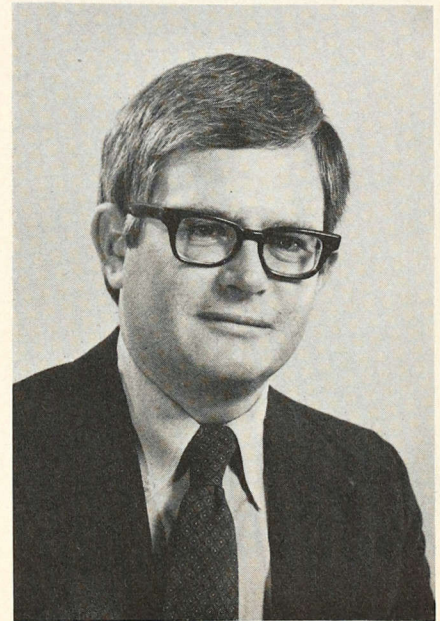
Samuel D. Blair, **Allegheny '50 (Pennsylvania Omega)**, has been named vice president in charge of distribution for the Nestle Co. Prior to this appointment, Blair was director of distribution and planning for Life Savers, Inc., a division of Squibb Corp.

Willard L. Hemsworth II, **Illinois '68 (Beta)**, of Oak Park, Illinois, was elected a partner of Tatham-Laird & Kudner (TLK) Advertising agency. Hemsworth, a media planner for TLK, has been with the agency since 1973.

Samuel P. Bates III, **Allegheny '52 (Pennsylvania Omega)**, has been named public relations manager, International Operations for 3M Co., St. Paul, Minnesota.

He joined 3M in 1957 after having served as news director of Hamline University in St. Paul. His new duties with 3M include coordination of public relations for 3M's subsidiary operations overseas. He will work out of the headquarters office in St. Paul.

Samuel R. Davis, Jr., **Kansas '61 (Alpha)** of Palos Verdes Estates, California, has been appointed Vice President, Controller and Treasurer of McCulloch Corporation. The new chief financial officer of the chain saw manufacturer, worked for 8 years in various financial positions with Black & Decker, the parent company. Most recently he was controller of Black & Decker's Professional Products Division.



McCulloch Corporation officer

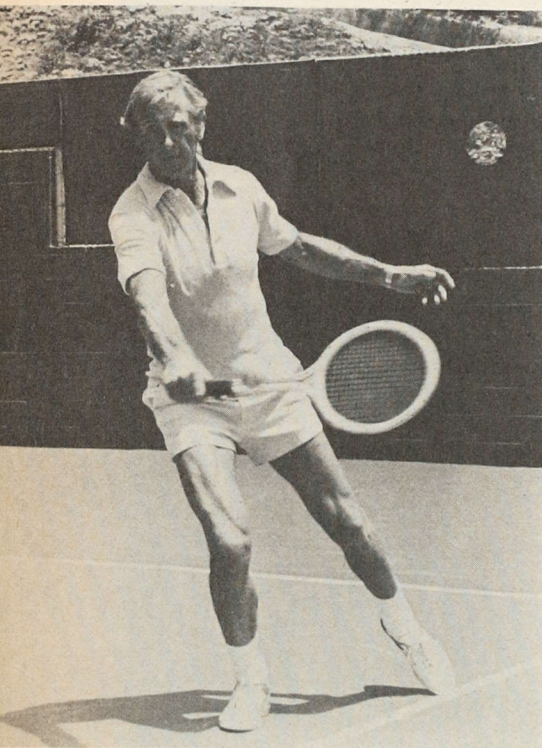
William C. Woodward, **Allegheny '34 (Pennsylvania Omega)**, has been named chairman of the Aluminum Association's executive committee. Woodward, has been with Alcoa for 40 years and has been active in the Aluminum Association for more than ten years. He is currently vice president and assistant to the president of Alcoa.

The Association presents 78 member companies in the U.S. The executive committee reviews projects and the activities of major committees.

Dennis Boaz, Calif. State-Fresno '61 (Iota), fought for the late Gary Gilmore's right to die. Gilmore had hired Boaz to make sure the sentence was fulfilled.

Boaz originally contacted Gilmore to discuss the "selling" of the condemned man's story. They came to a financial agreement and according to Boaz, part of that agreement was for one-half of the profits from the release of the interviews to go to the families of Gilmore's two victims.

Boaz states he believes in the death penalty but says until there is a standard death penalty in all states, all death sentences should be commuted. He said, "if we are really to appreciate life, we have to accept death, we have to recognize it as part of the process."



Celebrity tennis participant

Tennis Benefits M.D.

Lloyd Bridges, UCLA '35 (Delta), along with seven other celebrities is participating in the Lauder's King of the Hill tennis competition. The tournaments pair the best celebrity players with top, club level tennis professionals in a 31-event national circuit which offers \$150,000 in prize money.

The beneficiaries of the tournaments are the Muscular Dystrophy Association and also the Motion Picture and Television Fund. The goal is to raise \$1 mil-

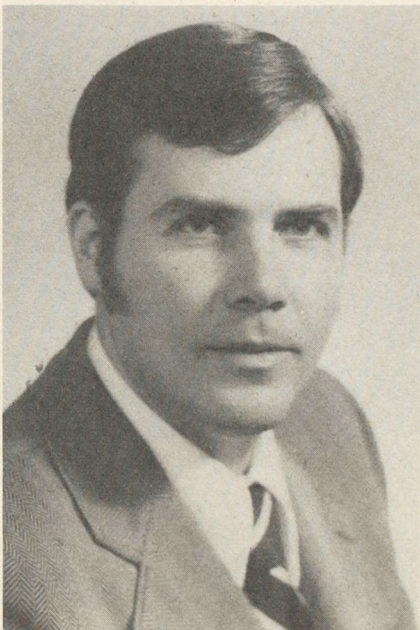
lion to fight muscular dystrophy. The event began May 1, 1976 and will be completed in August of 1977.

Bridges, who became well known as Mike Nelson of Sea Hunt, still is seen in made-for-television films such as "The Fortress," "Tragedy in a Temporary Town," "The People Next Door," and "Silent Night, Lonely Night."

Jack K. Mandel, Allegheny '58 (Pennsylvania Omega) of Anaheim, California, has been elected as a trustee of Allegheny College.

Mandel, an attorney, also teaches sociology at California State-Fullerton and law at Western State University College of Law. He is a member of the Orange County Trial Lawyers Association and in 1973-74 was chosen trial lawyer of the year.

Since 1968 he has been chairman of the Allegheny Alumni Club of Southern California and as a trustee he will serve on the college community committee.

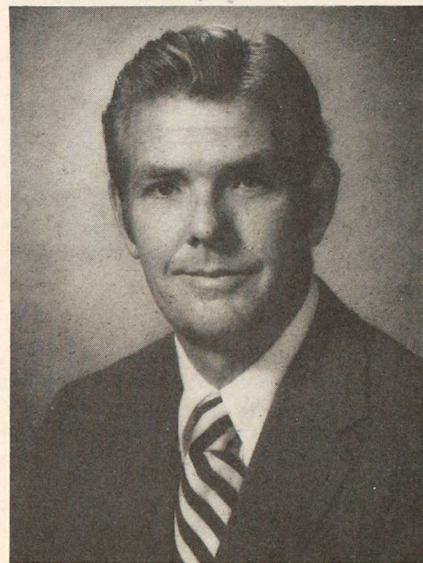


President of trade association

James W. Gee, Jr., Monmouth '63 (Illinois Alpha) was recently elected to the post of President of the Lumber Trade Association of Greater Chicago. He has served the Association as a director for the past eight years and two years as First Vice-President. He is President of Gee Company and operates a chain of 10 retail lumber and hardware stores.

Gee served ΣΑΕ as Province Mu Archon from 1968 to 1970, Province Mu Treasurer from 1966 to 1968 and Province Mu Secretary from 1974 to 1976.

David E. Clark, California-Berkeley '48 (Beta), was recently promoted to vice president and editor of Sunset Books. He joined the staff of Sunset Magazine's editorial department in 1950 and was transferred to Sunset Books in 1959. He became managing editor in 1960 and then executive editor in 1968.



Promoted to vice president

Dean S. Campbell, Jr., Florida '58 (Upsilon), was recently promoted to Vice-President in charge of the Service Corporation, University Federal Savings and Loan Association of Coral Gables, Florida. He was previously a Regional Branch Coordinator in the Savings Division. Campbell was employed by First Federal Savings and Loan Association for 14 years.

He is the past president of the ΣΑΕ Alumni Association of Miami and is a Director of the South Dade YMCA.

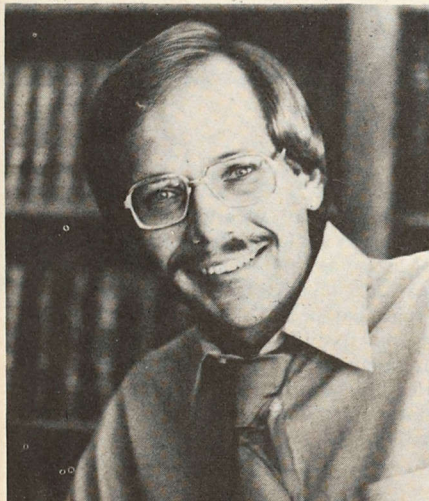
Wendell R. Anderson, Minnesota '56 (Alpha), was appointed Senator of Minnesota to fill the vacancy created by Vice President Walter Mondale. When he moved to Washington, he not only looked for a staff and a house, but also a hockey league.

Anderson has been playing hockey all his life, and he joined the Chesapeake Hockey League. In a recent game, during the second period, the Senator got the puck at the left point, wound up and let go with a 35 foot slap shot. This was the seventh goal in a 10-4 victory for the Washington Olympics. It was the first goal ever, in the league, to be made by a member of Congress.

Lt. Col. David A. Kaiser, Northwestern '62 (Illinois Psi-Omega), has been named a Board Certified Prosthodontist. He is chief of Post Graduate Education in the

Department of Prosthodontics, Dental Services Directorate, at Wilford Hall USAF Medical Center in Texas.

Kaiser has been in the Air Force nine years, and was stationed in Weisbaden, Germany from 1967 to 1970. He earned his Doctor of Dental Sciences Degree at the School of Dentistry at the University of Illinois in Chicago and earned a Master of Science Degree in Dentistry at the University of Washington in 1974.



Imbrecht elected to legislature

Youngest State Legislator

Charles R. Imbrecht, **Occidental '71 (California Epsilon)** was elected to the California State legislature in 1976 and is the youngest member. Imbrecht served with the United States Information Service at the American Embassy in Stockholm, Sweden, in 1970, and as a prosecutor intern for the Los Angeles County District Attorney from 1973 to 1974. In 1974 he was elected to the Ventura County Central Committee and received an honors appointment to the Interstate Commerce Commission. Imbrecht is a native of Ventura County and an inactive partner in the Ventura law firm of Robinson, Melikian and Imbrecht.

Dr. Warren G. Walker, **Colorado State '45 (Delta)**, will this month become President of the American Animal Hospital Association. He is presently associated with the La Canada Pet Clinic, in La Canada, California.

William K. Houston, **Washington '37 (Alpha)**, was recently elevated from president to chairman of the board of Conklin Bros. of California. He is also chairman of the board and acting president of the Bank of Contra Costa in Walnut Creek. Houston was Chairman of the California



Chairman of the Board Houston

State Athletic Commission and in 1970 he was awarded the Outstanding Citizen Award by the Oakland Boys Club. Houston was also the recipient of the City of Hope Award in 1975 and served as director of Easter Seals and John Muir Hospital.



Marketing man of the year

Robert R. Harper, **Southern Methodist '59 (Texas Delta)**, has been named the 1976 Sales and Marketing Man of the Year by the Sales and Marketing Council (SMC) of the National Association of Home Builders (NAHB).

Harper began his career in the housing industry over 17 years ago when he joined Fox & Jacobs. He has held various positions and since 1970 has served as General Sales Manager.

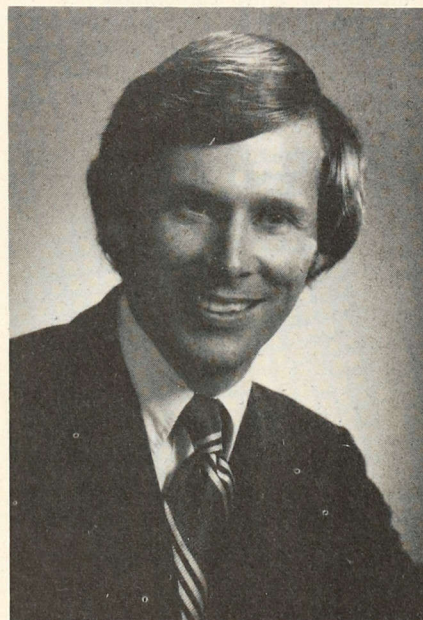
Harper is a frequent speaker at builder's conferences and NAHB Conventions.

Murray H. Davis, **Kansas '50 (Alpha)**, former executive vice-president of Mercantile Bank and Trust Company of Kansas City has been named president of the bank.

Davis joined the bank in 1960 as an assistant vice president. He was previously in the industry as an agent and district manager. Named as senior vice-president in 1965, he has recently been in charge of marketing for the bank and was named executive vice president in 1973.

Jack Meyerhoff, **Ohio Wesleyan '48 (Delta)**, has been appointed vice president for Corporate Affairs at Brunswick Corporation. This appointment is in addition to his present responsibilities as Vice President and Chief Financial Officer.

Meyerhoff's association with Brunswick dates to 1959. He was elected a Corporate Vice President in 1970 and Chief Financial Officer in 1972. Prior to his employment by Brunswick, Meyerhoff was associated with Arthur Andersen & Co.



Roe promoted

William D. Roe, **Oklahoma '66 (Kappa)**, was recently appointed Secretary-Treasurer of Wolff, Morgan & Company. He served more than five years with the CPA firm of Haskins & Sells of Houston and then joined Wolff, Morgan in 1974. Roe, a certified public accountant, received his master of professional accounting degree from the University of Texas in 1969. He is a member of the Texas Society of Certified Public Accountants and its Houston chapter.



Director of Ethyl Corporation

Prime F. Osborn III, **Alabama '36 (Mu)**, president and chief operating and administrative officer of Seaboard Coast Line Industries, Inc., has been elected a director of Ethyl Corporation.

Osborn's election was announced by the chairman of the board of Ethyl. He succeeds W. Thomas Rice, chairman of Seaboard, who has resigned from the Ethyl board after 10 years of service.

Osborn joined the Louisville & Nashville Railroad as general solicitor in 1951. In 1967 he helped effect the merger of the Atlantic Coast Line with the Seaboard Air Line Railroad Company, forming the Seaboard Coast Line Railroad Company. He was named president of Seaboard Coast Line Railroad Company as well as Seaboard Coast Line Industries, Inc., in 1970. In 1972 he assumed the duties of president of Louisville & Nashville Railroad Company. In 1976 he assumed the duties of chief executive officer of both Seaboard Coast Line and L & N railroads.

Osborn is a member of the Greater Jacksonville Chamber of Commerce, Southern States Industrial Council, Jacksonville University and the National Association of Episcopal Schools.

Federal District Court Judge Robert L. Taylor, **Vanderbilt '24 (Tennessee Nu)**, was named the federal judge in the trial of Maryland Governor Marvin Mandel on mail fraud, bribery and racketeering charges.

Taylor has been the judge in several trials of elected officials. He was the presiding judge in the 1972 trial of former Illinois Governor Otto Kerner on charges of fraud bribery and income tax evasion.

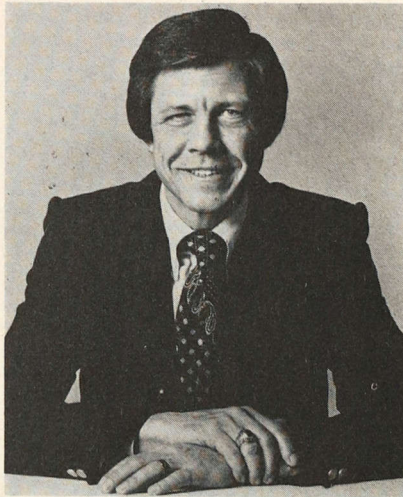
According to the indictment, Mandel is charged with trading his influence and decisions as governor for money and busi-

ness interests from the time he became governor until the time of the indictment.

Taylor has been on the federal bench for 27 years. He was appointed by President Harry S. Truman and has the most current docket of any U.S. District judge in the nation.

Henry H. Perritt, Jr., **M.I.T. '66 (Iota-Tau)**, has been named assistant to the chairman of Consolidated Rail Corp. He previously had been Deputy Under Secretary for Economic Policy Review in the U.S. Department of Labor.

Perritt's duties include setting objectives and direction of Conrail's subsidiaries in relation to the corporation as a whole. Merchants-Dispatch Transportation Corp., Excelsior Truck Leasing Co., Canada Southern Railway Co., and other Canadian companies are among the subsidiaries.



Zola elected president

J. Richard Zola, **Michigan State '56 (Gamma)** has been elected President of Herculite Protective Fabrics Corporation, New York City. The company is an international supplier of hospital, industrial, marine, transportation and upholstery fabrics.

Zola joined the firm in 1968 as Director of Marketing. He was then named Vice President Sales and in January, 1975 was appointed Executive Vice President. In addition, he is a member of the Board of Directors.

As President he will assume full direction of the company's fabric divisions.

Resolution Passed

A resolution recently passed by the Michigan State Senate honored John C. Prost, **Michigan State '58 (Gamma)**, Prost



Prost honored

is president of the Michigan State Association of Life Underwriters.

The resolution, introduced by William B. Fitzgerald, **Western Michigan '64 (Delta)** was unanimously passed. It stated, "John has been a leader and an innovator in the life insurance profession. As president of the state association, it is a pleasure to commend him as one of the most outstanding members of his profession."

Detroit Holds Christmas Party

The Detroit Alumni Association held their annual Christmas party at the Bayview Yacht Club on December 22, 1976. The luncheon saw 67 members in attendance. Several of those in attendance were former Province Omega Archon Bob Jones, Jim Leflar, Archon of Province Omega, Dick Thoma, Province Omega Alumni Secretary and Dick McGrath, Province Omega Deputy Archon.

Christmas party celebrants



chapter news



Pledge class lions

Lions Protect Arizona Beta

The men of **Arizona Beta** at **Arizona State** have recently acquired two lions which they claim are "the two largest Σ AE lions anywhere in the country." The lions purchase was a pledge class project and were dedicated in a formal ceremony last fall.

The lions, which measure 13 feet long, 5 feet wide and 6 feet tall, were purchased from a Σ AE alumnus in Reno, Nevada. The pledge class earned the money through various projects and alumni donations. The total cost, after repairs were completed, was \$1,800. The pledge class president said "this was the greatest one thing we ever did as a pledge class. I think it was quite a feat considering we had only six pledges to initiate the project."

George E. Stuart, **Mississippi '75 (Theta)** of Dallas, Texas has been elected a member of the 1976-77 University of Mississippi Senate.

Stuart is also vice president of the "M" Club, a member of the Judiciary Committee, and a member of the Fellowship of Christian Athletes. He was elected Colonel Rebel for this year, is a three year letterman in football and a member of the "M" scholarship committee.

Brad Dart, **Washington '76 (Alpha)**, of Everett, Washington was killed in an

automobile accident late last year. Three weeks prior to his death, he took out a life insurance policy in which he named his chapter, **Washington Alpha**, as beneficiary. Upon his death, the chapter found he had left them \$22,500.

According to chapter EDA Drew Hedcock, "we hope to set up a scholarship in his honor. He was a good guy."

Minnesota Alpha Parent's Night

Minnesota Alpha at the **University of Minnesota** held their annual Parent's Night Banquet on November 10, 1976. Over 175 parents and chapter members attended the hour and a half program. The purpose of the evening was to introduce the parents to the Fraternity and its goals. The officers were introduced, with an explanation of how their role is interpreted, and the guest speaker for the evening was Eminent Supreme Chronicler James D. Peterson.



Peterson presents plate

A silver Σ AE plate was given to the chapter by the **Minnesota Alpha Alumni Association** in "recognition of excellence in its 75 years at the **University of Minnesota**." The chapter is very proud of the plate for it is the sole plate minted that is owned by a chapter.

Tennessee Beta at **Middle Tennessee State** surpassed all other MTSU organizations in the fund-raising project for **St. Jude's Childrens Hospital** in Memphis. They raised one-fourth of the total amount contributed through community and campus activities. Other projects of which they are proud are the **Civitan Candy Sale**, the **Cerebral Palsy Telethon**, and a **Christmas party** for retarded citizens.

During the fall semester, they also took the coveted interfraternity championship in softball. This spring, interfraternity activities such as election of new officers and initiation of new pledges took place.

Ohio Mu at **Denison University** had a very successful first semester and is expecting the same for the latter half of the year.

As of the close of the semester, the chapter is leading in intramurals and holds the second highest grade point average on campus. They are doing some repair work on the house and also are working in the area of community service. Several of the members are participating in a local **Big Brother** program and two members are currently serving on the **Granville Volunteer Fire Department**.



Arizona Gamma F-team

The men of **Arizona Gamma** at **Northern Arizona** are planning a cocktail party, the proceeds of which will benefit their housing fund. In addition, the chapter once again captured the **Scholarship and Deans Award** during the recent **Greek Week** activities.

A community blood drive was deemed a huge success with the help of the chapter. And finally, the chapter's **F-Team** in intramural basketball, finished the season by losing all six of their games and scoring no more than 25 points in any of them. However, "it was a lot of fun and good times were had by all."

Louisiana Alpha at the University of Southwestern Louisiana achieved the highest grade point average for the 1976 Fall semester. The chapter obtained a 2.75 which is an all-time high for a fraternity on the USL campus.

Number One Scholars

The number one position at Kent State is held by Ohio Lambda. Since 1974 the chapter has risen in numbers from 8 to 40 and they have also risen from number six to number one in scholarship.

In their rise to the top position, the chapter also became involved in the Interfraternity Council (IFC). The current IFC rush chairman is Tim McKinney '79 and vice president is Larry Kappler '77. Jim Aldag '79 has been elected IFC president for next year.

The Winter Quarter pledge class is sponsoring a fund-raising drive and the proceeds will go to the Heart Fund.

And finally, some major improvements are being made on the house. Aluminum siding is replacing the shingle siding and new carpeting, furniture and draperies are being purchased.



Chernenko accepting gavel

Marc B. Chernenko, Bethany '78 (West Virginia Beta), was inaugurated as student body president on February 10. The presentation of the gavel was made by Michael Sieber, Bethany '77 (West Virginia Beta), out-going president.

Idaho Alpha at the University of Idaho has had a very productive first semester and plans the same for the spring term.

The twenty new initiates raised \$500 worth of food for the needy at Thanksgiving and at Christmastime helped decorate Moscow for the holidays. They, in addition to the rest of the chapter, par-

ticipated in a Muscular Dystrophy basketball marathon.

The chapter is very strong in extra-curricular activities, and thirteen members are participating in intercollegiate sports. Rusty Jesser '77 is a student body senator, president of Blue Key and a member of Silver Lance, and in addition, John Croy '76 received the Order of Omega for his outstanding service to the Greek community.

Two pledges of the chapter were initiated posthumously after they were killed in an automobile crash last December. A scholarship fund is being set up in memory of Dave Alsacker and Dirk Curtis for the outstanding freshman of future pledge classes.

Jim Pace '79 said of the tragedy, "The closeness that has developed between the two men's families and Idaho Alpha is something none of us will forget. Brotherhood will never go out of style for Idaho ΣΑΕ's."

California Lambda at California State-Long Beach is in the lead for the intramural trophy. Victories in football and the Little Sister participation in co-ed events has greatly helped. According to the chapter, "no other fraternity on campus has been able to muster this kind of co-ed support."

A Christmas formal was held at the Disneyland Hotel and was a huge success, once again due to the tremendous effort of the Little Sisters. The chapter also participated in the Founders' Day Banquet held March 11 on the Queen Mary sponsored by Province Chi.

The men of Pennsylvania Alpha-Zeta at Pennsylvania State participated in the Interfraternity Council's Dance Marathon. Mark Christie '79 and Tim Barr '77 served on the marathon committee and Robert Bickhart '78 danced for 48 hours. A total of \$29,000 was raised for the Four Diamonds Cancer Fund.

Pennsylvania Omega at Allegheny College had five returning All-American swimmers participating in the recent Division III Championships. They were Marty Pfinsgraff '77, Bart McDermott '78, Ron Morosky '78, Rich Sinclair '77, and Lee Masquelier '79. They hoped to return Allegheny to a ranking in the top ten.

McDermott was recently elected IFC president and the chapter reports a strong pledge class of 22.

Rob Lukemeyer, DePauw '78 (Indiana Delta), was elected student body president on February 24. Lukemeyer won with over 50% of the 938 votes cast. He outdistanced the competition by more than two to one.

Keeping with the ΣΑΕ tradition at Middle Tennessee State, the men of Tennessee Beta once again captured the University's All-Sing competition. During their sixth consecutive win, the chapter sang a medley of songs from the Depression era arranged by Ron Fryar '73.

In addition, for the second consecutive year, the chapter captured the softball championship after an undefeated season. They hope once again to capture the Greek and campus All-Sports championship.

And finally, three Tennessee Beta Little Sisters were in the running for homecoming queen. Kay Harlan, one of the Little Sisters, captured the crown.



Middle Tennessee queen

A new directory policy has been established. A full directory will be printed three times a year and is available upon request from the National Office. An abbreviated version of the directory will appear in each issue of the RECORD.

Requests for directories should be addressed to:

Directory Service
Sigma Alpha Epsilon
P.O. Box 1856
Evanston, IL 60204

chapter eternal



Founder 229 dies

Kenneth E. Oakley

Memorial services were held September 13, in Rancho Bernardo, California for Kenneth Enoch Oakley, **Youngstown '25 (Ohio Alpha)**, who died September 11, 1976 in Escondido, Ca. at the age of 73.

Oakley founded the firm of Oakley and Gethmann, Certified Public Accountants of Evanston, Illinois, 30 years ago. While residing in Evanston, Oakley was a life member of the Evanston Historical Society, a member of the Rotary Club of Evanston, the University Club, the Illinois Society of CPA's and the American Institute of CPA's. Oakley and his wife, Elizabeth, moved to Rancho Bernardo in 1974 after he retired as senior partner of the firm.

Oakley was Founder Member 229 of The Levere Memorial Foundation. The firm of Oakley and Gethmann is retained by the ΣAE National Headquarters for accounting and auditing services.

Frank C. Hale

Frank C. Hale, **George Washington '27 (Washington City Rho)** of Arlington, Virginia, died September 1, 1976 of aplastic anemia. The retired Federal Trade Commission (FTC) official was 70.

Until his retirement in 1970, Mr. Hale was head of the FTC bureau which investigated companies accused of deceptive

practices. He began his work with the agency in 1928 and his positions included, special legal assistant to the commission, legal advisor on anti-monopoly, assistant general counsel, program review officer, and deputy executive director.

From 1963-65, Mr. Hale served as special deputy attorney general of Hawaii. During that time he was involved in anti-trust and consumer protection. He received the FTC Distinguished Service Award.

After his retirement, he did volunteer work for the Arlington Consumer Protection Commission.

Joseph Uzdavinis

Joseph Uzdavinis, **Cornell '51 (New York Alpha)**, of Old Forge, New York died November 15, 1976.

Mr. Uzdavinis was part owner of the Enchanted Forest and president of radio station WADR. He and Richard Cohen started the Enchanted Forest as a tourist attraction. It also depicted many children's stories and has hosted circus acts such as the Great Wallendas and Tarzan Zerbini.

Mr. Uzdavinis was president of the Central Adirondack Association, a member of the Lions Club, co-chairman of the steering committee for the Old Forge Citizens Groups and a member of St. Bartholomew's Church.

Harry Hansen

Harry Hansen, **Chicago '09 (Illinois Theta)** of Scarsdale, New York died January 2, 1977. Mr. Hansen was vice president of Hastings House Publishing Company, former literary critic for the *New York World Telegram* and editor of *The World Almanac*.

Hansen, born in Davenport Iowa, was also a writer and war correspondent for *The Chicago Daily News*, reporting from the front between 1914 and 1916 and later from Paris in 1919.

He was editor of *The World Almanac* from 1949 to 1965 and became a vice president of Hastings House in 1965. In addition he wrote several books including *North of Manhattan* and *Scarsdale: From Colonial Manor to Modern Community*. His first novel, entitled *Your Life Lies Before You*, was an autobiographical work about the dreams of a young Iowa boy who becomes a newspaperman in his hometown and later Chicago.

Most of his books were well received in literary circles. But he also edited several historical books including *All Quiet on the Western Front*.

William K. Niemann

William K. Niemann, **Michigan '17 (Iota-Beta)** of Sun City, Arizona died recently of a heart attack.

Mr. Niemann was a 33-year employee of The Bankers Life and served as a salesman, supervisor and agency manager of their Des Moines office. In addition he received the Des Moines Tribune Community Award in 1946.

At the time of the Tribune Award it was said, in "virtually every major campaign conducted here for benefit of a civic, educational or charitable project—all without compensation" he was cited. He served as chairman of the March of Dimes polio fund drive, chairman of the first USO campaign, finance chairman of the Des Moines Boy Scouts, member of the board of the Iowa Society for Crippled Children, member of the Drake Relays Committee and chairman of numerous Drake football and basketball ticket campaigns.

He also was a member of the Des Moines Chamber of Commerce, Wakonda Club and Za-Ga-Zig Shrine.

Lt. John M. Mallan, **North Carolina State '71 (Alpha)**, of Hickory, N.C. was killed recently in an airplane crash at Fort Campbell, Kentucky.

Mallan and his navigator were taking off on a routine cross country navigation flight. The crash occurred shortly after take-off and a Navy investigation board is investigating the crash.

Mallan received his commission after graduation from the Naval Officer Candidate School at the Naval Air Station in Pensacola, Florida. While training in Pensacola, he was named Air Cadet of the Year and at North Carolina State he was affiliated with the Navy ROTC program.

ALLEGHENY (Pa. Omega)

John W. Clemens, '18, of Lincoln, Nebraska, on June 17, 1976.

George T. Dornhoffer, Jr., '39, of Ham-burg, N.Y., on January 28, 1977.

Fred D. Gealey, '16, of Dallas, Texas, on December 15, 1976.

Karl R. McBride, Jr., '34, of Glen Falls, N.Y., on May 10, 1976.

Louis A. Miller, '20, of Coral Gables, Florida, on January 2, 1977.

Kenneth C. Powell, '36, of Troy, Pa., on March 11, 1976.

Jack A. Ungerman, '33, of Erie, Pa., on April 1, 1976.

Charles W. White, '30, of Hartsville, S.C., on July 14, 1976.

ARKANSAS (Alpha-Upsilon)

James D. Head, '25, of Chicago, Illinois, on February 11, 1977.

BALL STATE (Ind. Zeta)

Robert A. Morris, '72, of Noblesville, Ind., on August 3, 1976.

BUCKNELL (Pa. Zeta)

Russell K. Appleby, '37, of Harrisburg, Pa., on June 3, 1976.

Rowland H. Coleman, '29, of Fairfield, Conn., on July 15, 1976.

CALIFORNIA-LOS ANGELES (Delta)

Andrew J. Hamilton, '35, of Los Angeles, Calif., on April 8, 1976.

CALIFORNIA STATE-LONG BEACH (Lambda)

Clifford C. Harrod, '22, of Seal Beach, Calif., on January 17, 1977.

CASE WESTERN RESERVE (Ohio Rho)

Thomas J. McCausland, '23, of Highland Beach, Florida, on December 6, 1976.

CENTRE (Ky. Kappa)

William E. Gray, '24, of Lexington, Ky., on September 22, 1976.

CHICAGO (Ill. Theta)

James E. Foster, '10, of Tucson, Arizona, on January 28, 1977.

Paul E. Foster, '32, of Litchfield Park, Arizona, on February 18, 1976.

Harry Hansen, '09, of Mt. Vernon, N.Y., on January 2, 1977.

Clifford E. Randall, Jr., '35, of Omaha, Nebraska, on April 8, 1976.

CINCINNATI (Ohio Epsilon)

George H. Landis, '17, of Sarasota, Florida, on December 23, 1976.

COLORADO SCHOOL OF MINES (Lambda)

Albert W. Smith, '14, of Youngstown, Ohio, on September 27, 1976.

Archibald A. Sproul, Jr., '26, of Golden, Colo., on October 1, 1976.

COLORADO STATE (Delta)

Albert E. Goodwin, Jr., '34, of Fort Collins, Colo., on December 9, 1976.

Richard J. Lawrence, '22, of Littleton, Colo., on January 1, 1977.

CORNELL (N.Y. Alpha)

George E. Munschauer, '27, of Buffalo, N.Y., on December 27, 1976.

Joseph Uzdavinis, '51, of Old Forge, N.Y., on November 15, 1976.

CUMBERLAND (Tenn. Lambda)

Henry C. Barry, '26, of Nashville, Tenn., on November 6, 1976.

James J. Shannon, '19, of Richmond, Ky., on December 13, 1976.

Judge August W. Wilde, '29, of Jackson, Tenn., on January 7, 1977.

DENISON (Ohio Mu)

James P. Kridler, '50, of Birmingham, Mich., on August 30, 1976.

Russel T. Raymer, Jr., '46, of Coshoc-ton, Ohio, on October 20, 1976.

Victor G. Weaver, '22, of Toledo, Ohio, on February 20, 1977.

DENVER (Colo. Zeta)

George F. Harsh, '25, of Arvada, Colo., on February 12, 1977.

DICKINSON (Pa. Sigma-Phi)

William T. Cheesman, III, '56, of Ormond Beach, Fla., on June 1, 1976.

Gerald E. Kaufman, '40, of New Cumberland, Pa., on July 3, 1976.

DRAKE (Iowa Delta)

Frederick S. Alexander, '19, of Fort Dodge, Iowa, on February 21, 1976.

Robert C. Waterman, '32, of San Diego, Calif., on December 5, 1976.

Roger F. Wennerstrum, '50, of Des Moines, Iowa, on February 1, 1977.

Chance Williams, '38, of Sioux City, Iowa, on November 13, 1976.

FLORIDA (Upsilon)

Robert M. Holley, '34, of East Williston, N.Y., on January 4, 1977.

Ben C. McGahey, '39, of Orlando, Florida, on January 18, 1977.

Leo J. Thomas, '26, of Gainesville, Florida, on March 27, 1976.

FLORIDA SOUTHERN (Gamma)

Stephen D. Thomason, '69, of Atlanta, Georgia, on September 24, 1976.

GEORGE WASHINGTON (W.C. Rho)

Eugene B. English, '21, of Peoria, Illinois, on December 31, 1976.

GEORGIA (Beta)

Marion B. Alexander, '22, of Charleston, S.C., on October 11, 1976.

Arthur C. Beall, '17, of Atlanta, Georgia, on November 7, 1976.

Auville Eager, '12, of Baltimore, Md., on August 13, 1976.

Joe P. Legg, '25, of Marietta, Georgia, on November 22, 1976.

GEORGIA TECH (Phi)

George L. Maree, '31, of Marietta, Georgia, on November 20, 1976.

Hugh M. McElrath, '30, of Sandersville, Georgia, on September 14, 1976.

GETTYSBURG (Pa. Delta)

Michael S. J. Stoney, '17, of Bala Cynwyd, Pa., on December 23, 1976.

HARVARD (Mass. Gamma)

Homer P. Griffin, '11, of Wellesley, Mass., on November 25, 1976.

Albert C. Kelly, '44, of Bristow, Okla., on January 3, 1977.

Dr. Eric Stone, '15, of Manchester, N.H., on June 1, 1976.

Willett Wilson, Jr., '24, of Houston, Texas, on January 12, 1977.

IDAHO (Alpha)

Dr. Earl C. Hall, '12, of Laurel, Mont., on December 6, 1976.

ILLINOIS (Beta)

Wilbur L. Edholm, '26, of West York, Illinois, on August 15, 1976.

INDIANA (Gamma)

Raymond L. Moyer, '26, of Indianapolis, Ind., on January 15, 1977.

IOWA (Beta)

J. Elliot Davis, '23, of Cedar Rapids, Iowa, on June 23, 1976.

William B. Hurlburt, '15, of Des Moines, Iowa, on December 24, 1976.

KANSAS (Alpha)

E. Kirk Hilton, '15, of Denver, Colo., on February 15, 1977.

William G. Kern, '42, of Casper, Wyo., on October 17, 1976.

KENTUCKY (Epsilon)

Joel N. Stallins, '59, of Panama City, Florida, on July 4, 1976.

William L. Webb, '33, of Flossmoor, Ill., on January 5, 1977.

LOUISIANA STATE (Epsilon)

James W. Sasser, '47, of Pelham Manor, N.Y., on January 14, 1977.

John M. Swearingin, '75, of Shreveport, La., on December 28, 1976.

MASSACHUSETTS (Kappa)

Michael J. Phillips, '74, of Potsdam, N.Y., on November 5, 1976.

M.I.T. (Iota-Tau)

Herbert C. Button, '20, of Manlius, N.Y., on October 4, 1976.

MEMPHIS STATE (Tenn. Sigma)

Paul M. Gingold, '75, of Memphis, Tenn., on January 14, 1977.

MERCER (Ga. Psi)

Samuel J. Corbin, '29, of Charleston, S.C., on June 1, 1976.

Dr. Erle D. Sellers, '16, of Abilene, Texas, on November 18, 1976.

Willie B. Smith, '15, of Tennille, Georgia, on April 16, 1976.

MICHIGAN (Iota-Beta)

Frederick N. Windsor, '35, of Pittsburgh, Pa., on August 3, 1976.

MICHIGAN STATE (Gamma)

Wallace K. Wonders, '31, of Grosse Pointe, Mich., on January 6, 1977.

MILLIKIN (Ill. Delta)

Harold T. McClain, '29, of Decatur, Illinois, on September 24, 1976.

MINNESOTA (Alpha)

Clarke J. Carson, '11, of Sun City, Calif., on January 5, 1977.

Dr. Reuben A. Pirsch, '24, of San Marcos, Calif., on January 31, 1977.

Stanley G. Stocking, '54, of Minneapolis, Minn., on February 1, 1977.

MISSISSIPPI (Gamma)

Dr. Max L. Golden, '42, of Laurel, Miss., on January 23, 1977.

Dr. William E. Vandevere, '13, of El Paso, Texas, on January 18, 1977.

MISSOURI (Alpha)

Thomas D. McKee, '55, of Liberty, Missouri, on December 28, 1976.

Eugene O. Petty, '19, of Liberty, Missouri, on July 10, 1976.

MONTANA (Beta)

Col. William W. Whitehead, '36, of Tazewell, Tenn., on May 22, 1976.

MONTANA STATE (Alpha)

Robert E. McConnell, '21, of Walnut Creek, Calif., on November 23, 1976.

Walter J. Needham, '20, of Anaconda, Montana, on September 11, 1976.

MOUNT UNION (Ohio Sigma)

Frank A. Aultz, '51, of Euclid, Ohio, on January 24, 1977.

William E. Calhoun, '25, of Boca Raton, Florida, on January 12, 1977.

NEBRASKA (Lambda-Pi)

John D. Neff, '23, of Staunton, Virginia, on July 3, 1976.

Rex A. Smith, '24, of Evanston, Illinois, on January 27, 1977.

NEVADA (Alpha)

Murven A. Bryant, '26, of Bridgeport, Calif., on January 10, 1977.

John P. Thatcher, '26, of Reno, Nevada, on February 6, 1977.

NORTH CAROLINA (Xi)

Willie J. Long, '14, of Garysburg, N.C., on March 2, 1976.

OHIO STATE

Albert A. Maynard, '34, of Grosse Pointe Woods, Mich., on December 20, 1976.

OHIO WESLEYAN (Delta)

John E. Nordin, '38, of Tucson, Arizona, on December 16, 1976.

OKLAHOMA STATE (Mu)

John H. Baugh, Jr., '35, of Meeker, Okla., on December 10, 1976.

Leslie D. Conn, '38, of Austin, Texas, on April 1, 1976.

Vernon Hawes, '34, of Tulsa, Okla., on January 12, 1977.

Donald F. Hudson, '44, of Pawnee, Okla., on March 15, 1976.

OREGON (Beta)

Edgar H. Kamna, '24, of Tigard, Oregon, on January 29, 1977.

OREGON STATE (Alpha)

Charles W. Williams, '19, of San Jose, Calif., on October 2, 1976.

Foster K. Tynan, '32, of Shandon, Calif., on October 29, 1976.

PENNSYLVANIA (Theta)

Gemmill C. Davis, '21, of Camp Hill, Pa., on September 3, 1976.

PENNSYLVANIA STATE (Alpha-Zeta)

James E. Cootes, '69, of Harrisburg, Pa., on October 20, 1976.

George P. Cruikshank, '45, of Pittsburgh, Pa., on April 10, 1976.

Russell A. Lawless, '53, of Upland, Pa., on February 11, 1977.

Maj. William R. Pentz, '18, of New Bloomfield, Pa., on November 23, 1976.

W. Albert Rinckenbach, '22, of Villanova, Pa., on July 26, 1976.

PITTSBURGH (Pa. Chi-Omicron)

William J. Dillon, '44, of Beachview, Pa., on December 26, 1976.

PURDUE (Ind. Beta)

Richard C. Morgan, '36, of Des Moines, Iowa, on January 2, 1977.

Robert A. Morris, '49, of Noblesville, Ind., on August 2, 1976.

SAINT LAWRENCE (N.Y. Rho)

Albert T. Scully, '30, of Westport, Conn., on February 2, 1976.

SAN DIEGO STATE (Calif. Theta)

R. Desmond McNary, '50, of La Mesa, Calif., on January 8, 1977.

SOUTH, UNIVERSITY OF (Tenn. Omega)

George D. Beall, Jr., '56, of Sweetwater, Texas, on October 6, 1976.

Rev. William S. Stoney, '20, of Saluda, N.C., on December 29, 1976.

SOUTH CAROLINA (Delta)

Henry L. Forbes, Jr., '32, of Pawleys Island, S.C., on January 1, 1977.

SOUTH DAKOTA (Sigma)

Dr. Gerald R. Collins, '18, of Vermillion, S.D., on April 30, 1976.

Lee H. Cope, '25, of Yankton, S.D., on July 5, 1976.

Marvin H. Kriens, '28, of Bakersfield, Calif., on December 31, 1976.

SOUTHERN CALIFORNIA (Gamma)

Larry T. Yeths, '56, of Sun City, Calif., on March 23, 1976.

STANFORD (Calif. Alpha)

Charles B. Warner, '30, of El Cerrito, Calif., on April 28, 1976.

SYRACUSE (N.Y. Delta)

Robert C. Addison, '34, of Norfolk, Virginia, on December 12, 1976.

Jonathan J. Headley, '69, of Cambridge, Mass., on October 4, 1976.

TENNESSEE (Kappa)

George E. Chambliss, '21, of Winter Haven, Florida, on June 27, 1976.

Edgar M. Cheely, '40, of Indiana, Pa., on January 31, 1977.

Elmer Williams, '21, of Placentia, Calif., on January 5, 1977.

TEXAS (Rho)

George W. Smith, '28, of Houston, Texas, on July 7, 1976.

TEXAS-EL PASO

Herbert D. Minton, '52, of Los Alamitos, Calif., on May 13, 1976.

TOLEDO (Ohio Nu)

James P. Falvey, '27, of Toledo, Ohio, on February 19, 1977.

UNION (Tenn. Eta)

James O. Kelley, '48, of Jackson, Tenn., on November 7, 1976.

VANDERBILT (Tenn. Nu)

Neil H. Cargile, '26, of Nashville, Tenn., on December 30, 1976.

James R. Crutchfield, '25, of Murfreesboro, Tenn., on March 28, 1976.

Alfred W. Taylor, '48, of Milligan College, Tenn., on October 16, 1976.

VERMONT (Beta)

Donald G. Lehmann, '41, of Haverhill, N.H., on November 17, 1976.

VIRGINIA (Omicron)

James K. Herold, '43, of Washington, D.C., on January 2, 1977.

WASHINGTON (Alpha)

Albert S. Balch, '26, of Seattle, Wash., on September 20, 1976.

Bradford J. Dart, '76, of Everett, Wash., on November 23, 1976.

Wayne C. Sutton, '14, of Seattle, Wash., on November 13, 1976.

WASHINGTON STATE (Beta)

George Babich, '39, of Clinton, Indiana, on June 9, 1976.

Patrick W. Bauer, '71, of Ritzville, Wash., on August 19, 1976.

Harry J. Porter, '29, of Spokane, Wash., on May 17, 1976.

WEBER STATE (Utah Sigma)

Glen R. Kirby, '76, of Kaysville, Utah, on April 23, 1976.

WILLIAM & MARY (Va. Kappa)

Elijah B. Moffitt, '23, of Richmond, Virginia, on October 30, 1976.

WISCONSIN (Alpha)

Charles A. Wilger, '16, of Laguna Hills, Calif., on April 30, 1976.

WOFFORD (S.C. Gamma)

John M. Wilkins, II, '65, of Falls Church, Va., on November 10, 1976.

WORCESTER TECH (Mass. Delta)

Philip H. Brakeley, '11, of Manchester, N.H., on January 25, 1977.

James C. Irish, '25, of Brattleboro, Vermont, on May 29, 1976.

Billie A. Schmidt, '39, of Novato, Calif., in June, 1976.

Sidney T. Swallow, '16, of DeBary, Florida, on May 30, 1976.

William C. Thurston, '16, of Clearwater, Florida, on December 7, 1976.

Herbert R. Wittig, '27, of Tampa, Florida, on June 10, 1976.

WYOMING (Alpha)

William C. Rymer, '27, of San Diego, Calif., on October 23, 1976.

YOUNGSTOWN (Ohio Alpha)

Kenneth E. Oakley, '25, of San Diego, Calif., on September 11, 1976.

In Memoriam

Memorial gifts to The Levere Memorial Foundation are used to beautify and maintain The Levere Memorial Temple in Evanston, Ill., and to enlarge endowments for members' services such as student loans, tutorial assistance, libraries and others.

The Foundation and the Fraternity are grateful for the special contributions in remembrance of ΣAE Brothers and friends of ΣAE. Memorial contributions can be sent to Jack R. Hotaling, Secretary, The Levere Memorial Foundation, P.O. Box 1856, Evanston, Illinois 60204.

Contributions have recently been received in memory of:

John Baugh by John C. Banta

Jay S. Beck

Robert L. Cousins

Paul B. Jacob, Jr.

Edley H. Jones, M.D.

Dan K. Borchardt by Mr. & Mrs. Dossett McCullough

Robert M. Holley, Sr. by Robert M. Holley, Jr. (Son)

Rex A. Smith by Jay S. Beck

Mrs. Kenneth E. Oakley

William W. Whitehead by Mrs. William W. Whitehead (Wife)

directory

The Supreme Council

Eminent Supreme Archon: RUSSELL P. HEUER, JR., Pennsylvania '55 (Theta), 226 W. Rittenhouse Sq., Philadelphia, PA 19103.
Eminent Supreme Deputy Archon: DR. LOUIS E. SMITH, Drake '51 (Iowa Delta), 108 North J St., Indianola, IA 50125.
Eminent Supreme Warden: RICHARD F. GENERELLY, George Washington '47 (Wash. City Rho), 1700 K St. N.W., Washington, DC 20006.
Eminent Supreme Herald: DR. RICHARD L. MOORE, Texas-El Paso '66 (Gamma), 5613 South 111th St., Omaha, NE 68137.
Eminent Supreme Chronicler: JAMES D. PETERSON, Minnesota '57 (Alpha), 1750 Hennepin Ave., Minneapolis, MN 55403.
Collegiate Council Chairman: RICHARD H. KELLEY, Western Kentucky '76 (Beta), 713 McElroy, Bowling Green, KY 42101.

Honorary Eminent Supreme Archon

W. CRAWFORD McLAUGHLIN, Denver '19 (Colo. Zeta), 765 S. Clayton, Denver CO 80209.

The National Office

1856 Sheridan Rd., P.O. Box 1856, Evanston, IL 60204, Telephone: Area Code 312-475-1856.
Eminent Supreme Recorder: JACK R. HOTALING, Syracuse '53 (N.Y. Delta).
Director of Finance and Development: GEOFFREY C. WOIE, Minnesota '75 (Alpha).
Director of Programming: KENNETH D. TRACEY, Eastern N.M. '69 (N.M. Alpha).
Director of Extension: KARL E. WONDRAK, III, Northern Colorado '73 (Alpha).
Educational and Leadership Consultants: MICHAEL E. GARROLD, Allegheny '76 (Pa. Omega); JAMES P. HAMLIN, Northern Arizona '75 (Gamma); KEVIN M. NAGLE, Calif. State-Long Beach '76 (Lambda); TIM D. TOLAN, Oregon State '73 (Alpha).
Publications and Office Coordinator: BARBARA D. SEARLE.
Editor of *The Record*: DR. JOSEPH W. WALT, Tennessee '47 (Kappa), Simpson College, Indianola, IA 50125.

Living Past Eminent Supreme Archons

EMMETT B. MOORE, Mont. State '24 (Mont. Alpha), 1949-1951, 296 Circle Dr., Panorama City, Olympia, WA 98503.
DR. ROBERT R. AURNER, Iowa '20 (Iowa Beta), 1951-1953, P.O. Box 3434, Carmel, CA 93921.
DR. CHESTER D. LEE, Iowa State '27 (Iowa Gamma), 1953-1955, 111 Lynn Ave. #904, Ames, IA 50010.
LEO S. CADE, Oklahoma '22 (Okla. Kappa), 1957-1959, 402 W. Oklahoma, Anadarko, OK 73005.
HOWARD P. FALLS, Richmond '33 (Va. Tau), 1959-1961, 815-817 West Broad St., Richmond, VA 23220.
DR. GLEN T. NYGREEN, U. of Wash. '39 (Wash. Alpha), 1963-1965, 97 Highland Road, Scarsdale, NY 10584.
GURNETT STEINHAEUER, Denver '31 (Colo. Zeta), 1965-1967, 3264 S. Oneida Way, Denver, CO 80224.
ROY L. MILLER, Drake '27 (Iowa Delta), 1967-1969, 621 41st St., Des Moines, IA 50312.
PAUL B. JACOB, JR., Miss. State '44 (Miss. Theta), 1969-71, Box 5252, Mississippi State, MS 39762.
ROBERT VAN BLARICOM, Ohio State '33 (Ohio Theta), 1971-1973, 527 Lodge Lane, Kalamazoo, MI 49009.
JOSEPH A. MANCINI, Cincinnati '35 (Ohio Epsilon), 1973-1975, 355 Valley Dr., Brisbane, CA 94005.

Board of Trustees

GEORGE T. ILSE, Syracuse '49 (N.Y. Delta), President (1979), 500 Fifth Ave., #1125, New York, NY 10036.

Extension Investigation Committee

ROY L. MILLER, Drake '27 (Iowa Delta), Chairman, 621-31st St., Des Moines, IA 50312.

Counsel for Fraternity

NORMAN H. PRITCHARD, Franklin '04 (Ind. Alpha), Vedder, Price, Kaufman & Kammholz, 115 S. LaSalle St., Chicago, IL 60603.

Committee on Chapter Housing

RICHARD F. GENERELLY, George Washington '47 (W.C. Rho), Chairman, 1700 K St., N.W., Washington, DC 20006.

Educational Advisor

GEORGE R. HAMRDLA, Stanford '60 (Calif. Alpha), Box 2683, Stanford, CA 94305.

Committee on National Laws

NORMAN H. PRITCHARD, Franklin '04 (Ind. Alpha), Chairman, Vedder, Price, Kaufman & Kammholz, 115 S. LaSalle St., Chicago, IL 60603.

Leadership School Planning Committee

THOMAS R. KESSLER, Kent State '61 (Ohio Lambda), Chairman, 43 East 10th #2D, New York, NY 10003.

Leverie Memorial Temple Building

Committee

WARREN E. GRIMSLEY, Western Michigan '31 (Mich. Delta), Chairman, 2747 Hurd Ave., Evanston, IL 60201.

Advisory Council of The Leverie

Memorial Foundation

NORMAN H. PRITCHARD, Franklin '04 (Ind. Alpha), (1981), Chairman, Vedder, Price, Kaufman & Kammholz, 115 S. LaSalle St., Chicago, IL 60603.

Leverie Memorial Temple Chaplain

DR. ERSKINE M. JEFFORDS, Syracuse '18 (N.Y. Delta), 9517 Lincolnwood Drive, Evanston, IL 60203.

Artist of The Leverie Memorial Temple

ERALDO CARUGATI, Simpson '41 (Iowa Sigma), 1567 Ridge Ave., Evanston, IL 60201.

25 Provinces and 185 Chapters

In corresponding with Chapters address letters "Eminent Archon," "Eminent Correspondent," etc.

Province Archons

ALPHA—GERALD J. ALLEYNE, 273 Chestnut St., Lynn, MA 01902.
BETA—Q. TODD DICKINSON, 380 Jefferson Dr., Pittsburgh, PA 15228.
GAMMA—JAMES G. SAKERS, 4613 Calvert Rd., #10, College Park, MD 20740.
DELTA—RICHARD M. KIMBLER, 265 Empring St., Cincinnati, OH 45219.
EPSILON—W. CHARLES WITZLEBEN, 3064 Antler Trail, Marietta, GA 30062.
ZETA—JOHN F. MILLER, 6501 Highway 9, Parkville, MO 64152.
ETA—J. CLARKE HOUSTON, III, 715 Franklin St., Denver, CO 80218.
THETA—M. RONALD DOLEAC, 701 South 17th Ave., Hattiesburg, MS 39401.
IOTA—K. MARTIN HUFFMAN, 314 Tippett Ave., Morehead, KY 40351.
KAPPA—DANIEL CASTILLO, 2118 N. Garden, Fresno, CA 93703.
LAMBDA—PORTER P. UNDERWOOD, 10125 S.W. Old Orchard Ln., Portland, OR 97225.

MU—JOHN E. McCOY, 3387 MacArthur Rd., Decatur, IL 62526.
NU—WALTER B. BULL, JR., 750 Old Lancaster Rd. #409B, Berwyn, PA 19312.
NU-EPSILON—THOMAS M. L. GILLESPIE, 301 E. Heather Dr., Key Biscayne, FL 33149.
XI—(To be elected).
OMICRON—DAVID A. COVERT, 2361 Camelia St., Cayce, SC 29033.
PI—RICHARD A. DANIELS, 4761 Dalebridge Rd., #E-4, Warrensville Hts., OH 44128.
RHO—RONALD F. EBNER, 506-18th Ave., So., Fargo, ND 58102.
SIGMA—JOHN K. MOTT, 2217 South W St., Ft. Smith, AR 72901.
TAU—LOREN J. BOONE, 502-8th Ave., Brookings, SD 57006.
UPSILON—CHARLES A. PINEDA, 2133 Calle de Sebastian, Santa Fe, NM 87501.
PHI—LARRY G. BREWER, 1120 Gerald, Missoula, MT 59801.
CHI—WALTER G. DEAGUERO, 626 N. Howard #15, Montebello, CA 90640.
PSI—DARRELL W. GIBSON, 604 W. Charles, Muncie, IN 47305.
OMEGA—JAMES H. LEFLAR, 16524 Trinity, Detroit, MI 48219.

The Chapters

ALA. ALPHA-MU (Auburn), 550 West Magnolia Ave., Auburn, AL 36830.
ALA. IOTA (Birmingham-Southern), BSC Box A53, Birmingham, AL 35204.
ALA. MU (Alabama), Box BF, University, AL 35486.
ALA. CHI (South Alabama), 275 Bayfront Dr., Mobile, AL 36605.
ARIZ. ALPHA (Arizona), 1509 E. 2nd St., Tucson, AZ 85719.
ARIZ. BETA (Ariz. State), 706 Alpha Dr., Tempe, AZ 85281.
ARIZ. GAMMA (Northern Ariz.), CU Box 7679, Flagstaff, AZ 86011.
ARK. ALPHA-UPSILON (Arkansas), 110 Stadium Dr., Fayetteville, AR 72701.
ARK. BETA (Arkansas-Little Rock), 3122 S. Taylor, Little Rock, AR 72204.
CALIF. ALPHA (Stanford), P.O. Box 6507, Stanford, CA 94305.
CALIF. BETA (Calif.-Berkeley), 2722 Bancroft Way, Berkeley, CA 94704.
CALIF. GAMMA (U.S.C.), 833 W. 28th St., Los Angeles, CA 90007.
CALIF. DELTA (U.C.L.A.), 655 Gayley, Los Angeles, CA 90024.
CALIF. EPSILON (Occidental), 4909 Rangeview Ave., Los Angeles, CA 90042.
CALIF. ZETA (San Jose State), 296 South 10th St., San Jose, CA 95112.
CALIF. ETA (Calif.-Santa Barbara), 6553 Cordoba, Goleta, CA 93017.
CALIF. THETA (San Diego State), 5076 College Pl., San Diego, CA 92115.
CALIF. IOTA (Calif. State-Fresno), 1469 E. Joyal Dr., Fresno, CA 93710.
CALIF. KAPPA (Calif.-Davis), 521 Russell Blvd., Davis, CA 95616.
CALIF. LAMBDA (Calif. State-Long Beach), 4041 E. 4th St., Long Beach, CA 90814.
CALIF. MU (Calif. State-Los Angeles), c/o Univ. Union, 5151 State Univ. Dr., Los Angeles, CA 90032.
CALIF. NU (Calif. State-Northridge), 17800 Plummer St., Northridge, CA 91324.
CALIF. XI (Calif. State-Sacramento), 790 Fulton Ave., Sacramento, CA 95825.
CALIF. PI (Calif. State-Fullerton), 2101 Teri Pl., Fullerton, CA 92631.
CALIF. RHO (Univ. of Pacific), 819 Fraternity Cir., Stockton, CA 95211.
CALIF. SIGMA (San Francisco), 2130 Fulton St., San Francisco, CA 94118.
COLO. ALPHA (Northern Colo.), 814 19th St., Greelev, CO 80631.
COLO. DELTA (Colo. State), 306 W. Laurel St., Fort Collins, CO 80521.
COLO. ZETA (Denver), 2050 S. Gaylord St., Denver, CO 80210.
COLO. LAMBDA (School of Mines), P.O. Box 472, Golden, CO 80401.
COLO. CHI (Colorado), c/o Richard Cunningham, 880 Orman Dr., Boulder, CO 80302.
FLA. ALPHA (Miami), 5850 San Amaro Dr., Coral Gables, FL 33146.

- FLA. BETA (Fla. State), FSU Box 6697, Tallahassee, FL 32306.
- FLA. GAMMA (Fla. Southern), FSC Box 4758, Lakeland, FL 33802.
- FLA. DELTA (South Fla.), Univ. Center Box 2366, Univ. of So. Fla., Tampa, FL 33620.
- FLA. EPSILON (Fla. Tech.), P.O. Box 26293, Orlando, FL 32816.
- FLA. SIGMA (West Fla.), 1775 E. 9 Mile Rd., Pensacola, FL 32504.
- FLA. UPSILON (Florida), 2 Fraternity Row, Gainesville, FL 32603.
- GA. BETA (Georgia), 247 Pulaski St., Athens, GA 30601.
- GA. EPSILON (Emory), Emory Drawer Z, Atlanta GA 30322.
- GA. ETA (Oglethorpe), 3683 Peachtree Rd., N.E., Atlanta, GA 30319.
- GA. SIGMA (Valdosta State), 1605 N. Patterson St., Valdosta, GA 31601.
- GA. PHI (Georgia Tech), 221 4th St., N.W., Atlanta, GA 30313.
- GA. PSI (Mercer), Mercer Box 94, Macon, GA 31207.
- IDAHO ALPHA (Idaho), 920 Deakin St., Moscow, ID 83843.
- ILL. ALPHA (Monmouth), 923 E. Euclid, Monmouth, IL 61462.
- ILL. BETA (Illinois), 211 E. Daniel St., Champaign, IL 61820.
- ILL. GAMMA (Northern Ill.), 917 Greenbrier Rd., DeKalb, IL 60115.
- ILL. DELTA (Millikin), 1165 W. Main St., Decatur, IL 62522.
- ILL. EPSILON (Bradley), 1311 W. Barker, Peoria, IL 61606.
- ILL. PSI-OMEGA (Northwestern), 2341 Sheridan Rd., Evanston, IL 60201.
- IND. ALPHA (Franklin), 800 E. Monroe St., Franklin, IN 46131.
- IND. BETA (Purdue), 406 Littleton St., W. Lafayette, IN 47906.
- IND. GAMMA (Indiana), 1115 N. Jordan, Bloomington, IN 47401.
- IND. DELTA (DePauw), 509 S. Locust St., Greencastle, IN 46135.
- IND. EPSILON (Evansville), 1723 Lincoln Ave., Evansville, IN 47701.
- IND. ZETA (Ball State), 525 Riverside Ave., Muncie, IN 47303.
- IND. SIGMA (Ind. State), 1320 S. Sixth St., Terre Haute, IN 47802.
- IOWA BETA (Iowa), 932 College, Iowa City, IA 52240.
- IOWA GAMMA (Iowa State), 140 Lynn Ave., Ames, IA 50010.
- IOWA DELTA (Drake), 1235 34th St., Des Moines, IA 50311.
- IOWA SIGMA (Simpson), 705 North E St., Indianola, IA 50125.
- IOWA CHI (Northern Iowa), 1113 W. 23rd St., Cedar Falls, IA 50613.
- KANS. ALPHA (Kansas), 1301 W. Campus Rd., Lawrence, KS 66044.
- KANS. BETA (Kansas State), 1015 N. Denison, Manhattan, KS 66502.
- KANS. GAMMA (Wichita State), 1714 N. Fairmont, Apt. 10, Wichita, KS 67208.
- KY. BETA (Western Ky.), 1351 College St., Bowling Green, KY 42101.
- KY. GAMMA (Morehead State), Morehead Box 1265, Morehead, KY 40351.
- KY. DELTA (Eastern Ky.), EKU Coates Bldg., Box 377, Richmond, KY 40475.
- KY. EPSILON (Kentucky), 410 Rose Ln., Lexington, KY 40508.
- KY. KAPPA (Centre College), Box 738X, Danville, KY 40422.
- LA. ALPHA (Southwestern La.), 1021 Johnston, Lafayette, LA 70501.
- LA. EPSILON (La. State), Box EP, Baton Rouge, LA 70803.
- LA. TAU-UPSILON (Tulane), 1200 Broadway, New Orleans, LA 70118.
- MAINE ALPHA (Maine), 117 College Ave., Orono, ME 04473.
- MD. BETA (Maryland), 4 Fraternity Row, College Park, MD 20742.
- MASS. BETA-UPSILON (Boston), 29 Pratt, Allston, MA 02134.
- MASS. GAMMA (Harvard), Quincy House 319, Cambridge, MA 02138.
- MASS. DELTA (Worcester Tech), 6 Humboldt Ave., Worcester, MA 01609.
- MASS. IOTA-TAU (M.I.T.), 484 Beacon St., Boston, MA 02115.
- MASS. KAPPA (Massachusetts), 118 Sunset Ave., Amherst, MA 01002.
- MICH. ALPHA (Adrian), 1108 Michigan Ave., Adrian, MI 49221.
- MICH. GAMMA (Mich. State), 4950 S. Hagedorn, E. Lansing, MI 48823.
- MICH. DELTA (Western Mich.), 919 Short Rd., Kalamazoo, MI 49008.
- MICH. EPSILON (General Motors Inst.), G-3206 Beecher Rd., Flint, MI 48504.
- MICH. ZETA (Ferris State), Rankin Center Box 26, Big Rapids, MI 49307.
- MICH. IOTA-BETA (Michigan), 1408 Wash-tenaw Ave., Ann Arbor, MI 48104.
- MINN. ALPHA (Minnesota), 1815 University Ave., S.E., Minneapolis, MN 55414.
- MISS. GAMMA (Mississippi), P.O. Box 8228 University, MS 38677.
- MISS. THETA (Miss. State), MSU P.O. Drawer AM, Mississippi State, MS 39762.
- MISS. SIGMA (Southern Miss.), Box 472 Southern Sta., Hattiesburg, MS 39401.
- MO. ALPHA (Missouri), 24 E. Stewart Rd., Columbia, MO 65201.
- MO. BETA (Washington U.), 9 Fraternity Row, Box 82, St. Louis, MO 63130.
- MO. GAMMA (Westminster), 315 W. Fifth St., Fulton, MO 65251.
- MO. DELTA (Rockhurst), 5304 Tracy, Kansas City, MO 64110.
- MONT. ALPHA (Mont. State), 811 S. Will-son Ave., Bozeman, MT 59715.
- MONT. BETA (Montana), 1120 Gerald Ave., Missoula, MT 59801.
- NEB. IOTA (Creighton), 2500 Cass St., Omaha, NB 68131.
- NEB. LAMBDA-PI (Nebraska), 635 N. 16th St., Lincoln, NB 68508.
- NEV. ALPHA (Nevada), 835 Evans Ave., Reno, NV 89502.
- N.H. ALPHA (Dartmouth), 38 College St., Hanover, NH 03755.
- N.H. BETA (New Hampshire), 28 Madbury Rd., Durham, NH 03824.
- N.M. ALPHA (Eastern N.M.), 610 W. First, Portales, NM 88130.
- N.M. TAU (New Mexico), 1811 Mesa Vista, N.E. Albuquerque, NM 87106.
- N.M. PHI (N.M. State), NMSU Box 3550, University Park, NM 88001.
- N.Y. ALPHA (Cornell), Hillcrest, Ithaca, NY 14850.
- N.Y. BETA (C. W. Post), C. W. Post College, Brookville Hall #27, Greenvale, NY 11548.
- N.Y. DELTA (Syracuse), c/o Richard J. Hancock, 418 Elm St., Syracuse, NY 13203.
- N.Y. EPSILON (Rensselaer Tech), 12 Myrtle Ave., Troy, NY 12180.
- N.Y. RHO (St. Lawrence), 62 Park St., Canton, NY 13617.
- N.C. ALPHA (N.C. State), 2701 W. Frater-nity Ct., Raleigh, NC 27606.
- N.C. THETA (Davidson), Box 33, Davidson, NC 28036.
- N.C. NU (Duke), Box 4713, Durham, NC 27706.
- N.C. XI (North Carolina), 112 Fraternity Ct., Chapel Hill, NC 27514.
- N.D. ALPHA (North Dakota), 306 Hamline St., Grand Forks, ND 58201.
- N.D. BETA (N.D. State), 1125 16th St., North Fargo, ND 58102.
- OHIO ALPHA (Youngstown), 850 Pennsylv-ania Ave., Youngstown, OH 44504.
- OHIO GAMMA (Ohio), 20 S. College St., Athens, OH 45701.
- OHIO DELTA (Ohio Wesleyan), 23 Williams Dr., Delaware, OH 43015.
- OHIO EPSILON (Cincinnati), 2707 Clifton Ave., Cincinnati, OH 45220.
- OHIO THETA (Ohio State), 1934 Indianola Ave., Columbus, OH 43201.
- OHIO KAPPA (Bowling Green State), Old Fraternity Row, Bowling Green, OH 43402.
- OHIO LAMBDA (Kent State), 222 Univer-sity Dr., Kent, OH 44240.
- OHIO MU (Denison), SAE, Fraternity Row, Granville, OH 43023.
- OHIO NU (Toledo), 2007 Scottwood Ave., Toledo, OH 43620.
- OHIO RHO (Case Western Reserve), 11915 Carlton Rd., Cleveland, OH 44106.
- OHIO SIGMA (Mount Union), 1359 S. Union Ave., Alliance, OH 44601.
- OHIO TAU (Miami U.), 310 Tallawanda Rd., Oxford, OH 45056.
- OKLA. KAPPA (Oklahoma), 730 College, Norman, OK 73069.
- OKLA. MU (Okl. State), 1308 W. Third Ave., Stillwater, OK 74074.
- OKLA. TAU (Oklahoma City), 2418 N. Vir-ginia Ave., Oklahoma City, OK 73106.
- ORE. ALPHA (Ore. State), 2929 Harrison St., Corvallis, OR 97330.
- ORE. BETA (Oregon), 812 E. 14th Ave., Eugene, OR 97401.
- ORE. GAMMA (Willamette), 900 State St., Salem, OR 97301.
- ORE. DELTA (Lewis & Clark), L&C Box 81, Portland, OR 97219.
- PA. ALPHA-ZETA (Pa. State), P.O. Box 949, State College, PA 16801.
- PA. GAMMA (Lafayette), College Sta. Box 4005, Easton, PA 18042.
- PA. DELTA (Gettysburg), 41 W. Lincoln Ave., Gettysburg, PA 17325.
- PA. EPSILON (Drexel), P.O. Box 7726, Philadelphia, PA 19101.
- PA. ZETA (Bucknell), 400 St. George St., Lewisburg, PA 17837.
- PA. THETA (Pennsylvania), 3908 Spruce St., Philadelphia, PA 19104.
- PA. SIGMA-PHI (Dickinson), HUB 400, Carlisle, PA 17013.
- PA. PHI (Carnegie-Mellon), 1085 Morewood Ave., Pittsburgh, PA 15213.
- PA. CHI-OMICRON (Pittsburgh), 244 N. Bellefield Ave., Pittsburgh, PA 15213.
- PA. OMEGA (Allegheny), AC Box 50, Mead-ville, PA 16335.
- R.I. ALPHA (Rhode Island), 67 Upper Col-lege Rd., Kingston, RI 02881.
- S.C. GAMMA (Wofford), Box 161, Spartan-burg, SC 29301.
- S.C. DELTA (South Carolina), Univ. Sta., Box 85112, Columbia, SC 29208.
- S.C. NU (Clemson), Box 2157, Univ. Station, Clemson, SC 29631.
- S.D. THETA (S.D. State), 705 11th Ave., Brookings, SD 57006.
- S.D. SIGMA (South Dakota), 1856 Madison Ave., Vermillion, SD 57069.
- TENN. ALPHA (East Tenn. State), 2810 W. Walnut, Johnson City, TN 37601.
- TENN. BETA (Middle Tenn. State), Box 549 MTSU, Murfreesboro, TN 37130.
- TENN. DELTA (Tenn. Tech), 328 N. Willow Ave., Cookeville, TN 38501.
- TENN. ZETA (Southwestern at Memphis), 2000 N. Parkway, Memphis, TN 38112.
- TENN. ETA (Union), Union Box 2073, Jack-son, TN 38301.
- TENN. KAPPA (Tennessee), 1808 Fraternity Park Dr., Knoxville, TN 37916.
- TENN. NU (Vanderbilt), 2500 Kensington Pl., Nashville, TN 37212.
- TENN. SIGMA (Memphis State), 3601 Mid-land, Memphis, TN 38111.
- TENN. TAU (Tenn. at Martin), 528 Lee St., Martin, TN 38237.
- TENN. OMEGA (U. of the South), Box 1060, Sewanee, TN 37375.
- TEXAS ALPHA (Texas Tech), Box 4093 Tech Sta., Lubbock, TX 79409.
- TEXAS BETA (Texas Christian), TCU Box 29233, Ft. Worth, TX 76129.
- TEXAS GAMMA (Texas-El Paso), 444 E. Robinson, El Paso, TX 79902.
- TEXAS DELTA (Southern Methodist), 3105 Binkley, Dallas, TX 75205.
- TEXAS EPSILON (Houston), P.O. Box 14091, Houston, TX 77021.
- TEXAS RHO (Texas), 2414 Pearl St., Aus-ton, TX 78705.
- UTAH UPSILON (Utah State), 809 N. 8th East, Logan, UT 84321.
- UTAH PHI (Utah), 1430 Federal Way, Salt Lake City, UT 84102.
- VT. BETA (Vermont), c/o Stephen J. Moreau, 184 S. Winsooki Ave., Burlington, VT 05401.
- VA. ALPHA (Randolph-Macon), Box 409, Ash-land, VA 23005.
- VA. ZETA (Va. Polytech), 420 E. Roanoke St., Blacksburg, VA 24060.
- VA. OMICRON (Virginia), 1703 Grady Ave., Charlottesville, VA 22903.
- VA. SIGMA (Washington & Lee), 205 E. Washington St., Lexington, VA 24450.
- VA. TAU (Richmond), RC Box 68, Univ. of Richmond, VA 23173.
- VA. UPSILON (Hamden Sydney), Box 301, Hampden Sydney, VA 23943.
- WASH. ALPHA (Washington), 4506-17th St., N.E., Seattle, WA 98105.
- WASH. BETA (Wash. State), N.E. 865 B St., Pullman, WA 99163.
- WASH. GAMMA (Puget Sound), 3602 N. 14th St., Tacoma, WA 98406.
- WASH. CITY RHO (Geo. Washington), 2034 G St. N.W., Box 14, Washington, DC 20006.
- W.VA. ALPHA (Marshall), 1607-5th Ave., Huntington, WV 25703.
- W.VA. BETA (Bethany), Box 537, Bethany, WV 26032.
- WIS. ALPHA (Wisconsin), 627 N. Lake St., Madison, WI 53703.
- WIS. BETA (Ripon), c/o Ripon College, Ripon, WI 54971.
- WYO. ALPHA (Wyoming), Fraternity Park, Laramie, WY 82070.

Colonies

- Salisbury State Colony of SAE, Salisbury State College, Box 431 College Center, Salisbury, MD 21801.
- Davis and Elkins Colony of SAE, Box 454 Davis and Elkins College, Elkins, WV 26241.
- Indiana State-Evansville Colony of SAE, Indiana State University, U.C. Box 134, Evansville, IN 47712.
- Indiana of Pennsylvania Colony of SAE, 240 South 11th St., Indiana, PA 15701.
- Eastern Montana Colony of SAE, c/o Jim Eckenroad, Dir. of Residential Life, E.M.C., Billings, MT 59101.
- Baylor Colony of SAE, Box 135, Student Union Bldg., Waco, TX 76703.
- College of Charleston Colony of SAE, c/o SPO Box 1126, College of Charleston, Charleston, SC 29401.

PLEASE HELP US FIND THESE LOST MEMBERS

ARKANSAS BETA ARKANSAS-LITTLE ROCK

Adams, Wayne E., '65
Barker, Hulon W., '68
Brazil, Arthur B., '67
Brinkley, Sherrell G., '67
Brown, Larry D., '70
Camplin, James M., '68
Couri, Paul A., '66
Dennie Jr., James O., '75
Fain, Robert C., '70
Geyer, John N., '65
Kliem Jr., Edward C., '66
Moody, Edward O., '71
Parks, Larry M., '73
Perry, Bobby R., '66
Pittman, Peter J., '68
Porter, James W., '70
Potts, Jerry L., '68
Rohr, Fae R., '63
Seely, Bobby J., '67
Sherer, William R., '68
Smith, Garth V., '66
Smith, Miller B., '63
Smith III, William A., '64
Stephens, Lawrence K., '66
Sullivan, Patrick J., '69
Teepel, Donald B., '67
Thorpe, James R., '75
Vance, Donald A., '66
Warren, James O., '75
Whitehead, James V., '66
Williams, John L., '66

CALIFORNIA ALPHA STANFORD

Allen, Charles L., '44
Anderson, Bruce N., '40
Atkins, Jr., William T., '62
Baldwin, Louis G., '19
Bardin, Richard L., '67
Bast, David E., '63
Bauman, John K., '71
Beck, Bruce W., '70
Beckley, Ernest T., '37
Beenfeldt, Norman, '33
Bewley, Jr., William L., '64
Bigelow, James K., '28
Black, Carlin J., '62
Booth, John P., '56
Brannaman, James M., '49
Brooke, Lloyd S., '37
Brown, III, James S., '45
Brudie, Jr., John I., '45
Carmody, Padraic C., '63
Clark, James E., '30
Coe, Michael R., '68
Corman, Roger W., '44
Courtney, Ralph W., '61
Cox, Jr., John W., '38
Cuddy, Daniel H., '43
Davis, Derek C., '56
Davis, Jr., Joseph E., '43
Davisson, Ralph M., '63
Dinihanian, Richard H., '71
Duncan, David A., '59
Dunn, Allen W., '56
Dwyer, John C., '35
Ellich, Thomas C., '54
Erickson, John H., '52
Favors, IV, Arch M., '51
Field, Almeron J., '45
Fisher, Bruce W., '67
Fitch, Stuart G., '48
Fleck, Herman N., '32
Flynn, James B., '53
Fossett, James S., '66
Fowle, Lee C., '25
Fruin, William M., '65
Fulbeck, Charles L., '69
Galloway, James C., '34
Gentry, Lee W., '61
Giesy, Paul C., '10
Giffin, Herschel E., '39
Gilbreath, Dennis R., '62
Gould, John J., '68
Halsted, Charles H., '58

Hanbury, Arthur W., '43
Hancock, Charles, '57
Hanner, Allen F., '53
Hardinge III, Franklin, '65
Harwood, Edwin T., '34
Hayden, Peter M., '46
Hayes, Anson C., '36
Hedge, Norman J., '31
Helmick, Milton J., '09
Henderson, Edward S., '53
Hennefer, James A., '68
Hinman, John, '46
Hirsch, Gerald P., '61
Holcomb, Elliott, '09
Hoppin, Robert C., '65
Horn, David B., '68
Hough, Gordon L., '41
Hunter Jr., Robert O., '67
Ingram, Timothy H., '66
Inman, Bradley D., '62
Ireland, Robert M., '65
Johnson, Speldon K., '10
Jones, Herbert A., '31
Kavanagh, Alfred L., '17
Keller, Walter P., '23
Kitching, James T., '54
Lake, Lawrence E., '29
Lambiotte Jr., Benjamin J., '52
Lee, JG, Peter W., '65
Lenmer, Gerald D., '56
Lindsay, Franklin A., '38
Locke, J. Goodwin, '17
Luther, Martin, '14
Lynch, Larry L., '60
MacDonald, Michael G., '63
Macomber, George H., '32
Marks, Thomas G., '20
Marshall, Bruce D., '46
McCourt, Virgil W., '14
McDermont, Gilbert R., '26
Mechem, Kirke L., '50
Miller, Benjamin G., '43
Moffett, William F., '54
Moreland, Michael M., '64
Muirhead, David D., '70
Neighbor III, James E., '57
Northrop Jr., Robert S., '30
O'Hara, Thomas J., '01
Ottmar, Michael W., '67
Pinkham, James R., '64
Powell, Robert J., '31
Prachar, William E., '67
Prentice, E. Whitman, '04
Price Jr., Henry B., '27
Pride, Richard A., '65
Raab III, Frank E., '74
Redding, James F., '44
Reed, Maurice, '00
Reitz, Bruce A., '66
Richards, Gordon W., '37
Riordan, Edward J., '54
Ritter, Darrell L., '43
Rogers, Steven P., '64
Rolls, John M., '37
Rose, Hugh, '01
Roth, Robert E., '36
Russell, Dwight P., '54
Ryone, Leroy T., '07
Scarboro, Remo E., '12
Schultz, Lloyd G., '19
Sinclair Jr., Brevard D., '17
Skinner, Edward D., '23
Small, Wilson C., '39
Smart, Orman B., '12
Smith, Loren D., '57
Smithson, Gerald L., '67
Souveroff Jr., Vernon W., '56
Spivey, Richard L., '58
Springer, Anthony T., '59
Stanley, Lorne R., '41
Stavig, Earl J., '50
Steenburg, Richard W., '46
Stetson, Robert C., '56
Stevens, Richard A., '46
Stevenson, Jack L., '37
Stice, James B., '53
Stout, Oliver H., '17
Stout, Roger W., '64
Strong, Charles H., '32
Stutzman, Myron D., '61
Sumner, Robert H., '40

Sundeen Jr., Richard A., '60
Swanson, Charles R., '64
Sweet, C. Robert, '41
Thoreau Jr., Henry D., '44
Thurbert Jr., James P., '50
Todd, Harold E., '24
Vrang, Christian M., '15
Ward, Philip L., '38
Williamson, Raymond K., '58
Winter, Lawrence H., '41
Woodson, Jack A., '63

CALIFORNIA BETA CALIFORNIA BERKELEY

Albert, David J., '63
Anderson, Robert H., '57
Arndt, Ronald C., '59
Arth, Leland C., '46
Bahl, Frederick W., '21
Barnett, Charles D., '12
Barre, Ole, '61
Bender, Allen L., '54
Boone, Richard J., '60
Brown, David L., '43
Brown, Rodney C., '53
Bunce, Harold L., '30
Cameron, James C., '43
Clainos, Deme M., '65
Conn, Robert O., '45
Cranmer, L. D., '21
Crawford, Jerry T., '61
Crook, Stanley K., '36
Davies, Joseph B., '62
Davison, Leslie A., '54
Decker, Robert W., '48
Deklotz, Robert N., '56
Deming, Terry R., '75
Denbo, John M., '17
Derdivanis, John P., '54
Dezzani, Peter H., '63
Dixon, Donald W., '44
Donovan, Jack E., '37
Dykstra, David C., '63
Farnam Jr., Warren E., '52
Fleming, Steven R., '64
Friedenbach, James W., '58
Garland, Bruce, '56
Giacomazzi, James W., '64
Gilbert, Robert R., '44
Giumarra Jr., John G., '62
Greig Jr., William H., '62
Griffin, Jay R., '57
Gunnison, Jack S., '35
Hall, Steven R., '66
Halloran, Arthur H., '52
Harris, Graham L., '04
Hawley, Willis, '60
Hays, Gerold C., '56
Hilderbrand, Ronald W., '60
Hoffman Jr., Ralph J., '53
Hogarty, Will S., '32
Holabird, R. Graham, '17
Hopkins, James F., '48
Hurd, Gene W., '31
Jaeger, Richard V., '44
Jarrett, Clyde R., '45
Jerry, Robert C., '53
Johnson, Melvin J., '45
Jones, Harold R., '40
Kelllogg, Frank B., '05
Kendrick, Edgard L., '50
King, Gerald R., '63
Kyte Jr., Alvin R., '57
Laird, Ian M., '38
Langford, Wayne A., '60
Linder, Cortland, '34
Logan, John D., '30
Louda, Franklin M., '69
Love, James E., '45
Lurmann, Paul F., '39
Lutz, Robert E., '54
Malcolm, Chester, '11
Mallory, Milo S., '33
Martin, Robert M., '68
McCaughy, Hamilton, '34
McGinn, Boyd, '39
McGrail Jr., Thomas M., '32
McKee, Michael G., '52

McQuary, John E., '42
Meredith, Harley M., '26
Millinich, Robert M., '62
Mills, James B., '62
Mills, William W., '60
Mize, Cecil B., '27
Moorehead, Chesley B., '43
Morgenroth, Michael C., '65
Murphy, Everett C., '32
Murray Jr., J. R., '17
Nicholls, Phillip F., '23
Niles, Henry B., '42
Northcroft, William D., '47
Olguin, Henry, '59
Parr, Robert W., '60
Parsons, Alan R., '51
Parsons, John E., '37
Pfeffer, Roger A., '59
Phelps, Raymond C., '16
Phillips, Irvine L., '26
Pinkham Jr., Charley A., '65
Plosser, William D., '53
Pride, Robert M., '60
Quilter II, Charles J., '64
Rasmussen, Donald W., '53
Rasmussen, Otto D., '15
Reddick, John B., '05
Richardson, Leonard M., '25
Rodenhuis, David R., '58
Rohrer, John P., '20
Rosebrook Jr., Guy L., '45
Runyon, Stanley T., '15
Ryan, David M., '62
Saler, Lawrence D., '49
Salisbury, John C., '63
Sarter Jr., Lee A., '44
Sauer, William E., '00
Schreiber, Erich L., '59
Scobey, Fred B., '42
Shaffer, Lymon H., '67
Shaw, Walter P., '18
Simandal, Warren L., '64
Smilie, Robert H., '08
Sorensen, William, '45
Southard, Daniel L., '68
Spohn, Clay E., '22
Staley, Donald C., '35
Staples, James W., '29
Stevens, Richard S., '52
Stevens Jr., Walter W., '37
Strickler, Harry K., '27
Stroud, Lloyd L., '15
Stull, Robert J., '16
Sutherland, John C., '59
Tadich, Danilo J., '13
Terry Jr., Hampton E., '51
Thompson, Donald M., '61
Thompson, George A., '14
Watson, William D., '54
Weeks, Foster W., '51
Weil, Randall B., '71
White, Warren B., '66
Williams, David B., '62
Williams, Jack M., '45
Williams, Robt. H., '64
Wilson, Christopher, '65
Winston, James W., '20
Wiser, Emerson E., '50
Ziegler, David H., '55

CALIFORNIA GAMMA U.S.C.

Ablowich, Edgar, '34
Alden, Richard F., '46
Allen, Robert L., '31
Andrews, Scott R., '73
Arganese, Thomas J., '69
Backus Jr., Leonard T., '64
Baker, John C., '52
Banks Jr., Guilbert, '61
Bard, Robert H., '38
Barr, Matthew E., '28
Barthold Jr., Edward A., '48
Bateman, Paul L., '34
Beggs, Arthur G., '28
Bell, John C., '44
Belville, Lance S., '57
Benesh Jr., Frank J., '50

Bernard, Charles, '38
Bernard, Robert B., '42
Bolstad Jr., William A., '41
Bothamley, G. Merrill, '44
Brennan, W. J., '42
Briggs, Michael J., '65
Bright, James S., '71
Brombach, Richard P., '52
Brunton, John J., '40
Bryan Jr., Paul G., '66
Burchard, Gerard W., '36
Byrd, Gary L., '63
Camou, Robert E., '72
Cardiel, Richard M., '58
Carter, Gene B., '34
Dave Jr., Reece S., '47
Charles Jr., William W., '38
Chase, Frederick A., '31
Chick, William B., '45
Clark II, Jay, '39
Clark, Judson H., '16
Clements, Douglas D., '60
Cogagne, Arthur D., '67
Cochran Jr., Jack C., '58
Colburn, Victor T., '26
Connor, Nicholas D., '72
Cornwell, Gerald D., '47
Corrie, Oliver W., '32
Cowan Jr., James H., '45
Craig, Roderick S., '50
Crosby, Richard S., '51
Cygan, Frank J., '38
Dahlberg, Carl B., '37
Davidson, Norman C., '50
Davis, Joe A., '42
Dersch, Ted J., '51
Dietzel, Randall C., '69
Dollard Jr., John T., '50
Donnelly, Kenneth S., '45
Duke, Ivan J., '42
Falkenhainer, Charles F., '41
Faner, Walter W., '40
Ford, William W., '29
Fox, William J., '23
Frew, James E., '50
Gagen, Patrick W., '69
Garat, Miguel J., '28
Gardner, Richard M., '36
Garner, Jack, '40
Gartner, William F., '65
Gould, Richard S., '52
Grant, James E., '45
Green, Edwin W., '57
Green, Frederick G., '50
Greene Jr., Joseph E., '66
Griffin, Robert L., '46
Griner, James H., '28
Gurr, Ray D., '49
Hall, William K., '36
Hamilton, Thomas J., '36
Hanson, Ralph T., '34
Harbison, Robert C., '46
Harbison, Robert F., '47
Harper, William, '50
Hartnett, Paul W., '75
Haugh, Stanley F., '55
Hayes Jr., W. Donn, '39
Henning, Karl A., '48
Hertzog, Heber T., '46
Hewson, John M., '36
Hillman, Ralph E., '49
Holland, Gary E., '59
Holmsen Jr., Cato F., '52
House, Edgar L., '26
Hughes, Roger L., '67
Hupp Jr., Earle R., '32
Hurley, Donald, '20
Immel, Jack F., '58
Ives, Richard K., '52
Jacobson, Carl E., '51
Jensen Jr., Oscar T., '41
Johnson, Robert F., '30
Johnson, Robert M., '49
Jones, Clark H., '38
Jones Jr., George W., '52
Jones, J. Roger, '39
Kellogg, Joseph S., '45
Kies, Gregory L., '69
Kiesler, Jack D., '52
Kirby, Jack E., '46
Kloepfer, Wm. L., '62

- Kraft, Verner H., '51
 Krebs, William, '19
 Kruse, Robert E., '51
 Kubas, John C., '58
 Kuri, Frederick E., '60
 Laird Jr., Robert S., '54
 Lamontagna, John, '42
 Langmade, Roy L., '53
 Larsen, Robt L., '42
 Larson, Bud A., '37
 Lawrence, John G., '35
 Lawshe Jr., James S., '46
 Lee, Douglas E., '42
 Lee, Douglas E., '42
 Lee Jr., Robert C., '52
 Leer, John W., '48
 Leidy, Alfred L., '47
 Lewis, Gordon M., '39
 Lewis, Jerauld M., '51
 Lorenz Jr., Reno E., '57
 Lyon, Arthur J., '17
 MacKay Jr., William C., '59
 Mallers Jr., Charles E., '52
 Manker, Robert, '26
 Mason, Jackson H., '45
 Matheson, George L., '30
 Mattoon, Stanley F., '50
 McCourt, Virgil D., '31
 McCoy, John H., '68
 McHugh, Robert F., '46
 McIntyre, Carlyle F., '16
 McKay, Thomas H., '62
 Meredith, Madison W., '48
 Miles, Hugh M., '31
 Miller Jr., Walter E., '30
 Millmoe Jr., Robert S., '50
 Mitchell, Harold, '31
 Mitchell Jr., Otis, '37
 Moffett, Laurence S., '30
 Moore, John C., '27
 Morehouse, David B., '68
 Mulfinger, Carl R., '53
 Murray Jr., James W., '53
 Myers, Richard C., '51
 Nelson, Lee M., '41
 Nicol, Alan O., '49
 Noyes, Norman E., '34
 O'Brien, Richard D., '52
 Oden Jr., Raymond S., '60
 Ogden, Warde B., '30
 Orme, Frank W., '28
 Orme, R. Gordon, '30
 Ostrom Jr., Joseph E., '55
 Ostrop Jr., Cyrus N., '49
 Paden, William J., '44
 Paonessa Jr., George C., '39
 Park, Robert B., '52
 Parsons, Charles B., '34
 Payne, Jack H., '26
 Pearson, James W., '65
 Peterson, Robert, '67
 Peterson, Thomas S., '26
 Petit, Richard W., '69
 Plate, Carl F., '27
 Pollich, Gardiner T., '38
 Portier, Robert B., '49
 Potter, Charles H., '22
 Randall, Paul A., '35
 Reese Jr., Joseph E., '47
 Reynolds Jr., Delmar M., '33
 Riddle, Keith, '40
 Rinkler, Gilbert H., '48
 Ritzau, Erick W., '39
 Roark, James M., '64
 Roberts, Edward J., '72
 Robertson, James E., '67
 Robertson, Wilbur S., '50
 Rockwell, Thomas A., '35
 Rolfe, James B., '67
 Sanders, Douglas L., '61
 Saunders, George W., '66
 Scroggie, Steven N., '66
 Shannon, John C., '68
 Shennun, Donald P., '57
 Shippey, Charles S., '49
 Short Jr., Charles W., '44
 Smith, Argyle L., '34
 Smith, Bruce A., '28
 Smith, David W., '45
 Smith, Elbert R., '44
 Smith, Gordon J., '40
 Smith, Richard H., '52
 Smith, Wesley V., '17
 Snyder, Ivan J., '64
 Sohn, Benj. F., '41
 Spielman, Jeffrey J., '66
 Stack, James L., '38
 Stafford, Robert F., '45
- Stedman, Dwight O., '57
 Stell, Ronald J., '58
 Stever, William E., '27
 Steward, Rudolph, '28
 Stewart, James D., '30
 Stewart, Thomas J., '32
 Stiles, Robert A., '58
 Stokes, Wm. S., '32
 Stout, Richard C., '50
 Stratton, Hal, '49
 Sullivan Jr., Robert D., '33
 Sutterlin, Frederick K., '32
 Sylvester, Paul V., '33
 Taylor, Robert M., '66
 Thomas Donald R., '50
 Thornton, Archie R., '22
 Tinsman, Stewart H. W., '50
 Tobias Jr., Phil, '44
 Trask, Walter W., '34
 Tuttle, Arthur W., '41
 Van Ornum, John C., '32
 Vincent, Melvin J., '18
 Vinson, Kyle D., '27
 Vogel, Michael C., '62
 Wanka, Fred O., '21
 Watson, Romaine E., '23
 Weaver, Gerald R., '63
 Weaver, John A., '61
 White, Norman L., '37
 Whitney, George W., '41
 Wilburn, Jerome D., '63
 Wilky Jr., Norman L., '68
 Williams, Bruce D., '57
 Williams, James D., '43
 Williams, Victor E., '32
 Williamson, Harold F., '24
 Willson Jr., George J., '60
 Wilson, John W., '58
 Wirth, Bruce M., '46
 Wolcott, John F., '68
 Wood, Robert D., '49
 Worthen, Richard E., '49
 Wright, Charles S., '40
 Yanconelli, Jules P., '57
- CALIFORNIA DELTA
 U.C.L.A.**
- Adelson, Gary A., '75
 Almond, Edward A., '42
 Ayers Jr., James E., '49
 Ayers, Richard W., '53
 Bader, Bruce B., '46
 Bartling, Wray, '31
 Bennett, John B., '52
 Berger, Albert T., '49
 Berger, James K., '53
 Bodine, Arthur W., '65
 Bonner, Robert S., '37
 Bourne, James D., '54
 Browne, Herbert M., '39
 Burleigh, Al E., '40
 Burns, Douglas S., '65
 Bushnell, George H., '44
 Caldwell, Jack S., '34
 Cameron, William E., '72
 Campbell, William L., '46
 Cardell, Emery L., '00
 Carter, Thomas W., '47
 Chaphe, George D., '51
 Choate, Bruce A., '70
 Christensen, Glenn K., '46
 Cole, William, '38
 Commander, John C., '46
 Curtis Jr., Charles E., '46
 Danna, Clint T., '63
 David, Henry A., '33
 Davis, Homer B., '44
 Davis, Malcolm A., '34
 Delacy, James R., '68
 Dodds Jr., John W., '54
 Durham, Robert S., '44
 Eades, John M., '69
 Evans, Allan E., '53
 Evans Jr., John T., '41
 Fickes, Leland S., '59
 Fiharty, Robert H., '56
 Flannery, Patrick J., '49
 Foorman, Richard D., '45
 Franzen, William H., '33
 Fulmer, Richard P., '41
 Gardner, Richard E., '47
 Gillespie, John J., '53
 Glenn, John R., '53
 Goddard, Robert J., '35
 Goodno, Robert H., '35
 Gray, Raymond J., '66
- Greenfield, William R., '45
 Groat, Geoffrey A., '70
 Harris, William O., '14
 Hart, Curtis, '38
 Heath, Francis R., '70
 Heather Ingto, R. T., '57
 Hildebrand, Carver E., '42
 Hoadley, Floyd C., '50
 Hobbs, Jack S., '49
 Holland, Norman E., '52
 Honeychurch, Denis A., '68
 Houghton Jr., Frederick C., '45
 Hoyer, William R., '30
 Hunt, Leigh R., '53
 James, Sumner, '02
 Jerde, Jon A., '63
 Johnson, Melvin E., '59
 Johnson, Walter R., '30
 Jones, Elwy B., '43
 Jones III, John T., '47
 Jones, Richard D., '41
 Jones, Stephen K., '58
 Kavanagh, John L., '46
 Kelley, Byron C., '51
 Kelsey, James, '61
 Kent, Michael A., '71
 Knaefer, Burton B., '52
 Leighton, James G., '41
 L'Heureux, Harry, '42
 Lindstrom, James D., '63
 Loncono, Carl M., '44
 Lowerre III, George H., '42
 Malley, Richard C., '49
 Massey, Walter H., '55
 Mathews, Michael D., '65
 Mathewson, Robert F., '49
 McCane, James M., '34
 McDonald, Donald M., '35
 Mensing, Richard B., '38
 Mertz, William T., '63
 Miller, Theodore C., '61
 Molloy, Robt. G., '66
 Munro, George C., '29
 Murray, Bruce C., '50
 Napier, Alexander, '31
 Nidorf, Louis J., '52
 O'Connor, Thomas J., '48
 Oderman, Jeffrey M., '71
 Olson, Carl V., '37
 Orrick, Gary J., '60
 Otis, Henry P., '57
 Parker, Gary F., '61
 Pehkoff, Donald M., '49
 Perenchio, Andrew J., '54
 Perry, Kenneth J., '57
 Phelps, Michael S., '62
 Pierozzi, Constantine, '54
 Pittenger, Emmett E., '69
 Pontius, David W., '32
 Popovich, Joseph, '52
 Postal, James A., '59
 Poulsen Jr., Emanuel F., '48
 Rankin, James A., '46
 Reade, W. Wolf, '38
 Robertson, Allan S., '32
 Robertson, Donald J., '55
 Robison, Clark A., '32
 Roderick, Christopher, '70
 Rogers, Jerry C., '49
 Rognlien, David L., '64
 Rosemont, Robert K., '44
 Rosetta, Robert L., '56
 Salas, William F., '47
 Salmont, Gustave H., '51
 Schassburger, R. M., '64
 Schmidt, Duane J., '57
 Schultz, Jackson L., '45
 Scripps, Thomas, '48
 Selfridge, William P., '67
 Sevison, Tim S., '70
 Shaw, Robert L., '46
 Smith, Eric L., '64
 Smith, Terry R., '63
 Sneed, Gary R., '62
 Snyder, John H., '57
 Spinner, Paul W., '44
 Stevens, George A., '52
 Taft II, Alfred Z., '41
 Tappan, Robert M., '34
 Thomas, John A., '53
 Thompson Jr., Harold R., '41
 Tibbetts, Samuel J., '46
 Ullom, Max E., '45
 Vitale, James V., '43
 Waddell Jr., Claude E., '45
 Wade, Lynne, '30
 Wagner Jr., Harvey F., '45
 Waite, Melvin L., '62
- Watts, Jack Dean, '46
 Welch Jr., George W., '47
 Wells, Robert S., '47
 Wheeler, Robert L., '46
 Wildman, Forrest E., '39
 Williams, Robert D., '67
 Williamson, Will L., '45
 Willson, Henry R., '37
 Young, Charles W., '57
 Young Jr., Garth L., '48
 Zamanigan, Peter C., '67
 Zinzer, Frank T., '60
- CALIFORNIA EPSILON
 OCCIDENTAL**
- Adams, Willard P., '44
 Aine, Harry E., '49
 Alden, John S., '43
 Allis, Donald L., '48
 Andrews, Richard O., '71
 Applebaum, Stephen N., '68
 Appleton, Fredrick G., '60
 Armitage, Thomas C., '61
 Augsburger, Jack J., '49
 Barron, Roderick W., '66
 Belman, E. Keith, '30
 Beschta, Jack W., '57
 Bevington Jr., Boyd M., '54
 Bonhall, Robert L., '41
 Brock, Frederick W., '65
 Brown, Thomas J., '53
 Browning, Holton L., '36
 Brubaker Jr., Crawford F., '46
 Bursleson, Donald, '28
 Caldwell, Richard T., '51
 Caldwell, Victor W., '64
 Chamberlain, John G., '55
 Chilcott Jr., E. Richard, '58
 Christ, David R., '55
 Christensen, L. E., '53
 Cole, Steven L., '70
 Colwell Jr., William T., '56
 Coombs, Colin B., '59
 Cresse Jr., Arthur E., '39
 Crohare, Marcelo, '68
 Daniel, Richard H., '42
 Carby, Fredryc R., '34
 Davis Jr., Joseph E., '49
 Dawson, Carl, '60
 De Massa, Philip A., '67
 Dunn, Bruce C., '56
 Ebaugh, Thomas R., '61
 Ehmman, Norman R., '44
 Ensign, James G., '53
 Evans, Gene P., '47
 Felix, Donald E., '54
 Fisher, Karel V., '69
 Frain, Adnah K., '54
 Frank, Dudley B., '54
 Frary Jr., Michael G., '67
 Gardner, Sidney L., '63
 Gilbert, James R., '70
 Gregory, Paul J., '61
 Guy, Darryl L., '53
 Hall, John H., '61
 Hall, Robert L., '31
 Hamilton, George W., '33
 Hardison, Richard C., '47
 Harmon, Jack, '34
 Harris, Lynn E., '58
 Hennessy, Edmund A., '40
 Hinchliffe, Douglas M., '60
 Hume, Granville W., '50
 Humphrey, Joseph F., '63
 Hunt, Gordon, '52
 Imler, Norman C., '40
 Ingersoll, George S., '50
 Jacob, Robert M., '68
 Jones, Ralph N., '45
 Julson, V. Leonard, '47
 Kawabori, Isamu, '62
 Kearl, Gordon C., '57
 Kemper, Laurence B., '57
 Kendall, Kenneth W., '65
 Kendall, Wm. R., '32
 Kinsey MD, Stephen L., '63
 Koster, Kenneth K., '57
 Land, Alan E., '64
 Lawshe, Roger D., '42
 Lazarus, Richard K., '67
 Lineberger, Richard C., '49
 Maguire III, James B., '65
 Marimon Jr., Robert L., '54
 Maron MD, Barry J., '63
 Martes, Michael W., '50
 Mason III, Stanley I., '66
- McCabe, Kinne D., '65
 McCord, Robert E., '31
 McCormick, Harold H., '48
 McGorchin, Thomas R., '58
 McHargue, Robert M., '59
 McMeekin, Donald R., '58
 McNally, Patrick F., '64
 Miller, Aubry, '22
 Miller, Charles E., '55
 Miller, Lowry M., '48
 Mings, Turley R., '49
 Modafferi, Thomas R., '62
 Montonna, William E., '52
 Moore, Timothy C., '63
 Morse, Burton W., '38
 Moyes, Donald R., '53
 Musgrove, Joseph, '11
 Newman Jr., Robert E., '49
 Nichols, Richard F., '46
 Nunn Jr., Guy T., '37
 Oliver, Gerald A., '30
 Olmsted, Charles S., '39
 Owen, Roger D., '42
 Paden, John N., '59
 Parker III, Morris B., '55
 Parsons, Nahum V., '30
 Pease, Richard F., '54
 Percival, David B., '36
 Person, Douglas A., '51
 Peterson, David A., '61
 Price, Wilbur N., '32
 Quilligan, Jay J., '73
 Richardson, R. Gerald, '60
 Roberts, Jack K., '47
 Rogers, Warren A., '36
 Roubeshub, Jay R., '64
 Rountree, Stephen D., '71
 Scoles, Jack R., '42
 Setterholm, Ralph G., '46
 Shelton, James J., '42
 Sigal Jr., Albert E., '46
 Smoyer, Douglass L., '56
 Cole, Steven L., '70
 Spraker, Roland V., '39
 Stechman, John V., '56
 Stevens, David E., '48
 Stockman Jr., Lawrence E., '64
 Daniel, Richard H., '42
 Stone, William E., '47
 Stumpf, Herman A., '39
 Swift, Patrick D., '51
 Taylor Jr. Howard D., '55
 Thompson, Charles E., '47
 Tillery, James A., '41
 Trifon, Malcolm R., '65
 Tuttle, Melbourne W., '35
 Van Etten, Peter G., '37
 Vincent Jr., Joseph H., '52
 Waddell Jr. John S., '50
 Wade, Bernarr, '32
 Walker, Craig P., '61
 Walton, William R., '40
 Warner, Richard C., '58
 West, Theodore S., '41
 Weston, Stanley E., '55
 Weyler, Rex A., '70
 Williams, Robt. D., '41
 Wilson, Charles L., '73
 Wilson, Gary A., '56
 Winfield, Jay A., '63
 Young, David W., '63

WHEN WE CAME UP FROM DIXIE LAND

Edited by Joseph W. Walt

VIII

FRATERNITY LEADERSHIP IN EMBRYO

(Continued from February issue)

GEORGE established connections at once with our Vanderbilt chapter and arranged a boarding place opposite the campus. He attended chapter meetings regularly and took the deepest interest in ΣAE's problems. Tennessee Nu chapter had been revived at Vanderbilt University but five years before and, in the face of very well entrenched competition, had been winning its way to the front. J. Washington Moore was giving his brilliant talents to the job and had earned the title of father of this ancient young chapter. Yet ΒΘΠ, ΚΑ and ΦΔΘ still had some advantage over us because they had the inside run on Nashville boys. Our alumni list of elder and prominent Nashvillians was strong, aristocratic and brilliant, but in the period of Nu chapter's somnolence we had temporarily lost our hold on the younger fellows attending Vanderbilt. This jinx is a hard one to break, too. Did you ever try it?

A group of three very active alumni in the city were backing up the chapter in every way possible and each year showed its gains. These were: B. Frank Cheatham, Jr., son of the distinguished Confederate general who was a Sewanee man and was to follow in his father's profession of arms. He was Major-General Cheatham, Quarter Master General of the Army, when he retired from service in 1932. Samuel W. Meek, of the Union chapter, and John Early, a Vanderbilt alumnus, were the other two. George Bunting united with these alumni and worked as hard to improve the position of ΣAE in Nashville as any of them. He showed marked ability in rushing and pledging men and in particular used his influence to win Nashville boys for the chapter. In his three months of residence there he made a definite contribution toward the recapture of Nashville for the fraternity.

Incidentally, George was now getting his first look in on active fraternity life by attendance at chapter meetings.

IX

UNIVERSITY OF TENNESSEE RETAKEN

JUST HOW LITTLE vitality there was in ΣAE in the slumbering seventies is shown by the record of our University of Tennessee chapter, typical of many other chapters of that period and of the decade following. Tennessee Kappa was founded June 18, 1879, with five charter members, initiated five additional members and in 1880 was dead, although our catalogue indicates that three members did not graduate until '81 and one not until '83! This record speaks volumes, too, on the weakness of our form of government of that day. It simply did not function in the way of helping young or weak chapters get on their feet. If they could not work out their own survival they perished. A chapter was supposed to be "established" after the ritual had been read by a visiting student to another student or small group of students and a charter was left in their keeping. It was an even break that the charter would be returned in the critical second year which corresponded to the critical "teething period of infancy."

Kentucky Military Institute (Ky. Chi) was our governing Grand Chapter in that day and, despite this indicator of weakness in her administrative power, is accounted a marvel of progressiveness in comparison with others of our early Grand Chapters. It was Ky. Chi truly that started the revival of ΣAE, that gave us our first quarterly *Record* and our first two northern chapters.

Our Clarksville telescopes were on the University of Tennessee all through the late eighties without revealing a clue to hang a new chapter on. I wrote our Knoxville alumni repeatedly without getting an answer. Finally an opening came when Robert Barton McCallie entered Southwestern from Chattanooga. "Bob" was promptly initiated and became my most intimate friend of college days. He was the first of the four McCallie brothers in ΣAE. He knew a boy at the University of Tennessee with whom I corresponded

and through whom I got in touch with the group that became the new charter members of Tennessee Kappa, revived. My proposition to revive our chapter met with cordial response from these students, and after a sufficient preparation by correspondence they were all ready for the installation.

Tennessee was then a military college and the boys lived under pretty strict discipline in their barracks "on the Hill." Alpha Tau Omega and ΠΚΑ had each preceded ΣΑΕ here by several years but each also had died a-borning. Kappa Sigma and ΦΓΔ were on the hill when we returned there. Later ΣΧ, ΣΝ, ΔΤΔ and other younger orders followed, while the two earliest chapters on the campus have since been restored.

I went up to Knoxville February 23, 1890, arriving at night. Although I had not had any encouragement from the city alumni and had every reason to believe they were not interested in my project, I started out early next morning to have a look at some of them. I was curious to know what type of men they were to resist the barrage of letters that I had laid down on them. I was waiting at the insurance office of Robert Simmons, Emory and Henry '88, when he arrived about 8 a.m. and I fell for him on sight. He was a handsome boy, of cordial manner and military bearing, and to my surprise was the soul of cordiality and even enthusiasm. He had been expecting me! So had other Knoxville alumni! I was to go to his home as his guest for the week of my visit! It turned out that our fathers were friends and my father also had been a guest in their home while visiting Knoxville for Southwestern. Simmons rushed me down to meet William C. Sanders, a chapter mate from Virginia Pi, the sub rosa chapter that used to meet secretly at night up on the mountainside by pine-torch light. I was in the hands of friends.¹

ON THE HILL I was charmed with the personalities of those Tennessee boys in uniform and a more spanking fine lot I had never seen. Half of them were six-footers, and I had not been in the group an hour before we were old friends. Everything broke just right. The new group showed several natural leaders. Francis McKeldin Gettys was a tall handsome boy of the Tennessee mountains whose personality stood out like the general of an army. He was to become one of the very dearest friends of my life, was to dwell in Atlanta while I was there, and came to visit with me every year in Chicago until his untimely demise in 1920. Gettys had served the National Credit Men's Association as President with much distinction, and was a banker at Louisville, Ky., in the last decade of his life. John E. Shepherd was another natural leader who did much to make the occasion memorable and the chapter successful. He arranged the banquet at the Vendome. Charles Wesley Allen was a third leader who had helped materially to get the bunch together.

The installation took place February 28th when ten stalwart cadets took the vows. The others besides Gettys, Shepherd and Allen were Earl Elmo Carter, William Keith Anderson, Joseph S. Gibson, Marcus E.

Kirk, John W. Miles, Herbert N. Davis and Howard Walton W. French. Six of these were Knoxville boys.

After the ceremony the boys gave me a banquet at the Vendome which was fully attended by the city alumni. Eloquence drenched the gathering with infectious enthusiasm in which the new members proved as valiant speakers as the old. It was evident that Tennessee Kappa was already revived on a permanent basis and would take and hold first place thereafter among Greeks "on the Hill."

My founder's injunction to this chapter was to build strong membership in the four cities of Knoxville, Memphis, Chattanooga and Nashville. Whatever else they did, they must capture the cream of the students from these four cities and continue to hold this lead for all time. In particular Knoxville was to be made the distinctively ΣΑΕ city. We wanted the choicest sons of the first families of that city to come to look upon obtaining ΣΑΕ membership as a desired heritage when they entered college—which now has long been realized. How well our Tennessee chapter has lived up to that trust is evidenced by our large alumni roll of influential men in Knoxville and Memphis particularly.

This charge was one that I never failed to give any chapter I installed or visited. The chapter which fails to entrench itself deeply in its home community and in the leading cities which furnish its student body is very lacking in the art of building its own foundations deeply.

As was to be expected Tennessee Kappa made a good haul of initiates that fall. One of the first men to be initiated was John Netherland Heiskell, who became United States Senator from Arkansas and for many years has been famous as the editor of the *Arkansas Gazette* at Little Rock. Charles Edward Chambliss was another. He became entomologist at Clemson College, South Carolina. Others of that second group were Alfred F. Sanford, Charles McClung Rhea, Nicholas E. Logan, James Christie Rodgers, Harry M. McKeldin, Howard Cornick and Harper L. Chamberlain, all of Knoxville. There has never been a moment of doubt from the hour of ΣΑΕ's revival on the Hill that the University of Tennessee and the city of Knoxville are distinctively ΣΑΕ possessions. Latterly this chapter has again asserted her title to Chattanooga boys and her strength in Memphis alumni is proverbial. □

Note:

¹ Billy Levere records, with evident amusement, Bunting's first meeting with Sanders: "They [Bunting and Simmons] found him [Sanders] at his desk, a tall, strapping Tennessean. Simmons introduced 'Brother Bunting.' Sanders looked him over swiftly and then exclaimed: 'Is this Bunting, the man who has been writing me those fire-alarm letters? Why, you blamed little babe. I thought you were a grown-up man, forty-five years old, six feet tall, and with a heavy black beard. If I'd known such a kid was writing to me I doubt if I would have answered you at all.'" William C. Levere, *The History of the Sigma Alpha Epsilon Fraternity*, Vol. II (Evanston: Sigma Alpha Epsilon Fraternity, 1911), p. 117.

(Continued from page 32)

its attention to grass-roots sentiment. This province involvement, however, has helped make ΣAE's extension procedures a thing of Byzantine complexity. A few provinces take their extension duties—and opportunities—seriously and do help to ensure that ΣAE enters promising institutions. Province Epsilon (Georgia and Alabama) is a model in this respect. Most provinces, however, do little or nothing. Their intentions are good, but too often they do not have sufficient information to act perceptively on the extension situations that come before them.

DURING the past decade or two a lot of exciting new ideas have been bubbling up out of the provinces. Taken together, these ideas are revolutionizing the grass roots, and the revolution is spreading like wildfire. A few of the changes have been tested long enough to become familiar features in the life of some provinces.

One such sure-fire idea is the pre-convention convclave. It takes place in April or May of the year of a national convention. Its sole purpose is to examine proposed amendments to the National Laws of ΣAE which will come up at the convention in June. National convention delegates thus have a chance to be briefed on and to discuss important issues before ΣAE. They will probably cast informed votes at the June convention.

Another immensely successful recent innovation is the province mini-leadership school. In an abbreviated session packed into a day or two, the mini-leadership school makes available to as many as 20 or 30 men from each chapter in a province some of the educational benefits available at the annual national school at Evanston. As a direct service to undergraduate chapters it is unexcelled. In few other ways can chapters be kept strong or made strong more quickly or surely.

A few provinces have staged sports days—usually basketball tournaments—with great success. These are especially popular among undergraduates and are remarkably well attended. One of the happy results of these tourneys is a noticeable camaraderie among undergraduates, together with real identification with the province itself.

One or two provinces have begun to do something seriously about intra-province communication. The best by far is the *Province Tau Report*, now in its third year and edited by Archon Loren Boone, South Dakota State '72. In the province it is probably read by undergraduates more than is any other ΣAE publication.

An increasing number of provinces are picking up the cost of one delegate from each chapter to the Leadership School in Evanston. Of this one province archon reports "I cannot think of any investment that

pays off more handsomely for our chapters than does this one."

Many of these new ideas are pulled together in a new publication entitled *The Province Archon*, a manual of nearly 200 pages brimming with ideas and "how to do it" features for province leaders. Ably edited by Ken Tracey, Director of Programming in the national office, it surveys the range of potential



About 100 SAE members and delegates from eight chapters attended the first Province Tau Leadership School Jan. 16-18 at the University of Northern Iowa, Cedar Falls. They ate, they talked, learned and searched for the true meaning of brotherhood in Sigma Alpha Epsilon Fraternity. Turn to pages 7 and 8 for a complete report and photo album on Province Tau's experience in building these chapters.

Convention to meet April 10

VERMILION, S.D.—A review of projects, election of officers, and discussion of dues have been set for the 1976 Province Tau Convention, Saturday, April 10, at the University of South Dakota, Vermillion.

Province Archon Dan McGowan said the convention will open at 10 a.m. at the 210 Sigma House, 1856 Madison, Vermillion.

"This convention will be of a very businesslike nature, and hopefully all of the business will be completed by early afternoon," McGowan said.

The agenda calls for the Province Ordinal Committee to establish eligibility of delegates "as the first order of business," McGowan noted.

Dues, projects to be discussed. Other items set for discussion include Province Tau dues, Province projects including the leadership school, basketball tournament, and newsletter, election of officers, and such other matters of business as may be brought forward by any leaders or chapter attending." The archon added, McGowan noted that "registration is free."

(See CONVENTION, Page 8, Col. 2)

A weekend to remember...

About 100 SAE members and delegates from eight chapters attended the first Province Tau Leadership School Jan. 16-18 at the University of Northern Iowa, Cedar Falls. They ate, they talked, learned and searched for the true meaning of brotherhood in Sigma Alpha Epsilon Fraternity. Turn to pages 7 and 8 for a complete report and photo album on Province Tau's experience in building these chapters.

National SAE seeks chapter consultants

EVANSTON, ILL.—Want to travel? Visit 50 SAE chapters across the country each year? Help analyze chapter programs and improve the fraternity?

The national SAE office is looking "for a few good men to act as Education and Leadership Consultants," according to Ken Tracey, director of chapter services at the national SAE office. Tracey said the consultants work for one to two years "traveling all over the country helping chapters analyze their programs."

"The consultants, Tracey noted, are "experts in the field. They are trained and equipped to assist chapters in evaluating their programs and activities."

Province Tau has had several chapter consultants including Jeff Sheldon, current consultant for the Province.

For more information write Tracey at Box 1856, Evanston, Ill. 60204.



Lambda-Pi sweeps tourney...

New Lambdas #1 took down the #2 and #3 Division of the second annual Province Tau Basketball Tourney Feb. 17-21 at Mt. St. P. when 72-69 they beat Delta for the A title. For a complete tourney summary and photo essay, turn to pages 10 and 11. More than 200 SAE's formed 23 teams and played 22 games in the tourney.

The Province Tau Report, published several times a year, is a model province publication. It reaches chapters and alumni in Iowa, Nebraska and South Dakota.

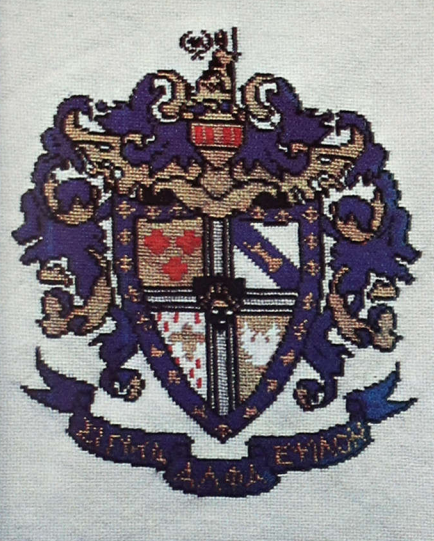
activities and services in the province. If any one province were to do half the things suggested, it would be accounted a rousing success.

And many of our provinces are responding well to the challenges of the time. Real strengths are present in nearly all of them. Weaknesses persist, to be sure, but the promise for the future is bright.

"Through the years the province has been ΣAE's weak link," says old southeastern stalwart Robert L. Cousins, Mercer '24, "but it surely doesn't take a prophet to predict that we are going to see the province become one of the fraternity's great strengths."

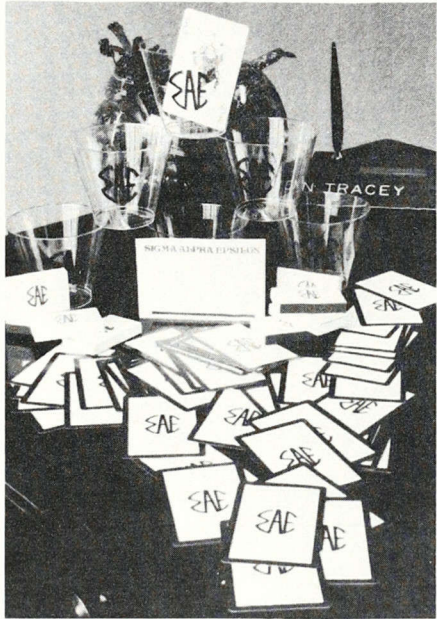
Bob Cousins has helped to make his prediction a reality in the province where ΣAE was born. Others will make it a reality from coast to coast. And it won't be long coming. □

ATTENTION ALL ΣAEs! The Record solicits manuscripts on ΣAE topics. Articles should have general interest among undergraduates and alumni and should contain between 500 and 1500 words. Send ms. to THE RECORD, P.O. Box 1856, Evanston, Ill. 60204.



Needlepoint Kit — Includes yarn, canvas, and instructions. 11½ x 15" finished. \$20.00

ΣΑΕ Club Tie — Navy blue with red and white design. \$7.00



Summer Rush Items — Plastic 9 oz. tumblers \$1.50, Playing Cards \$2.50, Box Matches \$4.00, and Name Tags \$3.50.

ΣΑΕ Merchandise

Merchandise Sales
Sigma Alpha Epsilon
P.O. Box 1856
Evanston, IL 60204

Quality	Item	Price	Quantity	Item	Price
_____	Needlepoint Kit	\$20.00	_____	Plastic 9 oz. Tumblers (50 in pkg.)	1.50
_____	ΣΑΕ Club Tie	7.00	_____	Jerseys — maroon, gold, navy	7.00
_____	Playing Cards (per deck)	2.50		M L XL	
_____	Name Tags (100 in pkg.)	3.50	_____	Jacket — Unlined	11.00
_____	Box Matches (100 per box)	\$4.00		M L XL	

Name _____

Street Address _____

City, State, Zip Code _____

Add 5% Sales Tax in Illinois

BACK COVER — To celebrate the American Bicentennial, the men of Florida Sigma at the University of West Florida made the photograph on our back cover. The picture was sent to the National Office by John Brewer '77 and L. F. "Bud" Hattaway '77 "with sincere thanks for a most meaningful 42nd Leadership School this past summer."



The Record of Sigma Alpha Epsilon
P.O. Box 1856, Evanston, Ill. 60204
Postmaster: Please send notice of Undeliverable
copies on Form 3579 to above address.

Second class postage paid at Evanston, Ill.
and at additional mailing offices.