

THE RECORD

OF SIGMA ALPHA EPSILON

FALL 1984

The 1984 Leadership School



Doing What We Do Best

SIG ALPHS IN SPORTS

The National Staff

Here are the men who work full time at the National Office in Evanston to provide the many services ΣAE has to offer all its members.

The National Office Staff for 1984-85 includes: first row (l-r) E&L Consultant Scott Haggard, Extension Director Grant Gier, Eminent Supreme Recorder Ken Tracey, Director of Chapter Development Stan Strom, E&L Consultants Glenn "Woody" Wood, Mike Fahrbach, Keene Miller and Wade Quinn; second row (l-r) Director of Finance and Administration Jeff Arnold, Director of Development for The Levere Memorial Foundation Dave Arendt, Director of Communications and Managing Editor of *The Record* Mark Smith, and Director of Programs for The Levere Memorial Foundation Jeff Kinzler.



FROM THE EDITOR

JOHN O. MOSELEY ONCE WROTE OF THE 12 things he would do if he were a pledge again. They included treating fellow members with genuine admiration and respect, reading and studying the history of the fraternity and other tasks that required friendship, loyalty and honor. If I were to be asked to name the one thing I would do if I were an undergraduate again, it would be to attend Leadership School. I did not attend the school as an undergraduate, but when I have seen what a great experience it is for all who come here, I wish I had gone at least once. Leadership School is the embodiment of every quality which John O. Moseley spoke of in his famous list, for it is there where fraternity zeal, that invisible yet so potent quality, shows itself to everyone who takes part in it. I know that if every alumnus could see the kind of men who come away from Leadership

School, they would be encouraged about the future of this fraternity. And if they were not thinking of the future already, they would take new interest. Leadership School is the subject of the cover of this fall issue as it was last year because of its tremendous impact and importance to ΣAE.

Elsewhere in this issue are two stories which show the kinds of challenges being met by many chapters; one challenge which the chapter brought on itself, and one over which another chapter had no control. The chapter at the University of Cincinnati recently brought itself back from a university suspension and National Office probation after a tasteless party that roused a furor in the community. The chapter at Washington and Lee University in Lexington, Virginia, will be meeting a challenge imposed by the hard realities of university

survival. The university will be admitting women for the first time in its 235 year history, and it will have quite an effect on the survival of some fraternities at W&L. Both these stories were written by men who were closest to the situation, men in the chapter. I think you will find them both interesting and perhaps relevant to your own chapter experience.

Many thanks to Jack Rushing who compiled the list of ΣAE professional and collegiate athletes which also appears in this issue. Look for an ΣAE All-American football team next year, which will also be researched and chosen by Jack.

Phi Alpha,



Mark R. Smith
Managing Editor



OF SIGMA ALPHA EPSILON
PUBLISHED CONTINUOUSLY SINCE 1880
CIRCULATION 67,800

Mark R. Smith
MANAGING EDITOR

Kenneth D. Tracey
EDITOR

Joseph W. Walt
CONTRIBUTING EDITOR

Frances Gillan
CIRCULATION MANAGER

Ylonda Gault
Jacqueline Haynes
EDITORIAL ASSISTANTS

Copyright ©1984 Sigma Alpha Epsilon Fraternity.

Published Spring, Summer, Fall and Winter by Sigma Alpha Epsilon Fraternity (USPS 457620). Second class postage paid at Evanston, Illinois and at additional mailing offices. Postmaster: Notice of change of address (Form 3579) should be sent to P.O. Box 1856, Evanston, Illinois 60204.



CONTENTS

Alumni Relations — Spreading the Word and Asking for Money	
Third in a three-part series on improving alumni relations	2
The 1984 Leadership School	
An account of another fun and successful four days at the Temple, Northwestern University and Chicago	3
Alumni News	7
Chapter Eternal	
George Gallup — he taught us a lot about ourselves	9
Founder Members	12
SAE Sportspage	
An update on SAEs in professional and college sports	18
The Education of a Chapter	
After being suspended for a racist party, a chapter turns to educate an entire university	21
Chapter News	
Michigan Gamma gets a new chapter house, Virginia Sigma braces for radical change	23
ΣAE Newsgram	28

ALUMNI RELATIONS

Part III: Spreading the News and Asking for Money

by Bruce Hornbuckle

SEVERAL YEARS AGO, THE NATIONAL Office agreed to help an Σ AE chapter raise its level of alumni involvement. A number of meetings were set up with several area alumni and chapter members during a visit by the E & L Consultant. In one of those meetings, the chapter members learned that some of their alumni weren't really reading their mail.

"To tell you the truth," one alumnus said, "I get a lot of mail I don't have time to read. And everything I get from you, when I get anything at all, is a request for money."

"You know, it really made me mad at first," the chapter EA said later, "But he's got a point. All we have ever mailed out are solicitations for money."

Rule Number One in alumni communications: Refrain from making every mailing a request for cash. All too often, these solicitations are the only communications alumni ever receive from their chapters. When alumni programming has been properly planned (see Part I of this series, *Getting Brothers Back to the House* in the Spring issue), the next step is to expand your communications with alumni beyond the money appeal stage.

Perhaps the simplest method of improving alumni communications is to print invitations to regularly scheduled chapter activities and then mail them to the alumni. This enables the chapter to include the alumni in activities they will enjoy without the necessity of planning a function exclusively for the alumni and spending a lot of extra money in the

process. Alumni can be invited to homecoming, rush parties, Founders Day, formal dances, and other events.

The most important aspect of any mailing to alumni is to get the word out early, and get it out often. Advance notice cannot be over-emphasized.

The best practice is to mail your invitations or notices three months in advance of the event with reminder postcards sent at one-month intervals. This lets the alumni believe that you are well organized, avoids conflicts in their schedules, and enables them to help you increase attendance by talking about the event to other alumni in those "old college buddy" telephone calls.

Some chapters planning their 25th, 50th, or 100th anniversary celebrations have allowed up to six months or one year advance notice for their initial mailing. One very successful idea is to plan big alumni events with a large committee of alumni. Of course the chapter will remain largely responsible for planning most of the activities, but the idea here is to invite your alumni to these events under names they will recognize on the mailings and invitations. This idea works. It's a copy of the "decade chairman" idea used by most colleges and universities in their fund-raising activities.

Other than newsletters, this method of communicating with alumni are certain to improve the alumni involvement at the house.

Another thing to think about when asking for money is to invite the alumni

to the house so that they can see for themselves what needs to be done. Alumni are more likely to give if they know there is a specific account and a definite proposal on the project.

ONE OF THE MOST IMPORTANT methods of improving communications with alumni is to publish a chapter newsletter at least annually. Ideally, the newsletter should go out three or four times a year. Since publishing costs can be prohibitive, an alternative is to send out one official newsletter and supplement that with a number of additional flyers and mailings during the year.

Newsletter printing costs can be reduced. First, check with your college and see if the chapter can use their printing facilities. Most universities will gladly oblige since the chapter is communicating with the school's alumni, too. Cooperation by the school can virtually be assured if the chapter provides the school with a list of new addresses for "lost" alumni.

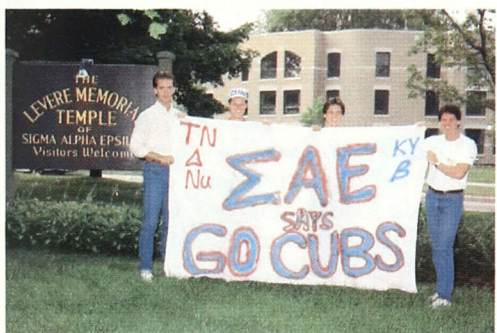
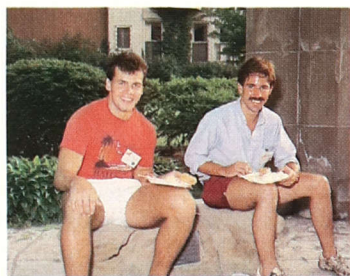
If the college won't cooperate, look for an Σ AE alumnus in the community who works in the printing business. Perhaps he will be able to help you print the newsletter at cost.

Mailing expenses can also be reduced. Many chapters send much of their mailings out under the school's bulk rate mailing permit. The savings on postage are phenomenal when this is used.

Realize that there are other audiences for the newsletter besides alumni. College administrators, rushees, parents, friends and chapter members themselves can all be expected to take an interest in the newsletter.

Remember that effective alumni programming requires solid alumni communications. Invite the alumni to every possible event. Send out mailings, flyers, postcards, newsletters, and anything else that's legible. And don't forget your audience. Organize the newsletter to include articles that will be of interest to alumni. And again, mail early, and mail often! ■

This is the third of a three-part series on methods of improving alumni programming at the chapter level. It addresses the concerns of alumni and chapter members alike, using examples, suggestions and guidelines based on the actual experiences of about 40 Σ AE chapters.



The 1984 Leadership School proves once again how well the fraternity works when we are

Doing What We Do Best

The halls of Levere Memorial Temple are relatively quiet for 11 months out of the year. That is, relative to the ΣAE Leadership School. During the first week in August every year, hundreds of young men go there for the Leadership School. They walk around the chapel craning their necks, fixing their gazes on the almost hypnotic brilliance of the Tiffany windows that tell the glorious histories of the United States and our fraternity. The Temple comes to life once again, and the portraits of Levere, Nippert, McKinley and others look down upon another generation of leaders who come here because they want to make a difference. It's almost as if our national fraternity is given another dose of assurance of why it exists — to inspire its members to better their chapters, to meet and form friendships with others like them around the country. In short, to make them feel good about why they belong to Sigma Alpha Epsilon.



A group of brothers pause during dinner.

The National Office was caught by surprise this year when 536 undergraduates and 25 chapter advisors showed up for the 1984 Leadership School, held August 5-8. Over 100 more men attended this year's School than had attended last year's session. One hundred and fifty-eight chapters (the greatest number ever) and five colonies were represented during the four-day event, which will celebrate its 50th anniversary in 1985.

The 1984 Leadership School officially began with the opening session at McCormick Auditorium on the Northwestern University campus directly across the street from the Temple. With the auditorium overflowing with ΣAEs, the Supreme Council, National Staff and Leadership School faculty were introduced. When the session was over, the undergraduates went to their first of five chapter meetings to be held throughout the School.

This year, Leadership School participants were divided into chapters of about thirty with delegates who came from schools and chapters similar in size. Whether their schools were public or private was another consideration in chapter assignments. This was done so that discussions on rush, management, pledge education and chapter programming would hold basically the same relevance for everyone in the meeting. A new concept at Leadership School this year was to place brothers who had been to Leadership School before into their own chapter meetings in order to discuss how well their previous Leadership

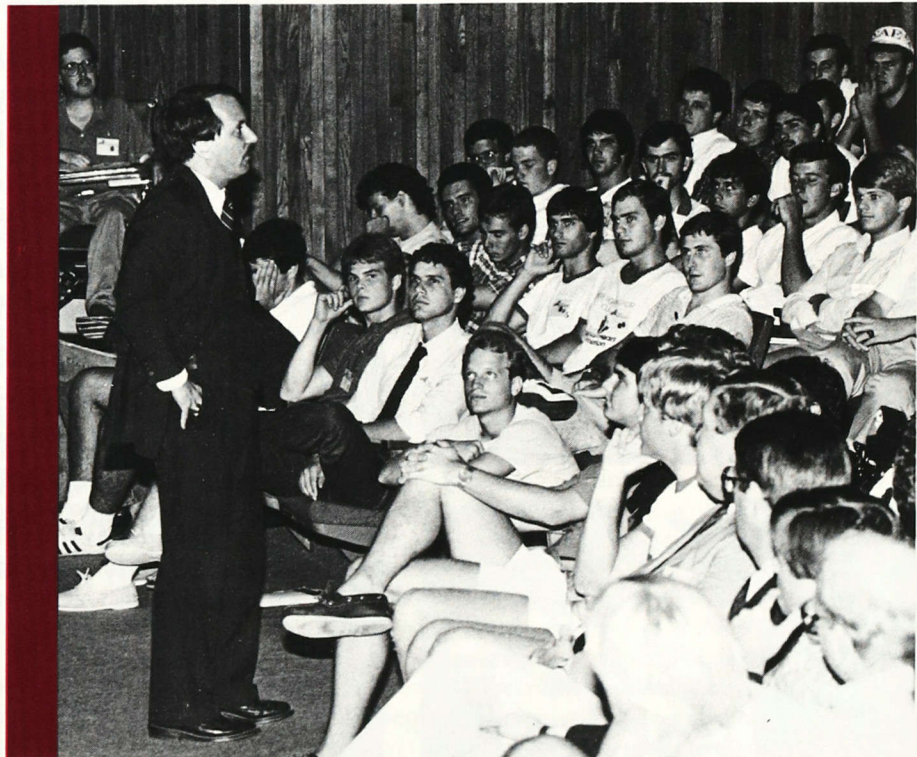
School experience had helped them and their chapter during the school year. This year all 25 Province Archons came to Leadership School and had the opportunity to meet with all of the delegates from their particular province to discuss future province events and other regional-related topics.

While these meetings were the core of the Leadership School curriculum, they were just a part of the many activities and

sessions that were available to participating brothers. Seminars were offered in 29 topics ranging from Eminent Archons and Treasurers to theme parties and menu planning. Brothers could also choose to participate in special interest groups that included the honor pledge program, the Leadership School chorus and jazz band recording the School in the slide show group, and a few sessions just for colony members.

The honor pledge program was a great success, drawing 36 pledges from chapters around the country. The Leadership School pledge program culminated in their initiation at the Alice Millar Memorial Chapel, next door to the Temple. One of the initiates, Albert Reichert, Mercer '87 (*Georgia Psi*), was the first triple legacy to be initiated at Leadership School.

While the Leadership School is an important time for all who participate, it just so happened this year that it fell right in the middle of the 1984 Los Angeles Olympic Games. The rounds of chapter meetings, seminars and other events during the day blocked out any time to view the spectacular event. Not to worry, though. ΣAEs have a way of not missing a thing. A large 52-inch TV screen was erected in the Panhellenic Room of the Temple for Olympic view-



Dave Westol gave another fine presentation on hazing and alcohol abuse which proved to be one of the most popular events of the school.

1984 Leadership School Awards

The John O. Moseley Award for Fraternity Zeal

Alabama Iota, Birmingham Southern College

The John H. Baugh Award for Outstanding Pledge Programming

New York Epsilon, Rensselaer Polytechnic Institute

The Chapter Achievement Award

Nebraska Lambda-Pi, University of Nebraska
Minnesota Alpha, University of Minnesota
Kentucky Epsilon, University of Kentucky
Iowa Sigma, Simpson College
Massachusetts Delta, Worcester Polytechnic Institute

Florida Epsilon, University of Central Florida
Pennsylvania Gamma, Lafayette College
Louisiana Rho, Louisiana Tech University
Pennsylvania Phi, Carnegie-Mellon University
Montana Alpha, Montana State University
South Dakota Theta, South Dakota State University

Arizona Alpha, University of Arizona
Pennsylvania Zeta, Bucknell University
Alabama Iota, Birmingham Southern College
Ohio Tau, Miami University
Ohio Kappa, Bowling Green State University
Florida Sigma, University of West Florida
Tennessee Kappa, University of Tennessee

The SAE Leadership Foundation Award for Excellence in Community Relations

Texas Theta, Baylor University
Kentucky Epsilon, University of Kentucky (tie)

Communications Awards

Best Typeset Newsletter: South Dakota Theta, South Dakota State University

Best Non-typeset Newsletter: Kansas Beta, Kansas State University

Best Rush Brochure: California Tau, California Polytechnic University at San Luis Obispo

Best Slide Show: Kansas Beta, Kansas State University

Best T-Shirt: Florida Epsilon, University of Central Florida

Best Scrapbook: Kansas Beta, Kansas State University

Outstanding Chapter Advisor Award

James Cameron, Denison University
James Wespiser, Miami University/Ohio
James May, University of Kentucky
Thomas Devine, University of Minnesota
Loren Boone, South Dakota State University
Richard Hooker, Worcester Polytechnic Institute
Alvin Williams, University of Southern Mississippi

James Sakers, University of Maryland and at Towson State University

Timothy Gilroy, Lafayette College

Chapter Housing Award

Minnesota Alpha, University of Minnesota
Mississippi Sigma, University of Southern Mississippi

Most Improved Scholarship Award

Tennessee Delta, Tennessee Tech University

Outstanding House Corporation Award

Ohio Mu, Denison University

Outstanding Chapter Alumni Association

Mississippi Sigma Alumni Association, University of Southern Mississippi

Outstanding Area Alumni Association

Pensacola, Florida Alumni Association

ing every night during the School.

Dave Westol, assistant prosecuting attorney for Kalamazoo County, Michigan and a vice-president of the Theta Chi fraternity, packed McCormick Auditorium Monday night with hundreds of delegates who came to hear his fiery attack against hazing and alcohol abuse. This was the third year that Westol has spoken at Leadership School, and the delegate evaluations indicated that this was the most popular event of the School

this year. Westol presented another intimidating and provoking scenario of the legal dangers of hazing.

ΣAE's historian, Dr. Joseph Walt, who told his inspirational "Story of ΣAE" on Monday morning, also provided a high point at Leadership School. His focus was basically the story of five men: Noble Leslie DeVotie, Harry Bunting, Billy Levere, Alfred K. Nippert and John Moseley; five giants who did so much to help in the formation and

growth of ΣAE and to guarantee its strength and vitality in today's world.

On Tuesday, some of the delegates mustered their energy to compete in the Minerva's Highway Run, a combination of a one and three mile race. Later in the morning, a tribute was presented in honor of Norman Pritchard, *Franklin '04 (Indiana Alpha)*, the fraternity's legal counsel who celebrated his 100th birthday on July 4. Pritchard was not able to attend because of the 95 degree heat, but



ESA Johnny Warren presents the Moseley Award to the delegation from Alabama Iota at Birmingham Southern.

Joe Walt delivered an address telling of his enormous contribution to ΣAE (see the summer issue of *The Record*).

Wednesday was the last day of the School. After the morning's last chapter meeting, delegates gathered to hear past ESA Glenn T. Nygreen deliver his version of the meaning of the ΣAE insignia in common, unritualistic language. The afternoon was filled with the formalities of the initiation of the Leadership School pledges and the traditional school photograph, taken on the back lawn of the Temple. Including some 600 people into one photograph took time and a lot of skill and patience, but ultimately everyone was squeezed in.

That night the final banquet was held at the Orrington Hotel with 549 people attending. The highlight of the banquet, and of the Leadership School, was the presentation of the John O. Moseley Award for Fraternity Zeal which was given this year, for the second consecutive year, to the Alabama Iota chapter at Birmingham Southern College in Birmingham, Alabama. Others nominated for the Zeal Award for 1983-84 included the chapters at the University of Central Florida (*Epsilon*), Worcester Polytechnic Institute (*Massachusetts Delta*), the University of Nebraska (*Lambda-Pi*), Rensselaer Polytechnic Institute (*New York Epsilon*), Davidson College (*North Carolina Theta*), South Dakota State University (*Theta*), and Middle Ten-

nessee State University (*Beta*).

It had been a hot, humid week in Evanston, and despite the long waits in line for meals (some delegates had even

stood in the pouring rain outside the dining hall), and the sometimes uncomfortable nights in dorms without air conditioning, the enthusiasm and interest in making Leadership School the best possible experience was never stifled. Director of Leadership Training Ray J. Artigue, *Arizona State '76 (Beta)*, and the Leadership School Planning Committee will be planning a spectacular 50th Leadership School next August, and there will be a concerted effort to make sure that every chapter in Sigma Alpha Epsilon be represented.

Undoubtedly, the Leadership School is the single greatest experience next to initiation that an ΣAE can participate in, no matter how old, how far away they travel, what kind of chapter he comes from. He realizes when he comes here that his chapter isn't the only one that has a certain kind of problem. His concerns or what he sees best are seen by others as well. Almost by reflex, he soaks up the tradition of ΣAE through its Ritual, conversations, singing and exchanging ideas with others like himself. The beauty of the school is that it is education joined with fraternity, each complementing the other. ■



New Chapel Organ Dedicated

Before the 1984 Leadership School was underway, a new organ for the chapel was dedicated. After more than fifty years of use, the original pipe organ which had provided music for countless ceremonies, church services and weddings, was in need of a total renovation. Through the immense generosity of past Eminent Supreme Archon Russell P. Heuer, Jr., *Pennsylvania '55 (Theta)* and his father, Russell P. Heuer, Sr., *Pennsylvania '17 (Theta)*, The Levere Memorial Foundation was able to purchase a new organ at a cost of over \$70,000. ■

T.H.E. Award Call for Nominations

SINCE ITS BEGINNING, SIGMA ALPHA Epsilon has turned out men who have left their mark on the world for generations to come: President William McKinley, Author William Faulkner and golf great Bobby Jones are just a few at the tip of a reservoir of talented gentlemen who have served Σ AE well through their professional pursuits. This year, the Supreme Council of Σ AE passed a resolution to form a new national award — The Highest Effort Award — to recognize men who through their professional successes have brought continued good name to Sigma Alpha Epsilon. Nominations are now being taken by the National Office for 1984 recipients.

The award was first established in 1977 by the New York City Alumni Association, and since that time, 64 men have won the award. Some of the winners have been third baseman for the San Diego Padres Craig Nettles, Michigan

football coach Bo Schembeckler, pollster George Gallup, actors Lloyd Bridges and Patrick O'Neal, U.S. Senator Peter Domenici and columnist James K. Kirkpatrick.

Nominations for T.H.E. Award winners will be accepted until November 30, when the selection committee will begin to review the award candidates. The committee consists of Eminent Supreme Herald David M. Lance, Eminent Supreme Recorder Kenneth Tracey, and President of the New York Alumni Association, Thomas R. Kessler.

There are 10 categories for The Highest Effort Award: athletics, banking, business, communications and journalism, education, entertainment, finance, law, federal and state government, philanthropy, and religion. The criteria for the award are that each nominee must have made a significant contribution to society through his professional life, that this contribution

demonstrate the ideals of the fraternity and the True Gentleman, and that his service will be an example for others to follow.

Nominations have already begun to flow into the National Office, so anyone interested in nominating a brother should do so by November 30. Winners will be announced in late December, and they will be presented their awards at their chapter or alumni association Founders Day in March of 1985. Send nominating letters to:

**Sigma Alpha Epsilon
The Highest Effort Award
% Mark Smith,
Director of Communications
Post Office Box 1856
Evanston, Illinois 60204-1856**

Miami Alumni Association

Plans are underway to reactivate the Miami Alumni Association this fall.

Alumni in the Miami, Florida area who are not on the mailing list should send their name and address to:

**Marc Letendre
11123 North Kendall Drive, C104
Miami, Florida 33176
(305) 274-3493, 595-0201**

Call for Founders Day Celebration Dates

It's time to begin planning 1985 Founders Day celebrations, and *The Record* wants to help get the word out to your alumni! In the Winter 1983 issue of the magazine, Founders Day celebration dates were published for many alumni associations around the country to help notify otherwise uninvolved alumni of the upcoming events in their area. The winter issue (which includes the Annual Report) is sent to every alumnus for whom the National Office has a good address. If you wish to have your Founders Day date publicized, send the information (which should include the date, location and contact person with a phone number) to Mark Smith, Managing Editor, *The Record*, P.O. Box 1856, Evanston, Illinois 60204-1856.

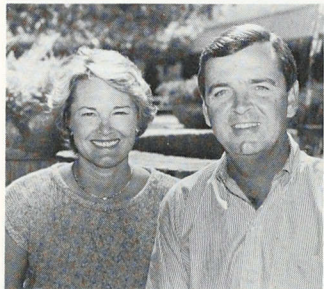


On June 11, two Σ AE brothers from Shawnee, Oklahoma helped carry the Olympic torch across the United States for the 1984 Los Angeles Olympic Games. The 8,700 relay stretched across the country, passing through Oklahoma City where Bill and Bob Ford carried the torch for several kilometers. Bob Ford, Oklahoma '66 (Kappa), right, is shown passing the flame to his brother Bill Ford, Oklahoma '64 (Kappa).

Alumni News Briefs

ΣAE Alumni Close a Gap at Arizona

Three alumni of the Arizona Alpha chapter at the University of Arizona have been included into the Presidents Club of the University of Arizona Foundation, through their gifts which helped the Foundation reach the \$10 million mark in contributions.



Mr. and Mrs. Charles Hall III

Milestone memberships 999, 1,000 and 1,001 belong respectively to **Mr. and Mrs. Charles W. Hall, III**, **Mr. and Mrs. Jay C. Stuckey, Jr.**, and **Mr. and Mrs. V. S. "Skip" Corley**. The Presidents Club honors the most generous donors to the UA Foundation, a nonprofit corporation that raises and administers funds for UA. Presidents Club membership implies a gift of \$10,000 or more to the Foundation. Thus, 1,000 memberships represent at least \$10 million in gifts.

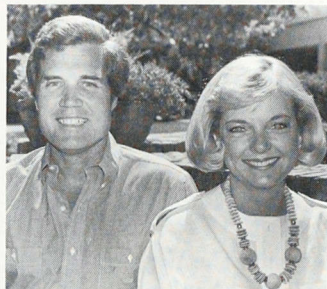
Charles Hall, III, *Arizona '64 (Alpha)*, is president of Charles W. Hall, III and Associates realty-investment-development firm. Hall is also a Founder Member of The Levere Memorial Foundation in addition to his membership in the Presidents Club. Jay Stuckey, *Arizona '62 (Alpha)*, is a partner in the law firm of Jennings, Strouss and Salmon; and Skip Corley is a vice president for Arizona operations of Arizona Portland Cement.

Alums Inducted into the URI Hall of Fame

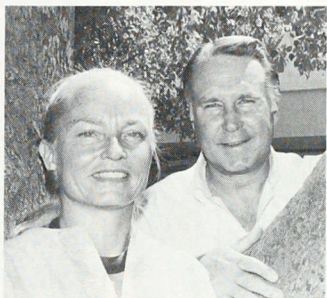
Gaetano G. "Guy" Calise, Jr., *Rhode Island '59 (Alpha)*, and **David W. Partington**, *Rhode Island '38 (Alpha)* were inducted

into the University of Rhode Island Hall of Fame on October 19.

Calise was an outstanding track performer at URI, excelling in the dash events. Formerly of East Providence, Rhode Island, Calise now resides in Rockville, Maryland. He was worldwide director of facilities for U. S. Naval Communications before becoming the assistant director of the National Zoological Park of the Smithsonian Institution in Washington, D. C.



Mr. and Mrs. Jay Stuckey, Jr.



Mr. and Mrs. Skip Corley

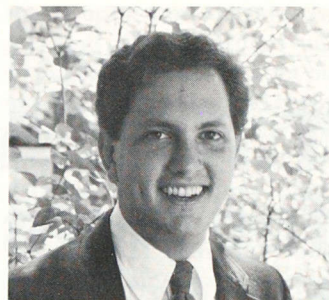
Partington was an outstanding three-sport athlete at URI, earning nine letters in basketball, tennis and track. Now retired after 35 years with Allied Corporation, he lives in Myrtle Beach, South Carolina.

DU Alums Honored with Awards

Two alumni of the Colorado Zeta chapter at the University of Denver recently received two of the most prestigious awards presented by the university. During late-spring ceremonies, **Franklin Burns**, *Denver '36 (Colorado Zeta)*, received the University of Denver Alumni Association's Award for Outstanding Community Service. Burns, a Denver real estate developer, was honored for

work with a variety of community organizations.

Brian Kitts, *Denver '83 (Colorado Zeta)*, was honored as Colleague of the Year — the most prestigious award presented by the student body to a member of the faculty or administration. Kitts is Director of Alumni Giving at DU, and was honored for his outstanding contribution to student publications and the DU greek system. Kitts presently serves as chapter advisor to the Colorado Zeta chapter at DU and as advisor to the greek honorary society, the Order of Omega.



Brian Kitts

Brotherly Succession at Norfolk Naval Station

On August 24, **Captain Kelsey S. Stewart**, *Miami '60 (Ohio Tau)*, succeeded **Captain Thomas J. Moore**, *St. Lawrence '58 (New York Rho)*, as the commanding officer of the Norfolk Naval Station in Norfolk, Virginia. The Norfolk Naval Station is the largest naval base in the world, home port of the 105 ships in the U.S. Atlantic Fleet. Located on 1400 acres of land where the James River meets the Chesapeake Bay in southern Virginia, the base is home to 59,000 military personnel and their families. Captain Moore assumed command of the Norfolk Station in September 1982.

Taschner named Fullbright Scholar

Dana Taschner, *University of Southern California '83 (Gamma)*, has been awarded a Fullbright Scholarship to study for a Master of Letters degree at Oxford University, England. Taschner received the coveted award after graduating from USC with highest honors. The former All American swimmer is currently operating a chain of retail linen stores he created as a venture project in the USC Entrepreneur Program.



Captain Kelsey S. Stewart, *Miami '60 (Ohio Tau)*, left, helps cut the cake with Captain Thomas J. Moore, *St. Lawrence '58 (New York Rho)*, at the ceremony where Kelsey took over command of the Norfolk Station from Moore.

George H. Gallup, 1902-1984

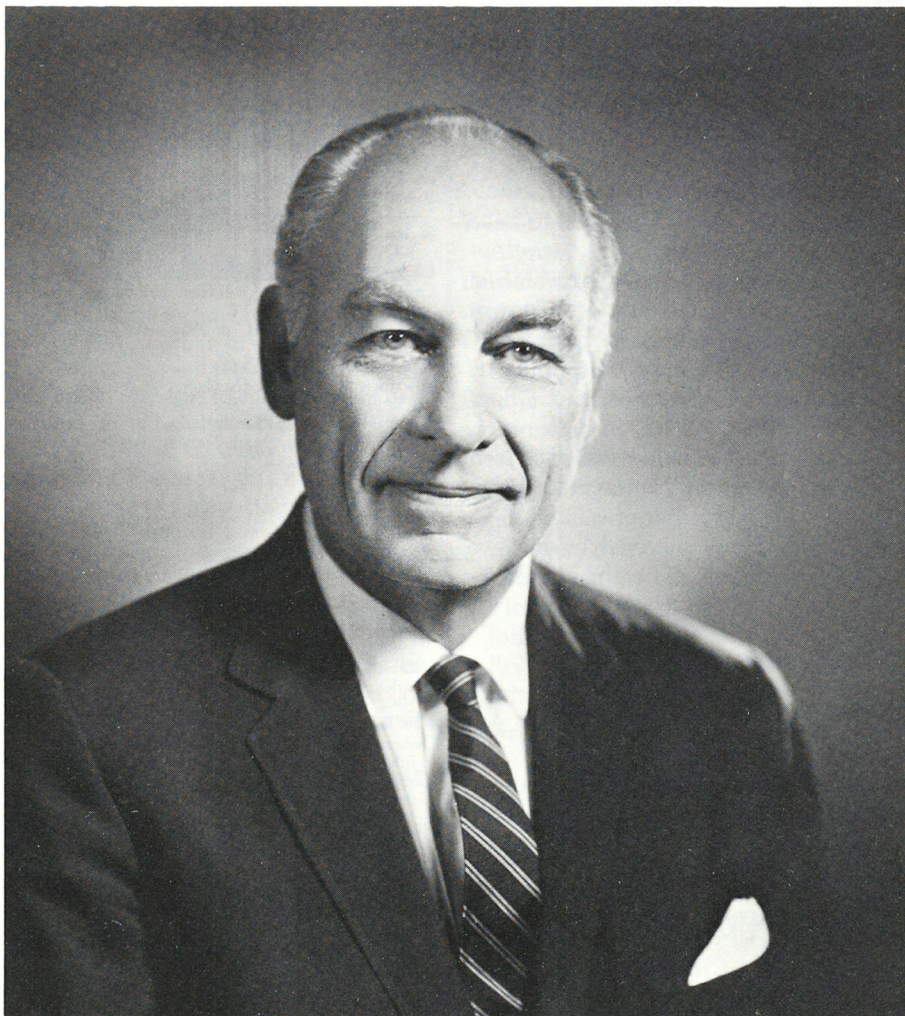
The man who virtually invented public opinion polls, George Gallup, *Iowa '22 (Beta)*, died July 27, 1984 at the age of 82.

Gallup was a doctoral candidate at the University of Iowa in the twenties when he came to the conclusion that public opinion, like any other commodity, could be accurately measured. Using scientific methods of random sampling, he pioneered the technique that has become regular practice for such organizations as the Lou Harris Poll and the Nielson ratings. His first political poll was conducted for the Democratic candidate for state treasurer of Iowa — his mother-in-law — in 1932. He never worked for a politician again. And was so dedicated to being neutral that he refrained from voting.

Politics was not the only field into which Gallup delved his research. Public opinion on subjects from buying new cars to religion did not escape his need to know what people thought. The press dubbed him the Human Yardstick. He made the cover of *TIME* magazine in 1948, the same year he predicted that Thomas Dewey would defeat Harry Truman for the presidency. He was wrong then, and even abandoned political polling for a time. But it did not lessen his grip on the pulse of this country's moods and opinions. Upon his death, the *Washington Post* called him a "pioneer whose insights and integrity helped people around the world understand their societies and themselves..."

Gallup founded the Gallup Poll in 1935, of which he remained the chairman until his death. Since 1937, public opinion affiliates of The Gallup Poll have been organized in 35 countries. He was also the organizer of Quill and Scroll, an international honorary society for high school journalists, which has a total membership of over one million. He taught journalism at Iowa, Northwestern and Columbia universities.

He lived with his wife, Ophelia, on a 500-acre farm near Princeton, New Jersey. He had recently become involved with the New Jersey Alpha chapter at



George Horace Gallup

Princeton University, helping the new chapter raise money from Σ AE alumni in the area. In May of this year, Gallup was given the Iowa Award, his home state's most prestigious honor, from Iowa Governor Terry Branstad.

On September 30, the brothers of the Iowa Beta chapter held a memorial service for Gallup at the Trinity Church in Iowa City.

Delmer F. Weston

Delmer F. Weston, *Puget Sound '68 (Washington Gamma)*, a former Education and Leadership Consultant with the

National Staff, died on July 2, 1984 following a long illness.

He served Σ AE first as Eminent Archon of Washington Gamma and then as an E & L Consultant at the National Office. He then became associate dean of men at the University of Idaho where he attained his masters degree in psychology. He then became assistant dean of men at his alma mater, the University of Puget Sound, and subsequently became a member of the administrative staff at the University of Southern California. At the time of his death, Weston was medical clinic manager in Spokane, Washington, where he lived

with his wife, Tobi and her daughter, Courtney.

Several of Weston's close friends from college have established a scholarship fund with The Levere Memorial Foundation to benefit the Washington Gamma chapter at the University of Puget Sound in his memory.

Theodore F. Olt

Theodore F. Olt, *Cincinnati* '28 (*Ohio Epsilon*), a retired assistant to the president of Armco, died May 30, 1984, at his home in Middleton, Ohio. He was 79 years old.

He joined Armco in 1928 as a metallurgist, and in 1934 was chosen to head stainless steel research and development. He rose to director of research in 1947 and was elected vice president of research and technology in 1958.

Olt was awarded in 1974 the domestic steel industry's highest honor, the Benjamin F. Fairless Award, in recognition of his distinguished achievement in iron and steel production. He was preceded in death by his wife, Marjorie D. Olt, in July, 1978. He is survived by his two sons, two brothers and eight grandchildren.

Chapter Listings

ALABAMA MU (Alabama)

Thomas F. McDowell, '31, of Birmingham, Alabama, on January, 1984.

ARIZONA ALPHA (Arizona)

Lt. Col. Oakley K. Morton, '40, of Scottsdale, Arizona, on October 28, 1983.

ARKANSAS ALPHA-UPSILON (Arkansas)

Captain John T. Griffith, '39, of Pensacola, Florida, on August 1, 1984.

Benjamin C. Isgrig, '46, of Little Rock, Arkansas, on April 4, 1983.

CALIFORNIA ALPHA (Stanford)

William L. Cohagan, '67, of San Antonio, Texas, on February 5, 1984.

Dr. Douglas K. Duncan, '43, of San Francisco, California, on February 1, 1984.

Henry T. Graham, '22, of Mountain View, California, on December 18, 1983.

Wilson H. Hanna, '50, of Fresno, California, on July 23, 1984.

Dr. Reginald S. Rood, '27, of Napa, California, on December 8, 1983.

CALIFORNIA BETA (Berkeley)

George R. Wallmann, Jr., '27, of Eugene, Oregon, on February 1, 1984.

CALIFORNIA GAMMA (Southern California)

Walter K. Wilson, '32, of Fallbrook, California, on June 3, 1984.

CALIFORNIA DELTA (UCLA)

Charles Stahl, '52, of Culver City, California, on April 30, 1984.

Monte M. Miller, '56, of Woodland Hills, California, on April 22, 1984.

CALIFORNIA LAMBDA (Cal State-Long Beach)

Fred S. Dean, '19, of Long Beach, California, on December 11, 1983.

Kurt Nicolau, '87, of Los Alamitos, California, on September 4, 1984.

CALIFORNIA PI (Cal-Sate-Fullerton)

Norman F. Derieux, '78, of San Luis Obispo, California, on August 24, 1984.

COLORADO DELTA (Colorado State)

Leo M. Petersen, '42, of Lakewood, Colorado, on March 21, 1984.

John R. Stephens, '32, of Fleming, Colorado, on April 3, 1984.

COLORADO ZETA (Denver)

Howard R. McClendon, '26, of Sun City, Arizona, on April 28, 1984.

COLORADO LAMBDA (School of Mines)

Karl W. King, '26, of Topeka, Kansas, on July 22, 1984.

COLORADO CHI (Colorado)

C. E. Davison, Sr., '28, of Sun Lakes, Arizona, on June 17, 1984.

Kenneth B. Gay, '41, of Sewickley, Pennsylvania, on April 27, 1984.

Caswell F. Spaulding, '29, of Colorado Springs, Colorado, on July 6, 1983.

Albert M. Tipple, '27, of Pueblo, Colorado, on April 18, 1984.

FLORIDA UPSILON (Florida)

Logan H. Bagby, '33, of Houston, Texas, on January 11, 1984.

Charles M. Mann, '17, of Tallahassee, Florida, on February 27, 1984.

GEORGIA BETA (Georgia)

Dr. Mercer C. Blanchard, '39, of Columbus, Georgia, on January 17, 1984.

Lee H. Hilton, '26, of Sylvania, Georgia, in June, 1984.

Robert B. Mitchell, '45, of Atlanta, Georgia, in March, 1983.

R. Redding Stevenson, '21, of Scottsdale, Arizona, on February 10, 1983.

GEORGIA PHI (Georgia Tech)

Grosvenor Swift, '35, of Stuart, Florida, on April 12, 1984.

William E. Wilson, '51, of Shreveport, Louisiana, on November 3, 1983.

IDAHO ALPHA (Idaho)

Edward A. Coon, '30, of Spokane, Washington, on June 25, 1984.

ILLINOIS BETA (Illinois)

Charles W. Dotson, '31, of Tuscola, Illinois, on February 16, 1983.

Omar W. Jones, Jr., '39, of Murphysboro, Illinois, on April 27, 1984.

William F. Skeer, Jr., '31, of Hillsborough, California, on April 16, 1984.

ILLINOIS DELTA (Milliken)

William M. Cutler, '41, of Freeport, Illinois, on April 7, 1984.

ILLINOIS EPSILON (Bradley)

Timothy C. Palmer, '87, of Oak Park, Illinois, on July 29, 1984.

INDIANA BETA (Purdue)

Charles F. McClure, '32, of Chicago, Illinois, on April 1, 1984.

IOWA BETA (Iowa)

George H. Gallup, Sr., '22, of Princeton, New Jersey, on July 27, 1984.

Karl F. Geiser, '25, of Los Angeles, California, on February 7, 1984.

Keith S. Wilcox, '37, of Charles City, Iowa, on April 12, 1984.

IOWA GAMMA (Iowa State)

Lt. Col. Francis McKay, '40, of Fircrest, Washington, on February 29, 1984.

IOWA DELTA (Drake)

Robert R. McClary, '31, of La Grange Park, Illinois, on May 7, 1984.

Ivan J. Ratcliffe, '30, of Cherokee Village, Arkansas, on June 7, 1984.

KANSAS ALPHA (Kansas)

Donald P. Ebling, '40, of Shawnee Mission, Kansas, on April 28, 1984.

Dr. Jacob E. Wyatt, '40, of Boise, Idaho, on March 9, 1984.

KANSAS BETA (Kansas State)

George Washington, '30, of Chico, California, on July 7, 1984.

KENTUCKY EPSILON (Kentucky)

Arthur Y. Martin, '35, of Orlando, Florida, on June 13, 1983.

KENTUCKY KAPPA (Centre)

Clarence L. Wood, '22, of Maysville, Kentucky, on January 26, 1983.

LOUISIANA EPSILON (Louisiana State)

S. Frank Harlow, '68, of Bossier City, Louisiana, in June, 1984.

Roger P. Swire, '37, of Baton Rouge, Louisiana, on February 9, 1984.

Richard M. Wonder, '56, of Rancho Palos Verdes, California, on May 2, 1984.

LOUISIANA TAU-UPSILON (Tulane)

Dr. C. Gordon Johnson, '29, of Pass Christian, Mississippi, on June 26, 1983.

MAINE ALPHA (Maine)

Frank E. Shaw, '24, of Bangor, Maine, on July 9, 1983.

MARYLAND BETA (Maryland)

George M. Anderson, '44, of Baltimore, Maryland, on October 28, 1983.

MASSACHUSETTS BETA UPSILON (Boston)

Harold G. Carlson, '26, of Winchester, Massachusetts, on March 15, 1984.

MASSACHUSETTS DELTA (Worcester Tech)

Westley Herman Floria, '35, of Worcester, Massachusetts, in May, 1984.

Luther B. Martin, '25, of Westfield, New Jersey, on December 20, 1983.

MASSACHUSETTS KAPPA (Massachusetts)

Douglas D. Milne, II, '39, of Carlisle, Massachusetts, on October 16, 1983.

MICHIGAN ALPHA (Adrian)

Frederick B. Fisher, '33, of Nokomis, Florida, on May 4, 1984.

MICHIGAN GAMMA (Michigan State)

Dr. Wilber Hart, '26, of Aurora, Colorado, on December 27, 1983.

MICHIGAN IOTA-BETA (Michigan)

Norman R. Tabor, '46, of Marietta, Ohio, on December 10, 1983.

Donald G. Wright, '62, of Flint, Michigan, on April 3, 1984.

MINNESOTA ALPHA (Minnesota)

John S. Gibbons, '31, of Minneapolis, Minnesota, on January 28, 1983.

Ennert C. Groth, '30, of Minneapolis, Minnesota, on July 16, 1984.

MISSISSIPPI GAMMA (Mississippi)

Bertram E. Bookout, '19, of Pensacola, Florida, on November 17, 1983.

Frederick T. Hamilton, '72, of Indianola, Mississippi, in April, 1984.

Howard D. Thames, '30, of West Point, Mississippi, on January 5, 1984.

MONTANA ALPHA (Montana State)

Verlin W. Hurd, '35, of Thompson Falls, Montana, on July 2, 1983.

Henry P. Muntzer, '19, of Butte, Montana, on April 3, 1984.

Napoleon J. Salvail, '37, of Cocoa, Florida, on May 28, 1984.

NEBRASKA LAMBDA-PI (Nebraska)

William H. Ledwich, '30, of Lincoln, Nebraska, on July 12, 1984.

NEVADA ALPHA (Nevada)

Carl S. Benedict, '52, of Reno, Nevada, on April 10, 1984.

NEW HAMPSHIRE BETA (New Hampshire)

Col. John E. Rogers (Ret.), '28, of San Jose, California, on April 7, 1984.

NEW MEXICO ALPHA (Eastern New Mexico)

C. V. "Mac" McCord, '36, of Bloomfield, New Mexico, in March, 1983.

NORTH DAKOTA BETA (North Dakota State)

Fred W. Kegel, '49, of Detroit Lake, Minnesota, on March 24, 1984.

OHIO DELTA (Ohio Wesleyan)

Rollen L. Koons, '32, of Bucyrus, Ohio, on May 5, 1984.

Dr. Harry E. Shilling, of Troy, Ohio, on December 27, 1983.

OHIO EPSILON (Cincinnati)

Theodore F. Olt, '28, of Middletown, Ohio, on May 30, 1984.

G. E. Smith, '37, of Venice, Florida, on March 2, 1984.

Clifford J. Wahl, '24, of Cincinnati, Ohio, on February 29, 1984.

OHIO THETA (Ohio State)

Arthur J. Gneuchs, '39, of Sarasota, Florida, on April 9, 1984.

OHIO LAMBDA (Kent State)

Duane O. Hendricks, '56, of Kent, Ohio, in March, 1984.

OHIO MU (Denison)

Col. Earl F. Klinck, '25, of Dallas, Texas, on August 16, 1983.

Rourk J. Mullen, '83, of Denver, Colorado, on May 12, 1984.

OHIO SIGMA (Mount Union)

Roger M. Brown, '31, of Palm Harbor, Florida, on June 6, 1983.

Murray N. Windle, '16, of Chillicothe, Missouri, on June 25, 1984.

OHIO TAU (Miami)

Joel M. Stall, '34, of Fremont, Ohio, on May 25, 1984.

OKLAHOMA KAPPA (Oklahoma)

Henry L. Braun, '32, of Kansas City, Missouri, on March 7, 1984.

OKLAHOMA MU (Oklahoma State)

Walter T. Berg, '26, of Augusta, Georgia, on March 28, 1984.

David K. Malone, '54, of Santa Ana, California, on February 29, 1984.

OREGON ALPHA (Oregon State)

Sigmund H. "Sig" Ellingson, '42, of Baker, Oregon, on May 6, 1984.

Clarence R. Ellis, '24, of Holloman AFB, New Mexico, on February 16, 1984.

Robert L. McCourt, Jr., '26, of Kihei, Hawaii, on March 20, 1983.

Floyd M. Mushrush, '22, of South Pasadena, California, on July 27, 1983.

OREGON BETA (Oregon)

Frank M. Bondurant, '36, of Santa Maria, California, on April 29, 1984.

Lester W. Cupp, '51, of Belmont, California, in April, 1984.

PENNSYLVANIA ALPHA-ZETA (Pennsylvania State)

John F. Couch, '47, of Wilmington, North Carolina, in January, 1981.

Harold L. Pickel, '44, of Abington, Pennsylvania, on September 27, 1983.

John N. Rodgers, '30, of Kensington, Maryland, on November 28, 1983.

PENNSYLVANIA GAMMA (LaFayette)

Donald L. Harper, '57, of Easton, Pennsylvania, on June 2, 1984.

PENNSYLVANIA DELTA (Gettysburg)

Captain Richard R. Bowman, '42, of New Cumberland, Pennsylvania, on February 21, 1983.

Statton L. Rice, '16, of Delmar, New York, on December 21, 1983.

Richard E. Romberger, '50, of Carlisle, Pennsylvania, on February 4, 1984.

Edward B. Utz, '31, of Hanover, Pennsylvania, on May 4, 1984.

PENNSYLVANIA SIGMA-PHI (Dickinson)

Clarence A. Cover, '26, of Wilmington, Delaware, on February 9, 1984.

PENNSYLVANIA CHI-OMICRON (Pittsburgh)

John H. Creps, '43, of Indiana, Pennsylvania, on October 9, 1983.

David T. Dolan, '54, of Cuyahoga Falls, Ohio, on March 17, 1984.

SOUTH CAROLINA DELTA (South Carolina)

John K. DeLoache, '22, of Camden, South Carolina, in July, 1984.

SOUTH DAKOTA SIGMA (South Dakota)

John Hermanson, '19, of Dell Rapids, South Dakota, on June 26, 1983.

TENNESSEE ZETA (Memphis)

Dr. Ben E. Dewbre, '52, of North Little Rock, Arkansas, on November 30, 1983.

TENNESSEE KAPPA (Tennessee)

Donald R. Dempster, '56, of Knoxville, Tennessee, on December 12, 1983.

Newton F. Hancock, '28, of Charleston, South Carolina, on July 3, 1984.

Herman L. Modlin, Jr., of Knoxville, Tennessee, on March 7, 1984.

Frank S. Neely, '11, of Fort Smith, Arkansas, on November 23, 1983.

James H. Patton, '25, of Memphis, Tennessee, on July 31, 1983.

TENNESSEE LAMBDA (Cumberland)

Dr. Ernest L. Stockton, Jr., '39, of Lebanon, Tennessee, on April 28, 1984.

Charles W. Young, '24, of Hopkinsville, Kentucky, on February 20, 1984.

TENNESSEE NU (Vanderbilt)

Dr. Robert D. Haymore, '51, of Hixson, Tennessee, on August 26, 1983.

Hardee C. Kilgore, '31, of Nashville, Tennessee, on April 6, 1984.

Donald E. O'Brien, '59, of Atlanta, Georgia, on June 20, 1984.

W. C. Sloan, '19, of Jonesboro, Arkansas, on April 4, 1984.

TENNESSEE OMEGA (University of the South)

James Graham Haile, Sr., '36, of Gainesville, Florida, on June 1, 1984.

TEXAS GAMMA (Texas-El Paso)

Edward R. Neugebauer, '47, of El Paso, Texas, on April 17, 1984.

TEXAS EPSILON (Houston)

Bobby J. Bailey, '50, of Alvin, Texas, on August 5, 1984.

UTAH UPSILON (Utah State)

William J. Townsend, '39, of San Bernardino, California, on January 6, 1984.

VIRGINIA KAPPA (William & Mary)

William W. Ringheim, '44, of Nevada, Iowa, on May 18, 1984.

VIRGINIA SIGMA (Washington & Lee)

Julian F. Broome, '32, of Jacksonville, Florida, on December 3, 1983.

VIRGINIA TAU (Richmond)

Thomas H. Pritchard, '83, of Danbury, Connecticut, on June 16, 1984.

WASHINGTON ALPHA (Washington)

William R. Davis, '24, of Great Falls, Montana, on July 4, 1984.

Baxter C. Felch, '26, of Seattle, Washington, on June 17, 1984.

WASHINGTON BETA (Washington State)

Ben A. VanDeusen, '31, of Woodburn, Oregon, on February 3, 1983.

WASHINGTON GAMMA (Puget Sound)

Delmer F. Weston, '68, of Colville, Washington, in July, 1984.

WASHINGTON CITY RHO (George Washington)

Edward J. Calhoun, '25, of Silver Spring, Maryland, on February 25, 1984.

WISCONSIN ALPHA (Wisconsin)

Stephen W. Perske, '75, of Green Bay, Wisconsin, in March, 1984.

WISCONSIN PHI (Beloit College)

Alfred A. Duteau, '17, of Lincoln, Nebraska, on March 11, 1984.

William R. Montgomery, '18, of Lynn Haven, Florida, on March 2, 1983.

WYOMING ALPHA (Wyoming)

Earl A. McKay, '23, of Cheyenne, Wyoming, on March 17, 1984.



IN MEMORIAM

Most of us, throughout our lives, seek some form of participation in the future, some contribution that will remain as a productive influence in the years to come. Most of us, if we could, would choose to have our names remembered—and to create some resource that would endure.

The history of Sigma Alpha Epsilon and The Levere Memorial Foundation are filled with contributions of this kind. These gifts "in honor of" or "in memory of" a fraternity brother, a friend, a loved one, have added immeasurably to the permanent services of The Levere Memorial Foundation by enlarging endowments for members' services such as student loans, tutorial assistance, chapter libraries and others.

The Levere Memorial Foundation invites your consideration of these opportunities for enduring gifts. Your gift will help the Foundation and the fraternity to serve those brothers now coming through our ranks. For it will make your faith and support a living part of all we will accomplish in the future. The Foundation and the fraternity are grateful for the special contributions in remembrance of ΣΑΕ brothers and friends. Contributions "in honor of" or "in memory of" can be sent to Kenneth D. Tracey, Executive Director, The Levere Memorial Foundation, P.O. Box 1856, Evanston, Illinois 60204.

Additional information on establishing endowed book funds, student loan funds, or scholarship funds can be obtained at the same address.

Contributions have recently been received in memory of:

Irwin S. Beattie by George N. Steinhauer

E. Hugh Behymer by James Alan Calderon
New York Beta Chapter
M. Kerby Saunders, II
Kenneth Weil
Philip R. Wentzel

Frank J. Zeranski, Jr.

Rober M. Brown by Muriel E. Brown
Andrew Duncan Campbell by R. J. Guyton

Mary A. Crandall by John Voenes
C. E. Davison, Sr. by George N. Steinhauer

John K. deLoach by A. Dabney Barnes
Donald P. Ebling by Frank E. Ebling
Gunnar Erickson by Donald H. Parker
Baxter C. Felch by Benjamin S. Malloy
Kenneth B. Gay by Lindley F. Bothwell
Dr. Lloyd N. Gilliland, Jr. by Jean North Gilliland

Warren Clifford Graves by B. Graves
Wilson Hanna, III by California Iota Alumni Association

Donald L. Harper by Marion W. Sanford

Dr. Robert D. Haymore by Mrs. Robert D. Haymore

Duane O. Hendricks by William B. Vonstein

Reid Hoelscher by

John Armstrong
Jeffrey Curtis
George Davie
James Fleming (Dettmen Found.)
Timothy Gillick
John Hatch
Robert Hopson
John Sams
A. C. Sorensen
R. M. Taylor
Thomas R. Will

William C. Klein by Mrs. William C. Klein

Robert R. McClary by Caroline O. McClary

Douglas D. Milne by Mrs. Douglas D. Milne

H. L. Modlin by Anne Y. Modlin

Thomas Neher by Christopher Bond

Walter D. Northfield by Benjamin S. Malloy

Richard C. Oppenlander by William E. Martin

Mrs. Richard C. Oppenlander

Joseph W. Ruttger, Sr. by Thomas W. Devine

G. Lester Goetting

Napoleon J. Salvail by Mrs. Napoleon J. Salvail

Frederic Stevens, Jr. by Teresa A. Stevens

Mrs. Charles F. Simmons by H. Earle Williams

Albert M. Tipple by George N. Steinhauer

Ben A. Van Deusen by Benjamin S. Mallory

24 Join Founder Ranks

A Founder Member is a brother who contributes or has contributed in his name \$1000 to the Foundation, which is used to enlarge endowments for members' services such as student loans, tutorial assistance, libraries, and others.

Biographies and photographs of new founder members are published as they are received in the National Office.

Emil H. Matyas

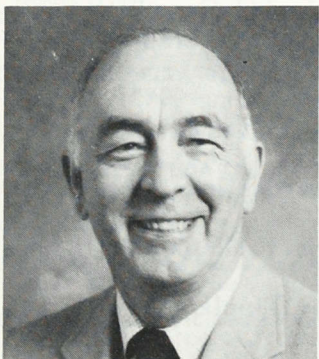
Emil H. Matyas, *University of Southern California '48 (Gamma)*, has been named Founder Member 826 of The Levere Memorial Foundation.

Matyas is chairman of Oxford Insurance Management, Indoor Advertising and Robinson-Matyas Co. He has been running his own firms for more than fifteen years following a career as vice-president of a national brokerage firm. Matyas and his wife Jane (who is Associate Food Editor for *Bon Appetit* magazine) have three children and live in Los Angeles, California.

General Bryce Poe, II

General (USAF, retired) Bryce Poe, II, *Colorado School of Mines '45 (Lambda)*, has been named Founder Member 919 of The Levere Memorial Foundation.

A highly decorated veteran who served in World War II, the Korean Conflict and Vietnam,



Emil H. Matyas

Poe retired in 1981 as a four-star Air Force General. Since that time, he has served as a consultant to industry and government. He recently served on the National Academy of Science Space Shuttle Advisory Group.

General Poe lives in Alexandria, Virginia, with his wife, Kari, and three children.

F. F. Becker, II

F. F. Becker, II, *Mississippi State '32 (Theta)*, a charter member of his chapter, was named Founder Member 869 of The Levere Memorial Foundation.

Before his retirement in 1975, Becker was Chairman of the Board of the Brookhaven Bank and Trust Co. in Brookhaven, Mississippi, after 40 years with the firm. He is a member of the Brookhaven Kiwanis Club, the Chamber of Commerce, and other local development committees.

He and his wife, Adeline, have two children and five grandchildren.

Floyd S. Leisman

Floyd S. Leisman, *Michigan State '47 (Gamma)*, was designated Founder Member 875 of The Levere Memorial Foundation.

Leisman's 25-year career with the General Motors Corporation has included the positions of senior development engineer and



General Bryce Poe, II

a position with the manufacturing engineering and development staff. A member of the Society of Automotive Engineers (another "SAE"), Leisman belongs to several other engineering societies.

Jeffrey Harold Byroads

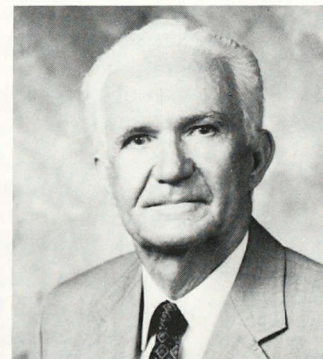
Jeffrey H. Byroads, *San Diego State '78 (California Theta)*, president of T.C.S. Insurance Services, Inc., was named Founder Member 848 of The Levere Memorial Foundation.

Byroads' insurance career has been focused mainly on commercial insurance, and he became president of the newly formed T.C.S. Insurance Services, Inc., last spring. T.C.S. Insurance is a division of T.C.S. Financial, Inc., based in San Diego. Byroads is also a four-year member of the SAE Leadership School faculty. He and his wife, Carol, live in Carlsbad, California with their son, Christopher.

William P. Lyons, Jr.

William P. Lyons, Jr., *San Diego State '79 (California Theta)*, a loss control manager for EBI Services, Inc. in San Diego, was named Founder Member 860 of The Levere Memorial Foundation.

Lyons joined EBI in 1980 after receiving a Bachelor of Science degree in health science and



F. F. Becker, II

safety, with an emphasis in occupational health, from San Diego State. He is currently working on an Associate in Risk Management (ARM) designation. At San Diego State, he was presented the True Gentleman award from the California Theta Little Sisters of Minerva in 1979.

Howard R. Born

Howard R. Born, *Oklahoma '38 (initiated into Idaho Alpha at the University of Idaho)*, was designated Founder Member 873 by The Levere Memorial Foundation.

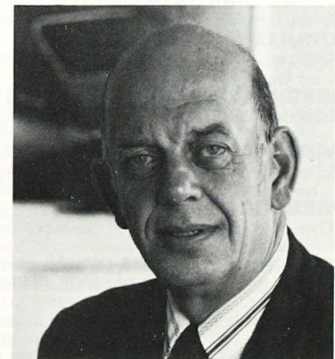
Born is a retired director of Tennessee Gas Transmissions Co., a division of Tenneco, Inc. He was with the firm from 1948-1975. He is a member of the American Association of Petroleum Geologists, the Texas Archeological Society, and other professional and charitable organizations.

He and his wife, Ruth, have one daughter and live in Houston, Texas.

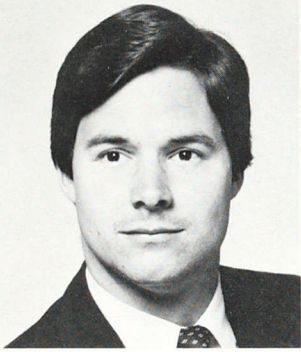
Morgan Zook

Morgan Zook, *Tennessee '50 (Kappa)*, Chairman of the Board and Chief Executive Officer of Sunbank of Palm Beach County, Florida, was designated Founder Member 874 of The Levere Memorial Foundation.

Zook is involved with numerous civic and charitable organi-



Floyd S. Leisman



Jeffrey Harold Byroads

zations in Palm Beach County, which include the Bethesda Hospital Association, the DelRay Beach Downtown Development Authority and the Kiwanis Club. He is a member of the Phi Kappa Phi scholastic fraternity and Beta Gamma Sigma, a business fraternity.

He lives in Gulf Stream, Florida, with his wife, Kathryn. They have three children and one grandchild.

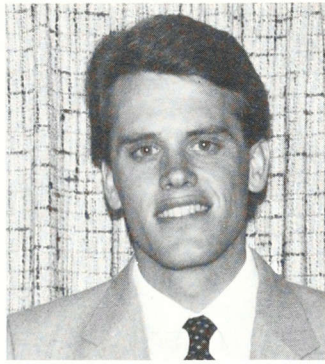
Michael Z. Brenan

Michael Zinn Brenan, *Miami '59 (Florida Alpha)*, a retirement plan coordinator with Dean Witter Reynolds Inc. in Coral Gables, Florida, was named Founder Member 911 of The Levere Memorial Foundation.

A resident of South Florida for many years, Brenan graduated from the University of Miami with majors in international business, finance and economics. After graduation from the University of Miami, he was affiliated with the Minnesota Twins through the minor leagues. He is a member of the New York Stock Exchange Hearing Board.

John T. Edwards

John T. Edwards, *Oklahoma '47 (Kappa)*, a senior partner



William P. Lyons, Jr.

with Monnet, Hayes, Bullis, Thompson & Edwards in Oklahoma City, was named Founder Member 907 of The Levere Memorial Foundation.

Edwards has been with the firm for 23 years. He is a member of the American Bar Association, bar associations on the state and county level, and is a fellow of the American College of Trial Lawyers. He is a deacon and elder of the Westminster Presbyterian Church in Oklahoma City, where he lives with his wife, Janet, and children, Shannon and Holly.

Murray B. Nelson

Murray B. Nelson, *Drake '35 (Iowa Delta)*, was named Founder Member 881 of The Levere Memorial Foundation.

He is a retired general counsel and corporate secretary of the Maytag Company of Newton, Iowa. He was with the firm for 36 years, and in that time managed to remain heavily involved with the community of Newton. He won the Distinguished Service Award and the One in 100 Award from Drake University. He has been listed in *Who's Who in America* for almost 10 years. He and his wife, Jean, live in Newton.



Howard R. Born

Robert Wiegand

Robert Wiegand, *Tulane '19 (Louisiana Tau-Upsilon)*, was posthumously named Founder Member 887 of The Levere Memorial Foundation.

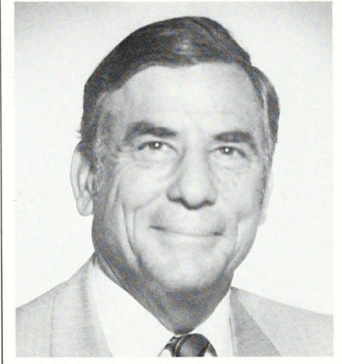
Wiegand had several careers; in wholesale groceries, motion picture advertising and photo-finishing. Later on, he became involved in real estate investments in New Orleans. He served in World War I, and was instrumental in establishing the Louisiana Epsilon chapter at Louisiana State University in Baton Rouge. He was one of the original members of the Louisiana Tau-Upsilon House Corporation at Tulane.

Wiegand and his wife, Glendora, had two children, nine grandchildren and 12 great-grandchildren. He died on February 1, 1984.

Robert N. Wiegand

Robert N. Wiegand, *Louisiana State '43 (Epsilon)*, a realtor in Bridge City, Louisiana, was named Founder Member 888 of The Levere Memorial Foundation.

Wiegand has been in the real estate business for 30 years, in which time he has been a subdivision developer and past presi-



Morgan Zook

dent of the Jefferson Board of Realtors. He is a member of the Westwego, Louisiana, Rotary Club, and founder and director of St. George's Episcopal School. He is also a vestryman at St. Andrew's and St. George's Episcopal Churches in New Orleans.

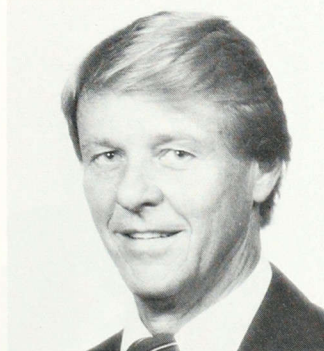
He and his wife, Patricia, have six children and seven grandchildren.

Robert Wiegand, II

Robert Wiegand, II, *Tulane '70 (Louisiana Tau-Upsilon)*, a partner with the firm of O'Connor & Hannan, was designated Founder Member 889 of The Levere Memorial Foundation.

Wiegand was Phi Beta Kappa at Tulane, as well as belonging to several law fraternities. He is licensed to practice law in both Louisiana and Colorado. He is a member of the Parents Advisory Committee of the Greenwood Elementary School in Englewood, Colorado, and other civic and neighborhood organizations.

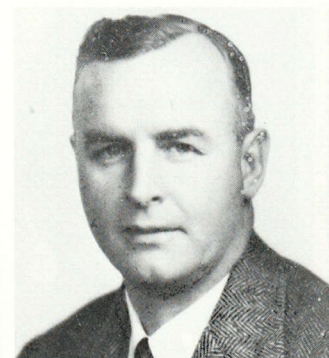
He is a member of the ΣAE Permanent Committee on Chapter Housing, Province Eta Recorder, legal counsel to the Colorado Chi House Corporation at the University of Colorado,



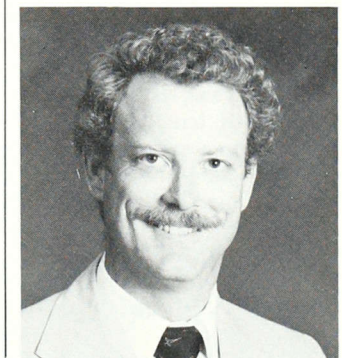
Michael Z. Brenan



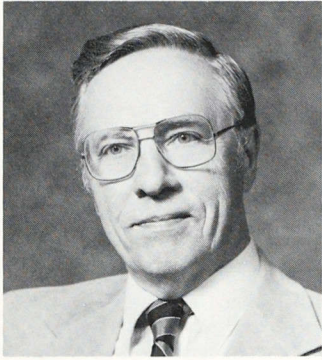
Robert Wiegand



Robert N. Wiegand



Robert Wiegand, II



Murray B. Nelson

and a past member of the board of directors of the Louisiana Tau-Upsilon House Corporation.

He and his wife, Pamela, live in Greenwood Hills, Colorado with their three children.

Frank Alan Burtner

Frank Alan Burtner, *Texas '40* (initiated by *South Carolina Nu* at *Clemson* in 1970), was named Founder Member 585 by The Levere Memorial Foundation.

Burtner is a professor of sociology as well as Director of Fraternity Affairs and Director of Pre-professional Health Advisement at Clemson University in South Carolina. He is a member of several honorary fraternities that include the Order of Omega and the Blue Key National Honor Fraternity.

H. Fraser Mills

H. Fraser Mills, *Yale '64* (initiated by *New Jersey Alpha* at *Princeton* in 1983), an architect and property developer, was designated Founder Member 863 by The Levere Memorial Foundation.

A principal with Mancini-Mills, Inc., of San Francisco, Mills is a member of the American Institute of Architects, the San Francisco Commercial Club, the Commonwealth Club of



Frank Alan Burtner

California and the Yale Club of San Francisco. He received his Master of Architecture from Stanford University in 1971, and lives in San Francisco with his wife, Elizabeth.

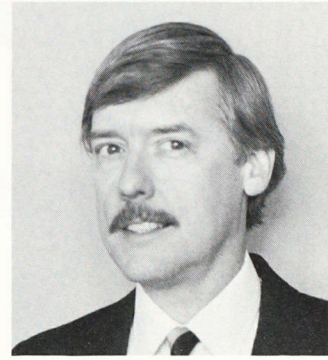
John A. DeQuattro

John A. DeQuattro, *Boston University '64* (*Massachusetts Beta-Upsilon*), president of J. D. Real Estate Co., was named Founder Member 770 of The Levere Memorial Foundation.

DeQuattro is president of the Manchester, Connecticut Scholarship Foundation and a trustee of the Manchester Memorial Hospital. He is a past president of the Manchester Chamber of Commerce, the United Way of Manchester, the Kiwanis Club and the Heart Fund of Vernon, Connecticut. He is active with the Republican party in Manchester, and is currently a member of the Town Manchester Historic Commission. He lives in Manchester with his wife, Valerie, and three children.

George B. Howell

George B. Howell, *Cornell '42* (*New York Alpha*), president and chief executive officer of the Wurlitzer Company, was named Founder Member 883 of The Levere Memorial Foundation.



H. Fraser Mills

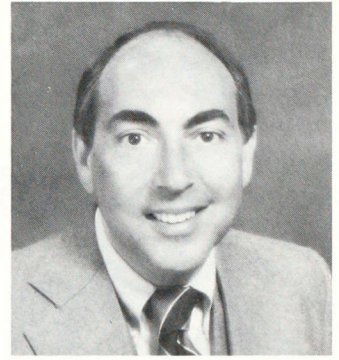
Howell has had a diverse career in industry, beginning with General Electric in 1946, and spanning the next few decades directing the operations of manufacturing and development firms. His tenure at Wurlitzer began in 1982 after leaving the International Minerals and Chemicals Corporation. Howell is listed in the 43rd edition of *Who's Who in America*.

He lives with his family in Oak Brook, Illinois.

Alton E. Allen

Alton E. Allen, *Washington '21* (*Alpha*), retired vice-president and area supervisor of the Security Pacific National Bank in Los Angeles, was designated Founder Member 884 of The Levere Memorial Foundation.

Following his retirement from Security Pacific, he served eight years as a member of the Orange County, California, Board of Supervisors. He was appointed by then Governor Ronald Reagan to serve on the California Water Quality Control Board for four years. He was president of the Los Angeles Alumni Association of SAE in 1932 and was active in organizing the 1932 National Convention held that year in Los



John A. DeQuattro

Angeles. Allen was past president of the Rotary Club of Huntington Park, California, and the Huntington Park Chamber of Commerce.

G. Robert Hamrdla

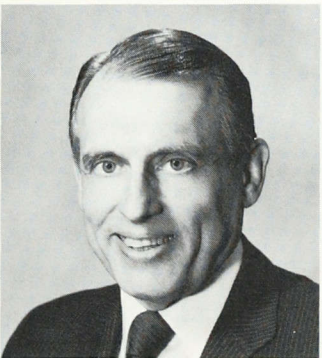
G. Robert "Bob" Hamrdla, *Stanford '60* (*California Alpha*), was named Founder Member 744 of The Levere Memorial Foundation. He has served the Foundation as its educational advisor since 1971.

Professionally, Hamrdla is assistant to the president of Stanford University. His teaching career has taken him to Europe where he participated in Stanford University's overseas study programs. He has served on the faculty of the SAE Leadership School since 1971, the same year he became the national educational advisor to Sigma Alpha Epsilon and The Levere Memorial Foundation.

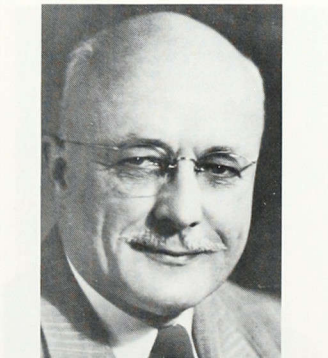
William S. Moyer

William S. Moyer, *Bucknell '57* (*Pennsylvania Zeta*), an accountant with Esso Eastern, Inc., was named Founder Member 882 of The Levere Memorial Foundation.

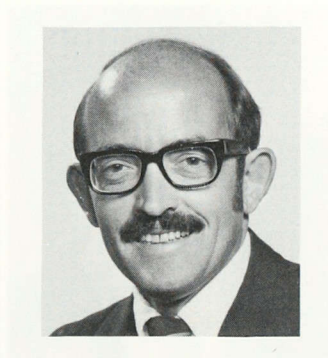
In addition to his 15 years with Exxon Corporation affiliates such as Esso Eastern, Moyer has



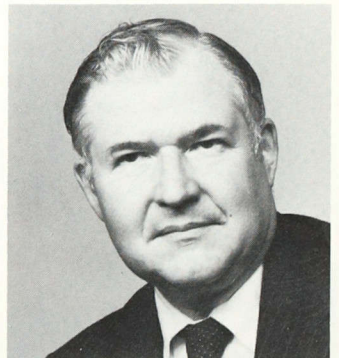
George B. Howell



Alton E. Allen



G. Robert Hamrdla



William S. Moyer



Paul H. Madsen

worked in affiliated companies all over Southeast Asia. He was named an Outstanding Young Man of America in 1970. His civic and charitable work includes the treasurership of Windwood Presbyterian Church in Houston, Texas, where he lives with his wife, Joan, and children, Nancy and John.

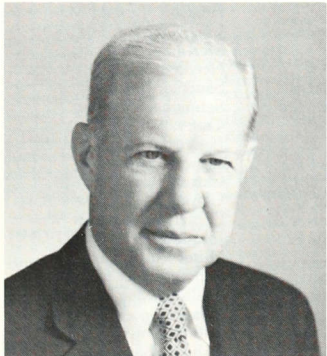
His interests range from membership on the Bucknell University College of Management Advisory Council to the Lone Star Region of the National Model Railroad Association.

Paul H. Madsen

Paul H. Madsen, *North Dakota '67 (Alpha)*, was named Founder Member 862 of The Levere Memorial Foundation.

Madsen recently received his law degree from William Mitchell college to complement his own certified public accounting practice in Crystal, Minnesota. He is a member of the American Institute of Certified Public Accountants, the Minnesota Society of CPAs, the National Society of Public Accountants, and other professional organizations. He was recently admitted to the Minnesota State Bar Association.

He and his wife, Karen, live in



John W. Swinford



Marshall D. Payn

Crystal with their son, Samuel.

Max A. Mitchell

Max A. Mitchell, *Oklahoma State '35 (Mu)*, was named Founder Member 895 of The Levere Memorial Foundation.

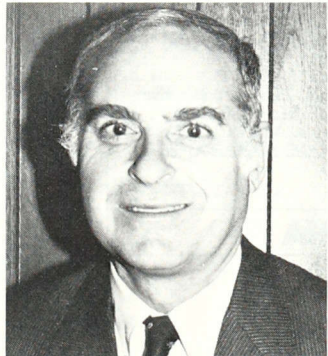
For 40 years, Mitchell was on the faculty of Oklahoma State University, where he taught music and served as head of the music department and director of the university's allied arts program. He was awarded the distinguished Service Award of the O.S.U. College of Arts and Sciences. Mitchell received a Master of Music degree from the University of Michigan, and a Doctor of Education degree from Columbia University.

He and his wife, Susan, have three children and four grandchildren.

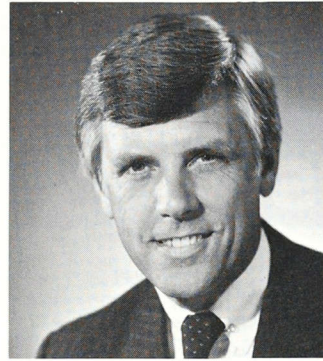
John W. Swinford

John W. Swinford, *Oklahoma '30 (Kappa)*, a counsel and former partner to the law firm of Crowe & Dunlevy, was named Founder Member 906 of The Levere Memorial Foundation.

Swinford joined Crowe & Dunlevy in 1946 and stayed active with the firm until 1978. He and his wife, Lois, have two sons,



Philip N. Johnson



Bruce L. Dahltorp

William and John Jr.

Philip Nordgren Johnson

Philip Nordgren Johnson, *Drake '58 (Iowa Delta)*, owner of Foster and Son Drug Store in Princeville, Illinois, was named Founder Member 753 of The Levere Memorial Foundation.

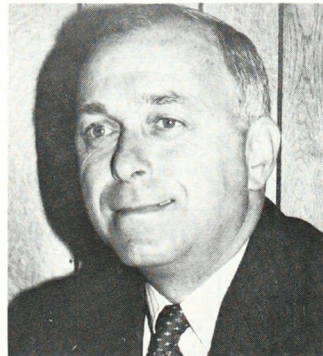
Johnson is a member of the Masonic Lodge, Scottish Rite, Mohammed Shrine Temple, the Lions Club, Jaycees and Princeville Methodist Church. He was recently named the Jaycee's Man of the Year.

He and his wife, Sayra, have three children; Justin, who has attended the ΣAE Leadership School twice, and daughters Whitney and Adrienne.

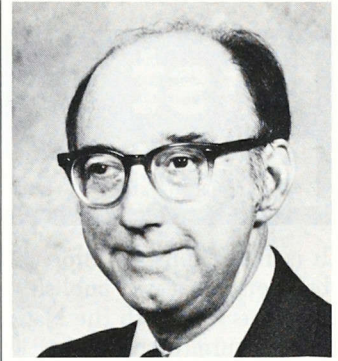
Peter J. Johnson

Peter J. Johnson, *Drake '56 (Iowa Delta)*, owner of Johnson's Drug Store in Wyoming, Illinois, was named Founder Member 754 of The Levere Memorial Foundation.

He is a member of the Wyoming Chamber of Commerce, the Wyoming Lions Club, the American Legion Post 91 and other civic organizations. He has run his store in Wyoming for 25



Peter J. Johnson



Max A. Mitchell

years.

He and his wife, Carol, have two daughters, Jennifer and Ingrid.



Due to editorial error in the Summer issue, the following two Founder Members were published, but identified with the wrong photographs. We are publishing their biographies with the correct photographs to avoid confusion.

Marshall D. Payn

Marshall D. Payn, *Massachusetts Institute of Technology '56 (Iota-Tau)*, owner of the Platt Colleges, was designated Founder Member 782 of The Levere Memorial Foundation.

Payn received his Bachelor of Science degree from MIT in economics and mechanical engineering. He now runs a number of private vocational schools across the country.

Bruce L. Dahltorp

Bruce L. Dahltorp, *University of Illinois '61 (Beta)*, president and chief operating officer of the Gainer Corporation, was named Founder Member 813 of The Levere Memorial Foundation.

Dahltorp is the past president of Central National Bank and past executive vice-president of LaSalle National Bank. He is a member of the Economics Club of Chicago and the Metropolitan Club of Chicago. From 1980 to 1981, he served on the executive committee of the Bankers Club of Chicago.

He and his wife, Sally, have two sons.

Lost Brothers

It is in our constant effort to locate lost brothers, that we publish this list of members for which the National Office has no current address, or who may be deceased.

We need your help in this effort to maintain the integrity of our membership records and to make it possible for us to provide our alumni organizations and chapters with as current a listing of members as possible.

If you know anything about these brothers, help us get them back on the alumni listings by writing to: Sigma Alpha Epsilon, Membership Records, P.O. Box 1856, Evanston, Illinois 60204.

Regular readers of *The Record* will notice that this is the second time we have published lost brothers for the Pennsylvania Alpha-Zeta chapter. Last issue, because of computer error, brothers listed for this chapter were actually from Pennsylvania Zeta at Bucknell University. Here is the correct listing.

PENNSYLVANIA ALPHA-ZETA

Pennsylvania State University

1900-1919

Langstaff, John C.
Smith, Richard M.
Adams, Earl E.
Smith George T.
Evans, Leigh R.
Miller, David H.
Allen, William L.
Pidgeon, Grover C.
Ross, Malcolm D.
Bubb, Harry H.
Knapp, Thomas A.
Jacobs, Hal E.

Newton, Nelson A.
Rittenhouse, Karl D.
Rinkenbach, Edward L.
Sprague, Richard W.
Berkley, Howard L.
Pyle, Robert C.
McConnell, Jay D.
Longenecker, John G.
Wilkins, Warren S.
Lund, Carl J.
Sieber, Earl H.

1920-1929

Stanley Joseph
Rutner, F. Y.
Shepherd, George R.
Amend, J. Gordon
Fike, George P.
Blakeslee, Austin
Rolston, Ernest H.
Thomas, Albert E.
Price, Alfred A.
Underwood, Edwin R.
McClune, Theodore C.
Adams, Ralph H.

Geissinger, William J.
Housman, Walter W.
Kile, Charles W.
Howard, George V.
Holliday, James W.
Martin, William H.
Newburn, Stephen H.
Newkirk, Jephtha
Ruegenberg, John M.
Martin, Erle
Rankin, Roy S.

1930-1939

Owens, C. Kingsley
Seltzer, Jack T.
Young, Milton C.

Reeser, Charles E.
Little, George A.
Martin, Thomas B.

Anderson, Leroy A.
Munch, Edward B.
Patterson, William A.
Stevens, Charles H.
Crawford, William L.
Hahn, Elmer
Haman, John K.
McCleary, Elmer T.
Keiser, Charles B.
Long, Edwin G.
Miller, Donald K.
Wallace, William L.
Wilson, Charles R.

1940-1949

Bane, Jack M.
Casselberry, Robert L.
Porter, Richard A.
Thompson, Wakele
White, Henry C.
Beardsley, Robert T.
Brookes, Robert D.
Jennings, Herbert C.
Kratzer, Donald A.
Dibeler, John B.

1950-1959

Christmas, James M.
Laing, Robert
Powell, Charles R.
Avery, George F.
Criswell, Harry W.
Williams, T. R.
Cummings, John T.
Foster, Dudley J.
Browne, Joseph E.
Graef, Walter J.
Smith, Robert J.
Caruthers, Robert H.
Greenawalt, Robert O.
Howe, Courtney E.
Kohn, Edwin R.
Long, Esmond R.
Souleret, William C.
Thompson, Harold J.

1960-1969

Beggs, James D.
Ehmann, John C.
McCreary, Charles C.
Painter, William E.
Davies, Donald V.
Desmond, Cornelius
Cootes, Kent L.
Fisher, Douglas B.
Gander, John E.
Kyle, Thomas N.
Gates, Jonathan H.
Kolody, Daniel I.
Polishook, Robert D.
Sands, Robert G.
Seifert, Edwin A.
Sepp, John F.
Doll, William E.
Matthews, Robert B.
McCausland, Glenn
Porter, Allen G.

1970-1981

Bried, William Paul
McCallum, William T.
Quereau, James V.
Schmidt, Stephen A.
Singer, Timothy V.
Bond, Zachary O.
Oblender, Thomas E.
Hanna, Joseph K.
Martin, John R.
McLanahan, Bruce Z.
Rozelle, Douglas D.
Standish David C.
Reisner, Gary C.

Shina, Thomas W.
Greenwood, John K.
Wiggins, Walter S.
Adams, Lee F.
Brown, Thomas W.
Luckenbill, F. G.
Merriman, George W.
Miller, Richard T.
Peck, James N.
Benzon, William
Potter, William N.
Scott, Walter E.

Lambert, J. David
Nelson, William M.
Wilson, Robert D.
Leonard, Charles T.
Lose, Richard B.
Major, George E.
Sumner, Joseph R.
Meury, Richard A.
Hutchings, James R.
Semple, J. Brooks

VanHorn, James H.
Harting, Daniel A.
Wismer, William B.
Browne, Edward J.
Conaway, Charles F.
Cox, Henry W.
Culbertson, James F.
Hedge, David R.
Remy, Gilbert W.
Cooper, Richard A.
Edwards, Leroy E.
Frederick, Theodore C.
Henrie, Edwin J.
Kelly, William A.
Koch, George W.
Baker, Vaughn A.
Stopper, James P.

Wright, Laurence C.
Ringer, John B.
Wallace, Stephen M.
deVigne, Lloyd W.
McFadden, William A.
Sampson, Robert
Hayes, Gary P.
McCorkle, David D.
Penfold, Robert R.
Craven, Charles W.
Mason, David V.
Wyckoff, John
Adams, Charles A.
Bechdel, Leslie Wayne
Guida, Richard L.
Jones, William P.
Purdy, Frederick W.
Swigler, David W.
Whittle, Wilson J.

Russell, Richard A.
Zimmerman, Thomas Ed
Derfler, James T.
Kule, Bernard J.
Novello, Joseph L.
Viechnicki, Joseph M.
Foley, Edward M.
Loy, Michael D.
Ruff, Thomas Brenneman
Schaefer, Kenneth C.
Lucas, Vincent Charles
Meyer, Stephen Albert

Choisman, Robert J.
Vanorsdel, Thomas C.
Duncan, Clifford W.
McLernon, John M.
Mercer, Ira G.
Ross, Robert B.
Sykes, Cyril P.

1930-1939

Dyer, James E.
McDonald, William Zinn
Newman, George B.
Webb, Ezra S.
Brastad, John R.
Knight, George D.
Knightsen, Jack W.
Lawson, James R.
MacCloskey, Robert W.
Taylor, Bert R.
Watkins, Harlan B.
Carpenter, Fred L.
Leggett, William G.
Carlson, Charles W.

1940-1949

Gales, Lawrence M.
Shaw, Robert K.
Dow, Kenneth W.
McCallister, Robert D.
Naylor, William E.
DeKoning, Edwin W.
Duffy, John W.
Moyer, Leonard R.
Rankin, Stuart R.
Wherland, William V.
Harvey, Eugene G.
Lay, Stuart R.
Marshall, Thomas G.
Dascenzo, Robert W.
McCluskey, William O.
Smith, Kenneth W.

1950-1959

Johnson, Malcolm A.
McMicken, Craig W.
Orner, William J.
Templer, James M.
Clarno, Raymond E.
Dowsett, James A.
Martin, Robert E.
McCallum, Donald W.
Simon, Louis J.
Beck, Charles G.
Landes, Donald P.
Milton, Victor H.
Nelson, Robert Carl
Rennewitz, Carl H.
Trask, Lowell V.
Carter, Donald W.
Fehly, Robert E.
Platenberg, Robert I.
Ray, Howard C.
Squire, William W.
Webber, Dale T.
Howe, Charles H.
Goodheart, William B.

1960-1969

Alvey, Franklin A.
Cobb, Floyd A.
Davidson, William A.
Fenno, Garry W.
Grimm, Charles B.
Grice, Lawrence T.
Stinnette, James E.
Ward, Jan L.
McDermont, Av
Morland, Arthur L.
Riley, James A.
Stoner, Thomas R.
Birrer, Calvin W.
Farmer, Michael A.
Kauffman, Darrel L.
Perkins, Ronald L.
Schmokol, Charles B.
Thomas, Dennis B.
Buckley, Thomas L.
Fergusson, Robert
Gardiner, Jeffrey W.
Ginther, Robert E.
Harter, Leland G.
Hay, Francis A.
Hay, James R.
Judson, Robert C.

Goldrainer, James C.
McPherrin, Perry O.
McCart, Ray
Peterson, Paul B.
Sutherland, Edison W.
Tibbetts, Elmo R.
Wiley, Hugh D.

Hedgpath, Joel
Rowan, James D.
Fuller, Leonard F.
Mitchell, William M.
Jensen, Raymond H.
Carlson, John R.
Coe, George R.
Martin, Jack
McGreer, William T.
Morrison, Edward A.
Thompson, Darrow
Jorgensen, Lloyd W.
McCalley, Roderick G.
Schultz, Robert D.

Walker, Robert D.
Wells, Robert E.
Chrisman, Robert J.
Hobson, Donald K.
Wilson, Harvey E.
Gallagher, Alcon E.
Hobart, Arthur L.
Kaye, Leo C.
Swenson, Don L.
Acheson, Keith A.
Crandall, Clifford E.
Francis, George R.
Johnson, Marvin O.
Pettit, William R.
Wilson, Philip C.

Harmeson, Dean F.
Lattie, James E.
Haley, Cecil V.
Mack, Charles B.
Piercy Harold D.
Rigg, Don A.
Greenly, Walter C.
Humphrey, Harlow B.
Hunt, Thomas L.
Johnson, Paul H.
Price, Ronald K.
Zaniker, Donald J.
Langton, Robert E.
McBride, Gerald T.
Badger, Larry L.
Campbell, Robert B.
Erickson, James P.
Gibbs, Phillip L.
Hull, Gordon L.
Maylie, John C.
Pindell, William J.
Widness, Roger W.

Kjos, John W.
McKennon, Colan M.
Olmsted, Gerald W.
Conklin, Kenneth L.
Grimm, Lawrence M.
Hoatson, Ronald M.
Jones, Nathan H.
McKillop, James R.
Needham, Richard L.
Sandors, Jon B.
Schmokol, Norman A.
Trefry, Willard H.
Bengtson, Jon N.
Brown, Irvin W.
Carter, Ronald R.
Clark, William D.
Cleveland, Andrew W.
Johnson, Bruce C.
Ollsen, John D.
Schroeder, Duane A.
Walton, Marc M.
deJager, Joseph W.
Albin, Anthony C.
Ash, Richard W.
Charlton, Donald P.
Claflin, Peter E.

OREGON ALPHA

University of Oregon

1900-1929

Craig, Guy G.
Howey, Leland B.
Whitney, Edwin L.

Price, John Q.
Price, Jack
Vangundia, Gordon K.

Franzen, Paul E.
Hogan, Robert S.
Landers, Dennis W.
Paulus, David J.
Samsam, Laheen A.
Shaw, Ray W.
Leland, Charles R.
Ozyegin, Husnu M.
Scott, Richard F.
Tollefson, Wayne D.
Riley, Stephen E.
Tri, Terry B.
Barkhurst, Ralph C.

Barnes, Larry Duaine
Brown, Tom Christia
Carlson, Robert Bruce
Casciato, Lin Michael
Ebell, Cecil Walter
Hill, Bernard W.
Howard, John R.
Lewis, Jess T.
McAlister, Jeffrey C.
McKennett, Michael J.
Powell, James Ray
Welch, Donald B.

1970-1983

Barron, Lonnie Gene
Carroll, Gary M.
Fletcher, Ronald Robert
Martin, James Ferrel
Oliver, Gregg P.
Sammons, C. Patrick
Stewart, Michael A.
Barton, Gary Lee
Cone, Richard Bruce
Holloway, Stephen C.
Risley, Charles W.
Seim, William D.
Smith, Loren Woodro
Antone, William M.
Barton, Ronald Dean
Galentine, Dexter Mark
McMurray, Michael R.
Crone, Stephen R.
Long, Charles R.
Price, Robert H.
Sage, Charles S.
Ebert, John W.
Galentine, Brian G.
Hickey, Thomas D.
Leston, James C.
Tweedy, Robert G.

Williams, Richard B.
Martin, David R.
Nelson, Thomas L.
Oiler, Jimmie D.
Pound, William M.
Sinkey, Mark A.
Walker, Fredrick M.
Buckingham, George T.
Hickey, Jeffrey F.
Verger, James L.
Hoover, Richard A.
Buckingham, Thomas W.
Johnson, Brad R.
McIntyre, Kelly Eugene
Smith, Wendel W.
Bartle, Thomas Richard
O'Neal, Trent Stevens
Spelman, Thomas Gordon
Wamble, Kelly Scott
Brenn, Stephen Harry
Meyers, Michael Stephe
Propp, William Mark
Sullivan, Michael Duncan
Afang, Danford Scott
McNair, Robert Lee
Bushey, Jacob Michael

Shepherd, James C.
Enloe, Peyton A.
Hall, David G.

1950-1959

Copeland, Malcolm G.
Harkins, Jerry
Moddlemog, James D.
Smith, Adrian R.
Bowers, Shannon E.
Clemons, Leon H.
Jones, Sam L.
Kliwer, John H.
Bell, Frederick F.
Bowen, Kenneth R.
Duggan, Mell L.
Kitchen, Bryson J.
Millard, John L.
Schnorf, Ernst H.
Barron, Dan D.

Menuet, Richard A.
Purves, Joseph E.
Wheat, Achilles V.

Carter, George D.
Fulton, Robert D.
Glenn, Jack W.
Sommers, David H.
Stewart, William C.
Breidenthal, Richard A.
Stith, Edward E.
Cooper, Robert A.
Eichhorn, Joe G.
Johnson, Lewis C.
Travers, John L.
Aldrich, James H.
Nelson, George M.
Allison, Robert J.
Sandford, Virgil D.

1960-1969

Kennedy, John C.
Robberman, Charles H.
Westfall, Robert E.
Caster, Pvt. Ralph L.
Hercules, Larry K.
Snyder, Brewster B.
Wilcox, Michael W.
Dotson, William R.
Peterson, Reed P.
Warner, James D.
Wilson, Donald D.
Zinn, Werner G.
Davis, Gregory S.
Hites, Michael M.
Bicknell, Dennis L.
Dedo, Douglas D.
McArthur, William P.
Petty, Douglas G.

Collins, Harry E.
Hamilton, George K.
Kopp, George C.
Shrader, Donald A.
Hamilton, William C.
Rapp, Terry D.
Rosser, Robert L.
Walstad, Joe G.
Walters, Bill L.
Bruce, Lonny R.
Lancaster, Ray B.
Nail, Michael E.
Turley, Jerry J.
Warner, Garrett R.
White, Roger W.
Craig, Kyle T.
Kane, Neil A.
Shrader, Robert M.

1970-1982

Geissal, John A.
Steiner, Edward T.
Epperson, Richard H.
Gerkin, Lee M.
Hines, Robert B.
Jones, Warren G.
Kitzsteiner, Robert J.
McFarland, Henry J.
Jacobson, Mark V.
Risley, Allyn W.
Brimacombe, William J.
Cofoid, Charles T.
Diebolt, Timothy P.
Gorup, Paul N.
McDowell, Thomas J.
Nelson, Robert S.
Oakson, Thomas E.
Rueschoff, David A.
Schutz, Ralph A.
Bayles, John V.
Hewitt, Richard W.
Reineke, Lawrence J.
Cory, Mark K.
Hobbs, Larry B.
Llewellyn, Theodore C.

Nichols, Joseph L.
Roberts, Steven D.
Williams, John A.
Alexander, David R.
Gorsky, Michael M.
O'Brien, Walter R.
Schroeder, Douglas A.
Hendricks, Timothy W.
Moore, Christopher R.
Sanderson, James C.
Silks, Mark Andrew
White, Robert A.
Holm, Steven C.
Jones, Stephen Harris
Kramer, Richard K.
Walton, Robert J.
House, Robert Leonard
Uhland, Robert Allen
Welch, John Martin
Bunselmeyer, Karl W.
Parker, John J.
Finkle, Greg Robert
Hutchings, Joel Vincent
Nelson, Eric Joseph
Schermacher, Ronald E.

KANSAS ALPHA

University of Kansas

1900-1919

Mong, Clemons R.
Kincaid, Roy C.
Mossbacher, George J.
Seewir, De Weese C.
Miles, Cuthbert O.
Koogler, John G.
Loucks, Frank W.

Welsh, E. C.
Hodgkins, William T.
Barnes, Claude R.
Geiger, Charles T.
Johnson, Myron L.
Niles, John S.
Puckett, Louis H.

1920-1929

Davis, William R.
Gray, Lawrence C.
Howden, Rollo R.
Acker, Carl I.
Edwards, Joseph R.
Murphy, Frederick G.
Barnett, Walter J.
Huoni, John S.
Ball, Ralph G.
Bennet, Durward A.
Blakemore, Virgil R.
Jester, Charles E.
Smith, Marsh E.
Allvine, Earl F.
Graham, Merwin B.

Miller, Lester H.
Riley, Glen E.
Robson, Robert C.
Barnes, Jack W.
Black, Joseph V.
Jeffery, Roland T.
Pickering, Ben C.
O'Byrne, James M.
Boggs, Wilbert B.
Larkin, James Marian
Quinlan, William J.
Kirk, John M.
Lawrenson, Raymond E.
Pickering, Ben O.

1930-1939

Henry, Maxwell
O'Dell, Edward L.
Scott, Robert D.
Scott, Charles
Allen, Hollie B.
Jones, Howard F.
McKone, Maurice W.
Reynolds, Gilmer L.

Voss, Arthur W.
Cornwell, Lowell W.
Herren, Richard L.
Hinds, William B.
Brenneisen, Leo
Little, Robert E.
Sullivan, Nelson H.
Sundgren, Vincel

1940-1949

Briggs, Godfrey
Harris, William T.
Ziegelmeier, John J.
Kelchner, James W.
Shaw, William C.
Walton, Jack L.
Williamson, William P.
Hilton, Willard H.

Jennings, Lawrence E.
Martin, William R.
Nelson, Robert A.
Benedict, Larry Lee
Billingsley, Patrick P.
Brent, Page
Briley, James E.
Morrissey, James P.

MOVING?

Be sure to take THE RECORD along! Attach your current mailing label in the space provided, fill in your new address and return this form to the National Office.

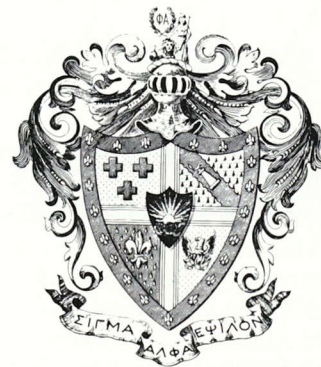
ATTACH LABEL HERE

NEW ADDRESS:

NAME _____
ADDRESS _____
CITY/STATE/ZIP _____

CLIP AND MAIL TO:

SIGMA ALPHA EPSILON
P.O. BOX 1856
EVANSTON, IL 60204



Keep in Touch

It is an ongoing effort to keep track of more than 125,000 members nationwide, but the National Office is keeping up, thanks to help from alumni who notify the office if they are moving, or if they know of someone who is. Now, the computer services department is publishing a brochure on what kind of computer services the National Office can provide chapters and alumni associations in the way of mailing labels and directories. If you would like one of these brochures, please write the National Office at P.O. Box 1856, Evanston, Illinois 60204.

★ THE RECORD ★ SPORTSPAGE

When you turn on your TV this weekend, look for these brothers for whom the intra-mural athletic program on campus just wasn't enough. It's an impressive list!

Compiled by Jack Rushing

Pro Football

John Mecom, Oklahoma '61 (Kappa), owner, New Orleans Saints
Louis Nippert, Cincinnati '28 (Ohio Epsilon), co-owner, Cincinnati Bengals
Rankin Smith, Jr., Georgia '70 (Beta), president, Atlanta Falcons
Don Grammer, Cincinnati '53 (Ohio Epsilon), scout, New York Jets
Ralph Kohl, Michigan '49 (Iota-Beta), scout, Minnesota Vikings
Kent McCloughan, Nebraska '65 (Lambda-Pi), player personnel, Los Angeles Raiders
Jim Parmer, Oklahoma State '48 (Mu), scout, Chicago Bears

The following men are assistant coaches for NFL clubs:

Marvin Bass, William & Mary '43 (Virginia Kappa), Denver Broncos
Pete Carroll, Pacific '73 (California Rho), Buffalo Bills
Chuck Clausen, New Mexico '63

(Tau), Philadelphia Eagles
Jim Dooley, Miami '52 (Florida Alpha), Chicago Bears
Andy Everest, Texas-El Paso '50 (Gamma), New Orleans Saints
Pat Hodgson, Georgia '66 (Beta), New York Giants
Jed Hughes, Gettysburg '70 (Pennsylvania Gamma), Pittsburgh Steelers
Tom Moore, Iowa '61 (Beta), Pittsburgh Steelers
Fran Polsfoot, Washington State '50 (Beta), Denver Broncos
Dave Redding, Nebraska '75 (Lambda-Pi), Cleveland Browns
LaVern Torgeson, Washington State '51 (Beta), Washington Redskins

Joe Devlin, Iowa '76 (Beta), was recently named to the Buffalo Bills Silver Anniversary team. He's in his ninth season at offensive tackle for the club. Defensive end **Casey Merrill**, California-Davis '79 (Beta), is with the New York Giants again. **Paul McFad-**

den, Youngstown State '84, (Ohio Alpha), is the Philadelphia Eagles' new place-kicker this season. Quarterback **Steve Fuller**, Clemson '79 (South Carolina Nu), began the season on the Chicago Bears injured reserve list. Saskatchewan defensive end **Rick Mohr**, California-Davis (Beta), was selected last season to the First Team of the All-Canadian Football League team. Defensive lineman **Greg Marshall**, Oregon State '78 (Alpha), is an all-star player for the Ottawa Rough Riders. Last season he received the Shenley Award as the outstanding defensive player in the CFL while defensive tackle **Al Johns**, Pacific '79 (California Rho), is in his fifth year with the Saskatchewan Roughriders. **Joe Moss**, Maryland '52 (Beta), is an assistant coach with the Toronto Argonauts. If there are other ΣAE administrators, coaches or players currently in pro football, please let us know.

In the United States Football League, linebacker **Ed Smith**, Vanderbilt '79 (Tennessee Nu), of the Arizona Wranglers was named to the league's all-star team and played in the championship game. Veteran offensive tackle **Jeff Hart**, Oregon State '75 (Alpha), was a regular for the Los Angeles Express. **Pat Saindon**, Vanderbilt '82 (Tennessee Nu), started at offensive guard for the Birmingham Stallions.

Baseball

The leading ΣAE player this year was third baseman **Craig Nettles**, San Diego State '66 (California Theta), who starred for the San Diego Padres, 1984 National League Champions. He hit more than 20 home runs in a season for the eleventh time. Joining Craig on the Padres was relief pitcher **Floyd Chiffer**, UCLA '78 (Delta). Pitcher **Larry Sorensen**, Michigan '76 (Iota-Beta), was with the Oakland A's. **Ken Caminetti**, San Jose State '84 (California Zeta), was selected as an alternate to the U.S. Olympic baseball team as a third baseman. He recently signed with the Houston Astros. Let us know about other ΣAEs who played pro baseball this year.

Golf

Once again, ΣAE has more golfers on the PGA tour this year than any other

fraternity. Through the end of August, **Andy Bean**, Florida '75 (Upsilon), was sixth on this year's money-winning list with over \$300,000. For his career, Andy has earned more than \$1.7 million. **Gary Koch**, Florida '74 (Upsilon), as of late August was in 13th place with nearly \$250,000 won for the year (see the summer, 1984, issue of *The Record*). Other brothers who are listed in the 1984 PGA Tour Book are **Buddy Gardner**, Auburn '77 (Alabama Alpha-Mu), **Bob Gilder**, Arizona State '73 (Beta), **Jerry Heard**, Fresno State '69 (California Iota), **Bill Kratzert**, Georgia '74 (Beta), **Bob Murphy**, Florida '66 (Upsilon), **Tom Pertzur**, Arizona State '73 (Beta), **Larry Rinker**, Florida '79 (Upsilon), and **Tommy Valentine**, Georgia '71 (Beta).

College Football

Doug Kenna, Mississippi '45 (Gamma), became the 27th ΣAE enshrined in the National Football Foundation's College Football Hall of Fame this December. He played quarterback at Ole Miss in 1941, then led Army during the 1942-44 seasons.

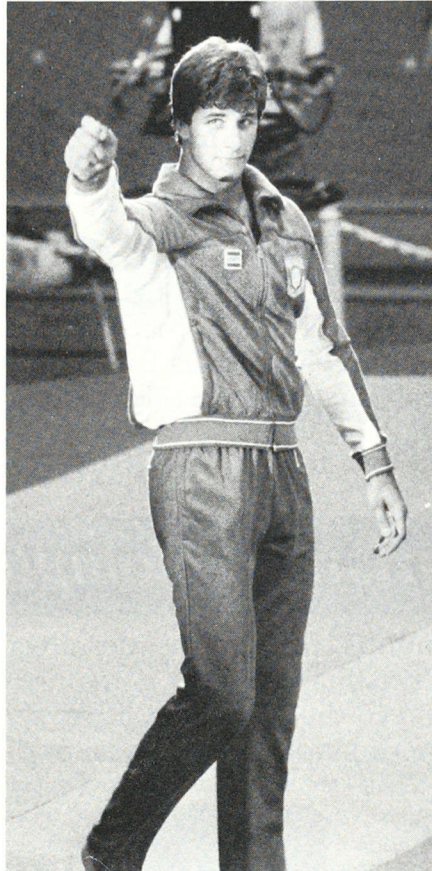
Among the leading returnees to college gridirons this fall are linebacker **Knox Culpepper**, Georgia '85 (Beta), an All-America candidate for Georgia who had 166 tackles last year; All-MAC linebacker **John Offerdahl**, Western Michigan '86 (Delta), who posted 194 stops last season; defensive tackle for Princeton **Mark Berggren**, Princeton '85 (New Jersey Alpha), offensive guard at UCLA **Onno Zwaneveld**, UCLA '86 (Delta), Michigan running back **Ben Logue**, Michigan (Iota-Beta), and **Jeff Christman**, Franklin '85 (Indiana Alpha), defensive end last season for Franklin who was selected to the All District 21 all-star team. If there are others, please let us know!

In other sports, **Tracey Nieto**, Puget Sound '85 (Washington Gamma), made it to the quarter finals in the tryouts for the U.S. Olympic volleyball team, and **Erik Glotte** of the same chapter and class recently made the national crew team in the 3-man boat class. ■

Our readers are encouraged to send more information on other ΣAE amateur, professional and collegiate athletes to the editor of The Record at the National Office.

ΣAE Olympic Update

In the summer issue of *The Record*, four undergraduates were presented in ΣAE and the Olympics, Part II: The Chase. When the article went to press, those men were competing for spots on the U.S. Olympic team. Here's how they fared.



Bob Berland, San Jose State '84 (California Zeta), went on to win the silver medal in the 189 pound class judo competition. Berland had won two consecutive NCAA titles in his weight class before the Olympic Games, and he plans to continue competing through the 1988 Olympic Games in Seoul, South Korea.

Robin Leamy, UCLA '83 (California Delta), made the Olympic swim team and competed in the early heats of the 400 meter freestyle relay. Chris Silva, UCLA '85, did not make the team, and has one more year of competition remaining with the UCLA team.

Congratulations to all of these men for their efforts!

See pages 6 and 27 for more ΣAE's involved with the 1984 Olympic games.



Ron Kiefel, Colorado School of Mines '84 (Colorado Lambda), won a bronze medal as part of the American cycling team in the 100 kilometer time trial, the first time the United States had ever won a medal in that competition. Kiefel and his teammates finished in 2:02:46 behind the Italian and Swiss teams.



Subscription Policy

From time to time, it is necessary for *The Record* to communicate to its readership the terms upon which they receive the magazine. While the subscription policy of *The Record* is a little complicated, it has proved to be the most equitable solution to rising printing costs and limited funds.

It was decided at the 1981 Kansas City Convention that the following criteria for receiving the magazine be adopted: that each member of ΣΑΕ receive *The Record* quarterly while he is an active member of his chapter, and for five years after graduation. During that time the magazine will be sent to the address of his parent or guardian. After the five year period, he may renew his subscription at a rate of \$10 a year to the fraternity's annual giving program. For a cumulative gift of \$100, the member shall receive the magazine for life. The Annual Report issue of *The Record* shall be sent to every alumnus for whom the National Office has a good address, regardless of their subscription status.

For a more detailed description, see the National Laws, Article 43, Section 155.

Coming in the next issue of

THE RECORD

The 1984 Annual Report A look at the good health of the fraternity and The Levere Memorial Foundation; chapter statistics; fraternity directory and a report from the National Office.

Hazing An update on the "Death by Hazing" article which appeared in THE RECORD three years ago; what is being done on government levels to stop this blemish on fraternity life.

Also a profile of a four-star Air Force general who acted as an advisor to the space shuttle program, and two SAEs with the mighty Philadelphia Eagles — one on the field and one coaching from the sidelines, and a look at student entrepreneurs.

Look for it in January!

Make Your Christmas Complete with SAE!

For the undergraduate or alumnus, SAE accessories always make a perfect gift. Order now, and please indicate if Christmas delivery is required. Make checks payable to Sigma Alpha Epsilon and send to the National Office, c/o Sari Hollander, P.O. Box 1856, Evanston, IL 60204-1856. If shipped to Illinois, add 7% sales tax.

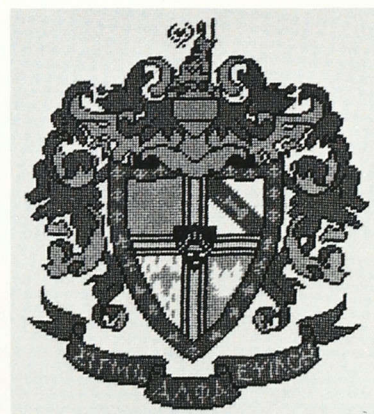


Cross Pen and Pencil Set The quality and elegance of Cross can be yours in this attractive 12k gold-filled pen and pencil set. Mounted with the SAE coat-of-arms. **\$46.00**

Blazer Buttons A stylish set of seven gold-finish buttons (3 large, 4 small) displaying the SAE coat-of-arms. **\$30.00**



Pewter Tankard. An English-style mug fashioned of polished pewter with a glass bottom, 16 ounces. **\$30.00**



Needlepoint kit. Fashion a personable gift of the coat-of-arms with this needlepoint kit, comes with seven colors of yarn, 11½ x 15 inch canvas, needle and instructions. **\$22.00**

Lowering the Ugly Head of Ignorance

How a chapter rose above a community uproar to educate itself and an entire university.

by Per Sundgren

Per Sundgren is an exchange student at the University of Cincinnati and a member of the Ohio Epsilon chapter.

IN MAY, 1984 THE OHIO EPSILON CHAPTER at the University of Cincinnati became the first student organization to have a course proposal accepted by the university's administration. The course was basically an approach to study prejudice and stereotyping directed toward minority groups in American society, and may become part of the university's accredited curriculum next year. The chapter also won an award this spring that included a cash prize of \$500 for the best "human relations" programs at Cincinnati as part of the school's human relations week.

This was a far cry from the atmosphere that prevailed at the chapter two years ago. In January, 1982, an unfortunate party took place at the James Gamble Nippert Memorial Lodge of Ohio Epsilon. It was a "Martin Luther King Trash Party" held on the civil rights leader's birthday. Partygoers were encouraged to bring with them what they considered paraphernalia typically associated with blacks. Word got around campus, and eventually to the door of the administration building. What had begun as a seemingly harmless joke in the chapter's eyes was seen as something far more seri-

ous by the rest of the community. In fact, it sparked a powder keg of public debate.

Black as well as white leaders in Cincinnati were outraged at what they saw as blatant racist behavior that was dangerous to the black community and the entire city of Cincinnati. The National Organization for the Advancement of Colored People (NAACP), along with several thousand demonstrators who gathered outside the administration building days after the party, demanded that the university kick ΣΑΕ off campus.

The university administration naturally viewed the party as racist and prejudiced in its nature and placed the chapter on an immediate two-year suspension. The university's president at the time, Dr. Henry Winkler, mandated that the chapter "develop a constructive plan, containing the elements of both education and service, which would contribute the members' awareness of the wrong that had been done and improve their sensitivity to the innate dignity and values of all members of society." The Supreme Council of Sigma Alpha Epsilon followed suit and placed the chapter on indefinite probation.

But the publicity, negative and

otherwise, had only just begun. The national media immediately picked up the story and the chapter house was practically surrounded daily by newsmen. The story even reached foreign newspapers. The chapter began to receive phone calls and telegrams from alumni who wanted to know what was going on at their old chapter. There were other phone calls too: bomb threats. Luckily, none were carried out.

It was a serious and honest concern among the brothers to repair the damage that had been done, not only to the reputation of Ohio Epsilon, but to the entire fraternity of Sigma Alpha Epsilon. They lost no time in accepting responsibility for their actions and going to work repairing the tremendous damage they had brought on themselves. They were fortunate to have brothers J. P. Morgan and Charles Stroebel along with many active and influential alumni to lead them in this task.

In the chapter, Eminent Archon J. P. Morgan conducted business with the university administration and the media with skillful diplomacy, while Stroebel constructed the educational plan which the administration had required to ele-

vate the chapter's awareness of minority groups and their needs.

Brother Stroebel's plan consisted of three main categories designed to accommodate the educational and service-oriented pursuits of the chapter. These categories were learning opportunities, small group interaction, and community outreach.

The educational aspect of the plan was broken down into sub-groups, the first being lectures and formal presentations on black history, American minority cultures, oppression of blacks, and other minority problems. The second sub-group included ways to encourage brothers to enroll in Afro-American study classes.

The group interaction section of the plan allowed brothers to express their feelings on the subject of race relations and increase their awareness of the needs of such relations.

The community service section consisted of continuing an already strong program that included fund-raising projects and various types of volunteer work. In a follow-up phase, additional initiatives encouraged other greek organizations to participate in programs similar to Ohio Epsilon's, and it also encouraged the Interfraternity Council to form a "human relations" committee.

The participation in the plan included not only active brothers, but also the entire pledge class, who made it a part of their pledge program. Throughout the year, their participation was just as much a part of the plan as that of the active brothers.

The speakers that came to the chapter house through our invitations produced the desired effect. There is a general feeling in the chapter that the program has presented a chance to increase their knowledge of a subject that otherwise would have passed them by.

Finally, in September, 1983, the chapter went up for a review by the university. Because of educational progress of the chapter, the suspension was withdrawn a year early. A tremendous change had taken place in the chapter, and the university administration saw no need for the suspension. But they pointed out the importance of the continuation of some kind of educational program in the future within the chapter.

A few months later, in January, 1984, the Office of Student Life and Programs

offered an award to any student organization that could construct a plan that would improve human relations on the entire campus. We decided that our plan which had won the respect of the administration could win this award.

We enhanced our previous plan to form an interdisciplinary course that would cover the entire ten weeks of an



Confrontation between chapter members and a protester outside the Cincinnati chapter house.



The largest demonstration ever held at the University of Cincinnati outside the main administration building where speakers demanded the removal of ΣΑΕ from campus.

academic quarter. It was expanded to include the subjects of ethnicity, sexism, religion and poverty. Furthermore, each class session would be taught by a professor from the department most practiced to that session's subject.

Each session was designed to advocate tolerance and the need for social change in attitudes towards certain minority groups.

Our chapter won the contest which the Office of Student Life had sponsored, was awarded \$500 in cash, and the course is well on its way to becoming a regular part of the university's curriculum by the fall of 1985.

Ohio Epsilon is hoping for the course's success, because if it can improve the human relations at the University of Cincinnati, then some good will have come from the mistake that was made two years ago. That will be reward enough for our chapter. We've learned that discrimination against minority groups in this country is still a dilemma, even twenty years after the passage of the Civil Rights Act in 1964. It has also been obvious that the starting point to contribute to a solution to racial prejudice begins through education. Maybe our approach to the problem could be a guideline for other chapters that need to search for a solution on their college campuses. ■

Michigan Gamma Ends Eleven Year Search for a New Chapter House



The new home of Michigan Gamma at Michigan State University.

by Thomas Walther

In 1973, the Michigan Gamma chapter at Michigan State University was forced to sell its first chapter house to avoid foreclosure. The sale began the darkest period in the chapter's 57-year history, but this July, the brothers embarked on a brighter period with the purchase of a new house.

As a result of declining interest in fraternities in the early 1970s, membership and alumni support declined to the point that the bills could not be paid to support the grand old home that stood on Bogue Street, the only fraternity house at the time directly on the MSU campus.

"The group that bought the house (from the chapter) knew they were getting a deal, but we had to sell it fast to avoid foreclosure by the bank," said Bill Fiscus, *Michigan State '50 (Gamma)*, former archon of Province Omega. "We simply had no alternative."

No other stumbling block can befall a chapter quite as hard as losing its house. With no physical focal point from which

to sustain their brotherhood, the brothers drifted for some 11 years with little guidance and no incentive to keep the chapter going. At one point, in fact, the membership was down to four members who were ready to call it quits.

As usually happens when a group like this is down for the count, one member decided to take charge and rebuild the chapter's membership. Mike Finley,

Michigan State '82, decided to initiate an active search for another permanent chapter house — no easy task in East Lansing, Michigan, where the population literally doubles during the academic year.

Finley assembled the three other members to discuss his ideas. It was decided that the ninth floor of Shaw Hall, a dormitory on campus, would be designated as temporary quarters for Michigan Gamma. Since there was no permanent facility, new members could live in the dorm and still have every advantage of the fraternity.

So successful was this undertaking that soon afterward nearly everyone on the floor was an ΣΑΕ! The brothers then decided to collectively rent a house to serve both functions of living quarters and fraternity house, which is the way they have functioned for the past five years.

Meanwhile, Rod Dickinson, *Michigan State '48*, took it upon himself, with the help of the chapter and the Detroit Alumni Association to locate a permanent chapter house.

"When I think back at some of the houses we almost bought, I am so glad that things worked out the way they did," said Dickinson. "East Lansing is



The chapter's old home, at around 1930.



A brother pauses while helping to build the back patio...



... and others gather around the completed project.



Brothers at the back of the house.



A very good year for Michigan Gamma.

definitely a seller's market, and when you are looking for a house to hold 30 to 50 guys, you are very limited.

"To make matters worse," he explained, "the city housing codes are very strict and all but prohibit building or extensive remodeling."

The "new" Michigan Gamma chapter house was purchased on July 6, 1984, from the Gamma Phi Beta sorority, who were, like the MSU ΣΑΕs 11 years before, in a rebuilding period and unable to manage the financial obligations.

Because of Dickinson's insurance and investment sales business, a real estate company handling the sale contacted him, which allowed him to have first refusal on the house. "We immediately put down a deposit to hold it and keep it off the market before it even got on," said Rod. "We knew that a chance like this would never come again!"

Dickinson and Tom Walther, Cincinnati '81 (Ohio Epsilon), immediately contacted the Detroit Alumni Association to get them up to East Lansing to see the house. "When they walked through, they, like us, could not believe the house," said Dickinson. Simply put, the house seemed to be made with the Michigan Gamma chapter in mind.

The house is slightly larger than 10,000 square feet and contains a full service commercial size kitchen with a cook and housekeeper, formal living room, formal dining room accommodating 50 people, a TV room, study room, a laundry room and a huge bathroom with six showers. Include a housemother's apartment, guest room, party and chapter rooms in the basement, a large patio and a tennis court on the parking lot. It adds up to just short of a resort. Incidentally, it is strategically located across from two large sorority houses on 342 North Harrison Avenue and it is within a short bike ride of the bus station and downtown shopping. The alumni can show their support to assure that this house never slips through the chapter's hands by making a tax-deductible contribution to The Levere Memorial Foundation, c/o Bill Fiscus, 17658 Mack Avenue, Gross Point, Michigan 48224, (313) 885-4200. No contribution is too large or too small! ■

Thomas Walther, a 1981 graduate of the University of Cincinnati (Ohio Epsilon), is Michigan Gamma's Chapter Advisor.



Tradition Tumbled

Since 1749 Washington and Lee University has been an all-male institution. This year it is bracing for the greatest challenge in its history — the admittance of women.

by Scott Carter Mason

It began as a rumor, making its way quietly toward the peaceful Shenandoah Valley. We didn't take it seriously at first, and yet it pushed onward. We became angered by it. Then we feared it. Then we fought it. And still it came, relentlessly, determined in its course.

Coeducation, that dreaded evil, had at last spilled its infection upon Washington and Lee University.

It seemed as though the great white pillars that lined Washington and Lee's colonnade had become shattered at their core, as if the very foundation upon which they proudly stood had begun to crumble. Two hundred and thirty-five years of all-male tradition, along with a fraternity system almost as old, had been ground into dust.

It had been at best a difficult year at Washington and Lee, a year marred by the single greatest controversy ever to hit its campus. Division over the coeducation issue triggered campus polls and debates, and fiery editorials sparked the pages of the school newspaper weekly. At times the controversy took the form of rational, thoughtful analysis. At other

times it took the form of bumper stickers that read, "Better Dead than Coed" and banners that responded "Better Coeds than Deadheads."

Proponents saw a lot to gain from coeducation. For one thing, it would help the admissions program which had been struggling to find qualified applicants interested in an all-male university. But it would also make the University's atmosphere more "flavorful." Women would add a new dimension to W & L. They would dissolve its so-called traditional narrow-minded barriers and



The Lee Chapel at W&L.

help enhance a more well-rounded education.

But there was something to be lost from coeducation — atmosphere. Atmosphere of tradition. For tradition is very much a part of Washington and Lee, from its old red-brick buildings and stately colonnade to its centuries-old commitment to turning out proper, well educated gentlemen. It's an atmosphere not seen, not easily described, but felt.

Maybe the small, intimate classrooms and the one on one rapport among students and faculty have something to do with that feeling. Maybe the highly respected student-run Honor System has something to do with it. Maybe it's walking beneath the towering pillars of the colonnade or admiring the marble statue of Robert E. Lee, president of the university from 1865 to his death in 1870, which lies over his tomb in the chapel that bears his name.

Yes, it was a year filled with unrest, with speculation and counter-speculation, with rationality and irrationality, with emotion, anger, bitterness and desperation. Σ AE was not untouched by it all. Within its own ranks there were dis-



The Virginia Sigma chapter house at W&L.

agreements over coeducation. Half of its members took part in a campus-wide sit-in, staged in W & L President John Wilson's office to protest the admission of women, while the others refused to participate.

But the admittance of women beginning with the fall of 1985 was decided upon, and all the unrest has subsided. Students, faculty and alumni alike appear willing to support the decision, realizing that it was made for the good of the university.

Nevertheless, uneasiness prevails as to the prospect of how coeducation will affect W & L. Many fear that W & L's fraternity system may be critically damaged, if not destroyed, by the coeducation decision. Seventeen fraternities line Washington & Lee's campus, an enormous number for a school with an enrollment of less than 1500 students. The average number of members per house is about 50. Needless to say, it's a strong system.

As Washington & Lee begins accepting women, it will cut in half the number of men it would normally admit, because total enrollment will remain roughly the same. Consequently, come rush, 17 fraternities will be vying for a far smaller group of potential members. What's likely to happen, and what many people fear will happen, is that a lot of fraternities won't be able to compete and will die.

The Virginia Sigma chapter of ΣΑΕ at Washington & Lee is a strong, if not the strongest, fraternity on campus. And yet even it may not be out of the woods. No one is really quite certain what will happen once coeducation becomes a reality. But it is inevitable that an already competitive situation will become fierce. And, because of the increased level of competition, "dirty rush" cannot be dismissed.

Who's to say which fraternities will survive and which ones will be swallowed up by the competition? There's no telling what will happen once the 1985 rush fray begins. Weak fraternities will become fiercely aggressive knowing they face good chances of extinction. Strong ones may become less competitive knowing they face good chances of survival. But no fraternity, not even ΣΑΕ, can be completely confident.

And so there is fear. For no one can really be sure what will take place when 235 years of tradition come tumbling down. ■

One who has been close to and affected by the advent of co-education at Washington and Lee, Scott Carter Mason is a 1984 graduate of W&L and a member of the Virginia Sigma chapter.

Clarification

In its recent spring issue, *The Record* reported the re-installation of South Carolina Phi at Furman University. The editor wishes to clarify that the chapter was established at the City of Greenville, South Carolina, where Furman is located, and not at the university itself. Readers of the article may recall that the Baptist Convention of South Carolina, the ultimate governing body of the university, has a ban in force against fraternities at Furman. Elsewhere in the issue, Jeffrey Gasser, son of Founder Member E. R. Gasser, was incorrectly identified as having been a member of the Georgia Beta chapter at the University of Georgia. Jeffrey is a member of Georgia Phi at Georgia Tech. In the list of ΣΑΕ Interfraternity Council presidents, Chris Campo was incorrectly identified as being the IFC president at Rockhurst College in Kansas City, Missouri. The real president, also an ΣΑΕ, is Thomas



J. Brink. Scott Molitar, the brother whose photograph appeared on the cover of that issue, is a member of Florida Epsilon at Central Florida University, and not Florida Upsilon at the University of Florida as was stated in the magazine.

Because of the late publication of this fall issue, chapters will not be able to submit chapter news for the winter issue, which will be in production during the month of November. The deadline for the spring 1985 issue will be February 1.

CHAPTER NEWS BRIEFS

Iowa State

The men of the Iowa Gamma chapter at **Iowa State University** had a very successful '84 spring semester. One highlight was the ΣAE Fight Night which is the chapter's annual fund raiser for the American Cancer Society. The event drew 30 amateur fighters competing in three one-minute rounds, and it raised \$800 for the society. Later in the semester, the brothers gathered all available funds (almost \$8,000) and energy to team up with the women of Gamma Phi Beta to build a float for the annual VEISHEA parade. The parade is a celebration of all of the different colleges that make up Iowa State University, and the float, carrying the theme of "Return of the Jedi," was a real crowd pleaser.

San Jose State Full of Champions

This past year the California Zeta chapter at **San Jose State University** has compiled an impressive record in intramural and intercollegiate athletics. Last fall, the chapter won the IFC football championship and the California Greek Softball Championship sponsored by the California Eta chapter at the University of California at Santa Barbara. In the spring, the brothers secured their fifth

straight IFC All-Sports trophy by winning championships in softball (both IFC and university intramural) and soccer. On the intercollegiate level, ΣAE was well represented on the Spartan Baseball team with pitcher

also ran a football 200 miles between San Jose and Fresno, raising \$500 for the school's athletic program.



The ΣAE float entry at Iowa State's VEISHA.

Kevin Sullivan, outfielder Scott Rettig, and third baseman Ken Caminiti. In Judo, Bob Berland won his second NCAA championship this year and captured a silver medal in judo at the 1984 Los Angeles Olympic Games (for more on Caminiti and Berland, see page 19. Seven members of the Spartan football team are members of the chapter: they are quarterback Bob Frasco, running back Frank Robinson, receiver Dex Chatteleton, and defensive linemen Dan Clark, Mike Fitzsimmons, Brett Grauss and Bryan Grauss. The chapter

Randolph-Macon Takes Title

The Virginia Alpha chapter at **Randolph-Macon College** in Ashland, Virginia, played host to the 1984 Province Gamma convention March 30-31. The convention was a tremendous success, attracting more brothers than any convention in recent history. Part of the program was the first Convention Basketball Tournament which was duly won by the brothers of Virginia Alpha, pictured here receiving their trophy from former Province Gamma Archon Richard Napier, Virginia '74 (Tau).

New Mexico State Dedication to Brother

The New Mexico Phi chapter at **New Mexico State University** stamped its achievements on campus for all to see last spring by capturing several all-greek titles. They started by winning the all-greek golf tournament by 25 strokes ahead of the nearest competitor, then took first place in the annual

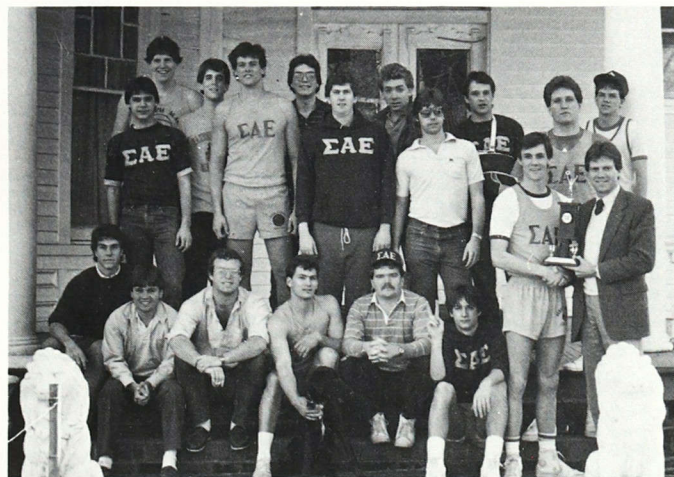
Greek Sing for the second year in a row, dedicating their performance to Mike Alcouffe, a brother who had lain in a coma for three months following an auto accident. The chapter then captured first place in the Greek Games which included tug-of-war and chariot race competitions. New Mexico Phi also raised \$1,000 for the Easter Seal Society through the Kissin' Close-Up Games, and \$2,000 for the American Cancer Society.

ΣAE Always First!

While ΣAEs were involved in the forefront of the Olympic Games in judo, bicycling and swimming, another brother took part in the ceremonial part of the 1984 LA Games, which proved to be just as exciting as the athletic events. Bill Dedes, **Cal State Fullerton '86** (Pi), represented Greece in the International Parade and Dance during the opening ceremonies. "Even with the Olympic pin fever that hit," said Dedes, "I was proud to wear only my active badge in the ceremony." Dedes was able to participate in the ceremonies through his involvement with the Greek community in Orange County, California.

Bowling Green Chapter Awarded for Service

The Ohio Kappa chapter at **Bowling Green State University** had a successful 1983-84 school year, having been awarded for their achievements with the Outstanding Chapter award from the Bowling Green State IFC. The chapter also received the Hollis A. Moore Service Award for their extensive community and university service program. Individuals recognized at the IFC spring awards ceremony on April 12, 1984 were Delbert Hanes as outstanding president and Robert Skowronek as past president of the IFC and as Outstanding Greek Man. In addition to those awards, Ohio Kappa placed second in the Interfraternity Membership Development Council Award.



The Virginia Alpha tournament winners.

ΣΑΕ NEWS-GRAM

ALL THE LATE-BREAKING NEWS FROM 1856 SHERIDAN ROAD

1985 CONVENTION NEWS—Sigma Alpha Epsilon will conduct its 129th Anniversary National Convention at the Hyatt Hotel in Atlanta, Georgia, June 16-18, 1985. All chapters and alumni associations should take note of this important deadline: **December 15** is the last day on which proposals for amendments to the national laws, petitions for new charters, and petitions to host the 1989 Convention will be accepted. All pertinent information on the 1985 Convention will be mailed to all chapter and alumni association presidents in February.

FORM A AND P CHANGES—All chapters and colonies will receive by January 15 a bound book of Pledging Reports (Form P) which will be used in place of the old single pledging report. Each pledge will be recorded on a singular form to be completed and sent to the National Office within 10 days of pledging. It is the responsibility of the Eminent Treasurer to mail all forms and the accompanying \$25 per man fee to the National Office. After the Form Ps have been received, the National Office will issue a computer-generated Initiation Report (Form A) to the chapter. It will be mailed to the chapter following receipt of the chapter's pledging reports. This new Form A report will contain directions for submitting it to the Eminent Supreme Recorder at the time of initiation. The \$140 per man initiation fee should be mailed with the Form A. A more detailed explanation of this new procedure will be sent to your Eminent Treasurer in December.

NATIONAL STAFF POSITION AVAILABLE—The position of Director of Communications at the National Office will become available December 31, 1984. The Director of Communications serves as Associate Editor of The Record, directs the publication of the Phi Alpha, the Phoenix and other publications, and as the director of the fraternity's promotional and public relations efforts. Those with journalism backgrounds are preferred, but any interested brother may send a letter of introduction and resume to Kenneth D. Tracey, Eminent Supreme Recorder, Sigma Alpha Epsilon, P.O. Box 1856, Evanston, Illinois 60204-1856.

PHI ALPHA TO APPEAR IN EARLY NOVEMBER—Chapters and alumni associations should expect to receive the fraternity's private newsletter, the Phi Alpha, close behind this issue of The Record. It will contain valuable information regarding the National Convention in Atlanta next summer, plus articles on various subjects dealing with chapter and alumni development. Don't miss it!

NEW PHOENIX AVAILABLE—A seventh printing of The Phoenix, the manual of Sigma Alpha Epsilon, has been printed and is available to chapters and other interested brothers. Chapters receive the book free of charge for every new pledge, and other members may purchase it for \$9.00. Orders may be placed by calling or writing Sari Hollander, Membership Administrator, Sigma Alpha Epsilon, P.O. Box 1856, Evanston, Illinois, 60204-1856, (312) 475-1856.

MINIMUM STANDARDS—Every ΣΑΕ chapter should receive by the beginning of the spring semester, 1985, a new manual describing the Minimum Standards for Chapter Operations. In the manual are guidelines established by the National Office, standards by which the chapter's operations are evaluated by the Education and Leadership Consultants during their visits.

CHAPTER AWARDS—Chapters and alumni associations will receive in early January a pamphlet describing the fraternity's many awards, along with applications for those awards which will all have an application or nomination deadline of May 1, 1985.

STUDENT LOANS AVAILABLE FOR SPRING 1985—The Levere Memorial Foundation has about 20 student loans available for the spring, 1985 semester. Brothers who wish to apply must be of junior standing at their university, and must have a cumulative grade point average of 2.75. The following restrictions apply: no more than three loans will be granted to a chapter per school year, there may be only one loan per student per academic year, with a limit of two loans for the duration of his college years, and the maximum amount of these two loans may not exceed \$1,500. The loans have a fixed interest rate of 6%. For applications write Roberta Nelson, Student Loan Administrator, The Levere Memorial Foundation, P.O. Box 1856, Evanston, Illinois, 60204-1856.

BOARD OF TRUSTEES MEETS—The Board of Trustees of the National Endowment Fund of Sigma Alpha Epsilon met on Saturday, September 29. The National Endowment Fund provides chapter house mortgage loans, and at the meeting, over \$200,000 worth of these loans were approved for chapters at the University of Toledo, the University of Rhode Island, Bradley University and Indiana University. The length of the loan was decreased from 20 to 15 years, but the interest rate of 12% remained the same.

The S.A.E. Ski Cap



E&L Consultants (l-r) Scott Haggard, Mike Fahrback and Woody Wood talk things over after a day on the slopes; they're kept warm by their TOQ ski caps. Made of a soft blend of top-grade wool and acrylic, they'll keep you warm at below-zero conditions without being too warm in the sunny mid-day hours. Great for either downhill or cross country skiing, made for a roomy fit. Available in:

- Navy with silver lettering
- Black with silver lettering
- Navy blue with red lettering
- White with navy lettering

\$18

Send orders with check or money order made payable to Sigma Alpha Epsilon, P.O. Box 1856, Evanston, Illinois 60204-1856. All orders should include \$3.00 for shipping and handling. If shipping destination is in Illinois, add 7% sales tax. Allow four weeks for delivery.



Since its beginning, The Levere Memorial Foundation has relied solely on the generosity of the brothers of Sigma Alpha Epsilon for support to maintain its programs and its beautiful headquarters, The Levere Memorial Temple. In the past year, the Foundation has spent in excess of \$100,000 to preserve our proud heritage in the Temple, while continuing to provide scholarships and loans to undergraduates, and the many services through the National Office.

But the well from which we draw funds to complete and sustain these projects is not a bottomless one. The Levere Memorial Foundation needs your generosity to continue the tremendous task of preserving our past, assisting our undergraduates with their education today, and ensuring our future. Please send your tax-deductible gift to The Levere Memorial Foundation, P.O. Box 1856, Evanston, Illinois 60204-1856.

You will be doing your fraternity a great service.