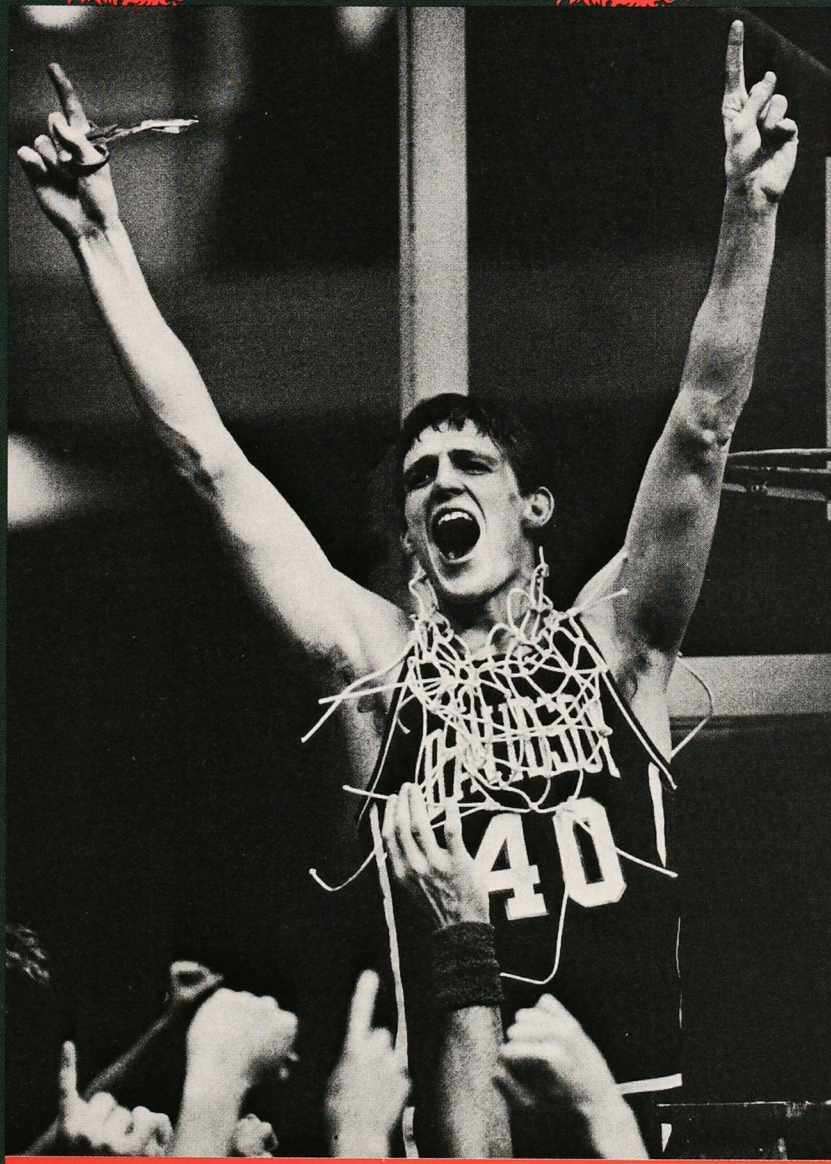


# THE RECORD

OF SIGMA ALPHA EPSILON

FALL 1986



**WINNING:  
ΣΑΕ's Finest Tradition**



## Message from the Eminent Supreme Archon

By J. Clarke Houston, III

During the 51st Leadership School, one day was designated ΣAE letters day. This was the day that all participants were encouraged to wear the ΣAE letters throughout the day — and they did! One could see all types of shirts, shorts, hats and sweatbands emblazoned with our Greek letters. What a sight! What spirit!

One shirt was of particular interest — on the front was imprinted “ΣAE Pride” in bold purple colors. It prompted one to stop to think of exactly what pride can or does mean to this fraternity.

Pride — or showing it in behavior — can cut either one of two ways. One way is defined by an overly high opinion of oneself, exaggerated self-esteem, conceit, arrogance. It espouses the belief that the group can do no wrong, that the group will protect the individual, that individual behavior will not reflect on the group as a whole, that in the name of unity, brotherhood, and fraternity, “anything goes.”

Unfortunately, that display of pride has done ΣAE harm in some quarters. Manifesting itself in behavior which is generally unacceptable and unbecoming of The True Gentleman, this form of pride is the *antithesis* of that for which we stand. Disrespect for the rights and feelings of others, alcohol- or drug-induced “macho” behavior, poor scholarship, hazing, ill treatment of women, and indifference to public image are examples of that disdainful notion of pride that can make us all losers.

The second way pride can be defined is a sense of one’s own dignity or worth, self-respect, a delight or satisfaction in one’s own *and others’* achievements. It espouses the belief that we stand for those ideas which lift the individual beyond the limits of his own personality to fit into the higher order of mankind. This sense of pride, *tempered with humility*, can be an extraordinary asset to the individual and to our fraternity in general. This notion of pride can make us all winners.

Consider these descriptions of our fraternity from *The Phoenix*: “opportunity for self development,” brothers are “challenged to give of themselves,” the fraternity “fosters ... friendship, brotherhood, making and keeping friends,” “to live as a friend in the fullest sense of the word,” “to live and work successfully with others,” “respects the dignity and worth of others,” “seeks understanding and cooperation” and “able to disagree openly ... able to trust each other.” These words describe the atmosphere in which a *winning* sense of pride develops.

Which definition of pride fits us? What would the casual outside observer tell us about ourselves? Would we hear gentlemen, good will, propriety, self-control, humility, frankness, sincerity, honor? Would we be considered winners?

Think about it.

# ΣAE PRIDE



## FROM THE EDITOR

With this issue, we salute all the winners within the realm of Sigma Alpha Epsilon. We are proud of our winning heritage and we are humbled by the accomplishments of our outstanding brothers.

Among the many winning individuals presented here, you will enjoy getting to know Brother Robert Ballard, chief scientist of the *Titanic* exploration. A member of California Eta at the **University of California at Santa Barbara**, he is an impressive man who is acclaimed by the scientific community as well as the media. Brother E. Wes Ely, Jr. has earned the nation's top Greek scholarship for graduate students. Read about

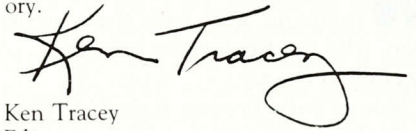
Wes, a medical student at **Tulane University**, in the "Alumni News" section of this issue. The ΣAE Foundation's Jones-Laurence Award for Scholastic Achievement was given to William Scott McCary, an Alabama Iota member at **Birmingham-Southern College**. Brother McCary won our fraternity's top scholarship award for many good reasons, as you will see in "Foundation Programs."

This issue also features the many alumni and undergraduate groups of brothers who worked together in teams to accomplish winning goals. ΣAEs have been producing many excellent programs and events in the last year — programs for scholarship within a chapter,

and for others, such as alumni, rush guests, pledges, other students and for the needy.

The late Emmett Moore was ESA from 1949 to 1951 but served his fraternity for decades on the local, province and national level.

He entered the Chapter Eternal on August 3rd. He was a winner all the way and we dedicate this issue of *The Record* to his memory.



Ken Tracey  
Editor

## THE RECORD

OF SIGMA ALPHA EPSILON  
PUBLISHED CONTINUOUSLY SINCE 1880  
CIRCULATION 52,422

**Kenneth D. Tracey**  
EDITOR

**Tracey Stoll**  
ASSOCIATE EDITOR

**R. Scott Haggard**  
**Dr. Glen T. Nygreen**  
**Cindy Thorson**  
CONTRIBUTORS

**Frances Gillan**  
CIRCULATION MANAGER

PUBLICATION ASSISTANTS:

**Jacqueline Haynes,**  
**Elaine Schubert, Marolyn Taylor**

Copyright ©1986 Sigma Alpha Epsilon Fraternity.

Published Spring, Summer, Fall and Winter by Sigma Alpha Epsilon Fraternity (USPS 457620). Second class postage paid in Evanston, Illinois and at additional mailing offices. The Sigma Alpha Epsilon National Fraternity office is located at the Levere Memorial Temple (P.O. Box 1856, Evanston, IL 60204). For information, call 312-475-1856 weekdays, between 8:30 AM and 4:30 PM Central Time.

**The Supreme Council:** J. Clarke Houston, III, Eminent Supreme Archon; Ben L. Allen, Eminent Supreme Deputy Archon; David M. Lance, Eminent Supreme Warden; William C. Chapman, Eminent Supreme Herald; M. Ronald Doleac, Eminent Supreme Chronicler; and Charles A. Preuss, M.D., Honorary Eminent Supreme Archon.

**On the Cover;** Last winter, Brother Gerry Born of North Carolina Theta hit a 28-foot shot at the buzzer, allowing the Davidson College Wildcats to defeat the University of Tennessee at Chattanooga in the Southern Conference championship basketball game. Gerry led the Wildcats in scoring and rebounding in the conference tournament, and was named the tourney's Most Valuable Player as well as All-Southern Conference.

## CONTENTS

### An ΣAE Winner: Navy's 'Bottom Gun'

*Find out what lies under the surface—meet Brother Robert Ballard, chief scientist of the Titanic exploration . . . . .* 2

### 'Tidal Wave' of Enthusiasm

*Delegates to the 51st ΣAE Leadership School wowed even veteran faculty members; the school featured several firsts . . . . .* 4

### Foundation Programs

*Winners of foundation awards announced . . . . .* 7

### Founder Members . . . . .

10

### Chapter Eternal

*Past ESA Emmett B. Moore and entertainer Rudy Vallee enter the Chapter Eternal . . . . .* 13

### Letters . . . . .

18

### Alumni News

*Winning brothers host exciting events, receive honors . . . . .* 19

### Chapter News

*Winning individuals and chapter programs reported . . . . .* 24

**ΣAE News-Gram . . . . .** Inside Back Cover



Advertising Representative:  
ParQuil Associates Ltd. Corp.  
341 Elm Avenue  
Bogota, NJ 07603  
201-343-7766



## 'Bottom Gun' Ballard Sets His Sights Low

By Tracey Stoll

**W**E USUALLY THINK OF A WINNER AS someone who sets their sights high, who reaches for new heights . . . or ascends to the top.

Not so with Brother Robert Ballard. Ballard is a winner, all right, but he can hardly be associated with ascents or heights. Dr. Ballard is a winner for diving to new depths, for descending to the bottom. The bottom of the Atlantic Ocean, that is, or the Pacific Ocean . . . or even Lake Ontario.

Ballard, **California at Santa Barbara '64 (Eta)**, marine geologist and oceanographer, is the chief scientist of the teams that found the "unsinkable" *Titanic* at the bottom of the ocean last year, and revisited it this past July. But

more importantly, Brother Ballard is a winner in the finest ΣAE tradition.

A goal-oriented man since his undergraduate days, Ballard (colleagues at the Woods Hole Oceanographic Institution in Massachusetts call him Bob) learned early to take charge of his life. He told *Oceanus* magazine last year, "I really believe that a person can be what he wants to be."

"I decided in 1972 that I was going to find the *Titanic*," he explained to *The Record*. "At Woods Hole, you can pretty much choose your own destiny and work toward it. The *Titanic* project is something I always wanted to do. I set my own goal and then worked to attain it.

"I'm totally goal-oriented," he added.

What kind of individual can so self-assuredly reach for the stars, in a manner of speaking, and actually capture them? How can he be so sure he will succeed?

**B**OB HAS BEEN COMPARED TO AN astronaut, Captain Nemo and Lewis and Clark, all rolled into one. Secretary of the Navy John Lehman, whose department financed the *Titanic* expedition, declared Ballard the Navy's "Bottom Gun."

He has accomplished many things, most of which took long periods of time to complete. Like his ancestor "Bat" Masterson (of Wichita, Kansas gun-fighting fame), he is something of a loner and unafraid of taking risks. He attributes much of his success to discipline, which he developed through many of his college experiences.

He went through the R.O.T.C. program at UC Santa Barbara, and was first commissioned as a lieutenant in the Army. He transferred to the Navy while still an undergraduate and got a job in the Ocean Technology Section, where he worked on submersibles.

Bob was in a rigorous academic program, earning his physical science degree with a double major in chemistry and geology, and a double minor in math and physics. He played intercollegiate basketball his freshman year, but was forced to give it up to devote more time to studying. He served as an officer at Cal Eta and was president of his junior class.

"The *Titanic* project drew upon many of the things I learned in those years," Ballard said.

"Primarily, it was teamwork — working closely with other people," he explained.

"Certainly the fraternity teaches you that, as do athletics and the military.

"During the *Titanic* project, just getting along with people was critical to the success of the operation. Fraternity life teaches you how to get along with people . . . You certainly don't get to pick all your brothers in the fraternity."



**Ballard:**  
**'The Titanic project is something I always wanted to do.'**



In getting along with people, Brother Ballard enjoys the benefits of a good sense of humor. Reporters have mentioned his humorous antics, and he admits to being a ham.

He developed his "hamming" skills while training porpoises to perform at Sealife Park in Hawaii, where he went to do graduate work in oceanography.

"Of course, when you're raised in a fraternity, you're all hams," he laughed.

**W**HAT WERE THOSE COLLEGE YEARS like for Bob at California Eta?

"Cal Eta was really a jock chapter. Intramurals were really big on our campus. Our football games against Delta Tau Delta drew more people than the school's football games.

"We did a lot of singing. The fraternity was really good at singing, although we didn't think of ourselves as singers per se.

"I don't know if they [Cal Eta] still sing as much as we used to."

Last fall, Dr. Ballard returned to UCSB to accept a Distinguished Alumni Award from the school's alumni association for his work in oceanography. Upon receiving his plaque for his "serious" work, he recalled for the audience a few pranks he pulled with ΣAE brothers and described how his college years prepared him for his current work. He finally "escaped" from a crowd of reporters to attend the homecoming football game with some brothers.

"We had a heck of a good get-together. They threw a party for me. I got to re-establish some friendships. It was really marvelous to get together and tell stories and sing songs," Brother Ballard recalled.

"After the UCSB game, the fraternity invited us all over to the house. There were about 15 of us there from our era. We all just started singing ΣAE songs, and the younger guys came in the room and started singing with us. We remembered all the words — it seemed like we knew more songs than the young guys did," he said chuckling.

**A**FTER EARNING HIS B.S. DEGREE, BOB pursued his graduate education while serving as an officer in the Navy. In 1970, he was assigned to the Office of Naval Research in Boston as Oceanographic Liaison Officer, and went to work on the technical staff at Woods

Hole. In 1974, he earned his PhD, which, he claims, made people start paying attention to what he had to say.

He was recently recommissioned as a commander in the U.S. Naval Reserves, and he contributes to the Navy's cause in his work at Woods Hole as well. Many of his projects are financed by the Navy, so Dr. Ballard does classified research "for submarine warfare," he explained.

Dr. Ballard's work has led to authorship of many books, articles and encyclopedia pieces. He wrote the book *Exploring Our Living Planet* for *National Geographic*.

In his spare time, Bob and his wife of 20 years, Marjorie, remodel and refurbish their 17-room farmhouse. The house is more than 140 years old, and completing it has been another long-term accomplishment.

"It's almost done, after 16 years of working on it," Bob reported.

"I also go to my kids' hockey games." (His sons are 18 and 16 years old.)

"They're really into hockey. Hockey was their choice, of course. I didn't know the first thing about hockey," he chuckled. Ballard was born in Wichita, Kansas and grew up on the West Coast.

**D**R. BALLARD HAS BEEN CREDITED with running an inventive lab on shore, between his journeys to "the deep" with submersibles and robotics.

"It's a creative lab," he explained.

"That means hardly any management structure," he laughed, explaining that he is the lab's manager.

"I dream up the concepts that we work on. Having a creative lab means putting together a team of very talented people. It's sort of a breeder-reactor of talent," he explained.

He has likened his role as chief scientist to that of a symphony conductor, orchestrating ships, submarine and 250 people. Much of his research has scientific significance for the future; it is exploratory in nature and bears similarities to space exploration.

**H**E VIEWS THE OCEAN FLOOR AS A hostile, sparse desert, and therefore does not visualize people inhabiting the ocean floor. What, then is the value of his work, to him and to our nation?

"It's the fundamental exploration of the new territories of America," Brother Ballard explained.

"The Exclusive Economic Zone pact essentially doubles the size of America. It's equal to four Louisiana Purchases.

"Lewis and Clark launched their expedition when America acquired the Louisiana Purchase . . . I would like to be part of that Lewis and Clark exploration phase of our new territory," Bob said.

"The only difference is," he added, his sense of humor intact, "Lewis and Clark got to interview a lot of Indians.

"I don't have any Indians to interview, so we have to work in the dark."

### 1987 Portland Convention T-Shirts Now Available

Brothers planning to attend the ΣAE 131st Anniversary National Convention in Portland will want to wear the official "city of roses" convention T-shirt to promote the convention among the brothers. Sales of the shirts support the Convention Committee's fundraising efforts, and will offset costs of convention events.

The T-shirt is a white adult Hanes Beefy Tee and the convention logo (larger than shown here) appears on the left chest area. Because Portland is known for its beautiful rose gardens, the logo features a rose in addition to the profile of the ΣAE lion.

To order your convention T-shirt, send a check for \$11 to ΣAE National Fraternity, Attn: Merchandise, P.O. Box 1856, Evanston, IL 60204. Please indicate size L or XL. VISA or MasterCard orders can be made over the phone by calling 312-475-1856 between 8:30 and 4:30 Central Time.





# 'Tidal Wave' of Enthusiasm Launches Second Half-Century of ΣAE Leadership Training

By Tracey Stoll

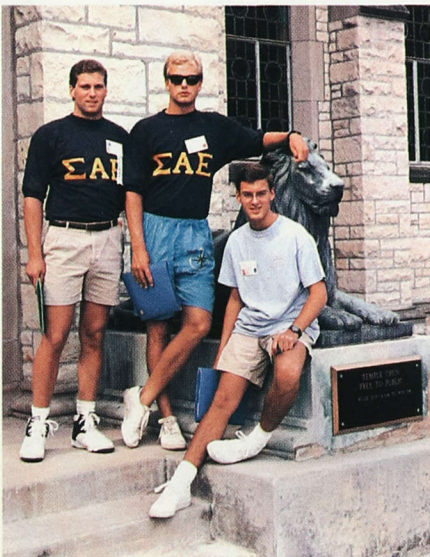
IF THE ENTHUSIASM OF UNDERGRADUATE brothers at the 51st Leadership School is any indication, the next half-century of ΣAE leadership training should be, in the words of one Michigan Iota-Beta brother, "awesome."

The high level of enthusiasm during this year's school was evident at every turn. Despite a four-delegates-per-chapter limit, a record 631 undergraduates registered for Leadership School, representing 175 of our 193 chapters. Brothers were visible all over the Northwestern University campus in Evanston, wearing their ΣAE letters or their chapter's t-shirts and jerseys.

They showed their enthusiasm during each general assembly session — cheering, clapping and whistling, doing "the wave" in the auditorium, and heartily singing ΣAE songs.

"This year's undergrads were more pumped up than I've ever seen anyone," commented Dean Morell, **Oregon '79 (Beta)**, a member of the volunteer alumni faculty for the school.

Brad Cohen photo



Colony delegates at the Levere Memorial Temple.

"The spirit of the school was extremely high," said Darrell Gibson, **Ball State '72 (Indiana Zeta)**, Director of Leadership Training for the fraternity. "The participation in the programs was very good."

A Georgia Epsilon brother from **Emory University** said that the 51st Leadership School "filled me with a real excitement about ΣAE."

One faculty member wrote, "I returned [home] with my 'batteries recharged' and a renewed commitment to ΣAE."

**'I returned [home] with my 'batteries recharged' and a renewed commitment to ΣAE.'**

"I cannot remember the excitement, enthusiasm and commitment to the school from the undergraduates in the three previous schools I attended," wrote another faculty member. "This was the most successful one ever."

Bill Stelter, Iowa Beta's delegate from the **University of Iowa**, said the school "showed that everything we'd been taught and told is true . . . about how the national fraternity stands behind you, and there's really a national fraternity. It really helped to see that."

Brian O'Neel, a delegate from **Cal Pi (California State University at Fullerton)**, described the 51st Leadership School from his perspective:

"It surpassed every expectation I had. People told me that I'd have a great time, that it would be great meeting all the 'bros,' and that I'd learn a lot. But the things I've learned, I can't even begin to describe.

"It's going to be very hard putting the feelings into words when I go back and try to share and express my feelings about what I've learned here with my chapter. It's because there's been so much . . . it's overwhelming. It's like a tidal wave."

## Colony Program

The 51st Leadership School brought together the largest-ever group of ΣAE colony delegates. Fifty undergraduates from colony groups attended the school, which included special seminars tailored for them, in addition to the general sessions and seminars. The colony group included delegates from the new **Yale University** ΣAE colony as well as the interest group at **University of North Alabama**.

"It was exciting to see 50 men so enthusiastic about the future of ΣAE on their campuses," said Brad Cohen, extension director for the national fraternity. "The 1986-87 school year should prove to be very productive for the fraternity's extension program, and the colony program at Leadership School provided added impetus."

## 200,000th Member

At the opening session of the school, Brother Noel "Sam" Painovich of Iowa Delta at **Drake University** received the 200,000th ΣAE badge from ESA Clarke Houston. Sam became the 200,000th member last spring when his pledge class was initiated.

Brother Houston said as he gave Sam his badge, "Since you have respectfully adopted it, may you always wear it worthily."



Painovich and Houston: 200,000th



## Focus on Alcohol Issues

There were several firsts at the 51st Leadership School. In addition to traditional alumni speakers and guest speakers, the delegates gathered for a general session on "Alcohol at Risk," a special presentation by Dr. Tom Goodale, **Iowa State University '62 (Gamma)**. Goodale, who is vice chancellor for student affairs at the **University of Denver** and serves as the Educational Advisor to the national fraternity, has spoken to many collegiate groups and Greek conventions on alcohol and substance abuse. His Leadership School message was strong and effective; most delegates wanted copies of his material to take back to their chapters.

Another popular first at this school was a seminar on legal issues and alcohol use. The growing liability crisis in our country and the 21-year-old drinking age law in most states have made it necessary for the fraternity to educate its undergraduate members about the legal ramifications of serving alcohol, and to provide chapters with alternatives to "wet" social functions.

The new seminar, conducted by Dr. Goodale and attorney Marc Franson, **Drake University '77 (Iowa Delta)**, was well-received, even by delegates who said they were previously indifferent to the problem. Many chapter rush chairmen and social chairmen expressed appreciation for the valuable information and ideas shared in the seminar. A videotape of the seminar is available from the national fraternity office.

**'I cannot remember the excitement, enthusiasm and commitment to the school from the undergraduates in the three previous schools I attended.'**

The fraternity's new **Suggested Chapter Alcohol Policy** was distributed to delegates during their Leadership School "chapter" meetings. The new policy was discussed within the groups and delegates took home many ideas for implementing the policy in their home chapters.

"The fraternity is really beginning to take the alcohol problem seriously," commented Father Bob Hedges, **Drake University '51 (Iowa Delta)**. Hedges serves as chairman of the fraternity's



**House Corporation Officers**

*Martin Huffman photo*

Committee on Men's Health Issues, and was pleased with the interest shown by delegates in the alcohol issue — its personal, societal and legal aspects. Through the  $\Sigma$ AE Foundation, Father Bob and the committee provide workshops on alcohol abuse prevention for individual chapters and province meetings upon request.

## House Corporation Program

A special program was introduced at the 51st Leadership School to address issues concerning house corporations.

Representatives from 15 chapter house corporations participated in the program, and their response to the program was favorable. Their meetings covered house replacement planning and implementation, property insurance, developing tax-exempt trusts, accounting and taxes.

A province archon who attended some of the House Corporation Program meetings commented that "Tom Devine [of the Chapter Housing Committee] and the national fraternity's Chapter

*(Continued)*





Housing Committee have done an outstanding job. I hope we can send more representatives from house corporations in our province next year."

### Talent Show

The 51st Leadership School also featured the first annual ΣAE talent show, masterminded by faculty member Bill Dowell, **Birmingham-Southern College '78** (*Alabama Iota*). The show, dubbed "Sig Alph Night Live," featured acts by brothers of all ages, including a skit performed by the Supreme Council.

"Judging by the number of entries in the talent show, and its enthusiastic audience, it was a huge success," Brother Dowell commented. "We had mostly comedy acts this year, but we will present serious talent, too, if we have a talent show again next year."

## Send a Brother to Leadership School.



ΣAE alumni, friends of chapters, and parents can help delegates attend the ΣAE Leadership School by making tax-deductible gifts to the Sigma Alpha Epsilon Foundation.

Each brother who attends the school must pay a tuition fee and his

travel expenses, unless donations have been made to offset these costs. The tuition fee has been \$150 the last two years.

Leadership School contributors may designate the chapter or chapters for which their gift is made. Individual recipients of the funds are chosen by the chapter based on need, scholarship and character.

If you wish to help to send a brother to Leadership School, please make your check payable to the "ΣAE Foundation," specifically designating for Leadership School tuition, and send it to the ΣAE Foundation, P.O. Box 1856, Evanston, IL 60202.

## LEADERSHIP SCHOOL SPEAKER T. BOONE PICKENS:

### 'You don't have to cheat to win'

Guest speaker for the 51st Leadership School was the infamous takeover entrepreneur of the oil industry, T. Boone Pickens, **Oklahoma State University '51** (*Mu*), president and chief executive officer of Mesa Petroleum Company.

Pickens, who has spoken to 25,000 college students nationwide in the last two years, addressed the question, "How can I go out and do what you've (Pickens) done?" His advice focused on the following points:

- Analyze well; assess risk carefully. There is no substitute for good research.
- Be objective. Don't get emotionally involved when making decisions involving risk.
- Once you've analyzed well, don't be afraid to act. Make a decision. Indecision is a disease, and it can ruin a good career.
- Play by the rules. Remember what motivates people: Profit is the driver in the case of business. Make money honestly. You don't have to cheat to win.
- Do things in moderation. It's true what they say about a healthy body — it makes a healthy mind. Whatever it is, do it in moderation. Success doesn't mean all work and no play.
- No matter how successful you become in business, don't ever forget what it's like to eat hamburgers. Don't get on a sirloin steak diet and believe you can never go back. If you're going to be aggressive in business, you're going to have some losers.

"I promise you that if you stay fit, work hard and play by the rules, that you'll have fun and you'll beat the hell out of the competition," Brother Pickens concluded.

Pickens answered several questions from the alumni and undergraduates in the audience. He told the brothers he likes what he sees on college campuses today, describing a "willingness to work, and a revival of the entrepreneurial spirit."

"Change is coming like a tidal wave," he said, referring to what he calls good ole' boys left over from another era: "Professional managers who are more concerned with keeping their jobs than working for the shareholders." Brother Pickens cited the alarming number of top corporate executives who own little, if any, of their company's stock, and therefore don't have a stake in the success of the corporation.

"The entrepreneurs are replacing the good ole' boys in modern corporate America, and that's good. That's good for you, because young people love change; because change means opportunity. Old people want the status quo; they're afraid of change. We're going to see the good ole' boys moved out of corporate America and that's going to make this country a lot more competitive.

"When I look out over this group right here," Pickens said, "I see another room full of leaders for this country. I like what I see, and I'm comfortable with what I see.

"The future of this country is not with some 58-year-old," he said, referring to himself, "it's with you people right here."



Pickens

Martin Huffman photo

Another room full of leaders for this country.



## Scott McCary Wins \$3,500 Jones-Laurence Scholastic Award

**W**ILLIAM SCOTT McCARY, A MEMBER of Alabama Iota at **Birmingham-Southern College**, has been named the recipient of the ΣAE Foundation's top scholarship award, The Jones-Laurence Award for Scholastic Achievement. As the winner of the award, Scott received a cash prize of \$3,500.

Currently a medical student at the **University of Alabama**, Brother McCary graduated last spring with a degree in chemistry. Going into his last semester at Birmingham-Southern, he had maintained a 3.96 grade point average out of a possible 4.0. Scott held several offices in his chapter; he had been a leader in many campus organizations; he is a member of Mortar Board, Omicron Delta Kappa, Phi Beta Kappa, a pre-med honorary society and other honoraries; he was active in intramural sports; and he worked as an intern to a local surgeon during the school year.

But it was not just an impressive list of accomplishments and several recommendations from administrators that set apart Scott McCary's application for the Jones-Laurence scholastic award; it was his essay on academics as the foundation of a true education.

"I believe that in order to get a well-rounded education one must participate in a mixture of activities in college. First and foremost, though, one should strive to build a strong academic base from which they can better pursue the many other valuable experiences of college life," he wrote.

He cited students who use college to "get the most out of their new-found personal freedom . . . [arguing] that they are receiving an 'education' through their experiences in extracurricular activities."

"This 'education' is a shallow one and in the long run unfulfilling, failing to produce the satisfaction and benefits of an education built upon academic excellence."

**A**CADEMICS, HE EXPLAINED, TEACH "... the process of learning to think critically and logically, and to explore what is important."



**McCary: Top scholar**

*'Academics teach the process of thinking critically and logically.'*

"I believe that the insight we gain from the classroom is an invaluable tool in all aspects of the fraternity," he wrote.

"Perhaps the most beneficial thing to the fraternity is the characteristics that the members acquire in their pursuit of academic excellence — desire, discipline and persistence. These characteristics are universal; if one shows them in the classroom, they will surely spill over into all other areas of his life," he explained.

### Runners-Up

Brothers John F. Mitchell of New York Alpha (**Cornell**) and Tim Beals of Washington Gamma (**Puget Sound**) were named runners-up for the Jones-Laurence Award for Scholastic Excellence. They each received a cash prize of \$500.

## We're loaning money to deserving brothers.

The ΣAE Foundation can loan up to \$3,000 to deserving ΣAE juniors, seniors or graduate students who apply for the student loan program. Eligible applicants may borrow up to \$1,500 during an academic year. For more information, contact Roberta Nelson, student loan administrator at the

Sigma Alpha Epsilon Foundation office,  
P.O. Box 1856, Evanston, IL 60204.

**Spring loan applications must be submitted before  
February 15, 1987.**



# The 36-year-old head physician of the U.S. Olympic Team was a leader even before Cal Delta pledged him.

At age 16, Jim Puffer had been elected student body president at El Segundo High School.

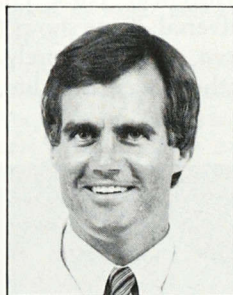
But Jim was able to enrich his leadership skills with the experiences he gained as Eminent Archon of California Delta at UCLA, and as the chapter's delegate to the ΣAE Leadership School.

"The fraternity provided the opportunity for me to mature as a person as well as to learn the importance of consensus and communication in leading one's peers," Jim says.

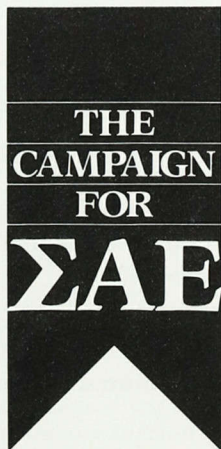
Today Jim is chief of the Family Medicine Division at the UCLA School of Medicine. He is a noted sports medicine expert and he's a leader in Drug Control and Abuse programs for the NCAA and the U.S. Olympic Committee.



*"ΣAE is an institution which has provided countless opportunities for thousands of young men during their college education. It has provided support, encouragement and motivation during an important transitional period in our lives, and we should seek to sustain this essential experience through our donations as well as our commitment to the principles of fraternity."*



**James C. Puffer, M.D.**  
California Delta '72  
Head Physician, U.S. Olympic Team



*The Path to Leadership*

THE CAMPAIGN FOR ΣAE seeks \$7.5 million over a three-year period to reinforce existing strengths by endowing leadership development and educational and financial aid programs for undergraduates. The fundamental commitments of The Campaign are to preserve and perpetuate the fraternity's rich heritage of leadership, scholarship and fellowship.



## West Florida Chapter Honored for Community Service

**T**HE FLORIDA SIGMA CHAPTER AT West Florida was named the winner of the Sigma Alpha Epsilon Foundation Award for Excellence in Community Relations at the 51st Leadership School in August. Past Eminent Supreme Archon Joseph Mancini presented the award to the chapter's delegates and their Chapter Advisor, James Bell, Emory '31 (*Georgia Epsilon*).

The Award for Excellence in Community Relations was originally funded by the ΣAE Leadership Foundation, which Past ESA Mancini established. When Brother Mancini announced the winning chapter, he described the award saying, "This award was established to recognize the chapters that contribute their time and energy to those in need.

"Brothers of ΣAE have . . . historically endeavored to improve the lives of those less fortunate than themselves. The Award for Excellence in Community Relations honors the chapter which most excels in this aspect of fraternity life."

As the winner of this award the chapter received two grants of \$500 each to the charities of their choice. They chose the Cystic Fibrosis Foundation and the Muscular Dystrophy Association to benefit from the grants.



Florida Sigma D.J.s provide student entertainment.

The brothers of Florida Sigma participated in campus and community events and philanthropies in many ways. They raised money for non-profit health agencies by riding in bike-a-thons and dancing in a dance marathon. They volunteered their time as ushers, ballot box collectors, Santa and Christmas carollers and Special Olympics coaches, referees and supporters.

The chapter arranged and promoted three bloodmobile visits to the campus, and hosted and provided entertainment for the freshman convocation, the freshman cookout and the College of Business orientation. In the midst of all this activity, the brothers published and mailed five newsletters during the school year to their alumni and local friends, further enhancing their community relations.

### **WANTED: Brothers Who Are Tops in Their Fields**

Each year, the fraternity honors several outstanding alumni brothers with **The Highest Effort Award**. These alumni are recognized for their nationally significant professional accomplishments and exemplification of the ideals of the fraternity. Recipients of the T.H.E. Award are selected from *your* nominations.

A T.H.E. Award candidate must have made a significant contribution to society through his professional life; he must exemplify the ideals of ΣAE and The True Gentleman; and his service within his profession and to mankind should represent a model for brothers to follow.

To nominate an outstanding ΣAE, send a nomination that includes information on the nominee's involvement with his profession and related work, and any personal information you have that would further qualify him for this honor. Nominations must be received by December 15, 1986. Address them to: John Edwards, The Highest Effort Award, Sigma Alpha Epsilon National Fraternity, P.O. Box 1856, Evanston, IL 60204. Please include name, address and telephone number of person submitting the nomination.

### **Are you concerned about your brothers?**

### **Alcohol and drug abuse present a real life problem.**

If you are concerned about these issues on your campus or in your chapter, help is available from the Sigma Alpha Epsilon Foundation.

Dynamic speakers and effective *hands-on* workshop leaders can work with you and your brothers, or address the entire campus. For more information, contact Tom Hume, director of foundation programs at the ΣAE Foundation office.

P.O. Box 1856, Evanston, IL 60204.

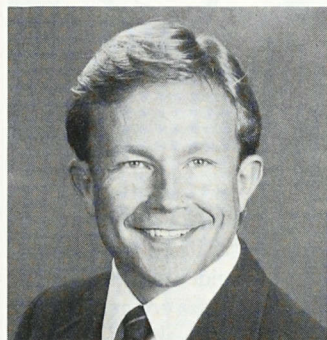


## New Founder Members of $\Sigma$ AE Foundation Named

By Cindy Thorson

Elsewhere in this issue of *The Record* are articles about some of the many programs sponsored by the Sigma Alpha Epsilon Foundation. These programs would not be possible without the generosity of the many brothers who support the foundation.

A Founder Member has contributed, or has had contributed in his name, \$1,000 or more in total giving to the foundation. New Founder Members are featured in *The Record* as their biographies are received at the national fraternity office.



**Edwin Sargent, Jr.**

Edwin Earl Sargent, Jr., **Texas Tech '68 (Alpha)**, who earned his B.A. in Government/History, is Founder Member 1215 of the Sigma Alpha Epsilon Foundation.

Sargent is currently a regional sales manager in Houston for Arc-Com Fabrics, Inc. He served in the Peace Corps for two years in Micronesia and was an instructor for Raytheon in Jeddah, Saudi Arabia, for two years. Sargent was also the personnel and public coordinator for Gulf Coast Waste Disposal Authority in Houston for five years.

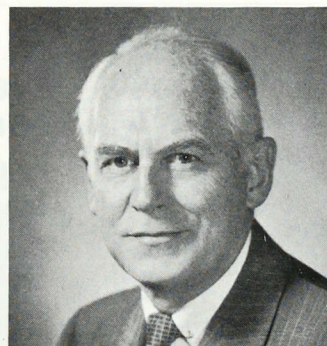


**Minor Watterson**

**Minor Watterson**

Minor H. Watterson, **Michigan State '30 (Gamma)**, of Largo, Florida, has been designated Founder Member 1179 of the Sigma Alpha Epsilon Foundation.

Watterson attended the University of Virginia School of Banking, and eventually went on to serve the U.S. Naval Forces during World War II. He was vice president of Norwest Bank in Saint Paul, Minnesota, for 18 years, and retired in 1971. Watterson and his first wife, Anne, had a son and daughter. He became a widower in 1969, and has since remarried.

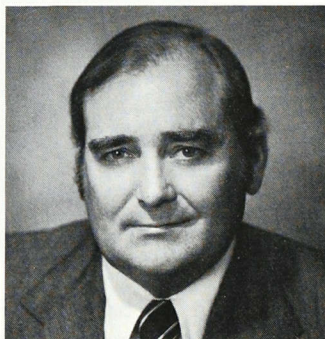


**Charles Kothe**

Charles A. Kothe, Jr., **Bucknell '34 (Pennsylvania Zeta)**, lawyer and special development consultant, at the University of Tulsa, has been named Founder Member 823 of the Sigma Alpha Epsilon Foundation.

Kothe was the founding dean of the O.W. Coburn School of Law, Oral Roberts University,

and is a national authority on labor relations. He has served on several committees in the Department of Labor, and is currently a consultant to the Equal Employment Opportunity Commission. He is listed in *Who's Who in the World* and *Who's Who in the United States*.



**William Beavers**

William P. Beavers, **Missouri '50 (Alpha)**, president of Biddle Company, a manufacturer of sealants and adhesives for the building industry, is Founder Member 1230 of the Sigma Alpha Epsilon Foundation.

After serving the Army Air Force (1944-46), Beavers attended the  $\Sigma$ AE Leadership School in 1947. He is now a board member of Missouri Alpha House Corporation. Beavers is a past director of the Brentwood Bank and is a member of several community organizations. He and his wife, Jane Anne, live in Saint Louis, and have one daughter.

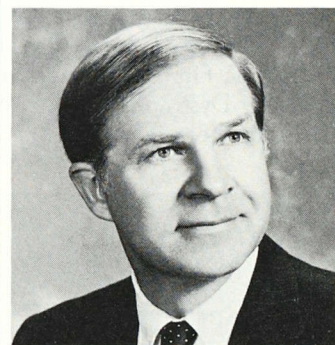


**Kenneth Spalding**

**Kenneth Spalding**

Kenneth L. Spalding, **Colorado School of Mines '60 (Lambda)**, who received his degree in Petroleum Refining Engineering, has been named Founder Member 1173 of the Sigma Alpha Epsilon Foundation.

Spalding has worked for Shell Oil Company for 25 years, and is manager of aviation sales. In his job, he has been involved with exploration, manufacturing, commercial marketing, governmental affairs, research and development. Spalding and his wife, Marcy, live in Houston.



**Thomas Seitz**

Thomas A. Seitz, **Ohio State '63 (Theta)**, president of Seitz and George Office Equipment Company, has been named Founder Member 1208 of the Sigma Alpha Epsilon Foundation.

In addition to being with his company for 23 years, Seitz is the chairman of the board of the Dayton/Miami Valley Better Business Bureau. He is a past Archon of Province Delta, and is presently Province Advisor. Seitz also served as Eminent Archon of his chapter. He and his wife, Sandy, have two children and live in Dayton.



## Samuel Lee, II

Samuel J. Lee, II, **Texas '64 (Rho)**, an attorney, is Founder Member 1235 of the Sigma Alpha Epsilon Foundation.

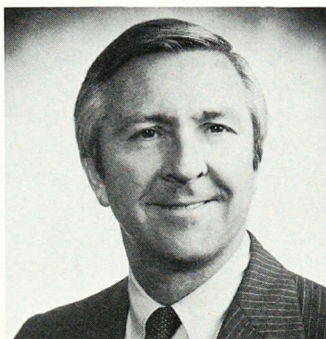
Lee is a life member in the Reserve Officers Association of the U.S. Navy. He is a member of the American Association of Composers, Authors and Publishers, The Association of Trial Lawyers of America, Screen Actors Guild and Fraternal Order of Eagles. Lee has one daughter and lives in Angleton, Texas.



## Otis R. Henry

Otis R. Henry, **Oklahoma '40 (Kappa)**, of Warwick, Bermuda, has been named Founder Member 1223 of the Sigma Alpha Epsilon Foundation.

Henry is a partner of West-Henry Development, an investment and development company. He is retired from the U.S. Defense Department, where he served for 36 years. Henry is a past president of Rotary Club and the Bermuda Personnel Association. He is a two-time recipient of the Meritorious Civilian Service Award. Henry and his wife, Barbara, have two sons and four grandchildren.



George Yackey

## George Yackey

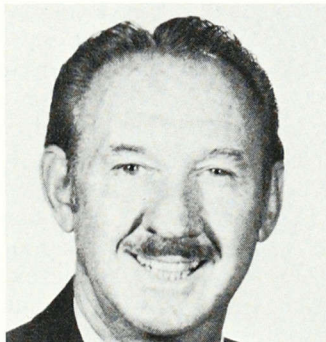
George A. Yackey, **Cal State at Long Beach '63 (Lambda)**, stockbroker and first vice president of Bateman Eichler, Hill Richards of Anaheim, California is Founder Member 1218 of the Sigma Alpha Epsilon Foundation.

Besides being in the securities business for the past 18 years, Yackey serves on the Board of Directors of the Anaheim Chamber of Commerce, as well as the Anaheim YMCA. He served as Eminent Archon of California Lambda in the spring of 1963. Yackey and his wife, Allayne, have two children.

## Rea Chamberlain

E. Rea Chamberlain, **Oklahoma State '34 (Mu)**, is Founder Member 1036 of the Sigma Alpha Epsilon Foundation.

Chamberlain, an attorney with Chiles, Lewis & Royer, Inc., specializes in income, estate and gift law, and probate and corporate law. He served the U.S. Navy as a lieutenant in World War II. He is a member of the American Institute of CPAs and St. Luke's United Methodist church. A resident of Oklahoma City, Chamberlain and his wife, Grace, have two daughters and five grandchildren.



## Franklin Schadrack

Franklin C. Schadrack, **Nevada-Reno '52 (Alpha)**, of Littleton, Colorado, has been designated Founder Member 1250 of the Sigma Alpha Epsilon Foundation.

Before becoming president-owner of Redfield Rifle Scopes, Inc., Schadrack was vice president of marketing with Talon

## A. Robert Towers

**Editor's Note:** Brother A. Robert Towers, 93, was featured in the Summer 1986 issue of *The Record* for memorializing his late grandfather with a generous gift in his grandfather's name to *The Campaign for ΣAE*. The following letter from Brother Towers was received by the ΣAE Foundation office, together with his check for \$1,000, which establishes him as Founder Member 1288.

Thank you for the copies of the summer issue of *The Record* and your inclusion of me in the Georgia Phi Chapter Roll of the Founders.

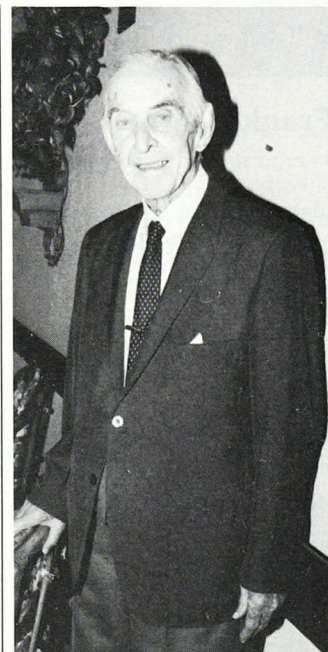
The response to the gift has been wonderful and most pleasing to me for being the giver. I had no idea that it would merit the lead article in *The Record* but am glad that it did for it included the second publication of my grandfather's birthday letter to his son and reaches the generation that I wanted to — the ones that might need financial assistance so as to stay in college and not be a dropout.

To show my appreciation I am enclosing my check for one thousand dollars as a Founder's fee in my behalf.

You did a splendid job of editing and publishing "That is the end of my story."

My best and lasting regard to you and brother Houston.

A. ROBERT TOWERS  
**Georgia Tech '16**  
*Georgia Phi*

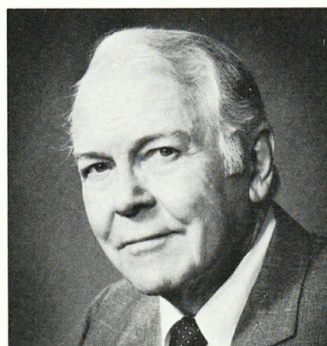


Towers

## John Findlay

John S. Findlay, **Cincinnati '36 (Ohio Epsilon)**, has been named Founder Member 1219 of the Sigma Alpha Epsilon Foundation.

Findlay worked for 31 years as an architect, and retired from his own firm in 1977. He also served in the U.S. Army in World War II. Findlay is a member of the Cincinnati ΣAE Alumni Association and has served as president and board member for over 18 years. He belongs to several engineering and architectural associations, and has won numerous civic awards. Findlay and his wife, Vera, have two children and three grandchildren. His son, Richard, is an alumnus of Ohio Epsilon Chapter, **Cincinnati '69**.



John Findlay

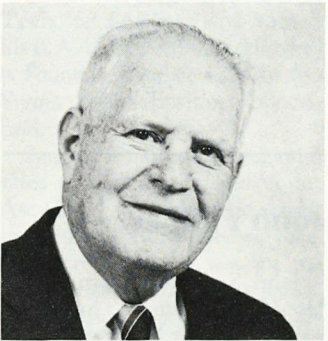




**Frank Crowe**

Frank W. Crowe, M.D., **Idaho '41 (Alpha)**, a retired dermatologist, who received his medical degree from the University of Utah, is Founder Member 1237 of the Sigma Alpha Epsilon Foundation.

Crowe has served as a clinical professor at the Oregon Health Sciences University and the University of Washington Medical School. He belongs to several medical and dermatology societies and associations. Crowe and his wife, Shirley, live in Boise, Idaho. They have 3 children and 3 grandchildren. Their son is Chuck, **Idaho '71 (Alpha)**.



**Richard Strauss**

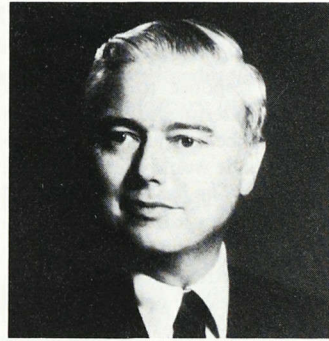
Richard K. Strauss, **Stanford '29 (California Alpha)**, has been named Founder Member 1228 of the Sigma Alpha Epsilon Foundation.

In 1951, Strauss founded Industrial Insulations, Inc., a company which produces high temperature insulation. He now serves as the chairman of the board. In the 1930's, he helped design and construct the Golden Gate Bridge in San Francisco. Strauss was also a Colonel in the U.S. Army. He and his wife, Elizabeth, live in Pasadena.

**James Moran**

James C. Moran, **Carnegie Mellon '67 (Pennsylvania Phi)**, has been designated Founder Member 1174 of the Sigma Alpha Epsilon Foundation.

Moran is vice president of marketing with Pellerin Milnor Corporation, a manufacturer of commercial laundry equipment.



**James Moran**

He received his MBA at the University of New Orleans, and Juris Doctor at Loyola University. He is a member of both the American and Louisiana Bar Associations and the Phi Alpha Delta Legal Fraternity. Moran and his wife, Joanne, live in River Ridge, Louisiana, and have two sons.

**Floyd Sedlmayr, Jr.**

Floyd W. Sedlmayr, Jr., **Beloit '50 (Wisconsin Phi)**, who serves as chairman of the board for Pima Savings and Loan Association of Tucson, Arizona, is Founder Member 1241 of the Sigma Alpha Epsilon Foundation.

Sedlmayr is a member of numerous savings and loan organizations, as well as civic and charity organizations. He has



**Floyd Sedlmayr, Jr.**

been in the savings and loan business for 35 years, and is a graduate key holder from the Graduate School of Savings and Loan at Indiana. He and his wife, Jane, have three children and three grandchildren.

## Letter From a True Big Brother

**Editor's Note:** The following letter was forwarded to the national fraternity office by the author's mother. It was written by a 30-year-old physician, an  $\Sigma$ AE brother, to his youngest brother, who pledged  $\Sigma$ AE over the summer. The brother who wrote the letter has asked to remain anonymous.

Congratulations on becoming a pledge of Sigma Alpha Epsilon!

Looking back to 12 years ago when I was in your position, I remember not knowing what to expect from school, life in the dorms, and being a pledge and meeting literally thousands of new people. I can say with complete confidence that being a pledge in  $\Sigma$ AE was the most important thing that had happened to me up to that point in my life. Its positive aspects on my life are uncountable. Friendships, help with classes, social activities, and now business opportunities have all been made possible by  $\Sigma$ AE.

However, being a pledge and (hopefully) a future member of  $\Sigma$ AE is much more than just a means of social activities. I would encourage you to learn The True Gentleman, understand it, and live it. You and your fellow members of your pledge class have a vast legacy to live up to.  $\Sigma$ AE has over the years at [our school] been a dominant force in student government, intramurals, and academics. Our chapter is one of the two or three largest in the country and  $\Sigma$ AE is the largest fraternity in the country. You will learn that it was members from [our school] who have been some of  $\Sigma$ AE's greatest leaders of the national fraternity.

I would encourage you and your fellow pledges to be leaders, and have high goals. Believe me you can be anything you want if you desire it.

I am sure all of this sounds very corny (much like a graduation speaker). Besides all the serious stuff, the next years of your life (in my opinion) will be the best of your life. Enjoy everything, live everything to the fullest.

I am already looking forward to your initiation next spring.

Fraternally yours,  
Your Brother

For more letters from readers, see "Letters" section.



# Emmett B. Moore: A Memory

**Eminent Supreme Archon, 1949-1951**  
**Montana State '24**  
**Montana Alpha**

By Dr. Glen T. Nygreen, Past ESA  
 Washington '39 (Alpha)

Emmett B. Moore, Montana Alpha '24, joined the Chapter Eternal on August 3, 1986. He was 84 and our oldest living Past Eminent Supreme Archon.

If ever anyone represented the "perfect bond fraternal" it was Emmett B. Moore. He served his fraternity with distinction at every level. He was Eminent Archon of Montana Alpha (**Montana State University**) and left behind him a strong and united chapter which for the next thirty years earned a record of outstanding achievements.

He was Archon of Province Lambda when it covered a huge western area. By diligent application and attention to duty, he built a strong, cohesive province structure.

He served on the Supreme Council during the years of World War II and later as ESA from 1949-51. That the fraternity came through the tumultuous and trying years of war into a period of great growth and strength is attributable in considerable measure to Emmett Moore's careful stewardship and visionary zeal.

For many years he served on the Leadership School faculty and as Assistant Director. He was a major influence in the growth of the fraternity through his chairmanship of the Committee of Extension. Firm in purpose, Emmett was the embodiment of fraternal good will, trusted and admired by everyone.

I first met Emmett one April Sunday morning, under the star's pale light, when he served as the initiating officer for Washington Alpha's large pledge class. I was impressed by the ceremony, so long looked forward to, and especially by the quality and teaching ability of the person who conducted it. We quickly became good friends. His advice enabled me to become more effective as a chapter advisor. His mentorship led to my assuming province office and rising through the ranks. He encouraged me to become Scholarship Commissioner and

advised me as we developed a comprehensive program for the fraternity. At every point he kept before us all the interests and welfare of the fraternity, urging us to strive continuously to reach the goals held forth in the Ritual.

Emmett served as a member of the faculty and for many years as chairman of the Department of Civil Engineering at **Washington State University** in Pullman. He was often called upon by the college to carry special assignments

(continued)



**Emmett B. Moore**

*John O. Moseley recognized the quality of this engineer/educator and kept him close to the Leadership School.*



of trust and importance. In all of these he served with distinction, ever keeping the welfare of the college before his personal interest.

As we look back over life's pathway, each of us recognizes that our way has been made easier and more meaningful by the thoughtfulness and caring of many brothers. Emmett Moore is one such mentor figure whose friendship has meant for many the difference of understanding how what we do affects the efforts of others. John O. Moseley recognized the quality of this engineer/educator and kept him close to the Leadership School. A long succession of ESAs recognized this and leaned upon Emmett for leadership. What finer accolade can be given a departed brother

than to say that in every thing he touched *he made a difference.*

We pray that Mrs. Emmett Moore, a loyal Chi Omega known to all as "Brownie," will take comfort and pride in knowing that we, "his sorrowing and afflicted Brothers," are better individuals because we knew Emmett. Their son, Dr. Emmett B. Moore, Jr., a Washington Beta member, is continuing in the model set by his father. The family stands as a living tribute to the stalwart exemplar of our ideals whom we called "Brother Emmett."

"There, with perfect Bond fraternal,  
'Neath the all-seeing eye eternal,  
Love, our hearts, shall closer bind."

## Rudy Vallee Stage, Radio and Screen Star

By Scott Haggard, Director of Chapter Development

Hubert P. "Rudy" Vallee, **Maine '25** (*Alpha*), star of stage, screen and radio entered the Chapter Eternal July 3. Police reported that he died of a heart attack while watching the Statue of Liberty centennial salute on television. He was 84.

Vallee began his career in the late 1920s after attending the **University of Maine** and **Yale University** when he landed his own radio show on NBC called the "Fleischmann Hour." Rudy and his band, the Connecticut Yankees, soon became a hit on East Coast radio. *Variety* credited him with proving himself as a "smooth emcee and actor equally comfortable with straight lines and comic."

Vallee was probably best known as the megaphone-wielding crooner of the Depression era. He was the first of the crooners, preceding Bing Crosby and Perry Como. He was regarded in the 1930s much the same as Sinatra was in the '40s, Elvis Presley in the '50s and the Beatles in the '60s.

Vallee packed houses across the country with swooning female fans on his night club tours. When he married for the second of four times in 1931, 10,000 devastated female fans besieged him with reproachful telegrams at his honeymoon apartment.

As a matinee idol, Rudy appeared in more than 50 motion pictures. On stage, success came his way when he was acclaimed in "The Revue" and "Jenny Kissed Me."

In the '60s, Vallee staged a comeback and took Broadway by storm in what is his best-known role as J. B. Bigley in "How to Succeed in Business Without Really Trying." In



Rudy Vallee in 1933

1967, he repeated the role in the motion picture of "How to Succeed," winning public enthusiasm for both himself and the film.

As a loyal fraternity man, Rudy was a frequent guest, speaker and entertainer at Sigma Alpha Epsilon functions nationwide for many years. Brother Vallee's first saxophone, and a large portrait of him, remain in the museum of the Levere Memorial Temple in Evanston, Illinois as a tribute to this great entertainer and brother.

For more on Brother Vallee, see "Letters" section in this issue of *The Record*.

## John D. Jaspers, South Dakota Theta '86

John D. Jaspers, a May, 1986 graduate of **South Dakota State** and immediate past Eminent Archon of South Dakota Theta, died in July following an accident with a farm machine.

Brother Jaspers had been employed as assistant manager of the Pride Seed Corn Facility, a division of Northrup-King, in Wisconsin. He died after a corn detasseling machine he was operating tipped and pinned him.

John served his chapter in several offices and was an active leader on campus, belonging to several academic and leadership honoraries. He received numerous awards and scholarships as a student at SDSU.

South Dakota Theta has established a scholarship endowment fund in John's name. Memorials for the fund may be made to the John D. Jaspers Memorial Scholarship Endowment for ΣAE, c/o Greater State Fund, Tompkins Alumni Center, SDSU, Brookings, SD 57007.

## Bob Wood, Former CBS President

Robert Dennis Wood, **Southern California '49** (*Gamma*), died in May in Santa Monica, California, following a massive heart attack. He was 61.

A former Eminent Archon at Cal Gamma, Wood rose to the presidency of CBS in 1969 and held the position until 1976. He is credited with replacing what the *Los Angeles Times* called "corn-fed" comedies with controversial and thoughtful programming such as "MASH" and "The Mary Tyler Moore Show."

Brother William E. Krupp, Jr., Cal Gamma '52, wrote that many of the brothers of Wood's era attended the memorial service. "I thought it was best said by Don Rickles of TV and Las Vegas fame, 'He [Wood] always cared and thought of others, they really came before himself.'"

## E. Smythe Gambrell, Former ABA Chief

E. Smythe Gambrell, **Harvard '22** (*Massachusetts Gamma*), a past president of the American Bar Association, died in July in his home in Atlanta, Georgia. He was 90.

Brother Gambrell was a longtime Eastern Airlines attorney and founder of the Atlanta Legal Aid Society. A successful investor, he made gifts of \$1 million and \$5 million to **Emory University** and a hall bearing his name at the Lamar School of Law, respectively. He was a lecturer to Emory law students for 18 years.

Gambrell earned his law degree from Harvard in 1922, and was a past president of the Harvard Club of Atlanta. He received an honorary doctorate of law from Emory in 1964.



# OFFICIAL

**SIGMA ALPHA EPSILON SPORTSWEAR AND GIFTS**

by

IHLING BROS. EVERARD CO.







## FRONT COVER

Fleece wear by Soffe or equal. 50/50 poly-cotton blend for comfort, durability and easy care. Special purple and gold two-color letters are tackle twill material securely applied into the garments with fine embroidery stitching. Four inch letters on sweat shirts and two inch letters on sweat pants. Made in U.S.A.

Adult sizes: S, M, L, XL

Sweat shirt, crew-neck, long sleeve, 4" letters

SAE11N Navy Blue, each. . . . . \$18.00

SAE11W White, each. . . . . \$18.00

Sweat shirt with hood, long sleeve, 4" letters

SAE12N Navy Blue, each. . . . . \$22.50

SAE12W White, each. . . . . \$22.50

Sweat pants, elastic waist with draw cord, elastic ankles, 2" letters

SAE13N Navy blue, each. . . . . \$18.50

SAE13W, each. . . . . \$18.50

Athletic shorts are by Soffee, or equal, high quality. A blend of 65% cotton for comfort and 35% nylon for durability and easy care. The fraternity letters are one inch high in solid embroidery. Made in U.S.A.

Adult sizes: S, M, L, XL

SAE15W White, with purple letters, each. . . . . \$ 9.75

SAE15N Navy, with golden letters, each. . . . . \$ 9.75

**OUTSIDE OF MICHIGAN  
PHONE TOLL FREE  
1-800-828-3662  
MON.-FRI. 8 TO 5  
(EASTERN TIME)**

POLO SHIRT, or GOLF SHIRT in classic pique knit, with ribbed fashion collar and ribbed cuff sleeve, 2-button placket, by Hanes or equal. All cotton. Colorful coat-of-arms embroidered into breast. We will ship white unless you specify light blue or yellow. Made in U.S.A.

Adult sizes: S, M, L, XL

SAE21 each. . . . . \$19.75

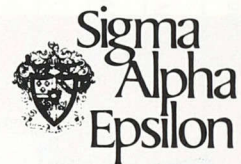
RUNNING SHORTS, by Soffe. Ultra-light nylon tricot with inner brief, hidden pocket, elastic waist, and vent leg. Colorful coat-of-arms embroidered into left leg. Navy blue. Made in U.S.A.

Adult sizes: M, L, XL

SAE22 each. . . . . \$10.50







## MISCELLANEOUS TRADITIONAL ITEMS

SAE303 Name Tags (100 in pkg)..... \$ 7.00

## STATIONERY

SAE304 Set of 100 white letterhead and envelopes  
8½"x11"..... 12.50

SAE305 Set of 500 white letterhead and envelopes  
8½"x11"..... 55.00

SAE306 Set of 100 ivory letterhead and envelopes  
7¼"x10½"..... 15.00

SAE307 Set of 500 ivory letterhead and envelopes  
7¼"x10½"..... 65.00

## DINING ACCESSORIES

SAE310 Napkins (50 in pkg)..... 3.50

SAE312 Place Mats (100 in pkg)..... 6.00

SAE313 Plastic Tumblers (100 in pkg)..... 14.00

SAE314 Cocktail Napkins (300 in pkg)..... 7.00

Dear Brother:

We are, here, presenting to you this year's official Sigma Alpha Epsilon clothing and gift line. These are items you will be proud to wear and use.

The lines of merchandise offered are well known and top quality. The embroidery and the sewing of the Greek letters will be done by the skilled craftsmen in Kalamazoo.

This is a joint venture with Ihling Bros. Everard Co. of Kalamazoo, Michigan. This firm has been in business since 1869. The company has been managed by fraternity men for over sixty-five years. That's two generations, with the third learning the business. We have worked with them for eight decades and know the quality of their work and their integrity to be above reproach.

This year working with the Ihlings, we are trying to anticipate the demand and be ready for prompt shipment. You can have confidence in the guarantee described below. But, do remember these are very specialized items, strong demands cause delay. It will be wise to anticipate extra delivery time, and do allow two weeks for transportation.

Fraternally,

Ken Tracey  
Eminent Supreme Recorder

The Sigma Alpha Epsilon coat-of-arms and other symbols of the fraternity are registered marks and may be reproduced only with permission of Sigma Alpha Epsilon Fraternity.

**IHLING BROS. EVERARD CO.**

2022 FULFORD STREET / KALAMAZOO, MICHIGAN 49001-4090

## GUARANTEE

Every item is sold with the understanding that it is exactly as represented, that it is of quality equal to or exceeding your expectations. Your satisfaction is guaranteed. Any item may be returned against a full money back guarantee within fifteen days of date of purchase. Any item showing defects of workmanship may be returned for replacement or refund within thirty days.

## TERMS

We will ship to individuals with the order charged to Visa or MasterCard, or with your check accompanying the order. On each order, please, add a \$3.00 shipping and handling charge. Prices are quoted in U.S. Funds.





## OFFICIAL TIES

A fine quality navy blue tie with miniature coat-of-arms woven throughout.

SAE48 60% Silk . . . . . \$24.00

Popular new SAE design of repeated lion and narrow stripes.

SAE49 100% Silk . . . . . \$26.50

Shirts in oxford-cloth button-down style by Enro, Van Heusen, Aetna, or similar high quality, in both white and blue. The EASY CARE BLEND of 60% cotton/40% polyester launders beautifully with minimum effort and stays fresh all day. The 100% cotton is offered for the traditionalist. Made in U.S.A.

Men's sizes:

Neck	15	15½	16	16½	17
Sleeve	32,33	32,33,34	33,34,35	33,34,35	34,35

Other sizes special order

SHORT-SLEEVE SPORT AND DRESS SHIRT with coat-of-arms embroidered over pocket. EASY CARE BLEND.

SAW41W White, each. . . . . \$21.00

SAE41B Blue, each. . . . . \$21.00

COAT-OF-ARMS embroidered over pocket, long sleeve, EASY CARE BLEND.

SAE42W White, each. . . . . \$24.00

SAE42B Blue, each. . . . . \$24.00

COAT-OF-ARMS embroidered over pocket, long sleeve, 100% COTTON.

SAE43W White, each. . . . . \$24.00

SAE42B Blue, each. . . . . \$24.00

LETTERED ON COLLAR, either dark blue on light blue shirt, or grey on white. Long sleeve, EASY CARE BLEND.

SAE44W White, each. . . . . \$24.00

SAE44B Blue, each. . . . . \$24.00

LETTERED ON COLLAR, either dark blue on light blue shirt, or grey on white, long sleeve, 100% COTTON.

SAE45W White, each. . . . . \$29.50

SAE45B Blue, each. . . . . \$29.50

LETTERED ON CUFF, either dark blue on light blue shirt, or grey on white. Long sleeve, EASY CARE BLEND.

SAE46W White, each. . . . . \$24.00

SAE46B Blue, each. . . . . \$24.00

LETTERED ON CUFF, either dark blue on light blue shirt, or grey on white. Long sleeve, 100% COTTON.

SAE47W White, each. . . . . \$29.50

SAE47B Blue, each. . . . . \$29.50



## COUNTED CROSS-STITCH KIT

Do-it-yourself kit includes 15"x17" white #14 Aida cloth, D.M.C. floss, needle, and graph to complete, plus alphabet to personalize. Coat-of-arms is 8½"x10". (Frame is not included.)

SAE410 Cross-Stitch Kit, each. . . . . \$18.00

We also have available a limited quantity of cross-stitch kits from Headquarters inventory with printed pattern. Complete with floss and instructions.

SAE411 Needlepoint Kit. . . . . \$22.00







To make envelope  
4th step is to fold this  
end down on this shaded  
line - to form flap.



To make envelope  
4th step is to fold this  
end down on this shaded  
line - to form flap.



FROM:

\_\_\_\_\_  
\_\_\_\_\_  
\_\_\_\_\_

PLACE  
STAMP  
HERE

Place check or  
money order  
inside these  
flaps.



Place check or  
money order  
inside these  
flaps.



**IHLING BROS. EVERARD CO.**

Sigma Alpha Epsilon  
2022 Fulford  
Kalamazoo, MI 49001-4090

To make envelope  
3rd step is to  
fold this end up  
on this shaded line.



To make envelope  
3rd step is to  
fold this end up  
on this shaded line.







### SWEATERS

These sweaters are from the well known Woolrich line. They are 100% wool and knitted with a crew neck in British Hong Kong. The coat-of-arms is embroidered into the left breast in full color.

MEN'S SWEATERS are in Navy or Grey (illustrated).

Men's sizes: S, M, L, XL, 2XL

SAE71 each. . . . . \$31.00

### CHAMOIS FLANNEL SHIRTS

Top of the Woolrich line, a men's sport shirt of all-cotton extra-heavy, extra-soft "chamois cloth" flannel. This shirt is of a high quality like the famous mail-order chamois shirts used to be. The coat-of-arms in full color is embroidered into the body of the shirt above the left pocket. Machine washable. Available in Ecru (illustrated), Hunter's Red, or Navy. Made in U.S.A.

Men's sizes: M, L, XL

(2XL, 3XL, 4XL on special order)

SAE72 each. . . . . \$29.00

### COFFEE MUGS

Coffee mugs of fired white ceramic, with coat-of-arms in full color. Decorative and useful, at home or in the office. Dishwasher safe. 12 oz. size. Immediate shipment.

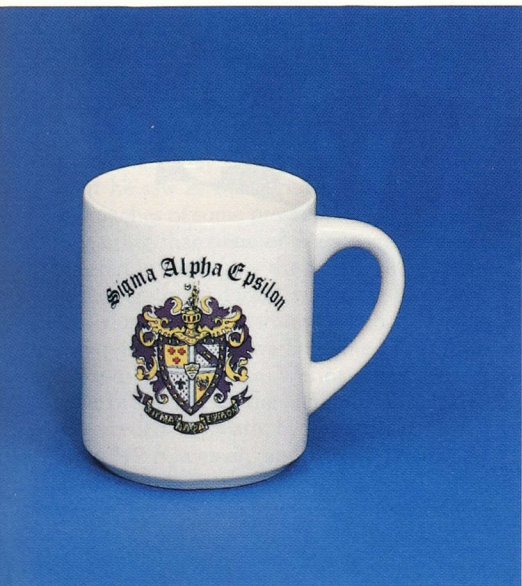
SAE76 each. . . . . \$ 5.50

SAE77 Set of four, per set. . . . . \$19.00

The traditional personal fraternity mug is also available in fired white ceramic. Appropriate decoration for college room, home, or office. The large S.A.E. Coat-of-Arms in full color splits the class year. School name printed on the lip. Golden metallic stripes top and bottom. Personalized on back with up to seven letters. Mugs are special order items, allow eight weeks.

SAE78 Rugged, 24 oz. size. . . . . \$16.00

SAE79 Traditional, 16 oz. size. . . . . \$13.75



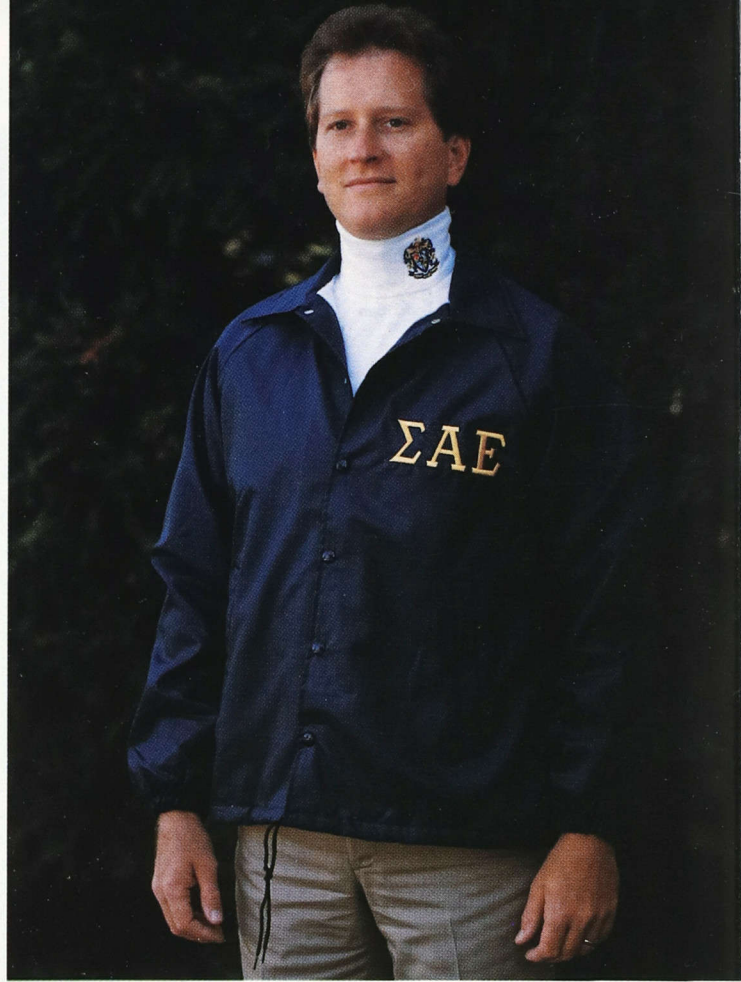


For new legacies and sweethearts, infant, turtleneck shirt. Knitted easy care blend of 50/50 polyester and cotton. Embroidered with coat-of-arms and either "sweetheart" or "legacy" on an arc above. Made in U.S.A.

Infant sizes: 12 mos., 18 mos., 24 mos.

SAE84 "Sweetheart" shirt, each..... \$ 9.00

SAE85 "Legacy" shirt, each..... \$ 9.00



Cool weather jacket of Rugged Nylon Oxford, with polyester lining, heavy duty snap front with drawcord bottom. Golden rayon Fraternity letters in solid embroidery, two inches high. Made in U.S.A.

Sizes: S, M, L, XL

SAE81N Navy Blue (illustrated), each..... \$26.00

SAE81B Columbia Blue, each..... \$26.00

Turtleneck pullover, with the small coat-of-arms embroidered into the collar. Made by Woolrich of white all-cotton interlock knit with Spandex reinforced collar and cuffs. Made in U.S.A.

Men's sizes: S, M, L, XL

SAE82, each..... \$19.00



# SAE PRIDE

IHLING BROS. EVERARD CO.

Kalamazoo, Michigan  
SERVING SAE SINCE 1909



## Pete Noonan, 'Pensacola's Own'

The ushering into the Chapter Eternal of William J. "Pete" Noonan, **Illinois '11** (*Beta*), was sadly noted by alumni brothers in the Pensacola, Florida Area Alumni Association.

"Pete was initiated at Illinois Beta, and graduated from Notre Dame, but was surely one of Pensacola's own brothers," wrote Sam Waite, president of the Pensacola association.

A civil engineer, Brother Noonan owned a construction company he started in 1927. He was a past president of the Pensacola area Chamber of Commerce and dedicated time and energy to many philanthropic and fraternal organizations.

A Pensacola newspaper read, "he was a diminutive man, with a warm and friendly presence, active for nearly nine decades, known to Pensacolans as a giant among West Florida's road-construction pioneers."



**Noonan: Warm, friendly**

## Charles Wennerstrum, Nuremberg Presiding Judge

Charles Frederick Wennerstrum, **Drake '12** (*Iowa Delta*), a former Iowa Supreme Court judge and a judge in the Nuremberg trials of Nazi leaders in 1947 and '48, died in June at age 96.

Brother Wennerstrum presided over and sharply criticized some of the Nuremberg war crime trials after World War II. He "assailed what he saw as the nationalistic and biased approaches of some prosecutors to the trials, suggesting that some of them were more interested in furthering their own careers than in seeing justice done," wrote the *New York Times* upon Wennerstrum's death.

Serving on the Iowa Supreme Court from 1941 to 1958, Judge Wennerstrum took a leave of absence for the Nuremberg trials. He is preceded in death by sons Scott, **Iowa State '49** (*Gamma*), and Roger, **Drake '50** (*Iowa Delta*).

## John Dalton, Former Virginia Governor



**Dalton: Took stands**

John Nichols Dalton, **William & Mary '53** (*Virginia Kappa*), died in July in Washington, DC of a form of lung cancer. He was 55.

Dalton, a nonsmoker, served as Virginia's governor from 1978 to 1982, following a landslide election victory in 1977. He learned in 1983 that he had cancer, and began a lengthy fight with the disease.

A Richmond newspaper editor wrote, "... as a popular Governor, John Dalton took stands. He led."

Noted for his efforts to improve the state's economy, he kept promises to "cut the cost of government and improve its efficiency." He made solid contributions in the state's transportation, corrections and education systems.

"His life was short," the Richmond editorial reads, "far too short, but it was lived fully, with purpose and intelligence — and with success that was both abundant and deserved."

## Kevin H. McDonnell, Missouri Alpha '84

By Frank Drinkhouse, Missouri Alpha '84

You may have known him, perhaps not, but we all have known and lost people like Kevin — a person who opens our awareness of life and leaves us enriched. Kevin McDonnell has passed away now, though still a brother beloved. I was asked by his family to share Kevin's beauty and joy with readers.

While at the U of Mo, Kevin was a tough house manager and a strict warden. ... He was a true fighter, and was strong until his twilight moments. He was calm and strong in mind and never lost faith during his illness. I would like to think that Kevin was ready to go and that he had his affairs in order. Although he spent a disappointingly short time with us

all, he had some mighty fine times being a brother in Sigma Alpha Epsilon.

For those of you who didn't know Brother McDonnell, hopefully you have known others in your life like him — a special person who passes from you and really leaves you changed. Brother Kevin Hein McDonnell passed to the Chapter Eternal on July 23, 1986 after a bout with cancer. He was fighting to the last moment, and that's the way I'll remember him. "Phi Alpha, Kevin," from the Brothers of Missouri Alpha. "We'll miss you, Brother."

## NOTICE OF DECEASED BROTHER

**Please give complete information and send this form to Sigma Alpha Epsilon National Fraternity, P.O. Box 1856, Evanston, IL 60204.**

**Deceased Brother** \_\_\_\_\_ **Chapter** \_\_\_\_\_

**Address** \_\_\_\_\_

**Date and Place of Death** \_\_\_\_\_

**Reported By** \_\_\_\_\_ **Chapter** \_\_\_\_\_

**Address** \_\_\_\_\_

**Telephone Number(s)** \_\_\_\_\_ **Today's Date** \_\_\_\_\_



## Jim Trueman, Indy 500 Car Owner

Last June, eleven days after tasting the sweet victory of owning the winning car in the Indianapolis 500, Columbus, Ohio businessman Jim Trueman, **Ohio State '60 (Theta)**, died of cancer at his home.

Brother Trueman, 51, had been battling the disease for more than two years. After the rigors of the long, exciting day when Bobby Rahal, driver of Jim's car, triumphed at the Indy 500, Jim's condition deteriorated rapidly. Calling the race "one of the highlights of his career," he was unable to attend Columbus' celebratory parade and ceremony honoring Rahal and the TrueSports Co. race car team, which Brother Trueman founded five years ago.

A race car driver himself, Jim competed beginning in 1962. He had 125 victories. He owned and developed a race car track in Lexington, Ohio and in 1972 founded the "no frills motels" Red Roof Inns. The chain today includes 150 inns with 4,500 employees in 30 states.

## Edward Q. Perry, Texas Publisher

Edward Q. Perry, **Kansas State '15 (Beta)**, former publisher of the *Plainview Daily Herald*, died last spring in San Antonio at age 91.

Brother Perry, according to his daughter, "was all his life a proud Sig Alph . . . and even more proud when his grandson Keith Perry Jordan became an  $\Sigma$ AE at **Southern Methodist University**."



## IN MEMORIAM

**"The best use of life is to invest it in something which will outlast life."**

—William James

Contributions "in honor of" or "in memory of" a late brother may be sent to Kenneth D. Tracey, executive director, Sigma Alpha Epsilon Foundation, P.O. Box 1856, Evanston, IL 60204. Additional information on establishing endowments for scholarships or Leadership School tuition, making your will, or other means of planned giving may be obtained at the same address, or by calling 312-475-1856.

**Recent gifts to the  $\Sigma$ AE Foundation have been received in memory of:**

**Paul K. Ashby** by Franklin S. Bard

**William E. Ashby**

by Mrs. William E. Ashby

**Albert M. Austin**

by Marshall M. Austin

**Walter W. Bishop** by Earl R. Bishop

**James E. Blue** by George N. Steinhauer

**Lindley F. Bothwell** by

Tracey Stoll

Kenneth D. Tracey

**David M. Bramble**

by Don R. Atkinson

**William H. Chambers**

by R. Warde Chambers

**Eugene C. Daniel**

by Mrs. Eugene C. Daniel

**M. Berry Grant** by Edward N. Dietler

**Wilson B. Groome**

by Jackson C. Thode

**Dr. Robert P. Haring**

by Mrs. Robert P. Haring

**Harold S. Hays**

by Porter P. Underwood

**Donald W. Jewett**

by Mrs. Donald W. Jewett

**Glenn R. Johnson**

by Robert S. Johnson

**Daniel L. Luddington**

by Mrs. Daniel L. Luddington

**Emmett B. Moore** by

Kenneth D. Tracey

Porter Underwood

**William J. Noonan**

by Pensacola Area Alumni Assoc.

**Edward Q. Perry**

by Col. & Mrs. Robert J. Standley

**Yancy L. Russell**

by Mrs. Yancy L. Russell

**Capt. Cecil G. Sellers**

by Jackson C. Thode

**Frederic Stevens Jr.**

by Mrs. Frederic Stevens Jr.

## Chapter Listings

*This list is published in each issue of The Record to identify brothers who have joined the  $\Sigma$ AE Chapter Eternal. The list includes the names of all brothers for whom obituaries have been received at the national fraternity office since the last issue was published. If a chapter is not listed, it is because no death notices have been received on members of that chapter. Obituaries and death notices about  $\Sigma$ AE brothers should be sent, bearing the name, address and telephone number of the sender, to the national fraternity office.*

### ALABAMA ALPHA-MU (Auburn)

John M. Cooper, '42, of Birmingham, Alabama, on June 13, 1985.

### ALABAMA IOTA (Birmingham-Southern)

Walter H. Brown, Jr. '31, of Port Washington, New York, on May 10, 1986.

### ALABAMA MU (Alabama)

Davis C. Wadsworth, Jr., '48, of Gadsden, Alabama, on April 21, 1986.

Lt. Cmd. Bryant A. Whitmire, '33, of Birmingham, Alabama, on July 10, 1985.

John J. Willson, '31, of St. Petersburg, Florida, on November 17, 1985.

### ARIZONA ALPHA (Arizona)

William D. Dritt, '32, of Dallas, Texas, on December 20, 1985.

John H. van Barneveld, '23, of Sedona, Arizona, on January 16, 1986.

Charles F. Swisher, '42, of Waterloo, Iowa, on March 29, 1986.

### ARKANSAS ALPHA-UPSILON (Arkansas)

George L. Mallory, M.D., '45, of Little Rock, Arkansas, on October 2, 1985.

### CALIFORNIA ALPHA (Stanford)

Donald L. Case, '30, of Santa Cruz, California, on December 31, 1985.

George K. Hislop, '41, of Yakima, Washington, on July 5, 1986.

Dr. Alfred M. Palmer, '30, of Los Angeles, California, on February 25, 1986.

Milton M. Teague, '25, of Santa Paula, California, on July 3, 1986.

### CALIFORNIA BETA (Berkeley)

Brinton Edwards, '28, of Simi Valley, California, on March 1, 1986.

### CALIFORNIA GAMMA (Southern California)

Rufus J. Capps, '21, of Buffalo, Wyoming, on March 6, 1985.

Carl H. Farman, '23, of Washington, DC, on May 26, 1986.

Dr. Wendell R. La Due, '18, of Akron, Ohio, on April 3, 1986.

### CALIFORNIA DELTA (Los Angeles)

Dr. Robert P. Haring, '30, of Bakersfield, California, on May 29, 1986.

### CALIFORNIA EPSILON (Occidental)

Donald W. Gage, Jr., '36, of La Canada, California, on April 14, 1986.

Charles D. Guenther, '35, of Azusa, California, on January 18, 1986.

### CALIFORNIA THETA (San Diego State)

John R. "Bobby" Schwartz, '86, of Los Angeles, California, on May 31, 1986.

### COLORADO DELTA (Colorado State)

Rudolph D. Burck, '19, of Denver, Colorado, on June 12, 1986.

Thomas E. Dwyer, '49, of Pacifica, California, on May 25, 1985.

Marven E. Nelson, '57, of Fort Morgan, Colorado, on November 9, 1985.

James B. Ward, '39, of Lake Oswego, Oregon, on November 6, 1985.

### COLORADO ZETA (Denver)

Thor M. Gardner, '30, of Evanston, Illinois, on April 1, 1986.

Martin H. Noonan, '34, of Stone Mountain, Georgia, on June 9, 1986.

### COLORADO LAMBDA (School of Mines)

Arthur B. Austin, '32, of Joplin, Missouri, on April 30, 1986.

Lowell A. Patterson, '34, of Aurora, Colorado, on January 27, 1986.

### COLORADO CHI (Colorado)

Franklyn S. Pulver, '29, of Wayne, Pennsylvania, on February 8, 1986.

### FLORIDA UPSILON (Florida)

L. S. Rentz, '39, of Clearwater, Florida, on June 14, 1985.

### GEORGIA EPSILON (Emory)

George F. Wells, '42, of Atlanta, Georgia, on March 20, 1986.

### GEORGIA PHI (Georgia Tech)

Hartman Eager, '37, of Valdosta, Georgia, on February 6, 1985.

Wade H. Eve, '38, of Pittsburgh, Pennsylvania, on August 11, 1985.

M. Berry Grant, '27, of Charlotte, North Carolina, on April 12, 1986.

Joseph M. Lane, '46, of Deland, Florida, in January, 1986.

Estes W. Mann, Jr., '48, of Memphis, Tennessee, on May 2, 1986.

Alden McLellan, III, '19, of Meridian, Mississippi, on March 1, 1986.

James E. Rankin, '51, of Louisville, Kentucky, on April 9, 1986.

Austin M. Wynne, '13, of Santa Barbara, California, on June 26, 1986.

### GEORGIA PSI (Mercer)

Joseph N. Cheney, '22, of West Palm Beach, Florida, on June 24, 1986.

### ILLINOIS BETA (Illinois)

William J. Noonan, '14, of Pensacola, Florida, on June 21, 1986.

### ILLINOIS DELTA (Millikin)

Donald J. Lindley, '24, of Charleston, Illinois, on February 23, 1985.



**ILLINOIS THETA (Chicago)**

Dr. H. Ivan Sippy, '21, of Rio Rancho, New Mexico, on June 17, 1986.  
Elton E. Tiegren, '32, of Chicago, Illinois, on November 26, 1985.

**ILLINOIS PSI-OMEGA (Northwestern)**

John B. Wallace, '36, of Toledo, Ohio, on December 18, 1985.

**INDIANA ALPHA (Franklin)**

Harold W. Starr, '30, of Columbia, South Carolina, on May 12, 1985.

**INDIANA BETA (Purdue)**

Gordon M. Fletcher, '42, of Booneville, Arkansas, on December 11, 1985.

Frederick Keeling, '21, of Madison, Indiana, on January 13, 1986.

Glenn F. Norris, '23, of San Diego, California, on September 14, 1985.

George O. Pierce, '23, of Cambridge City, Indiana, on January 3, 1986.

**INDIANA GAMMA (Indiana)**

Milton Rogge, '27, of Fort Wayne, Indiana, on March 18, 1985.

**INDIANA DELTA (DePauw)**

Stephen R. Fry, '66, of Bisbee, Arizona, on February 3, 1986.

**IOWA BETA (Iowa)**

Dr. Paul Ellis, '23, of Maquoketa, Iowa, on August 27, 1985.

Robert L. Steele, '59, of Cedar Rapids, Iowa, on February 20, 1986.

**IOWA GAMMA (Iowa State)**

Stanley W. Bradley, '49, of Anaheim, California, on January 15, 1986.

Edwin W. Peterson, '21, of Mt. Prospect, Illinois, on November 27, 1985.

Dr. James E. Shaw, '54, of Corning, Pennsylvania, on February 10, 1986.

**IOWA DELTA (Drake)**

William E. Ashby, '28, of Hendersonville, North Carolina, on March 14, 1986.

Dr. Roger W. Black, '57, of Columbia, South Carolina, on July 29, 1985.

Claude H. Gilchrist, '22, of Clearwater, Florida, on June 5, 1986.

Robert C. Roberts, '52, of Morris, Illinois, on April 20, 1986.

Charles F. Wennerstrum, '12, of Des Moines, Iowa, on June 1, 1986.

**KANSAS BETA (Kansas State)**

William J. Braddock, '27, of Encino, California, on April 15, 1986.

Lawrence Lewis, '31, of Houston, Texas, on June 5, 1986.

E. Q. Perry, '15, of San Antonio, Texas, on April 10, 1986.

**KENTUCKY EPSILON (Kentucky)**

Willard W. Rogers, '35, of Omaha, Nebraska, in November, 1985.

**LOUISIANA EPSILON (Louisiana State)**

Junior O'Mara, '35, of Jackson, Mississippi, on May 25, 1986.

Norman G. Stevens, '34, of Picayune, Mississippi, on March 18, 1986.

**LOUISIANA TAU-UPSILON (Tulane)**

David Bernhardt, Jr., '44, of New Orleans, Louisiana, on June 17, 1986.

Robert M. Cook, '55, of New Orleans, Louisiana, on September 20, 1985.

**MAINE ALPHA (Maine)**

James E. Davis, '24, of Clearwater, Florida, on November 20, 1985.

Robert J. Lurvey, '47, of Groton, Massachusetts, on June 10, 1986.

Carl W. Stevens, '24, of Windsor, Connecticut, on September 12, 1985.

Hubert P. (Rudy) Vallee, '25, of Hollywood, California, on July 3, 1986.

**MASSACHUSETTS BETA-UPSILON (Boston)**

Ralph W. Kimball, '39, of Minneapolis, Minnesota, on July 7, 1985.

Donald Richardson, '23, of Centerville, Massachusetts, on July 1, 1986.

**MASSACHUSETTS GAMMA (Massachusetts)**

Melvin G. de Chateau, '29, of Alexandria, Virginia, on November 28, 1985.

Thomas W. Steptoe, '36, of Charles Town, Virginia, on December 7, 1985.

**MASSACHUSETTS IOTA-TAU (MIT)**

Robert N. Eck, '34, of Brookfield, Wisconsin, on March 29, 1985.

**MASSACHUSETTS KAPPA (Massachusetts)**

Alexander A. Miller, '39, of Schenectady, New York, on September 26, 1985.

**MICHIGAN GAMMA (Michigan State)**

Evan Dirkse, '30, of Whispering Pines, North Carolina, on March 10, 1985.

**MICHIGAN EPSILON (GMI Eng. & Mgt. Inst.)**  
Mark E. Osterhoff, '88, of Dearborn, Michigan, on May 1, 1985.

**MICHIGAN IOTA-BETA (Michigan)**

David M. Bramble, '25, of Scottsdale, Arizona, on April 11, 1986.

Richard R. Norris, '33, of Duck Key, Florida, on December 13, 1985.

Roaldus F. "Roe" Richmond, '33, of Concord, New Hampshire, on May 8, 1986.

**MINNESOTA ALPHA (Minnesota)**  
Edward J. Davidson, '28, of Tubac, Arizona, on March 22, 1986.

Warren C. Hamburg, '20, of Oakland, California, on July 3, 1986.

Darrell G. Hoffman, '46, of Topeka, Kansas, on March 27, 1986.

**MISSOURI ALPHA (Missouri)**

John W. Schofield, '48, of Idaho Falls, Idaho, on July 22, 1985.

**MISSOURI BETA (Washington)**

Harry J. Steinbreder, '52, of Fairfield, Connecticut, on November 12, 1985.

**MONTANA ALPHA (Montana State)**

Robert T. Fitz-Stephens, '44, of Walnut Creek, California, on April 18, 1986.

**NEBRASKA LAMBDA-PI (Nebraska)**

Fred C. Thomsen, '25, of Springfield, Missouri, on January 6, 1986.

**NEVADA ALPHA (Nevada)**

Felix T. Castagnola, '41, of Incline Village, Nevada, on January 6, 1985.

Allan H. James, '37, of Salt Lake City, Utah, on September 4, 1985.

**NEW HAMPSHIRE BETA (New Hampshire)**  
Henry F. Brett, '34, of Richmond, Virginia, on July 20, 1985.

**NEW YORK ALPHA (Cornell)**

Robert J. Delaney, '26, of Elmira, New York, on May 14, 1985.

Roscoe H. Fuller, '24, of Convent, New Jersey, on October 24, 1985.

Lewis B. Pitcher, '13, of West Bradenton, Florida, on September 5, 1985.

**NEW YORK MU (Columbia)**

George B. Biggs, '21, of Covina, California, on April 13, 1985.

Erwin Tuthill, '24, of Larchmont, New York, on September 12, 1985.

**NEW YORK RHO (St. Lawrence)**

Francis E. Almstead, '31, of Clifton Park, New York, on December 13, 1985.

Paul A. Ross, '56, of Troy, New York, in November, 1985.

**NORTH CAROLINA THETA (Davidson)**

Willis C. Hodgins, '46, of Charlotte, North Carolina, on July 13, 1984.

**NORTH CAROLINA NU (Duke)**

William A. Pankey, Jr., '34, of Charlottesville, Virginia, on January 29, 1986.

Henry W. Stewart, '45, of Charlotte, North Carolina, on April 29, 1986.

**NORTH CAROLINA XI (North Carolina)**

William S. Guest, '52, of Lexington, North Carolina, on June 14, 1986.

Robert Strange, Jr., '42, of Knoxville, Tennessee, on January 10, 1985.

**NORTH DAKOTA ALPHA (North Dakota)**

Gerald Breiland, '58, of Apple Valley, Minnesota, on March 4, 1986.

**NORTH DAKOTA BETA (North Dakota State)**

Allan H. Flaten, '44, of Park River, North Dakota, on July 25, 1985.

**OHIO ALPHA (Youngstown)**

William H. Corbin, '64, of Warren, Ohio, on January 17, 1984.

**OHIO DELTA (Ohio Wesleyan)**

Charles R. Benjamin, '21, of Valparaiso, Michigan, on January 31, 1986.

Clifford D. Rosencrans, '36, of Lebanon, Ohio, on September 4, 1985.

A. Wayne Webner, '47, of Akron, Ohio, on January 1, 1986.

**OHIO EPSILON (Cincinnati)**

Walter W. Bishop, Jr., '23, of Belmont, Massachusetts, on May 18, 1986.

Joseph W. Hoffman, Jr., '31, of Boca Raton, Florida, on June 24, 1986.

**OHIO THETA (Ohio State)**

Mark A. Fuller, '19, of Cincinnati, Ohio, on May 25, 1986.

**OHIO KAPPA (Bowling Green)**

Joseph M. Douglass, '54, of Angola, Indiana, on January 13, 1986.

John Pribish, '50, of Nesquehoning, Pennsylvania, on May 27, 1986.

**OHIO NU (Toledo)**

Paul M. J. Driscoll, '57, of Placentia, California, on February 6, 1986.

Koerner E. Leutz, '27, of Perrysburg, Ohio, on December 13, 1985.

**OHIO RHO (Case Western Reserve)**

Thomas A. Frischman, '25, of Chagrin Falls, Ohio, on May 15, 1986.

Frank C. Mead, Jr., '29, of Melrose, Massachusetts, on August 6, 1985.

**OHIO SIGMA (Mount Union)**

Dr. Donald L. Greenamyer, '37, of Canton, Ohio, on May 9, 1986.

**OHIO TAU (Miami)**

Thomas J. Budden, '32, of Columbus, Ohio, on June 22, 1986.

Kenneth M. Lamp, '27, of Rocky River, Ohio, on February 25, 1986.

Lyle B. McBride, '25, of Boca Raton, Florida, on April 7, 1986.

Walter C. McNelly, '21, of Oxford, Ohio, on January 8, 1986.

**OKLAHOMA KAPPA (Oklahoma)**

Frank M. Graham, '28, of Englewood, Colorado, on January 26, 1986.

Harry L. Hartley, '39, of McAllen, Texas, on April 11, 1986.

Fred T. Klingensmith, '29, of Sapulpa, Oklahoma, on June 11, 1985.

**OKLAHOMA MU (Oklahoma State)**

William R. Johnson, '49, of Oklahoma City, Oklahoma, on June 4, 1986.

**OREGON ALPHA (Oregon State)**

Donald L. Cahill, '50, of Tigard, Oregon, on August 30, 1985.

Frederic S. Harkins, '45, of Portland, Oregon, on March 27, 1986.

**OREGON BETA (Oregon)**

George M. Drury, '28, of Portland, Oregon, on September 20, 1985.

Herschel C. Hardisty, '37, of Alderwood Manor, Washington, on June 21, 1985.

**PENNSYLVANIA ALPHA-ZETA (Pennsylvania State)**

C. S. Krumrine, '18, of Merion Station, Pennsylvania, on October 21, 1985.

John R. Stevenson, '49, of Alexandria, Virginia, on June 7, 1985.

**PENNSYLVANIA DELTA (Gettysburg)**

John H. Fish, '37, of Wallingford, Pennsylvania, on November 24, 1985.

Willis E. Manges, '38, of Rosemont, Pennsylvania, on December 1, 1985.

Colonel Henry W. Parlett, '51, of Lake Mary, Florida, on December 14, 1985.

**PENNSYLVANIA ZETA (Bucknell)**

Ralph W. Bolton, Jr., '42, of Kingston, New Hampshire, on March 18, 1985.

Frederick L. Burkhart, '49, of El Paso, Texas, on April 14, 1985.

George C. Gibson, '43, of East Meadow, New York, on March 18, 1986.

Howard J. Hubbell, '50, of Portsville, Pennsylvania, on November 2, 1985.

**PENNSYLVANIA THETA (Pennsylvania)**

Frederick R. Allen, '34, of Wilmington, Delaware, on May 6, 1985.

Edward S. Miller, '43, of Wyomissing, Pennsylvania, on May 27, 1986.

**PENNSYLVANIA SIGMA-PHI (Dickinson)**

James W. Hoffman, '42, of Havertown, Pennsylvania, on October 10, 1985.

**PENNSYLVANIA PHI (Carnegie-Mellon)**  
Robert I. Davis, '46, of Pennington, New Jersey, on March 21, 1986.

**PENNSYLVANIA CHI-OMICRON (Pittsburgh)**  
James A. Clarke, M.D., '50, of Madisonville, Kentucky, on August 1, 1985.

Harold S. Hays, '26, of Portland, Oregon, on March 9, 1985.

Robert B. Miller, '52, of Waynesburg, Pennsylvania, on April 14, 1986.

**PENNSYLVANIA OMEGA (Allegheny)**

Joseph M. Backus, '46, of Honolulu, Hawaii, on January 29, 1986.

Karl S. Klicka, '33, of Belleville, Michigan, on June 24, 1986.

**RHODE ISLAND ALPHA (Rhode Island)**

Louis J. Othote, '66, of Rockville Centre, New York, in April, 1986.

**SOUTH DAKOTA SIGMA (South Dakota)**

Russell C. Molstad, '49, of Sturgis, South Dakota, on July 20, 1985.

**TENNESSEE ZETA (Memphis)**

Geren M. Baird, Jr., '42, of Tavares, Florida, on May 6, 1986.

**TENNESSEE ETA (Union)**

William H. Keathley, Jr., '35, of Hernando, Mississippi, on April 12, 1985.

**TENNESSEE KAPPA (Tennessee)**

Dr. Kenneth W. Christenberry, '37, of Knoxville, Tennessee, on April 19, 1986.

Samuel V. Minsky, '37, of Knoxville, Tennessee, on November 16, 1985.

Hugh B. Nystrom, '52, of Knoxville, Tennessee, on July 9, 1985.

Donald W. Pinder, '84, of Nashville, Tennessee, on April 14, 1985.

George W. Ridenour, Jr., '58, of Knox, Tennessee, in February, 1986.

F. M. Weathersby, '20, of Memphis, Tennessee, on January 1, 1986.

**TENNESSEE NU (Vanderbilt)**

William A. Benson, Jr., '38, of Nashville, Tennessee, on May 19, 1986.

**TEXAS DELTA (Southern Methodist)**

Eugene C. Daniel, '28, of Weslaco, Texas, on March 5, 1986.

William R. Davison, '43, of La Porte, Texas, on November 12, 1985.

Clyde C. Jackson, '25, of Dallas, Texas, on April 27, 1986.

Yancy L. Russell, '25, of Natalia, Texas, on March 30, 1986.

**TEXAS RHO (Texas)**

Hal H. Ramsey, III, '47, of Tucson, Arizona, on August 2, 1985.

Hans C. Richards, '26, of Franklin, Texas, on January 15, 1986.

Harry L. Wood, III, '57, of Ft. Worth, Texas, on May 1, 1986.

**VERMONT ALPHA-SIGMA-PI (Norwich)**

Rowe A. Ghirardini, '59, of Millersville, Maryland, on June 15, 1986.

**VIRGINIA KAPPA (William & Mary)**

Richard L. Ames, Jr., '38, of Waterview, Virginia, on February 21, 1986.

James W. Spicer, '35, of Goldsboro, North Carolina, on June 9, 1986.

**VIRGINIA OMICRON (Virginia)**

William G. Hewes, '32, of Gulpport, Mississippi, on April 27, 1986.

Yuille Holt, Jr., '40, of Lynchburg, Virginia, on May 6, 1986.

**WASHINGTON BETA (Washington State)**

Dr. George J. Freiermuth, '42, of Hollister, California, on June 9, 1986.

William R. Matthews, '21, of Spokane, Washington, on November 21, 1985.

**WASHINGTON GAMMA (Puget Sound)**

Jan R. Terry, '59, of Everett, Washington, on May 29, 1985.

**WASHINGTON CITY RHO (George Washington)**

Edwin F. Giblin, '20, of Drexel Hill, Pennsylvania, in January, 1986.

Ernest A. Thomas, '62, of Washington, DC, on May 5, 1986.

**WISCONSIN ALPHA (Wisconsin)**

Anton L. Metz, Jr., '30, of St. Petersburg, Florida, on May 8, 1985.

**WYOMING ALPHA (Wyoming)**

Donald W. Jewett, '30, of Scottsdale, Arizona, on May 30, 1986.

J. Irl Prichard, '23, of Sheridan, Wyoming, on July 27, 1985.

John W. Stewart, '40, of San Ramon, California, on January 18, 1986.



## Rudy Vallee: Originator of Little Sisters?

Sometime in late 1949 or early 1950, Rudy Vallee was in Minneapolis appearing at a hotel. His accompanist was also an  $\Sigma$ AE. Brother Vallee kindly agreed to have dinner at the Minnesota Alpha house and "sing for his supper."

There were several sorority pledges also present as guests and Rudy presented them with scrolls, making them Little Sisters of Minerva. That is the first time I had ever heard the term. Whether it was Rudy's idea or that of another brother present, I don't know. The question is: Does that represent the beginning of the LSOMs? Certainly it was a very early occurrence and of interest in that Brother Vallee was involved.

A short time later, Rudy's new bride Eleanor was also a guest at the  $\Sigma$ AE house. The enclosed photos were taken, but unfortunately I have no pictures of the early (original?) Little Sisters.

WILLIAM B. HORN  
Minnesota '52  
Minnesota Alpha



Vallees and Minnesota Alpha brothers

For more on the late Brother Vallee, see "Chapter Eternal."

## Keeping $\Sigma$ AE Tradition in the Family

With each issue of *The Record* I receive, I enjoy seeing many pictures of my fellow  $\Sigma$ AEs across the country. For that reason, I decided to submit this photograph to possibly be published.

It is a photograph of (l to r) my grandfather, Raymond L. Hanson, my brother and sister, Mathew and Christine, and myself, Mark Cabot. We are appropriately standing in front of the California Rho chapter house of Sigma Alpha Epsilon on the **University of the Pacific** campus in Stockton, California. My grandfather was a member of California

Alpha, **Stanford University**, in the early '30s, while my brother and I have been active brothers of California Rho. Our sister is a Little Sister of Minerva also at California Rho.

We are very proud to be affiliated with Sigma Alpha Epsilon and will do everything in our power to keep the family tradition going.

MARK A. CABOT  
University of the Pacific '87  
California Rho



Brother Hanson & Cabots

## Proud $\Sigma$ AE Dad: Two Sons-Brothers

Recently, my second son William Thomas Porter II was initiated into the active chapter at Alabama Iota (**Birmingham-Southern**) and now along with his older brother, Robert L. Porter, Jr., are both actives. I was fortunate enough to be EA of the chapter as was my older brother before me. I have checked as closely as possible and believe that I may be the only alumnus in the history of the chapter to have two active sons in  $\Sigma$ AE at the same chapter at the same time. This is certainly a very simple distinction, but one I have wished for all my life — now it's for real.

You can see I'm extra proud of my "sons-brothers" and for the many benefits of being an  $\Sigma$ AE.

ROBERT L. PORTER, DMD  
Birmingham-Southern '57  
Alabama Iota

## T.H.E. Award Recipient Writes: No Honor More Valued

I am indeed honored to receive The Highest Effort Award for 1985 in the field of Education and Religion. I sincerely appreciated the presentation made by Brother Dennis O'Neel [archon, Province Chi], and I have read with great pleasure the account of the award which was reported in the Spring issue of *The Record*.

For over fifty years I have been associated with the University of Southern California School of Medicine as Professor and (from 1951-1972) as Chairman of the Department of Pathology. During this time, I have received honors of different sorts, but none will be more valued by me than this just given by Sigma Alpha Epsilon.

HUGH A. EDMONDSON, MD  
Oklahoma '26  
Oklahoma Kappa

## Letters Welcomed

The editorial staff of *The Record* welcomes your letters. Address your comments to *The Record*, Sigma Alpha Epsilon National Fraternity, P.O. Box 1856, Evanston, IL 60204. Letters may be edited for purposes of clarity or space.



# Alumni Awards Announced

The fraternity recognizes the dedicated efforts of its outstanding alumni through various awards. This year at the ΣΑΕ Leadership School winners were announced for alumni association awards, the Merit Key Award, Outstanding Chapter Advisor Award and the House Corporation Award.

## Nebraska Lambda-Pi

The Nebraska Lambda-Pi Alumni Association (**Nebraska**) won the 1985-86 Chapter Alumni Association Award on more than its strength in numbers. This 12-year-old association, which has 150 dues-paying members, provides numerous innovative programs for the chapter's undergraduates, as well as alumni activities.

Topping the group's list of programs is its chapter scholarship offered to deserving undergraduate members. The association also participates in initiation and provides a pledge class dinner and career speaker program for the chapter.

For the chapter's 1,000 alumni, the association publishes an alumni newsletter three times a year and hosts an annual golf tournament.

Nominees for the Chapter Alumni Association Award were the Mississippi Sigma (**Southern Mississippi**) and California Iota (**Cal State at Fresno**) alumni associations.

## Atlanta

The Atlanta Area Alumni Association, often recognized as one of the fraternity's finest, was named the top Area Alumni Association for 1985-86 at the 51st Leadership School.

The Atlanta group boasts many achievements, including hosting the fraternity's National Convention in 1985.

In 1986, the Atlanta Founders Day dinner was attended by more than 125 brothers from 35 chapters, according to President Clint Smith, **Oklahoma '77 (Kappa)**. The Atlanta Area Alumni Association also hosted the Province Epsilon Golf Tournament this year.

The Atlanta association annually sponsors the Ivan Allen Rush Party for all young men in the Atlanta area planning to attend a college where there is an ΣΑΕ chapter. The Atlanta group meets the first Wednesday of each month and has more than 140 dues-paying members.

The **Central Mississippi** Alumni Association was also nominated for the Area Alumni Association Award.

## Detroit's Newsletter

The Detroit Alumni Association was named the winner of the 1985-86 Alumni Association Newsletter Award. The association's newsletter, *ΣΑΕ Alumnews*, was published four times during the year. *ΣΑΕ Alumnews* is "rife with news of its many events, members and nearby chapters," according to John Edwards, director of alumni services for the national fraternity, who presented the award. The Detroit group's newsletter is edited by brothers Bill Fiscus, **Michigan State '50 (Gamma)**, John Prost, **Michigan State '58 (Gamma)**, and Paul Dittmer, **Ferris State '72 (Michigan Zeta)**.

## Fred Martin

Fredrick E. Martin, **North Dakota State '34 (North Dakota Beta)**, a founding member of, and long-time contributor to, his chapter, was recognized for his faithful service to the fraternity with the Merit Key Award. Merit Key Award recipients are nominated by their Province Archons and are approved by a two-thirds vote of the Supreme Council and by the Eminent Supreme Recorder.

Brother Martin, who currently serves as North Dakota Beta chapter advisor, has provided much financial assistance to his chapter over the years, enabling the completion of many projects and aiding brothers suffering financial hardships.

"Not to be satisfied with mere cash contributions to the house," wrote one undergraduate member of the chapter, "Brother Martin has invested his time and emotions in the house, which has reaped a bounty not only for him but also for the brothers of the chapter."

Brother Martin has not missed a meeting or function of the chapter "for as long as anyone can remember." He is credited with writing many letters of goodwill on behalf of the chapter to parents and newspapers, as well as letters of inspiration to the chapter as a whole.

"Nobody has a better time than we ΣΑΕs do. There is clear and irrefutable evidence in abundance that we have had one of the best years ever!" Fred wrote in a recent letter to the chapter.

"No fraternity could ask for, or hope for, more or better! We have a great spirit going... So let's be justifiably proud of all our Brothers and their achievements," he added.

Upon accepting the Merit Key Award, Brother Martin recalled some of his memories of being a delegate to the first and second ΣΑΕ Leadership Schools, and thanked the many brothers who made the award possible.

## Chapter Advisors

Six brothers were given the Outstanding Chapter Advisor Award at the 51st Leadership School. These brothers are recognized for diligent and enthusiastic guidance to the chapter they serve, helping the chapter to become as self-sufficient as possible. Named outstanding chapter advisors for 1985-86 are the following:

### Paul Cain

Advisor to California Tau  
Cal Polytechnic at San Luis Obispo

### Richard Hooker

Advisor to Massachusetts Delta  
Worcester Polytechnic Institute

### Dr. Samuel Kennedy

Advisor to Missouri Delta  
Rockhurst College

### David Lorenz

Advisor to South Dakota Sigma  
University of South Dakota

### Gordon Timpany

Advisor to Iowa Chi  
University of Iowa

### Dr. Joseph Walt

Advisor to Iowa Sigma  
Simpson College

## Indiana Beta House Corporation

The fraternity's House Corporation Award is given in recognition of outstanding performance of the house corporation's duties. These include finance, maintenance, contracting, legal matters and insurance. Planning, goal-setting and the working relationship with the chapter are all evaluated in selecting the winning house corporation.

This year, the award was given to the Indiana Beta House Corporation at **Purdue University**. The Indiana Beta chapter house ranks as one of the most beautiful and outstanding structures on the Purdue campus. The award judges found the budget management and projection plans of the house corporation exemplify the superior work of this dedicated corporation.



(For more Alumni News, see page 22.)



# Alumni News Briefs

## ASSOCIATIONS

### Engineering

C. Rick Coneway, **Tulane '68** (*Louisiana Tau-Epsilon*), president of Coneway and Associates, Inc., was named the American Consulting Engineers Council's first "New Principal of the Year." Coneway is a consulting civil/environmental engineer, and his firm has grown from three to 30 personnel in the last two-and-a-half-years. The council's judges cited him for numerous professional awards and civic achievements. Brother Coneway has been a military jet pilot for 17 years and currently flies F-4 phantoms for the Air Force Reserve.

### Dental

Joseph A. Devine, D.D.S., **Wyoming '48** (*Alpha*), was recently installed as president-elect of the American Dental Association. Devine, a general dentist in Cheyenne, Wyoming, is a past president of the ADA and has served as a district trustee for several years. He has been active in other dental and civic organizations as well.

### Osteopathy

Charles Vargas, **Lewis & Clark '81** (*Oregon Delta*), was named president of the Undergraduate Academy of Osteopathy. At the time, Vargas

was a second-year student at the University of New England College of Osteopathic Medicine at Giddeford, Maine. He was also president of the university's local chapter of the academy.

### Home Furnishings

Robert E. East, **University of Evansville, '51** (*Indiana Epsilon*), has been installed as president of the International Home Furnishings Representatives Association, which has 5,000 members in the industry. The association acts as the voice of wholesale representatives in the U.S., Puerto Rico and Canada. A long-time representative of a furniture firm, East is active in numerous civic activities.

### Advertising

Harry Blomgren, **Beloit '60** (*Wisconsin Phi*), was recently elected secretary/treasurer of the national council of the American

Advertising Federation. Blomgren, vice president of the Cramer-Krasselt Co. of Milwaukee, has been involved as a governor and chairman of the AAF's 8th District, and is a recent recipient of the Milwaukee Advertising Club's Aid to Advertising Education Award.

### Shoppers Guides

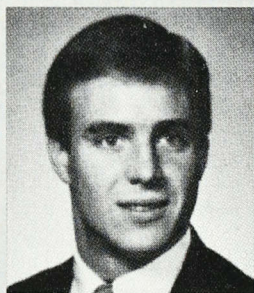
Jim Crosby, **Drake '56** (*Iowa Delta*), was recognized by the Shoppers Guides of Iowa recently with the Distinguished Service Award for his 18 years of service to the organization. He has held every office in SGI. He is vice president of FNCO Corp., a chain of shopping guides. Brother Crosby recently helped an undergraduate member of Iowa Delta to find employment. The undergraduate wrote *The Record*, "Mr. Crosby has proven to me how far the bonds of fraternity stretch. (He) is a special brother..."

## ΣΑΕ Med Student Wins Nation's Top Greek Scholarship

Brother E. Wesley Ely, Jr., **Tulane '85** (*Louisiana Tau-Upsilon*), a medical student, has been named the first place recipient of the 1986 Balfour Scholarship, the top scholarship in the fraternity world.

Designed to provide financial assistance to full-time graduate or professional school students, the scholarship is awarded annually in memory of Lloyd G. Balfour by the National Interfraternity Foundation. Robert K. Ausman, M.D., of the foundation's board presented the scholarship award to Ely at the 51st Leadership School, noting that Mr. Balfour's personal mission was the improvement and advancement of fraternity life.

Ely received a grant of \$5,000 as the first place winner. The foundation awards a total of \$20,000 annually to several students. The scholarship selection committee bases its decision on the following criteria: Scholarship; contribution to fraternity life and demonstration of leadership; contribution toward community service and commu-



Ely: Love, concern for people

nity life during the four years of college life; financial need; and a description by the applicant of his or her goals in life, career and further fraternity endeavors.

"The competition consisted of 70 applicants screened by their own organizations," explained Dr. Ausman. Applications are accepted from all national fraternities and sororities, including professional fraternal organizations.

"This year, the four judges had no disagreement about the first choice. There was unanimity of opinion," Ausman noted.

Brother Ely wrote in his application that "the fraternity system

and the experiences which I cherish, have exposed to me direct routes by which I can use some of my talents. In the future, my career goals are to show others the same respect and care which has been poured out to me."

As a member of the national fraternity's Men's Health Issues Committee, he is able to put to use some of the knowledge he is gaining in medical school. While earning his master's in public health and studying to become a medical doctor, Wes conducts alcohol and drug abuse workshops with other fraternity officials at various campuses and ΣΑΕ chapters. He is involved on his own campus lining up speakers for an alcohol and drug education week.

"During the past five years, the fraternity has provided for me a blessed treasure of friendships as well as a rich source of personal growth," Ely wrote. "... my activities in support of the fraternity system, notably concerning the health of our young men and women and the role of fraternity in the lives of our alumni, are

outgrowths of the same love and concern for people that inspire me to become a physician."

As an undergraduate, Wes served his chapter as Eminent Archon, Eminent Deputy Archon, alumni relations chairman and editor of the chapter newsletter. He was a delegate to the ΣΑΕ Leadership School, and served this year on the school's alumni faculty. Wes was the top scholar in the Tulane Department of Biology in the class of 1985, graduating summa cum laude. He is a member of Phi Beta Kappa, Omicron Delta Kappa (for overall academics, athletics and leadership) and Phi Omicron Delta (for contribution to campus spirit, awarded to 15 students annually).

As a student at Tulane University Medical School, Wes has been a lay eucharistic minister for the school's Catholic chapel, he has served on the Community Action Council of Tulane University Students and as a New Orleans Hospital volunteer and he swam on the Tulane Masters Swim Team.



**FEDERAL GOVERNMENT**

**Education**

Dr. Peter R. Greer, **New Hampshire '62 (Beta)**, has been appointed deputy undersecretary for intergovernmental and inter-agency affairs at the U.S. Department of Education. Greer has been involved in various education administrative positions and teaching in New England states. As deputy undersecretary, he serves as the liaison for the secretary and undersecretary with state and local government officials, the education community and other federal agencies. He also provides policy guidance.

**Petroleum Council**

Dallas investment counselor Frank M. Burke Jr., **Texas Tech '61 (Alpha)**, has been invited by Secretary of Energy John S. Herrington to serve on the National

Petroleum Council, a "key advisory committee" to the secretary. Burke is chairman, chief executive officer and managing general partner of a private investment company. He was previously director of Energy and Natural Resources for Peat, Marwick, Mitchell & Co. in the U.S.

**HHS**

Florida internist Robert Windom, M.D., **Duke '52 (North Carolina Nu)**, has assumed the duties as assistant secretary of health in the Department of Health and Human Services after receiving U.S. Senate confirmation in June. Windom has been a professor of internal medicine at the medical schools of the **University of Miami** and the **University of South Florida**, and has been active in medical associations at the state and national levels.

**BUSINESS & INDUSTRY**

**Michigan's #1**

Stephen Howard, **Michigan State '71 (Gamma)**, president of Spearhead Automated Systems, Inc., is responsible for his company's Number One ranking in the "Michigan Private 100" by *Michigan Business* magazine. Credited by the magazine with leading his "fledgling ... company through phenomenal revenue growth," Brother Howard "founded and nurtured" this high-tech firm during the height of the Detroit area's "deep and protracted recession." A Founder Member of the Sigma Alpha Epsilon Foundation and past president of the Detroit ΣΑΕ Alumni Association and his chapter, he is active in local and national tool and machining associations and Circumnavigator's Club.

**Sales Award**

Charles A. Edwards, **North Carolina State '67 (Alpha)**, won Shell Chemical Company's Gold Medal, the highest sales performance award in Shell's 1985 Olympian program. Edwards and two

others were selected from a field of 100 sales professionals nationwide. He is senior account representative for industrial chemicals in the Atlanta, Georgia area. Shell Chemical is a division of Shell Oil Company.

**Hall of Fame**

Rene C. McPherson, **Case Western Reserve '50 (Ohio Rho)**, was recently inducted in the National Business Hall of Fame sponsored by Junior Achievement, Inc. Brother McPherson was chairman of Dana Corporation until his retirement in 1980, and served as dean of the **Stanford University** Business School for three years. He is preceded into the Hall of Fame by such notable businessmen as John D. Rockefeller, Henry Ford, Andrew Carnegie, Walt Disney and others. Upon selecting McPherson, JA cited his in-house training program and red tape-cutting tactics.

**ALMA MATER HONORS**

**Ohio Wesleyan**

James A Young, **Ohio Wesleyan '54 (Delta)**, a Cleveland, Ohio attorney, has been elected chairman of the Ohio Wesleyan University Board of Trustees. He has been a member of the Board of Trustees for 13 years, and served five years as chairman of its finance committee. Young received a master's degree from **George Washington University** and a law degree from **Case Western Reserve**.



Chairman Young

mater at graduation exercises in June. Fries, who won ΣΑΕ's 1984 Highest Effort Award for the field of entertainment, has produced more than 80 movies for television since 1970, many of which have received artistic and technical awards. Among his theatrical motion picture productions is "Cat People," featuring Nastassja Kinski. Fries is a graduate of the ΣΑΕ Leadership School and a Phoenix Society Founder Member of the Sigma Alpha Epsilon Foundation.

**George Washington**

James E. Shuler, **George Washington '85 (Washington City Rho)**, has been elected an alumni trustee by the university's Board of Trustees. Shuler was nominated for the position as the result of a GW Student Association recommendation to the General Alumni Association. He is the fourth recent graduate to become an alumni trustee. Shuler was a leader in numerous campus activities as an undergraduate, including serving as Eminent Archon of his chapter. He now resides in Tulsa, Oklahoma, where he is volunteers coordinator for the March of Dimes.

**Ohio State**

Charles W. Fries, **Ohio State '50 (Ohio Theta)**, chairman and president of a Los Angeles motion picture and television production firm, received an honorary Doctor of Arts degree from his alma

**SPORTS**

**Tennis**

Jerry Noyce, **Minnesota '66 (Alpha)**, was named the International Coaches Association Coach of the Year. Noyce is the men's tennis coach at the University of Minnesota. He has built several talented teams in the past few years.

also named to the National Interfraternity Conference All-Fraternity All-American Baseball Team.

**Hockey**

Ron Mason, **St. Lawrence '63 (New York Rho)**, coached his **Michigan State University** hockey team to the 1985-86 National Collegiate Athletic Association championship title. The national championship was a first-ever for Mason, whose team won 34 games, lost nine and tied two. MSU's hockey coach since 1979, Mason's last four squads have set single-season records for victories.

**Baseball**

Gardner "Grady" Hall, **Northwestern '86 (Illinois Psi-Omega)**, a left-handed pitcher, was the first round choice of the Chicago White Sox in the baseball free agent draft. Hall was



# Reunions: Brothers from '20s, WWII, even '80s, Reunite

## Washington Alpha Washington

Sixteen members of Washington Alpha (Washington) who were initiated 50 or more years ago met for an informal luncheon meeting last June in Seattle, Washington. The brothers, who represented Washington Alpha classes of 1925 through 1936, plan to meet every year in Seattle. The reunion of 50-plus-year members was planned by Col. (U.S. Army Retired) Charles G. Kirk of the class of '27. Brother Kirk may be contacted at 12630 N.E. 3rd Street, Bellevue, Washington 98005.

## Louisiana Tau-Upsilon Tulane

Another group of brothers got together at Hilton Head last summer to enjoy their "lasting friendships." Several members of the Louisiana Tau-Upsilon classes of '80 and '81 and their wives and guests enjoyed a week of sun, sailing and skiing. According to Brother John McBrayer, the week "turned out to be an outstanding vacation." The group is planning to go on a ski trip next February. "It is obvious that the bonds of ΣAE . . . endure the years and distance separating us from our fraternity days at Tulane," McBrayer said.

## Illinois Psi-Omega Northwestern

More than one hundred Illinois Psi-Omega (Northwestern) alumni and wives met in Evanston, Illinois last May for the "World War II Years, Once in a Lifetime" reunion weekend. They came from as far as Florida, California, Louisiana and the Virgin Islands.

Organized by Past Province Mu Archon Barry McNulty, Ralph Fisher and Roger Moran, the reunion featured visits to the chapter house, restaurants that were "popular haunts" over 30 years ago, a tour of the enlarged NU campus and a memorial service and dinner dance at the Levere Memorial Temple, headquarters of the national fraternity in Evanston.

Brothers from the classes of 1943 through 1953 were represented at the reunion. Many of them had not seen each other in 30 or 40 years. They quickly bought out a supply of sweaters which had been imprinted with the reunion logo to memorialize the event.

The memorial service held in the chapel of the Levere Memorial Temple honored seven members of the chapter who lost their lives in World War II. Colonel Emory Stoker, *Illinois Psi-Omega '23*, of the U.S. Army Reserve, and Commander Hank Hellweg, *Illinois Psi-Omega '47*, of the U.S. Naval Reserve, presided.

The dinner dance featured music from the '40s and '50s. Several brothers spoke to the

group, making "remarks from the heart — some humorous, some very emotional," according to Brother McNulty.

At one local restaurant, Fanny, the 80-year-old owner greeted many of the brothers

and their wives, who had been customers years ago. At the dinner, one brother shouted, "I bet we can sing better than the active chapter!" An impromptu songfest ensued.



WW II Reunion: 'Once in a Lifetime'

## New Orleans Group Hosts 1st World Series Tourney

The year-old New Orleans ΣAE Alumni Association has hit upon a new event that not only brings together many of the 500 area alumni brothers, but lends a new dimension to rushing and interchapter relations. The event: The ΣAE World Series Softball Tournament.

The 1st ΣAE World Series Softball Tournament was held last June, on the same day as the New Orleans annual summer rush party. The annual party is an evening, coat and tie affair. The tournament, which was implemented to complement the evening rush party, "would even turn Billy Martin, Oakland Athletic, green with envy," in the words of the Alumni Association Secretary Geary Mason.

## Eminent Supreme Champions: LSU 'Old Boys'

The tournament is open to any ΣAE teams wishing to participate. The 1st World Series

brought together eight teams vying to become Eminent Supreme Champions. The teams were Alabama, Louisiana State Actives, LSU Old Boys, Tiger Vets A (LSU alumni living in New Orleans), Tiger Vets B, Tulane Actives, Tulane Old Boys and Southwestern Louisiana.

The LSU Old Boys reign as the first Eminent Supreme Champions as they won all three of their games. The consolation game winner was the Tulane Actives team. Brothers Brian Berns, *Louisiana State '82 (Epsilon)*, and Kenneth Delahoussaye, *Louisiana State '81*, were voted the tournament "Co-Most Valuable Players."

The tournament, which is sponsored by the New Orleans association with "much help" from the Tulane chapter, Louisiana Tau-Upsilon, will be held again next June. Any interested ΣAE chapter or alumni group is invited to participate. Contact Geary Mason at 1314 Pine St., New Orleans, LA 70118; (504) 866-0661.

## Remember ΣAE in your estate planning

"The best use of life is to invest it in something which will  
outlast life." — William James

Your legacy can live on through the benefits of the Sigma Alpha Epsilon Foundation. A bequest in your will can help to ensure the continuance of our foundation's cause in giving scholarships, student loans, internships, educational & leadership programs and other services to worthy students. For further information contact the national fraternity office in Evanston, Illinois.



## Florida Beta Team Wins ΣAE National Golf Tourney

By Bob England

Tournament Chairman

The 8th Annual ΣAE National Golf Tournament was played in May under the beautiful, sunny skies of Florida. The tourney attracted brothers from 18 states, and 35 chapters were represented.

The winner this year was A. Downing Gray, **Florida State '61 (Beta)**. Brother Gray is a repeat winner of The ΣAE National Golf Tournament, and a former member of the U.S. Walker Cup Team for several years. Members of Florida Beta's tourney team, with Downing's help, were the team champions. Included on the Florida Beta team were Jack Williams, Doug Mitchell, Jeff Goldworn, Jeff Files and Gray.

First place flight winners of the tournament were Jeff Goldworn, **Florida State '83 (Beta)**; Thomas Marine, **Southern Mississippi '84 (Sigma)**; Thomas Warren, **Georgia Tech '76 (Phi)**; J. Randy Nobles, **West Florida (Sigma)**; Louis Ray, **Florida '88 (Upsilon)**; and Jerry Shoulders, **Southern Mississippi '84 (Sigma)**. Tourney collegiate champion was J. Sandy Brasher, **Tulane '84 (Louisiana Tau-Upsilon)**.

The tournament was played at the Tiger Point Country Club in Pensacola, on a course that is a championship layout and provides a challenge for the low handicapped and a fun time for the weekend golfer. Social activities included a poolside cookout, an evening at Seville Square, New Orleans-style cuisine at Shanahans, a banquet and a dance.

Plans are set for a great tournament in 1987. The 9th Annual ΣAE National Amateur Tournament will be held April 30 through May 2, 1987. If you want to be on the tournament mailing list, send your name and address to: ΣAE National Amateur, P.O. Box 12281, Pensacola, FL 32581. Further details will appear in the Winter 1986 issue of *The Record*.

### New Alumni Directory Available

The 1986 ΣAE Alumni Directory is now available. All brothers who purchased the directory should receive it by November 20. If you have ordered a copy of the directory and have questions about delivery, or if you want to order a copy, write or call the Customer Service Department of the Bernard C. Harris Publishing Company Inc., 3 Barker Avenue, White Plains, NY 10601 (914) 946-7500.

## Los Angeles Alumni Invited: Exciting Events

John Keough, **Harvard '75 (Massachusetts Gamma)**, recently moved to the Los Angeles area from New York City and has put together a schedule of "exciting, unusual, spectacular and original" events for brothers in the L.A. area.

The group's first function included a tailgate party and seats at the **UCLA**, versus **Long Beach State** football game in September.

Other events include an evening horseback ride in scenic Hollywood Hills and Burbank, an early morning marlin fishing trip, lunches and dinners at El Torito restaurants, and — not to be missed — an opportunity to enjoy a "select piece of real estate" to watch the 1987 Rose Bowl parade.

Los Angeles area brothers who are interested in attending an exciting event can call John Keough at (213) 472-0104.

### SAE SPORTSWEAR by D & T ENTERPRISES

As seen at the 51st Leadership School



SAE Country Club, Polo Club, Pride and Crest

We are proud to offer these creative designs on excellent quality merchandise. All designs are available on Hanes Beefy T's tee-shirts and Russell's "Super Weights" sweatshirts.

SWEATSHIRTS (postage paid) \$ 16.75  
TEE-SHIRTS (postage paid) \$ 9.75

#### New Items:

SAE SAFARI - Tee-shirts & Sweatshirts  
SAE Country Club Hats - custom direct embroidered on  
IMPERIAL HATS - \$12.50

. . . . Date Parties . . . . Athletic Teams . . . . Special Events . . . .  
We will print any of your activewear needs. Call for more information.

#### DISCOUNTS GIVEN FOR LARGE ORDERS!!!

SEND FOR BROCHURE  
D & T Enterprises  
P.O. Box 1012 Bowling Green, OH 43402 (419) 353-0618



## Chapter News: Winning Individuals, Chapter Programs

### **Alabama Iota Birmingham-Southern**

Nominee, Moseley Zeal Award  
**Chapter Achievement Award**  
**The Jones-Laurence Award for Scholastic Achievement:**  
**William Scott McCary\***

\*See "Foundation Programs" section in this issue.

**Troy State**, Alabama Epsilon ... Former governor and gubernatorial candidate Fob James, **Auburn '56** (*Alabama Alpha-Mu*), visited the chapter, congratulating them on their achievements ... The brothers won the spring intramural softball championship, thus clinching the campus' all-sports trophy.

**Arkansas**, Arkansas Alpha-Upsilon ... Took first in the campus' annual fraternity scholar's bowl ... Raised \$5,000 for the United Fund of Fayetteville through a charity football game.

### **Arizona Alpha Arizona**

**Chapter Achievement Award**  
 Nominee, Chapter Housing Award  
**Communications Award, Rush Brochure Category**

### **Arizona Beta Arizona State**

**Communications Award, Poster Category**

### **California Lambda Cal State at Long Beach**

**Outstanding Eminent Archon: Chris Nicks**

**Cal State at Los Angeles**, Cal Mu ... Won the first place trophy for Greek Week participation ... Brothers who hold elected office on the Associated Students Board: **Michael Rogers**, president; **Barry Parr**, arts & letters representative; **David Palacios**, engineering & technical representative; and **Scott Ackerman**, representative at large.



**Cal Upsilon brothers tug for Greek Week**

### **Cal Tau**

#### **California Polytechnic at San Luis Obispo**

**Chapter Achievement Award**  
**Cousins Award for Outstanding Rush Programming**  
**Communications Award, T-Shirt/Sweatshirt Category**

This is the second consecutive year Cal Tau has been "co-winner" of the Cousins Rush Award. When presenting the award, Past Eminent Supreme Archon Johnny Warren said, "Cal Tau sets the standards for rush on the Cal Poly campus. The reason behind their success lies in their organization and creativity. Their rush booklet is an example of the impressive program they have developed."

**LaVerne**, Cal Upsilon ... **Tim Pettis** played golf in the NCAA Championships for a second year in a row ... Tim was also named Academic All-American ... The chapter won Greek Week championship for second consecutive year.

**California at Irvine**, California Irvine Colony ... The colony was named the Most Promising New Group at the school's Academy Awards night last spring.

**Santa Clara University**, Santa Clara Colony ... Raised more than \$2,000 for the American Cancer Society by sponsoring the school's first-ever "Spring Fling" ... Spring Fling involved several campus groups, including the police department's softball team.

### **Colorado Delta Colorado State**

**Chapter Achievement Award**

Colorado Delta Brother Roger "Big Daddy" Sherman was elected president of the student body at CSU ... Roger, a former Eminent Treasurer and Eminent Deputy Archon of the chapter, is also on a national committee of the Red Cross ... **Eric Rasmussen** was elected to a second term as a CSU student senator.

### **Florida Delta South Florida**

**Chapter Achievement Award**  
**Outstanding Eminent Archon Award: Jeff Marple**

### **Florida Epsilon Central Florida**

**Chapter Achievement Award**

Florida Epsilon's faculty advisor, **Dr. Robert Bledsoe**, was selected "Teacher of the Year" at Central Florida ... Bledsoe was instrumental in helping the group get chartered in 1973 ... The chapter presented him the Order of the Lion for his support ... Past EA of the chapter **Steven Cady** was elected vice president of student government.

### **Florida Sigma West Florida**

Nominee, Moseley Zeal Award  
**Chapter Achievement Award**  
**Award for Excellence in Community Relations\***

\*See "Foundation Programs" section in this issue.





Martin Huffman photo

"Hazing on Trial" speaker Dave Westol congratulates Kansas Beta's Leadership School delegates.

**Georgia**, Georgia Beta ... The brothers were honored by the Georgia Chapter of the Leukemia Society of America for raising more than \$16,000 over the last school year ... The Leukemia fund drive is a project of the chapter's pledge class each year and is strongly supported by the chapter and its alumni ... The tradition to support the Leukemia Society began 15 years ago when Georgia Beta brother Hamilton Ansley was stricken with the disease and died ... Brother Ansley had been EA of the chapter and a campus leader.

**Georgia Epsilon  
Emory**

**Chapter Achievement Award**

Nominee, Award for Excellence in Scholarship

**Outstanding Eminent Archon Award: Billy Tidmore**

**Illinois**, Illinois Beta ... Brother **Joe Schwab** was elected to one of the campus' Interfraternity Council Rush Director positions while still a pledge ... There are 52 fraternities at Illinois, which makes it one of the largest Greek systems in the country.

**Northwestern University**, Illinois Psi-Omega ... **David M. Joseph** was elected speaker of the Associated Student Government ... As speaker, he is the liaison between student senators and the executive board ...

**Indiana Beta  
Purdue**

**Outstanding Eminent Archon Award: Mark Nelson**



**Drake Campus Leaders at Iowa Delta**

(Front, l to r), Ted Engel, student senator; Jeffrey Drummond, senator; Douglas Murdoch, Greek Programming Council chairman; (middle) Tom Martin, senator; John Corrigan, Drake Relays chairman; (back) Gregory Brandt, student body president; Reed Ramsay, IFC president; Logan Hoxie, senator.



**Louisiana Alpha brothers & alumni: New house**

**Iowa State**, Iowa Gamma ... Brothers and members of Chi Omega sorority raised more than \$1,200 for the Variety Club of Iowa and established a traveling trophy for the best-designed float in ISU's annual VIESHEA parade ... The chapter organized a dance for mentally retarded children at a local school ... **Brian Kennedy** was elected president of the student body and **Kurt Larson** and **Scott Murphy** were elected student body senators.

**Iowa Sigma  
Simpson**

**Chapter Achievement Award**

Iowa Sigma Brother **James Kutzner** received a Rotary International scholarship for the 1986-87 academic year, which he is using toward his economic studies at St. Andrews University in Scotland ... Kutzner was student body president at Simpson.

**Kansas Alpha  
Kansas**

**Most Improved Chapter Award**

**Outstanding Eminent Archon Award: Jim O'Donnell**

**Kansas Beta  
Kansas State**

**John Baugh Award for  
Outstanding Pledge Programming**

**Kentucky Kappa  
Centre College**

**Chapter Achievement Award**

Nominee, ΣAE Award for Excellence in Scholarship

**Most Improved Chapter Award**

**Outstanding Eminent Archon Award: William Jeffrey**

The chapter recently held a benefit auction which raised \$300 for the Kentucky Chapter of the Leukemia Society of America ... The benefit was held in memory of alumnus Tommy Bell, who recently succumbed to the disease.

**Southwestern Louisiana**, Louisiana Alpha ... Brothers moved into their new chapter house which was built through the generosity of chapter alumni ... Contributed landscaping to the surrounding yard ... Raised \$700 for the American Heart Association ... Painted the university's Child Development Center.

**Louisiana Epsilon  
Louisiana State**

**Most Improved Chapter Award**

**Outstanding Eminent Archon Award: Eric La Fleur**



**Louisiana Rho  
Louisiana Tech**

Nominee, Moseley Zeal Award  
**Chapter Achievement Award**

Nominee, Baugh Award for Outstanding Pledge Program  
Nominee, Cousins Award for Outstanding Rush  
**Outstanding Eminent Archon Award: Riley Hagan**

The chapter won first place overall in the campus' Greek Week ... Raised more than \$1,000 for Muscular Dystrophy with a 24-hour softball tournament ... **Thomas "Bubba" Wolford** recently won "best man" honors in the U.S. Powerlifting Federation championships ... Bubba set USPF and school records in his division.

**Maine**, Maine Alpha ... **Dan Etzweiler** was named to the National Interfraternity Conference All-American, All-Fraternity Baseball Team ... Dan is a second baseman who last season batted .355 with 8 home runs and 61 runs batted in.

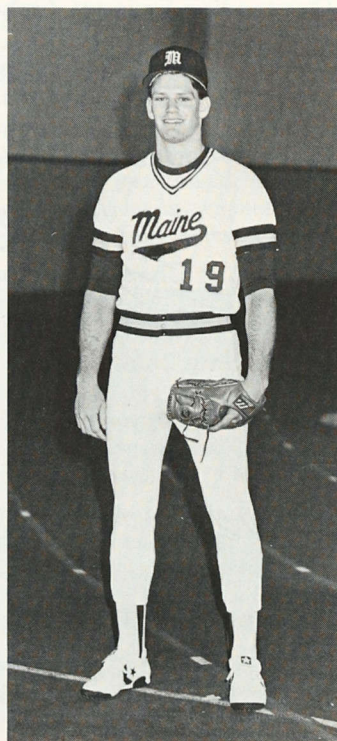
**Maryland**, Maryland Beta ... Assisted in the SOME (So Others Might Eat) program by serving food to the hungry and homeless of the Washington, D.C. area ... Worked as volunteers in "Hands Across America" fundraiser in May.

**Massachusetts Delta  
Worcester Polytechnic Institute**  
Nominee, Moseley Zeal Award  
**Chapter Achievement Award**

**Michigan State**, Michigan Gamma ... **Michael Blackburn**, dressed as Canadian rock singer Corey Hart, placed third out of 14 in a regional contest of the MTV-sponsored Rock Alike lip-synch contest, a fundraiser for multiple sclerosis ... The chapter raised almost \$900 last winter for Blackburn's act, topping more than 50 other acts at MSU.



**Blackburn as Hart**



**Etzweiler**

**Alma College**, Michigan Delta-Tau ... Boasts several campus leaders: **Ralph Augostini**, student congress president; **John Rowland**, president of the college's Union Board; **Don Wheaton**, recipient of the Barlow Trophy, Alma's top leadership and scholarship senior honor; all three are members of Omicron Delta Kappa leadership society ... **Pete Larsen** is a Lyndon Baines Johnson Fellow, a member of Omicron Delta Kappa and Phi Alpha Theta (history honors society) ... Pete's senior thesis was published in *Michigan Academician*.

**Michigan Epsilon, B Section  
GMI Engineering & Management Institute**  
**Chapter Achievement Award**

**Minnesota Alpha  
Minnesota**  
**Chapter Achievement Award**

**Mississippi**, Mississippi Gamma ... Raised approximately \$1500 for the North Mississippi Retardation Center ... Participated in a university book move, helping the school to save the university \$80,000 in moving costs.

**Southern Mississippi**, Mississippi Sigma ... Six brothers were elected to the student senate ... **Stan Buckley** succeeded in winning the cabinet position of election commissioner for the executive branch ... Half of the school's 14-member cheerleading squad for the 1986 football season are brothers and Little Sisters of Minerva ... The chapter raised more than \$1,000 for muscular dystrophy in their seventh annual MD bowl, through a full contact football game between the ΣΑΕs and another campus fraternity ... The brothers defeated ΚΣ, 21-6 ... "Southern Style," USM's student recruitment and orientation team, named Brother **Tom Booth** "outstanding Southern Style member," and Brother **Don Diboll** "outstanding pre-registration facilitator" ... Booth was also named "senator of the year" last year.

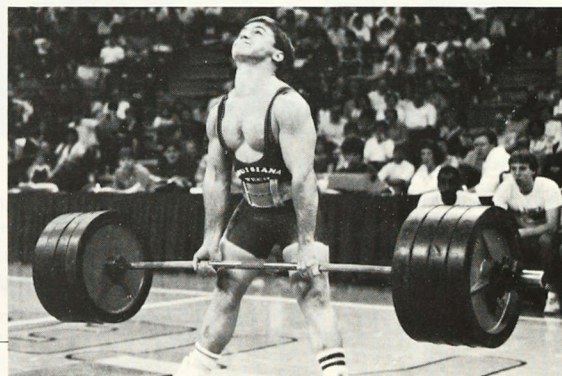
**Missouri Delta  
Rockhurst College**

Nominee, Baugh Award for Outstanding Pledge Program  
**Outstanding Eminent Archon Award:  
Matthew McGrath**

**Nebraska Lambda-Pi  
Nebraska**

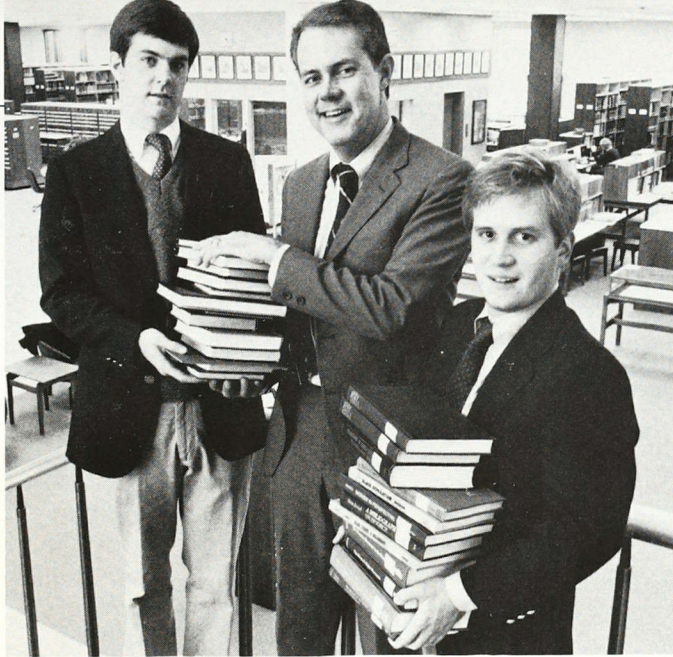
**Besser-Lindsey Award: William David Jackman**  
Nominee, Chapter Housing Award

**Bill Jackman** was initiated at North Carolina Nu (**Duke**) and transferred to Nebraska. He earned two letters in basketball while on a full athletic scholarship, he maintained a grade point average over 3.0 and served as an officer of Nebraska Lambda-Pi.



**Wolford**





**North Carolina Theta Book Fund**

Brothers Alex Maultsby and Jamie Kiser give new books to library director.

**New York Alpha  
Cornell**

Chapter Achievement Award

**New York Epsilon  
Rensselaer Polytechnic**

Chapter Achievement Award  
Honorable Mention, Baugh Award for  
Outstanding Pledge Programming

Davidson College, North Carolina Theta . . . Gave \$2,500 to its five-year-old book fund, which now totals \$13,000 (the investment's income buys 25 books a year for a local library) . . . Raised \$26,000 during the school's phonathon, accumulating more pledges than any other group . . . **Woody Burns** was the individual phonathon winner, raising \$2,260 in pledges.

**North Carolina Nu  
Duke**

Chapter Achievement Award

Nominee, Award for Excellence in Community Relations  
**Cousins Award for Outstanding Rush Programming**

North Dakota State, North Dakota Beta . . . Teamed with Kappa Delta sorority in the "Bison Brevities" variety show to win the "Best Production Act" award . . . Several brothers also joined in another sorority act, which won "Judges Special" award . . . **Brian Beckey** was chosen Best Individual Performer . . . **Jay Reinan** is a member of Blue Key National Honor Society, which has sponsored Bison Brevities since 1929 . . . Jay also ran for Mayor of Fargo last spring, "surprising everyone" by securing nearly ten per cent of the vote.

Youngstown State, Ohio Alpha . . . Won a Province Pi award for improved GPA . . . Took third place in the Greek Sing . . . Raised more than \$200 for muscular dystrophy through its second annual volleyball tournament.

**Ohio Epsilon  
Cincinnati**

Honorable Mention, Baugh Award for  
Outstanding Pledge Programming

**Oklahoma Mu  
Oklahoma State**

Nominee, Cousins Award for Outstanding Rush  
**Communications Award, Newsletter Category**

**Oregon Alpha  
Oregon State**

Award for Most Improved Scholarship  
Most Improved Chapter Award

**Pennsylvania Gamma  
Lafayette College**

Chapter Achievement Award

Nominee, Award for Excellence in Scholarship  
Nominee, Baugh Award for Outstanding Pledge Program

**Pennsylvania Chi-Omicron  
Pittsburgh**

Chapter Achievement Award

The chapter's grade point average was third highest out of 25 fraternities on campus . . . Won all-sports championship.

**Pennsylvania Zeta  
Bucknell**

Chapter Achievement Award  
Chapter Housing Award

**South Carolina Delta  
South Carolina**

Chapter Achievement Award

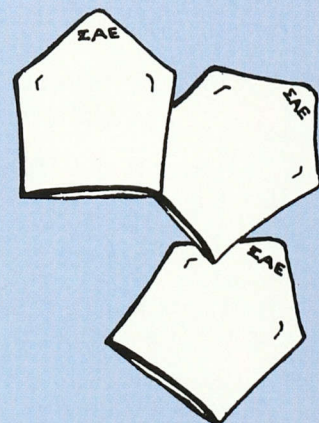
South Carolina Delta received the Province Omicron Best Chapter Award for the third consecutive year . . . Sold four hundred tickets to finance nutritional meals for the homeless . . . Raised \$3,500 for the Crystal Jenkins Life Fund Drive (for a local child needing a liver transplant) . . . Red Cross blood drive "drew" more than the chapter's 70-pint pledge . . . New philanthropy is to hold monthly bingo nights for a senior citizen housing development, with necessities as prizes . . . Won the intramurals all-sports points championship for ninth consecutive year.

**South Carolina Nu  
Clemson**

Chapter Achievement Award

**ΣAE Ski Hat**

Ideal for a Christmas gift, the ΣAE ski hat of wool/acrylic is available in navy with silver letters, black with silver letters, navy with red letters and white with navy letters. To order, indicate desired color(s), your name and UPS delivery address. Include \$15 for each hat, add \$3 to your order for shipping and handling. Send order and check to: ΣAE Merchandise, P.O. Box 1856, Evanston, IL 60204. If delivery is in Illinois, add \$1.05 per hat for sales tax. (VISA and MasterCard orders accepted: Include type of card, account number, expiration date and your signature.)







**South Carolina Upsilon food drive**

College of Charleston, South Carolina Upsilon ... Brothers and pledges helped collect hundreds of cans and boxes of food in a drive to feed the local needy of Charleston, working in conjunction with Grace Church ... Won the Province Omicron Most Improved Chapter Award.

Winthrop College, Winthrop Colony ... This colony in Rock Hill, South Carolina swept the awards during Greek Week last spring ... Took first in the Greek Sing, won the Greek Games, the Community Service Award and the second place Scholarship Award ... They placed in every Greek award category.

**South Dakota Theta  
South Dakota State**

**The John O. Moseley Leadership School Award  
For Fraternity Zeal  
Chapter Achievement Award**  
Nominee, Award for Excellence in Scholarship  
**Communications Award, Newsletter Category**

The chapter also won the South Dakota Board of Regents Award for Organizational Leadership last school year ... The award is presented annually by the state board in recognition of the student organization that best fulfills its mission and potential ... South Dakota Theta was selected from among 60 groups in higher education in the state.

**Tennessee Beta  
Middle Tennessee State  
Chapter Achievement Award**

**Tennessee Delta  
Tennessee Tech  
Chapter Achievement Award**

On campus, Tennessee Delta was named Fraternity of the Year last spring ... Won the Service Award for its community and campus work ... **Tim Bulow**, an active campus leader, was named Outstanding Greek Man of the Year.

**Union University, Tennessee Eta** ... Moved into a new chapter house ... Won its third consecutive intramural championship ... Took second in Greek Sing ... Earned highest Greek grade point average on campus.



**New Tennessee Eta Chapter House**

**Tennessee Kappa  
Tennessee**

Nominee, Award for Excellence in Community Relations  
Nominee, Chapter Housing Award

Brother **William Parker "Bubba" Halliday** was recognized for his leadership and service to the university with the Chancellor's Citation for Extraordinary Campus Leadership and Service to the University ... Bubba had been an active contributor to the chapter, the United Way fundraising campaign, the IFC judicial system, the student government association and the Board of Trustees athletic committee.

**Texas Alpha  
Texas Tech**

**Outstanding Eminent Archon Award: Bruce Frank**

**Washington Alpha  
Washington**

Nominee, Award for Excellence in Scholarship

**Washington Beta  
Washington State**

**Chapter Achievement Award  
Communications Award, Scrapbook Category**

**Washington Gamma  
Puget Sound**

**Award for Excellence in Scholarship**  
Nominee, Award for Excellence in Community Relations  
Honorable Mention, Baugh Award for  
Outstanding Pledge Program

Nominee, Cousins Award for Outstanding Rush

**Besser-Lindsey Award: Tim Beals**

**Tim Beals** held several offices in the chapter, was active on the university's budget task force, lettered in tennis each of his four years and graduated magna cum laude. He is a member of Mortar Board, Phi Kappa Phi and Phi Beta Kappa.

**Washington City Rho  
George Washington University**

Nominee, Award for Excellence in Community Relations  
The brothers won the campus Fraternity Service Award for time and effort contributed to community projects ... Raised over 25 per cent of the total funds contributed to charity by all 10 of the university's fraternities, and provided 150 hours of labor to community service projects.

**Wyoming, Wyoming Alpha** ... **Brad Bonner** was promoted to head editor of student daily newspaper, *The Branding Iron* ... **Tim Flitner** was recently featured on the cover of *Cowboy Country* magazine for his efforts in ranching. (See photo at right.)



# ΣAE NEWS-GRAM

ALL THE LATE-BREAKING NEWS FROM 1856 SHERIDAN ROAD

**NEW CHAPTER POLICIES MANDATED** – Due to the mounting liability crisis, the Supreme Council has mandated new chapter policies regarding **alcohol use, drugs, hazing, sexual abuse and fire and safety precautions.** The new policies require all ΣAE rush activities to be dry, and prohibits all open parties, among other things. All chapters and advisors have been informed of these new fraternity policies.

**LIABILITY/RISK MANAGEMENT QUESTIONS?** Any questions about the fraternity's new Chapter Risk Management Policies should be directed to the ΣAE national staff. For helpful answers, call the national fraternity office between 8:30 AM and 4:30 PM Central Time.

**PREPARE FOR FOUNDERS DAY NOW** – Alumni associations and chapters planning to award 50- and 25-year membership certificates at Founders Day should order the certificates as soon as possible from the national fraternity office. If your Founders Day event is already planned, notify The Record of date, time, place and person in charge. After your Founders Day event, be sure to send photos and any news from the event to The Record.

**EXTENSION/INSTALLATIONS** – As this issue of The Record goes to press, new chapter installations are planned, pending mail ballot approval, at the **State University of New York at Binghamton** on November 2, and at **Santa Clara University** (California) on November 22. At this time, the fraternity has 193 chapters and 12 colonies.

Any alumni interested in assisting with the new ΣAE colonies at **Millsaps** in Jackson, Mississippi and at **Yale** in New Haven, Connecticut, should contact Brad Cohen, extension director, at the national fraternity office.

**LEADERSHIP SCHOOL FACULTY APPLICATIONS** are due at the ΣAE Foundation office by **December 1, 1986.** If you are interested in serving as a faculty member, please send a completed application to Tom Hume at the ΣAE Foundation office. Faculty members will be in Evanston Saturday, August 1, 1987 through Wednesday evening, August 5, 1987. Brothers who have previously served on the faculty and wish to serve again should also notify Brother Hume.

**THE RECORD DEADLINE** – The Spring, 1987 issue deadline for news and photographs is February 1, 1987. All contributions should be clearly identified and should include the sender's address and telephone number. Send submitted material to Tracey Stoll, associate editor of The Record, at the national fraternity office.



## Nine ΣAE Campuses Labeled "America's Best"

... Nine ΣAE campuses ranked as the nation's pacesetters in a survey of college presidents last year by the magazine *U.S. News & World Report*. The survey identified the top ten national universities for major research and granting of doctoral degrees, the top ten liberal arts colleges and the top ten regional liberal arts colleges that award more than half their bachelor's degrees in liberal arts. Of the top ten national universities with ΣAE

chapters, **Stanford** ranked first, **Princeton** fourth, **Duke** sixth, **California at Berkeley** tied for seventh, **North Carolina at Chapel Hill** ninth, and **Dartmouth** tenth. Picks for the top regional liberal arts colleges with ΣAE chapters include **Denison** (Ohio) fifth, **Birmingham-Southern** (Alabama) seventh and **Richmond** (Virginia) tied for ninth.

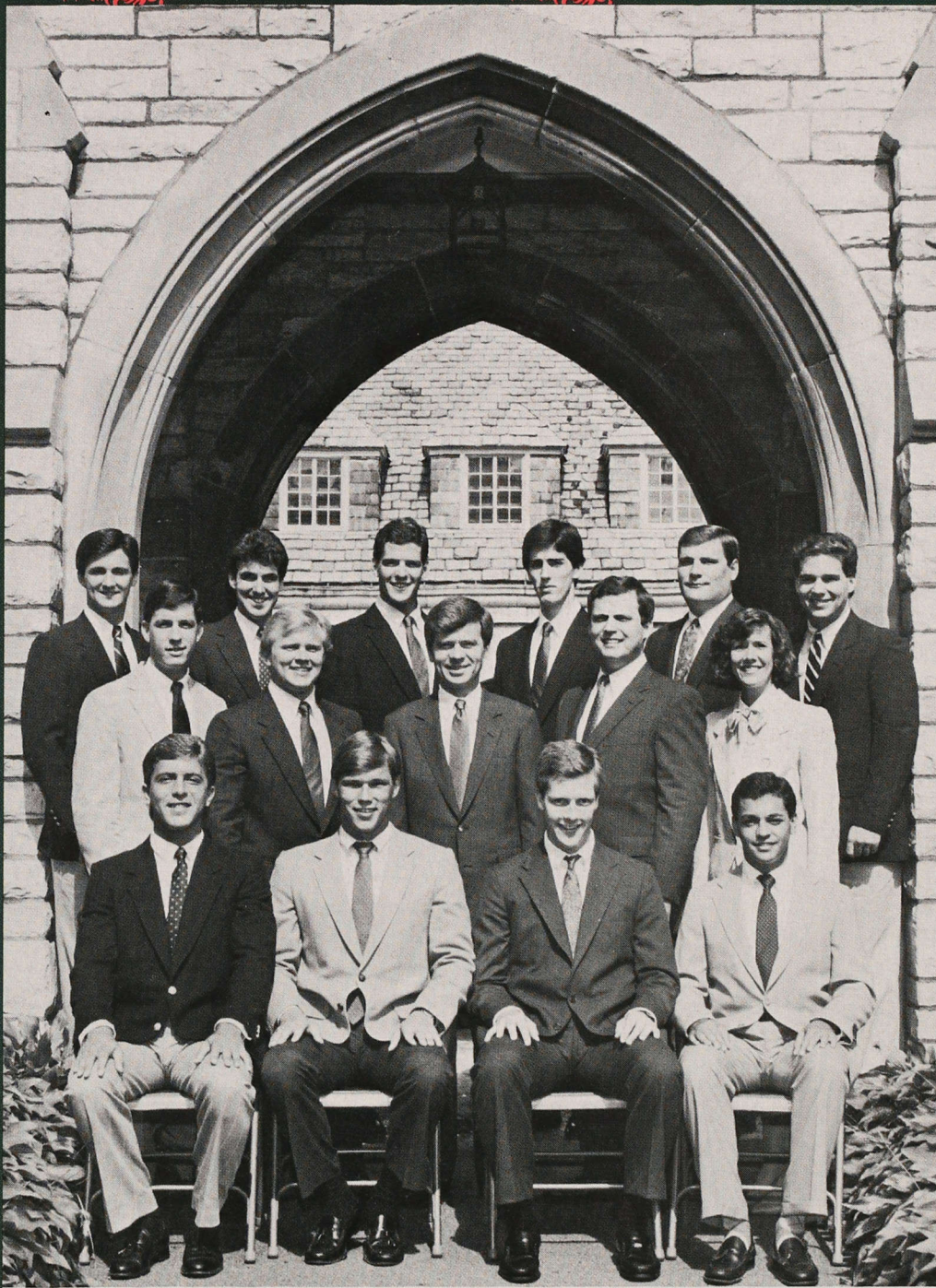
## WELCOME NEW COLONIES

**Millsaps College**  
Jackson, Mississippi

**Yale University**  
New Haven, Connecticut

Flitner of Wyoming Alpha





## 1986-87 ΣAE Staff

Staff members of Sigma Alpha Epsilon Fraternity and the ΣAE Foundation are responsible for developing and administering alumni and undergraduate services and programs. Serving the fraternity and the foundation this year are: (front row, l to r) Brad Cohen, **Arizona '85 (Alpha)**, extension; Zan Hefner, **University of the South, Sewanee '86 (Tennessee Omega)**, consultant; Chris Goodale, **Simpson '86 (Iowa Sigma)**, consultant; Mike Sophir, **Nebraska '85 (Lambda-Pi)**, consultant; (middle row) Steve Brister, **Duke '85 (North Carolina Nu)**, consultant; John Edwards, **Idaho '85 (Alpha)**, alumni services & chapter housing; Ken Tracey, **Eastern New Mexico '70 (Alpha)**, Eminent Supreme Recorder & executive director of the foundation; Jeff Arnold, **Millikin '76 (Illinois Delta)**, finance & administration; Tracey Stoll, **Wyoming '78**, communications; (back row) Dave Schott, **Carnegie-Mellon '85 (Pennsylvania Phi)**, consultant; Tom Hume, **Wisconsin '85 (Alpha)**, foundation programs; Jay DeWitt, **New Hampshire '86 (Beta)**, consultant; Jeff Kinzler, **Loyola '83 (Illinois Alpha-Omega)**, annual giving; Dave Arendt, **Drake '78 (Iowa Delta)**, development; Scott Haggard, **Texas Tech '84 (Alpha)**, chapter development.

Phoenix illustration by Chuck Goding