

THE RECORD

OF SIGMA ALPHA EPSILON

FALL 1987



MEET THE ESA

An interview with Brother Ben Allen

By Doug Gott

Brother Ben Allen, **Miami University '60 (Ohio Tau)**, was installed as the Eminent Supreme Archon of Σ AE on June 19 during the national convention in Portland.

His two-year term as ESA will be the culmination of his eight years of service to the Supreme Council. However, it's evident through his enthusiasm that his efforts for the fraternity won't end in 1989.

Except for a two-year stint with a company in Washington, Allen has been with JCPenney since graduation. He is vice president of finance for the Telacton Corporation, which is designing a JCPenney Home Shopping Network. This program differs from similar existing television shopping programs in that customers can shop for many items instead of buying single items from live programs on impulse.

Allen is extremely loyal. His appreciation of his hometown (Greenfield, Ohio) and his university are as strong as his fondness for the fraternity. He has served as national president of the Miami University Alumni Association, and president of both the New York City and Salt Lake City Σ AE alumni groups.

In an interview from his office in Schaumburg, Ill., Allen discussed his love for Σ AE, his pride in serving as ESA, the fraternity's strengths and foremost challenges and the 1989 convention in Cincinnati.

Q. *What are some of the important issues facing Σ AE that you will address in the next two years?*

A. Clarke (Houston, former ESA) and I worked very closely together, and we tried to guarantee a continuity of progress. So my administration is basically an extension of his. There are a couple of things I will emphasize however. One being extension. I want to get as many men as possible to enjoy the Σ AE experience. I really want to have 200 chapters soon.

Secondly, I want to do my utmost to improve the quality of life for the undergraduates. This can be done through such things as improving chapter housing and increasing contact with the national staff to implement our fine programs.

Q. *Obviously serving on the Supreme Council involves a big sacrifice of time and effort. Why did you decide to become so involved with the fraternity after graduation?*

A. When I started in business, I did a lot of travelling and couldn't be involved with Σ AE. When I was transferred to New York City, I looked up the

alumni group, and got involved with the leadership there and really loved it. My undergraduate days were such an enjoyable experience that it was only natural for me to continue working for the fraternity.



ESA Allen

Q. *The Cincinnati convention in 1989 is very close to your hometown and chapter, both of which you hold in high regard. Are you looking forward to a memorable occasion?*

(Continued on Page 6)



Brother Allen as a collegian at Miami University. Ohio Tau brothers relaxing in the chapter house are (left to right) Fred Stenger ('61), Larry Brockway ('61), Allen, Hugh Seyfarth ('61), Bob Dutro ('59) and Len Brooks ('51).

FROM THE EDITOR

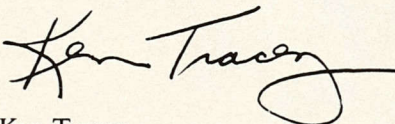
As summer 1987 folds into memory, we celebrate two exceptionally fine ΣAE events in the 131st Anniversary National Convention and the 52nd Leadership School. See related stories inside.

Our cover story highlights the lifetime achievement of yet another brother. The Golden Gate Bridge celebrates 50 years as the outstanding moment to the life work of Brother Joseph B. Strauss, *Cincinnati* 1982. The story was researched and written by our summer intern Doug Gott, *W. Kentucky '87*. Doug had a great summer here and we benefited from his tenure as I know he did from being here.

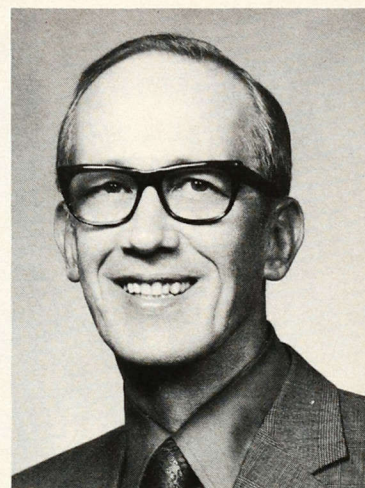
Much of the work on this issue was prepared by Tracey Stoll, who departed after nearly three years as our Associate

Editor. We value her contribution and wish her well in her new life in Southern California. Surf's up!

Porter Underwood was a great friend and brother, and many of us will miss him very much. He was the major reason we held the National Convention in Portland in June. Unfortunately, he was hospitalized just before we all arrived. He was elected Honorary ESA and died shortly after he was told that he had just been elected. This issue of *The Record* is dedicated to Porter.



Ken Tracey
Editor



Porter Underwood
1915 - 1987

THE RECORD

OF SIGMA ALPHA EPSILON
PUBLISHED CONTINUOUSLY SINCE 1880
CIRCULATION 57,490

Kenneth D. Tracey
EDITOR

Doug Gott
Tracey Stoll
ASSOCIATE EDITORS

Frances Gillan
CIRCULATION MANAGER

Paul Reddy
M. David Wakeley
CONTRIBUTORS

PUBLICATION ASSISTANTS:

Karen Corrado, Jacqueline Haynes,
Michele Michaelson, Elaine Schubert,
Marolyn Taylor

Copyright © 1987 Sigma Alpha Epsilon Fraternity.

The Record of Sigma Alpha Epsilon (USPS 457620, ISSN 0745-1679) is published quarterly in the Spring, Summer, Fall and Winter by Sigma Alpha Epsilon Fraternity, 1856 Sheridan Road, Evanston, IL 60201. Second class postage paid at Evanston, IL and additional mailing offices.

Postmaster: Please send notice of undeliverable copies (Form 3579) to Sigma Alpha Epsilon Fraternity, P.O. Box 1856, Evanston, IL 60204.

The Sigma Alpha Epsilon National Fraternity office and the ΣAE Foundation office is located at the Levere Memorial Temple in Evanston, Illinois. For information, call 312-475-1856 weekdays, between 8:30 AM and 4:30 PM Central Time.

The Supreme Council: Ben L. Allen, Eminent Supreme Archon; David M. Lance, Eminent Supreme Deputy Archon; William C. Chapman, Eminent Supreme Warden; M. Ronald Doleac, Eminent Supreme Herald; Marc P. Franson, Eminent Supreme Chronicler; and the late Porter P. Underwood, Honorary Eminent Supreme Archon.

CONTENTS

Meet the ESA
Brother Ben Allen elected ESA in Portland Inside Cover

FEATURES
Brother Strauss Builds "The" Bridge
The Golden Gate at Fifty 2

Making the Best Better
ΣAE celebrates 131st anniversary with convention in Portland, Oregon 4

Leadership Begins With Me
How about that 52nd school, a smashing experience 5

Texas Beta Rechartered 25

Wisconsin Phi Restored 27

DEPARTMENTS
Alumni News 7

Letters 11

ΣAE News-Gram 13

Founder Members 15

Chapter Eternal 22



MEMBER
COLLEGE FRATERNITY EDITORS ASSOCIATION

Advertising Representative:
ParQuil Associates Ltd. Corp.
341 Elm Avenue
Bogota, NJ 07603
201-343-7766

On the Cover: Our appreciation to Brother Fraiser Mills of the San Francisco Alumni Association for providing the beautiful photo of the Golden Gate Bridge taken by his photographer wife Elizabeth B. Mills.



A small man with huge dreams

At Golden Gate Bridge anniversary celebration, Mancini & Lance present portrait in honor of Σ AE's most famous engineer.

By Doug Gott

It was an engineering marvel and state of the art when built 50 years ago. Today, its presence still provokes a feeling of awe, and the Golden Gate Bridge in San Francisco remains both a example of extraordinary engineering and a hurdle in the quest to build better bridges.

The bridge's inception, design and construction were all seen through by Joseph Strauss, **University of Cincinnati '92 (Ohio Epsilon)**, an intense, intelligent and innovative man whose life was dedicated to building bridges. As America celebrated the 50th anniversary of Strauss' creation on May 27, the diminutive, five-foot, 120-pound man's ability to suspend a bridge 4,200 feet over the San Francisco Bay with merely cable and two towers seemed even more incredible.

Eminent Supreme Deputy Archon Dave Lance and Past Eminent Supreme Archon Joe Mancini, both members of Ohio Epsilon, were on hand to present San Francisco Mayor Diane Feinstein and the Friends of the Golden Gate Committee with a portrait of Strauss at a luncheon in his honor. Also present were Σ AE Director of Development Dave Arendt and Strauss' sons, Ralph Sr. and Richard, **Stanford '29 (California Alpha)**.

The original portrait of Strauss was commissioned by Judge Alfred K. Nippert, another Ohio Epsilon alumnus, in 1952. One portrait hangs in the Levere Memorial Temple, and the other is in the chapter house at Cincinnati. A group of Ohio Epsilon alumni made two photographs of the portrait in the Cincinnati chapter house and devel-

oped them to exact size. One was given to the University of Cincinnati and the other was presented at the luncheon. At the luncheon, plans were announced to build a museum at the foot of the bridge where the portrait will hang.

There were a week's worth of activities commemorating the golden anniversary of the golden bridge. The largest events were the running of the Golden Mile, a parade of yachts and naval vessels, a blimp race and the revealing of permanent nighttime illumination of the bridge towers — a feature that Strauss designed but for which he couldn't raise the money.

Joseph Strauss, a founding member of the Ohio Epsilon chapter, was primarily concerned with the 500 bridges he built, but had more than 100 pat-

ents for other inventions. He is responsible for a portable searchlight used by the USA and USSR in World War II and a disappearing observation tower used by the American Army.

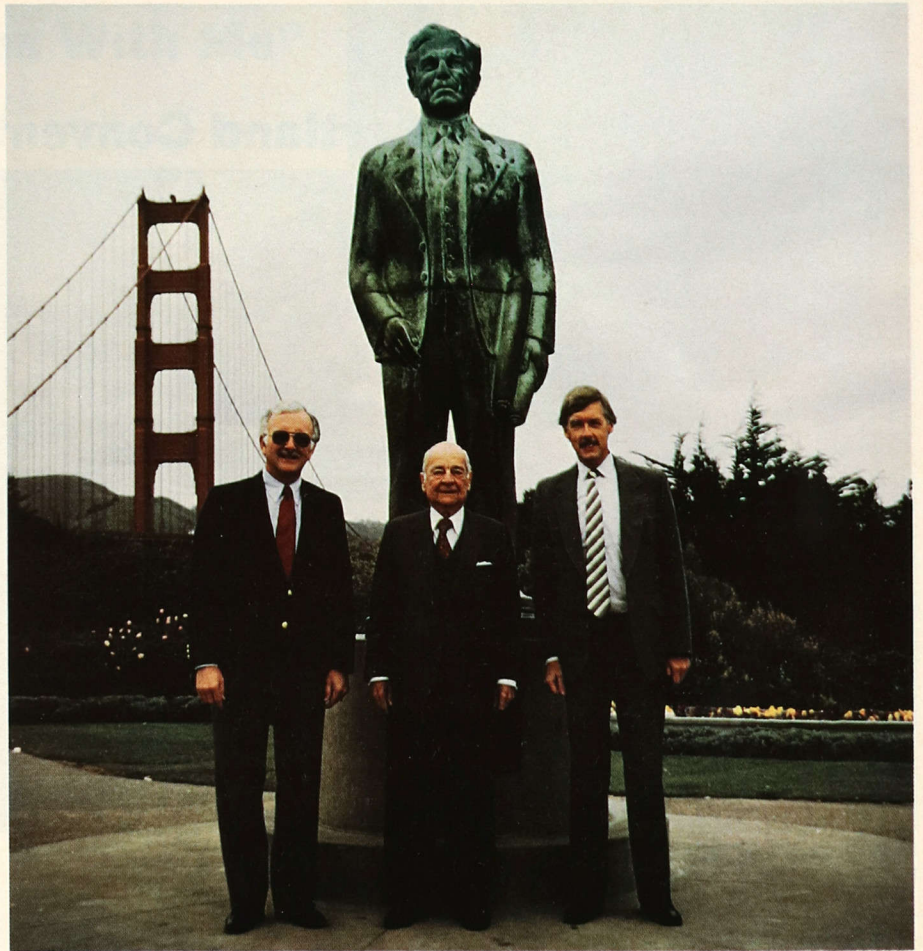
Strauss' perception of bascule bridges, where one end is counterbalanced by the weight of the other on the principle of the seesaw, was ridiculed for some time. He finally opened his own engineering company and was later given a chance to build his bridge by a railroad company that wouldn't pay him unless the bridge worked. Strauss had to build the bridge at his expense. He borrowed against his future, but was to be paid back enormously.

Word of Strauss' talents spread and he was in high demand, but it wasn't until he was 60 years old that construction began on his crowning achievement. That was January, 1933, nearly a decade after the proposal for the bridge was made. The bridge was financed with \$35 million in bonds based on a construction estimate of \$27.1 million, a figure that turned out to be .5 percent over cost. The last bonds were retired in July, 1971.

Standing in front of a statue of Strauss are brothers Lance, Mancini and H. Fraser Mills, a member of the San Francisco Alumni Association.

The Golden Gate Bridge is still the only project of its stature undertaken without federal or state funding. Today, the entire operation of the bridge is funded exclusively by auto tolls. The replacement cost of the bridge is estimated somewhere around \$600 million.

The color of the bridge is interna-



Standing in front of a statue of Strauss are brothers Lance, Mancini and H. Fraser Mills, a member of the San Francisco Alumni Association.

tional orange. Its 10 million square feet of steel were brush painted in 1937. It now takes 4 years to sandblast and paint the bridge, with the job continuously repeating itself so no rust will settle on the bridge.

With yard-thick cables stretched over

twin towers 850 feet (65 stories) in the air, the bridge floor of Strauss' brainchild can swing 21 feet out to one side with a broadside wind of 100 miles per hour.

The floor of the roadway moves up and down with every change in temperature and load. A rise in temperature causes the cable to lengthen, and consequently, the sag to increase. The most severe combination of loading and temperature would cause the floor of the bridge to rise or fall 10 feet below normal.

The completion of this unique bridge was highly anticipated by the public, and when it opened on May 27, 1937, approximately 200,000 people walked across it. Strauss undoubtedly enjoyed his stroll across the bridge; because he had never learned to drive or swim, that was the only way he could cross it alone.

A monument of Strauss stands in the shadows of the Golden Gate Bridge today, recognition of a small man with huge dreams and enormous realities.



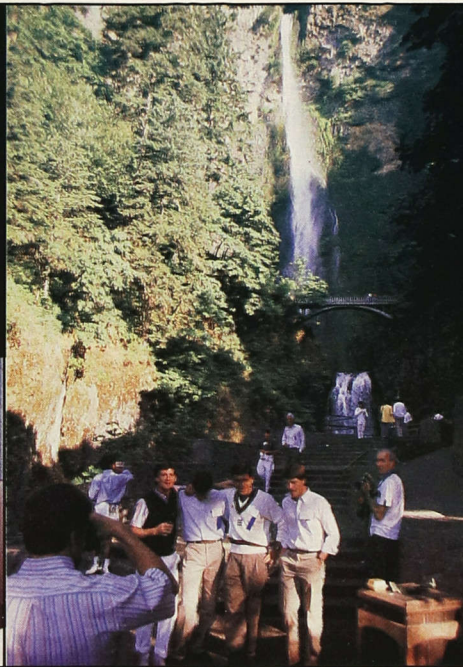
Brothers Mancini, Richard Strauss & Lance with portrait



The Portland Convention



Miss Oregon and Miss Teen Oregon Welcome SAEs



Delegates Savor Oregon Countryside



Delegates Get Down to Business

Portland, Oregon was the site of the 131st Anniversary National Convention of Sigma Alpha Epsilon, as chapter and alumni delegates converged on the Portland Hilton to "conduct the business of the fraternity."

The convention saw the election of a new Supreme Council, Ben Allen, *Miami of Ohio '60*, was elected as the new Eminent Supreme Archon, David M. Lance, *Cincinnati '56*, as Eminent Supreme Deputy Archon, William Chapman, *Oklahoma '57*, as Eminent Supreme Warden, M. Ronald Doleac, *Southern Mississippi '70*, as Eminent Supreme Herald and former Province Mu Archon Marc Franson, *Drake '77*, as the new Eminent Supreme Chronicler. Kenneth D. Tracey was re-elected as Emi-

nent Supreme Recorder for a 5th term.

Porter Underwood, *Oregon '38*, a Founder Member of Sigma Alpha Epsilon and past province Archon of Province Lambda, was elected as Honorary Eminent Supreme Archon just hours before his passing into the Chapter Eternal. Porter was instrumental in bringing the convention to Portland, and his loss will be felt dearly.

In other business, the floor passed legislation re-instituting annual dues for the fraternity's undergraduate membership, set at twenty-five dollars per man. Two-thirds of the revenue generated will be used to cover the increased operating costs of the fraternity, and the remainder will be transferred to the National Endowment Fund.

Also, charters were granted to colonies at

the University of California - Irvine, the University of California - San Diego, and the University of Maryland - Baltimore County. The 1991 National Convention location was set for San Diego, California.

But not all of the delegates' time was spent on business. The Portland Host Committee, headed by Dean Morell, *Oregon '79* worked long hours to make sure of that, arranging activities such as a Casino Night and a paddlewheel cruise down Oregon's scenic Columbia River Gorge. Both events were overwhelming successes, allowing the brothers from the many chapters represented a chance to meet each other and the leadership of the fraternity in a social setting.



Colony Reps Celebrate Acceptance of Petition

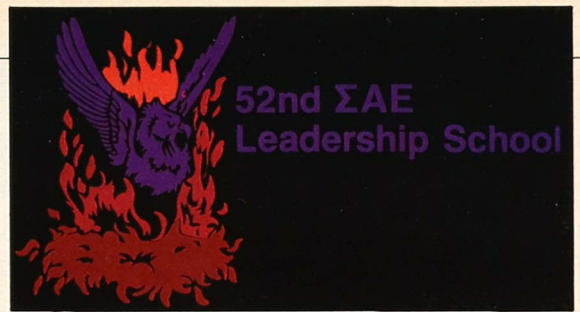


New Officers Sworn In



Viet Nam Memorial Presented to Captain Houston

"Leadership Begins With Me"



THE 52nd LEADERSHIP SCHOOL



House Corporations Officers Training

During the summer months in the college town of Evanston, Illinois, all is quiet. The impressive architecture of the Levere Memorial Temple seems to fit right in among the buildings that make up Northwestern University, its neighbor to the north, and shares in its grandeur.

Yet each year, Evanston comes alive for the first week in August, as brothers from across the country meet to celebrate a common heritage in Sigma Alpha Epsilon, and to learn how to better themselves and their chapters at the annual Leadership School.

The classrooms of Northwestern University and the halls of the Levere Memorial Temple were again filled with the voices of over 650 participants this year, as the 52nd Leadership School of Sigma Alpha Epsilon, "Leadership Begins With Me," ran from August 2-5.

Darrell Gibson, Director of Leadership Training, opened the school on Sunday,



Workshop in Temple Library

August 2, with a welcome to the undergraduates at Northwestern's Cahn Auditorium. "The classrooms will be the coolest places on campus," said Gibson, referring to the ninety-degree heat that would last for most of the week.

Participants in the school were divided into "chapters," learning units which worked together at communications and problem solving skills. Troy Eiber (Illinois Psi-Omega '89) remarked, "It was extremely interesting to meet and share ideas with ΣAEs from across the country."

This year's program also included general sessions addressing some of the most important issues facing the fraternity. Mark Stevens, a clinical psychologist from the University of Southern California, led a discussion called "I Know She Said No, But I Thought She Meant Maybe," concerning date rape and sexual abuse; and Dave



General Session

Westol again encouraged the undergraduates of ΣAE to "stand up and say 'Hey, that's wrong'" in his talk, "Hazing on Trial."

For the first time, Personal Development Seminars were included in the School, concerning everything from "Entrepreneurial Success in America" to "The Day After Graduation." Led by the Leadership School Faculty and other ΣAEs, these sessions attempted to develop the person inside of the leader and to answer some of the questions that face today's college student.

But no one element of the 52nd Leadership School of Sigma Alpha Epsilon alone could overshadow the one thing that brought it all together. As Dr. Joe Walt's "ΣAE Story" reminded us, the school was a celebration of the fraternity's heritage and its future. And that future was indeed born again this year as 662 participants learned that "Leadership Begins With Me."



Talent Night Skit



Enjoying Cool Waters of Lake Michigan



Minerva's Highway Run

Meet the ESA *(Continued from Inside Cover)*

A. There's no question about it. I'll be the outgoing ESA and Dave Lance, **Cincinnati '56**, (*Ohio Epsilon*), will be the incoming ESA. Our two chapters are only 30 miles apart. His chapter will be 100 years old, and my chapter will be 70 years old. So it will be an opportunity to tie a lot of things together. It should be a great weekend.

Q. *There are misconceptions about the Supreme Council and its responsibilities. How do you describe the duties of the Supreme Council?*

A. I can answer that with the speech I used in nominating Ken (Tracey) for Eminent Supreme Recorder at the convention. I compared Σ AE with a business organization. Each business has a board of directors that aren't necessarily employees of the company. That's the situation with us. We all have our own professions, and serve Σ AE as its board of directors. The business has a chief executive officer, which in our case is Ken, who is paid by the fraternity, and has employees under him. The Supreme Council is not paid by Σ AE. We serve because of our love and concern for Σ AE.

Q. *Is there any person who has had a big impact on you as an Σ AE?*

A. Before he went on to become ESA, Glen Nygreen, (**Washington '39**), was our Province Archon and he visited us often. I really admired him then and that admiration continues to this day. When I first ran for the council, I asked him to give my nominating speech. He has influenced me the most in Σ AE. But there have been so many others as well.

'It's very evident that Σ AE undergrads are the best group of men on campus.'

Q. *What is Σ AE's greatest strength today?*

A. There is no question that our undergraduates are our strength. In traveling around the country, it's very evident that Σ AE undergrads are the best group of men on campus. They are what makes the fraternity strong.

Q. *What is our greatest concern?*

A. The costs of chapter housing today almost makes it prohibitive to build houses like we used to. I want us to be able to provide the best help possible for chapter housing. Ideally, every chapter should have a house. And we need to help assist with the upgrade and preservation of current houses.

Q. *What advice would you give undergraduates for making the most of their Σ AE experience?*

A. Σ AE is a social fraternity, and it's important to enjoy that aspect of it, but the foremost concern of all Σ AE's should be academics.

Secondly, to enjoy the fraternity to its fullest, you have to be involved in the leadership of your chapter. That doesn't necessarily mean being EA or EDA, but being involved will make you enjoy it more, and the educational experience of being involved will help you in the years ahead.

When you're out of school, stay involved. Σ AE continues to pay dividends. It's said all the time, but you're an Σ AE for life. Through my involvement with Σ AE, I've met the people who've become my best friends.

Southern Miss brother awarded Fulbright Scholarship

For most pre-med students, acceptance to the prestigious Johns Hopkins Medical School would be reward enough for high achievement as an undergraduate.

But for David Sullivan, **Southern Mississippi '87** (*Sigma*), that hasn't been his highest honor since graduating from Southern Miss in May. He was awarded a Fulbright scholarship to study in Switzerland this fall. The Fulbright scholarship is in addition to Sullivan's distinction of being named runner-up for Σ AE's Jones-Lawrence Award, which recognizes the fraternity's top scholar.

Sullivan was a teaching assistant in the chemistry department and a research assistant in the biology department. His honors include selection for Omicron Delta Kappa, Who's Who in American Colleges and Universities, Alpha Epsilon Delta pre-med honorary, Phi Kappa Phi and Sigma Xi. He was recognized as the Greek senior with the

highest grade point average by the Southern Miss Interfraternity Council.

On the national level, Sullivan has been named an Academic All-American and is listed in Outstanding Young Men of America, the National Dean's

List and Outstanding Greeks of America.

During the summer of 1985, he was awarded a German Academic Exchange Service summer scholarship to study in West Germany.

Kansas brother studies abroad

George Ranallo, Kansas Alpha, hasn't spent much time at the chapter house at the **University of Kansas** in the past year. Last fall, Brother Ranallo was half-way across the world in Denmark studying at the University of Copenhagen, one of the premier international business schools.

Ranallo's education included a one-week study tour of Warsaw, Poland, and East Berlin, East Germany, and another study tour of Moscow and Leningrad in the Soviet Union. Ranallo's tour of Europe also took him to Munich, Amsterdam, Vienna, Salzburg, Innsbruck, Basil and Lusanne.

In the spring, Ranallo interned with Kansas State Senator Ed Reilly, a member of the Kansas Alpha alumni commission. Brother

Ranallo said next spring he hopes to intern with NATO command in Brussels.



Union College brothers capture ΣAE World Series

The Eminent Supreme Champions of softball within ΣAE are the brothers from the Tennessee Eta chapter (**Union College**).

In one of the biggest summer rush functions in the country, the New Orleans Alumni Association sponsored the 2nd Annual ΣAE World Series Softball Tournament, along with a party for potential members.

The softball gala has grown beyond the greatest expectations the New Orleans alumni ever had, according to **Geary Mason**, secretary of the local alumni association. On June 6, the 800-member group hosted 12 teams from Tennessee, Virginia, Texas, Mississippi Alabama, and Louisiana competing - and rushing - for ΣAE.

After the tournament, a rush party was held at the home of Brother **John Daly** for high school seniors in the New Orleans area heading for schools with ΣAE chapters. Representatives from more than 25 ΣAE chapters and more than 100 prospective members were in attendance.

The New Orleans area alumni have been entertaining prospective ΣAEs for five years, and just instituted the softball tournament last year.



Union College gave up just one run in sweeping through the tournament unbeaten. With Brother **Rod Parker** leading the way, Union beat the Tiger Veterans, a team of LSU alumni, 7-1 in the finals. In the consolation bracket final, the Alabama Alums defeated the Mississippi Sigma (Southern Mississippi) Alumni Association 14-3. Taylor Dawson of the Alabama Alums was the tournament's Most Valuable Player.

ΣAE World Series Tournament Coordinator **Murray Calhoun** and **Geary Mason** take a break from softball action. Anyone wishing to order the **official t-shirts** shown can call Mason at (504) 866-6683. The shirts are 100 percent cotton, available in all sizes and cost \$10.

Entry information on next year's tournament will be featured in the Spring issue of *The Record*.

Penn State Alumni Association headed by ΣAEs

The hierarchy of the **Pennsylvania State University** Alumni Association is filled with ΣAEs, and the efforts of these brothers gained them nation-wide attention in the area of alumni relations.

The alumni association is led by Executive Director William J. Rothwell, Ph.D., **New Hampshire '68 (Beta)**. The associate executive director is Bryan Van Deun, Ph.D., **Franklin College '69 Indiana Alpha**. The head of the Division of Development and University Relations is G. David Gearhart, **Westminster College '74 (Missouri Gamma)**.

The association received the 1987 Grand Gold Medal from the Council for the Advancement and Support of Education, for the top alumni relations program in the country for the second year in a row, the first time an institution has won the award twice

in a row. Gold medals were also won in the categories of Alumni Decade Achievement and National Alumni Admissions Program for Alumni Service to the Institution.

Brothers from the **University of Ne-**

braska will be pleased to know that Brother Van Deun was recently named the new executive vice president and chief executive officer of the Nebraska Alumni Association.

"Dakota Man" calendar

The "Dakota Man" calendar has replaced the Sports Illustrated calendar — in North Dakota at least.

Through F.O.O.D., Farmers Of Ongoing Determination, a group of North Dakota farmers are trying to raise money for North Dakota farmers through the "Dakota Man" calendar. The calendar features 14 young farmers depicting scenes from rural America.

Three of the 14 men appearing on the calendar are North Dakota Beta (**North**

Dakota State) alumni: Roger Jaeger (Mr. February), Ted Hanson (Mr. October) and Perry Miller (Mr. December). Jaeger is president of F.O.O.D. and a co-founder of the calendar. In an article in the *Minneapolis Star and Tribune*, Jaeger said, "We hope to raise \$10 million eventually to help 100,000 families."

The calendar is targeted at younger women, and the calendars are selling at an incredible rate. The *Today Show* picked up the hype and featured the group's efforts on the NBC program.

Alumni News Briefs

PAUL JACOB, **Mississippi State '44 (Theta)**, a Past Eminent Supreme Archon, was named Mississippi State's 1987 Alumnus of the Year. Jacob, an electrical engineering professor, was honored with the highest accolade MSU bestows on its graduates. The award recognizes those "who have distinguished themselves by making some significant contribution to human or institutional progress."

NEAL BERTE, **Cincinnati '62 (Ohio Epsilon)**, will be the president of the Greater Birmingham (Alabama) Area Chamber of Commerce in 1988. Berte, president of Birmingham-Southern College, was featured in an article in the *Atlanta Constitution* for resurrecting the 1,725-student, Methodist-affiliated, liberal arts college. Enrollment and alumni contributions have increased dramatically since Berte took over. Berte is a Past Honorary Eminent Supreme Archon and a member of the Σ AE Foundation Board of Trustees.

RAY J. ARTIGUE, **Arizona State '76 (Beta)**, has formed Artigue and Associates, Inc., a full-service marketing communications firm, with specialty in public relations programs. Artigue is a former director of leadership training for Σ AE.

GEORGE W. HAIGH, **Dartmouth '53 (New Hampshire Alpha)**, chairman, president and chief executive officer of Trustcorp, Inc., a bank holding company with assets of more than \$4 billion, was named Toledo's Executive of the Year by the *Toledo (Ohio) Metropolitan* magazine. Haigh, 53, was a T.H.E. Award winner for finance in 1985.

MARC HILL, **Texas Christian '73 (Beta)**, was selected as the Fort Worth Jaycees' 1986 Outstanding Young Leader. Hill's efforts with the reinstallation of Texas Beta can be seen in this issue.

GENE CORRIGAN, **Duke '52 (North Carolina Nu)**, was selected as the new athletic com-

missioner for the Atlantic Coast Conference. He had been athletic director at Notre Dame since 1981.

GENERAL JACK CHAIN, **Denison '56 (Ohio Mu)**, was featured in the Denison Alumni magazine last spring. The subtitle of the article was "General Jack Chain: From Σ AE to SAC." Chain is an Air Force four-star general, and as commander-in-chief of Strategic Air Command, he leads a fighting force of more than 134,000 people. In the article, Chain said his undergraduate brothers in Σ AE "were like an extended family." Chain's big brother at Denison, **Al Nagy**, is now dean of Culver Military Academy in Culver, Indiana.

WALTER M. SMALL, **Allegheny '11 (Pennsylvania Omega)**, received awards from Σ AE and his alma mater over the past year. At Pennsylvania Omega's centennial celebration, Small was honored for his service to the fraternity. Small, who celebrated his 100th birthday in July, was also given the Allegheny Gold Citation for his contributions to the college.

DOUGLAS J. BURGUM, **North Dakota State '78 (Beta)**, is an entrepreneur extraordinaire in a state that ranks 49th in number of entrepreneurs per capita. Burgum, 29, is president of Great Plains Software, Inc., an established leader in the accounting software industry. Burgum has received the Greater North Dakota Association's Business and Industrial Development Award and was listed in "People to Watch" in *Fortune* magazine.

KYLE ROTE, JR., **Southern Methodist '51 (Texas Delta)**, appeared on *Second Look*, a program aired on the Christian Broadcasting Network that enables the studio audience to interview Christian athletes.

MARK FINLEY, **Arizona '34 (Alpha)**, a Boston journalist/playwright, has been recognized by the Freedoms Foundation of Valley Forge, Pennsylvania, with

an honor certificate for individual achievement.

HARRY BLOMGREN, **Beloit '60 (Wisconsin Phi)**, was elected vice chairman of the American Advertising Federation Council of Governors, the largest advertising trade association in the country. (Read about the reinstallation of Blomgren's chapter in this issue.)

CAPTAIN KELSEY STEWART, **Miami '60 (Ohio Tau)**, received the Admiral Sidney W. Sowers Award, which recognizes an outstanding Naval Reserve Officers Training Corps alumnus from the Oxford, Ohio campus.

WILLIAM W. WATSON, **Tulane '57 (Louisiana Tau-Upsilon)**, is the 87th president of the Louisiana Bankers Association. In an article in *The Louisiana Banker*, Watson talked of how important Σ AE was to him, and the writer told of how Watson can still recite the True Gentleman.

MICHAEL S. MC MANUS,

Tennessee '72 (Kappa), was named the 1987 Southern Honor Agent by The Old Guard — the organization of Agency Managers of The Equitable Life Assurance Society of the United States. The award recognizes the most outstanding agent in each region of the country.

MYRON D. CALKINS, **Washington State '42 (Beta)**, former Director of Public Works in Kansas City, Missouri, has been named an Honorary Member of the American Public Works Association. Honorary membership is the highest award APWA can bestow and is conferred on not more than one person annually. Brother Calkins is a Founder Member of the Σ AE Foundation.

CAPTAIN JOHN M. WILKINS, **Oklahoma '57 (Kappa)**, retired from the United States Navy after 30 years of service. Capt. Wilkins was Deputy Commander of Naval Reserve Readiness Command Region 18, headquartered in Olathe, Kansas.

Alumni Classifieds

HELP WANTED

NOTE: Volunteers need not be members of chapters which need your help. Any interested Σ AE, faculty members or administrator is encouraged to lend a hand.

WANTED: T.H.E. AWARD nominations. Alumni brothers who are tops in their professions are recognized annually with **The Highest Effort Award**. You may nominate any brother who has made a significant contribution to society through their professional life; exemplifies ideals of Σ AE & The True Gentleman; & whose service to mankind represents model for brothers to follow. Nominations must be received by December 15, 1987. Send letter of nomination (include biographical material on nominee) to: Ken Tracey, The Highest Effort Award, Sigma Alpha Epsilon Fraternity, P.O. Box 1856, Evanston, IL 60204. Please include sender's name, address & phone number.

CREIGHTON UNIVERSITY chapter seeks interested alumni. Brothers in Omaha area who would like to offer advisory assistance should contact Terry Grennan, 605 South 57 St., Omaha, NE 68106; call (402) 390-0300 or (402) 551-4117. Or call Todd Mullins at the national fraternity office, 312-475-1856.

FOR SALE: Antique male & female Σ AE badges. Would like to sell 10K gold badges from 1918-1920; ladies' badge has pearls. Special ordered; no engraving on back. \$175 for set. Call Maxine Mahnick evenings, (614) 846-9259.

KANSAS STATE alumni are invited to 75th Anniversary Reunion. Kansas Beta brothers will gather in Manhattan, KS, March 25-27 for a weekend of brotherhood and fun. Watch your mail for details.

ST. LOUIS Area Alumni Association has been reorganized. Interested area alumni may contact Keith Shaw, (314) 863-8820; or Robert Latta, (314) 576-1929.

VOLUNTEERS sought to find lost brothers. The national fraternity staff continually searches for "lost brothers" who left no forwarding address. Helpful alumni have already "found" many "lost" brothers, thereby saving the fraternity significant mailing costs. To help find your chapter's lost brothers, contact the Data Processing department at the national fraternity office.

ADVERTISE in The Record. The Record seeks advertising from brothers to help offset costs and to enhance the publication. Interested businessmen contact Ken Tracey at the national fraternity office, 312-475-1856.

Cancer victim knows the meaning of fraternity

Reprinted with permission from *The Fresno Bee*

By Guy Keeler

Four years ago Jerry Hawks walked into the Sigma Alpha Epsilon house during rush week to drink beer. Today his fraternity brothers at Fresno State University are still filling his cup, but with a different spirit.

Hawks is dying. The cancer that struck his brain last summer has spread to his spinal column.

"There are tumor cells in my spinal fluid," said the 23-year-old physical therapy major from Santa Rosa.

Hawks said one of those cells recently attached itself to his backbone and developed into a malignant tumor. Doctors are fighting the tumor with radiation but even if the treatment is successful there is the possibility other tumors could develop.

"One doctor has told me there is no cure," said Hawks. "They say treatment will prolong my life but they won't give me an estimate on how much time I have left."

Despite this prognosis, Hawks is not given to self-pity. He says the love and support he is getting from his fraternity brothers is making his life special.

"I was not allowed to go back to school last fall," he said, because he needed treatment for tumors discovered in his brain last summer. "I kinda left unnoticed."

But the men of Sigma Alpha Epsilon refused to let Hawks slip away.

While he was taking radiation and chemotherapy treatments at the University of California Medical Center in San Francisco, they sent cards and letters and phoned him regularly.

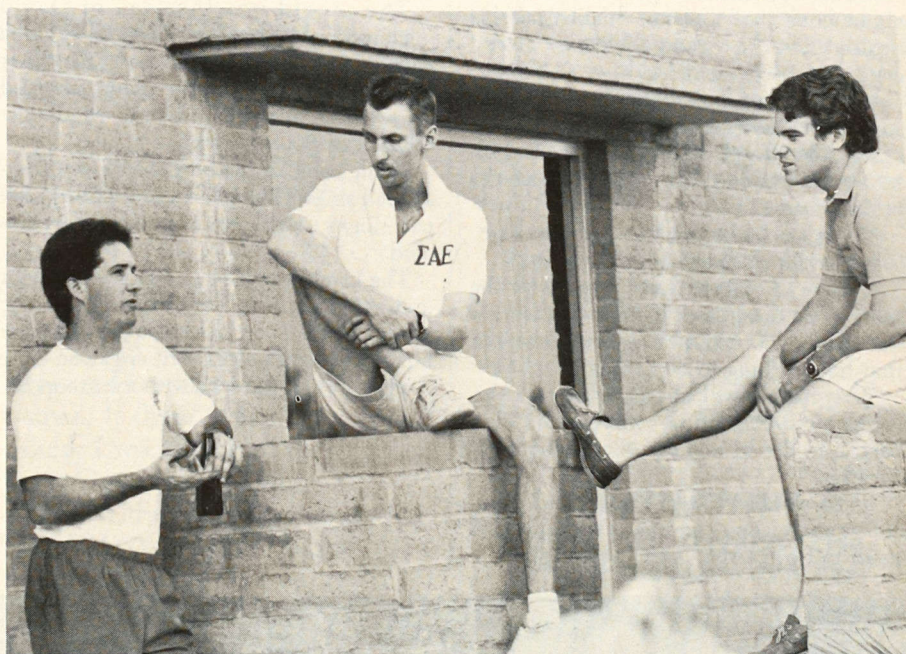
Then, in November, they put together a bike-a-thon to Santa Rosa that raised \$6,000 to help pay their brother's medical expenses. They put the money into a trust account for Hawks and intend to make the bike-a-thon an annual event.

In the initial trip last fall, four cyclists, along with a support crew, spent 2½ days riding from Fresno to Santa Rosa. Fraternity members obtained sponsors for each mile ridden.

But the trip was designed to do more than raise money.

"We figured if we rode from Fresno to Santa Rosa it would signify we were reaching out to Jerry," said Jim McGonigle who, along with Rusty Deardorff, came up with the idea for the bike-a-thon.

Altogether, nearly 30 fraternity members



Brothers McGonigle, Hawks & Smith

Fresno Bee photo by Richard J. Darby

and friends made the bike trip. They even took along fixings for a barbecue when they reached their destination.

"Jerry came down the road to meet us," said McGonigle, a 22-year-old finance major from Concord. "We hadn't seen each other since August."

"It was really emotional. He gave each one of us a humongous hug. There were a lot of tears."

"I'm not so sure I would have come back" [to Fresno State], said Hawks, reflecting on the effects of his illness. "But I had so much love and support from these people. They were an inspiration to me."

At the beginning of the spring semester, Hawks moved into an apartment near the Sigma Alpha Epsilon fraternity house and re-enrolled at FSU. For several weeks he courageously attended classes.

But the side effects of chemotherapy and the need for more treatment in the Bay area forced him to drop out of school again.

"Jerry's mother died of cancer right after he pledged the fraternity," said Mike Miller, 23, a public relations major from Fresno. (Miller was in the same pledge class with Hawks and now is president of the fraternity.)

"This last semester he's really had it rough. It's unbelievable how strong the guy is."

"It's tough to see him slipping," said McGonigle. "Jerry was the house manager when I was a pledge. He did such an outstanding job that my class gave him the 'Mr. ΣΑΕ' award, which is given to the one who most exemplifies the standards we're to live up to."

"Jerry cares for other people more than for himself. He never talks about people behind their backs. He's honest with you."

Although he no longer attends classes, Hawks continues to take an active role in his fraternity.

"I go to everything," he said. "After all they've done for me I could never give back enough."

"We had a fund-raising pancake breakfast," said Miller. "Jerry was there at 7 o'clock [to work in the kitchen]."

"A lot of other guys didn't even make it because they'd stayed up late drinking. To say Jerry is an inspiration is really an understatement."

Miller, McGonigle and Dalton Smith, who drove the lead car and was part of the support crew during the bike-a-thon, said

Hawks' illness has affected attitudes of Sigma Alpha Epsilon members.

"People are much more aware that at any time in life things can happen to you that you don't have control over," said Smith, 24, an engineering major from Kingsburg.

"It's weird," said McGonigle. "Everyone feels helpless. Jerry had everything going. He was living life to the fullest."

"There's an increased consciousness of life itself," said Miller. "It makes you put things in perspective."

As for Hawks, he says he is thinking about quality of life, not quantity. If his health allows it, he would like to attend classes at FSU next fall.

But he says he also has thought about stopping chemotherapy to escape its debilitating side effects. Throughout the ordeal, he says his fraternity brothers have been the best medicine.

"They've been my family," he said. "They're always there to pick me up."

"I came to Sigma Alpha Epsilon for the party — to drink beer. That's what I knew fraternities for. But after a week I realized that had nothing to do with it."

"Jerry has always been real active in cultivating our brotherhood," said Smith. "He's been a leader in making our brotherhood stronger."

"It seems like this thing has pulled us together and made us stronger as a house. It's made our friendship with Jerry closer."

19 brothers meet in Miami to record ΣAE album

While most brothers love to gather and sing our favorite ΣAE songs, the problem is that most of us have voices that could crack a record. This summer in Miami, 19 brothers met to record an album of ΣAE songs the way they are supposed to sound.

The record was the idea of David Clemmons, **University of Miami (Florida Alpha)**, and took place May 15-22. After four days of rehearsal, the group recorded for two days at the First United Methodist Church of South Miami.

While some of the brothers were accomplished singers like Clemmons, others took part simply to have fun and perform on a record.

The Yamaha and Sony digital equipment used for recording were loaned from the Miami Opera and the University of Miami Jazz Vocal Department. The engineer, Greg Hodge, was on the road with the group Ex-

pose and was flown in to work exclusively on the project.

Clemmons said the experience was "wonderful and full of fun and brotherhood."

The voices recorded on the album are (pictured left to right) Clemmons, Mike Sheehan (*Florida Alpha*), Norman Berry (*Florida Alpha*), Britt Prentice (*Florida Alpha*), Tim Vaughn, **Middle Tennessee State (Tennessee Beta)**, Derek Fine (*Florida Alpha*), Louis Sierra (*Florida Alpha*), Frank C. DeBole, **Florida State (Florida Epsilon)**, Charles Kingery (*Florida Alpha*), Howard Forrest (*Tennessee Beta*), J. Danny Pearcy, **Florida Southern (Florida Gamma)**, Joe Poindexter (*Florida Alpha*) and Christopher Jacobs (*Tennessee Beta*). Those not pictured are Erik Hwey (*Florida Alpha*), John Pfeifer, Florida Alpha Alumni Association and Scott Liotta (*Florida Alpha*).

The recording of an album — ΣAE style



'I want to thank my brothers for saving my life'

Dear Brothers:

My name is David A. Knappenberger, badge 203835, and I am currently an active at Arizona Gamma (Northern Arizona). I am writing this letter in response to the article on dry rush in the summer edition of *The Record*.

In February, I realized that I had a serious drinking problem and needed help. Being unable to leave school for help, I turned to my brothers at Arizona Gamma for help — help that I so desperately needed. Not only did I receive help, I received total understanding and concern. This to me was all the support anyone could ask for.

I now realize just how strong brotherhood can be, and how lucky I am to be a brother in such a large and caring family. Needless to say, I haven't had a drink since. If there is any possible way I can have my story published, I would like to do it. Not only to thank my brothers at Arizona Gamma, but to let other brothers know that they can reach me if they ever have any questions concerning alcohol abuse. I would be more than happy to help a brother the way my brothers helped me. They saved my life.

As for Dry Rush, I think it is a great idea. Not all fraternity events have to be alcohol related to be successful or fun. There are plenty of parties or events a chapter can plan for rush to get an accurate evaluation of a rushee's character.

I am looking forward to seeing all my brothers at Leadership School in August. Let's make it the best yet!

DAVID A. KNAPPENBERGER
2 South Colorado
Flagstaff, AZ 86011
(602) 774-6497

Syracuse chapter congratulated

I would like to congratulate [the New York Delta chapter] on being the recipient of the "Fraternity Sportsmanship Award."

As you know, the Greek System at Syracuse University has a potent influence on the quality of student life, and I applaud your house's contribution to enhancing life on campus.

My congratulations to you.

PETER M. BAIGENT
Assistant Vice President
Student Programs
Syracuse University

Louisiana Alpha brothers thanked

The American Heart Association would like to express our sincere thanks to Sigma Alpha Epsilon Fraternity at the **University of Southwestern Louisiana** for the successful golf tournament they put on for our benefit. A special word of appreciation to John Marion and Emile Regard for their tireless efforts in organizing the event. During this time of year with emphasis on volunteers, it is encouraging to see young people get an early start on volunteer activities such as this.

SHARON MAULDIN
Area Director
American Heart Association

Judge Nippert's widow writes in his memory

One day while my daughter Ecetra and I were reflecting upon the wonderful works of her father and of his dedication to the goals of ΣAE and of his benevolent help and interest in encouraging youth on to a proper course in life, Ecetra burst out with love and deep respect of her father's high ideals, and said, "Oh mother, please send to father's fraternity a thousand dollars." And so, here it is — I send this offering in good cheer — happily and sacred to the memory of my husband and the father of his and my two children, Ecetra Nippert Ames (Mrs. Anthony M.) and Alfred K. Nippert, Jr.

May it be used to the glory of God and to the benefit of some great need of ΣAE.

Thank you for giving this your kind interest — and may God Bless this fraternity in and for Christ's sake —

ECETRA A. NIPPERT
(Mrs. Alfred K. Nippert)

NOMINATIONS

**for T.H.E. Award (The Highest Effort) are due
December 1, 1987.**

**Presentations are made at
the time of Founders Day,
March 9, 1988.**

The Record wins national awards

The Spring issue of *The Record*, which featured the cover story "Sexual abuse on campus; Where is The True Gentleman today?", took three first place awards and an honorable mention in the awards competition of the national College Fraternity Editors Association.

The cover won two firsts: One category was judged by graphic design experts; the other was judged by the association's members. The cover of the Spring issue features a black, white and red illustration of a gentleman in a tuxedo looking through opera glasses. The illustration was done by Chicago illustrator Diane Johnson.

The article on sexual abuse, written by ΣAE Director of Communications Tracey Stoll, was selected for first place in the feature article category.

The article's layout was also cited for an honorable mention. The judges commented that they liked the use of the "surgeon general warning" style used throughout the story.

Brother praises *The Record* on sexual abuse issue

Over the years I have kept close bonds and ties with both ΣAE and the fraternity world via *The Record*. Having a daughter away at school (University of Michigan) I found your "Sexual Abuse on Campus" article informative; sent the issue on to her for her consideration.

Along with the lasting friendships made at Florida Beta, The True Gentleman has been a lasting values statement that even today I frequently recite. Its values have stood me well in personal, social and business environments.

I was especially proud to be an ΣAE, of its leadership and *The Record* for being in the forefront of both the collegiate and social fraternity communities.

ROY E. MATHIS
Florida State '61
Florida Beta

Wyoming ΣAE might have been 'Untouchable'

Wyoming Alpha *might have had* a member in Brother Eliot Ness's "Squad." I know John Bugas, ΣAE graduate of Wyoming Law School, headed to the Chicago area and was mentioned in the press as active in reducing the bootleg gangs and crime in general. He wound up with Ford Motor Company and was able to help settle an angry strike against the Ford Company and became President. He retired and then died in Wyoming.

C. H. "OKIE" BLANCHARD
Wyoming '25
Wyoming Alpha

ΣAE Lyons

On November 22, 1986 I was honored along with my brother, Michael, to be initiated into this great fraternity of Sigma Alpha Epsilon. What made this day so special was the fact that we were given the opportunity to initiate our father with us as an honorary initiate of this fraternity. This was one of the proudest moments of my life to be initiated with my older brother and father as well. In addition, another brother of mine, William Lyons, Jr., (*California Theta '79*) attended the initiation ceremony.

With only one year left as an undergraduate, I have many memories that I will cherish for a long time. Yet most of all, having two older brothers, a sister and a father sharing part of this fraternity with me signifies the true meaning behind brotherhood.

In the bonds,
EDWARD LYONS
Santa Clara '88
Cal Phi



Lyons: William Sr., William Jr., Michael, Edward & Joanne

Auburn ΣAE looks for lost 'buddy'

Please help me locate Julian Motley, my high school buddy and Auburn University roommate.

Julian pledge ΣAE at Auburn in 1941 or 1942. Julian and I went into the service in 1942 and lost contact. Julian did not return to Auburn to graduate. (May have graduated in or near Denver, Colorado or Atlanta, Georgia.)

Thanking you in advance.
CHARLES A. ELLIS
1910 SW 35 Terrace
Miami, Florida 33175

**Photos and News for the
Spring issue (April) of The
Record is January 15, 1988.**

DEADLINES

**Applications for National
Office staff positions of Edu-
cation and Leadership Con-
sultants is December 1, 1987
— employment to com-
mence June 1988. Write or
call Scott Haggard at the
National Office (312-475-
1856) for information and
application forms.**

EDITOR'S NOTE: The ΣAE fraternity of-
fice welcomes assistance in locating "lost"
brothers. If you would like to help, please
contact Mrs. Frances Gillan by calling
1-800-233-1856.

Brother learns: 'keep your priorities straight'

To the brothers of Sigma Alpha Epsilon, especially the new brothers:

I regret that I am not able to be with you all tonight. Once again, the burden of schoolwork has prevented me from attending the meeting tonight.

This has been the case for most of this semester and will continue to be the case next semester. I am not exactly happy with this fact but it is a consequence of my own actions.

After pledgship is completed, the desire to be a good brother can sometimes overwhelm an individual. This desire can easily become a number one priority in one's life. The new brother puts school and work on a low priority and concentrates on becoming

a well-respected brother in the house. It is great when an individual wishes to excel and become the best brother he can. It is not great when that individual flunks out of school or loses a job in the pursuit of that goal. I have seen many brothers lose sight of their priorities, including myself.

The past semester for me is a result of my earlier actions in the house. I wanted to be a respected brother. After a rather shaky pledgship, I focused all my energy on becoming a respected brother. I took easy classes and only got adequate grades.

Now I find myself a year from graduation, with all my hard classes left for me to take and a G.P.A. that is lower than it should be. I haven't been able to be as active as I would

like, because now I'm making up for the responsibility of the past three years.

The point I want to make to all the brothers in the house is this:

- Keep your priorities straight.
- Balance out your time between the house, school, and work.
- Don't let your life or grades slip in the pursuit of Brother Hero.

I wish I would have done all of the above, and if I would have, I probably would be with you tonight.

Phi Alpha and love to all of you,
PETE CROSIER
San Jose State '87
California Zeta

ΣΑΕ NEWS-GRAM

ALL THE LATE-BREAKING NEWS FROM 1856 SHERIDAN ROAD

PORTLAND CONVENTION SMASHING SUCCESS — Over 400 delegates, alternates, guests, spouses and friends gathered together for a great four days in Portland, Oregon. The host committee did a superb job in making everyone feel welcome and excited about being together. Highlights included a beautiful sternwheeler trip through the incredible Columbia Gorge east of the city, a casino night offering thousands of dollars worth of prizes to lucky delegates, and the special Viet Nam memorial gift to the Levere Memorial Temple.

The memorial is a bronze bust of a Marine Corps Viet Nam Veteran in the likeness of Past ESA J. Clarke Houston, III. A Marine honor guard entered the ballroom at the conclusion of the Convention Banquet and unveiled the bust in front of Clarke, Linda, Gregory and Jason Houston. There wasn't a dry eye in the house. It was a very fitting and emotional presentation honoring Clarke.

New **officers** of the fraternity were elected on Friday, June 19: our new ESA is Ben Allen; ESDA David M. Lance, ESW William Chapman; ESH Ron Doleac, and the new Eminent Supreme Chronicler is Mark Franson. Ken Tracey was elected ESR.

Porter Underwood was elected **Honorary Eminent Supreme Archon**. Porter died less than three hours later of heart failure. He had been in the hospital all week and had hoped to get out in time to attend the Convention Banquet. We greatly regret his passing and will miss his service as Honorary ESA. He was installed posthumously at the banquet. Porter had served for many years as Archon of Province Lambda and as an advisor to Oregon Delta (Lewis & Clark).

The **Distinguished Service Awards**, ΣΑΕ's highest honor, were presented posthumously to James D. Peterson, past ESA; Fred Phelps, E. New Mexico '64; G. Robert Hamrdla, Stanford '60; and Eddie Knowles, Ohio Sigma '27.

New **Charters** were approved for colonies at the University of Maryland-Baltimore County to be installed on October 10 as Maryland Omicron-Pi; University of California - San Diego to be installed as California Chi on October 24; and the University of California - Irvine, to be installed on November 21 as California Psi.

In other convention action: a new National Dues of \$25 per active member per year was adopted; The 1991 Convention site was selected as San Diego, California (the '89 convention was previously selected as Cincinnati, Ohio); Province Nu was redistricted as follows, New York and New Jersey will remain in Nu and eastern Pennsylvania, Maryland and Delaware will be in Province Mu-Pi; and brother Ed Crump, Washington City Rho '58, was elected to a ten-year term on the National Endowment Fund Board of Trustees.

The **special guests** of the convention were Mrs. Emmett B. Moore, recently widowed by Past ESA Emmett B. Moore, and Mrs. Ann Bothwell, widow of past Honorary ESA and foundation trustee Lindley Bothwell. Brother John Underwood and Kathy Rightmire, son and daughter of Honorary ESA Porter Underwood, were our guests at the banquet, which was dedicated to the memory of Porter.

CONSULTANT ASSIGNMENTS FOR 1987-88

Mike Sophir:	Provinces Chi, Epsilon, Zeta, Nu and Mu-Pi
Jay DeWitt:	Provinces Kappa, Xi, Upsilon, Iota and Eta
Steve Cady:	Provinces Alpha, Sigma, Mu, Omega, and Delta
Fritz Kruger:	Provinces Omicron, Theta, Rho, Gamma and Psi
Todd Mullins:	Provinces Lambda, Nu-Epsilon, Beta, Phi, Tau and Pi

AWARDS PRESENTED AT 131ST ANNIVERSARY NATIONAL CONVENTION

Excellence in Scholarship:	Lafayette
Most Improved Scholarship:	Missouri
Jones-Laurence Award to Most Outstanding Scholar:	Russ Cohen, Arizona '87

Besser-Lindsey Award (Outstanding Scholar, Athlete, Leader)

Donald Birks, Rensselaer Poly	Ken Fleishman, Bucknell
Robert Amota, Kentucky	Carmen Romeo, Worcester Poly
Nels Carlson, Oregon State	

Outstanding Eminent Archons:

Chris Delaney, Occidental	Phillip Parker, Kentucky
Andy Flanagan, Nevada-Reno	Joseph Parrish, Troy State
Alan Hoffman, Lafayette	Tom Taylor, San Jose State
Daniele Mariani, GMI	Steve Valentino, Rockhurst
Mike McCormick, Ball State	William Welty, Centre
John Newton, Alma	Lee White, N. Colorado
Eric Nickel, Long Beach	

Outstanding Chapter Advisors:

Fred Langton, Puget Sound
Robert Ross, N. Colorado
Leland Park, Davidson
Dennis Gibson, Ball State

Tim Culhane, Centre College
Dr. Thomas Stafford, North Carolina State
Dr. Richard Crooks, Furman
Col. William Woods, Colorado State

Outstanding House Corporation: Worcester Poly

Outstanding Area Alumni Association: San Francisco

Outstanding Chapter Alumni Association: Morehead State

Outstanding Alumni Newsletter: Detroit

Outstanding Chapter Newsletter (Typeset): South Dakota State

Outstanding Chapter Newsletter (Non-typeset): Maryland

Rex Smith Award for Chapter Efficiency: South Dakota State

John Baugh Award for Outstanding Pledge Programming: Louisiana Tech

Excellence in Community Relations: Ball State

Robert Cousins Outstanding Rush Programming: Colorado State

Outstanding Chapter Housing: Worcester Poly

Most Improved Chapter Award: San Jose State, California State Los Angeles, Ball State, General Motors Institute, Missouri, and Nevada-Reno.

Chapter Achievement Award: (Best Chapters Award)

Birmingham-Southern

Arizona

Long Beach

Cal Poly

Colorado State

Central Florida

West Florida

Illinois

Ball State

Centre

Louisiana Tech

Worcester

General Motors Institute

Minnesota

Rensselaer

Oregon State

Lafayette

Bucknell

Pittsburgh

Winthrop

South Dakota State

Tennessee Tech

Tennessee

Puget Sound

Wyoming

William & Mary

ZEAL AWARD GOES TO FLORIDA CHAPTER — The John O. Moseley Zeal Award announced at the 52nd Leadership School went to Florida Sigma at the University of West Florida. Alabama Iota at Birmingham Southern College, Kentucky Kappa at Centre College, Massachusetts Delta at Worcester Poly, Tennessee Kappa at the University of Tennessee and Washington Gamma at Puget Sound were honorable mentions.

ΣAE'S TOP SCHOLARS — Winner for the Jones-Laurence Award for Scholastic Achievement is Russell Cohen, University of Arizona '87; Runners-up: Robert Newkirk, University of Illinois '87, and William Sullivan, University of Southern Mississippi '87.

662 ATTEND 52ND LEADERSHIP SCHOOL — A close runner-up to ΣAE's 51st Leadership School (which had the largest attendance ever with 707 delegates), this year's total included 588 chapter delegates, 45 colony delegates, 9 house corporation officers, and 20 chapter advisors. 163 chapters were represented and 12 colonies/interest groups. Our total attendees thru 52 schools: 17,497. Both the seminars and guests speakers drew large attendances and a good time appeared to be had by all despite our hottest summer and hottest Leadership School on record.

NEW FOUNDATION TRUSTEES — We welcome two new members to the ΣAE Foundation Board of Trustees. John Dillingham (Missouri '66) is Vice President of Garney Co., a heavy utility construction company operating in the midwest. Brother Dillingham resides with his wife, Nancy, and two sons in Kansas City, Missouri.

Phillip M. Knox, Jr. (Cal-Berkeley '44) retired as Vice-President and Corporate General Counsel of Sears Roebuck & Co. in January 1987 after 25 years of service and has returned to California to practice law. Mrs. Knox, Joan Sutton Knox, is, coincidentally, a trustee of Alpha Delta Pi Foundation. The Knoxes have two adult children and two grandchildren and reside in Sacramento.

NEW PROVINCE ARCHONS — When Marc Franson was elected Eminent Supreme Chronicler at the Portland Convention, William Sechter was appointed to replace him as the Archon of Province Mu (Illinois). Province Nu was split by the convention and a new Province Mu-Pi was born and will govern Maryland, Pennsylvania, and Delaware. James G. Sakers is the Province Mu-Pi Archon. The new Province Nu Archon is now Jonathan K. Witter (New York and New Jersey). The Province Sigma (Texas, Arkansas, Oklahoma) Archon is now Curtis R. Frasier, who has taken over for Mark Smith.

NATIONAL STAFF CHANGES — Zan Hefner will supervise the Risk Management Program and the Levere Memorial Temple ... Tom McCarthy has joined our staff as the new Director of Alumni Services/Housing.

Dave Schott, former Assistant Director of Chapter Development, has left us to attend Pittsburgh School of Law. Tracey Stoll, former Director of Communications, has left our staff to seek her fortune in Southern California. Jeff Kinzler, Director of Annual Giving, leaves us next month. Jeff's assistant Carolyn Zhiss will replace him. Our best wishes go to all of them.

NEW RESIDENT EDUCATION ADVISORS NAMED — REAs for 1987-88 are Charlie Rhodes, Kansas; Allen Hughes, South Carolina; Larry Schott, George Washington; Philip Cunningham, Purdue; Daniel Dismukes, Auburn; Peter J. Smith, Willamette; David A. Ethridge, Davidson; J. Wes Hughes, Alabama; Eric G. Meredith, Montana; and John M. Richard, Missouri.

New Founder Members of ΣAE Foundation Named

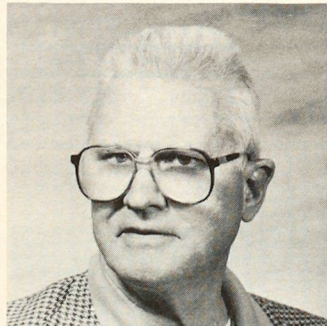
Elsewhere in this issue of *The Record* are articles about some of the many programs sponsored by the Sigma Alpha Epsilon Foundation. These programs would not be possible without the generosity of the many brothers who support the foundation.

A Founder Member has contributed, or has had contributed in his name, \$1,000 or more in total giving to the foundation. New Founder Members are featured in *The Record* as their biographies are received at the national fraternity of office.



Donald R. Beall

San Jose '60 (California Zeta); FM 1370. Brother Beall is president, chief operating officer and a director of Rockwell International Corporation. He is an honorary member in the prestigious Society of Manufacturing Engineers. In 1981, Beall was appointed by President Reagan as a member of the President's Export Council.



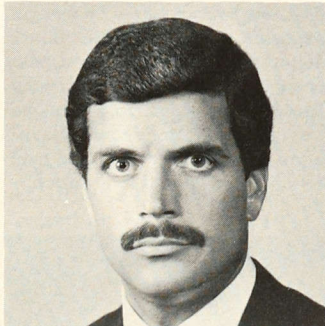
George G. McNeely

Lafayette '39 (Pennsylvania Gamma); FM 1458. McNeely has retired from his position as an engineer with Lenkurt Electric Company, which became GTE Lenkurt Incorporated. He is also a retired commander in the U.S. Naval Reserve. He and his wife, Mary, have been married for 43 years. They have two daughters and two granddaughters.



Walter L. Kuebler

Beloit '21 (Wisconsin Phi); FM 1416. Brother Kuebler is the owner of Walter L. Kuebler Advertising. He's been with this firm for 61 years. He has served as president of the Burlington School Board and of the Telephone Company. Kuebler has two daughters, five grandchildren, and two great-grandchildren.



Lee M. Kennedy

Cincinnati '72 (Ohio Epsilon); FM 1346. Brother Kennedy, formerly an ΣAE staff member, is managing director of 3M Singapore, a wholly owned subsidiary of 3M Company. In the May 26, 1986 issue of *Fortune*, Kennedy was featured under "People to Watch." His wife, Barbara, and he have a daughter and a son.



J. Donald Baxter

Michigan State '26 (Gamma); FM 1430. Baxter is president of Baxter & Baxter, Inc. and Michigan Underwriters, Inc. Both are general fire and casualty agencies. He has one daughter, four grandsons, and two great-grandchildren.



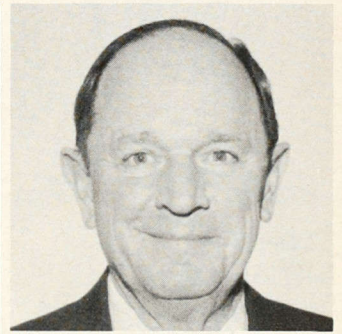
Robert A. Kelb

Toledo '31 (Ohio Nu); FM 807. Kelb has been a lawyer with Watkins, Bates, & Handwork since September of 1984. He has been quite active in his community in Toledo, where he resides with his wife, Hazel.



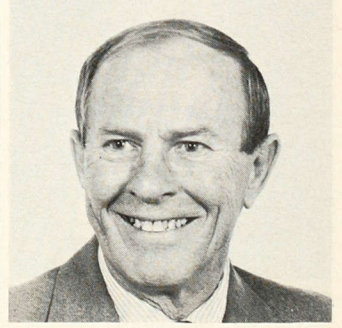
Frank G. Lucas

Oregon '40 (Beta); FM 1417. Frank is self-employed as a Real Estate and General Insurance Broker with Frank G. Lucas and Company. He has been with the firm since 1946. He lives with his wife, Angela, in Kentfield, California.



Jack V. Denton

Washington '39 (Alpha); FM 1365. Jack is a real estate broker and the owner of his firm. In World II, he served in the 3rd infantry division. Denton and his wife, Anne, have three children and nine grandchildren.



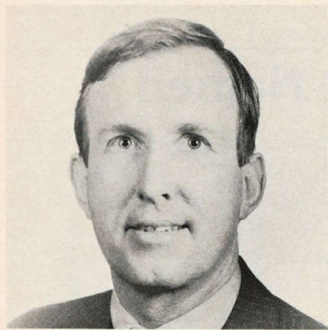
Charles B. Grant

Georgia '55 (Beta); FM 1348. Grant is the president of Tex-Trim Incorporated in Chamblee, Georgia. He has been with the firm for 24 years. His wife, Dianne, and he have a daughter and a son.



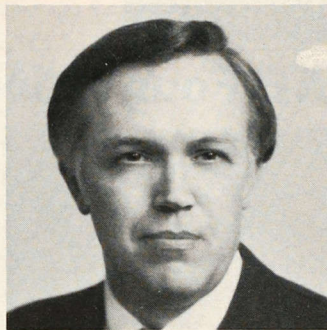
William E. Lorenz

Washington University '26 (Missouri Beta); FM 1391. William, who retired in 1920, was with Sverdrup & Parcel for 35 years, as a consulting engineer, head engineer, and project manager. Brother Lorenz, who is widowed, has two children and four grandchildren.



James A. Cummings

East Tennessee State '67 (Alpha); FM 1343. Brother Cummings is the vice president and owner of the Southern Atlantic Label Company. James served with the 101st Airborne Division in Vietnam in 1970-71, and now lives with his wife, Claudia, and their three children in Chesapeake, Virginia.



Verne E. Griffith, Jr.

Oklahoma '61 (Kappa); FM 1427. For the past year, Brother Griffith has been vice-president of Sales & Marketing for Koch Engineering Co., Inc. Residents of Wichita, Kansas, Verne and his wife, Susan, have a son and a daughter who both attend Dartmouth College.



Jonathan S. Baxt

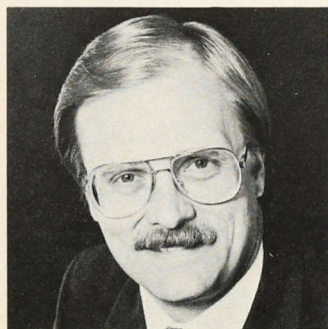
Oklahoma '77 (Kappa); FM 1321. Captain Baxt is a fighter weapons instructor for the Kansas Air National Guard at the McConnell Air Force Base in Wichita, Kansas. He has received three Air Force Commendation Medals and one Air Force Outstanding Unit Award. His wife, Amy, and he have one daughter.

Advertising and Merchandising for Syracuse China Corporation. He and his wife, Esther, have two daughters.



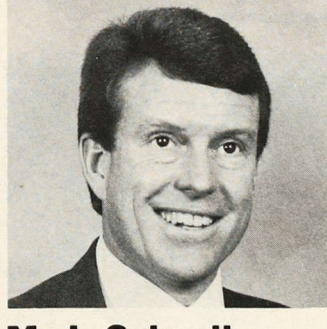
Robert N. Arrol, III

Tulane '61 (Louisiana Tau-Upsilon); FM 1352. Brother Arrol practices medicine in Arcola, Illinois. He also serves as the city's health officer, and is a clinical associate in the University of Illinois School of Basic Medical Sciences. His wife, Pris, and he have three children.



Daniel L. Alsaker

Idaho '72 (Alpha); FM 1374. Alsaker currently works in corporate administration for the Alsaker Corporation, Broadway Truck Service, Incorporated, and Otter Bay Company, Incorporated. He and his wife, Anne, have four children. They reside in Green Acres, Wisconsin.



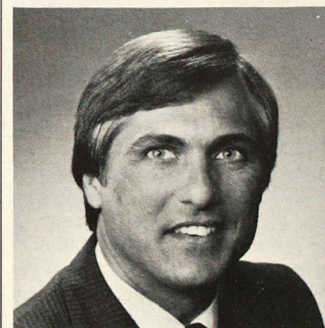
M. J. Schnell

Idaho '72 (Alpha); FM 1363. Schnell is the midwest region sales administration manager for Hewlett-Packard Company. Previously, he served in the U.S. Navy in the Western Pacific and in Athens, Georgia. He now lives in Rolling Meadows, Illinois, and has one son.



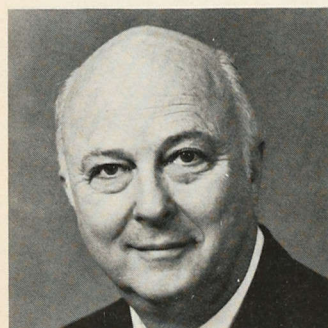
Avery O. Gage

Beloit '39 (Wisconsin Phi); FM 1390. Gage retired after 27 years as corporate secretary of J.L. Clark Manufacturing Co. He is a past president of the Rockford Area Chamber of Commerce and of the Swedish-American Medical Foundation. His wife, Jean, and he have two children and five grandchildren.



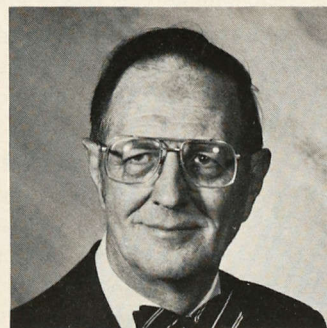
Philip L. Abraira

Florida State '70 (Beta); FM 1369. Brother Abraira is the chief financial officer for the Inmed Corporation of Atlanta, Georgia. Philip, who played football in college, was drafted by the Chicago Bears in 1970. He and his wife, Fayann Hannon, have five children.



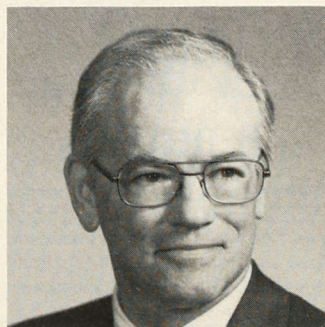
Michael A. Jordan

Pennsylvania State '54 (Alpha-Zeta); FM 1472. Jordan is the retired manager of the Quality-Productivity Office at IBM. He is the past president and founder of Figural Bottle Opener Collectors. He and his wife, Patricia, have a son and two grandchildren.



Fred H. Hamilton

Centre College '38 (Kentucky Kappa); FM 1428. Fred has retired as owner of the Hamilton Funeral Home, as well as from his position as president of Verona Bank. Hamilton and his wife, Ellena, have four children, eleven grandchildren, and one great-grandchild.



Martin B. Shellenberger

Gettysburg '48 (Pennsylvania Delta); FM 1457. Brother Shellenberger works in marketing management and is vice president of



Richard H. Crooks

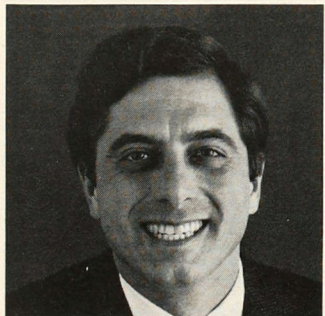
Furman '59 (South Carolina Phi); FM 1387. Richard is currently self-employed at a dermatology clinic, having earned his M.D. at the Medical University of South Carolina

and completed his dermatology residency at Baylor College of Medicine. He lives in Greenville, South Carolina.



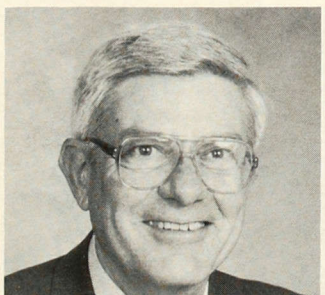
Keith D. Shaw

Washington University '55 (Missouri Beta); FM 1398. Shaw is a partner and vice president of Elleard B. Heffern, Inc., a fine jeweler and designer. He also lectures on precious gems and pearls. Keith and his wife, Cynthia, have three daughters and one grandson.



Anthony A. Rose

Tennessee '72 (Kappa); FM 1384. Brother Rose is currently the executive vice president with Mike Rose Foods. He is also involved with Junior Achievement, Cystic Fibrosis, Salvation Army, and Muscular Dystrophy. He and his wife, Rita, have two sons and one daughter.



A. Leland Burpee, Jr.

Florida '54 (Upsilon); FM 1342. Burpee, who is the president of the Florida Title Group, Inc., has been with the firm for 32 years. Brother Burpee and his wife, Lell, are active members of their community. They have three children.

Katherine C. "Mom" Woods

Special Founder Member section dedicated

The ranks of Founder Members of ΣAE are growing tremendously each year. The number of Founder Members included in this issue of *The Record* is the highest number we've ever had in one issue.

This section is in recognition of not only the new Founder Members, but to the 1,525 brothers who have also given, or have had given in their names, \$1,000 to the ΣAE Foundation.

We lead off and dedicate this quarter's Founder Members section with Katherine C. "Mom" Woods, 96, who is Founder Member number 1244. "Mom Woods" was housemother to the brothers at **Oklahoma State (Mu)** for 38 years, a record tenure for any housemother.

Mom Woods retired 26 years ago in 1961, but still visits and receives visits from the brothers at Oklahoma State. She lives just a block away.

"They know they are welcome here any time and that's the way I want it," Woods said. "My life has always been, and still is, my boys."

Mom Woods came to Stillwater in 1924 to serve temporarily as the housemother for the local fraternity, Chi Beta. That was the longest temporary visit a housemother ever spent. She was there when Chi Beta became Sigma Alpha Epsilon. She packed the brothers' meals when they set off to petition for a charter from ΣAE, which they received on February 14, 1931.

The devotion Mom Woods showed the brothers was never so apparent as during World War II. She stayed at the fraternity



Mom Woods

house and gathered correspondence from brothers overseas. She condensed them into a newsletter and mailed them to 800 brothers each month.

"I was as much a part of the war as they were," Woods said.

Soon thereafter, she was the sixth recipient of the Golden Daughter of Minerva Award, given in 1949.

Several brothers who lived with Mom Woods went on to fame and fortune. Woods was housemother to oilman T. Boone Pickens Jr., former Oklahoma State Senator Robert Murphy and the late internationally renowned architect, Bill Caull.

To commemorate her 95th birthday and her 25th year since retirement, the brothers hosted a reception at the house in her honor last November. The event

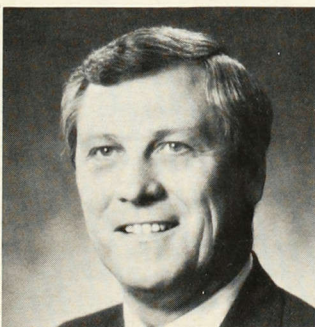
was picked up by the wire services and appeared in newspapers around the country.

The only thing missing from Mom Woods' life is copies of the newsletters she wrote during World War II. The copies were ruined when the basement of the Oklahoma Mu house was flooded several years ago. If you have a copy of one of Mom Wood's newsletters, please notify her or Oklahoma Mu Housemother Kathryn Andre.

Although she retired before most of the current undergraduate brothers at OSU were born, they still refer to her as "Mom Woods" and she still calls them "my boys."

"They were the loveliest boys," she says. "The finest young men. So kind, so good, so precious, and they still are."

So are you Mom Woods, so are you.



Richard G. LeFauve

Richard G. LeFauve

Case Institute of Technology '56 (Ohio Rho); FM 1467. LeFauve is president of Saturn Corporation and vice president of General Motors. He also serves as director of Operations for the Buick-Oldsmobile-Cadillac Group. LeFauve spent five years in the U.S. Navy and received the rank of Lieutenant Commander in the Naval Reserve.

Robert W. Raymond

Harvard '37 (Massachusetts Gamma); FM 1280. Raymond is a physician who retired in 1986 as Associate Clinical Professor of Medicine and head of the Division of Allergy in Albany, New York. He and his wife, Marion, have four children and three grandchildren.



Jack C. Tennison

Georgia Tech '42 (Phi); FM 1383. Jack is chairman of the board of Tennison Brothers, Inc. He is also a past president of the Rotary Club and has received their Paul Harris Fellow Award in West Memphis, Arkansas. He and his wife, Joyce, have one son and two grandchildren.



Charles Tupper, Jr.

Texas-El Paso '64 (Gamma); FM 1304. Charles, as executive vice president of the National Independent Automobile Dealers Association, is the chief staff officer and lead lobbyist for the industry before Congress and federal agencies. He and his wife, Sherry, have three children.

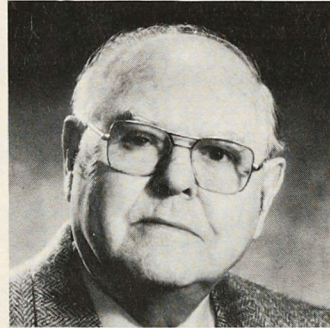


Timothy Furlong

Indiana '58 (Gamma); FM 1418. Furlong is the vice president and Branch Manager of Paine Webber in La Jolla, California. He was the president of his chapter at Indiana University, and he also served as a helicopter pilot in the U.S. Army. Furlong and his wife, Cynthia, have a son and a daughter.

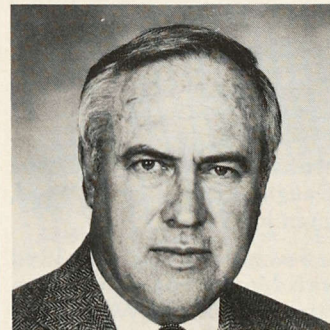
Bruce C. Feiring

Duke '47 (North Carolina Nu); FM 1386. For 12 years Feiring has been with the Franklin Mint, and now serves as general manager of the Book Division.



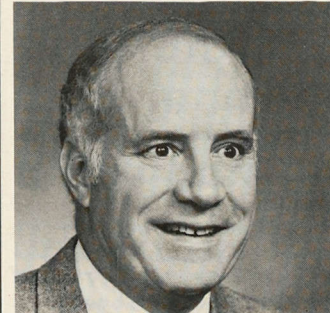
Joseph S. Marshall

South Dakota '38 (Sigma); FM 1377. Brother Marshall, a retired college professor, has taught at the University of South Dakota, Pershing College, and at Douglas College. He and his wife, Ruth, who have five children and seven grandchildren, live in White Rock, British Columbia, Canada.



William E. Seginski

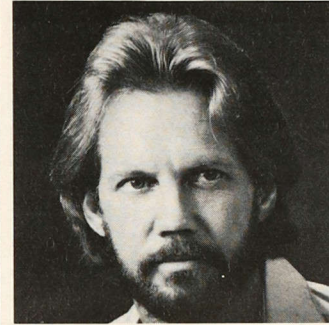
Arizona '59 (Alpha); FM 1275. Seginski, who is president of J & B Sales Co. of Phoenix, has been with the company for 24 years. He is also the president of the University of Arizona's Phoenix Alumni. William and his wife, Cora, have three children.



William E. French

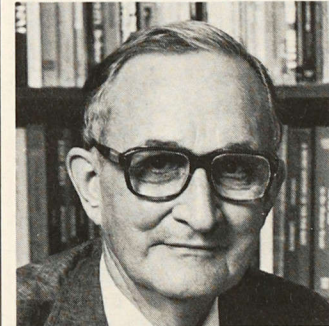
Mississippi State '59 (Theta); FM 1426. French is a partner in the Dan Bottrell Agency, Incorporated

(insurance) and serves as vice president and secretary. He was the 1984 president of Mississippi State University Alumni Association and currently serves on the Athletic Council. He has a daughter and a son.



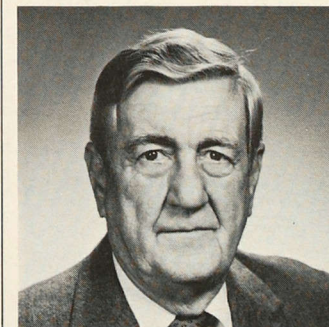
Gervis F. Galbraith

Texas El-Paso '62 (Gamma); FM 1359. Galbraith has been in solo practice of general surgery for 14 years. He is a past president of the Taylor-Jones-Haskell County Medical Society. He lives in Stamford, Texas, with his wife, Peggy.



William M. Gabard

Tennessee '47 (Kappa); FM 1419. Gabard is a Professor of History and director of the Department of International Studies at Valdosta State College, where he has taught for 39 years. He and his wife, Lougenia, who is a Delta Delta Delta, live in Valdosta, Georgia.



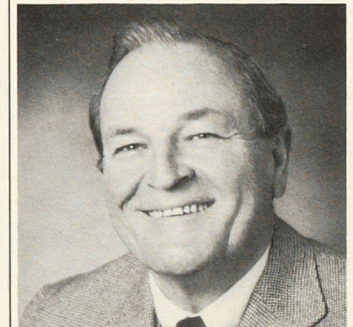
Truman L. Tormey

Iowa '42 (Beta); FM 1400. After 28 years, Tormey retired from his position as wage and salary administrator for Airesearch Manufacturing Co. He and his wife, Mary, live in Los Angeles.



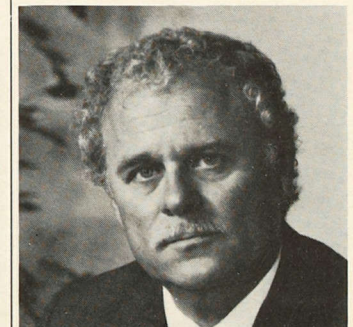
E. David Haigler, Jr.

Birmingham-Southern '62 (Alabama Iota); FM 1414. Brother Haigler is a physician at Norwood Clinic, as well as being the director of Medical Education for Carraway Methodist Hospital in Birmingham, Alabama. His wife, Armanda, and he have two sons, Ted and Richard.



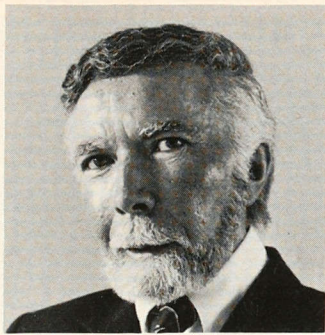
Ronald W. Worden

San Jose State '50 (California Zeta); FM 1381. Brother Worden is board chairman of A. Levy and J. Zantner Co., of Sacramento, and he has been with the firm for 20 years. He is also president of the Exeter Sportsmen's Association. Ronald and his wife of 35 years, Barbara, have a son and a daughter, and live in El Masero, CA.



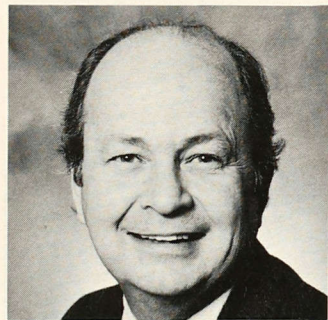
Jesse W. Lovelace

Missouri '60 (Alpha); FM 1332. Jesse is a partner of Deeb/Lovelace Companies, a firm which owns and operates many Hilton, Sheraton and Holiday Inn hotels. He and his wife, Bobbie, have three children and one grandchild.



Josiah K. Bates, Jr.

Emory '56 (Georgia Epsilon); FM 1293. Bates attended Oxford College, Mexico City College, Emory in Florida and Georgia as well as abroad. He was affiliated with a national corporation until 1963. Josiah, who is a member of the "1881" club of Georgia Epsilon, now resides in Coral Gables, FL.



Ronald MacNicholas

Cincinnati '55 (Ohio Epsilon); FM 1389. Ron is the senior vice president of Operations Services with MidCon Corporation, a subsidiary of Occidental Petroleum Corporation. Brother MacNicholas and his wife, Nancy, live in Lombard, Illinois, and have three children and four grandchildren.



Richard D. Strachan

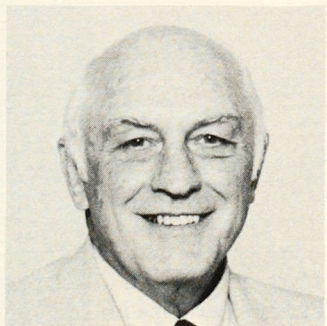
Oregon State '63 (Alpha); FM 1422. Strachan is the senior vice president of the Ryland Group and

President of Ryland Modular Homes. The company is one of the nation's largest home builders. Richard and his wife, Susan, have two sons.



Darrell S. Jones, Jr.

Duke '50 (North Carolina Nu); FM 367. Darrell has been a self-employed industrial hygiene consultant since 1985, having previously worked as an industrial hygienist for California O.S.H.A. the previous eight years. He and his wife, Rowena Beth, have two married daughters and one granddaughter.



James E. Durrett, Jr.

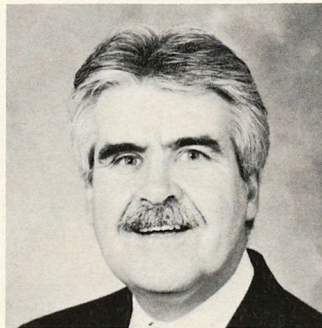
Centre College '39 (Kentucky Kappa); FM 1411. James is the vice president of Brawner Paper Company, Inc., in Houston, Texas. He has been with the firm for 17 years. He and his wife of 44 years, Helen, have four children and five grandchildren.



William R. Hagman, Jr.

William R. Hagman, Jr.

Kansas '57 (Alpha); FM 1421. Brother Hagman is the president of the Hagman Corporation. He is also on the Board of Directors of City National Bank, and is President of the National Association of Tobacco Distributors. He and his wife, Dorothy, have three children.



Thomas J. McGrath, Jr.

George Washington '65 (Washington City Rho); FM 1394. McGrath is senior vice president of Distribution and Logistics for Woodward and Lothrop, Incorporated (retailing). He has three sons, and he coaches and referees youth, high school and college soccer.

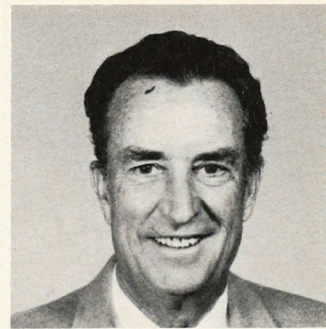


L. William McNutt, Jr.

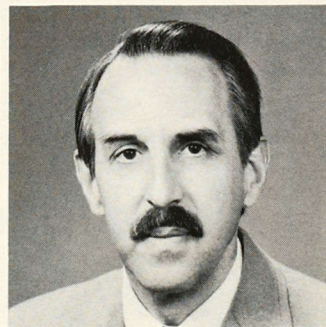
Vanderbilt '49 (Tennessee Nu); FM 1380. Brother McNutt is the President of the Collin Street Bakery of Corsicana, Texas. He was appointed in 1985 by President Reagan to be director of the Board for International Food and Agriculture Development. McNutt and wife, Josephine, have four children.

Chester H. Fliesbach

Nebraska '40 (Lambda-Pi); FM 1375. Chester has been on the



Board of Directors for Scottsbluff National Bank since 1957, and is presently chairman of the board. Brother Fliesbach enjoys flying airplanes as a hobby. He and his wife, Jane, have three daughters.



Miller B. Engelhardt

Alabama '60 (Mu); FM 1382. Miller has been an orthopedic surgeon with the firm of Doctors Everest, Parker, Engelhardt, and Smith, P.C., for 17 years. Brother Engelhardt's father and son are also ΣAEs. He and his wife, Virginia, also have a daughter.



Dennis L. Neider

Drexel '70 (Pennsylvania Epsilon); FM 1444. Denny, former Archon of Province Nu, is a CPA and an audit and accounting services partner for Price Waterhouse. His wife Agnes and he have two daughters. The family has hosted nine exchange students from around the world.



Kenneth M. Eberts, Jr.

Stanford '54 (California Alpha); FM 1330. Brother Eberts is currently vice president of finance and chief financial officer for International Multifoods Corporation. He and his wife, Marjorie, who is a syndicated columnist and author, live in Minneapolis, Minnesota. They have two children.



Ronald B. Mitchell

Tulane '47 (Louisiana Tau-Upsilon); FM 1337. Mitchell is a physician and president of Obstetrical and Gynecological Associates of Akron, Inc. He is also an assistant clinical professor at the Northeastern Ohio College of Medicine. His wife, Patricia, and he have four children and five grandchildren.



Richard T. Horsfall

Pennsylvania State '36 (Alpha-Zeta); FM 1401. Horsfall is the vice president of W. W. Clark Corporation in Electrical Contracting. He has been with the firm for 42 years. He and his wife, Ursula, have been married for 49 years, and they have five children and eleven grandchildren.



Lewis W. Dunton, Jr.

Harvard '34 (Massachusetts Gamma); FM 1456. Dunton is the retired vice president of A. C. Lawrence Leather Company, and he is a retired Rear Admiral in the U.S. Naval Reserve. He and his wife, Mary, have been married for 51 years, and have had three sons and four grandchildren.

Boone's book is frank, open business story

Review by Robert A. Christensen, Vanderbilt '55 (Tennessee Nu)

Boone

by T. Boone Pickens, Jr.
Houghton Mifflin Co. \$18.95.

If you have an instinctive liking for Texans and oil men, as I do, you should enjoy *Boone*. This book has been on the *New York Times* best seller list for non-fiction for several months now, so obviously others are enjoying it. In my opinion the book succeeds very well as an interesting business story. Along the way we learn something of Mr. Pickens' business philosophy which could have application to our own lives.

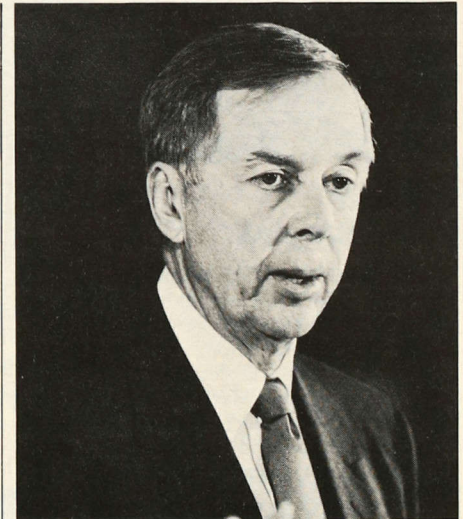
The book is not a primer on the oil industry. Alas, we are as ignorant as before about the oilman's lingo, or about what takes place between exploration and pipeline hookup. Nor is this a book on how the average person may become rich or powerful. Mr. Pickens is very frank and open. It is readily clear that he took great financial risks along the way. Much greater risks than the proverbial prudent man would take.

Pickens' boyhood, high school and college years are covered in the first 25 pages. In a picture section we are told he was an Σ AE at Oklahoma State. Since he married while he was still in college, it seems doubtful that he had a full fraternity life. At age 26 he gave up his

geologist's role at Phillips Petroleum to go out on his own.

By steps we follow the growth of his own company, which later evolved into Mesa Petroleum. As Mesa in turn continued to grow, Mr. Pickens developed his ideas of generating value for his shareholders. He found that he could acquire oil and gas reserves more cheaply and with greater certainty by buying other companies with proven reserves than by exploring for oil himself.

This discovery led him into fights to acquire, in turn, Cities Service, Phillips Petroleum, and Gulf Oil. We learn in some detail how these battles were fought. We also learn that Mr. Pickens had a rather low opinion of the managements of these companies, and of the investment bankers and lawyers defending them. I was a little troubled by this. I found it difficult to believe that the chief executives of all these large, successful companies could have no redeeming management skills. I also noted that Mr. Pickens did not hesitate to employ investment bankers and lawyers to further his own positions.



Mr. Pickens concludes by devoting a couple of not-to-be-missed chapters to money and leadership. As he does throughout the book, he tells us just how he sees it. He is direct and to the point. Given his successful career, his thoughts on communication, management style, ethics, etc., are worth careful consideration. Read *Boone*. You'll enjoy it.

Bob Christensen, chairman of the Advisory Council of the Sigma Alpha Epsilon Foundation, is an investment counselor with Stein Roe & Farnham in Chicago.



THE 1987 NATIONAL OFFICE STAFF

Top Row, l to r: Tom Hume, Zan Hefner, Steve Cady, Todd Mullins, Fritz Kruger, Jay DeWitt. Second Row, l to r: Tom McCarthy, Scott Haggard, Brad Cohen, Ken Tracey, Jeff Arnold, Dave Arendt, Mike Sophir. Third Row, l to r: Glynis James, Karen Corrado, Ida Horn, Irene Dedeaux, Evelyn Stuckle, Roberta Nelson, Jacqueline Haynes. Bottom Row, l to r: Elaine Schubert, Marolyn Taylor, Rose Kenna, Frances Gillan, Evelyn Smith, Carolyn Zhiss.

Corporate matching can double your Foundation gifts

Corporate matching programs can greatly enhance the Σ AE Foundation's fundraising efforts. For several years, entities such as **Beatrice Foods**, **PepsiCo Foundation**, **Levi Strauss & Co.** and **Xerox Foundation** have included fraternity foundations as eligible for matching gifts. Brothers who wish to make annual contributions to the foundation may be able to double the size of their gifts if their employers match gifts. Corporate matching gifts

are applied to the brother's personal giving record.

An abbreviated list of corporations is being published in *The Record* to motivate brothers to inquire if their employers have matching gift programs which will augment their gifts to the Sigma Alpha Epsilon Foundation. Check with your personnel or human resources director to determine if your employer has such a program and what the re-

quirements are for matching gifts to educational programs.

Ashland Chemical
Dow Corning
Johnson & Johnson
Kimberly-Clark Foundation
Mobil Foundation, Inc.
Nabisco Brands, Inc.
Quaker Oats Foundation
Scott Paper Co.
Transamerica Corporation

Porter P. Underwood

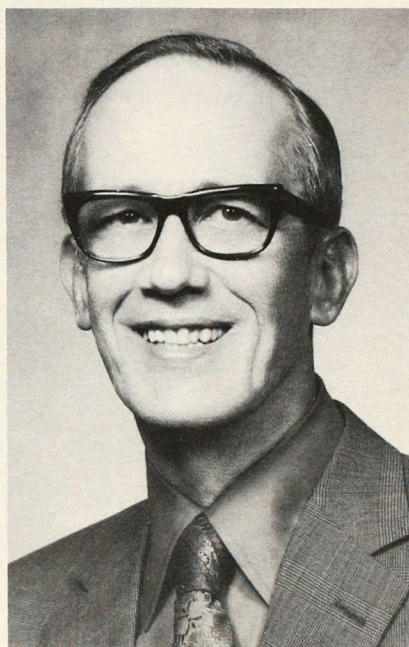
Porter Underwood (*Oregon Beta '38*), called **Mr. ΣAE in the Great Northwest** and beloved to all who crossed his path, served his chapter in every office as an undergrad. As a member of the Portland Alumni Association he held every office including President. He served two terms as archon of Province Lambda, and in 1983 at the Minneapolis Convention was awarded the Distinguished Service Medal. Along with his wife, Betty, he attended every Convention since 1973.

While Province Archon, he helped in rebuilding the Oregon Delta Chapter at Lewis & Clarke, which had fallen on rough times.

Porter was one of the driving forces responsible for the 131st Convention being held in Portland and was responsible for its success. Although he passed into Chapter Eternal hours before the Convention officially opened, we felt his presence because his hand was in evidence in the warm hospitality we all enjoyed.

ΣAE was Porter's family; his home was always open to us.

It was most fitting that we honored Porter



Underwood at the 131st Anniversary Convention in his cherished City of Portland by electing him the Honorary Eminent Su-

preme Archon for the next biennium and by dedicating this Convention to his memory. Porter Underwood (1915-1987).

Newspaper magnate Edward Scripps

Edward Willis "Ted" Scripps II, a trustee of the Scripps Howard news organization founded by his grandfather, died on a flight from Hawaii to Australia in June.

Brother Scripps, 73, was on a fact finding visit around the Pacific when he died. He was the youngest of three brothers who serve as trustees of the E. W. Scripps Trust, created by E. W. Scripps to hold ownership of the privately held Scripps Howard enterprises.

College Football Hall of Fame's Ike Armstrong

Ike Armstrong, **Drake '23** (*Iowa Delta*), died of pneumonia in Corona Del Mar, California. Brother Armstrong was a former football player and assistant coach at Drake, coach and athletic director at Utah and athletic director at the University of Minnesota for 13 years until 1963. For the following four years he was the Big Ten's director of football officials. He was elected into the National Football Foundation Collegiate Hall of Fame in 1957.

Thatcher Johnson, Iowa state official

Thatcher Johnson, **Iowa '51** (*Beta*), died of cancer in June at his home in Madrid, Iowa. Brother Johnson, 58, was a deputy state agriculture secretary for 14 years, and a candidate for agriculture secretary last fall.

Albert Carlson: Forester, scout leader

Albert Darrell Carlson, **Oregon State '55** (*Alpha*), died in April of lymphoma in Corvallis, Oregon. Carlson was a timber operations manager for Willamette Industries and a professional land surveyor. He had been a scout leader since 1940.

Until his death, Brother Carlson was the Oregon Alpha financial advisor and treasurer of the house corporation. He was presented with the Order of the Lion in June, 1986, and was recently recognized for his work by the OSU Office of Student Services.

Carlson's twin sons, both ΣAEs, are undergraduates at Oregon State. Hans is the current Eminent Archon and Nels is the treasurer.

Attorney Jack M. Pace

Jack M. Pace, **Nebraska '36** (*Lambda-Pi*), died July 11 in Lincoln, where he was the city's first full-time city attorney. After graduating from Harvard Law School, Pace became a member of former presidential candidate Thomas Dewey's district attorney's staff in New York City in 1939.

Brother Pace served in the U.S. Army during World War II. He attained the rank of major, and was awarded a Bronze Star for valor. He was one of the prosecutors at the war crimes trial of Japanese Gen. Yamashita.

Drake, Iowa State housemother dies

Hazel Penquite Bergman died June 23, 1987. Mrs. Bergman was a special woman to undergraduates at Iowa Delta (**Drake**), and later Iowa Gamma (**Iowa State**), where she served as a housemother.

At the VEISHIA celebration at Iowa State in 1956, Mrs. Bergman was named the 39th recipient of the Golden Daughter of Minerva Award.



IN MEMORIAM

Contributions "in honor of" or "in memory of" a late brother may be sent to Kenneth D. Tracey, executive director, Sigma Alpha Epsilon Foundation, P.O. Box 1856, Evanston, IL 60204.

Recent gifts of the ΣAE Foundation have been received in memory of:

Paul K. Ashby

by Arthur R. Ashby

William E. Ashby

by Arthur R. Ashby

Roland T. Beard

by Mrs. Roland T. Beard

Gunnar E. Erickson

by Donald H. Parker

John C. Hancock

by H. Grady Sellards

Thomas W. Harris

by Mrs. LaRetta Harris

James R. Haygood III

by John Allen Jones III

Clifford R. Horn

by Robert A. McClevey

Halbert W. Keck

by Lorraine K. White

Michael T. McCann

by Will Hill Newton III

Mark E. Osterhoff

by Daniel Mariani

John R. Perry

by the Toledo Area Alumni Association

William O. Richtmann

by William M. Richtmann

David L. Shaffer

by the Toledo Area Alumni Association

Edward W. (Ted) Scripps II

by William E. Buck
Robert L. DeRuff
John S. Gianotti
William D. Jager
Lionel G. Leonard

Walter E. MacKenzie
Leo M. O'Brien, Jr.
Franklin C. Schadrack

Samuel O. Smith

by J. Philip Boyle, Jr.

Porter P. Underwood

by Connie A. Chiotti
Shelby B. Douglas
John M. Gates
Harry N. Hanson
Paul E. Keeney
Morris K. Noren
Kurt H. Olsen
the Portland Area Alumni Association
Dayton Sharpe, Jr.
Donald W. Stevenson
Tracey Stoll
Charles Witzleben

Frederick K. Whiteside

by Verne G. Wylie

Paul R. Wylie

by Max Worthington

Arthur L. Zachry, Jr.

by Mrs. Arthur L. Zachry, Jr.

We're loaning money to deserving brothers.

The ΣAE Foundation can loan up to \$4,000 to deserving ΣAE juniors, seniors or graduate students who apply for the student loan program. Eligible applicants may borrow up to \$2,000 during an academic year. For more information, contact Roberta Nelson, student loan administrator at the Sigma Alpha Epsilon Foundation office, P.O. Box 1856, Evanston, IL 60204.

**Spring loan applications must be submitted before
February 15, 1988.**

**Province Eta
invites all brothers
to attend**

**THE SECOND ANNUAL SKIFEST
in Park City, Utah
February 5, 6 & 7, 1988**

**— Details will be mailed to all chapters —
Questions? Contact Dr. Terry Berner,
(801) 583-8068**



ΣAE LOGO
YOUR CHAPTER
YOUR NAME
← HERE

CUSTOMIZED WATCHES

**Send us your name
and chapter
along with \$49.50 and we'll
rush you a customized
ΣAE quartz watch.**

Your fraternity logo in color is the dial of an attractive wristwatch. Gold plated, thin case design, leather band, and battery powered quartz movement. 1 year limited warranty. Men's and women's sizes available. 3-4 week delivery.

**GREGORY'S WORLD
(MANUFACTURERS)
2269 Chestnut St., Suite 322
San Francisco, CA 94123
415-931-7283**

(Money back guarantee)

Chapter Listings

This list is published in each issue of The Record to identify brothers who have joined the ΣAE Chapter Eternal. The list includes the names of all brothers for whom obituaries have been received at the national fraternity office as of July 15, 1987, since the last issue was published. If a chapter is not listed, it is because no death notices have been received on members of that chapter. Obituaries and death notices about ΣAE brothers should be sent, bearing the name, address and telephone number of the sender, to the national fraternity office.

ALABAMA IOTA (Birmingham-Southern)

James B. Fort, '23, of Huntsville, Alabama, on January 4, 1987.

ARIZONA ALPHA (Arizona)

Steve E. Feffer, '79, of Maricopa, Arizona, on March 14, 1987.

CALIFORNIA BETA (Berkeley)

Robert O. Conn, '45, of Penn Valley, California, on June 21, 1987.

CALIFORNIA GAMMA (Southern California)

Milas L. Hurley, '24, of Albuquerque, New Mexico, on February 1, 1987.

CALIFORNIA DELTA (Los Angeles)

Richard Browne, '29, of Lake San Marcos, California, on December 16, 1986.

CALIFORNIA EPSILON (Los Angeles)

Glenn Davies, '27, of San Luis Obispo, California, on March 21, 1987.

CALIFORNIA ZETA (Cal State-San Jose)

William E. Bauleke, '57, of Walnut Creek, California, on March 30, 1987.

CALIFORNIA ETA (Santa Barbara)

Timothy R. O'Hickey, '86, of Sand Lake, New York, on May 14, 1987.

COLORADO DELTA (Colorado State)

William D. Rice, '36, of Greeley, Colorado, on December 2, 1986.

COLORADO ZETA (Denver)

Robert S. Savery, '31, of Whittier, California, on March 8, 1986.

COLORADO LAMBDA (School of Mines)

Curtis K. Bentley, '48, of Mesa, Arizona, on May 22, 1987.

COLORADO CHI (Colorado)

Hugh B. McGinn, '48, of Wheeling, Illinois, on November 6, 1986.

FLORIDA ALPHA (Miami)

Capt. William L. Cleveland, '56, of Jensen Beach, Florida, on April 22, 1987.

FLORIDA BETA (Miami)

William L. Tucker, '49, of Naples, Florida, on March 23, 1987.

GEORGIA BETA (Georgia)

Karl W. Bohren, '24, of Clairton, Pennsylvania, on March 11, 1987.

Charles T. McCrimmon, '34, of Miami, Florida, on April 8, 1987.

Augustus H. Sterne, '35, of Atlanta, Georgia, on October 13, 1986.

GEORGIA EPSILON (Emory)

Luther M. Heard, Jr., '28, of Leland, Mississippi, in July, 1986.

GEORGIA PHI (Georgia Tech)

Oscar G. Davis, '22, of Atlanta, Georgia, on April 23, 1987.

GEORGIA PSI (Mercer)

William M. Hill, Jr., '23, of Pensacola, Florida, on March 19, 1987.

ILLINOIS DELTA (Millikin)

John C. Griswold, '23, of New York, New York, on March 24, 1987.

INDIANA ALPHA (Franklin)

Maurice V. Johnson, '14, of Greenwood, Indiana, on May 20, 1987.

INDIANA BETA (Purdue)

John C. Smalley, '40, of West Lafayette, Indiana, on June 11, 1987.

IOWA BETA (Iowa)

Thatcher Johnson, '51, of Madrid, Iowa, on June 30, 1987.

IOWA DELTA (Drake)

Evert R. McGrath, '22, of Eagle Grove, Iowa, on August 15, 1986.

KANSAS ALPHA (Kansas)

Howard E. Ryerson, '45, of Jefferson, Iowa, on April 14, 1987.

KANSAS BETA (Kansas State)

Roland T. Beard, '28, of Dunedin, Florida, on October 1, 1986.

KANSAS GAMMA (Kansas State)

Richard M. Hartigan, '23, of Fort Wayne, Indiana, on March 4, 1987.

KANSAS DELTA (Kansas State)

Wills R. Wenrich, '38, of Cimarron, Kansas, on August 18, 1986.

KENTUCKY EPSILON (Kentucky)

John C. Hancock, '47, of Huntsville, Alabama, on April 8, 1987.

KENTUCKY DELTA (Kentucky)

Donald Van Deren Irvine, '39, of Paris, France, on May 30, 1987.

LOUISIANA TAU-UPSILON (Tulane)

Joseph D. Patton, '28, of Kerrville, Texas, on February 17, 1986.

MASSACHUSETTS DELTA (Worcester Tech)

Robert E. Russell, '46, of Worthington, Ohio, on September 19, 1986.

MICHIGAN GAMMA (Michigan State)

J. Donald Baxter, '26, of Grosse Pointe, Michigan, on June 14, 1987.

MICHIGAN DELTA (Michigan State)

Lisle L. Watterson, '36, of Grand Rapids, Michigan, on June 14, 1987.

MICHIGAN THETA (Western Michigan)

Jonathan L. DeVinny, '71, of Bedford, Texas, in September, 1986.

MINNESOTA ALPHA (Minnesota)

John A. Hitts, '85, of Shorewood, Minnesota, on May 25, 1987.

MISSISSIPPI GAMMA (Mississippi)

John W. Hannaford, '82, of Elyria, Ohio, on February 9, 1987.

MISSISSIPPI DELTA (Mississippi)

Charles H. Murphey, '16, of Itta Bena, Mississippi, on May 23, 1987.

MISSISSIPPI THETA (Mississippi State)

James O. Prude, III, '43, of Amory, Mississippi, on March 28, 1987.

Olin C. Taylor, '39, of Cleveland, Mississippi, on May 17, 1987.

Dr. Ronald W. Waschka, '55, of Colleyville, Texas, on February 6, 1987.

MISSISSIPPI THETA (Mississippi State)

Robert N. Alden, '33, of Medina, Texas, on November 9, 1986.

MONTANA ALPHA (Montana State)

Samuel W. Gaston, '72, of New York, New York, on March 2, 1987.

MONTANA BETA (Washington)

Harold W. Meeks, '31, of Signal Mountain, Tennessee, on July 17, 1986.

MISSOURI BETA (Washington)

Samuel E. Foote, '18, of Cincinnati, Ohio, on April 8, 1987.

MONTANA ALPHA (Montana State)

William E. Anderson, '41, of Texarkana, Texas, on May 29, 1987.

MONTANA BETA (Washington)

Edwin Mowery, '29, of Seattle, Washington, on April 6, 1987.

NEBRASKA ALPHA (Nebraska)

Paul R. Wylie, '23, of Bozeman, Montana, on March 31, 1987.

NEBRASKA BETA (Nebraska)

Wade H. Ellis, '32, of Alliance, Nebraska, on August 6, 1986.

NEBRASKA GAMMA (Nebraska)

Glenn W. Hopkins, '20, of Cedar Rapids, Iowa, on January 27, 1987.

NEBRASKA DELTA (Nebraska)

Jack M. Pace, '36, of Lincoln, Nebraska, on July 11, 1987.

NEBRASKA EPSILON (Nebraska)

John F. Upson, '38, of Los Angeles, California, on May 1, 1987.

NEBRASKA THETA (Nebraska)

NEW HAMPSHIRE BETA (New Hampshire)

Jack J. Hunter, '36, of Elko, Nevada, on August 17, 1986.

NEBRASKA GAMMA (Nebraska)

Edward W. Scrips, '51, of Honolulu, Hawaii, on June 15, 1987.

NEBRASKA DELTA (Nebraska)

NEW HAMPSHIRE BETA (New Hampshire)

Glenn A. Garfield, '87, of Nashua, New Hampshire, on March 21, 1987.

NEW HAMPSHIRE DELTA (New Hampshire)

NEW YORK DELTA (Syracuse)

Carl B. Burkard, '26, of Syracuse, New York, on February 1, 1987.

NEW YORK MU (Columbia)

George G. Day, '19, of Matawan, New Jersey, on January 2, 1987.

NEW YORK DELTA (Syracuse)

Halbert W. Keck, '22, of Reno, Nevada, on June 20, 1987.

NORTH CAROLINA NU (Duke)

William D. Welton, '41, of Dayton, Ohio, on March 20, 1986.

NORTH CAROLINA XI (North Carolina)

William P. Michie, '28, of Durham, North Carolina, on February 20, 1986.

NORTH CAROLINA XII (North Carolina)

Iver B. Iverson, '38, of Boise, Idaho, on April 29, 1987.

NORTH CAROLINA XIII (North Carolina)

Lloyd W. Olson, '39, of Rockford, Illinois, on April 23, 1987.

OHIO DELTA (Ohio Wesleyan)

Maynard R. Owen, '29, of Westerville, Ohio, on July 11, 1987.

OHIO THETA (Ohio State)

George T. Mann, '33, of Columbus, Ohio, on May 16, 1987.

OHIO RHO (Case Western Reserve)

Cmndr. William E. Jeremiah, '41, of Dunedin, Florida, on May 31, 1987.

OHIO SIGMA (Mount Union)

William J. Doyle, '33, of Ormond Beach, Florida, on May 5, 1987.

OHIO TAU (Miami)

John L. Wilson, '54, of Arlington, Virginia, on April 10, 1987.

OKLAHOMA KAPPA (Oklahoma)

L. Ward Brashares, '26, of Cincinnati, Ohio, on April 13, 1987.

OKLAHOMA LAMBDA (Oklahoma)

James C. Roe, '31, of Dallas, Texas, on July 14, 1987.

OKLAHOMA MU (Oklahoma)

Samuel O. Smith, '44, of Oklahoma City, Oklahoma, on March 26, 1987.

OKLAHOMA NU (Oklahoma)

OHIO DELTA (Ohio Wesleyan)

Maynard R. Owen, '29, of Westerville, Ohio, on July 11, 1987.

OHIO THETA (Ohio State)

George T. Mann, '33, of Columbus, Ohio, on May 16, 1987.

OHIO RHO (Case Western Reserve)

Cmndr. William E. Jeremiah, '41, of Dunedin, Florida, on May 31, 1987.

OHIO SIGMA (Mount Union)

William J. Doyle, '33, of Ormond Beach, Florida, on May 5, 1987.

OHIO TAU (Miami)

John L. Wilson, '54, of Arlington, Virginia, on April 10, 1987.

OKLAHOMA KAPPA (Oklahoma)

L. Ward Brashares, '26, of Cincinnati, Ohio, on April 13, 1987.

OKLAHOMA LAMBDA (Oklahoma)

James C. Roe, '31, of Dallas, Texas, on July 14, 1987.

OKLAHOMA MU (Oklahoma)

Samuel O. Smith, '44, of Oklahoma City, Oklahoma, on March 26, 1987.

OKLAHOMA NU (Oklahoma)

OHIO DELTA (Ohio Wesleyan)

Maynard R. Owen, '29, of Westerville, Ohio, on July 11, 1987.

OHIO THETA (Ohio State)

George T. Mann, '33, of Columbus, Ohio, on May 16, 1987.

OHIO RHO (Case Western Reserve)

Cmndr. William E. Jeremiah, '41, of Dunedin, Florida, on May 31, 1987.

OHIO SIGMA (Mount Union)

William J. Doyle, '33, of Ormond Beach, Florida, on May 5, 1987.

OHIO TAU (Miami)

John L. Wilson, '54, of Arlington, Virginia, on April 10, 1987.

OKLAHOMA KAPPA (Oklahoma)

L. Ward Brashares, '26, of Cincinnati, Ohio, on April 13, 1987.

OKLAHOMA LAMBDA (Oklahoma)

James C. Roe, '31, of Dallas, Texas, on July 14, 1987.

OHIO DELTA (Ohio Wesleyan)

Maynard R. Owen, '29, of Westerville, Ohio, on July 11, 1987.

OHIO THETA (Ohio State)

George T. Mann, '33, of Columbus, Ohio, on May 16, 1987.

OHIO RHO (Case Western Reserve)

Cmndr. William E. Jeremiah, '41, of Dunedin, Florida, on May 31, 1987.

OHIO SIGMA (Mount Union)

William J. Doyle, '33, of Ormond Beach, Florida, on May 5, 1987.

OHIO TAU (Miami)

John L. Wilson, '54, of Arlington, Virginia, on April 10, 1987.

OKLAHOMA KAPPA (Oklahoma)

L. Ward Brashares, '26, of Cincinnati, Ohio, on April 13, 1987.

OKLAHOMA LAMBDA (Oklahoma)

James C. Roe, '31, of Dallas, Texas, on July 14, 1987.

OKLAHOMA MU (Oklahoma)

Samuel O. Smith, '44, of Oklahoma City, Oklahoma, on March 26, 1987.

OKLAHOMA NU (Oklahoma)

OHIO DELTA (Ohio Wesleyan)

Maynard R. Owen, '29, of Westerville, Ohio, on July 11, 1987.

OHIO THETA (Ohio State)

George T. Mann, '33, of Columbus, Ohio, on May 16, 1987.

OHIO RHO (Case Western Reserve)

Cmndr. William E. Jeremiah, '41, of Dunedin, Florida, on May 31, 1987.

OHIO SIGMA (Mount Union)

William J. Doyle, '33, of Ormond Beach, Florida, on May 5, 1987.

OHIO TAU (Miami)

John L. Wilson, '54, of Arlington, Virginia, on April 10, 1987.

OKLAHOMA KAPPA (Oklahoma)

L. Ward Brashares, '26, of Cincinnati, Ohio, on April 13, 1987.

OKLAHOMA LAMBDA (Oklahoma)

James C. Roe, '31, of Dallas, Texas, on July 14, 1987.

OKLAHOMA MU (Oklahoma)

Samuel O. Smith, '44, of Oklahoma City, Oklahoma, on March 26, 1987.

OKLAHOMA NU (Oklahoma)

OHIO DELTA (Ohio Wesleyan)

Maynard R. Owen, '29, of Westerville, Ohio, on July 11, 1987.

OHIO THETA (Ohio State)

George T. Mann, '33, of Columbus, Ohio, on May 16, 1987.

OHIO RHO (Case Western Reserve)

Cmndr. William E. Jeremiah, '41, of Dunedin, Florida, on May 31, 1987.

OHIO SIGMA (Mount Union)

William J. Doyle, '33, of Ormond Beach, Florida, on May 5, 1987.

OHIO TAU (Miami)

John L. Wilson, '54, of Arlington, Virginia, on April 10, 1987.

OKLAHOMA KAPPA (Oklahoma)

Texas Beta returns to TCU

Alumni efforts lead to rechartering

By Doug Gott

When a charter is suspended, it is done with the hopes that in the future a revamped and revitalized chapter will emerge. That appears to be the case for the Texas Beta Chapter at Texas Christian University, which was closed in 1982 and re-installed in May, 1987.

Crippled by hazing incidents, Texas Beta was forced to close its house in 1982. After three years of dormancy, a group of alumni spearheaded a drive that pulled Texas Beta back together and restored the chapter that was founded at TCU in 1955.

All the efforts by the dedicated alumni of the Dallas-Ft. Worth area, together with the enthusiasm of a group of men wanting to start a strong tradition, culminated on May 2 when Eminent Supreme Warden William Chapman and Extension Director Brad Cohen handed the charter back to the active group.

"It was a great weekend," Cohen said. "We had an all-day retreat to set goals for the chapter that would constantly challenge them to do their best. And the installation banquet that evening was really impressive. Those guys sure made a lot of progress. I told them that the installation marked not the end but rather the beginning of many challenges ahead."

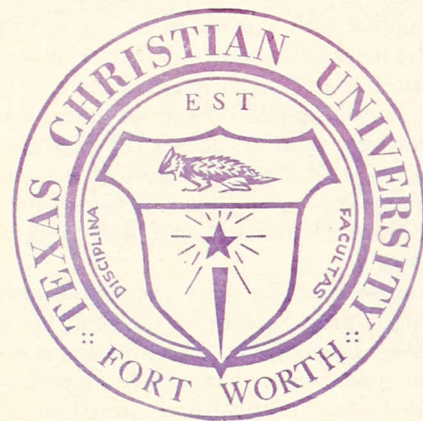
A chapter is usually placed on an alumni commission for two years. Texas Beta was given their charter after only a year on the alumni commission. The reason: "They are now one of the finer examples of what a chapter should be like in the country," Cohen said.

Texas Beta was an unusual situation from the beginning, largely because the group was colonized in the fall of 1985, just three years after being closed. Alumnus Mark Hill, a Ft. Worth attorney, headed a group of alumni that were granted permission from Σ AE and TCU to conduct a fall rush. TCU officials granted permission to the TCU alumni, with the exception of those who had been involved with the chapter when it was closed.

The first problem — money — was solved quickly. The alumni raised \$40,000 in just weeks before rush. They

used \$37,000 to rebuild the chapter room in their previous dormitory space that was destroyed by independents who had moved into their dorm after the chapter was closed. The remaining \$3,000 was used for rush.

"The most moving part of this whole thing has been the alumni," Hill said. "More than 90 different alumni participated in rush. They ranged from being out of school three years to being out 30 years. We had a great time together."



Under the leadership of former Extension Director Grant Gier; alumni John Pinkerton; president of the Dallas-Ft. Worth Alumni Association, Rick Schwab; Richard Dale; Jerry Goodman; Terry Dunlap and others were among the alumni instrumental in landing 32 men to pledge that fall. Among them was the first Eminent Archon, Jack Larson, a senior pledge and president of the TCU student body.

"I saw the need for a really good chapter on campus," Larson said. "I was impressed with the national reputation of Σ AE, and knew they would bring something positive to TCU. I wanted to be a part of that."

Larson, now a law school student at the University of Virginia, said the alumni rush was "extremely exciting and the alumni were dedicated and enthusiastic throughout."

Hill said the alumni had no set goals for the number they wanted to pledge. "We were building a group, and we wanted nothing but brother heroes," Hill said. "When we started we said we wouldn't be satisfied with being less than No. 1. We didn't care if we could only find three or four guys. We wanted quality men. Take Jack Larson for example. He gave us very strong leadership, and did a phenomenal job."

Hill was so impressed with the pledges that he petitioned the Supreme Council in the spring of 1986 to grant the TCU colony an alumni commission, whereby the charter is returned to the hands of the alumni and the pledges are able to be initiated. They were granted the commission on May 11, 1986, and Hill, Schwab, Dale, Chapman and Gier were appointed commission members.

The first chapter president under the alumni commission was Bill Kennedy. Kennedy was a member of the first pledge class, and was his own pledge class's pledge educator. He had help from Hill, who attended each meeting of the chapter for more than a year, and Gier, who structured the pledge program.

A member of the second pledge class that spring was Chris Neuberger, who was the chapter president last semester and will continue through the fall. He said he was as impressed with the job the fall pledges did in rush as the fall pledges were with the alumni efforts.

"I went Σ AE because I'm from Oklahoma City, and Σ AE is strong at Oklahoma and Oklahoma State," Neuberger said. "The guys here were sharp and impressive. Together, we've jumped right into the mainstream."

"Our old problems are solved now, we're looking to build a strong future."

Neuberger also realizes the large contribution of the alumni. "They are the main reason we're on campus," he said. "They fully supported everything we did. In the beginning, each officer had an alumni advisor, which was great."

Texas Beta has approximately 30



20 miles from home and a new charter

actives and 25 pledges, the majority being sophomores. Therefore, the chapter is growing and will soon be similar in size to the other eight fraternities on campus. Neuberger thinks a successful rush this fall will have them equal in terms of numbers.

The goals that Hill, Larson, and others instituted in the beginning seem to be becoming traditions at Texas Beta.

"We came back fast because the chapter was strong before," Larson said. "At first, we really wanted to make sure the administration respected us. That's why we placed the importance on academics."

During the spring of 1986, the original pledges successfully rushed their resident assistant in the dorm, Brian Brookins. Brookins became the chap-

ter's Resident Educational Advisor, and is a major reason why the chapter has been either first or second in grades on campus with a grade point average in the neighborhood of 2.8. Brookins was also initiated as an honor initiate.

Larson said the other goals during the first year were to "get all the organizational stuff down. We wanted to start traditions with officers, retreats, performance standards, and that kind of thing."

Two brothers were successful with major projects for the chapter. Greg Wessling published an alumni newsletter sent to more than 2,000 alumni in the Dallas-Ft. Worth area. Steve Gauntt wrote a scholarship manual for the chapter. The chapter responded by offering many academic incentives to the

brothers, one being paid tuition to the ΣAE Leadership School for the pledge with the highest grade point average.

"As you can see, the hard part is over," Hill said. "They've established themselves as the prominent chapter on campus."

However, Larson and others caution the brothers about complacency. Larson said the hazing problem that struck Texas Beta five years ago is unlikely to occur again.

"We talked about liabilities and constantly reminded them that hazing would cause us to lose our charter again," he said. "I still continue to remind them not to be relaxed. We worked very hard to prove ourselves to everybody, and I don't want to see us lose what we've gained."

Larson and the undergraduates of the past two years will remember the alumni involvement for some time.

"Mark Hill's enthusiasm for ΣAE has been great," Larson said. "What we noticed in him was that he still had the enthusiasm and love for the organization, and that goes for all the alums involved."

Hill said he got more than he bargained for in working with the chapter, but it was all worthwhile.

"I didn't realize how involved I would become when I started," he said. "But ΣAE meant a lot to me. It was a chance to give something back."

Because Hill and other alumni gave something back to ΣAE, ΣAE gave something back to Texas Beta — its charter.

Cohen (third from left) leads retreat while discussing goals for upcoming years



The excellence continues as Wisconsin Phi returns to Beloit

By M. David Wakeley, Wisconsin Phi '87

IN THE MIDST OF THE TURBULENT 1970s, Wisconsin Phi at Beloit College became yet another statistic as fraternity life across the United States declined.

While 1973 marked the end of Wisconsin Phi, 1983 marked the rebirth of the once-proud chapter that won the John O. Moseley Award for Fraternity Zeal award in 1960. That spring a group of seven freshmen and three sophomores, unsatisfied with fraternal life at Beloit College, took the bold step of forming their own fraternity, and contacted Sigma Alpha Epsilon National Fraternity. On April 15, 1984, under the effective guidance of Eminent Archon Craig Thomas, the group was officially colonized at Beloit College.

Beloit College is located in Beloit, Wisconsin, a small industrial city of 35,000 situated near the Wisconsin/Illinois border, an hour and a half drive from ΣAE National Headquarters in Evanston. The school was founded in the Wisconsin Territory in 1848 by seven Yale University professors who modeled Beloit after their Ivy League school. Today, Beloit College is still referred to as the "Yale of the West." Beloit College offers a broad undergraduate program in the liberal arts tradition to its students from all over the nation and the world.

On April 25, 1987, Beloit College welcomed Wisconsin Phi back to its campus.

The reinstatement exercises began on Friday, April 24 with an open house that was well-attended by national fraternity officials and alumni. Enthusiasm filled the room as the soon-to-be brothers greeted and entertained their alumni who came from as far as Oregon and Virginia to attend the festivities. Members of the classes of 1931 all the way to 1986 were in attendance. Equally enthusiastic were special guests, including Eminent Supreme Archon Clarke Houston, Eminent Supreme Deputy Archon Ben Allen, Eminent Supreme Recorder Ken Tracey, Extension Director Brad Cohen, and staff members Steve Brister and Jeff Arnold. They,

along with Province Rho Eminent Deputy Archon Michael Pung, shared in the excitement and anticipation that all were feeling in the living room of the ΣAE house.

After the open house, an introductory meeting was held for colony members to reflect upon the colony past and the meaning of fraternity. ESA Houston opened the meeting by complimenting the group on its three years of hard work and welcomed them back into the realm of Sigma Alpha Epsilon. After Brad Cohen led the gift opening ceremonies, a copy of the ritual book was passed around the room for each neophyte to

share his thoughts and feelings about the fraternity. All responses varied, but one message rang through all members' responses — fraternity meant everlasting friendships. The meeting was emotionally moving and meaningful for all. It was concluded with "Friends" in which neophytes put arms around one another to sing, demonstrating the closeness and openness of the group. Everyone left with great anticipation of Saturday's initiation ceremony.

SATURDAY BEGAN WITH AN ALUMNI luncheon sponsored by the colony. Colony members mixed with alumni and exchanged stories and laughter for over an hour. After the meal, Advisory Board President Harry Blomgren, Wisconsin Phi '60, addressed the group. He congratulated the colony on its hard work to attain the ultimate goal of regaining the chapter charter. He concluded by thanking the colony for bringing Wisconsin Phi back to Beloit College and for re-establishing its proud heritage.

After the luncheon, the group assembled at the First Congregational Church of Beloit for the event the colony had so long awaited. The church chapel served as an ideal setting to initiate 31 new



Houston & Gabriel hold original charter





The new brothers of Wisconsin Phi

brothers into the noble order of Sigma Alpha Epsilon. The initiation team was comprised primarily of national officials, with ESA Clarke Houston presiding over what would be his final chapter installation. Ken Tracey performed the Eminent Preceptor duties while Michael Pung served as Eminent Warden, Brad Cohen as Eminent Chronicler and Mike Sophir, Education & Leadership Consultant, performed the Eminent Recorder role. The remainder of the team was composed of ESDA Ben Allen and brothers from Wisconsin Alpha at the University of Wisconsin. When Clarke Houston finished administering the oath, Sigma Alpha Epsilon welcomed 31 new proud brothers into its realm.

The installation banquet was held at the Holiday Inn of Greater Beloit that evening. Excitement and joy permeated the air of the banquet room as the brothers awaited the charter presentation. After the meal, the ΣAE flag and statue of Minerva were presented by Province Rho Deputy Archon Michael Pung to Wisconsin Phi Eminent Archon Joe Gabriel. The pin cushion, anointing vessel, as well as the rest of the ritual equipment were presented to Wis-

consin Phi by Ken Tracey as he commended the group for its dedication and hard work. The EA badge was pinned on Joe Gabriel by Brad Cohen and he called on each member to receive his shingle presented by Ken Tracey.

Finally the moment had arrived. ESA Clarke Houston officially recognized Wisconsin Phi at Beloit College as a chapter of Sigma Alpha Epsilon. Proud alumni applauded the reinstatement of their beloved fraternity. Much to the surprise of everyone, Clarke Houston presented the original charter of Wisconsin Phi, signed February 13, 1915 by then-ESA Don Almy and ESR William Levere.

The room erupted in magnificent applause as Brother Gabriel accepted the charter on behalf of Wisconsin Phi. In his acceptance address, Gabriel reminded us all that this is "not the end, but merely the beginning." He pledged to the ΣAE national officers, Wisconsin Phi alumni and to Beloit College to continue to "support positive growth in young men through social maturity and scholastic growth." In short, to continue the excellence that once marked Wisconsin Phi.

ALL THE BROTHERS CELEBRATED Saturday evening and reflected upon the weekend as it drew to its conclusion. Many if not all were struck at how fast it had gone, but affirmed that the weekend would remain special to them for the rest of their lives.

Past EA Craig Thomas summed up the weekend best when he said, "The pride and sense of brotherhood I have experienced is tremendous. It gives me an enormous sense of fulfillment as I reflect upon the energy and time we expended to overcome seemingly insurmountable obstacles. Recalling these days I am left with wonderful memories forever etched in my mind, but more importantly, forever in my heart."

Out of the ashes of the previous Wisconsin Phi chapter, the phoenix arose from flames and forged a new chapter of Sigma Alpha Epsilon dedicated to the same convictions of its predecessor — pride, friendship, scholarship and excellence.

David Wakeley, a founder of the Wisconsin Phi Colony, is past Eminent Correspondent of the colony.

Fleece wear by Softe or equal. 50/50 poly-cotton blend for comfort, durability and easy care. Special purple and gold two-color letters are tackle twill material and securely applied into the garments with fine embroidery stitching. Four inch letters on sweat shirts and two inch letters on sweat pants. Made in U.S.A.

Adult sizes: S, M, L, XL

Sweat shirt, crew-neck, long sleeve, 4" letters

SAE11N Navy Blue, each. \$21.00

SAE11W White, each. \$21.00

Sweat shirt with hood, long sleeve, 4" letters

SAE12N Navy Blue, each. \$25.00

SAE12W White, each. \$25.00

Sweat pants, elastic waist with draw cord, elastic ankles, 2" letters

SAE13N Navy Blue, each. \$21.50

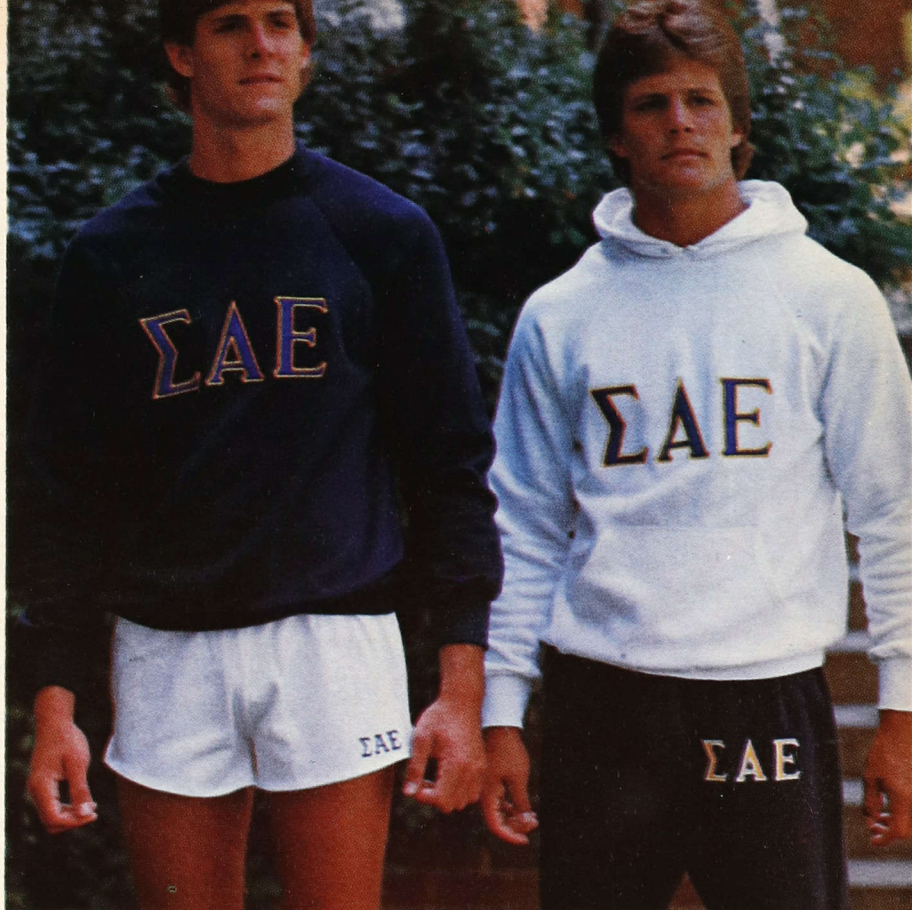
SAE13W White, each. \$21.50

Athletic shorts are by Softe, or equal, high quality. A blend of 65% cotton for comfort and 35% nylon for durability and easy care. The fraternity letters are one inch high in solid embroidery. Made in U.S.A.

Adult sizes: S, M, L, XL

SAE15W White, with purple letters, each \$11.50

SAE15N Navy, with golden letters, each \$11.50



OFFICIAL

SIGMA ALPHA EPSILON SPORTSWEAR AND GIFTS

by

IHLING BROS. EVERARD CO.



SWEATERS

These sweaters are from the well known Woolrich line. They are 100% wool and knitted with a crew neck in British Hong Kong. The coat-of-arms is embroidered into the left breast in full color. MEN'S SWEATERS are in Navy or Grey (illustrated).

Men's sizes: S, M, L, XL, 2XL

SAE71 each. \$33.00

CHAMOIS FLANNEL SHIRTS

Top of the Woolrich line, a men's sport shirt of all-cotton extra-heavy, extra soft "chamois cloth" flannel. This shirt is of a high quality like the famous mail-order chamois shirts used to be. The coat-of-arms in full color is embroidered into the body of the shirt above the left pocket. Machine washable. Available in Ecu (illustrated), Hunter's Red, or Navy. Made in U.S.A.

Men's sizes: M, L, XL

(2XL, 3XL, 4XL on special order)

SAE72 each. \$31.00





EMBROIDERY

This illustration shows the 2" coat-of-arms embroidered directly into the body of the shirts and sweaters in this catalog. Not a patch, but embroidered right into the garment for richest appearance. In full color it has well over one thousand stitches of careful detail. Readily washable rayon floss. (They should not be bleached.)

POLO SHIRT, or GOLF SHIRT in classic pique knit, with ribbed fashion collar and ribbed cuff sleeve, 2-button placket, by Hanes or equal. All cotton. Colorful coat-of-arms embroidered into breast. We will ship white unless you specify light blue or yellow. Made in U.S.A.

Adult sizes: S, M, L, XL

SAE21 each..... \$21.50

RUNNING SHORTS, by Softe. Ultra-light nylon tricot with inner brief, hidden pocket, elastic waist and vent leg. Colorful coat-of-arms embroidered into left leg. Navy blue. Made in U.S.A.

Adult sizes: M, L, XL

SAE22 each..... \$12.50

Shirts in oxford-cloth button-down style by Enro, Yorke, Aetna, or similar high quality, in both white and blue. The EASY CARE BLEND of 70% cotton/30% polyester launders beautifully with minimum effort and stays fresh all day. The 100% cotton is offered for the traditionalist. Made in U.S.A.

Men's sizes:

Neck	15	15½	16	16½	17
Sleeve	32,33	32,33,34	33,34,35	33,34,35	34,35

SHORT-SLEEVE SPORT AND DRESS SHIRT with coat-of-arms embroidered over pocket, EASY CARE BLEND.

SAE41W White, each..... \$24.00

SAE41B Blue, each..... \$24.00

COAT-OF-ARMS embroidered over pocket, long sleeve, EASY CARE BLEND.

SAE42W White, each..... \$29.50

SAE42B Blue, each..... \$29.50

COAT-OF-ARMS embroidered over pocket, long sleeve, 100% COTTON.

SAE43W White, each..... \$29.50

SAE43B Blue, each..... \$29.50

LETTERED ON COLLAR, either dark blue on light blue shirt, or grey on white. Long sleeve, EASY CARE BLEND.

SAE44W White, each..... \$29.50

SAE44B Blue, each..... \$29.50

LETTERED ON COLLAR, either dark blue on light blue shirt, or grey on white, long sleeve, 100% COTTON.

SAE45W White, each..... \$29.50

SAE45B Blue, each..... \$29.50

LETTERED ON CUFF, either dark blue on light blue shirt, or grey on white, Long sleeve, EASY CARE BLEND.

SAE46W White, each..... \$29.50

SAE46B Blue, each..... \$29.50

LETTERED ON CUFF, either dark blue on light blue shirt, or grey on white. Long sleeve, 100% COTTON.

SAE47W White, each..... \$29.50

SAE47B Blue, each..... \$29.50

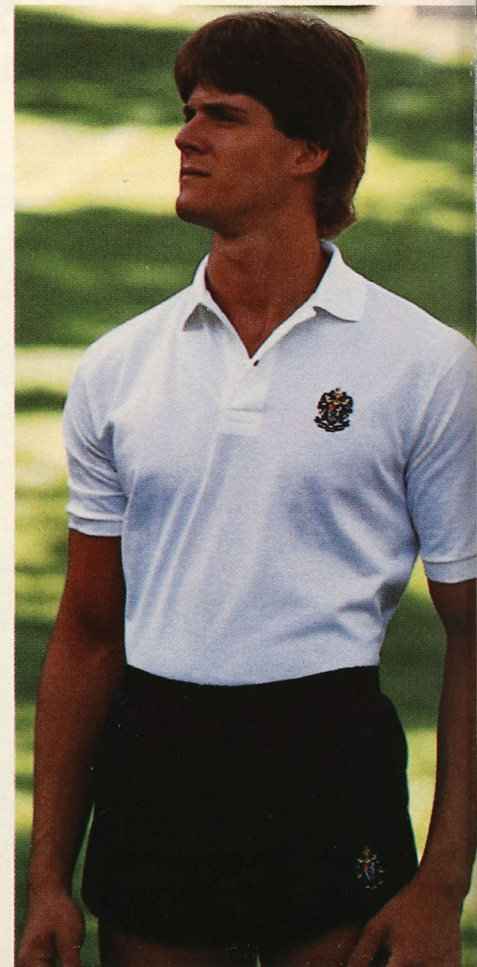
OFFICIAL TIES

A fine quality navy blue tie with miniature coat-of-arms woven throughout.

SAE48 60% Silk..... \$26.00

Popular new SAE design of repeated lion and narrow stripes.

SAE49 100% Silk..... \$28.50

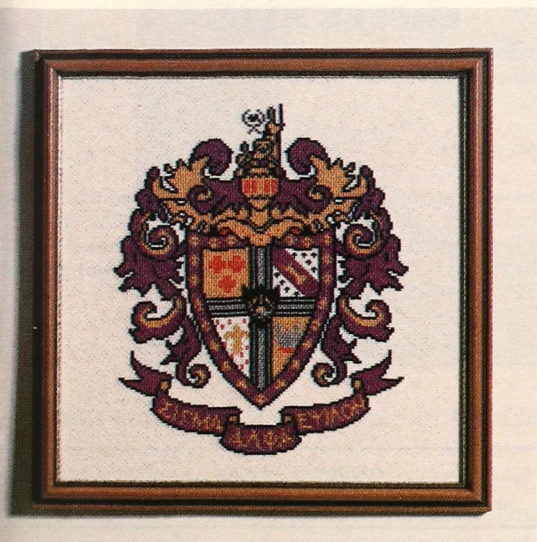


Cool weather jacket of Rugged Nylon Oxford, with polyester lining, heavy duty nap front with drawcord bottom. Golden rayon Fraternity letters in solid embroidery, two inches high. Made in U.S.A.

Sizes: S, M, L, XL
SAE8IN Navy Blue (illustrated), each..... \$28.00

Turtleneck pullover, with the small coat-of-arms embroidered into the collar. Made by Woolrich of white all-cotton interlock knit with Spandex reinforced collar and cuffs. Made in U.S.A.

Men's sizes: S, M, L, XL
SAE82, each..... \$20.50



COUNTED CROSS-STITCH KIT

Do-it-yourself kit includes 15"x17" white #14 Aida cloth, M.C. floss, needle, and graph to complete, plus alphabet to personalize. Coat-of-arms is 8½"x10". (Frame is not included.)

SAE410 Cross-Stitch Kit, each..... \$18.00

TOLL FREE PHONE OUTSIDE OF MICHIGAN

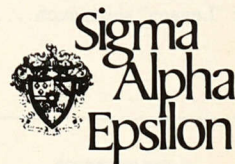
1-800-828-3662/For Orders Only
8:00 to 5:00 Weekdays/E.S.T.
1-616-381-1340/For Inquiries

GUARANTEE

Every item is sold with the understanding that it is exactly as represented, that it is of quality equal to or exceeding our expectations. Your satisfaction is guaranteed. Any item may be returned against a full money back guarantee within fifteen days of date of purchase. Any item showing defects of workmanship may be returned for replacement or refund within thirty days.

TERMS

We will ship to individuals with the order charged to Visa or MasterCard, or with your check accompanying the order. On each order, please, add a \$3.00 shipping and handling charge. Prices are quoted in U.S. Funds.



Dear Brother:

We are, here, presenting to you this year's official Sigma Alpha Epsilon clothing and gift line. These are items you will be proud to wear and use.

The lines of merchandise offered are well known and top quality. The embroidery and the sewing of the Greek letters will be done by the skilled craftsmen in Kalamazoo.

This is a joint venture with Ihling Bros. Everard Co. of Kalamazoo, Michigan. This firm has been in business since 1869. The company has been managed by fraternity men for over sixty-five years. That's two generations, with the third learning the business. We have worked with them for eight decades and know the quality of their work and their integrity to be above reproach.

This year working with the Ihlings, we are trying to anticipate the demand and be ready for prompt shipment. You can have confidence in the guarantee described here. But, do remember these are very specialized items, strong demands cause delay. It will be wise to anticipate extra delivery time, and do allow two weeks for transportation.

Fraternally,

Ken Tracey
Eminent Supreme Recorder



Photographer: Dave Rodeilus, Model: Matthew Tracey

You can leave your legacy with ΣΑΕ.

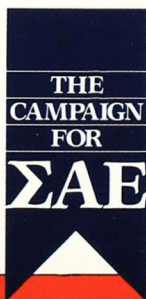
You can make a difference in the fraternity's future.

The outstanding programs provided by the Sigma Alpha Epsilon Foundation today are made possible because brothers in the past gave their support generously — in many different ways — to protect the fraternity's future. Thousands of brothers have benefited from the financial support, leadership training and encouragement provided by these programs.

By leaving even a small legacy to the Sigma Alpha Epsilon Foundation, you leave long-lasting support for countless brothers in years to come.

The goal of The Campaign for ΣΑΕ is to perpetuate our rich heritage along "The Path to Leadership." By meeting The Campaign challenge, you can touch a brother's life.

Join us on The Path to Leadership. For more information on The Campaign for ΣΑΕ, contact the ΣΑΕ Foundation office, P.O. Box 1856, Evanston, Illinois 60204; or call (312) 475-1856.



THE CAMPAIGN FOR ΣΑΕ seeks \$7.5 million over a three-year period to reinforce existing strengths by endowing leadership development and educational and financial aid programs for undergraduates. The fundamental commitments of The Campaign are to preserve and perpetuate the fraternity's rich heritage of leadership, scholarship and fellowship.



SIGMA ALPHA EPSILON FRATERNITY HOUSE
UNIVERSITY OF MISSISSIPPI

THE APPROXIMATELY 11,000 SQUARE FOOT STRUCTURE WILL BE THE LARGEST FACILITY OF ANY GREEK ORGANIZATION AFFILIATED ON THE OLE MISS CAMPUS. ALTHOUGH FUND RAISING EFFORTS HAVE NOT CONCLUDED, THE MISSISSIPPI GAMMA ALUMNI ASSOCIATION HAS RAISED MORE THAN 50 PERCENT OF THE TOTAL AMOUNT NEEDED TO CONSTRUCT THE \$800,000 HOUSE, WITH FINANCIAL ARRANGEMENTS ALREADY CONFIRMED BY A LOCAL BANK FOR THE BALANCE OF THE CONSTRUCTION COSTS. CONSTRUCTION WILL BEGIN DURING SEPTEMBER, 1987 AND THE CHAPTER WILL BE ABLE TO MOVE INTO THE HOUSE DURING SUMMER SCHOOL, 1988. THE CHAPTER HOUSE WILL PROVIDE ROOMS FOR 36 BROTHERS AND A HOUSE MOTHER'S QUARTERS. CHAPTER ROOM, FORMAL LIVING ROOM, A LARGE DINING ROOM, AND OUTDOOR PATIOS WILL HIGHLIGHT THE FIRST FLOOR INCLUDING OFFICERS QUARTERS DOWNSTAIRS.